



AIA[®] Document G709™ – 2018

Proposal Request

PROJECT: *(name and address)*
AWSOM
Bentonville, Arkansas

CONTRACT INFORMATION:
Contract For: General Construction
Date: 11.29.2021

Architect’s Project Number: 993A
Proposal Request Number: 099
Proposal Request Date: 11.20.2024

OWNER: *(name and address)*
AWSOM Lands, LLC
PO Box 2030
Bentonville, AR 72712

ARCHITECT: *(name and address)*
Polk Stanley Wilcox
509 W. Spring St., Ste 150
Fayetteville, AR 72701

CONTRACTOR: *(name and address)*
Crossland Construction Company
1800 S. 52nd Street, Suite 410
Rogers, AR 72758

The Owner requests an itemized proposal for changes to the Contract Sum and Contract Time for proposed modifications to the Contract Documents described herein. The Contractor shall submit this proposal within five (5) days or notify the Architect in writing of the anticipated date of submission.

(Insert a detailed description of the proposed modifications to the Contract Documents and, if applicable, attach or reference specific exhibits.)

Refer to the attached Proposal Request 099 Narrative listing revised drawings with brief description of changes.

THIS IS NOT A CHANGE ORDER, A CONSTRUCTION CHANGE DIRECTIVE, OR A DIRECTION TO PROCEED WITH THE WORK DESCRIBED IN THE PROPOSED MODIFICATIONS.

REQUESTED BY THE ARCHITECT:

Mark Herrmann, AIA

PRINTED NAME AND TITLE

PROPOSAL REQUEST 099

ISSUED: November 20, 2024

PROJECT: AWSOM
BENTONVILLE, AR

FROM ARCHITECT: POLK STANLEY WILCOX ARCHITECTS
801 SOUTH SPRING ST.
LITTLE ROCK AR 72201

TO CONTRACTOR: CROSSLAND CONSTRUCTION COMPANY, INC

PROPOSAL REQUEST 099 BRIEF

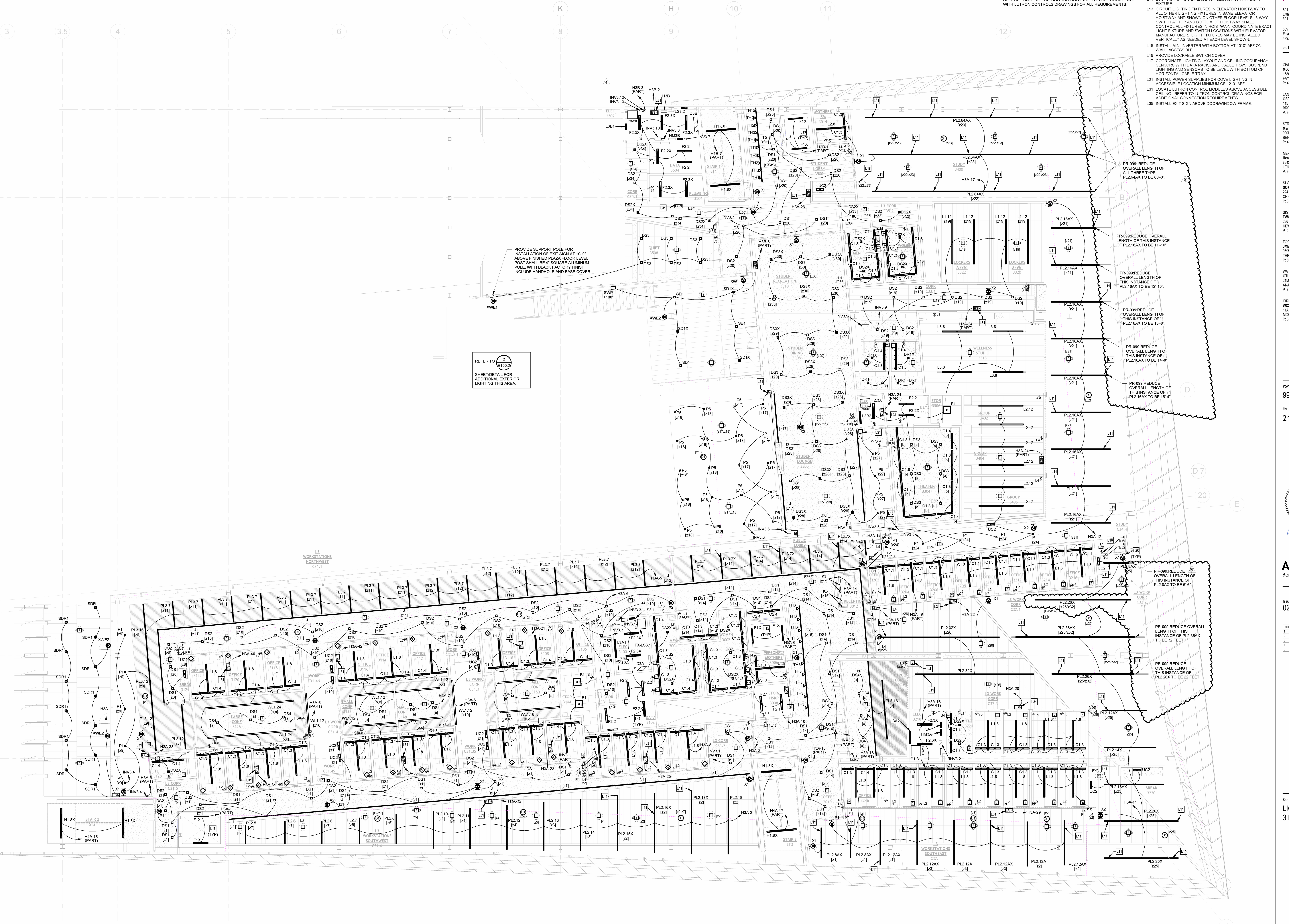
Revised drawings in PR 099 update per lighting lengths at L3 east façade shade location coordination. All fixtures shall be a minimum of 6-inches from inside edge of roller shade.

REVISED DRAWING SHEETS

1) ELECTRICAL

- a) Refer to Revised Sheet **E103A**, Detail 1, with original issue date 02.24.2023 and revised date 11.06.2024.
- 3400 – Study – Fixture Type PL2.64AX – Reduce total length of fixture by 4 feet (applies to all three instances). Retain quantity and approximate layout of EM battery sections. Adjust west suspension location to ensure fixture end maintains 6-inches clear from inside edge of roller shade.
 - C34.4 – Study:
 - (1) One type PL2.16AX – Reduce overall length to be 15'-4"
 - (2) One type PL2.16AX – Reduce overall length to be 14'-8"
 - (3) One type PL2.16AX – Reduce overall length to be 13'-8"
 - (4) One type PL2.16AX – Reduce overall length to be 12'-10"
 - (5) One type PL2.16AX – Reduce overall length to be 11'-10"
 - C32.1 – L3 Work Corridor:
 - (1) One type PL2.26X – No change to fixture type: move fixture further west to clear roller shades.
 - (2) One type PL2.26X – Reduce overall length by 4ft to be total length of 22 feet
 - (3) One type PL2.36AX – Reduce overall length by 4ft to be a total length of 32 feet. Move fixture approximately 1 foot east to improve alignment with soffit.
 - (4) One type PL2.8AX – Reduce overall length by 18-inches and move fixture approximately 1 foot west to improve alignment with soffit.
 - (5) One type PL2.12AX – Adjust location further west to clear roller shades.

End of PR 099



- GENERAL NOTES:**
- REFER TO GENERAL NOTES ON SHEET E000.
 - PROVIDE ALL LOW VOLTAGE CABLING AND NECESSARY RACEWAY TO SUPPORT CABLING FOR LIGHTING CONTROL SYSTEM. COORDINATE WITH LUTRON CONTROLS DRAWINGS FOR ALL REQUIREMENTS.
- ELECTRICAL PLAN NOTES:**
- INSTALL POWER SUPPLY SERVING COVE LIGHTING ABOVE ADJACENT ACCESSIBLE CEILING. LOCATE SUPPLY NO MORE THAN 2' ABOVE CEILING TILE.
 - LOCATE ON 4" EMERGENCY SECTION WITH LIGHT FIXTURE.
 - CIRCUIT LIGHTING FIXTURES IN ELEVATOR HOISTWAY TO ALL OTHER LIGHTING FIXTURES IN SAME ELEVATOR HOISTWAY AND SHOWN ON OTHER FLOOR LEVELS. 3-WAY SWITCH AT TOP AND BOTTOM OF HOISTWAY SHALL CONTROL ALL FIXTURES IN HOISTWAY. COORDINATE EXACT LIGHT FIXTURE AND SWITCH LOCATIONS WITH ELEVATOR MANUFACTURER. LIGHT FIXTURES MAY BE INSTALLED VERTICALLY AS NEEDED AT EACH LEVEL SHOWN.
 - INSTALL MINI INVERTER WITH BOTTOM AT 10'-0" AFF ON WALL, ACCESSIBLE.
 - PROVIDE LOCKABLE SWITCH COVER.
 - COORDINATE LIGHTING LAYOUT AND CEILING OCCUPANCY SENSORS WITH DATA RACKS AND CABLE TRAY. SUSPEND LIGHTING AND SENSORS TO BE LEVEL WITH BOTTOM OF HORIZONTAL CABLE TRAY.
 - INSTALL POWER SUPPLIES FOR COVE LIGHTING IN ACCESSIBLE LOCATION MINIMUM OF 12'-0" AFF.
 - LOCATE LUTRON CONTROL MODULES ABOVE ACCESSIBLE CEILING. REFER TO LUTRON CONTROLS DRAWINGS FOR ADDITIONAL CONNECTION REQUIREMENTS.
 - INSTALL EXIT SIGN ABOVE DOOR/WINDOW FRAME.

POLK STANLEY WILCOX
 801 South Spring Street
 Little Rock, AR 72201
 501.378.0878 ofico
 509 W. Spring St. | Suite 150
 Fayetteville, AR 72701
 479.444.0343 ofico
 polkstanleywilcox.com

McClaff Consulting Engineers, Inc.
 1386 E STEPHENS ST
 FAYETTEVILLE, AR 72703
 P. 479.443.2372

LANDSCAPE
 OSD
 115 ST. JOHNS PLACE
 BROOKLYN, NY 11217
 P. 917.553.5886

STRUCTURAL
 MacMartin Consulting Engineers
 806 SOUTH WALT BLVD., STE 217
 BENTONVILLE, AR 72712
 P. 479.493.0946

MEFP - LOW VOLTAGE
 Henderson Engineers
 830 LENOVA DRIVE, STE 300
 LENOVA, MS 39214
 P. 913.650.9187

SUSTAINABILITY
 SOM
 224 SOUTH MICHIGAN AVENUE
 CHICAGO, IL 60604
 P. 312.360.4121

SIGNAGE - WAYFINDING
 TWO TWELVE
 238 W. 23RD ST., SUITE 802
 NEW YORK, NY 10001
 P. 212.254.9870

FOOD SERVICE
 JMC HOSPITALITY
 2665 SIX PINES DR., SUITE 8210
 THE WOODLANDS, TX 77380
 P. 684.441.2222

WATER FEATURES
 OTL
 2150 S. TOWNE CENTER, SUITE 100
 ANAHEIM, CA 92809
 P. 714.637.4147

IRRIGATION
 W3 DESIGN
 11A ROBINSON MAHER BLVD
 MCCLESYDE, PA 16135
 P. 844.231.7042

PROVIDE SUPPORT POLE FOR INSTALLATION OF EXIT SIGN AT 10'-0" ABOVE FINISHED PLAZA FLOOR LEVEL. POST SHALL BE 4" SQUARE ALUMINUM POLE, WITH BLACK FACTORY FINISH. INCLUDE HANDLE AND BASE COVER.

REFER TO SHEET/DETAIL FOR ADDITIONAL EXTERIOR LIGHTING THIS AREA.

1 LIGHTING - LEVEL 3 RCP - AREA A
 1/8" = 1'-0"

KEY PLAN

PSW Job Number:
993A

Henderson Job Number:
2150002607

AWSON
 Bentonville, AR

Issue Date:
02.24.2023

NUMBER	DATE	DESCRIPTION
1	03/22/23	Asstn 1
2	06/02/23	Asstn 2
3	07/26/23	Prop 2
4	08/24/23	Prop 3
5	11/29/23	Prop 4

Professional Engineer Seal:
 ARKANSAS
 LICENSED PROFESSIONAL ENGINEER
 No. 1-0598
 J. HALL
 11/20/2024