



AIA[®] Document G709[™] – 2018

Proposal Request

PROJECT: *(name and address)*
AWSOM
Bentonville, Arkansas

CONTRACT INFORMATION:
Contract For: General Construction
Date: 11.29.2021

Architect’s Project Number: 993A
Proposal Request Number: 086
Proposal Request Date: 10.03.2024

OWNER: *(name and address)*
AWSOM Lands, LLC
PO Box 2030
Bentonville, AR 72712

ARCHITECT: *(name and address)*
Polk Stanley Wilcox
509 W. Spring St., Ste 150
Fayetteville, AR 72701

CONTRACTOR: *(name and address)*
Crossland Construction Company
1800 S. 52nd Street, Suite 410
Rogers, AR 72758

The Owner requests an itemized proposal for changes to the Contract Sum and Contract Time for proposed modifications to the Contract Documents described herein. The Contractor shall submit this proposal within five (5) days or notify the Architect in writing of the anticipated date of submission.

(Insert a detailed description of the proposed modifications to the Contract Documents and, if applicable, attach or reference specific exhibits.)

Refer to the attached Proposal Request 086 Narrative listing revised drawings with brief description of changes.

THIS IS NOT A CHANGE ORDER, A CONSTRUCTION CHANGE DIRECTIVE, OR A DIRECTION TO PROCEED WITH THE WORK DESCRIBED IN THE PROPOSED MODIFICATIONS.

REQUESTED BY THE ARCHITECT:

Mark Herrmann, AIA

PRINTED NAME AND TITLE

PROPOSAL REQUEST 086

Front Walk Material Revision

ISSUED: 10.03.2024

PROJECT: AWSOM
BENTONVILLE, AR

FROM ARCHITECT: POLK STANLEY WILCOX ARCHITECTS
801 SOUTH SPRING ST.
LITTLE ROCK AR 72201

TO CONTRACTOR: CROSSLAND CONSTRUCTION COMPANY, INC

PROPOSAL REQUEST 073 BRIEF

This PR updates the material in the front fire land access for cost reduction.

REVISED DRAWING SHEETS

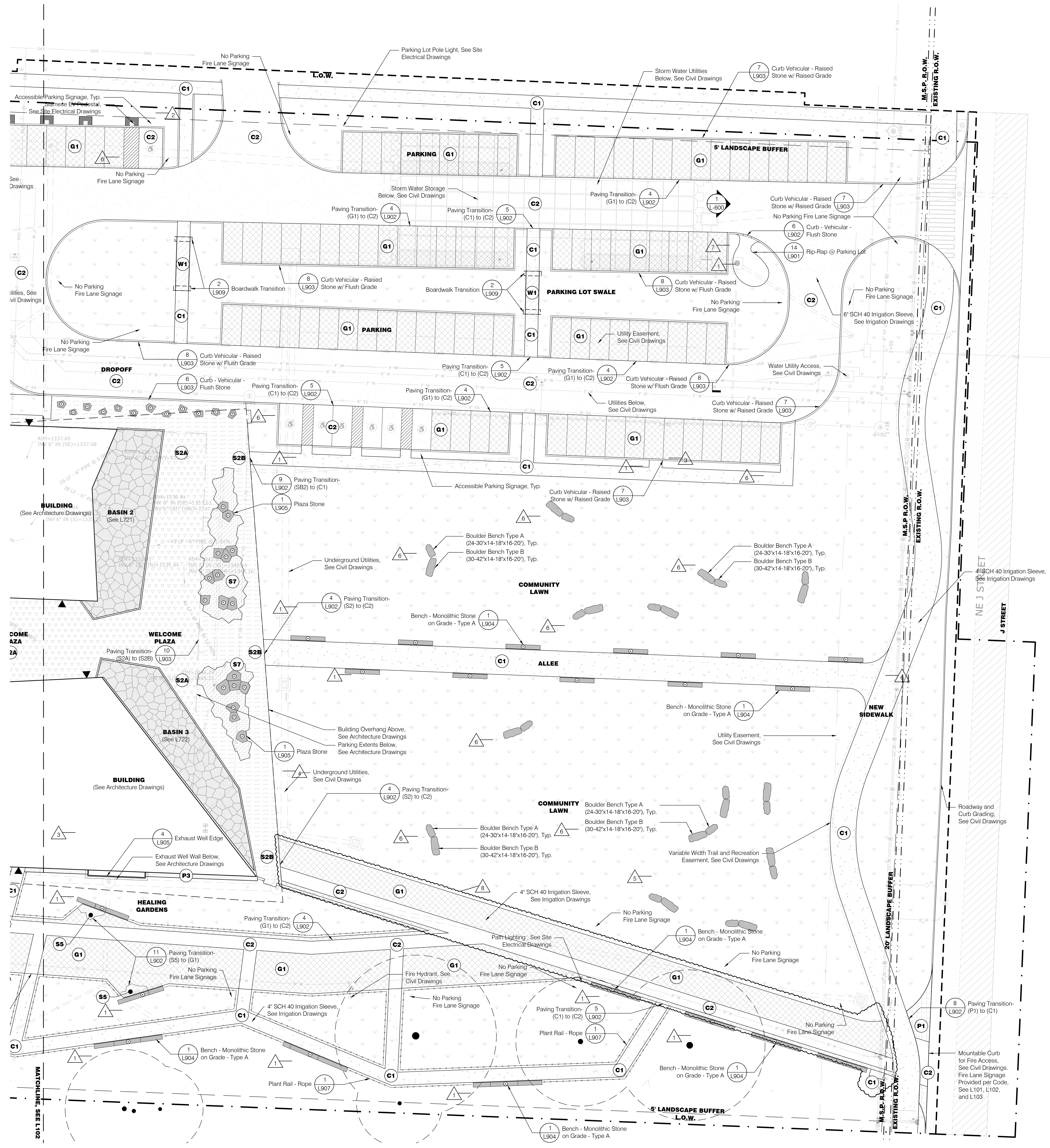
A. Landscape Architecture

1. Refer to Revised Sheet **L103**, with original issue date 03.13.2023 and revised date **10.03.2024**.
 - Updated materials in the front fire lane access walk to a combination of C2 and G1.
2. Refer to Revised Sheet **L104**, with original issue date 03.13.2023 and revised date **10.03.2024**.
 - Updated layout dimensions of the front fire land access walk.

End of PR 086



REVISIONS		
NUMBER	DATE	DESCRIPTION
1	03.13.2023	ADDED
2	06.09.2023	ADDED
3	04.04.2024	PRG 009
4	04.18.2024	ASR 008
5	05.20.2024	ASR 018
6	07.24.2024	PRG 009
7	08.19.2024	ASR 007
8	10.03.2024	PRG 006



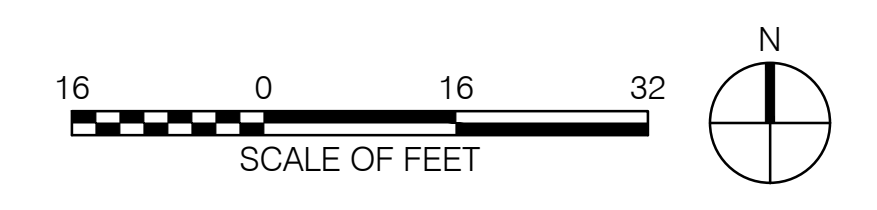
General Legend

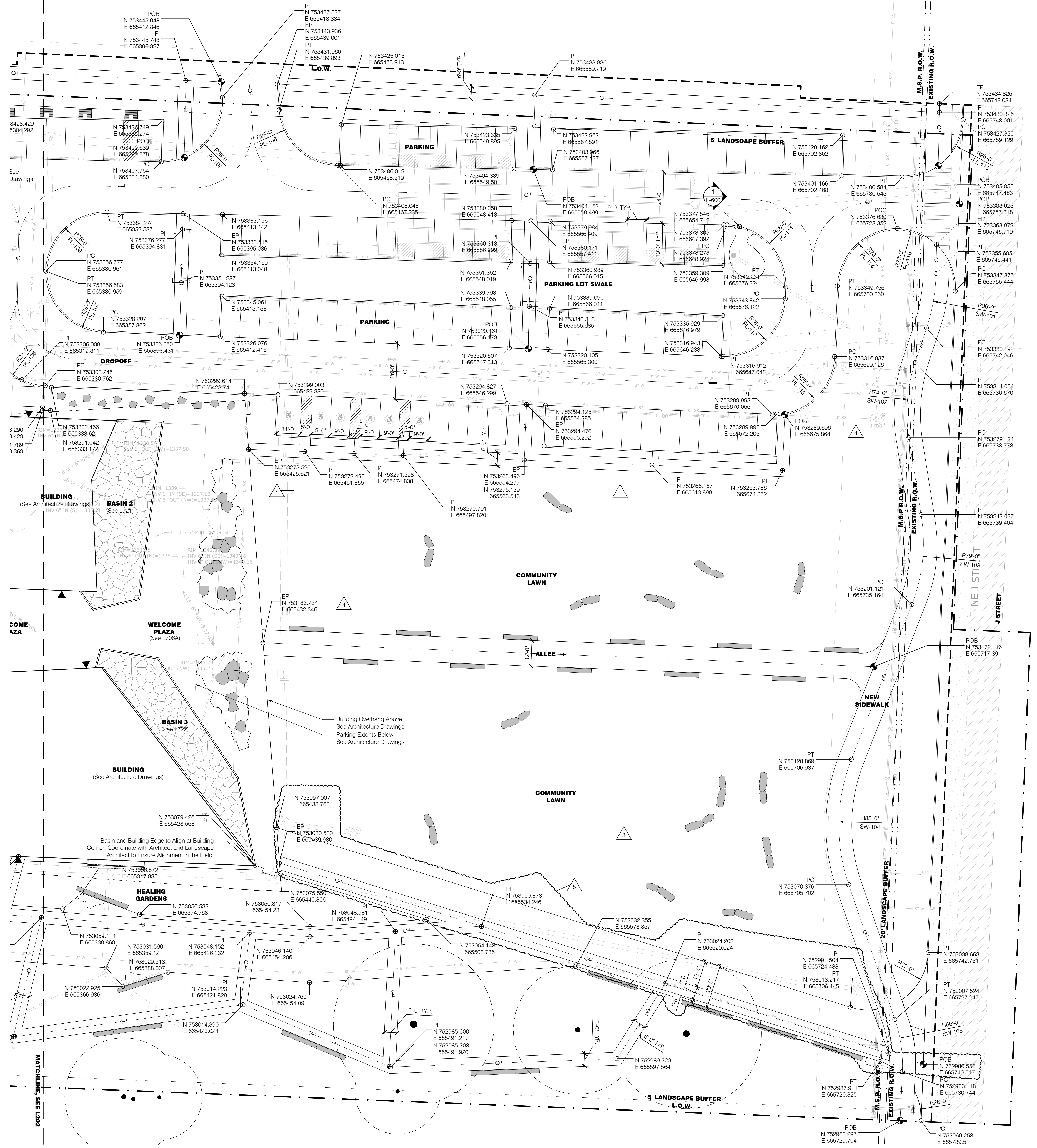
- Existing Tree to Remain
- Property Line
- Limit of Work
- Right of Way
- Building Entry
- Light Poles, See Site Electrical Drawings
- Wall Mounted Lights, See Site Electrical Drawings
- Bollard Lights, See Site Electrical Drawings
- Tree Uplights, See Site Electrical Drawings
- Charging Pedestal, See Site Electrical Drawings
- Wireless Access Pole, See Site Electrical Drawings
- GFCI Receptacle, See Site Electrical Drawings
- Storm Water Catch Basin, See Civil Drawings
- Sanitary Manhole, See Civil Drawings
- Water Utility Access, See Civil Drawings
- Fire Hydrant, See Civil Drawings
- Gas Utility Access, See Civil Drawings
- Pond Overflow Access, See Civil Drawings
- Landscape Area Drain Inlet, See Civil Drawings
- Landscape Underdrain, See Civil Drawings
- Roof Drain, See Architecture Drawings

Materials Legend

- 1 L901 Grass Pave - Vehicular (P1)
- 12 L901 Maintenance Path - Gravel Strip (P3)
- 3 L901 Gravel - Vehicular (G1)
- 4 L901 Gravel - Pedestrian Stabilized (G2)
- 5 L901 Gravel - Pedestrian (G3)
- 6 L901 Concrete Paving - Pedestrian - Exposed Aggregate (C1)
- 7 L901 Concrete Paving - Vehicular - Exposed Aggregate (C2)
- 1 L910 Wood - Boardwalk (W1)
- 11 L901 Stone Paving - On Uninsulated Structure (S2A)
- 13 L901 Stone Paving - Plaza - On Grade (S2B)
- 9 L901 Stone Paving - Winter Terrace - On Grade (S5)
- 13 L901 Stone Paving - Plaza - On Grade (S7)
- 1 L916 Decomposed Granite (G4)
- Planted Area
- Water
- 1 L904 Bench - Monolithic Stone on Grade, Type A
- 1 L904 Bench - Monolithic Stone on Grade, Type B
- 6 L904 Bench - Log
- 7 L904 Bench - Timber
- 8 L904 Stump - Small Trunk
- 10 L904 Bike Rack
- 11 L904 Receptacle Bin
- Accessible Parking or Fire Lane Sign, Dimensions and Placement Per Code
- 1 L904 Plaza Stone
- 1 L907 Plant Rail - Rope
- 3 L907 Fencing - Teaching Garden Deer Fence
- 4' SCH 40 Irrigation Sleeve, See Irrigation Drawings
- 6' SCH 40 Irrigation Sleeve, See Irrigation Drawings
- Siamese EV Pedestal, See Site Electrical Drawings
- Boulder Bench Type A (24-30'x14-18'x16-20'), Typ.
- Boulder Bench Type B (30-42'x14-18'x16-20'), Typ.

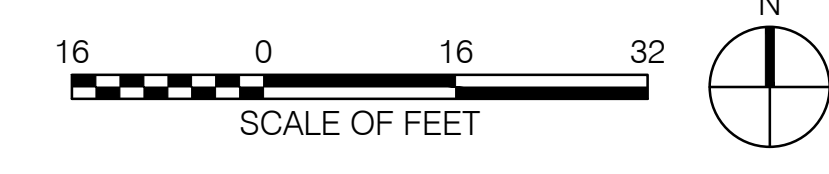
1 Materials Plan - Ground Floor 3
Scale: 1/16" = 1'-0"





- General Legend**
- Existing Tree to Remain
 - Property Line
 - Limit of Work
 - Right of Way
 - Building Entry
 - Light Poles, See Site Electrical Drawings
 - Wall Mounted Lights, See Site Electrical Drawings
 - Bollard Lights, See Site Electrical Drawings
 - Tree Uplights, See Site Electrical Drawings
 - Charging Pedestal, See Site Electrical Drawings
 - Wireless Access Pole, See Site Electrical Drawings
 - GFCI Receptacle, See Site Electrical Drawings
 - Storm Water Catch Basin, See Civil Drawings
 - Sanitary Manhole, See Civil Drawings
 - Water Utility Access, See Civil Drawings
 - Fire Hydrant, See Civil Drawings
 - Gas Utility Access, See Civil Drawings
 - Pond Overflow Access, See Civil Drawings
 - Landscape Area Drain Inlet, See Civil Drawings
 - Landscape Underdrain, See Civil Drawings
 - Roof Drain, See Architecture Drawings
- Layout Legend**
- Centerline
 - Point of Beginning
 - End Point
 - End of Curve
 - Point of Intersection
 - Point of Curvature
 - Point of Compound Curvature
 - Point of Reverse Curvature
 - Point of Tangency
 - Accessible Signage
 - Fire Lane Signage
 - Coordinate Point
 - Align Element
 - Set Element Parallel

1 Layout - Hardscape - Ground Floor 3
Scale: 1/16" = 1'-0"



POLK STANLEY WILCOX
801 South Spring Street
Little Rock, AR 72201
501.378.0878 office
509 W. Spring St. | Suite 150
Fayetteville, AR 72701
479.644.0033 office
polkstanleywilcox.com

CIVIL
McClendon Consulting Engineers, Inc.
1580 E STEARNS ST
FAYETTEVILLE, AR 72703
P: 479.443.2377

LANDSCAPE
OSD
11511 JONES PLACE
BROOKLYN, NY 11217
P: 917.553.5586

STRUCTURAL
Martin/Martin Consulting Engineers
8005 SOUTH WALTON BLVD., STE 212
BENTONVILLE, AR 72712
P: 479.407.0545

MERF - LOW VOLTAGE
Henderson Engineers
6346 LENEXA DRIVE, STE 300
LENEXA, KS 66044
P: 913.660.6167

SUSTAINABILITY
SOM
224 SOUTH MICHIGAN AVENUE
CHICAGO, IL 60604
P: 312.360.4121

SIGNAGE - WAYFINDING
TWO TWELVE
220 W. 27th ST., SUITE 802
NEW YORK, NY 10001
P: 212.254.6870

FOOD SERVICE
JIM HOSPITALITY
6906 SW FINCH DR., SUITE B210
THE WOODLANDS, TX 77380
P: 609.841.2222

WATER FEATURES
OTL
2105 S. TOWNE CENTER, SUITE 100
ANAHIM, CA 92906
P: 714.637.4747

IRRIGATION
W3 DESIGN
11A ROBINSON MANOR BLVD.
MOORESCOPE, PA 14108
P: 844.231.7042

PSW Job Number:
933A

AWSOM
Bentonville, AR

Issue Date:
03.13.2023

REVISIONS		
NUMBER	DATE	DESCRIPTION
1	03.13.2023	ADD/REMOVE
2	06.09.2023	ADDITIONAL
3	06.30.2024	AS-BUILT
4	07.24.2024	PR.009
5	10.22.2024	PR.008

Contents:
Layout - Hardscape - Ground Floor 3/3

THIS PAGE IS BEST VIEWED IN COLOR
L203
BENTONVILLE PROJECT NUMBER LSD22-0068