



# AIA<sup>®</sup> Document G709<sup>™</sup> – 2018

## Proposal Request

**PROJECT:** *(name and address)*  
AWSOM  
Bentonville, Arkansas

**CONTRACT INFORMATION:**  
Contract For: General Construction  
Date: 11.09.2021

Architect’s Project Number: 993A  
Proposal Request Number: 053  
Proposal Request Date: 05.13.2024

**OWNER:** *(name and address)*  
AWSOM Lands, LLC  
PO Box 2030  
Bentonville, AR 72712

**ARCHITECT:** *(name and address)*  
Polk Stanley Wilcox  
509 W. Spring St., Ste 150  
Fayetteville, AR 72701

**CONTRACTOR:** *(name and address)*  
Crossland Construction Company  
1800 S. 52nd Street, Suite 410  
Rogers, AR 72758

The Owner requests an itemized proposal for changes to the Contract Sum and Contract Time for proposed modifications to the Contract Documents described herein. The Contractor shall submit this proposal within five (5) days or notify the Architect in writing of the anticipated date of submission.

*(Insert a detailed description of the proposed modifications to the Contract Documents and, if applicable, attach or reference specific exhibits.)*

Refer to the attached Proposal Request 053 Narrative listing revised drawings with brief description of changes.

**THIS IS NOT A CHANGE ORDER, A CONSTRUCTION CHANGE DIRECTIVE, OR A DIRECTION TO PROCEED WITH THE WORK DESCRIBED IN THE PROPOSED MODIFICATIONS.**

### REQUESTED BY THE ARCHITECT:

Mark Herrmann, AIA  
\_\_\_\_\_  
PRINTED NAME AND TITLE

# PROPOSAL REQUEST 053

## Rooftop Loudspeakers

**ISSUED:** May 13, 2024

**PROJECT:** AWSOM  
BENTONVILLE, AR

**FROM ARCHITECT:** POLK STANLEY WILCOX ARCHITECTS  
801 SOUTH SPRING ST.  
LITTLE ROCK AR 72201

**TO CONTRACTOR:** CROSSLAND CONSTRUCTION COMPANY, INC

---

### PROPOSAL REQUEST 53 BRIEF

This PR captures revisions to scope related to the rooftop loudspeakers.

### REVISED DRAWING SHEETS

#### 1) Fire Protection:

- a) Refer to Revised Sheet **FP104A**, with original issue date 02.24.2023 and revised date 05.10.2024.
  - Detail 1:
    - (1) Revised fire protection plans to show manufacturer specific loudspeaker amplifier.
    - (2) Revised plan notes pertaining to amplifier panel model, settings, and installation.
- b) Refer to Revised Sheet **FP105A**, with original issue date 02.24.2023 and revised date 05.10.2024.
  - Detail 1:
    - (1) Revised fire alarm loudspeaker layout on the roof.
    - (2) Revised plan notes pertaining to loudspeaker model, settings, and installation.
- c) Refer to Revised Sheet **FP501**, with original issue date 02.24.2023 and revised date 05.10.2024.
  - Details 5, 6, 7, and 8:
    - (1) Revised fire alarm loudspeaker details based on manufacturer change to show specific requirements for mounting, installation, and required accessories.

**End of PR 053**

**FIRE ALARM SCOPE OF WORK NOTES:**

1. FIRE ALARM SCOPE OF WORK IS TO PROVIDE A COMPLETE, IN-BUILDING MASS NOTIFICATION FIRE ALARM SYSTEM.
2. ALL CEILING MOUNTED FIRE ALARM APPLIANCES AND DEVICES SHALL BE INSTALLED IN A SYMMETRICAL PATTERN AND ALIGNED WITH LIGHTS AND OTHER CEILING EQUIPMENT WHERE CODE PERMITS.
3. WHERE CEILING MOUNTED FIRE ALARM EQUIPMENT ARE SHOWN IN WOOD CEILINGS, CONTRACTOR SHALL COORDINATE FINAL LOCATIONS AND APPLIANCE COLOR WITH ARCHITECT.
4. WHERE CEILING MOUNTED SPEAKERS ARE SHOWN IN AREAS OPEN TO STRUCTURE, SPEAKERS SHALL BE LOCATED 18" ABOVE THE NEAREST CEILING ELEVATION.

**FIRE SPRINKLER SCOPE OF WORK NOTES:**

1. FIRE SPRINKLER SCOPE OF WORK IS TO PROVIDE A COMPLETE, AUTOMATIC SPRINKLER SYSTEM THROUGHOUT THE BUILDING.
2. SPRINKLER PROTECTION WITH FREEZE PROTECTION SHALL BE PROVIDED FOR ALL EXTERIOR BUILDING PROJECTIONS AND EXTERIOR OCCUPIED BALCONIES OR DECKS.
3. SPRINKLER SYSTEM CONTAINS A COMBINATION OF WET, DRY, AND PREACTION SPRINKLER SYSTEMS; ANTIFREEZE SOLUTION PROVIDED IN SELECT WET SYSTEMS.
4. ALL DRY-PIPE AND PREACTION SPRINKLER SYSTEMS SHALL BE FILLED WITH NITROGEN.
5. HEAT TRACE IS TO BE PROVIDED ON ANY WET DISTRIBUTION MAINS ROUTED THROUGH UNHEATED SPACES.

**FIRE SPRINKLER SCOPE OF WORK NOTES:**

6. FIRE SPRINKLER SYSTEM DESIGN AND INSTALLATION SHALL BE IN ACCORDANCE WITH NFPA 13 2019 EDITION WITH THE EXCEPTION OF THE GARAGE SPRINKLER SYSTEM DESIGN CRITERIA, REFER TO FP100.2 FOR ADDITIONAL INFORMATION.
7. WERE ANTIFREEZE SYSTEMS ARE PROVIDED, SYSTEM SHALL BE CALCULATED AS A DRY-PIPE SPRINKLER SYSTEM WHERE NEEDED TO ACHIEVE LARGER SYSTEM SIZES PER MANUFACTURER'S DATA.
8. FIRE SPRINKLER PIPE SHALL NOT BE ROUTED THROUGH ELECTRICAL ROOMS, IT DATA ROOMS, ANY ROOMS OR SIMILAR, PIPING SHALL BE LIMITED TO BRANCHLINES SERVING SPRINKLERS WITHIN THOSE ROOMS.

**FIRE PROTECTION PLAN NOTES:**

- F2 PROVIDE REMOTE POWER SUPPLY TO POWER VISIBLE NOTIFICATION APPLIANCES.
- F3 PROVIDE REMOTE AMPLIFIER FOR AUDIBLE NOTIFICATION APPLIANCES.
- F5 PROVIDE EQUIPMENT AND CONNECTION(S) TO MONITOR HEAT TRACE PANEL FOR SUPERVISORY OR TROUBLE SIGNALS.
- F6 PROVIDE ENCOMPASS LT 300W AMPLIFIER PANEL TO POWER ROOF MOUNTED T20A10 LOUVER/SPEAKERS. PROVIDE END-OF-LINE MODULE FOR SPEAKER MONITORING. COORDINATE WITH ELECTRICAL AND POWER FROM SPARE 20A, 120V CIRCUIT IN PANEL L4A.
- F9 PROVIDE EQUIPMENT AND CONNECTIONS TO THE FIRE ALARM SYSTEM AS REQUIRED TO ACTIVATE AND MONITOR ELEVATOR RECALL AND/OR SHUTDOWN. REFER TO SEQUENCE OF OPERATION FOR ADDITIONAL INFORMATION.
- F11 PROVIDE EQUIPMENT AND CONNECTION(S) REQUIRED FOR ELEVATOR RECALL AND/OR SHUTDOWN. REFER TO SEQUENCE OF OPERATION FOR ADDITIONAL INFORMATION.
- F15 PROVIDE HEAT DETECTORS WITHIN 2 FEET OF ALL SPRINKLERS IN AREA DESIGNATED. REFER TO SEQUENCE OF OPERATION FOR ADDITIONAL INFORMATION.

**FIRE PROTECTION PLAN NOTES:**

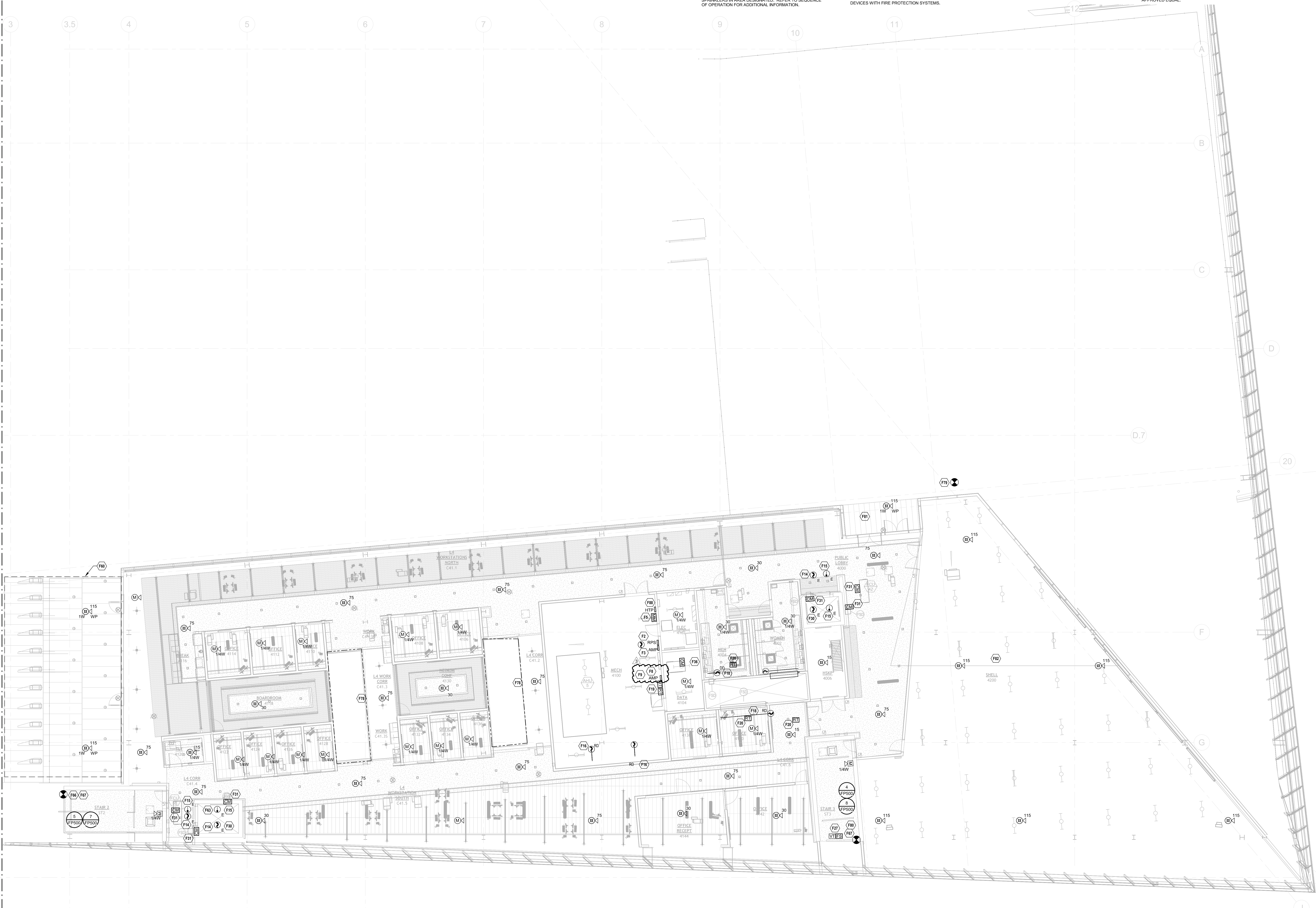
- F16 PROVIDE DUCT MOUNTED SMOKE DETECTOR FOR FAN POWERED MECHANICAL AIR HANDLING EQUIPMENT SHUTDOWN. INSTALL DETECTOR PER MANUFACTURER'S RECOMMENDATIONS. REFER TO MECHANICAL SHEETS FOR EQUIPMENT AND DUCTWORK LAYOUT AND DETAILS.
- F18 PROVIDE DUCT MOUNTED SMOKE DETECTOR (OR AREA DETECTOR IF APPLICABLE) FOR FIRE-SMOKE DAMPER ACTIVATION. DETECTOR SHALL BE INSTALLED WITHIN 5 FEET OF DAMPER PER NFPA 72. REFER TO MECHANICAL SHEETS FOR EXACT LOCATION OF DAMPERS. THE DETECTOR SELECTED SHALL BE SUITABLE FOR THE AIRFLOW PRESENT IN THE DUCT.
- F19 PROVIDE LOW VOLTAGE WIRING FROM DUCT DETECTOR TO REMOTE TEST STATION. MOUNT REMOTE TEST STATION ON WALL AT 48" AFF.
- F20 PROVIDE LOW VOLTAGE WIRING FROM DUCT DETECTOR TO REMOTE TEST STATION. MOUNT REMOTE TEST STATION IN CEILING.
- F27 CONNECT FIRE SPRINKLER MONITORING DEVICES TO FIRE ALARM SYSTEM. COORDINATE QUANTITY AND LOCATION OF DEVICES WITH FIRE PROTECTION SYSTEMS.

**FIRE PROTECTION PLAN NOTES:**

- F30 SMOKE DETECTOR AT THE TOP OF THE HOISTWAY SHALL INITIATE FIRE/SMOKE DAMPER ACTIVATION AND ASSOCIATED MECHANICAL EQUIPMENT SHUTDOWN.
- F31 PROVIDE EQUIPMENT AND CONNECTION(S) REQUIRED TO ACTIVATE FIRE-SMOKE DAMPERS AND INITIATE MECHANICAL EQUIPMENT SHUTDOWN.
- F36 PROVIDE EQUIPMENT AND CONNECTION(S) TO OVERRIDE ACCESS CONTROLS AND ELECTRONIC LOCKS, UNLOCK STAIR DOORS AND LOCKED DOORS IN EGRESS PATHS. COORDINATE WITH SECURITY CONTRACTOR FOR ADDITIONAL REQUIREMENTS AND FINAL SECURITY PANEL LOCATIONS.
- F60 PROTECT AREA BELOW PROJECTION WITH HEAT TRACED WET-PIPE SYSTEM.
- F63 PROVIDE SPRINKLER PROTECTION AT THE TOP OF THE ELEVATOR HOISTWAY.
- F66 2-1/2" STANDPIPE HOSE VALVE, CAP AND CHAIN.
- F67 PROVIDE STANDPIPE OUTLETS AT THE MAIN STAIR LANDING LEVELS.

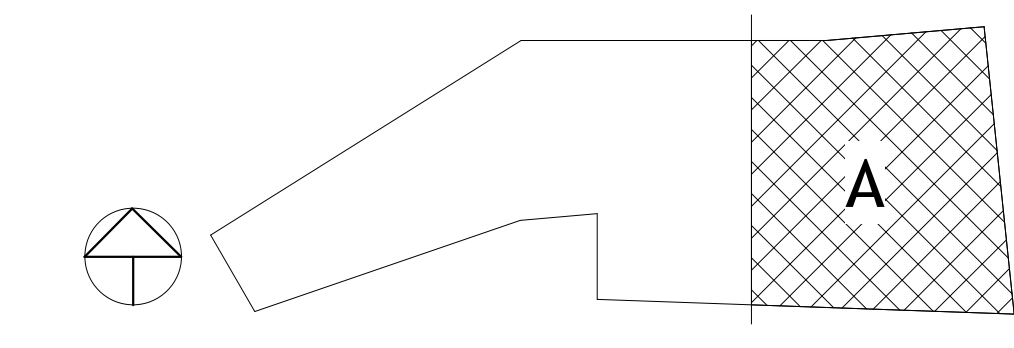
**FIRE PROTECTION PLAN NOTES:**

- F77 PROTECT AREA WITH SPRINKLERS ABOVE AND BELOW CLOUD CEILING IN ACCORDANCE WITH NFPA 13.
- F78 INSTALL SIDEWALL SPRINKLERS IN SKYLIGHT IN ACCORDANCE WITH NFPA 13.
- F79 INSTALL ROOF TOP HOSE CONNECTION ROUTED BACK TO NEAREST STANDPIPE.
- F80 MINIMUM 6" COMBINATION STANDPIPE SPRINKLER RISER WITH 2-1/2" HOSE VALVE, CAP AND CHAIN. PROVIDE COMBINATION INSPECTORS' TEST AND DRAIN ASSEMBLY WITH SPRINKLER CONTROL VALVE, TAMPER SWITCH, FLOW SWITCH AND CHECK VALVE. ROUTE DRAIN RISER PARALLEL TO STANDPIPE RISER.
- F81 PROVIDE DRY VIG-FLEX SPRINKLER FOR PROTECTION AT EXTERIOR CANOPY.
- F82 SPRINKLER PROTECTION CRITERIA IN THE SHELL SPACE AREA TO BE A MINIMUM OF ORDINARY HAZARD GROUP II (0.20 GPM/FT<sup>2</sup> OVER 1,500 FT<sup>2</sup>).
- F88 PROVIDE CHROMOLOX HEAT TRACE PANEL. PROVIDE CHROMOLOX M5C BACNET CONVERTER MODULE OR APPROVED EQUAL.



○ FIRE PROTECTION - LEVEL 4 RCP - AREA A  
1/8" = 1'-0"  
SCALE: 1/8"=1'-0"

**KEY PLAN**



PSW Job Number:  
**993A**  
Henderson Job Number:  
**2150002607**



**AWSOM**  
Bentonville, AR

Issue Date:  
**02.24.2023**

REVISIONS		
NUMBER	DATE	DESCRIPTION
1	03.15.23	Addendum 1
2	06.29.23	Addendum 2
3	05.13.24	Rev.03

Contents:  
**FIRE PROTECTION - LEVEL 4 RCP - AREA A**



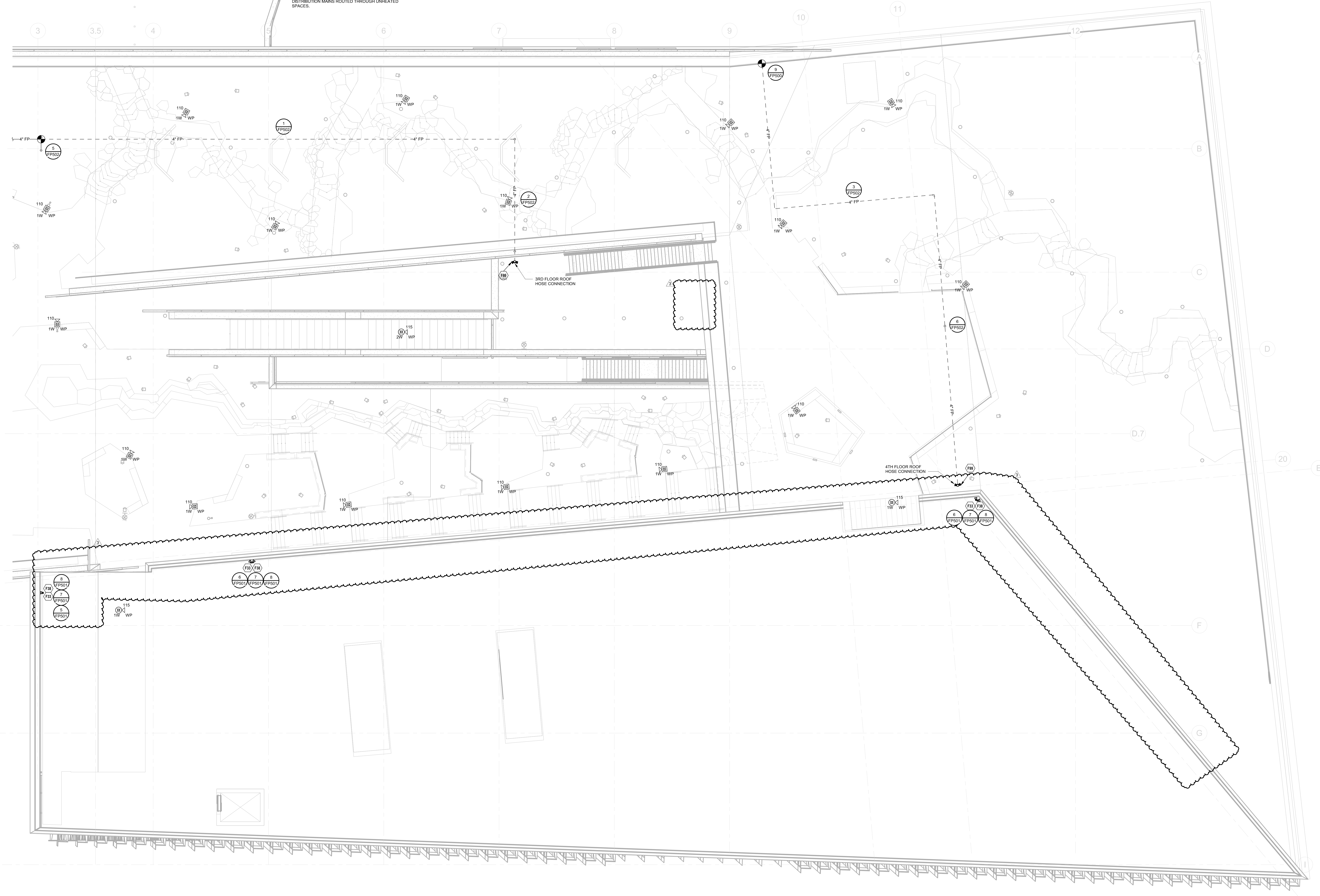
REVISIONS		
NUMBER	DATE	DESCRIPTION
1	03.10.23	Addendum 1
2	12.18.23	PR-024
3	06.14.24	PR-023

**FIRE PROTECTION PLAN NOTES:**  
F33 PROVIDE HYPERSPRINK TQPA-10 MODEL 902154-201-1014 FIRE ALARM LOUDSPEAKER. PROVIDE 70V 12W OUTPUT.  
F34 LOUDSPEAKERS SHALL BE POLE MOUNTED BEHIND THE PARAPET. SPEAKERS SHALL BE INSTALLED SUCH THAT THE ENTIRE SPEAKER IS ABOVE THE PARAPET AND CAN BE ANGLED TOWARD THE OPPOSITE SIDE OF THE OCCUPIED CEILING ROOF BELOW.  
F35 FREE STANDING ROOF LEVEL STANDPIPE WITH TWO 2 1/2" HOSE VALVES, CAP AND CHAIN. PROVIDE SHUT-OFF VALVE WITH TAMPER SWITCH AND BALL DRIP WITHIN STAIRWAY.

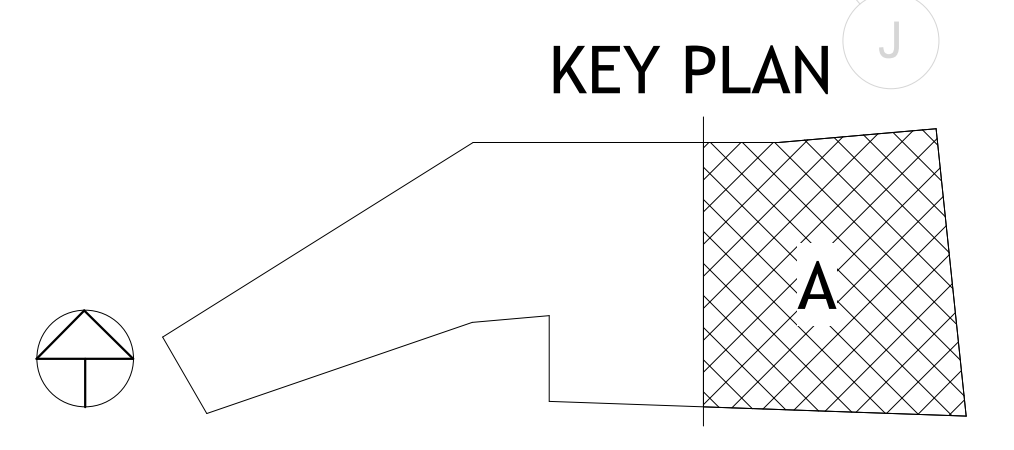
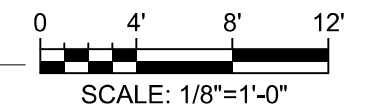
**FIRE ALARM SCOPE OF WORK NOTES:**  
1. FIRE ALARM SCOPE OF WORK IS TO PROVIDE A COMPLETE, IN-BUILDING MASS NOTIFICATION FIRE ALARM SYSTEM.  
2. ALL CEILING MOUNTED FIRE ALARM APPLIANCES AND DEVICES SHALL BE INSTALLED IN A SYMMETRICAL PATTERN AND ALIGNED WITH LIGHTS AND OTHER CEILING EQUIPMENT WHERE CODE PERMITS.  
3. WHERE CEILING MOUNTED FIRE ALARM EQUIPMENT ARE SHOWN IN WOOD CEILINGS, CONTRACTOR SHALL COORDINATE FINAL LOCATIONS AND APPLIANCE COLOR WITH ARCHITECT.  
4. WHERE CEILING MOUNTED SPEAKERS ARE SHOWN IN AREAS OPEN TO STRUCTURE, SPEAKERS SHALL BE LOCATED 18" ABOVE THE NEAREST CEILING ELEVATION.

**FIRE SPRINKLER SCOPE OF WORK NOTES:**  
1. FIRE SPRINKLER SCOPE OF WORK IS TO PROVIDE A COMPLETE, AUTOMATIC SPRINKLER SYSTEM THROUGHOUT THE BUILDING.  
2. SPRINKLER PROTECTION WITH FREEZE PROTECTION SHALL BE PROVIDED FOR ALL EXTERIOR BUILDING PROJECTIONS AND EXTERIOR OCCUPIED BALCONIES OR DECKS.  
3. SPRINKLER SYSTEM CONTAINS A COMBINATION OF WET, DRY, AND PREACTION SPRINKLER SYSTEMS. ANTI-FREEZE SOLUTION PROVIDED IN SELECT WET SYSTEMS.  
4. ALL DRY-PIPE AND PREACTION SPRINKLER SYSTEMS SHALL BE FILLED WITH NITROGEN.  
5. HEAT TRACE IS TO BE PROVIDED ON ANY WET DISTRIBUTION MAINS ROUTED THROUGH UNHEATED SPACES.

**FIRE SPRINKLER SCOPE OF WORK NOTES:**  
6. FIRE SPRINKLER SYSTEM DESIGN AND INSTALLATION SHALL BE IN ACCORDANCE WITH NFPA 13 2019 EDITION WITH THE EXCEPTION OF THE GARAGE SPRINKLER SYSTEM DESIGN CRITERIA. REFER TO FP100.2 FOR ADDITIONAL INFORMATION.  
7. WHERE ANTI-FREEZE SYSTEMS ARE PROVIDED, SYSTEM SHALL BE CALCULATED AS A DRY-PIPE SPRINKLER SYSTEM WHERE NEEDED TO ACHIEVE LARGER SYSTEM SIZES PER MANUFACTURER'S DATA.  
8. FIRE SPRINKLER PIPE SHALL NOT BE ROUTED THROUGH ELECTRICAL ROOMS, IT DATA ROOMS, ANY ROOMS OR SIMILAR. PIPING SHALL BE LIMITED TO BRANCHLINES SERVING SPRINKLERS WITHIN THOSE ROOMS.



1 FIRE PROTECTION PLAN - ROOF - AREA A  
1/8" = 1'-0"



PSW Job Number:  
**993A**

Henderson Job Number:  
**2150002607**



**AWSOM**  
Bentonville, AR

Issue Date:  
**02.24.2023**

REVISIONS		
NUMBER	DATE	DESCRIPTION
1	03/15/23	Addendum 1
2	06/29/23	Addendum 2
3	07/25/24	REVISED
4	06/19/24	REVISED

Contents:  
**FIRE PROTECTION DETAILS**

