



AIA[®]

Document G709™ – 2018

Proposal Request

PROJECT: *(name and address)*
AWSOM
Bentonville, Arkansas

CONTRACT INFORMATION:
Contract For: General Construction
Date: 11.09.2021

Architect's Project Number: 993A
Proposal Request Number: 043
Proposal Request Date: 04.02.2024

OWNER: *(name and address)*
AWSOM Lands, LLC
PO Box 2030
Bentonville, AR 72712

ARCHITECT: *(name and address)*
Polk Stanley Wilcox
509 W. Spring St., Ste 150
Fayetteville, AR 72701

CONTRACTOR: *(name and address)*
Crossland Construction Company
1800 S. 52nd Street, Suite 410
Rogers, AR 72758

The Owner requests an itemized proposal for changes to the Contract Sum and Contract Time for proposed modifications to the Contract Documents described herein. The Contractor shall submit this proposal within five (5) days or notify the Architect in writing of the anticipated date of submission.

(Insert a detailed description of the proposed modifications to the Contract Documents and, if applicable, attach or reference specific exhibits.)

Refer to the attached Proposal Request 043 Narrative listing revised drawings and specifications with brief description of changes.

THIS IS NOT A CHANGE ORDER, A CONSTRUCTION CHANGE DIRECTIVE, OR A DIRECTION TO PROCEED WITH THE WORK DESCRIBED IN THE PROPOSED MODIFICATIONS.

REQUESTED BY THE ARCHITECT:

Mark Herrmann, AIA

PRINTED NAME AND TITLE

PROPOSAL REQUEST 043

Updates to Doors and Frames from Submittal Notes

ISSUED: April 2, 2024

PROJECT: AWSOM
BENTONVILLE, AR

FROM ARCHITECT: POLK STANLEY WILCOX ARCHITECTS
801 SOUTH SPRING ST.
LITTLE ROCK AR 72201

TO CONTRACTOR: CROSSLAND CONSTRUCTION COMPANY, INC

PROPOSAL REQUEST 043 BRIEF

This PR updates architectural drawings with comments made in returned Door and Frame Submittals.

- Replaces concealed frames with standard hollow metal frames at back of house areas per owner direction.
- Revises hardware finish color at exterior doors
- Revises Incorrect or missing hardware sets (added sets match submittal number)
- Revises Door finish at interior doors where necessary
- Clarifies locations of 'F1M' Masonry Head frames
- Revises Team Based Learning Hall exterior Sound Lock hardware based on conversations with Armstrong for applied slat installation and door operation clearances.

REVISED DRAWING SHEETS

1) Architectural Revisions

- a) Refer to Revised Sheet **ALS 03 Life Safety Plan – Level 3** with original issue date 02.24.2023 and revision date 04.02.2024.
 - Detail 1 (Floor Plan) – Door rating tags added between office/lobby and student areas at rated divider wall.
- b) Refer to Revised Sheet **A101A Note Plan – Level 1 Area A** with original issue date 02.24.2023 and revision date 04.02.2024.
 - In WORK 1610, change location of card reader to work-room side to match door schedule comment.
- c) Refer to Revised Sheet **A103A Note Plan – Level 3 Area A** with original issue date 02.24.2023 and revision date 04.02.2024.
 - Added Aluminum elevation tag to east entry wall of Large Conf 3200
 - Doors 3308B, 3308A, and 3508B: pedestals removed from plan and card readers located on mullions. No auto openers, pedestals not required. Mullion jamb depth appears to be adequate per curtainwall shops. GC coordinate installation.
- d) Refer to Revised Sheet **A104A Note Plan – Level 4 Area A** with original issue date 02.24.2023 and revision date 04.02.2024.

- Doors 4000A: pedestal removed from plan and card readers located on mullion. No auto opener, pedestals not required. Mullion jamb depth appears to be adequate per curtainwall shops. GC coordinate installation.
- e) Refer to Revised Sheet **A673 Interior Details** with original issue date 02.24.2023 and revision date 04.02.2024.
- Added detail 9 at Team Based Learning Hall Vestibule Doors at applied slat locations.
- f) Refer to Revised Sheet **A710 Note Plan – Door Schedule and Legend** with original issue date 02.24.2023 and revision date 04.02.2024.
- **Door 0110A** – Added comment for interior, push side auto opener button location.
 - **Door 1106A** – Revise from concealed frame to standard Hollow Metal Frame.
 - **Door 1110A** – Revise from concealed frame to standard Hollow Metal Frame.
 - **Door 1112A** - Revise from concealed frame to standard Hollow Metal Frame.
 - **Door 1116A** - Revise from concealed frame to standard Hollow Metal Frame.
 - **Door 1118A** - Revise from concealed frame to standard Hollow Metal Frame.
 - **Door 1120A** - Revise from concealed frame to standard Hollow Metal Frame.
 - **Door 1309A** – Revise Hardware Set to 13.0 to match other main entrance exterior doors (All Glass Doors).
 - **Door 1309B** – Revise Hardware Set to 22.0 to match other interior vestibule doors (All Glass Doors).
 - **Door 1416A** – Revise Door Construction to ‘SCS’.
 - **Door 1608A** – Revise Door Construction to ‘PL1’.
 - **Door 2100A** – Added comment for ‘operator on pedestals’ to match floor plan.
 - **Door 2202A** - Revise from concealed frame to standard Hollow Metal Frame.
 - **Door 2204A** - Revise from concealed frame to standard Hollow Metal Frame.
 - **Door 2206A** - Revise from concealed frame to standard Hollow Metal Frame.
 - **Door 2221A** – Added row for Door 2221A at Housekeeping Closet. Door was originally tagged as C22.2A on plans, which was a duplicate.
 - **Door 2309A** - Revise from concealed frame to standard Hollow Metal Frame.
 - **Door 2400A**- Revise from concealed frame to standard Hollow Metal Frame. See new Detail for slats.
 - **Door 2400B**- Revise from concealed frame to standard Hollow Metal Frame. See new Detail for slats.
 - **Door 2400C**- Revise from concealed frame to standard Hollow Metal Frame.
 - **Door 2400D**- Revise from concealed frame to standard Hollow Metal Frame.
 - **Door 2404A**- Revise from concealed frame to standard Hollow Metal Frame.
 - **Door 2410A**- Revise from concealed frame to standard Hollow Metal Frame. See new Detail for slats.
 - **Door 2410B**- Revise from concealed frame to standard Hollow Metal Frame. See new Detail for slats.
 - **Door 2410C**- Revise from concealed frame to standard Hollow Metal Frame.
 - **Door 2410D**- Revise from concealed frame to standard Hollow Metal Frame.
 - **Door 2508A**- Revise from concealed frame to standard Hollow Metal Frame.
 - **Door 2510A**- Revise from concealed frame to standard Hollow Metal Frame.
 - **Door 3002A**- Revise from concealed frame to standard Hollow Metal Frame.
 - **Door 3004A**- Revise from concealed frame to standard Hollow Metal Frame.
 - **Door 3006A**- Revise from concealed frame to standard Hollow Metal Frame.
 - **Door 3008A**- Revise from concealed frame to standard Hollow Metal Frame.
 - **Door 3152A** – Add missing Hardware set.
 - **Door 3200C** -Revise Door Panel Height to 8’. Refer to new elevation for fixed panel above.
 - **Door 3300A** – Revise rating to 45 min. (Wall Remains 60 min). Add missing hardware set.
 - **Door 3302A**- Revise from concealed frame to standard Hollow Metal Frame.
 - **Door 4000B** – Add missing Hardware set.
 - **Door 4002A**- Revise from concealed frame to standard Hollow Metal Frame.
 - **Door 4004A**- Revise from concealed frame to standard Hollow Metal Frame.
 - **Door 4006A**- Revise from concealed frame to standard Hollow Metal Frame.
 - **Door 4142B**- Revise from concealed frame to standard Hollow Metal Frame, Change height to 8’.

- **Door 4200B** – Add missing hardware set.
 - **Door C22.2A** –Revise Frame Type, Door panel type, and Hardware number to reflect door in C22.2 Education Corridor, East.
 - **Door C23.2A** – Revise Hardware Set to 22.1. Specified Hardware did not align with ‘All Glass Door’ operation. New hardware set per submittal notes (similar to 22.0 but without electric operation).
 - **Door C25.1A** – Added missing hardware set.
 - **Door C25.2A** – Added comment for ‘operators on pedestals’ to match floor plan.
 - **Door C32.2A** – Revise rating to 45 min. (Wall remains 60 minutes). Add missing hardware set.
 - **Door C35.1** – Revise Finish Material to ‘PL2’. Add missing hardware set.
 - **Door C35.2** – Add missing hardware set.
 - **Door ST1.0** – Add missing hardware set.
 - **Door ST2.1B** – Revise Hardware Set to 9.0 to match functionality of door ST3.1B.
 - **Doors noting ‘F1M’ Frames at L1 – L4:** This frame type with a 4” masonry head was inadvertently included at single doors on upper levels, and is only required at doors in CMU walls at Level 0. The schedule has been updated to reflect this intent and matches clarifications that were made in the submittal comments. (change is not clouded; general note added below F1M frame elevation).
- g) Refer to Revised Sheet **A751 Interior Glazing System Elevations – Storefront L2, L3** with original issue date 02.24.2023 and revision date 04.02.2024.
- Added Elevation S3.02, at L3 Conference Room, East Entry (Shown on plan, but not previously elevated).

SPECIFICATIONS SECTION 080671

Set: 35.0 (REVISED)

Doors: 2400A, 2400B, 2410A, 2410B (Team Based Learning Hall Exterior Vestibule Doors)

Description: Pair - SVR/FS - Card Reader - Closer/stop

| | | | | |
|--------------------------|------------------------------|-----|----|--------|
| 8 Hinge | T4A3786 5" x 5" | 613 | | |
| 2 SVR Exit, Fail Safe | 7110 EO B S MELR A640 2-1/4" | 606 | YA | 087100 |
| 2 Offset Door Pull | RM3311-60 Mtg-Type 12XHD | US4 | RO | 087100 |
| 2 Surface Closer | 3321 | 696 | YA | 087100 |
| 2 Silencer - Metal Frame | 608 | | RO | 087100 |
| 2 ElectroLynx Harness | QC-Cxxx sized for door width | | MK | 087100 |
| 2 ElectroLynx Harness | QC-C1500P | | MK | 087100 |
| 1 Card Reader | By security provider | | OT | |
| 2 Position Switch | DPS-M-BK | | SU | 087100 |
| 1 Power Supply | AQD1 | | SU | 087100 |
| 2 Floor Stops | RM857 | BSP | | |

Set 35.0 Notes:

Coordinate voltage, operation and electrical characteristics with all related trades.

Card Reader, wiring and connections by security provider.

Closer to be mounted on interior/ vestibule side.

Overhead stop (closer) and floor stop required at this door due to size/ weight.

REVISED HARDWARE FINISHES

The following finish updates were noted in returned Submittal 397-0: Door Hardware Schedules and Product Data and primarily affect exterior doors. Each section below is grouped by similar type/installation, with the design intent explained in the notes for each grouping. Hardware Sets reflect the set designation/ headings as reviewed in the submittal.

1. PRIMARY ENTRANCES - SCHOOL, CLINIC, AND WEST GARDEN VESTIBULES

HW Set 13.0 (1100A, 1600A, 1309A, Exterior Vestibule doors at main School, Clinic, and L1 Garden entries)

HW Set 22.0 (Interior Vestibule doors at School Entrance, Clinic Entrance, and L1 Garden Vestibule)

- a. Brass US4 approved at exterior pull and Interior decorative panic/ push bars

- b. Revise remaining hardware on door to be 613/US10B (Dark Satin Bronze) or 613E/10BE (Dark Satin Bronze Equivalent/ Powder Coat) as required for Item.
- c. Note: Intent is for bar-style pulls and 'nicer' push bars to stand out, but remaining hardware to be darker and less visible.
- d. Note All-Glass doors have not been submitted or reviewed yet. Additional notes may be required at that time.

2. PRIMARY ENTRANCE - CAFÉ

HW Set 04.0 (Door 2100A, Exterior door at Café)

- a. Brass US4 approved at exterior pull
- b. Revise remaining hardware on door to be 613/US10B (Dark Satin Bronze) or 613E/10BE (Dark Satin Bronze Equivalent/ Powder Coat) as required for Item.
- c. Note: Intent is for bar-style pulls to stand out, but remaining hardware (Including Interior panic) to be darker.

3. SECONDARY/ NON-PRIMARY ALUMINUM DOORS

HW Set 01.0 (Doors 0110A, 0110B, C25.2A, Parking Level Lobby and L2 NW corridor TO exterior)

HW Set 02.0 (Door 1550A, Exterior vestibule doors at Grotto)

HW Set 05.0 (Doors 1322B, 1603A, 3308B, 3508B, Ext Doors at L1 NE Vest, Clinic Vest, Single doors at L3 Plaza)

HW Set 06.0 (Door 0103A, Parking Level Clinic Lobby)

HW Set 07.0 (Door 1528B, Exterior Door at Security Facing Grotto)

HW Set 07.1 (Doors 3124A, 3124B, 4116A, 4116B, West Balcony doors at L3/ L4 Offices)

HW Set 09.0 (Door ST3.1B, ST2.1B (Exit Doors at South Stairs)

HW Set 08.0 (Door ST1.1B, Exit door at North Stair)

HW Set 11.0 (Door 1550B, Interior Door at Grotto Vestibule)

HW Set 12.0 (Door 1322A, 1603B, Interior Door at NW Vestibule, Interior Door at Clinic North Vestibule)

HW Set 20.0 (Door 3308A, Exterior Double Door to L3 Plaza)

HW Set 21.0 (Door 1600C, Clinic entry vestibule from Clinic Corridor)

HW Set 66 (Interior Doors 3010A, 2306C, upstairs at end of corridors by Library, Offices)

- a. Revise all hardware on door to be 613/US10B (Dark Satin Bronze) or 613E/10BE (Dark Satin Bronze Equivalent/ Powder Coat) as required for Item.
- b. Note: Intent is for hardware to blend with the door finish at these aluminum doors.

4. EXTERIOR UTILITY DOORS

HW Set 15.0 (Door 0126A, Exterior Storage Door at Parking Level)

HW Set 15.0A (Door 0124C, Exterior from Mechanical at L0)

HW Set 15.0B (Door 1556A, Building Support to Bike Grotto)

HW Set 15.1 (Doors 0104A, 0105A, 0112A, Misc Support Rooms at Parking Level)

HW Set 15.2 (Door 0124A, L0 Mechanical to Parking)

HW Set 15.2A (Door 0124B, L0 Mechanical to Parking)

HW Set 15.3 (Door 122B, Exterior from L0 Fire Riser Room)

HW Set 16.0 (Doors 0102C, 0116B, Parking Into exhaust wells)

HW Set 16.0B (Door 1552A, Building Storage + Irrigation Into Bike Grotto)
HW Set 17.0 (Doors ST2.0, ST3.0, L0 stair doors directly accessible from Parking)
HW Set 18.0 (Doors 0119A, 0120A, L0 Bio Hazard and Telecom Rooms on L0 to Parking)
HW Set 18.0A (Door 0116A, L0 Sim Air to Parking)
HW Set 18.1 (Door 2208B, Exterior L2 Mechanical Door)
HW Set 18.1A (Door 0104B, L0 Utility Room Into Parking)
HW Set 18.2 (Door 0114A, L0 Mech/ Elec room to Parking)
HW Set 19.1 (Door 0102B, L0 Mech/ Elec room to Parking)
HW Set 19.1A (Door 0102A, L0 Elec room to Parking)

- a. Revise all hardware on door to be 613/US10B (Dark Satin Bronze) or 613E/10BE (Dark Satin Bronze Equivalent/ Powder Coat) as required for Item.
- b. Notes: The intent is for ALL hardware to be dark for exterior utility doors.

5. SECONDARY, NON-PRIMARY 'ALL GLASS DOORS' - EXTERIOR

HW Set 14.0 (Door 4000A, Exterior Door at L4 Lobby, swinging In)
HW Set 14.1 (Door 4000B, Exterior Door at L4 Lobby, swinging out)

- a. Revise all hardware on door to be 613/US10B (Dark Satin Bronze) or 613E/10BE (Dark Satin Bronze Equivalent/ Powder Coat) as required for Item.
- b. Note All-Glass doors have not been submitted or reviewed yet. Additional notes may be required at that time.

6. SECONDARY, NON-PRIMARY 'ALL GLASS DOORS' - INTERIOR

HW Set 22.1 (Interior Door at top of gallery stairs)

- a. Brass US4 approved at exterior pull and Interior decorative panic/ push bars
- b. Revise remaining hardware on door to be 613/US10B (Dark Satin Bronze) or 613E/10BE (Dark Satin Bronze Equivalent/ Powder Coat) as required for Item.
- c. Note All-Glass doors have not been submitted or reviewed yet. Additional notes may be required at that time.

End of PR 043

PSW Job Number:
993A

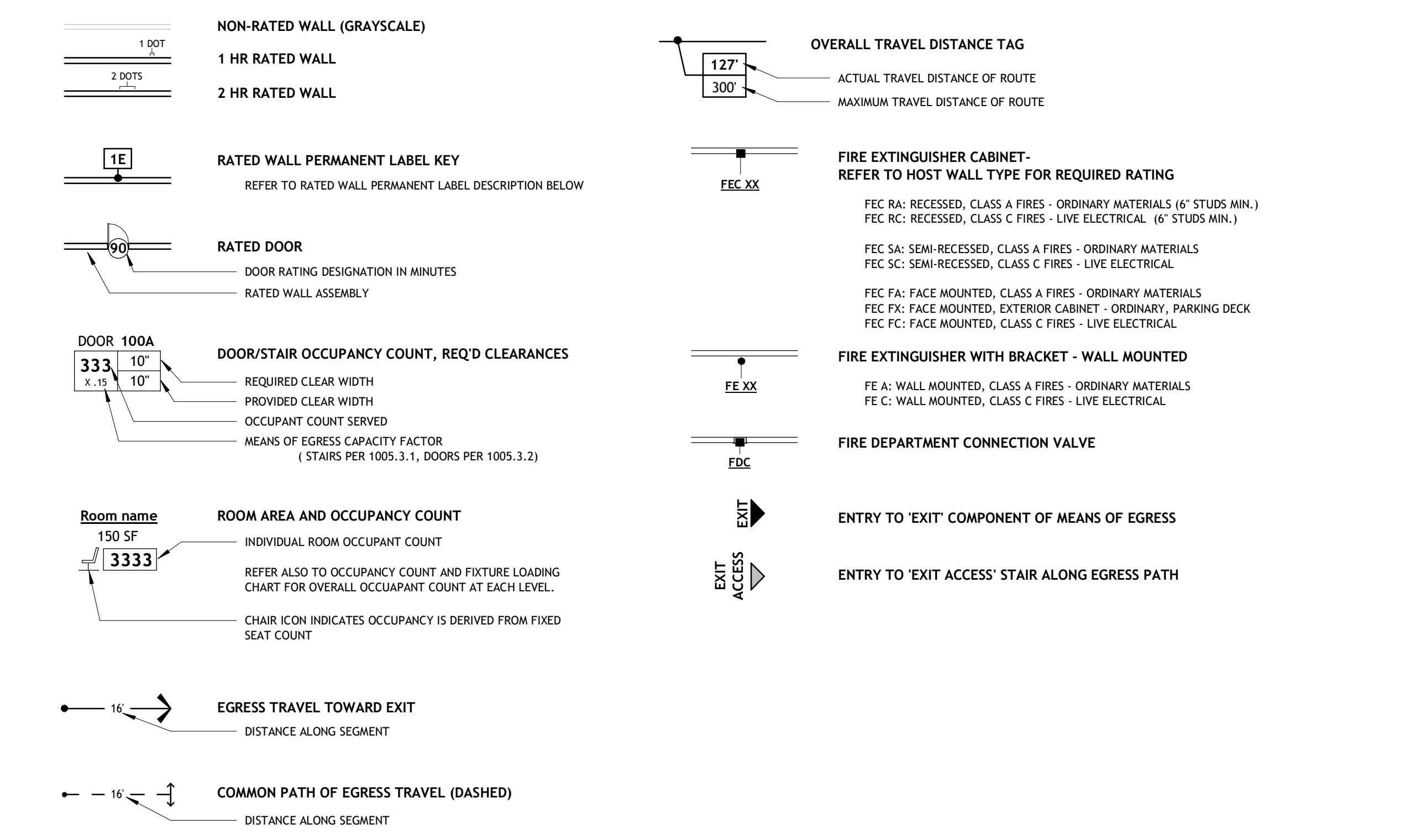


Issue Date:
02.24.2023

| REVISIONS | | |
|-----------|------------|------------|
| 1 | 05.13.2023 | ADDENDUM 1 |
| 2 | 08.09.2023 | ADDENDUM 2 |
| 3 | 04.28.2024 | PRO-03 |

Consents:
LIFE SAFETY PLAN - LEVEL 3

LIFE SAFETY LEGEND



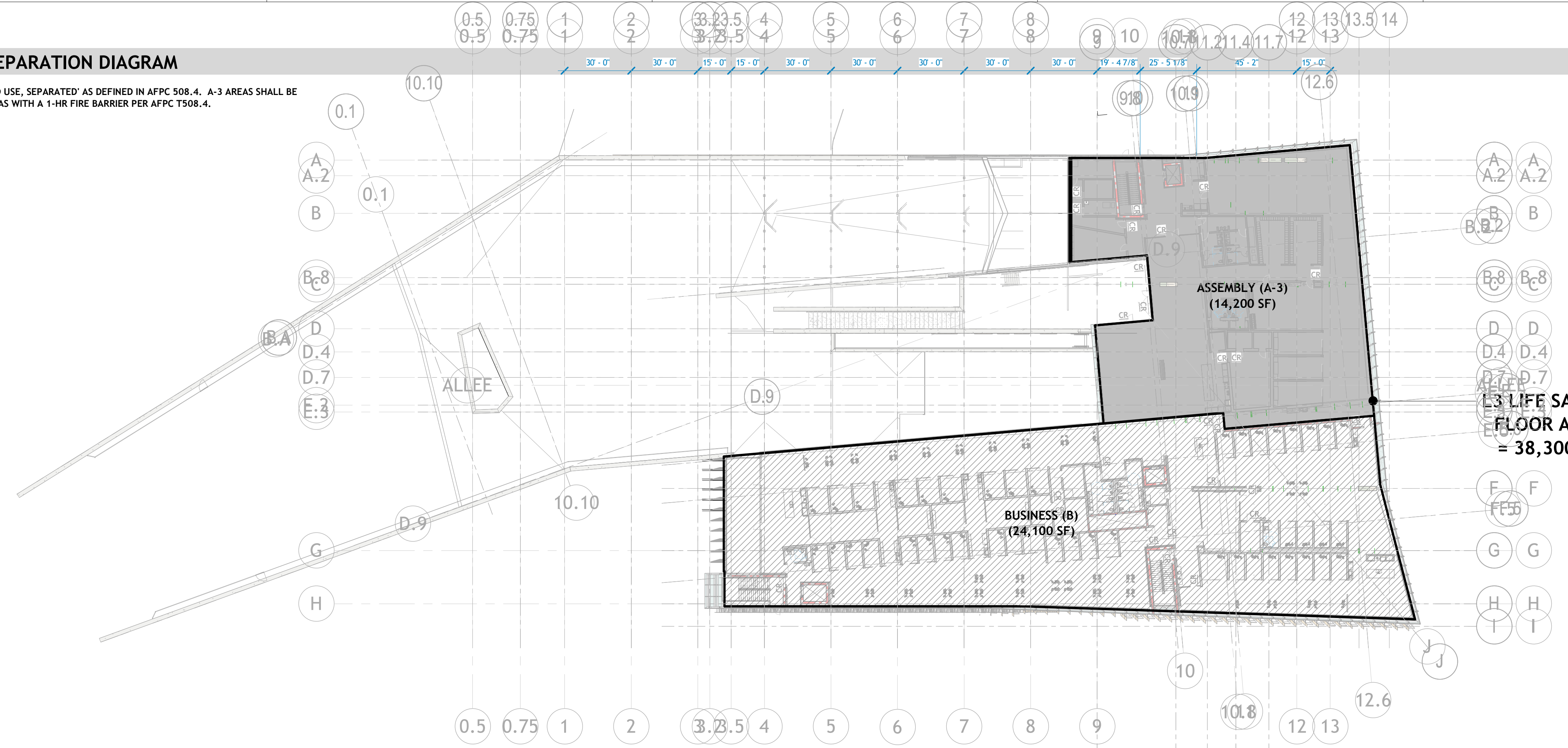
RATED WALL PERMANENT LABEL KEY

PROVIDE PERMANENT SIGNS OR STENCILING IN ACCESSIBLE CONCEALED FLOOR AND FLOOR-CEILING SPACES FOR ALL RATED WALL ASSEMBLIES. LOCATE LABELS WITHIN 15 FEET OF THE END OF EACH WALL AND AT INTERVALS NOT EXCEEDING 30 FEET MEASURED HORIZONTALLY ALONG THE WALL OR PARTITION. PROVIDE LABELING ON EACH SIDE OF WALL.
REFER TO UNDERLINED PORTIONS OF EXPLANATIONS BELOW FOR LABEL TEXT REQUIRED. REFER TO LIFE SAFETY PLAN FOR LOCATIONS AND EXTENTS.

- 10 1 HR FIRE BARRIER - PROTECT ALL OPENINGS, AT OCCUPANCY SEPARATION WALLS (AFPC/IBC SECTION 508.4)
- 15 1 HR FIRE BARRIER - PROTECT ALL OPENINGS, AT SHAFT OR EGRESS CIRCULATION CONNECTING LESS THAN 4 STORIES (AFPC/IBC SECTION 713.4/1023.2)
- 17 1 HR FIRE BARRIER - PROTECT ALL OPENINGS, AT FIRE RISER ROOM
- 25 2 HR FIRE BARRIER - PROTECT ALL OPENINGS, AT SHAFT OR EGRESS CIRCULATION CONNECTING 4 OR MORE STORIES (AFPC/IBC SECTION 713.4/1023.2)

L3 OCCUPANCY SEPARATION DIAGRAM

LEVEL THREE OCCUPANCY IS 'MIXED USE, SEPARATED' AS DEFINED IN AFPC 508.4. A-3 AREAS SHALL BE SEPARATED FROM BUSINESS(B) AREAS WITH A 1-HR FIRE BARRIER PER AFPC 708.4.



L3 OCCUPANCY COUNT AND FIXTURE LOADING

| LEVEL 3 OCCUPANCY CLASSIFICATION PER 2021 (DRAFT) ARKANSAS FIRE PREVENTION CODE | LEVEL 3 FUNCTION OF SPACE BREAKDOWN AND OCCUPANT COUNT PER 2021 (DRAFT) ARKANSAS FIRE PREVENTION CODE | | OCCUPANCY PER ACTUAL USE OF SPACE | CLASSIFICATION | LEVEL 3 PLUMBING FIXTURE COUNTS REQUIRED (AND PROVIDED) PER 2018 INTERNATIONAL PLUMBING CODE | | | | | | | | | | | | NOTES: | | | | | | | | | | | | | | | | | | |
|--|--|------------------|-----------------------------------|----------------|---|--|----|-----------------------|--|------------|---|-----------------------------|------|--------------------|-------------------|--------------|-------------------|-------------------|----------|----------|--|--|--|--|--|--|--|--|--|--|--|--|--|--|--|
| | BUSINESS (B) | ASSEMBLY (A-3) | | | TOTAL OCC. IN CLASS. | WATER CLOSETS | | WATER CLOSETS PER SEX | | LAVATORIES | | LAVS PER SEX | | DRINKING FOUNTAINS | | SERVICE SINK | | | | | | | | | | | | | | | | | | | |
| | | | | | MALE | FEMALE | M | F | MALE | FEMALE | M | F | MALE | FEMALE | M | F | TOTAL DF REQUIRED | TOTAL SS REQUIRED | | | | | | | | | | | | | | | | | |
| BUSINESS (B) ASSEMBLY (A-3) (1-HR SEPARATED, AT STUDENT AREA) | BUSINESS AREAS - TYPICAL LOADING 21,000 SF @ 100 SF / OCC | | 211 OCC | BUSINESS | 314 | 1:25 FOR FIRST 50, THEN 1:50 @ 314 = 8 REQUIRED | 4 | 4 | 1:40 FOR FIRST 80, THEN 1:80 @ 314 = 5 REQUIRED | 3 | 3 | 1:100 @ 314 = 4 REQUIRED | 1 | REQUIRED | 1 | REQUIRED | 5 | 1 | | | | | | | | | | | | | | | | | |
| | STORAGE / MECHANICAL / UTILITY 740 SF @ 300 SF / OCC | | 3 OCC | | | | | | | | | | | | | | | | | | | | | | | | | | | | | | | | |
| | ASSEMBLY AREAS - CONFERENCE ROOMS @ 15 SF / OCC (SEE PLAN) | | 100 OCC | | | | | | | | | | | | | | | | | | | | | | | | | | | | | | | | |
| | STUDY ROOM (LIBRARY READING ROOM, SIMILAR) @ 15 SF / OCC (SEE PLAN) | | 66 OCC | | | | | | | | | | | | | | | | | | | | | | | | | | | | | | | | |
| | ASSEMBLY AREAS - MISC UNCONCENTRATED @ 15 SF / OCC (SEE PLAN) | | 270 OCC | | | | | | | | | | | | | | | | | | | | | | | | | | | | | | | | |
| EXERCISE AREAS 1230 @ 50 SF GROSS / OCC | | 25 OCC | | | | | | | | | | | | | | | | | | | | | | | | | | | | | | | | | |
| STORAGE / MECHANICAL / UTILITY 545 SF @ 300 SF / OCC | | 2 OCC | | | | | | | | | | | | | | | | | | | | | | | | | | | | | | | | | |
| TOTAL L3 OCCUPANCY | | = 677 OCC | | | | | | | | | | | | | | | 5 | 1 | 1 | 8 | | | | | | | | | | | | | | | |
| | | | | | TOTAL TOILETS PROVIDED | 6 | 10 | TOTAL LAVS PROVIDED | | 4 | 7 | TOTAL DF PROVIDED | | 8 | TOTAL SS PROVIDED | | 1 | | | | | | | | | | | | | | | | | | |

L3 - LIFE SAFETY PLAN

1/16" = 1'-0"

AW-2023-1-1-194

WALL TERMINATION KEY
 REFER TO A675 FOR CLOSURE DETAILS. SEE ALSO ENLARGED PLANS WHERE OCCUR.
 WE1 WALL END / CLOSURE AT SPECIFIC CONDITION

801 South Spring Street
 Little Rock, AR 72201
 501.378.0878 office
 509 W. Spring St. | Suite 150
 Fayetteville, AR 72701
 479.444.0873 office
 polkstanleywilcox.com

CIVIL
 McCalland Consulting Engineers, Inc.
 1586 E STEARNS ST.
 FAYETTEVILLE, AR 72703
 P: 479.443.2377

LANDSCAPE
 OSD
 115 ST. JOHNS PLACE
 BROOKLYN, NY 11217
 P: 917.553.5886

STRUCTURAL
 Martin Consulting Engineers
 808 SOUTH WALTON BLVD., STE. 7
 BENTONVILLE, AR 72712
 P: 479.459.5945

MEPP - LOW VOLTAGE
 Henderson Engineers
 8340 LEXENA DRIVE, STE. 300
 LEXENA, MO 62214
 P: 913.660.8197

SUSTAINABILITY
 SOM
 224 SOUTH MORGAN AVENUE
 CHICAGO, IL 60604
 P: 312.360.4121

SIGNAGE + WAYFINDING
 TWO TWELVE
 239 W. 27th ST., SUITE 802
 NEW YORK, NY 10001
 P: 212.254.9870

FOOD SERVICE
 JMC HOSPITALITY
 8605 SIX PINES DR., SUITE 8210
 THE WOODLANDS, TX 77380
 P: 689.841.2222

WATER FEATURES
 OTL
 2150 S. TOWNE CENTER, SUITE 100
 ANAHEIM, CA 92806
 P: 714.637.4747

IRRIGATION
 WC3 DESIGN
 11A HOBSON MANOR BLVD.
 ROCKESIDE, PA 14135
 P: 844.231.7042

PSW Job Number:
993A



AWSOM
 Bentonville, AR

Issue Date:
02.24.2023

| REVISIONS | | |
|-----------|------------|-------------|
| NUMBER | DATE | DESCRIPTION |
| 1 | 03.13.2023 | ADDENDUM 1 |
| 2 | 06.09.2023 | ADDENDUM 2 |
| 3 | 08.04.2023 | PR-034 |
| 4 | 01.12.2024 | PR-035 |
| 5 | 02.26.2024 | PR-036 |
| 6 | 04.02.2024 | PR-043 |

Contents:
 NOTE PLAN -
 LEVEL 1 AREA A

THIS PAGE IS BEST VIEWED IN COLOR
A101A

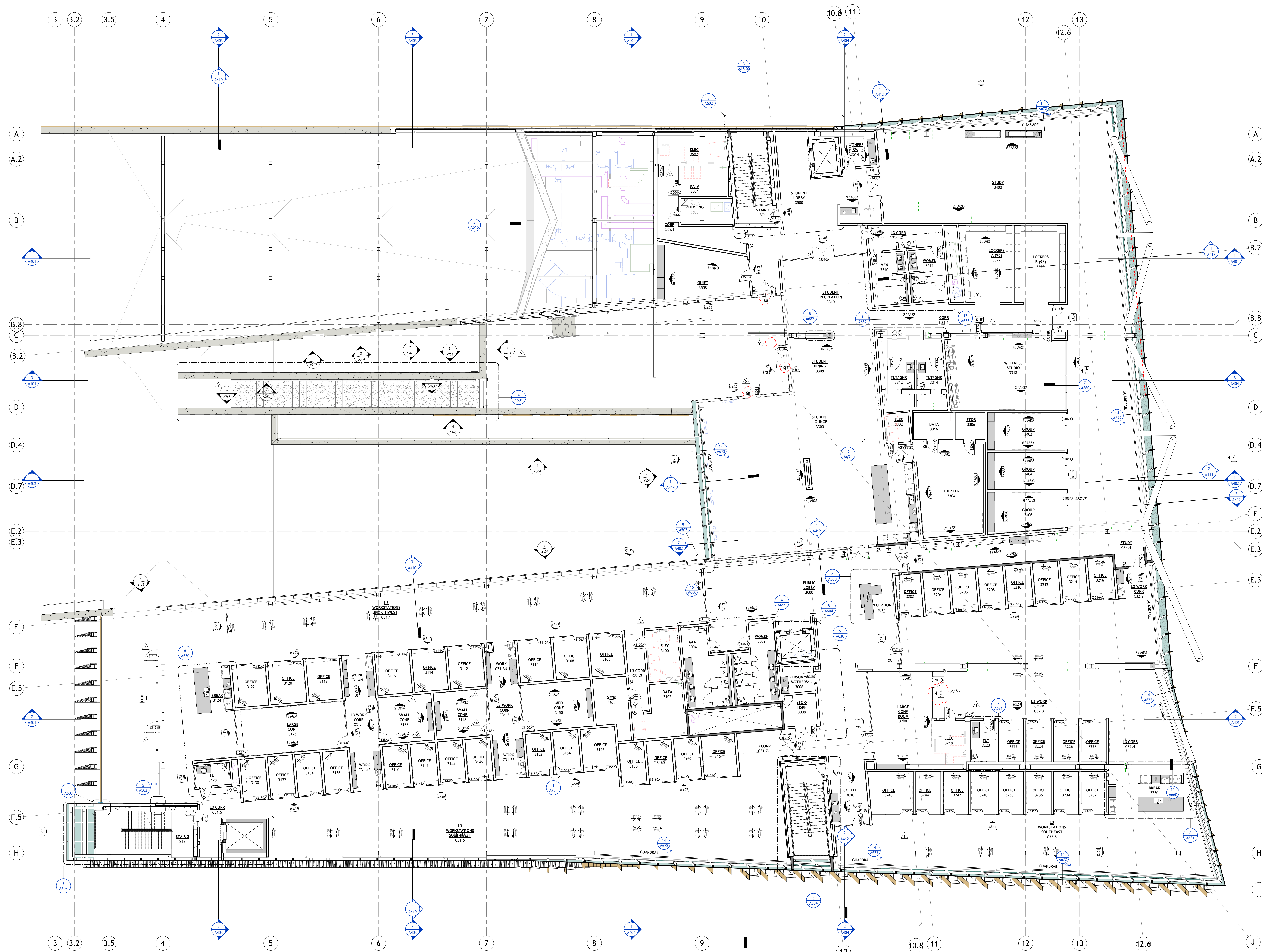


L1 - NOTE PLAN - AREA A
 1/8" = 1'-0"

02/24/2023 11:00 AM: PLOT PREPARED BY: P. WILCOX
 02/24/2023 10:55 AM: PLOT PREPARED BY: P. WILCOX
 02/24/2023 10:50 AM: PLOT PREPARED BY: P. WILCOX
 02/24/2023 10:45 AM: PLOT PREPARED BY: P. WILCOX
 02/24/2023 10:40 AM: PLOT PREPARED BY: P. WILCOX
 02/24/2023 10:35 AM: PLOT PREPARED BY: P. WILCOX
 02/24/2023 10:30 AM: PLOT PREPARED BY: P. WILCOX
 02/24/2023 10:25 AM: PLOT PREPARED BY: P. WILCOX
 02/24/2023 10:20 AM: PLOT PREPARED BY: P. WILCOX
 02/24/2023 10:15 AM: PLOT PREPARED BY: P. WILCOX
 02/24/2023 10:10 AM: PLOT PREPARED BY: P. WILCOX
 02/24/2023 10:05 AM: PLOT PREPARED BY: P. WILCOX
 02/24/2023 10:00 AM: PLOT PREPARED BY: P. WILCOX



| REVISIONS | | |
|-----------|------------|-------------|
| NUMBER | DATE | DESCRIPTION |
| 1 | 03.13.2023 | ADDENDUM 1 |
| 2 | 08.09.2023 | ADDENDUM 2 |
| 3 | 08.04.2023 | PRV 04 |
| 4 | 11.19.2023 | ASB 01 |
| 5 | 12.29.2023 | PRV 03 |
| 6 | 04.02.2024 | PRV 04 |



1 | L3 - NOTE PLAN, AREA A
1/8" = 1'-0"

PSW Job Number:
993A

AWSOM
 Bentonville, AR



Issue Date:
02.24.2023

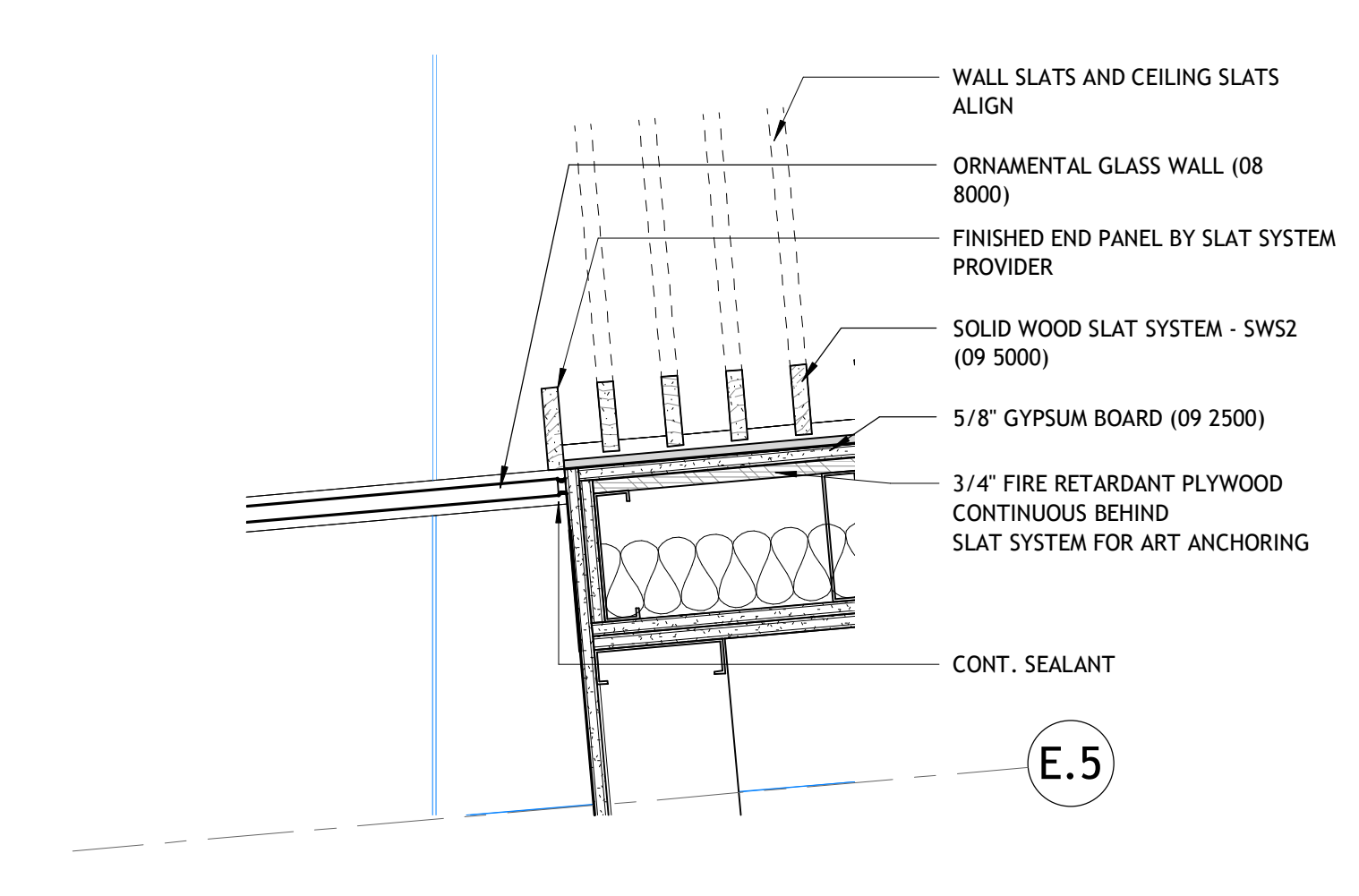
| REVISIONS | |
|-----------|------------|
| NUMBER | DATE |
| 1 | 03.13.2023 |
| 2 | 06.09.2023 |
| 3 | 04.02.2024 |

Contents:
**NOTE PLAN -
 LEVEL 4 AREA A**

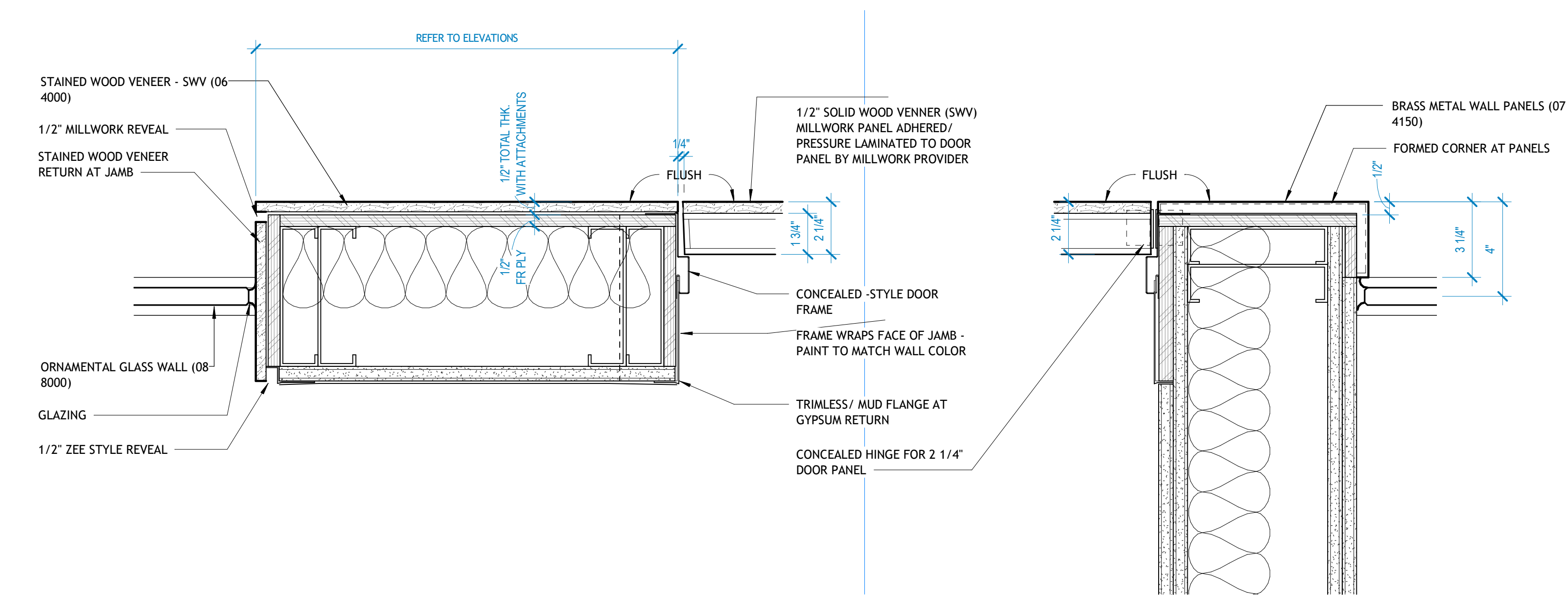
THIS PAGE IS BEST
 VIEWED IN COLOR
A104A



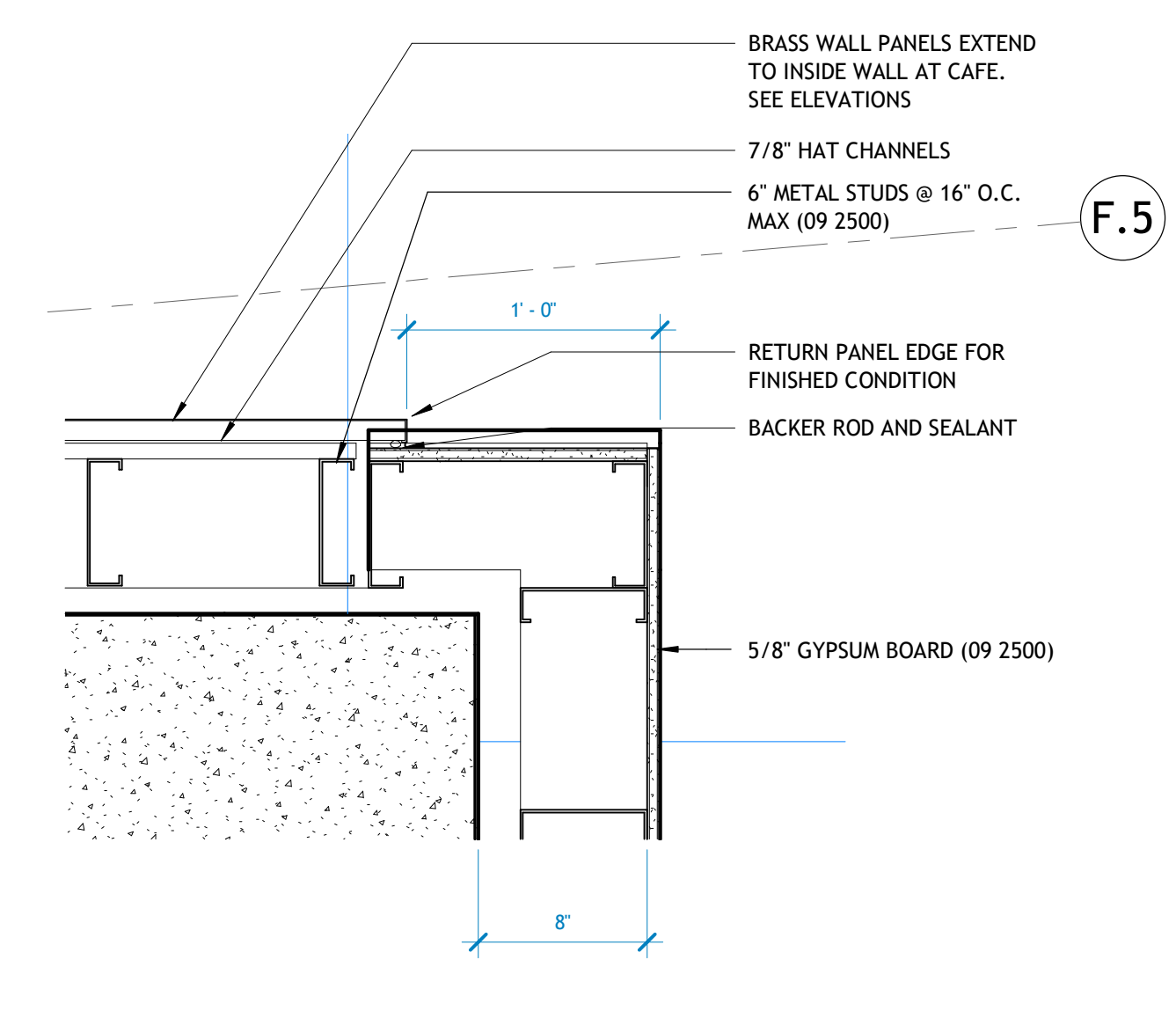
1 | L4 - 1/8" NOTE PLAN - AREA A
 1/8" = 1'-0"



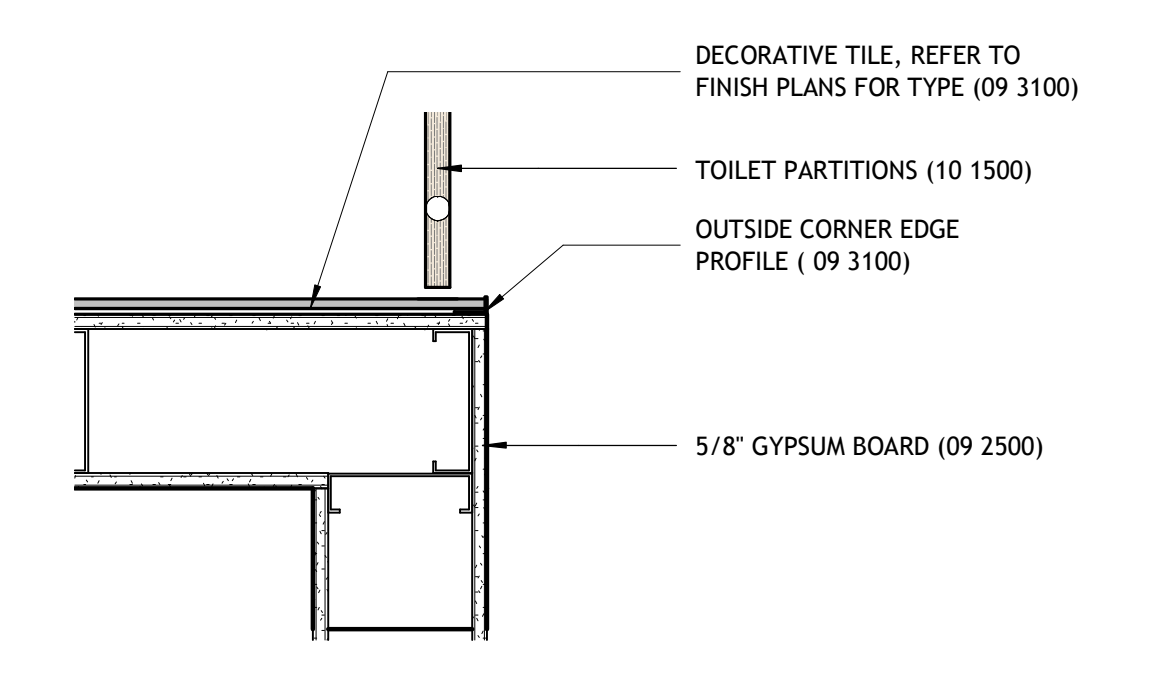
4 | SWS WALL DETAIL AT GLAZING
1 1/2" = 1'-0"



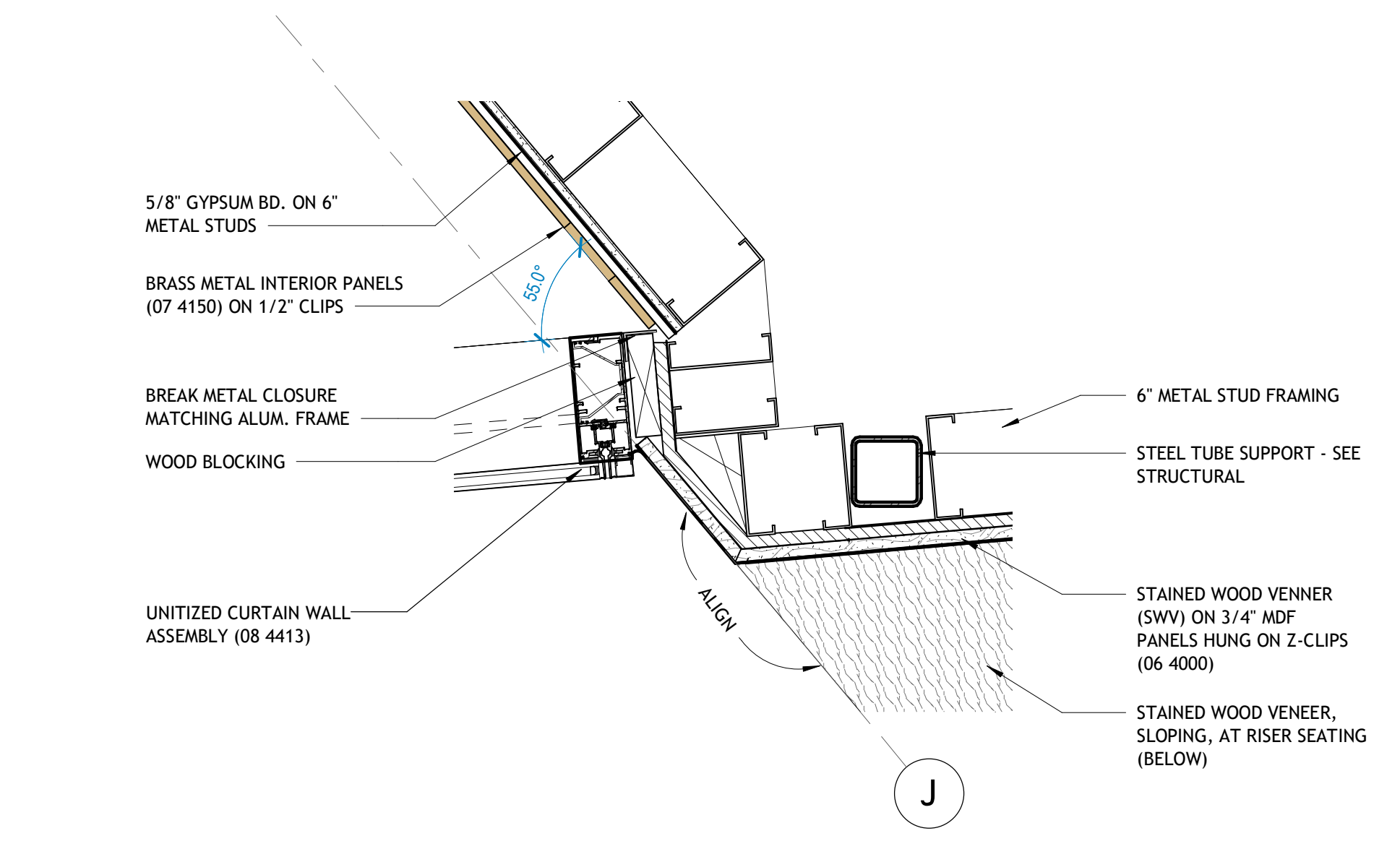
3 | FRAMELESS DOOR, FLUSH TO MILLWORK PANELS
3" = 1'-0"



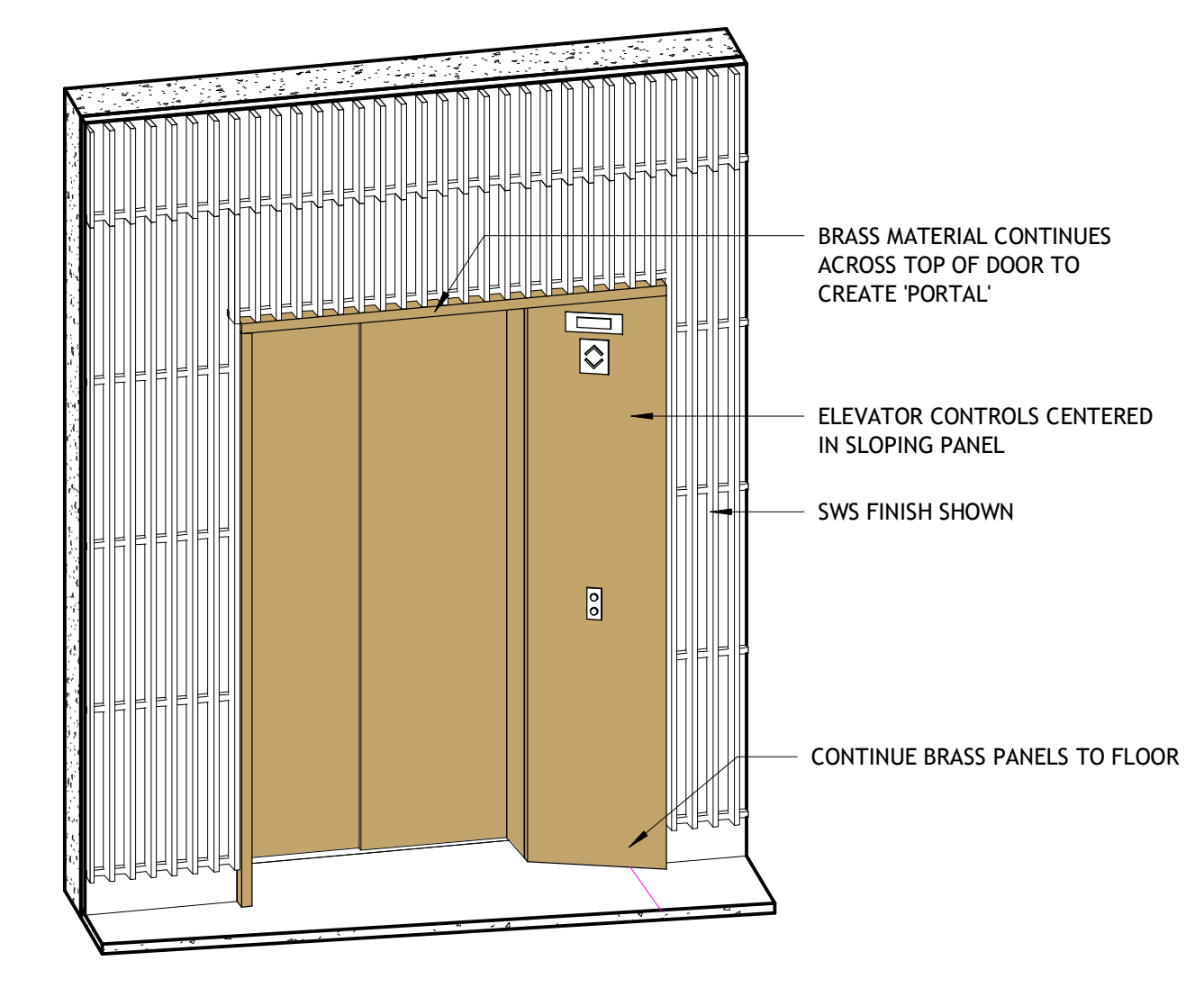
2 | BRASS PANEL END AT CAFE
1 1/2" = 1'-0"



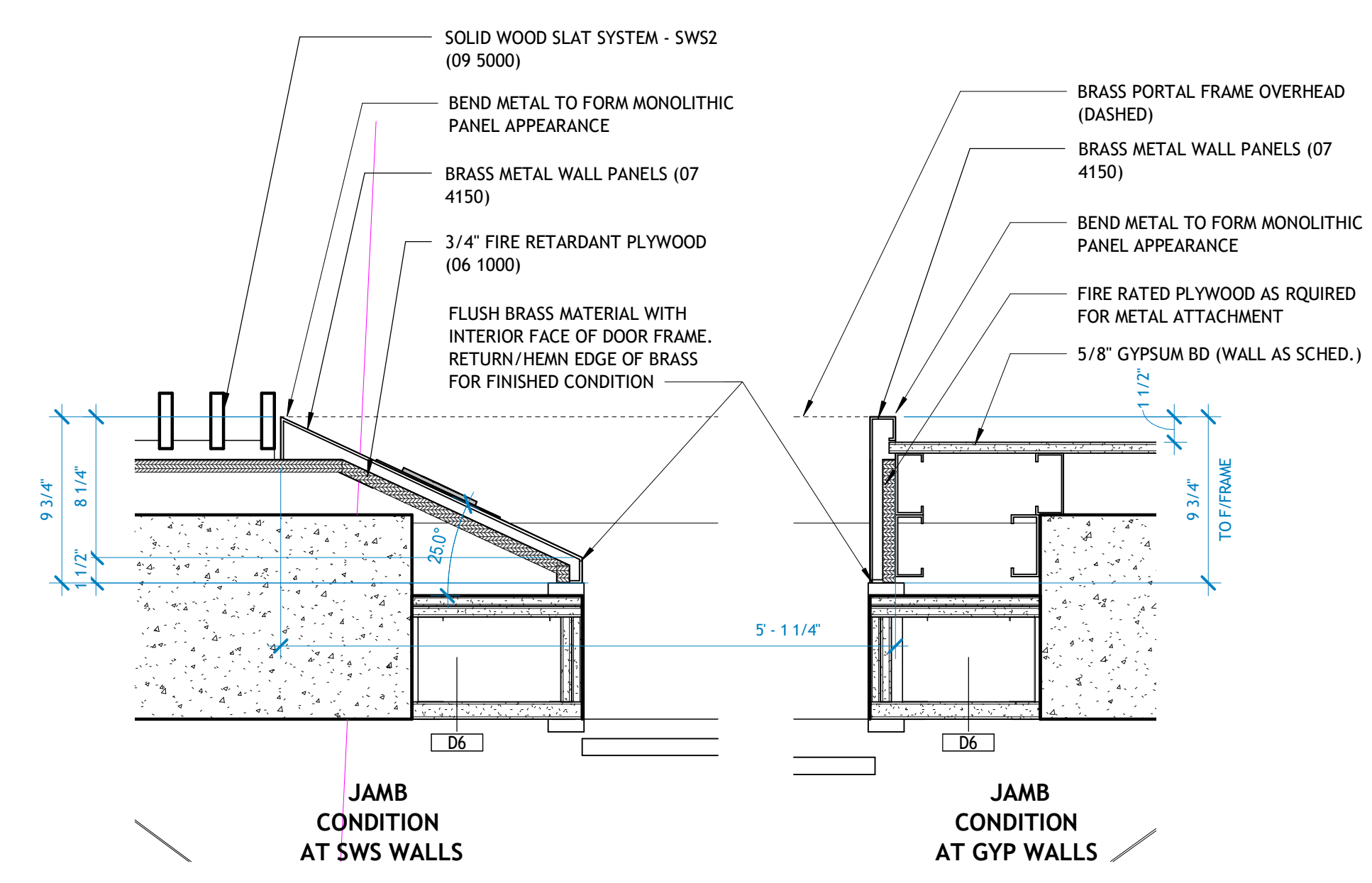
1 | TILE AT OUTSIDE CORNER
1 1/2" = 1'-0"



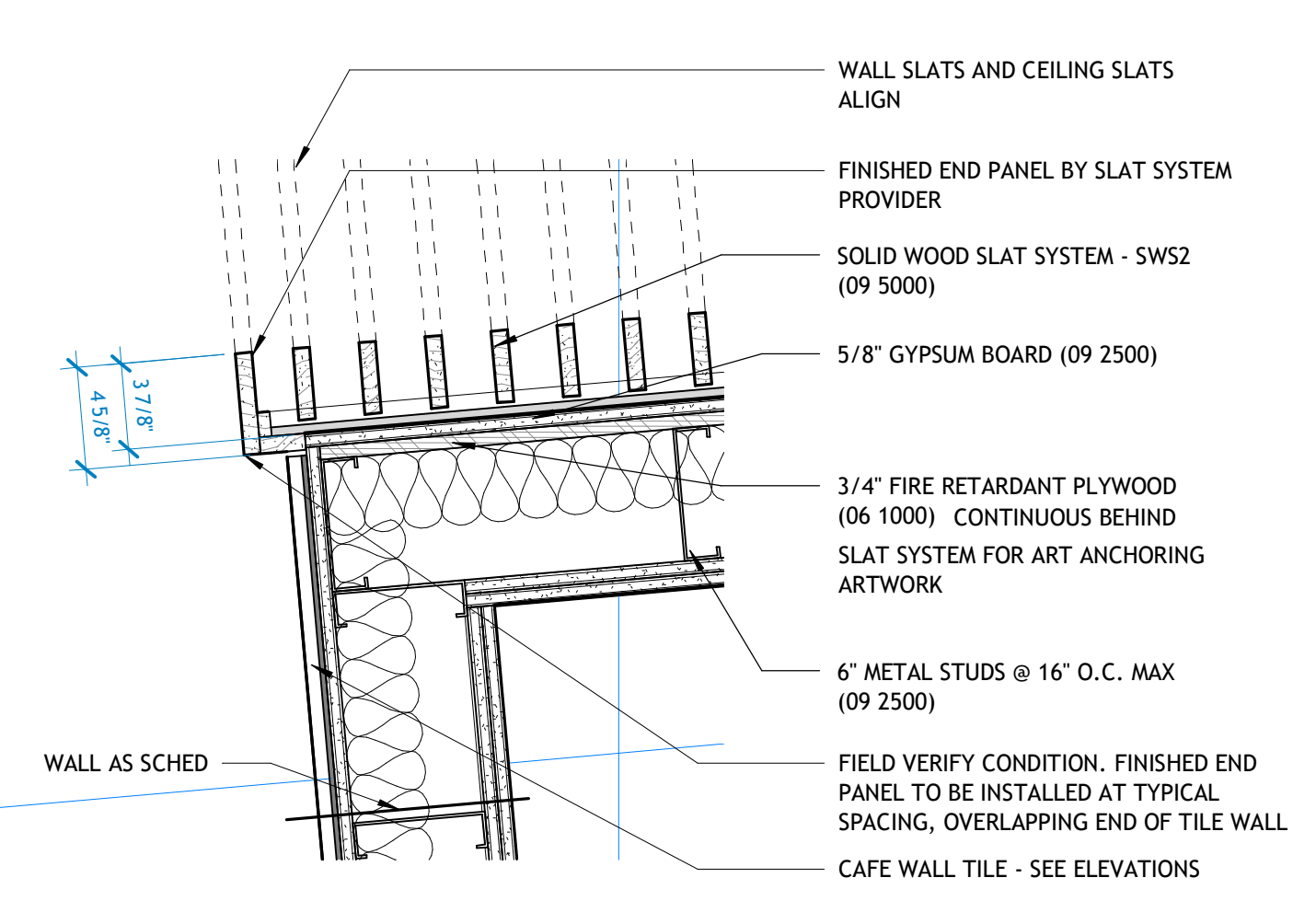
8 | L1 1100 VESTIBULE SE CORNER
1 1/2" = 1'-0"



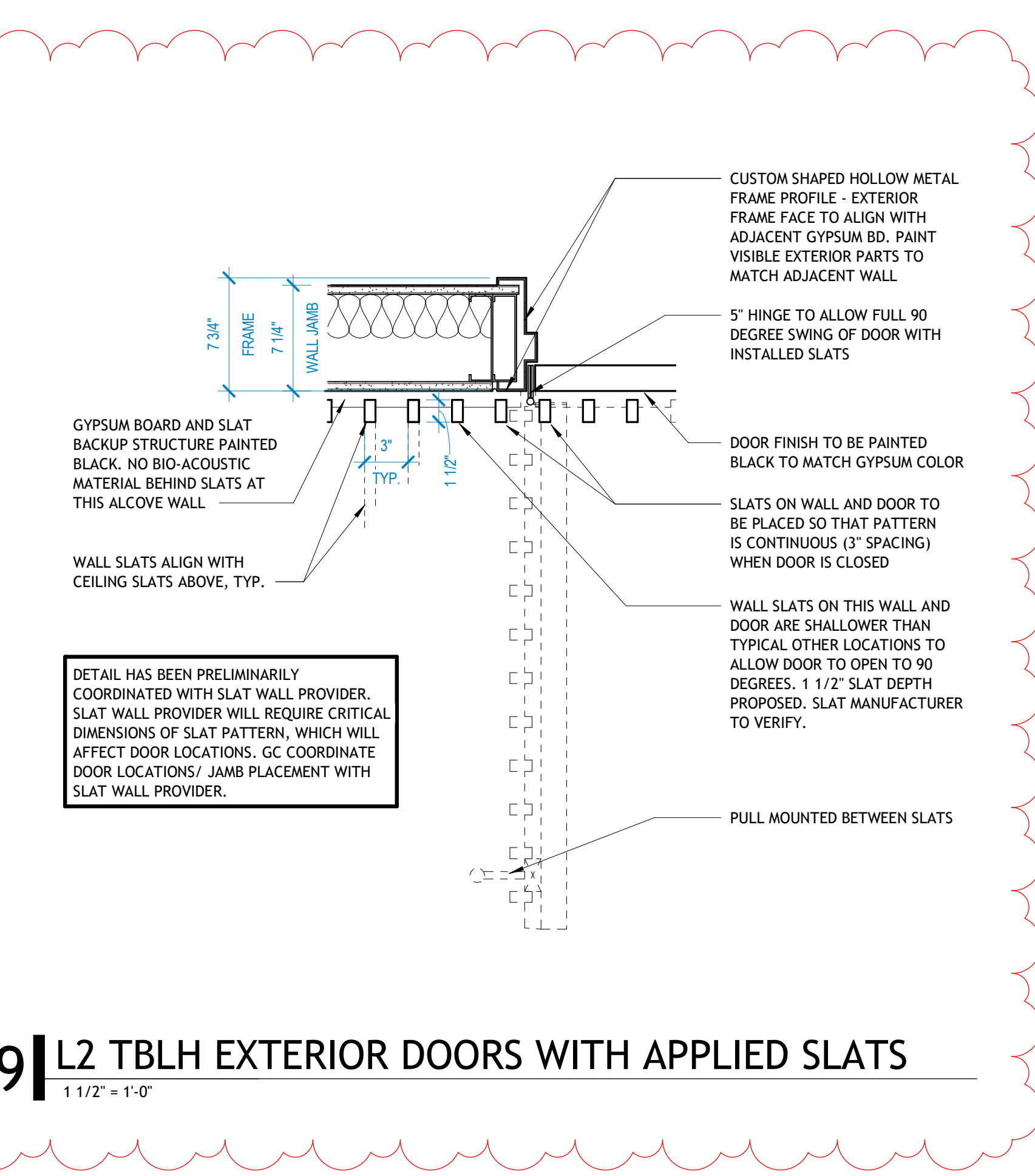
7 | ELEVATOR SURROUND, TYPICAL THROUGHOUT



6 | ELEVATOR SURROUND
1 1/2" = 1'-0"



5 | SWS CORNER AT CAFE
1 1/2" = 1'-0"



9 | L2 TBLH EXTERIOR DOORS WITH APPLIED SLATS
1 1/2" = 1'-0"

DOOR SCHEDULE - STANDARD DOORS AND FRAMES

| NO. | TO ROOM | DOOR TYPE | WIDTH | HEIGHT | MATERIAL | PANEL TYPE | FRAME TYPE | FIRE RATING | ELECTRICAL NOTES | DOOR HARDWARE | GENERAL NOTES |
|-------|----------------------------|-----------|-------|--------|----------|------------|------------|-------------|------------------|---------------|--|
| 0102A | LD PARKING | SINGLE | 4'-0" | 7'-8" | HWA | F | F1M | HM | | 19.1 | PANIC |
| 0102B | LD PARKING | SINGLE | 3'-0" | 7'-8" | HWA | F | F1M | HM | | 19.1 | PANIC |
| 0102C | LD PARKING | DOUBLE | 6'-0" | 7'-8" | HWA | F | F2M | HM | | 15.1 | |
| 0104A | LD PARKING | DOUBLE | 6'-0" | 7'-8" | HWA | F | F2M | HM | | 15.1 | |
| 0104B | LD PARKING | SINGLE | 4'-0" | 7'-8" | HWA | F | F1M | HM | | 18.1 | |
| 0105A | LD PARKING | DOUBLE | 6'-0" | 7'-8" | HWA | F | F2M | HM | | 15.1 | |
| 0112A | LD PARKING | DOUBLE | 6'-0" | 7'-8" | HWA | F | F2M | HM | | 15.1 | |
| 0114A | LD PARKING | SINGLE | 3'-0" | 7'-8" | HWA | F | F1M | HM | | 18.2 | PANIC |
| 0116A | LD PARKING | SINGLE | 4'-0" | 7'-8" | HWA | F | F1M | HM | | 18.0 | |
| 0118A | LD PARKING | DOUBLE | 6'-0" | 7'-8" | HWA | F | F2M | HM | | 16.0 | |
| 0119 | LD PARKING | SINGLE | 3'-0" | 7'-8" | HWA | F | F1M | HM | | 18.0 | |
| 0120A | LD PARKING | SINGLE | 3'-0" | 7'-8" | HWA | F | F1M | HM | | 18.0 | |
| 0122A | LD PARKING | DOUBLE | 6'-0" | 7'-8" | HWA | F | F2M | HM | 45 | 15.1 | |
| 0122B | LD PARKING | SINGLE | 3'-0" | 7'-8" | HWA | F | F1M | HM | | 18.0 | |
| 0124A | LD PARKING | DOUBLE | 6'-0" | 7'-8" | HWA | F | F2M | HM | | 15.2 | PANIC |
| 0124C | LD PARKING | DOUBLE | 6'-0" | 8'-0" | HWA | F | F2 | HM | | 15.0 | PANIC |
| 0124D | LD PARKING | SINGLE | 3'-0" | 7'-8" | HWA | F | F1M | HM | | 19.1 | |
| 0126A | LD PARKING | DOUBLE | 6'-0" | 7'-8" | HWA | F | F2M | HM | | 15.0 | |
| 1106A | WARNING | DOUBLE | 6'-0" | 8'-0" | PL2 | F | F2 | HM | | 55 | |
| 1110A | TLT | SINGLE | 3'-0" | 8'-0" | SCS | F | F1 | HM | | 29.0 | |
| 1112A | AVY | SINGLE | 3'-0" | 8'-0" | SCS | F | F1 | HM | | 82.0 | |
| 1116A | TOILET ALCOVE | SINGLE | 3'-0" | 8'-0" | SCS | F | F1 | HM | | 84.0 | |
| 1118A | TOILET ALCOVE | SINGLE | 3'-0" | 8'-0" | SCS | F | F1 | HM | | 84.0 | |
| 1120A | STAR ALCOVE | SINGLE | 3'-0" | 8'-0" | PL2 | F | F1 | HM | | 41.0 | PAINT DOOR TO MATCH ADJACENT ACCENT WALL |
| 1201A | CTRL | SINGLE | 3'-0" | 8'-0" | PL2 | F | F1 | HM | | 50.0 | |
| 1202A | CTRL | SINGLE | 3'-0" | 8'-0" | PL2 | F | F1 | HM | | 41.1 | |
| 1204A | SIMULATION CORRIDOR | SINGLE | 3'-0" | 8'-0" | PL2 | F | F1 | HM | | 41.0 | |
| 1206A | SIMULATION CORRIDOR | DOUBLE | 6'-0" | 8'-0" | PL2 | F | F2 | HM | | 80.0 | |
| 1207A | SIMULATION CORRIDOR | DOUBLE | 6'-0" | 8'-0" | PL2 | F | F2 | HM | | CR 25.0 | |
| 1208A | SIMULATION CORRIDOR | DOUBLE | 6'-0" | 8'-0" | PL2 | F | F2 | HM | | CR 30.0 | |
| 1214A | OPERATING ROOM | DOUBLE | 6'-0" | 8'-0" | PL1 | F | F1 | HM | | CR 23.0 | |
| 1216A | CTRL | SINGLE | 3'-0" | 8'-0" | PL2 | F | F1 | HM | | 56.0 | |
| 1226A | CTRL | SINGLE | 3'-0" | 8'-0" | PL2 | F | F1 | HM | | 56.0 | |
| 1228A | CTRL | SINGLE | 3'-0" | 8'-0" | PL2 | F | F1 | HM | | 56.0 | |
| 1300A | SOUTHEAST CORR | SINGLE | 3'-0" | 8'-0" | SCS | F | F1 | HM | | 80.0 | |
| 1304A | SOUTHEAST CORR | SINGLE | 3'-0" | 8'-0" | SCS | F | F1 | HM | | 80.0 | |
| 1306A | SOUTHEAST CORR | SINGLE | 3'-0" | 8'-0" | SCS / MW | F | FCF / MW | PER / MFR | | 74.0 | CLOSER ON ROOM SIDE. CONCEALED HINGES. |
| 1308A | SOUTHEAST CORR | SINGLE | 3'-0" | 8'-0" | SCS / MW | F | FCF / MW | PER / MFR | | 74.0 | CLOSER ON ROOM SIDE. CONCEALED HINGES. |
| 1309C | WELCOME DESK | SINGLE | 3'-0" | 8'-0" | SCS / MW | F | FCF / MW | PER / MFR | | 77.0 | CLOSER ON ROOM SIDE. CONCEALED HINGES. |
| 1310C | L1 NORTH EAST CORR | DOUBLE | 6'-0" | 8'-0" | PL2 | F | F2 | HM | | CR 25.0 | |
| 1312A | ELEC | SINGLE | 3'-0" | 8'-0" | PL2 | F | F1 | HM | | 39.1 | |
| 1314A | L1 NORTH EAST CORR | SINGLE | 4'-0" | 8'-0" | SCS / MW | F | FCF / MW | PER / MFR | | CR 81.0 | CLOSER ON ROOM SIDE. CONCEALED HINGES. |
| 1318A | TLT | SINGLE | 3'-0" | 8'-0" | SCS | F | F1 | HM | | 81.0 | |
| 1400B | MISC. CARTS | SINGLE | 3'-0" | 8'-0" | PL2 | F | F1 | HM | | 57.0 | |
| 1400A | ANATOMY RESOURCE CENTER | DOUBLE | 6'-0" | 8'-0" | PL2 | F | F2 | HM | | 82.0 | |
| 1412A | GWA | SINGLE | 3'-0" | 8'-0" | SCS | F | F1 | HM | | 83.0 | |
| 1414A | GWA | SINGLE | 3'-0" | 8'-0" | SCS | F | F1 | HM | | 83.0 | |
| 1416A | ADA SHR | SINGLE | 3'-0" | 8'-0" | SCS | F | F1 | HM | | 83.0 | |
| 1500A | TECH SUPPORT | SINGLE | 3'-0" | 7'-0" | PL2 | F | F1 | HM | | 72.0 | |
| 1502A | STOR | SINGLE | 3'-0" | 8'-0" | PL2 | F | F1 | HM | | 56.0 | |
| 1504A | FACILITIES CONF | SINGLE | 3'-0" | 8'-0" | SCS | F | F1 | HM | | 78.0 | |
| 1506A | CORR | SINGLE | 3'-0" | 7'-0" | PL2 | F | F1 | HM | | 82.0 | |
| 1522A | SERVICES CORR | SINGLE | 3'-0" | 7'-0" | PL2 | F | F1 | HM | | 55.0 | |
| 1524A | TLT | SINGLE | 3'-0" | 7'-0" | SCS | F | F1 | HM | | 81.0 | |
| 1525A | TLT | SINGLE | 3'-0" | 7'-0" | SCS | F | F1 | HM | | 81.0 | |
| 1526A | SECURITY | SINGLE | 3'-0" | 7'-0" | SCS | F | F1 | HM | | CR 24.0 | |
| 1532A | SERVICES CORR | DOUBLE | 6'-0" | 7'-0" | PL2 | F | F2 | HM | | CR 24.0 | |
| 1532B | CORR | SINGLE | 3'-0" | 7'-0" | PL2 | F | F1 | HM | | CR 59.0 | |
| 1534A | SERVICES CORR | DOUBLE | 6'-0" | 7'-0" | PL2 | F | F2 | HM | | CR 24.0 | |
| 1536A | SERVICES CORR | DOUBLE | 6'-0" | 7'-0" | PL2 | F | F2 | HM | | CR 24.0 | |
| 1538A | SERVICES CORR | SINGLE | 3'-0" | 7'-0" | PL2 | F | F1 | HM | | CR 55.0 | |
| 1540A | SERVICES CORR | SINGLE | 3'-0" | 7'-0" | PL2 | F | F1 | HM | | CR 55.0 | |
| 1542A | SERVICES CORR | SINGLE | 3'-0" | 7'-0" | PL2 | F | F1 | HM | | CR 55.0 | |
| 1542B | L1 STOR | SINGLE | 3'-0" | 7'-0" | PL2 | F | F1 | HM | | CR 55.0 | |
| 1552A | BKZ GROTTO | SINGLE | 6'-0" | 7'-0" | HWA | F | F1 | HM | | 16.0 | |
| 1554A | BLDG SUPPORT - SHOP | SINGLE | 3'-0" | 7'-0" | HWA | F | F1 | HM | | 35.0 | |
| 1608A | TLT | SINGLE | 3'-0" | 8'-0" | PL1 | F | F1 | HM | | 81.0 | |
| 1610A | WORK | SINGLE | 3'-0" | 8'-0" | PL1 | F | F1 | HM | | 50.0 | CARD READER ON WORK SIDE |
| 1618B | CONTROL / TEAM OBSERVATION | SINGLE | 3'-6" | 8'-0" | PL1 | F | F1 | HM | | CR 58.0 | |
| 1620A | TLT | SINGLE | 3'-6" | 8'-0" | PL1 | F | F1 | HM | | CR 58.0 | |
| 1622A | CLINIC CORR | SINGLE | 3'-0" | 8'-0" | PL2 | F | F1 | HM | | CR 59.1 | |
| 1624A | CLINIC CORR | SINGLE | 3'-0" | 8'-0" | PL2 | F | F1 | HM | | CR 41.0 | |
| 1626A | MESH ROOM | SINGLE | 3'-0" | 7'-10" | PL2 | F | F1 | HM | | CR 41.0 | |
| 1632A | TLT | SINGLE | 3'-0" | 8'-0" | PL1 | F | F1 | HM | | CR 59.1 | |
| 1634A | TLT | SINGLE | 3'-0" | 8'-0" | PL1 | F | F1 | HM | | CR 59.1 | |
| 1644A | TLT | SINGLE | 3'-0" | 8'-0" | PL1 | F | F1 | HM | | CR 80.0 | |
| 1666A | PERSONAL CARE | SINGLE | 3'-0" | 8'-0" | SCS | F | F1 | HM | | CR 80.0 | |
| 1668A | OFFICE | SINGLE | 3'-0" | 8'-0" | SCS | F | F1 | HM | | CR 24.0 | |
| 1672A | SP LOUNGE / TRAIN | SINGLE | 3'-0" | 8'-0" | PL1 | F | F1 | HM | | CR 57.0 | |
| 1673B | SP LOUNGE / TRAIN | SINGLE | 3'-6" | 8'-0" | PL1 | F | F1 | HM | | CR 58.0 | |
| 1678B | TLT | SINGLE | 3'-0" | 8'-0" | PL1 | F | F1 | HM | | CR 57.0 | |
| 1678A | TLT | SINGLE | 3'-0" | 8'-0" | PL1 | F | F1 | HM | | CR 57.0 | |
| 1678C | CLINIC CORR | SINGLE | 3'-0" | 8'-0" | PL2 | F | F1 | HM | | CR 56.0 | |
| 1680A | DECANTAM | SINGLE | 3'-0" | 8'-0" | PL2 | F | F1 | HM | | CR 67.0 | |
| 1680A | TLT | SINGLE | 3'-6" | 8'-0" | PL1 | F | F1 | HM | | CR 81.0 | |
| 2102A | KITCHEN | SINGLE | 3'-0" | 8'-0" | PL2 | F | F1 | HM | | 81.0 | DOUBLE ACTING DOOR |
| 2104A | TLT | SINGLE | 3'-0" | 8'-0" | SCS | F | F1 | HM | | CR 81.0 | |
| 2106A | CAFE DINING | SINGLE | 3'-6" | 8'-0" | PL2 | F | F1 | HM | | CR 81.0 | |
| 2108A | OFFICE | SINGLE | 3'-0" | 8'-0" | PL2 | F | F1 | HM | | CR 73.0 | |
| 2202A | MONUMENTAL CORRIDOR | SINGLE | 3'-0" | 8'-0" | SCS | F | F1 | HM | | 84.0 | |
| 2204A | MONUMENTAL CORRIDOR | SINGLE | 3'-0" | 8'-0" | SCS | F | F1 | HM | | 84.0 | |
| 2206A | MED CLASS | SINGLE | 3'-6" | 8'-0" | PL1 | F | F1 | HM | | CR 81.0 | PANIC |
| 2208A | EDUCATION CORRIDOR | DOUBLE | 6'-0" | 7'-0" | SCS | F | F2 | HM | | CR 24.0 | |
| 2208B | EDUCATION CORRIDOR | SINGLE | 3'-0" | 8'-0" | HWA | F | F1 | HM | | 18.1 | PAINT TO MATCH LOUVER |
| 2212A | EDUCATION CORRIDOR | SINGLE | 3'-0" | 8'-0" | SCS / MW | F | FCF / MW | PER / MFR | | 77.0 | CLOSER ON ROOM SIDE. CONCEALED HINGES. |
| 2212B | EDUCATION CORRIDOR | SINGLE | 3'-0" | 8'-0" | SCS / MW | F | FCF / MW | PER / MFR | | 77.0 | CLOSER ON ROOM SIDE. CONCEALED HINGES. |
| 2214A | EDUCATION CORRIDOR | SINGLE | 3'-0" | 8'-0" | SCS / MW | F | FCF / MW | PER / MFR | | 77.0 | CLOSER ON ROOM SIDE. CONCEALED HINGES. |
| 2216A | EDUCATION CORRIDOR | SINGLE | 3'-0" | 8'-0" | SCS / MW | F | FCF / MW | PER / MFR | | 77.0 | CLOSER ON ROOM SIDE. CONCEALED HINGES. |
| 2218A | EDUCATION CORRIDOR | SINGLE | 3'-0" | 8'-0" | SCS / MW | F | FCF / MW | PER / MFR | | 77.0 | CLOSER ON ROOM SIDE. CONCEALED HINGES. |
| 2219A | EDUCATION CORRIDOR | SINGLE | 3'-0" | 8'-0" | PL2 | F | F1 | HM | | CR 59.0 | |
| 2220A | EDUCATION CORRIDOR | SINGLE | 3'-0" | 8'-0" | SCS / MW | F | FCF / MW | PER / MFR | | 77.0 | CLOSER ON ROOM SIDE. CONCEALED HINGES. |
| 2221A | LIBRARY CORR | DOUBLE | 6'-0" | 8'-0" | PL2 | F | F2 | HM | | 74.0 | CLOSER ON ROOM SIDE. CONCEALED HINGES. |
| 2222A | EDUCATION CORRIDOR | SINGLE | 3'-0" | 8'-0" | SCS / MW | F | FCF / MW | PER / MFR | | 74.0 | CLOSER ON ROOM SIDE. CONCEALED HINGES. |
| 2224A | EDUCATION CORRIDOR | SINGLE | 3'-0" | 8'-0" | SCS / MW | F | FCF / MW | PER / MFR | | 74.0 | CLOSER ON ROOM SIDE. CONCEALED HINGES. |
| 2302A | COFFEE | SINGLE | 3'-0" | 8'-0" | SCS / MW | F | FCF / MW | PER / MFR | | 77.0 | CLOSER ON ROOM SIDE. CONCEALED HINGES. |
| 2304A | COFFEE | SINGLE | 3'-0" | 8'-0" | SCS / MW | F | FCF / MW | PER / MFR | | 77.0 | CLOSER ON ROOM SIDE. CONCEALED HINGES. |
| 2306A | LIBRARY CORR | SINGLE | 3'-0" | 8'-0" | SCS / MW | F | FCF / MW | PER / MFR | | 77.0 | CLOSER ON ROOM SIDE. CONCEALED HINGES. |
| 2308A | LIBRARY CORR | SINGLE | 3'-0" | 8'-0" | SCS | F | F1 | HM | | CR 82.0 | |
| 2310A | LIBRARY CORR | SINGLE | 3'-0" | 8'-0" | SCS / MW | F | FCF / MW | PER / MFR | | 77.0 | CLOSER ON ROOM SIDE. CONCEALED HINGES. |
| 2312A | LIBRARY CORR | SINGLE | 3'-0" | 8'-0" | SCS / MW | F | FCF / MW | PER / MFR | | 77.0 | CLOSER ON ROOM SIDE. CONCEALED HINGES. |
| 2314A | MONUMENTAL CORRIDOR | SINGLE | 3'-0" | 8'-0" | SCS / MW | F | FCF / MW | PER / MFR | | 78.0 | CLOSER ON ROOM SIDE. CONCEALED HINGES. |
| 2320A | OFFICE | SINGLE | 3'-0" | 7'-0" | SCS | F | F1 | HM | | CR 73.0 | |
| 2400A | EDUCATION CORR | DOUBLE | 6'-0" | 8'-4" | SCS | F | F2 | HM | 45 | CR 36.0 | WOOD SLATS (GWS) APPLIED TO CORR SIDE. |
| 2400C | LOCK | DOUBLE | 6'-0" | 8'-4" | SCS | F | F2 | HM | 45 | CR 36.0 | WOOD SLATS (GWS) APPLIED TO CORR SIDE. |
| 2402A | AVY | SINGLE | 3'-0" | 8'-0" | PL2 | F | F1 | HM | | CR 57.0 | |
| 2404A | STORAGE | DOUBLE | 6'-0" | 9'-10" | PL2 | F | F2 | HM | 45 | CR | |

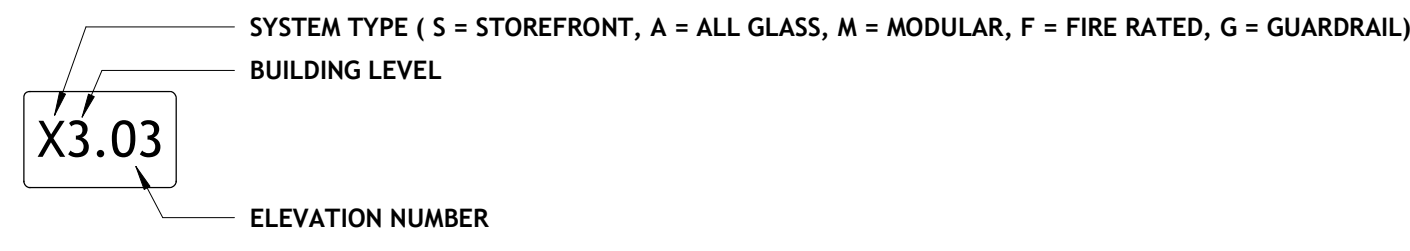
STOREFRONT : INTERIOR NON-RATED , CENTER GLAZED

SCALE: 1/4"=1'-0", UNLESS OTHERWISE NOTED.

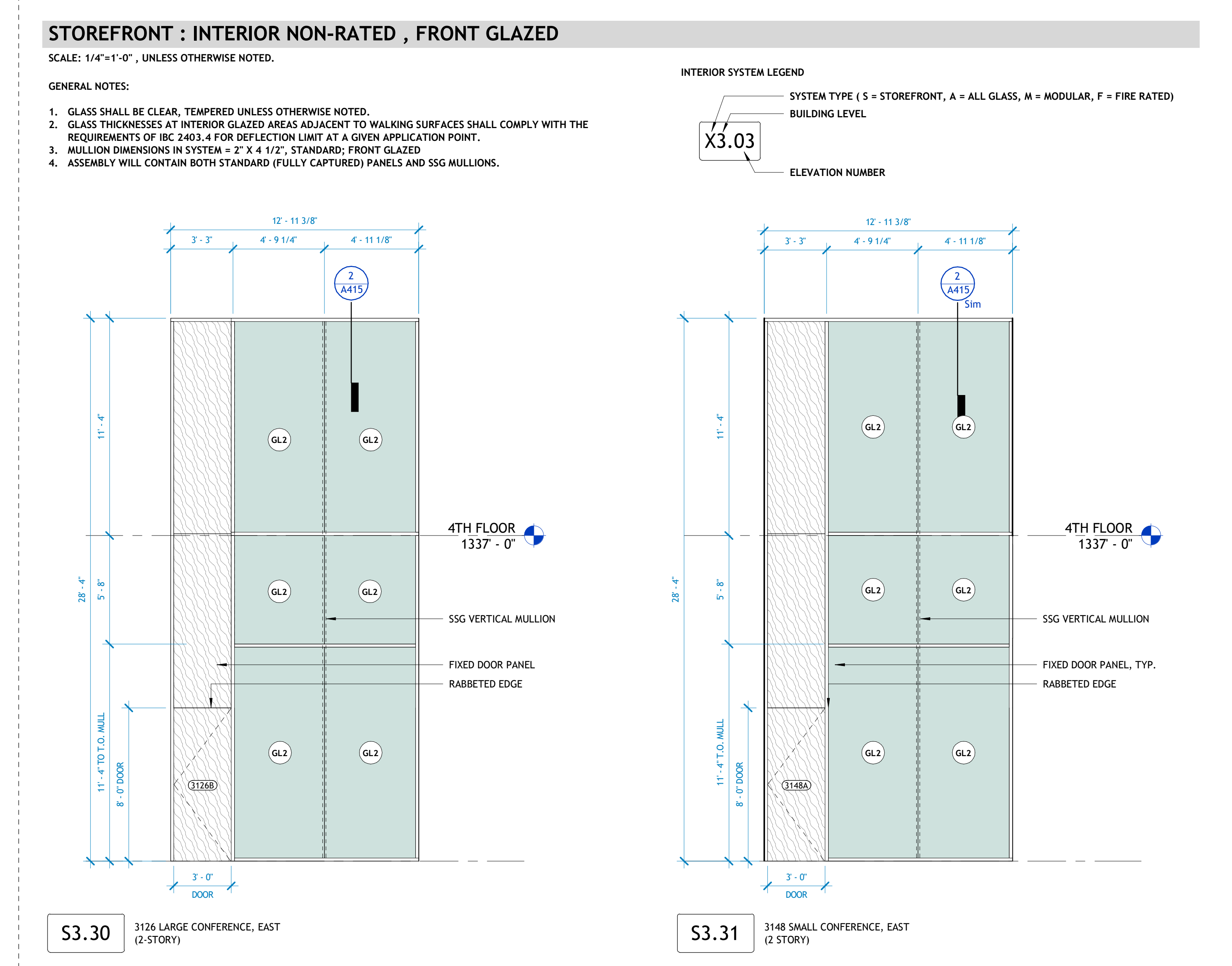
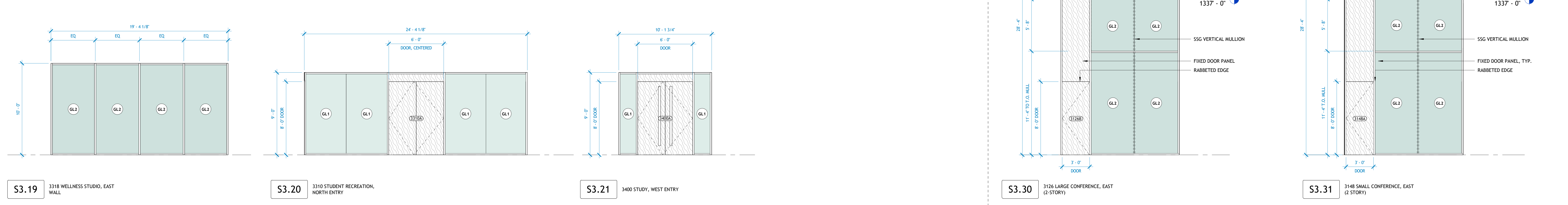
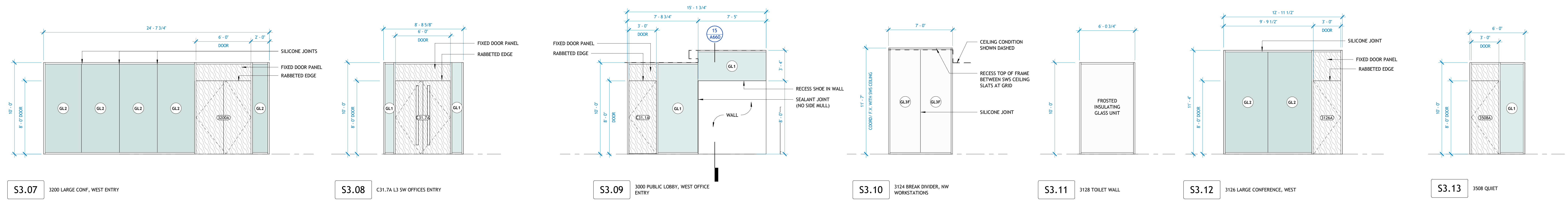
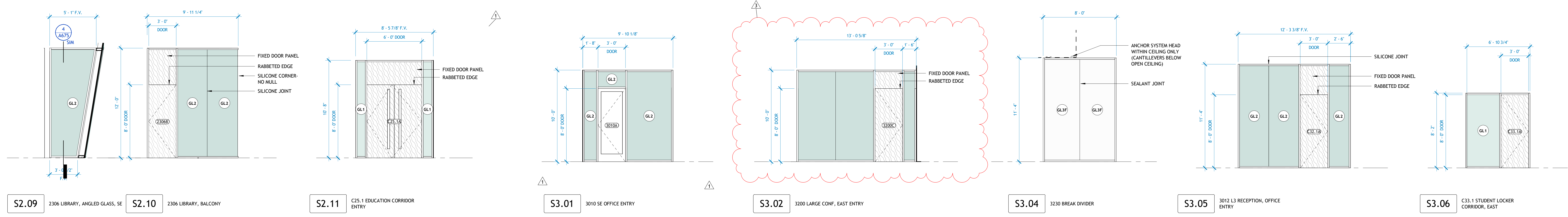
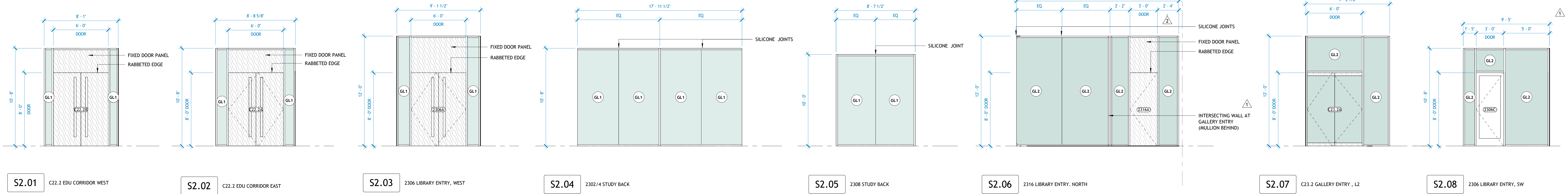
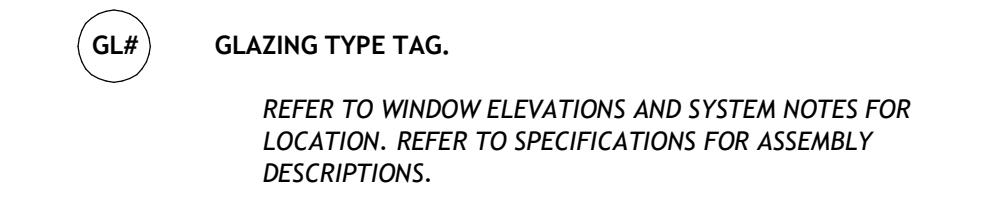
GENERAL NOTES:

- GLASS SHALL BE CLEAR, TEMPERED UNLESS OTHERWISE NOTED.
- GLASS THICKNESSES AT INTERIOR GLAZED AREAS ADJACENT TO WALKING SURFACES SHALL COMPLY WITH THE REQUIREMENTS OF IBC 2403.4 FOR DEFLECTION LIMIT AT A GIVEN APPLICATION POINT.
- MULLION DIMENSIONS IN SYSTEM = 2" X 4 1/2", STANDARD, FRONT GLAZED.
- ASSEMBLY WILL CONTAIN BOTH STANDARD PANELS (FULLY CAPTURED ALL SIDES) AND PANELS CAPTURED ON TOP AND BOTTOM ONLY WITHOUT VERTICAL MULLIONS (SILICONE JOINTS)

INTERIOR SYSTEM LEGEND



WINDOW SCHEDULE LEGEND



801 South Spring Street
Little Rock, AR 72201
501.378.0878 office
509.916.5914 | Suite 150
Fayetteville, AR 72701
479.444.0073 office
polkstanleywilcox.com

DLV
McClelland Consulting Engineers, Inc.
1586 E STEARNS ST
FAVETTEVILLE, AR 72703
P: 917.553.5886

LANDSCAPE
OSD
115 ST. JOHNS PLACE
BROOKLYN, NY 11217
P: 917.553.5886

STRUCTURAL
Martin Consulting Engineers
806 SOUTH WALTON BLVD, STE 107
BENTONVILLE, AR 72712
P: 479.497.0945

MEFP + LOW VOLTAGE
Henderson Engineers
8340 LENOXA DRIVE, STE 300
LENEXA, KS 66214
P: 913.660.8187

SUSTAINABILITY
SOM
224 SOUTH MICHIGAN AVENUE
CHICAGO, IL 60604
P: 312.362.4121

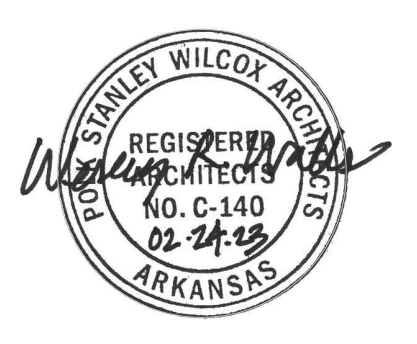
SIGNAGE + WAYFINDING
TWO TWELVE
239 W. 23RD ST., SUITE 802
NEW YORK, NY 10001
P: 212.254.9870

FOOD SERVICE
JMC HOSPITALITY
9696 SIX PINES DR., SUITE 8210
THE WOODLANDS, TX 77380
P: 689.841.2222

WATER FEATURES
OTL
2150 S. TOWNE CENTER, SUITE 100
ANNHEIM, CA 92806
P: 714.637.4747

IRRIGATION
WC3 DESIGN
114 HOBBSMAN MANOR BLVD.
ROCKESBROOK, PA 14135
P: 844.231.7042

PSW Job Number:
993A



AWSOM
Bentonville, AR

Issue Date:
02.24.2023

| REVISIONS | | |
|-----------|------------|-------------|
| NUMBER | DATE | DESCRIPTION |
| 1 | 03.13.2023 | ADDENDUM 1 |
| 2 | 06.09.2023 | ADDENDUM 2 |
| 3 | 04.28.2024 | PRO-03 |

Contents:
INTERIOR GLAZING SYSTEM ELEVATIONS - STOREFRONT - L2, L3