

SECURITY SYMBOLS

ABBREVIATIONS

AC ALTERNATING CURRENT
ACP ACCESS CONTROL PANEL
ADA AMERICANS WITH DISABILITIES ACT
AFF ABOVE FINISHED FLOOR
AFG ABOVE FINISHED GRADE
AWG AMERICAN WIRE GAUGE
BAS BUILDING AUTOMATION SYSTEM
BFC BELOW FINISHED CEILING
BR BIOMETRIC READER
CMP COMMUNICATIONS PLENUM JACKET
CMR COMMUNICATIONS RISER DEMO DEMOLITION
DC DIRECT CURRENT
DVR DIGITAL VIDEO RECORDER
EC ELECTRICAL CONTRACTOR
(ETR) EXISTING TO REMAIN
FC FLEXIBLE CONDUIT
GC GENERAL CONTRACTOR
IP INTERNET PROTOCOL
ISP INSIDE PLANT CABLE
KVM KEYBOARD VIDEO MOUSE SWITCH
LAN LOCAL AREA NETWORK
LED LIGHT-EMITTING DIODE
LF LINEAR FEET
MDF MAIN DISTRIBUTION FRAME
MFR MANUFACTURER
MNT MOUNT
N/A NOT APPLICABLE
NVR NETWORK VIDEO RECORDER
OC ON CENTER
OSP OUTSIDE PLANT
POE POWER OVER ETHERNET
QTY QUANTITY
(R) RELOCATED EXISTING DEVICE
(RE) REMOVE EXISTING DEVICE AND INSTALL AT ANOTHER LOCATION. SEE (R)
RMC RIGID METAL CONDUIT
RU RACK UNIT
SF SQUARE FEET
TGB TELECOMMUNICATIONS GROUND BUS BAR
TMGB TELECOMMUNICATIONS MAIN GROUND BUS BAR
TR TELECOMMUNICATIONS ROOM
TYP TYPICAL
UNO UNLESS NOTED OTHERWISE
UPS UNINTERRUPTIBLE POWER SUPPLY
V VOLTS
VMS VIDEO MANAGEMENT SYSTEM

SECURITY SYMBOLS

(CR) PROXIMITY CARD READER
(DM) DOOR POSITION SWITCH ONLY SEE ARCHITECTURAL DOOR HARDWARE SCHEDULE
(EL) ELECTRIFIED LOCKING DEVICE, REQUEST TO EXIT, DOOR POSITION SWITCH, AND LATCH BOLT MONITOR SEE ARCHITECTURAL DOOR HARDWARE SCHEDULE
(IC) INTERCOM
(KP) KEYPAD - INTRUSION DETECTION SYSTEM
(MD) MOTION DETECTOR
(PB) PANIC/DURESS BUTTON
(RO) REMOTE UNLOCK/OPEN BUTTON

SECURITY CAMERA SENSOR SYMBOLS

(S) SINGLE SENSOR (C) CORRIDOR CAMERA
(180°) 180° (P) PAN, TILT, ZOOM
(270° / 360°) 270° / 360° (A) AXIS FA SENSOR MAIN UNIT

SECURITY CAMERA MOUNTING TYPE SYMBOLS (APPLIES TO ANY SECURITY DEVICE SYMBOL)

(C) CEILING MOUNT
(W) WALL MOUNT
(P) POLE / BOLLARD MOUNT
(C) CORNER MOUNT
(P) PENDANT MOUNT
(W) WALL MOUNT PENDANT ARM

ANNOTATION

(S) SECURITY PLAN CALLOUT
(C) CONNECTION POINT OF NEW WORK TO EXISTING
(1, 11) DETAIL REFERENCE UPPER NUMBER INDICATES DETAIL NUMBER. LOWER NUMBER INDICATES SHEET NUMBER
(TV) SECTION CUT DESIGNATION
(E) DEDICATED EQUIPMENT ACCESS TILE
(A) ACCESS PANEL

LINETYPE LEGEND

DIRECT WIRE CONNECTION GROUPED FUNCTIONALITY

HATCHING LEGEND

HEADEND ROOM
NOT IN SCOPE (NIS)

LABELING SCHEME

SECURITY DEVICES (TYPICAL)

(A) XX XX: MODIFIER FOR SPECIAL OPERATION IF APPLICABLE

SEE MATCHING SCHEDULES ON THIS SHEET (IF APPLICABLE)

SECURITY CAMERAS (TYPICAL)

(A) AA AA: CAMERA TYPE
(180° AFF / AFG) FOR WALL MOUNTED CAMERAS, NON-TYPICAL HEIGHT ABOVE FINISHED FLOOR OR FINISHED GRADE

SEE MATCHING SCHEDULES ON THIS SHEET (IF APPLICABLE)

GENERAL NOTES

- CONTRACTOR SHALL SUPPORT ALL CABLE WITH APPROVED PATHWAY.
- ALL CABLES SHALL BE ROUTED PARALLEL AND PERPENDICULAR TO THE BUILDING STRUCTURE, UNLESS OTHERWISE NOTED.
- DOOR HARDWARE AND OPENING CONDITIONS SHALL BE EVALUATED PRIOR TO CONDUIT AND CABLING INSTALLATION AND COORDINATED WITH DIVISION 08.
- PROVIDE CONDUIT SLEEVE WITH NYLON BUSHINGS FOR NON-RATED WALL PENETRATIONS FOR COMMUNICATIONS CABLES. PATHWAYS SHALL BE SIZED FOR NO MORE THAN FORTY (40) PERCENT FILL.
- PROVIDE CONDUIT SLEEVE WITH NYLON BUSHINGS FOR CEILINGS WHICH OBSTRUCT ACCESS FOR MOVE/ADD/CHANGES TO CABLE PATHWAY SUCH AS HARD GYPSUM CEILING. PATHWAYS SHALL BE SIZED FOR NO MORE THAN FORTY (40) PERCENT FILL.
- PROVIDE UL LISTED FIRESTOP ASSEMBLY AT FIRE WALL PENETRATIONS FOR COMMUNICATIONS CABLES. MATERIAL AND INSTALLATION SHALL MAINTAIN THE RATED CAPACITY OF WALL AND MEET ALL APPLICABLE CODES.
- CONTRACTOR SHALL COORDINATE ALL COMMUNICATIONS AND CABLING PATHWAYS WITH OTHER DIVISIONS PRIOR TO INSTALLATION OF THEIR WORK.
- FULLY COORDINATE ALL CONDUIT ROUTING WITH STRUCTURAL ELEMENTS. COORDINATE CONDUIT INSTALLATIONS WITH ARCHITECT, STRUCTURAL ENGINEER, STRUCTURAL CONTRACTOR, AND GENERAL CONTRACTOR PRIOR TO INSTALLATION. ROUTING IN OR UNDER A SLAB IN CONTACT WITH GRADE REQUIRES THE USE OF CABLE RATED FOR A WET ENVIRONMENT.
- VERIFY ALL CAMERA LOCATIONS PRIOR TO ROUGH-IN. FIELD OF VIEW SHALL NOT BE OBSTRUCTED BY OTHER ELEMENTS INCLUDING, BUT NOT LIMITED TO, EXIT SIGNS, LIGHT FIXTURES, MILLWORK, SPRINKLERS, CURTAINS, AND SIGNAGE.
- ALL WIRING SHALL BE INSTALLED COMPLETE AND UNSPLICED FROM THE SERVING EQUIPMENT PANEL TO DEVICE.
- REFER TO TNO.1 FOR TECHNOLOGY GENERAL NOTES WHICH ADDRESS SECURITY COMPONENTS.

CAMERA TYPE SCHEDULE

| TYPE | FORM FACTOR | DESCRIPTION | BACK BOX | CABLE | MOUNTING HEIGHT UNO | MODEL | COMMENTS |
|------|-------------|--|--------------|-------|---------------------|------------------------------------|---|
| 01 | (S) | SURFACE MOUNT SOME CAMERA | REFER TO MFR | A | 9' AFF / CLG | AXIS M4216-LV | |
| 02 | (C) | DISCREET ELEVATOR CEILING MOUNT CAMERA | REFER TO MFR | A | ELEVATOR CEILING | AXIS FA1105 | COORDINATE WITH ELEVATOR MANUFACTURER ON EXACT TRAVEL CABLE REQUIREMENTS |
| 03 | (P) | POLE MOUNTED MULTI-IMAGER CAMERA WITH PTZ CAMERA | REFER TO MFR | A | 12' AFG POLE | AXIS Q6100-E WITH AXIS Q6135LE PTZ | PROVIDE PENDANT MOUNT AS REQUIRED FOR POLE MOUNTED APPLICATIONS |
| 04 | (W) | SURFACE MOUNT DUAL IMAGER CAMERA | REFER TO MFR | A | 9' AFF / CLG | AXIS P4707-PLVE | |
| 05 | (C) | 360 DEGREE FISHEYE CAMERA | REFER TO MFR | A | 9' AFF / CLG | AXIS M3506-PL | |
| 06 | (S) | REMOTE SENSOR SURFACE MOUNT CAMERA | REFER TO MFR | A | 9' AFF / CLG | AXIS FA3105-L | |
| N/A | (A) | FA SENSOR CAMERA MAIN UNIT | N/A | A | 9' AFF / CLG | AXIS FA454 MAIN UNIT | WHERE SHOWN IN DATA ROOMS, MOUNT WITHIN 2' POST RACK. IN MECHANICAL, ELECTRICAL, STORAGE ROOMS MOUNT ON WALL. IN CLASSROOMS MOUNT ABOVE CEILING |

ACCESS CONTROL TYPE SCHEDULE

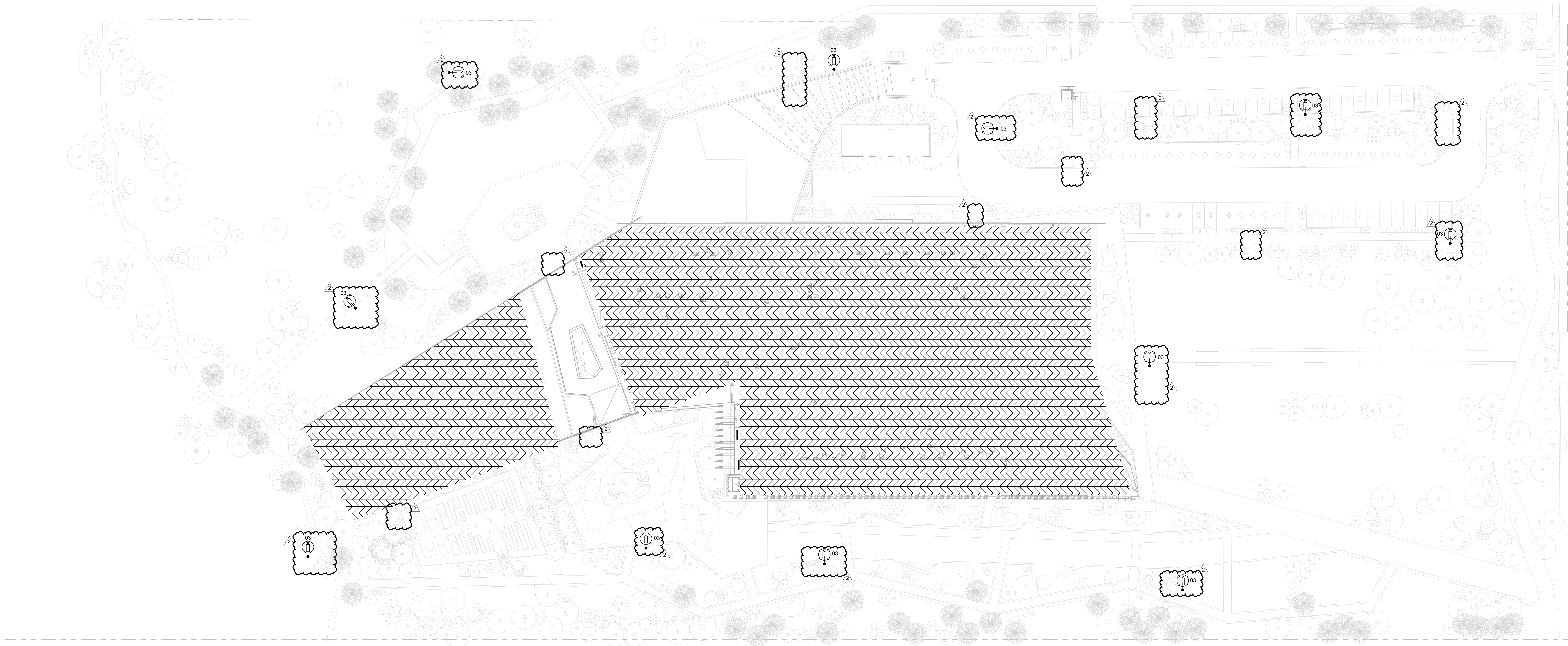
| TYPE | SYMBOL | FORM FACTOR | DESCRIPTION | BACK BOX | CONDUIT | CABLE | MOUNTING HEIGHT UNO | MODEL | COMMENTS |
|------|--------|-------------|---------------------------------------|----------------------|----------------------|-------------------------|------------------------------------|------------------------------------|--|
| 01 | (CR) | (S) | STANDARD CARD READER | 4 SQUARE W/ MUD RING | (1) 1/2" EMT | B | 46" AFF | KANTECH MULTI-TECHNOLOGY | |
| 02 | (CR) | (M) | MULLION CARD READER | N/A | (1) 1/2" FC | B | 46" AFF | KANTECH MULTI-TECHNOLOGY | |
| 03 | (CR) | (P) | PEDESTAL MOUNTED STANDARD CARD READER | N/A | (1) 1/2" EMT | B | ON PEDESTAL | KANTECH MULTI-TECHNOLOGY | |
| | (PB) | | UNDER DESK PANIC BUTTON | N/A | 1/2" ARMORED PATHWAY | C | UNDER DESK | HONEYWELL 269R | DUAL LEAF DOORS SHALL BE WIRED IN SERIES |
| | (EL) | | ELECTRIFIED LOCK | N/A | (1) 1/2" EMT | SHARED WITH CARD READER | N/A | REFER TO DIVISION 08 DOOR HARDWARE | |
| | (DM) | | DOOR MONITOR ONLY | N/A | (1) 1/2" EMT | WITHIN DOOR FRAME | REFER TO DIVISION 08 DOOR HARDWARE | | DUAL LEAF DOORS SHALL BE WIRED IN SERIES |

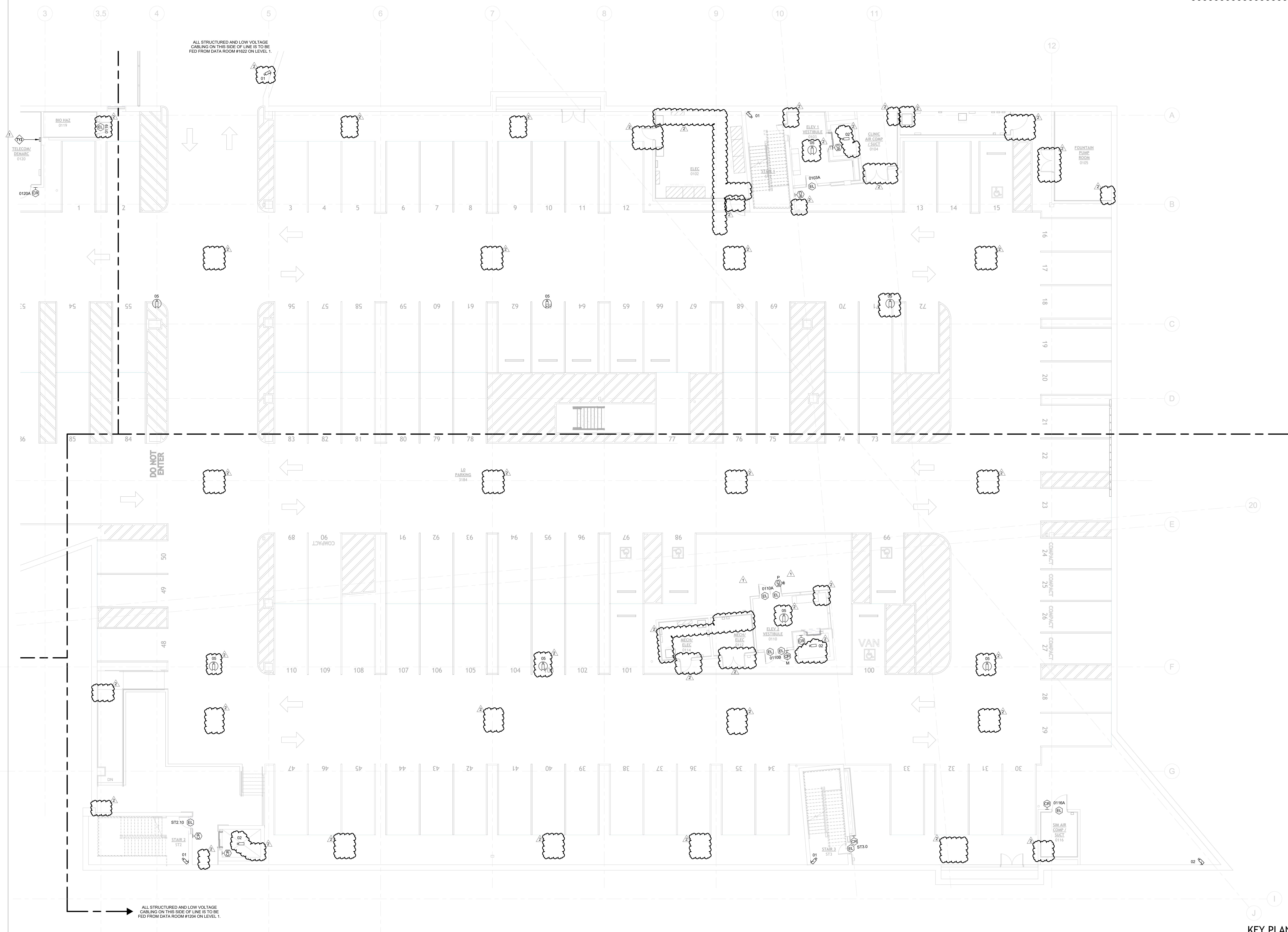
CABLE TYPES (TYP UNO)

A (1) CATEGORY 6 CABLE WHITE- COORDINATE WITH DIVISION 27
B (1) COMPOSITE CABLE WHITE
C (1) 18 AWG, 2C UNSHIELDED WHITE
D (1) 18 AWG, 4C UNSHIELDED WHITE

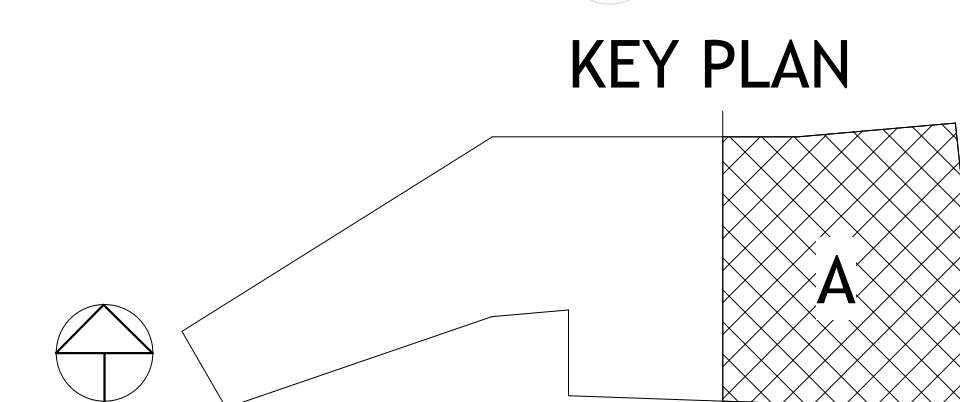
CABLE TYPES SHOWN ABOVE ARE TYPICAL FOR CABLE DISTANCES LESS THAN 500 FEET. REFER TO DEVICE MANUFACTURER'S INSTALLATION REQUIREMENTS FOR LONGER DISTANCES. COORDINATE WITH DOOR HARDWARE PROVIDER TO CONFIRM CABLING REQUIREMENTS FOR LOCK POWER.

2
REFER TO TN SERIES SITE PLAN AND DETAIL SHEETS FOR PATHWAY
REQUIREMENTS AND FIBER IN INFRASTRUCTURE FOR ALL SITE CAMERAS
LOCATIONS. SOME FIBER WILL TERMINATE IN A ELECTRICAL PEDESTAL FOR
CONVERSION TO DATA CABLING. SOME CAMERAS WILL BE CABLED
STRAIGHT TO A DATA CLOSET. REFER TO ELECTRICAL SITE PLAN FOR
EXACT LOCATION OF PEDESTAL LOCATIONS. LIGHT POLE LOCATIONS AND
NON-LIGHT POLE LOCATIONS FOR MOUNTING OF CAMERAS.



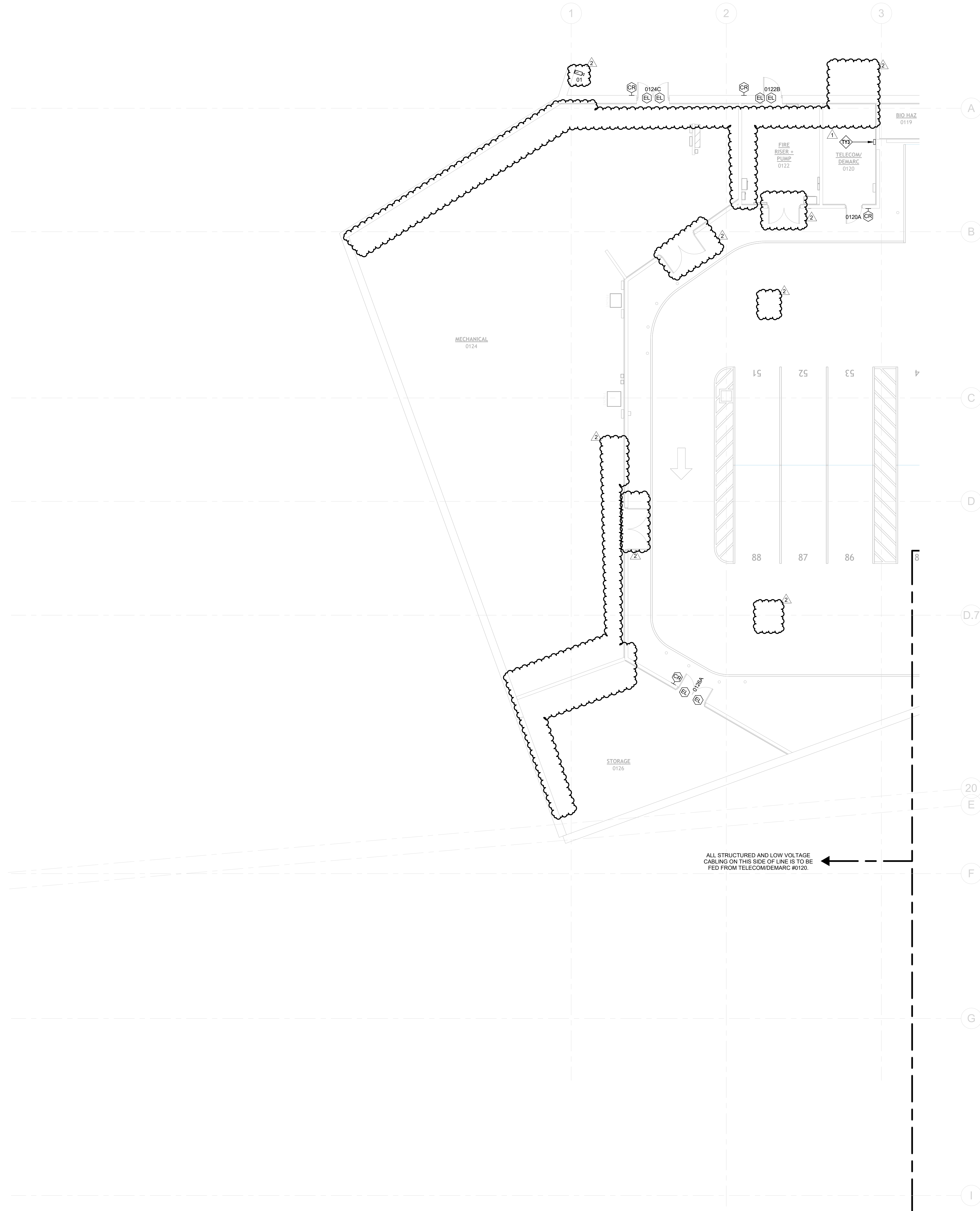


① SECURITY - LEVEL 0 PLAN - AREA A
1/8" = 1'-0"



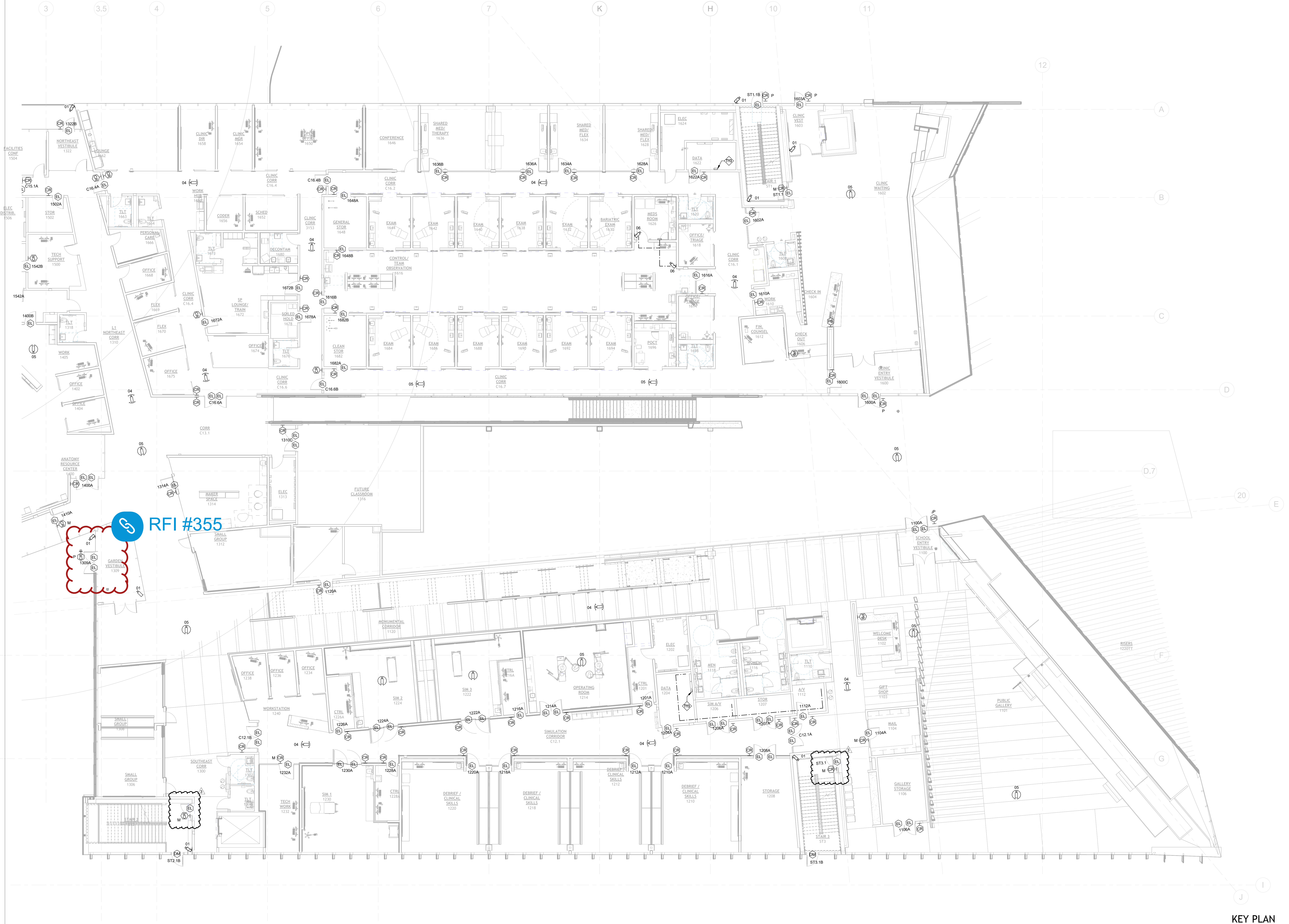
◇ SECURITY PLAN NOTES:
TY3 SECURITY PANEL CONTRACTOR TO PROVIDE EXACT
QUANTITY OF PANELS IN SHOP DRAWINGS FOR REVIEW.
REFER TO TN DRAWINGS ON EXACT LOCATION WHERE DATA
IS SHOWN.

2 REFER TO TN SERIES PLANS FOR BEARING ZONE INFORMATION.



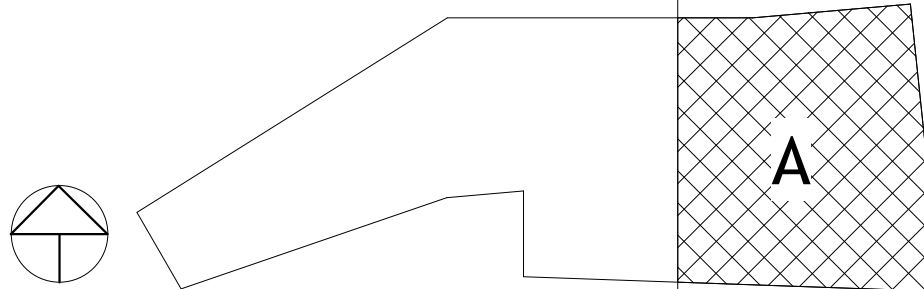
① SECURITY - LEVEL 0 PLAN - AREA B
1/8" = 1'-0"

KEY PLAN



1 SECURITY - LEVEL 1 PLAN - AREA A
1/8" = 1'-0"

KEY PLAN



SECURITY PLAN NOTES:
TY3 SECURITY PANEL CONTRACTOR TO PROVIDE EXACT QUANTITY OF PANELS IN SHOP DRAWINGS FOR REVIEW. REFER TO TN DRAWINGS ON EXACT LOCATION WHERE DATA IS SHOWN.
REFER TO TN SERIES PLANS FOR SERVING ZONE INFORMATION.

POLK STANLEY WILCOX

801 South Spring Street
Little Rock, AR 72201
501.378.0878 office
509 W. Spring St. | Suite 150
Fayetteville, AR 72701
479.444.0073 office
polkstanleywilcox.com

CIVIL
McClalland Consulting Engineers, Inc.
1380 E STEARNS ST
FAYETTEVILLE, AR 72703
P: 479.443.2377

LANDSCAPE
OSD
115 ST. JONES PLACE
BROOKLYN, NY 11217
P: 917.553.5586

STRUCTURAL
MartinMartin Consulting Engineers
8008 SOUTH WALTON BLVD. STE. 212
BENTONVILLE, AR 72712
P: 479.407.0946

MEFP - LOW VOLTAGE
Henderson Engineers
8340 LEXA DRIVE, STE 300
LEXA, KS 66214
P: 913.860.8197

SUSTAINABILITY
SOM
224 SOUTH MICHIGAN AVENUE
CHICAGO, IL 60604
P: 312.360.4121

SIGNAGE + WAYFINDING
TWO TWELVE
239 W. 27th ST., SUITE 802
NEW YORK, NY 10001
P: 212.254.6670

FOOD SERVICE
JMC HOSPITALITY
886 SIX PINES DR., SUITE 8210
THE WOODLANDS, TX 77380
P: 888.641.2222

WATER FEATURES
OTL
2150 S. TOWNE CENTER, SUITE 100
ANAHIM, CA 92806
P: 714.637.4747

IRRIGATION
WC3 DESIGN
11A ROBINSON MANOR BLVD.
MOCKES ROCK, PA 14136
P: 844.231.7042

PSW Job Number:

993A

Henderson Job Number:

2150002607



AWSOM
Bentonville, AR

Issue Date:
02.24.2023

| REVISIONS | | |
|-----------|----------|-------------|
| NUMBER | DATE | DESCRIPTION |
| 1 | 03/10/23 | Addendum 1 |
| 2 | 05/02/23 | Addendum 2 |
| 3 | 12/03/24 | RFI 103 |

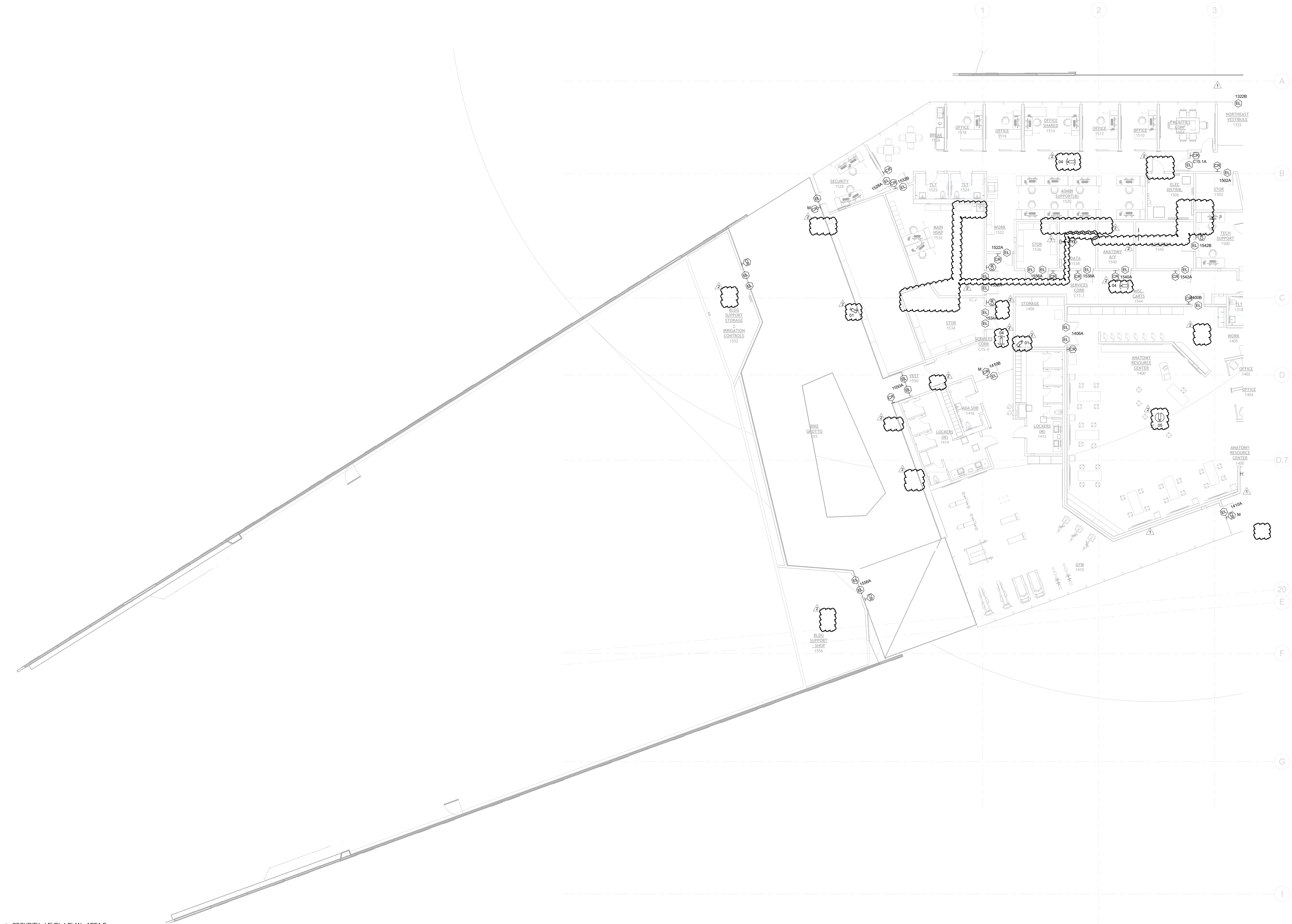
Contents:
SECURITY -
LEVEL 1 PLAN -
AREA A

THIS PAGE IS BEST
VIEWED IN COLOR

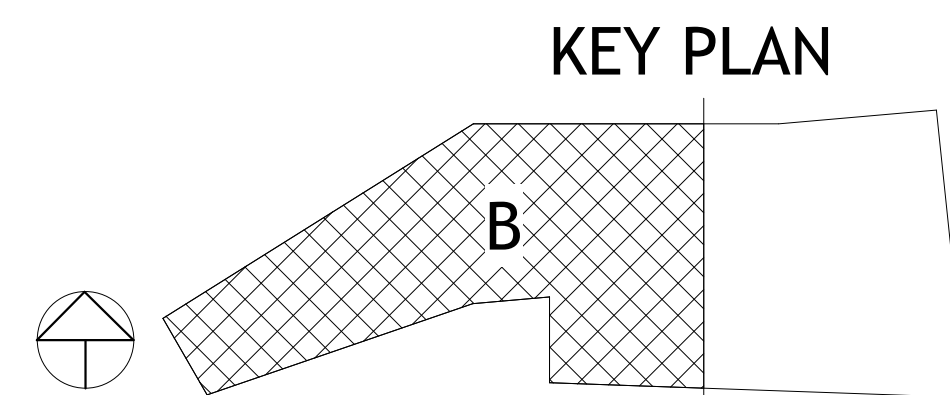
TY101A

◇ SECURITY PLAN NOTES:
TY3 SECURITY PANEL CONTRACTOR TO PROVIDE EXACT
QUANTITY OF PANELS IN SHOP DRAWINGS FOR REVIEW.
REFER TO THE DRAWINGS ON EXACT LOCATION WHERE DATA
IS SHOWN.

△ REFER TO THE SERIES PLANS FOR SERVING ZONE INFORMATION.



① SECURITY - LEVEL 1 PLAN - AREA B
1/8" = 1'-0"



SECURITY PLAN NOTES:
TY3 SECURITY PANEL CONTRACTOR TO PROVIDE EXACT
QUANTITY OF PANELS IN SHOP DRAWINGS FOR REVIEW.
REFER TO THE DRAWINGS ON EXACT LOCATION WHERE DATA
IS SHOWN.

PSW Job Number:

993A

Henderson Job Number:

2150002607



AWSOM
Bentonville, AR

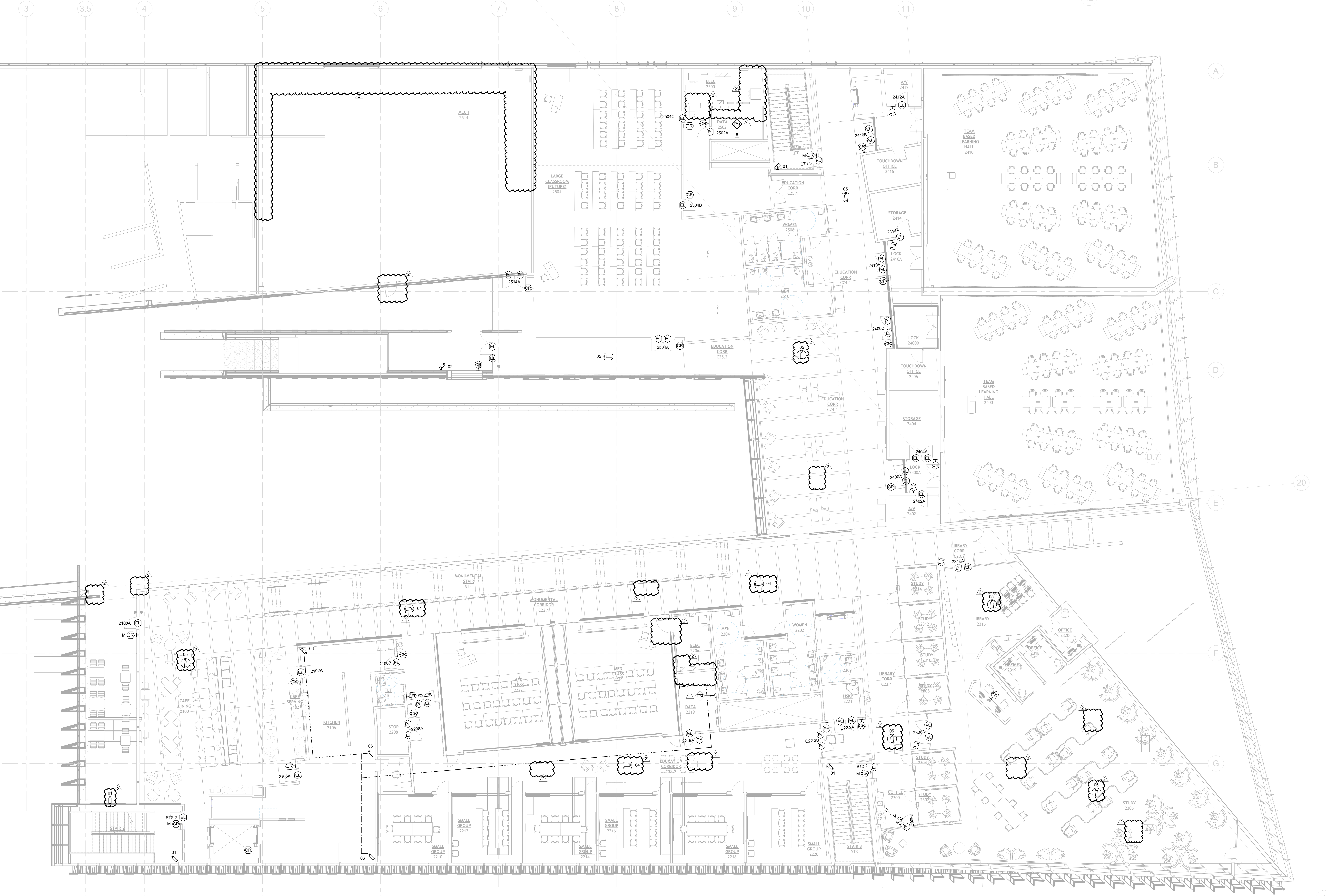
Issue Date:

02.24.2023

| REVISIONS | | |
|-----------|----------|-------------|
| NUMBER | DATE | DESCRIPTION |
| 1 | 03.10.23 | Addendum 1 |
| 2 | 06.09.23 | Addendum 2 |

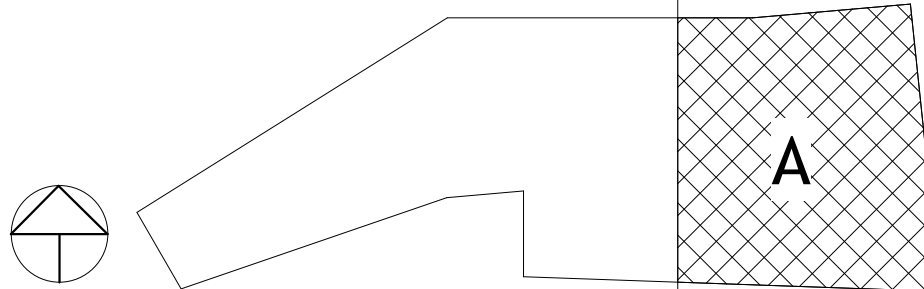
Contents:

SECURITY -
LEVEL 2 PLAN -
AREA A



SECURITY - LEVEL 2 PLAN - AREA A
1/8" = 1'-0"

KEY PLAN



SECURITY PLAN NOTES:

TY3 SECURITY PANEL. CONTRACTOR TO PROVIDE EXACT QUANTITY OF PANELS IN SHOP DRAWINGS FOR REVIEW. REFER TO TN DRAWINGS ON EXACT LOCATION WHERE DATA IS SHOWN.

REFER TO TN SERIES PLANS FOR SERVING ZONE INFORMATION.

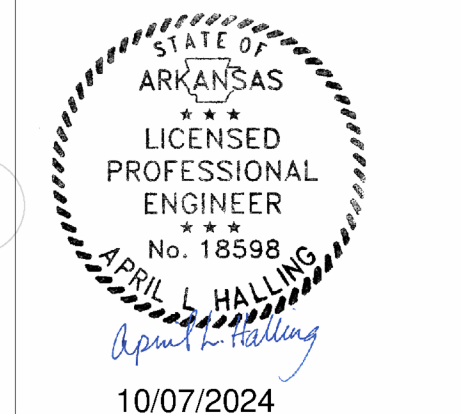
REFER TO TN SERIES PLANS FOR SERVING ZONE INFORMATION

① SECURITY - LEVEL 3 PLAN - AREA A
1/8" = 1'-0"

KEY PLAN

PSW Job Number:
993A

Henderson Job Number:
2150002607



AWSOM
Bentonville, AR

Issue Date:
02.24.2023

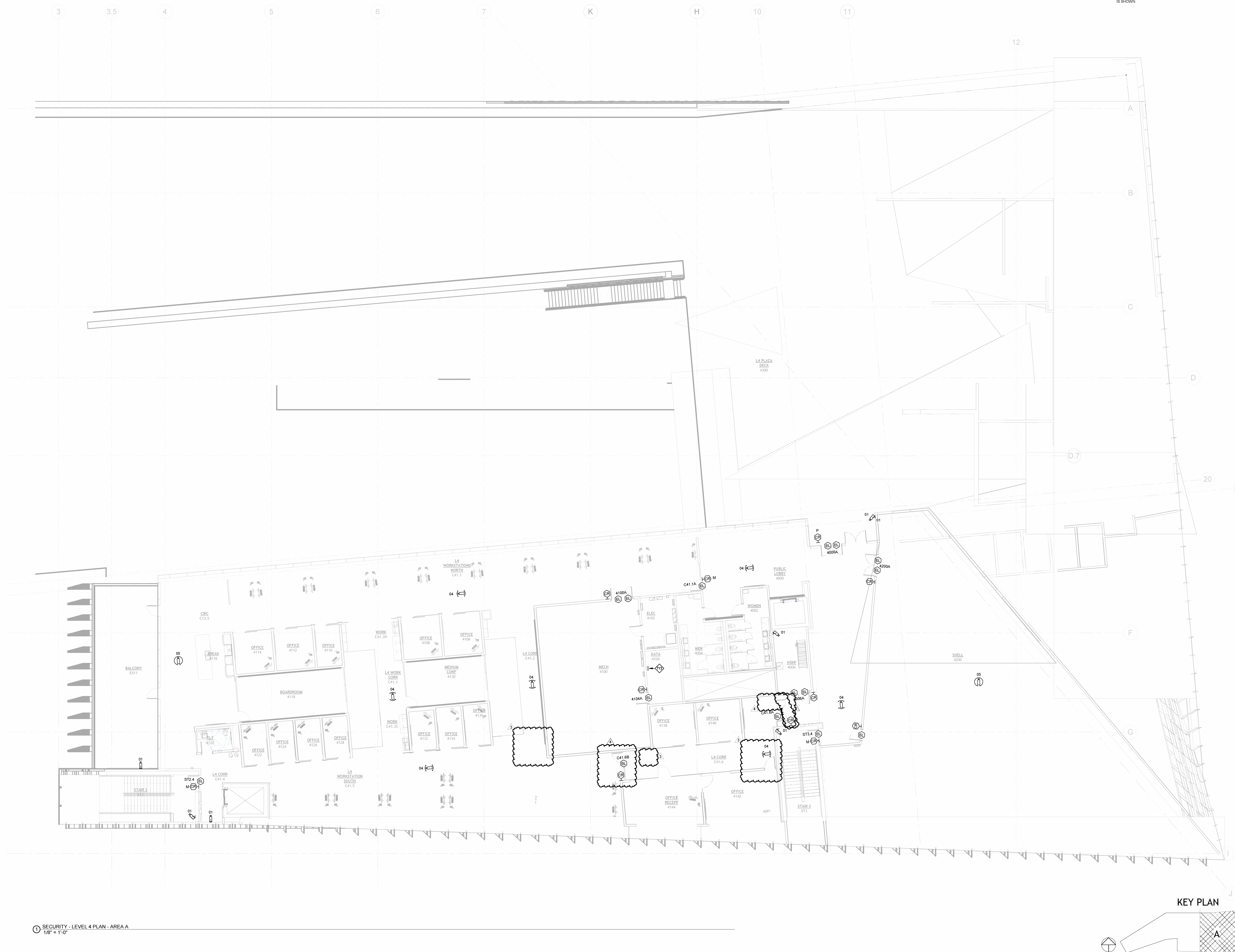
| REVISIONS | | |
|-----------|----------|-------------|
| NUMBER | DATE | DESCRIPTION |
| 1 | 03.10.23 | Addendum 1 |
| 2 | 06.09.23 | Addendum 2 |
| 3 | 08.23.24 | PR.074 |
| 4 | 10.07.24 | PR.088 |

Contents:

SECURITY -
LEVEL 4 PLAN -
AREA A

THIS PAGE IS BEST
VIEWED IN COLOR

TY104A



SECURITY PLAN NOTES:
TY4 ALL CAMERAS SHALL HAVE CATEGORY C CABLING
TERMINATED BACK TO 4TH FLOOR IDF. DATA 4104, WITH POE
INJECTORS SUPPLIED AS REQUIRED TO MEET
MULTISENSOR IPTZ VOLTAGE REQUIREMENTS. EACH POE
INJECTOR SHALL REQUIRE A 100V CONNECTION.
CONTRACTOR SHALL UTILIZE DUPLEXES IN DATA RACKS
FOR POWER REQUIREMENTS
REFER TO TN SERIES PLANS FOR SERVING ZONE INFORMATION

PSW Job Number:
993A
Henderson Job Number:
2150002607



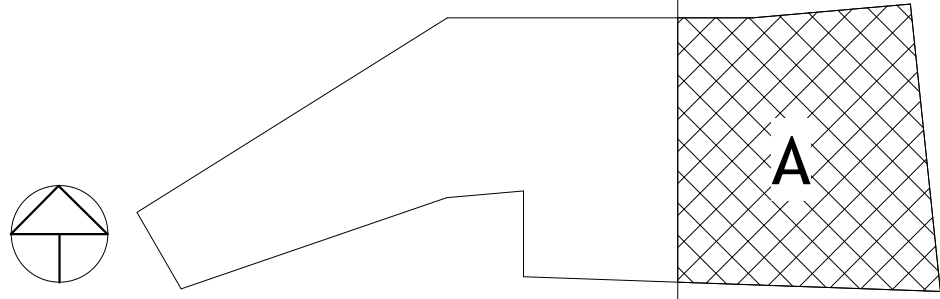
03/06/2025
AWSOM
Bentonville, AR

Issue Date:
12.12.2024

| REVISIONS | | |
|-----------|----------|-------------|
| NUMBER | DATE | DESCRIPTION |
| 1 | 01.06.25 | PROJ QR |

Contents:
**SECURITY -
LEVEL 5 PLAN -
ROOF AREA A**

KEY PLAN



THIS PAGE IS BEST
VIEWED IN COLOR
TY105A

