

- KEYED NOTES
1. MOUNT INDOOR UNIT DIRECTLY ABOVE DOOR OR DOOR HEADER. PROVIDE CONTRACTOR FIELD INSTALLED CONDENSATE PUMP, EXTEND CONDENSATE DRAIN PIPING TO NEAREST JANITOR SINK AND/OR LAVATORY TAILPIECE. TERMINATE WITH 2" AIR GAP. (TYPICAL). COORDINATE WITH PLUMBING CONTRACTOR FOR LAVATORY TAILPIECE CONNECTION.

2. EXTEND FULL SIZE EXHAUST DUCTWORK UP TO ROOF AND TERMINATE WITH FACTORY ROOF CURB/CAP.

3. INSTALL AIR CURTAIN DIRECTLY ABOVE ENTRY DOORWAYS. SEE ARCHITECTURAL DETAILS FOR MORE INFORMATION. (TYPICAL)

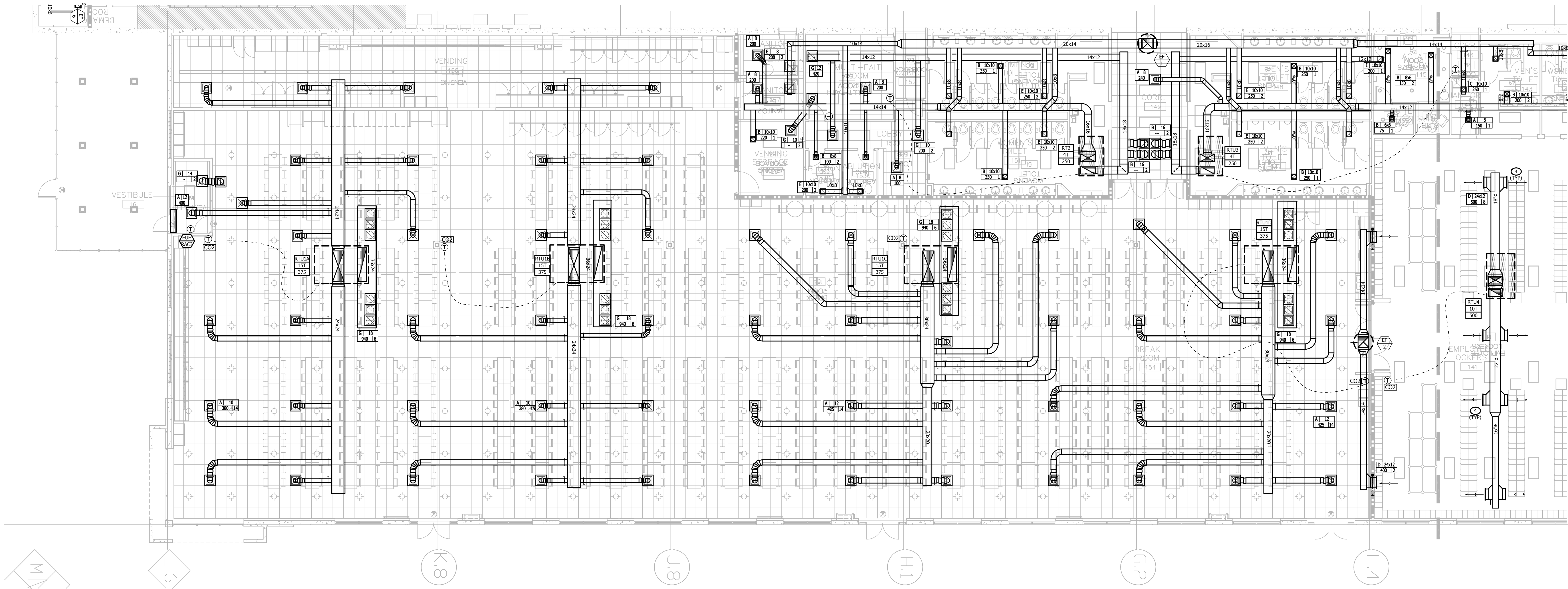
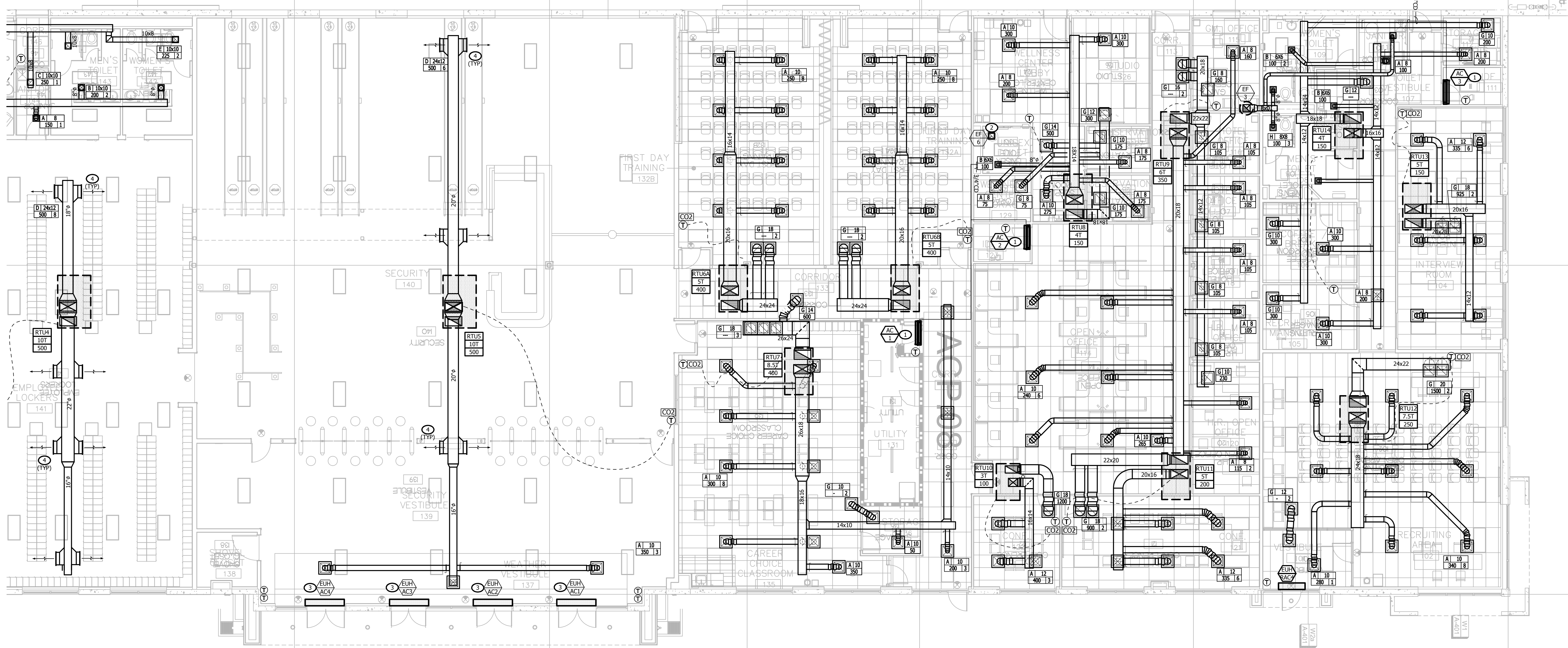
4. INSTALL DUCTWORK ELEVATION WITH THE BOTTOM OF DUCTWORK ALIGNED WITH THE LIGHTING.
- GENERAL NOTES
- A. ALL WORK SHALL COMPLY WITH ALL APPLICABLE FEDERAL, STATE AND LOCAL CODES, LAWS, ACTS, AND THE AUTHORITIES HAVING JURISDICTION.

B. THE COMPLETED INSTALLATION SHALL BE IN ACCORDANCE WITH ALL APPLICABLE INDUSTRY STANDARD OF GOOD PRACTICE AND SAFETY, AND THE MANUFACTURER'S STRICTEST RECOMMENDATIONS FOR EQUIPMENT AND PRODUCT APPLICATION AND INSTALLATION.

C. ALL WORK SHALL BE LOCATED TO PROVIDE ADEQUATE CLEARANCE FOR ARCHITECTURAL DESIGN AND PROPER OPERATION AND SERVICE OF EQUIPMENT.

D. MATERIALS EXPOSED WITHIN DUCTS OR PLENUM SHALL HAVE A FLAME-SPREAD INDEX OF NOT MORE THAN 25 AND A SMOKE DEVELOPED RATING OF NOT MORE THAN 50 WHEN TESTED IN ACCORDANCE WITH THE TEST FOR SURFACE BURNING CHARACTERISTICS OF BUILDING MATERIAL, UBC STANDARD 8-1. OTHERWISE, ALL MATERIAL SHALL BE PLENUM RATED.

E. FIRE SPRINKLERS AND LIGHTS TAKE PRECEDENCE OVER DIFFUSERS. CONTRACTOR TO VERIFY LOCATIONS WITH ARCHITECT.



ENLARGED MAIN OFFICE HVAC PLAN

0 4' 8' 16'
SCALE: 1/8" = 1'-0"

APPROVAL STAMP:

HAMILTON

DEVELOPMENT

ONE MUSIC SQUARE SOUTH,
SUITE 110
NASHVILLE, TN 37203

SMC

ARCHITECTS

SM DESIGN & CONSULTING, PC
855 Bloomfield Avenue, Suite 220
Glen Ridge, NJ 07028
Telephone 973-259-9500
www.smdpc.com

CONSULTANT

SHIRK & O'DONOVAN

CONSULTING ENGINEERS, INC.
370 EAST WILSON BRIDGE ROAD
WORTHINGTON, OH 43085
PH: 614.436.6465

MEP CONSULTANTS

KRAEMER CONSULTING ENG PLLC
2050 W. WHISPERING WIND DR. STE 158
PHOENIX, AZ 85085
PH: 602.285.1669

harrington

harrington

FIRE PROTECTION CONSULTANTS
HARRINGTON GROUP, INC.
323 SATELLITE BOULEVARD, SUITE 525
DULUTH, GA 30096
PH: 770.564.3505

TELECOMMUNICATIONS CONSULTANTS

HARGIS

HARGIS ENGINEERS, INC.
1201 THIRD AVENUE, SUITE 600
SEATTLE, WA 98101
PH: 206.448.3376

IN COORDINATION WITH DEVELOPERS
CONSULTANT WORKING IN PARALLEL:

Pickering

Pickering Firm, Inc.
Engineering
Planning - Surveying

SITE CIVIL

PICKERING FIRM, INC.
1700 KIRK RD, SUITE 120
LITTLE ROCK, AR 72223
PH: 501.246.3578

SEAL

AMERICAN

REGISTERED PROFESSIONAL ENGINEER
No. 16886
03.26.25
KCE JOB #24-240

END USER

amazon

PROJECT DESCRIPTION

AMAZON LIT3
2026 IUX GENSM
CROSS-DOCK WAREHOUSE FACILITY
(RECEIPT & REDISTRIBUTION)

PROJECT LOCATION

Port of Little Rock

PORT OF LITTLE ROCK
(INDUSTRIAL PARK)
LITTLE ROCK, ARKANSAS 72206
(UNINCORPORATED PARCELS) PULASKI COUNTY

SHEET TITLE

ENLARGED MAIN OFFICE
HVAC PLANS

SHEET MANAGEMENT

PROJECT NO.:
DATE ISSUED:
DRAWN BY:
REVIEWED BY:
ISSUANCE / REVISION SCHEDULE
DATE DESCRIPTION
02/20/2025 REVIEW SET (0.88%)
03/20/2025 100% CD - FOR PERMIT

SHEET NUMBER

M-209