

AEROJET
New Guard
Post - 2

CONSTRUCTION
DOCUMENTS

Revisions		
No.	Date	Description

Stamp

CROMWELL
ARCHITECTS/
ENGINEERS
#5
KANSAS ENGINEER

ARMK/SAS
REGISTERED
PROFESSIONAL
ENGINEER
NO. 12375
JAMIE L. GUIDRY
07-17-2024

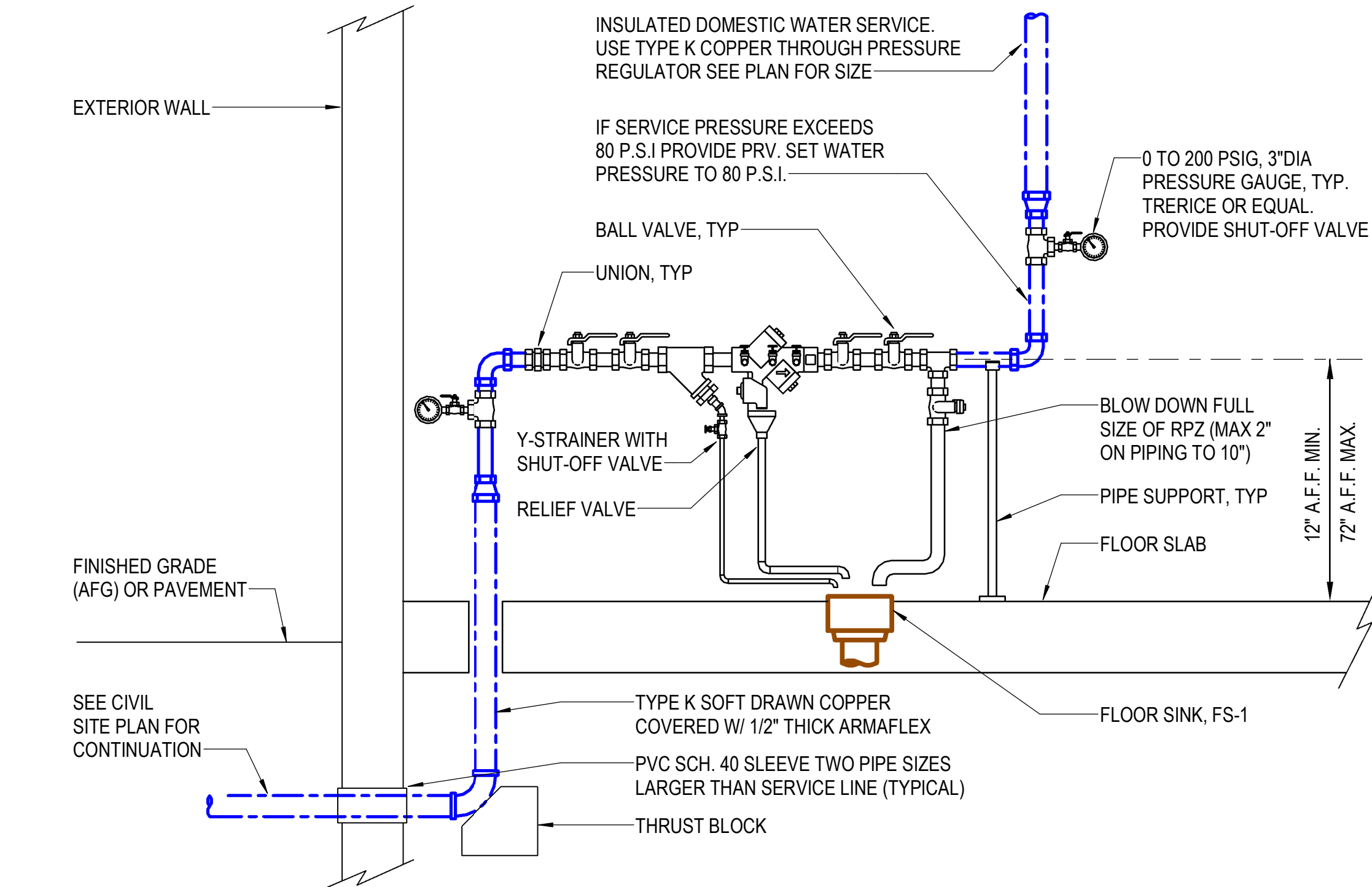
- Notes
- CROMWELL ARCHITECTS ENGINEERS, INC. ALL RIGHTS RESERVED
 - THIS SHEET DESIGNED FOR COLOR PRINTING. CRITICAL INFORMATION MAY BE LOST WITH BLACK AND WHITE PRINTING.

Project Number
Issue Date
Sheet Title

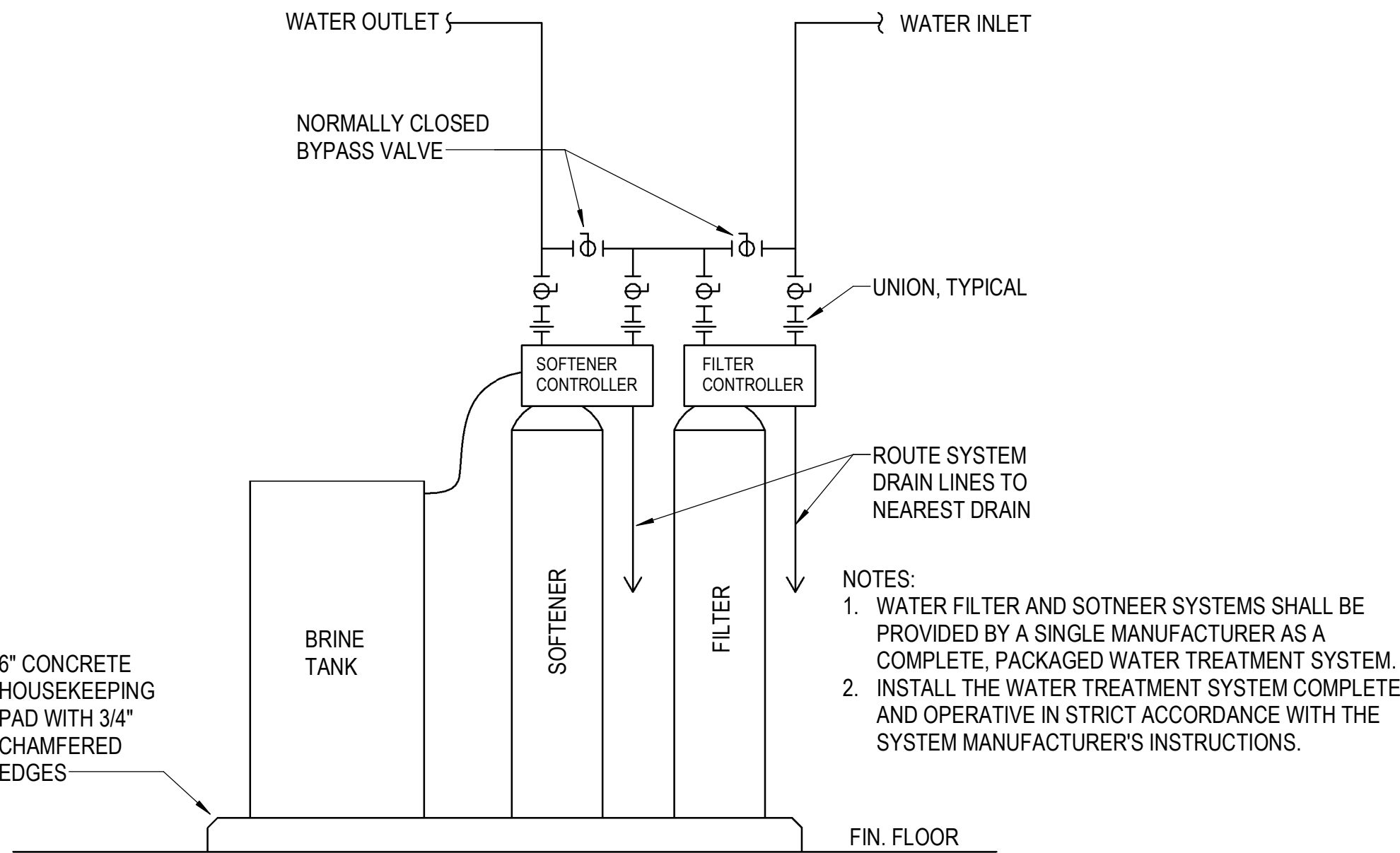
PLUMBING DETAILS &
RISER

Sheet Number

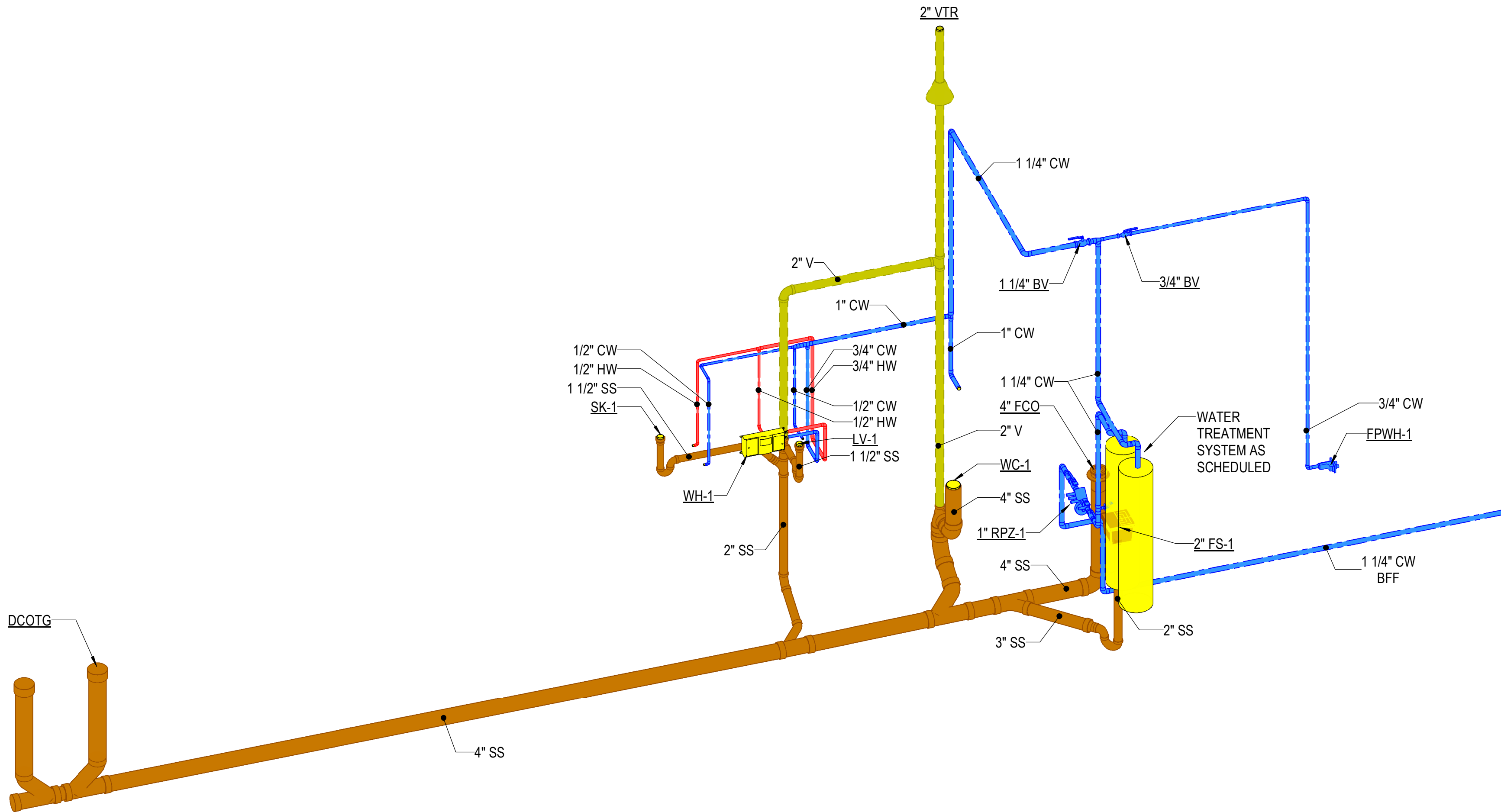
P-502



1 DOMESTIC WATER BUILDING SERVICE - RPZ-1
NOT TO SCALE



2 WATER FILTER / SOFTENER SYSTEM
NOT TO SCALE



3 OVERALL PLUMBING RISER
NOT TO SCALE