

ELECTRICAL SYMBOLS

| | |
|--|--|
| | DUPLEX RECEPTACLE OUTLET (20A, 125V, 2 POLE, 3 WIRE, GROUNDING TYPE, NEMA 5-20R) |
| | DUPLEX RECEPTACLE OUTLET (20A, 125V, 2 POLE, 3 WIRE, GROUNDING TYPE, NEMA 5-20R) MOUNT 4" ABOVE COUNTER TOP, SINK, OR BACKSPLASH (IF PRESENT) |
| | SINGLE RECEPTACLE OUTLET (20A, 125V, 2 POLE, 3 WIRE, GROUNDING TYPE, NEMA 5-20R) |
| | FLOOR RECEPTACLE OUTLET (20A, 125V, 2 POLE, 3 WIRE, GROUNDING TYPE, NEMA 5-20R) |
| | SINGLE RECEPTACLE OUTLET (50A, 250V, 3 POLE, 3 WIRE, NEMA 10-50R) |
| | SINGLE RECEPTACLE OUTLET (20A, 250V, 2 POLE, 3 WIRE, GROUNDING TYPE, NEMA 6-20R) |
| | SINGLE RECEPTACLE OUTLET (30A, 250V, 2 POLE, 3 WIRE, GROUNDING TYPE, NEMA 6-30R) |
| | SINGLE RECEPTACLE OUTLET (30A, 250V, 3 POLE, 4 WIRE, TWIST-LOCK, GROUNDING TYPE, NEMA L15-30R) |
| | SINGLE SPECIAL-PURPOSE RECEPTACLE OUTLET; NUMBER CORRESPONDS TO THE SPECIAL-PURPOSE RECEPTACLE SCHEDULE |
| | SINGLE RECEPTACLE FOR ELECTRIC RANGE (50A, 125/250V, 3 POLE, 4 WIRE, GROUNDING TYPE, NEMA 14-50R) |
| | DUPLEX RECEPTACLE MOUNTED IN CEILING (20A, 125V, 2 POLE, 3 WIRE, GROUNDING TYPE, NEMA 5-20R) |
| | TWO (2) DUPLEX RECEPTACLES MOUNTED IN DOUBLE GANG BACKBOX (20A, 125V, 2 POLE, 3 WIRE, GROUNDING TYPE, NEMA 5-20R) |
| | TWO (2) DUPLEX RECEPTACLES FLOOR MOUNTED IN DOUBLE GANG BACKBOX (20A, 125V, 2 POLE, 3 WIRE, GROUNDING TYPE, NEMA 5-20R) |

LIGHT FIXTURES (SEE FIXTURE SCHEDULE ON E-601 FOR TYPE)

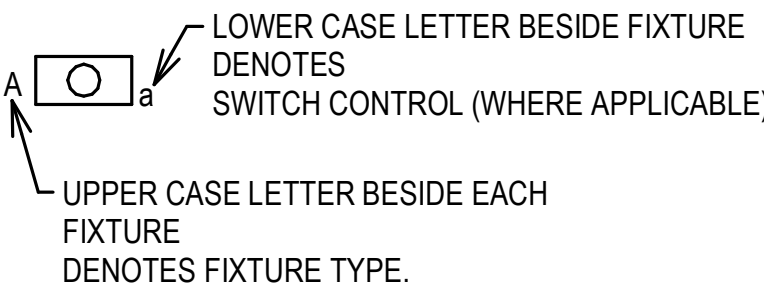
| | |
|--|---|
| | LIGHT FIXTURE, CEILING MOUNTED |
| | LIGHT FIXTURE, CEILING MOUNTED, ON EMERGENCY CIRCUIT |
| | LIGHT FIXTURE, CEILING MOUNTED, WITH EMERGENCY SELF CONTAINED BATTERY PACK. BATTERY PACK IS TO REMAIN UNSWITCHED. |
| | LIGHT FIXTURE, WALL MOUNTED |
| | LIGHT FIXTURE, INDUSTRIAL STRIP, SURFACE OR PENDANT MOUNTED |
| | LIGHT FIXTURE, INDUSTRIAL STRIP, SURFACE OR PENDANT MOUNTED, ON EMERGENCY CIRCUIT |
| | LIGHT FIXTURE, INDUSTRIAL STRIP, SURFACE OR PENDANT MOUNTED, WITH EMERGENCY SELF CONTAINED BATTERY PACK. BATTERY PACK IS TO REMAIN UNSWITCHED. |
| | LIGHT FIXTURE, CEILING MOUNTED |
| | LIGHT FIXTURE, CEILING MOUNTED, ON EMERGENCY CIRCUIT |
| | LIGHT FIXTURE, CEILING MOUNTED, WITH EMERGENCY SELF CONTAINED BATTERY PACK. BATTERY PACK IS TO REMAIN UNSWITCHED. |
| | LIGHT FIXTURE, WALL MOUNTED |
| | EMERGENCY BATTERY POWERED LIGHTING UNIT, WITH SELF CONTAINED BATTERY, CHARGER, ETC. (REFER TO FIXTURE SCHEDULE FOR BATTERY TYPE, VOLTAGE, LAMP TYPE, WATTAGE, ETC.) TRIANGLES DEPICT QUANTITY AND AIMING OF LAMP HEADS |
| | EXIT SIGN, LIGHTED, CEILING MOUNTED. SHADED AREA INDICATES FACE. ARROW DEPICTS DIRECTIONAL ARROW ON SIGN. WHEN REQUIRED BY THE FIXTURE SCHEDULE, AN EMERGENCY SELF-CONTAINED BATTERY PACK IS TO REMAIN UNSWITCHED. |
| | EXIT SIGN, LIGHTED, WALL MOUNTED AT 7'-6" AFF (TO BOTTOM OF SIGN) UNLESS INDICATED OTHERWISE. ARROW DEPICTS DIRECTIONAL ARROW ON SIGN. WHEN REQUIRED BY THE FIXTURE SCHEDULE, AN EMERGENCY SELF-CONTAINED BATTERY PACK IS TO REMAIN UNSWITCHED. |
| | FLOOD LIGHT, ARROW INDICATES DIRECTION OF BEAM |
| | DOCK LIGHT |
| | PARKING AREA LIGHT FIXTURE, POLE MOUNTED |

ELECTRICAL SYMBOLS

TELEPHONE/COMMUNICATIONS/DATA (OUTLETS SHALL BE MOUNTED 18" AFF UNLESS INDICATED OTHERWISE)

| | |
|--|--|
| | TELEPHONE OUTLET. OUTLET BOX WITH 1" C STUBBED ABOVE ACCESSIBLE CEILING SPACE AND PULL CORD. SUBSCRIPT: W - WALL MOUNTED AT 54" AFF; |
| | TELEPHONE FLOOR OUTLET. OUTLET BOX WITH 1" C STUBBED ABOVE ACCESSIBLE CEILING SPACE AND PULL CORD. |
| | DATA OUTLET. OUTLET BOX WITH 1" C STUBBED ABOVE ACCESSIBLE CEILING SPACE AND PULL CORD. |
| | DATA FLOOR OUTLET. OUTLET BOX WITH 1" C STUBBED ABOVE ACCESSIBLE CEILING SPACE AND PULL CORD. |
| | COMBINATION VOICE/DATA OUTLET. OUTLET BOX WITH 1" C STUBBED ABOVE ACCESSIBLE CEILING SPACE AND PULL CORD. |
| | COMBINATION VOICE/DATA FLOOR OUTLET. OUTLET BOX WITH 1" C STUBBED ABOVE ACCESSIBLE CEILING SPACE AND PULL CORD. |
| | 4'-0" HIGH x 3/4" THICK FIRE-RETARDANT PLYWOOD BACKBOARD. SEE PLANS FOR LENGTH. |
| | WIRELESS ACCESS POINT OUTLET CEILING MOUNTED. OUTLET BOX WITH 1" C STUBBED ABOVE ACCESS CEILING SPACE AND PULL CORD. NUMBER INDICATES QUANTITY OF DATA JACKS. ABSENCE OF A NUMBER INDICATES ONE DATA JACK. |
| | CABLE TRAY |

LIGHT FIXTURE IDENTIFICATION



SWITCHGEAR

| | |
|--|---|
| | MAGNETIC MOTOR STARTER (FURNISHED BY DIVISION 23, UNLESS NOTED OTHERWISE) |
| | ELECTRICAL PANELBOARD, FLUSH MOUNTED |
| | ELECTRICAL PANELBOARD, SURFACE MOUNTED |
| | EXISTING ELECTRICAL PANELBOARD, FLUSH MOUNTED |
| | EXISTING ELECTRICAL PANELBOARD, SURFACE MOUNTED |
| | SAFETY SWITCH; 30A CURRENT RATING UNLESS NOTED OTHERWISE. +4'-0" TO HANDLE |
| | FUSIBLE SAFETY SWITCH; CURRENT RATING AND FUSE RATING NOTED. +4'-0" TO HANDLE |
| | CIRCUIT BREAKER IN WALL MOUNTED ENCLOSURE |
| | ELECTRICAL TRANSFORMER, FLOOR MOUNTED UNLESS INDICATED OTHERWISE |

SWITCHES (MOUNTED AT 46", UNLESS INDICATED OTHERWISE) (LOWER CASE LETTER INDICATES DEVICES CONTROLLED)

| | |
|--|---|
| | SWITCH, SINGLE POLE, 20A |
| | SWITCH, DOUBLE POLE, 20A SWITCH |
| | 3-WAY, 20A SWITCH |
| | 4-WAY, 20A SWITCH |
| | KEY OPERATED |
| | SINGLE POLE SWITCH, WITH PILOT LIGHT |
| | SINGLE POLE MANUAL MOTOR STARTING SWITCH, WITH THERMAL OVERLOAD ELEMENT AND PROVISIONS FOR LOCKING OPEN |
| | SWITCH, DIMMING (COORDINATE WITH FIXTURE MANUFACTURER) |
| | SWITCH, MULLION SWITCH |
| | LOW VOLTAGE WITH MOMENTARY CONTACTS SWITCH |
| | OCCUPANCY SENSOR, WALL MOUNTED, DUAL TECHNOLOGY |
| | OCCUPANCY SENSOR, CEILING MOUNTED, DUAL TECHNOLOGY |
| | PHOTOCELL |

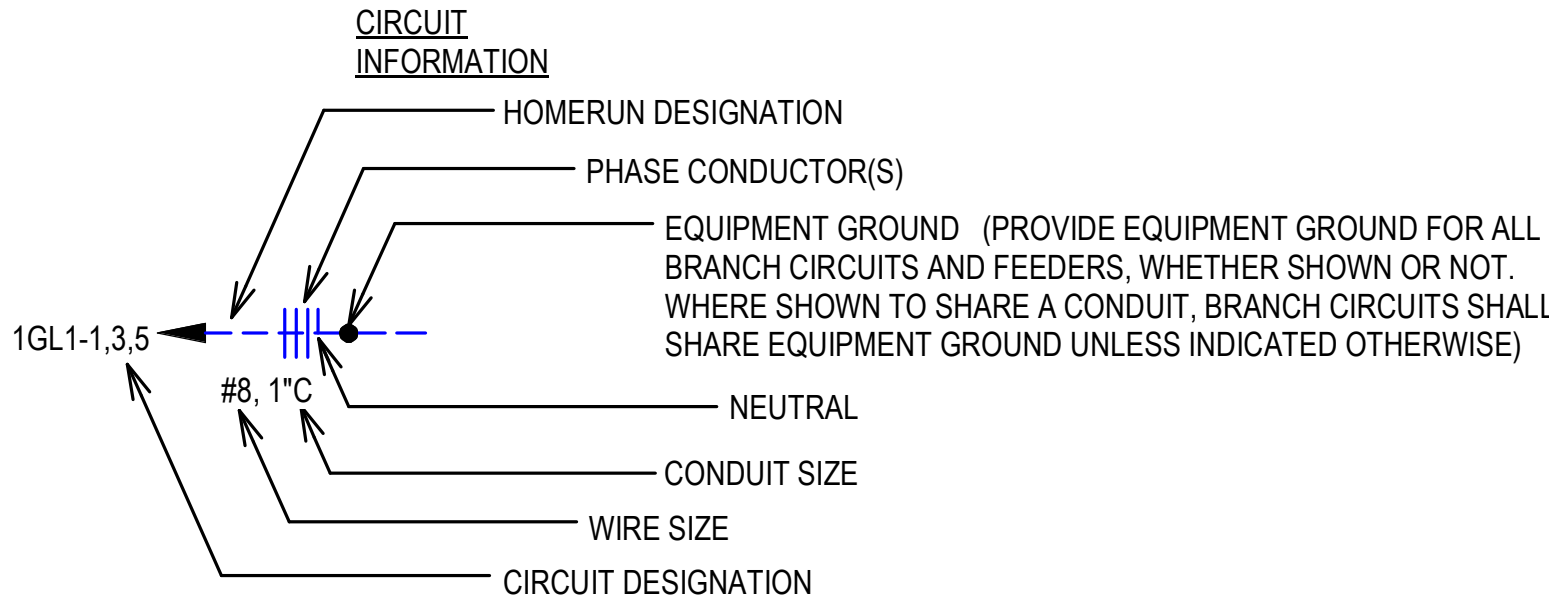
MULTIPLE DEVICES LOCATED SIDE BY SIDE (OR ABOVE AND BELOW, IF DIFFERENT ELEVATIONS ARE SHOWN) AT THE LOCATION INDICATED)

ELECTRICAL SYMBOLS

WALL MOUNTED VISUAL DEVICES TO BE LOCATED SUCH THAT THE ENTIRE LENS OF THE STROBE IS BETWEEN 80" AND 96" AFF. ALL WALL MOUNTED NOTIFICATION DEVICES SHALL BE MOUNTED AT THE SAME HEIGHT AFF TO ACHIEVE A UNIFORM APPEARANCE OR AS DIRECTED BY THE A/E.

MISCELLANEOUS

| | |
|--|--|
| | JUNCTION BOX, WALL MOUNT AS INDICATED |
| | JUNCTION BOX, CEILING MOUNT AS INDICATED |
| | CLOCK OUTLET, WALL MOUNTED 7'-6" AFF |
| | MOTOR |
| | 10' BARE #6 COILED & EXOTHERMICALLY WELDED TO COLUMN |
| | CABLE TELEVISION OUTLET BOX MOUNTED 18" AFF WITH CONDUIT STUBBED ABOVE CEILING. PROVIDE PULL CORD. |
| | CONDUIT RUN, EXPOSED |
| | CONDUIT RUN, CONCEALED |
| | FLEXIBLE CONDUIT |



- CIRCUIT DESIGNATION INDICATES PANELBOARD AND CIRCUIT(S) TO WHICH HOMERUN IS CONNECTED.
- WIRE SIZE SHALL BE NO. 12, UNLESS INDICATED OTHERWISE.
- CONDUIT SIZE SHALL BE MINIMUM ALLOWED BY SPECIFICATIONS FOR NO. 12 SIZE WIRE, 3/4" FOR NO. 10, UNLESS INDICATED OTHERWISE.
- CIRCUIT INFORMATION PROVIDED AT THE HOMERUN SYMBOL SHALL APPLY THE ENTIRE LENGTH OF THE CIRCUIT (FROM PANELBOARD TO LAST LOAD).
- WHEN NO PHASE CONDUCTOR OR NEUTRAL IS INDICATED AT THE HOMERUN SYMBOL, PROVIDE ONE PHASE CONDUCTOR AND ONE NEUTRAL, BOTH NO. 12.
- SWITCHING CONDUCTORS, CONDUCTORS FOR NIGHT LIGHT CIRCUITS (UNSWITCHED), ETC. ARE NOT SHOWN, BUT SHALL BE PROVIDED AS NECESSARY.
- WIRE SIZE INDICATED ON THESE DOCUMENTS AS INDICATED BY "NO." OR "#" HAS THE SAME MEANING AS "AWG" (N.E.C. NOMENCLATURE). (I.E. "NO. 12" OR "# 12" MEANS "12AWG" IN N.E.C. NOMENCLATURE.)

SECURITY

| | |
|--|--|
| | MAGNETIC ALARM SWITCH |
| | DURESS ALARM SWITCH |
| | MOTION DETECTOR |
| | CAPACITIVE DETECTOR |
| | CCTV CAMERA LOCATION, CEILING MOUNTED UNLESS INDICATED OTHERWISE |
| | KEYPAD ACCESS ALARM OVERRIDE CONTROL |
| | ELECTRIC PUSH-BUTTON |
| | CARD READER |
| | ELECTRIC STRIKE |
| | REQUEST TO EXIT PUSH BUTTON |

ELECTRICAL SYMBOLS

ABBREVIATIONS:

AFF = ABOVE FINISHED FLOOR
AFL = ABOVE FINISHED LANDING
GFI = GROUND FAULT INTERRUPTER
IG = ISOLATED GROUND
UIO = UNLESS INDICATED OTHERWISE
WP = WEATHERPROOF CONSTRUCTION
OF/OI = OWNER FURNISHED / OWNER INSTALLED
CF/CI = CONTRACTOR FURNISHED / CONTRACTOR INSTALLED
TYP = TYPICAL
NIC = NOT IN CONTRACT

GENERAL SYMBOLS NOTES:

- ALL SYMBOLS MAY NOT BE USED.
- MOUNTING HEIGHTS ARE ABOVE FINISHED FLOOR OR GRADE TO THE CENTER LINE OF THE OUTLET, DEVICE, ETC. UNLESS INDICATED OTHERWISE.
- LARGE AMPACITY CIRCUIT DESIGNATION
EXAMPLE: 4 SETS OF 3#500, #250, #1/0G, 4"C
MEANS IN EACH OF FOUR 4" CONDUITS INSTALL THREE 500 kCM CONDUCTORS, ONE 250 kCM NEUTRAL AND ONE #1/0 GROUND.
- FOR CONCRETE SLAB PENETRATIONS WITH PVC, SEE DETAIL x, SHEET E-50x.

SINGLE LINE

| | |
|--|---|
| | CIRCUIT BREAKER, TRIP RATING AS INDICATED, 3 POLE OR AS INDICATED |
| | DISCONNECT SWITCH OR LOAD INTERRUPTER SWITCH, CURRENT RATING AS INDICATED, 3 POLE OR AS INDICATED |
| | SWITCH WITH GROUND FAULT INTERRUPTER |
| | F30 FRS FUSE, CURRENT RATING AND TYPE WHEN INDICATED |
| | TRANSFORMER, DESCRIPTION AS NOTED OR PER SCHEDULE |
| | CURRENT TRANSFORMER |
| | POTENTIAL TRANSFORMER |
| | PHASE SELECTOR SWITCH |
| | AMMETER |
| | VOLTMETER |
| | WATT-HOUR METER |
| | SURGE PROTECTIVE DEVICE |
| | AUTOMATIC TRANSFER SWITCH |
| | GENERATOR |

COLOR LEGEND:

| | |
|--|--------------------|
| | EXISTING TO REMAIN |
| | DEMOLISH |
| | NEW CONSTRUCTION |

LINestyle LEGEND:

| | |
|--|--------------------|
| | DEMOLISH |
| | EXISTING TO REMAIN |
| | NEW |

Project

AEROJET New Guard Post - 2

Design Phase

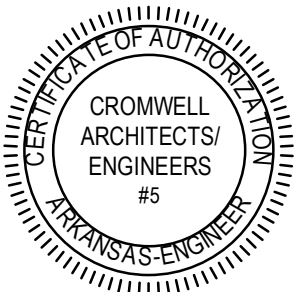
CONSTRUCTION DOCUMENTS

Revisions

No. Date Description

| | | |
|--|--|--|
| | | |
| | | |
| | | |
| | | |
| | | |
| | | |
| | | |
| | | |
| | | |
| | | |

Stamp



07-17-2024

Notes

- CROMWELL ARCHITECTS ENGINEERS, INC. ALL RIGHTS RESERVED
- THIS SHEET DESIGNED FOR COLOR PRINTING. CRITICAL INFORMATION MAY BE LOST WITH BLACK AND WHITE PRINTING.

Project Number

2024-052

Issue Date

07-17-2024

Sheet Title

ELECTRICAL LEGEND

Sheet Number

E-001

GENERAL NOTES:

- A. CONTRACTOR SHALL VERIFY THE LOCATION OF ALL EXISTING UTILITIES PRIOR TO EXCAVATION. ANY DAMAGE TO UTILITIES SHALL BE REPAIRED AT CONTRACTORS EXPENSE
- B. COORDINATE WITH EACH LOCAL UTILITY COMPANY FOR CONNECTION OF NEW LINES AND METERS. PAY COSTS IF ANY.
- C. ALL UTILITIES ROUTED UNDERGROUND MAY REQUIRE SAW CUTTING EXISTING PAVEMENTS AND ROAD. PATCH ALL PAVEMENTS AND ROAD TO MATCH EXISTING.

Project

AEROJET
New Guard
Post - 2

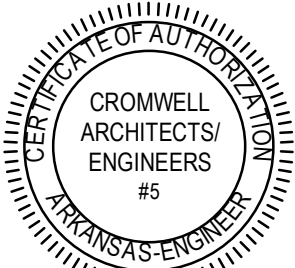
Design Phase

CONSTRUCTION
DOCUMENTS

Revisions

| No. | Date | Description |
|-----|------|-------------|
| | | |
| | | |
| | | |
| | | |
| | | |
| | | |
| | | |
| | | |
| | | |
| | | |
| | | |

Stamp



07-17-2024

Notes

1. CROMWELL ARCHITECTS ENGINEERS, INC.
ALL RIGHTS RESERVED
2. THIS SHEET DESIGNED FOR COLOR PRINTING.
CRITICAL INFORMATION MAY BE LOST WITH
BLACK AND WHITE PRINTING.

Project Number

2024-052

Issue Date

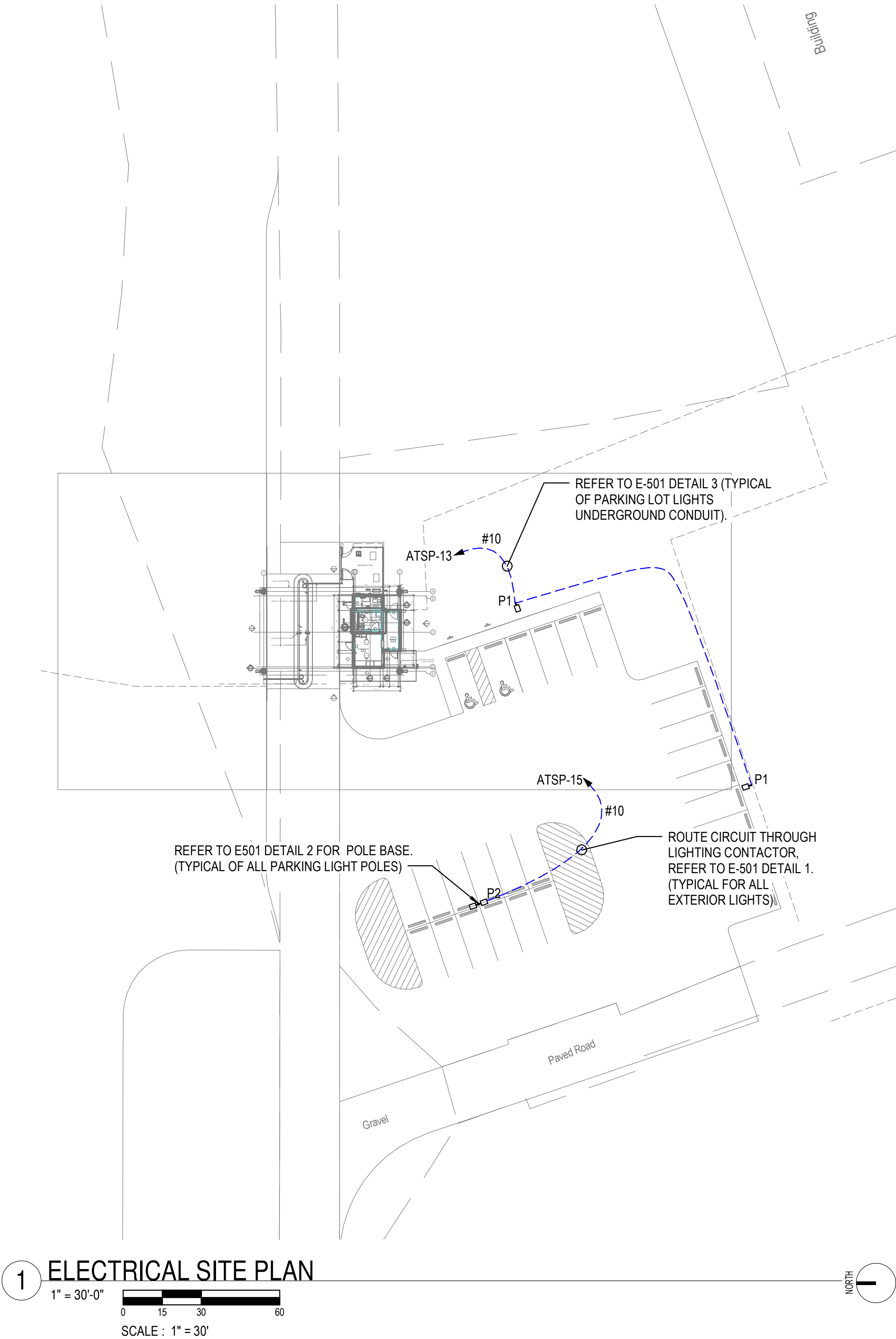
07-17-2024

Sheet Title

ELECTRICAL SITE
PLAN

Sheet Number

ES101



KEYED NOTES:

1 PROVIDE 4/0 BARE COPPER COUNTERPOISE AROUND PERIMETER OF BUILDING. LOCATE COUNTERPOISE 3'-0" MINIMUM AWAY FROM THE BUILDING PERIMETER. THE COUNTER POISE IS INSTALLED 3'-0" UNDERGROUND.

GENERAL NOTES:

- A. LIGHTNING PROTECTION DESIGN IS TO SHOW INTENT ONLY, CONTRACTOR SHALL ENGAGE A THIRD PARTY LIGHTNING PROTECTION DESIGNER / ENGINEER WHOSE SOLE PURPOSE IS DESIGNING AND CERTIFYING LIGHTNING PROTECTION SYSTEMS TO PROVIDE A COMPLETE SYSTEM WITH UL MASTER LABEL.
- B. LOCATE AIR TERMINALS AS SHOWN AND AS REQUIRED BY NFPA 780. ENSURE THAT ALL AIR TERMINALS ARE WITHIN 2'-0" OF OUTSIDE BUILDING EDGE, OUTSIDE CORNER. ENSURE AIR TERMINAL PROJECTS 10" ABOVE OBJECT PROTECTED AND THAT SPACING DOES NOT EXCEED 20'-0". AIR TERMINALS 2'-0" ABOVE OBJECT PROTECTED SHALL NOT EXCEED SPACING OF 25'-0".
- C. MAINTAIN DOWNWARD OR HORIZONTAL COURSING OF MAIN CONDUCTOR CABLE AND ENSURE THAT ALL BENDS HAVE AT LEAST AN 8" RADIUS AND DO NOT EXCEED 90 DEGREES.
- D. SUPPORT ALL EXPOSED CONDUCTOR CABLE AT 3'-0" ON CENTER MAXIMUM.
- E. BOND TO WATER SERVICE AND OTHER PIPING SYSTEMS AS REQUIRED BY CODE(S).
- F. INTERCONNECT LIGHTNING PROTECTION GROUND WITH OTHER BUILDING GROUND SYSTEMS AS REQUIRED BY CODE(S).
- G. BOND METAL BODIES ON ROOF THAT ARE OUTSIDE THE ZONE OF PROTECTION THAT ARE SUBJECT TO A DIRECT LIGHTNING STRIKE OR WHICH EXCEED THE HEIGHT OF ADJACENT AIR TERMINALS WITH MAIN SIZE CONDUCTOR CABLE. TYPICAL METAL BODIES INCLUDE BUT ARE NOT LIMITED TO: EXHAUST FANS, VENTS, HANDRAILS, AIR HANDLING UNITS, LADDERS, ANTENNAS, COOLING TOWERS, SKYLIGHTS, ETC.
- H. ACTUAL JOBSITE CONDITIONS MAY ALTER SOME AIR TERMINAL AND GROUNDING LOCATIONS.
- I. INSTALL GROUND ELECTRODES AS SHOWN AND AS REQUIRED BY CODE(S) BUT IN NO INSTANCE SHALL THEY BE LESS THAN 1'-0" BELOW GRADE AND 2'-0" FROM FOUNDATION WALL. ELECTRODES SHALL PENETRATE EARTH AT LEAST 10'-0".
- J. STRUCTURAL STEEL MAY BE USED AS A DOWN CONDUCTOR WHERE PERMITTED BY NFPA 780. MAKE ADDITIONAL CONNECTIONS AS REQUIRED BY NFPA 780.
- K. ADJUST LOCATIONS IN FIELD AS REQUIRED TO COMPLY WITH NFPA 780 BASED ON ACTUAL CONDITIONS.
- L. PROVIDE SURGE PROTECTION DEVICES MEETING THE REQUIREMENTS OF NFPA 780 FOR ALL POWER SERVICE ENTRANCES AND CONDUCTIVE COMMUNICATIONS SYSTEMS, AND ANTENNA SYSTEMS. MAKE ALL CONNECTIONS.
- M. PROTECT DOWN CONDUCTORS IN CONDUIT, ENTIRE VERTICAL ROUTING ON EXTERIOR OF BUILDING. PAINT TO MATCH ADJACENT SURFACE.
- N. REPAIR AREAS DISTURBED FOR GROUND ROD INSTALLATION TO EXISTING OR BETTER CONDITIONS AND GRADE PRIOR TO INSTALLATION. CUT CONCRETE AT EXISTING JOINTS WHERE APPLICABLE.

Project

AEROJET
New Guard
Post - 2

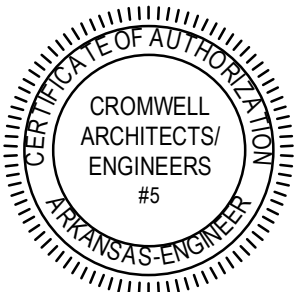
Design Phase

CONSTRUCTION
DOCUMENTS

Revisions

| No. | Date | Description |
|-----|------|-------------|
| | | |
| | | |
| | | |
| | | |
| | | |
| | | |
| | | |
| | | |
| | | |
| | | |
| | | |

Stamp



07-17-2024

Notes

1. CROMWELL ARCHITECTS ENGINEERS, INC. ALL RIGHTS RESERVED
2. THIS SHEET DESIGNED FOR COLOR PRINTING. CRITICAL INFORMATION MAY BE LOST WITH BLACK AND WHITE PRINTING.

Project Number

2024-052

Issue Date

07-17-2024

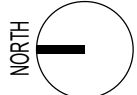
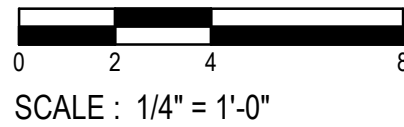
Sheet Title

LIGHTNING
PROTECTION PLAN

Sheet Number

EG101

1 LIGHTNING PROTECTION
1/4" = 1'-0"



LIGHTNING PROTECTION LEGEND:

- SURFACE MOUNTED LIGHTNING PROTECTION MAIN CONDUCTOR
- AIR TERMINAL
- - - DOWN CONDUCTOR
- ⚡ GROUND ROD

Project

AEROJET
New Guard
Post - 2

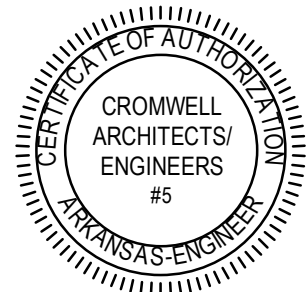
Design Phase

CONSTRUCTION
DOCUMENTS

Revisions

| No. | Date | Description |
|-----|------|-------------|
| | | |
| | | |
| | | |
| | | |
| | | |
| | | |
| | | |
| | | |
| | | |
| | | |
| | | |

Stamp



07-17-2024

Notes

1. CROMWELL ARCHITECTS ENGINEERS, INC. ALL RIGHTS RESERVED
2. THIS SHEET DESIGNED FOR COLOR PRINTING. CRITICAL INFORMATION MAY BE LOST WITH BLACK AND WHITE PRINTING.

Project Number

2024-052

Issue Date

07-17-2024

Sheet Title

LIGHTING PLAN

Sheet Number

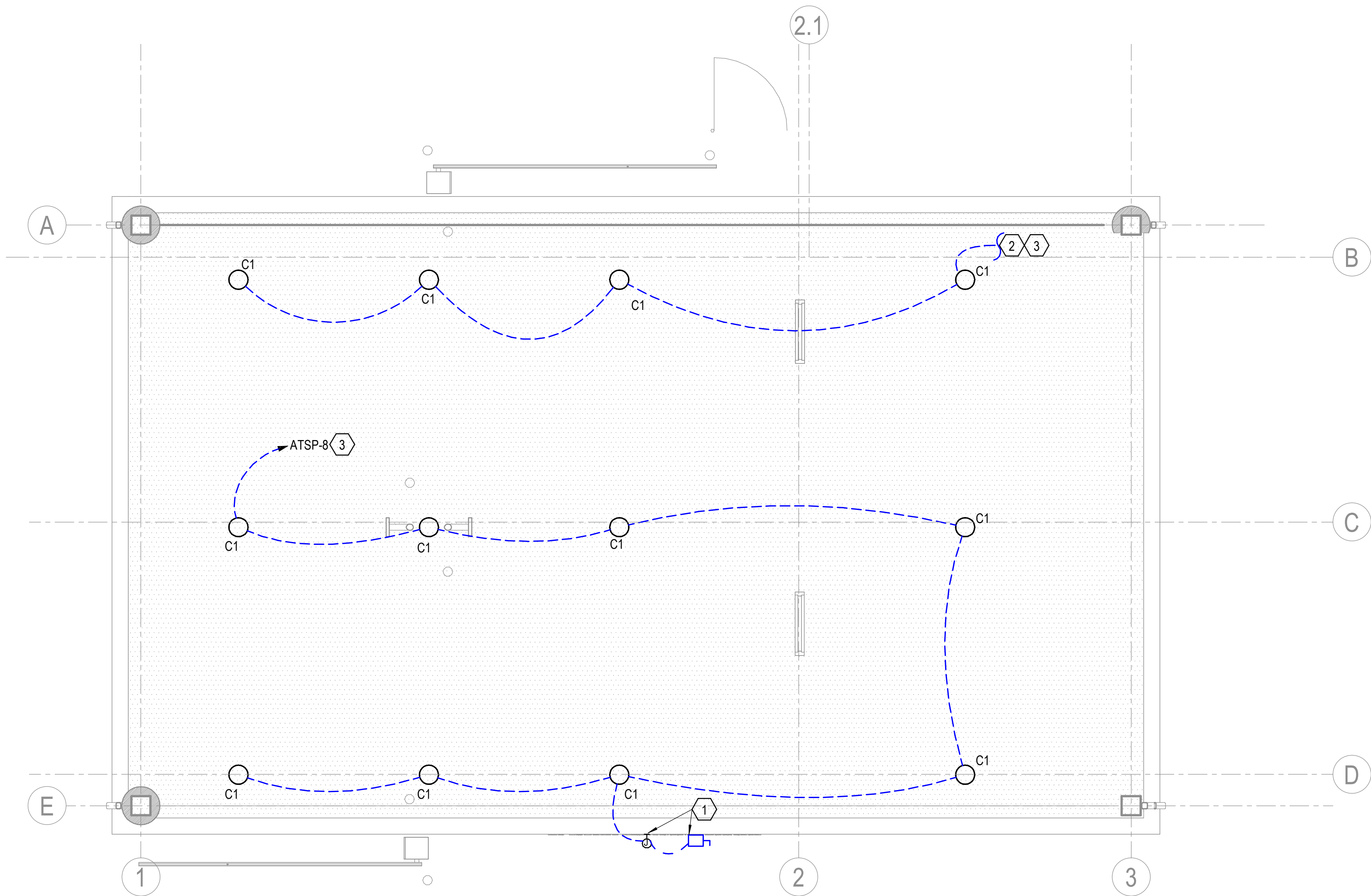
EL101

GENERAL NOTES:

- A. MOUNT TYPE VA LIGHT FIXTURE 7'-0" ABOVE FINISHED FLOOR.
- B. TYPE C1 LIGHTS SHALL BE SURFACE MOUNTED ON CANOPY.
- C. ALL EXIT LIGHTS SHALL BE POWERED FROM UNSWITCHED LIGHTING CIRCUIT INDICATED.
- D. MOUNT ALL EXIT LIGHTS 1' ABOVE DOOR JAMB.

KEYED NOTES:

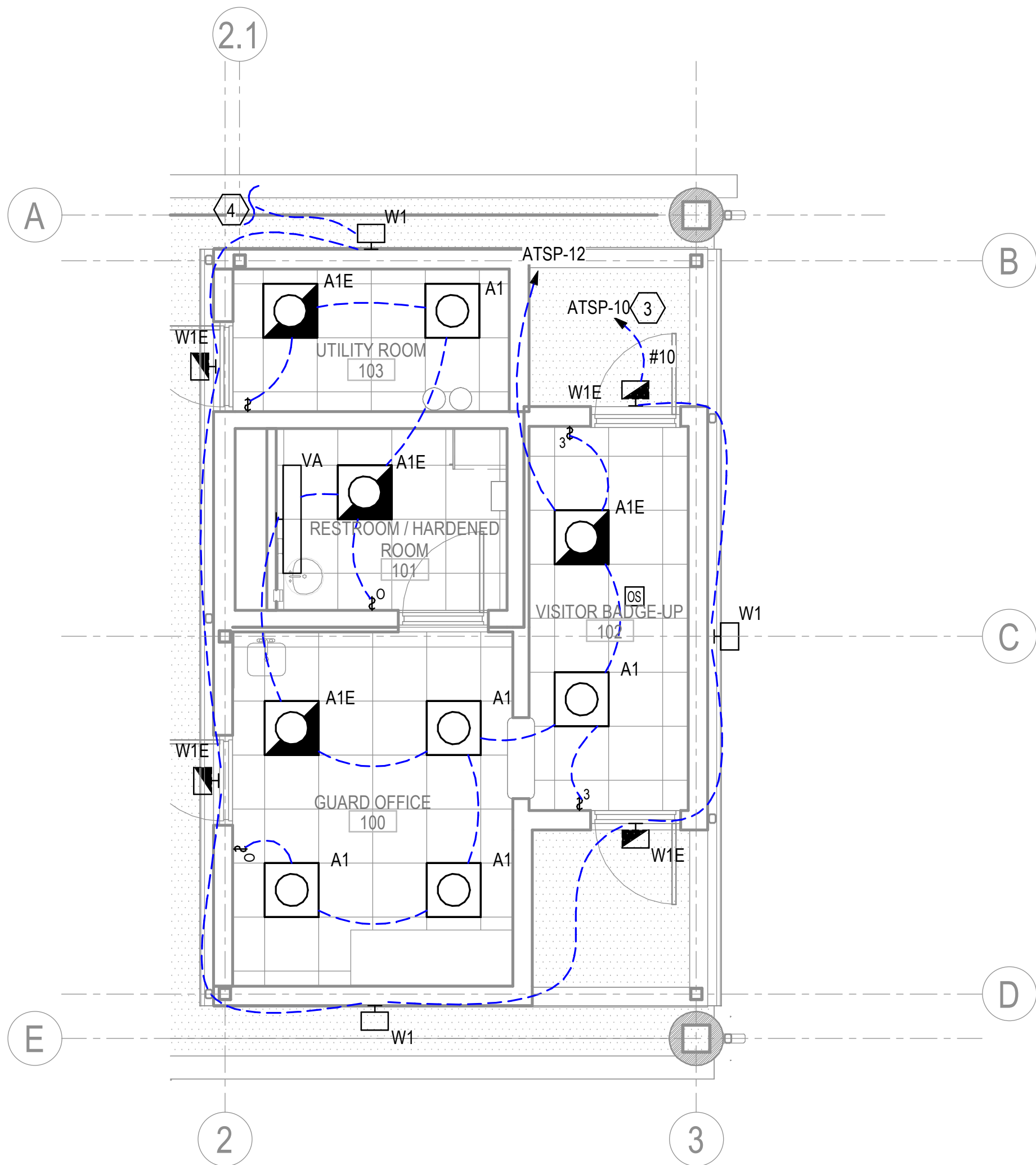
- 1 JUNCTION BOX POWERS SIGN LIGHTING, PROVIDED 30A, 240V 2POLE DISCONNECT . COORDINATE WITH INSTALLER FOR EXACT LOCATION .
- 2 PARTIAL CIRCUIT SEE DETAIL 2 FOR CONTINUATION TO LIGHTS POWERING WALL PACKS. ALL EXTERIOR LIGHTS SHALL BE ROUTED VIA LIGHTING CONTACTOR, REFER TO E501 DETAIL 1.
- 3 POWER EXTERIOR LIGHTING THROUGH LIGHTING CONTACTOR REFER TO E-501 DETAIL 1.
- 4 PARTIAL CIRCUIT REFER TO DETAIL 1 KEYNOTE 2 ON THIS SHEET FOR CONTINUATION.



1 CANOPY LIGHTING PLAN

1/4" = 1'-0"

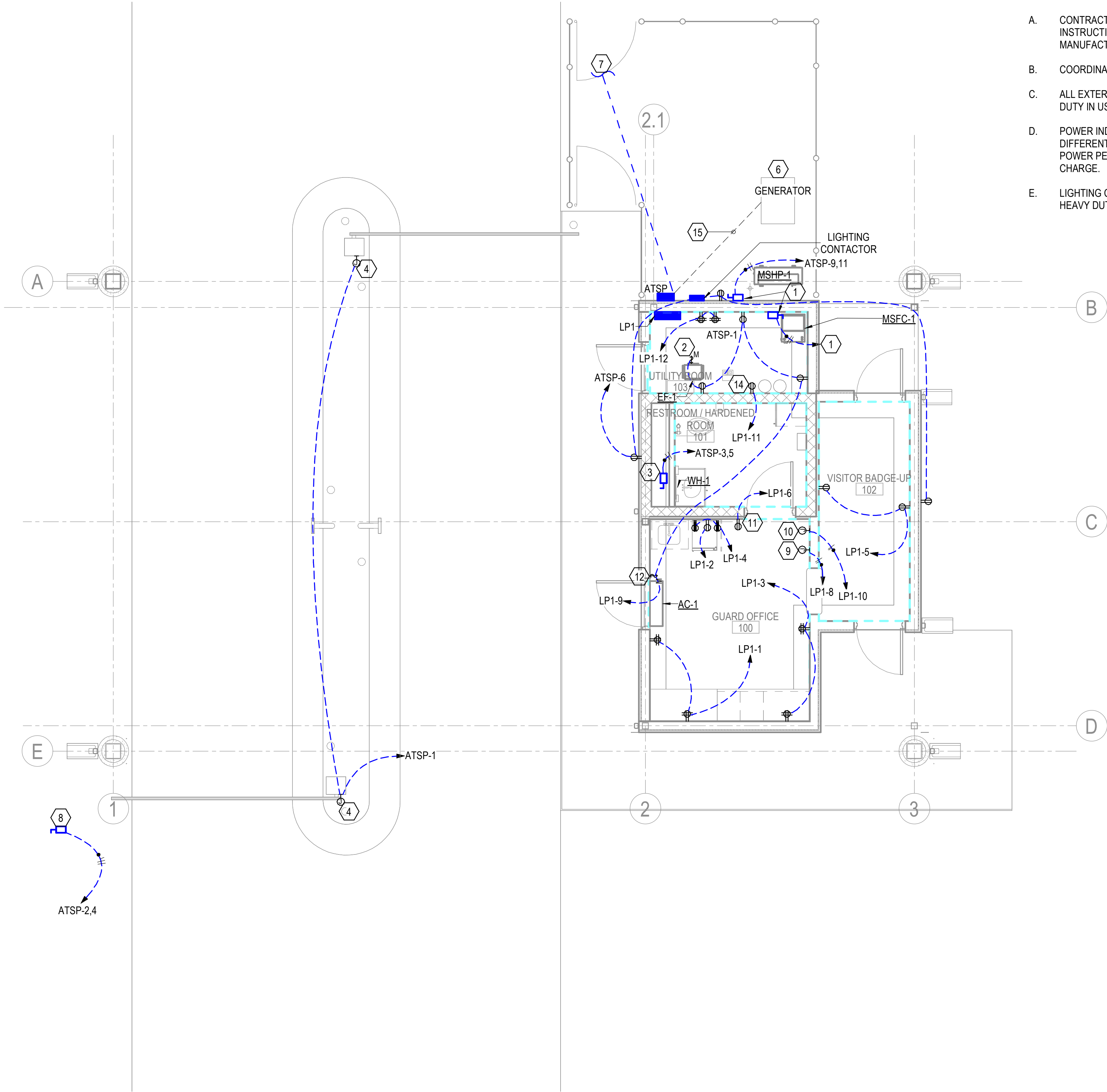
SCALE : 1/4" = 1'-0"



2 INTERIOR LIGHTING PLAN

1/4" = 1'-0"

SCALE : 1/4" = 1'-0"

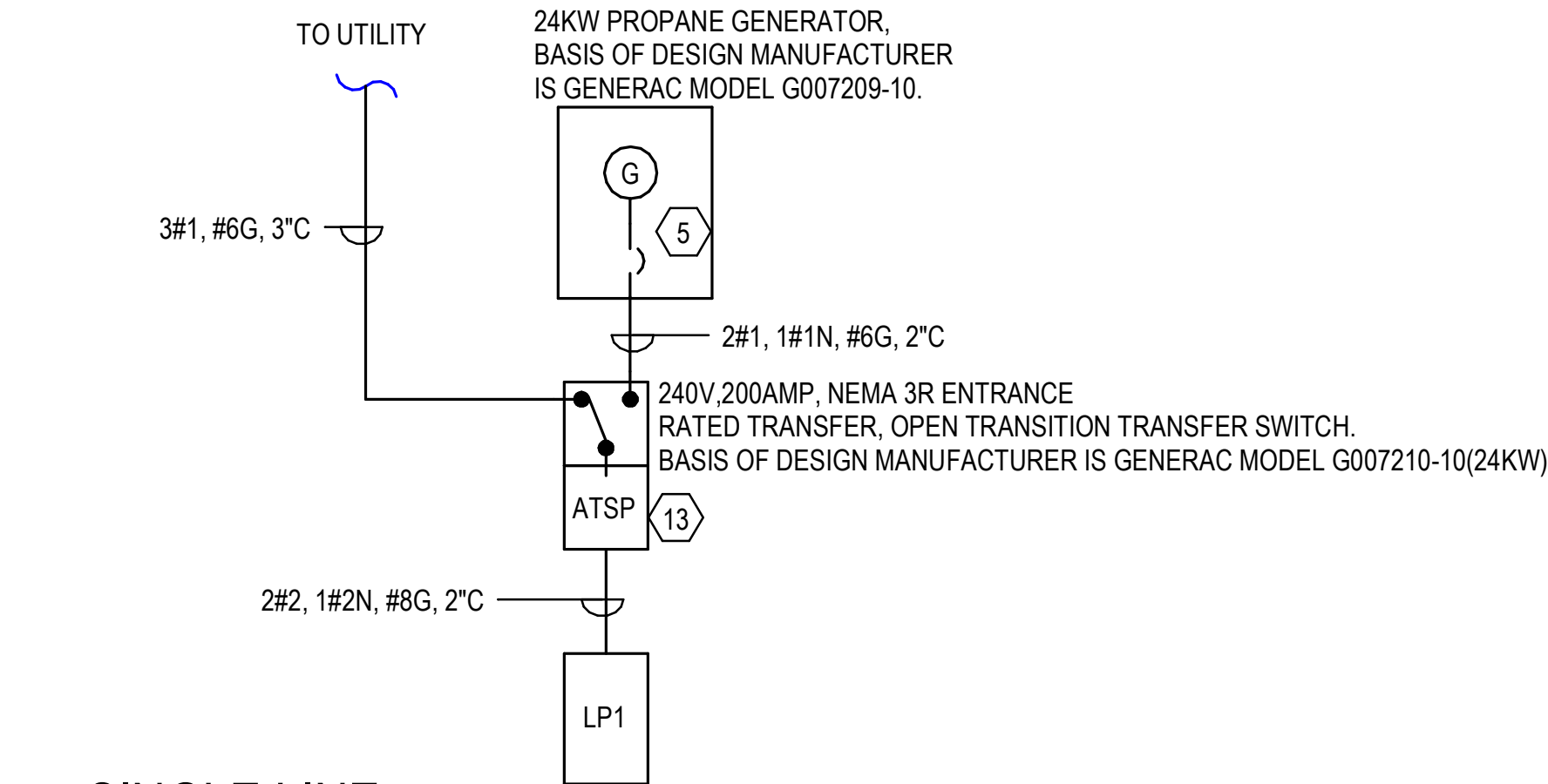


GENERAL NOTES:

- A. CONTRACTOR SHALL WIRE EQUIPMENT PER MANUFACTURER INSTRUCTIONS. ALL WIRING AND CONNECTIONS SHALL BE PER MANUFACTURERS RECOMMENDATIONS.
- B. COORDINATE ALL CONDUIT LOCATIONS WITH OTHER DISCIPLINES.
- C. ALL EXTERIOR RECEPTACLES SHALL BE GFI TYPE WITH HEAVY DUTY IN USE COVER.
- D. POWER INDICATED ON PLANS IS BASED ON BASIS OF DESIGN. IF DIFFERENT EQUIPMENT IS USED CONTRACTOR SHALL PROVIDE POWER PER MANUFACTURER'S RECOMMENDATIONS AT NO EXTRA CHARGE.
- E. LIGHTING CONTACTOR AND EXTERIOR DISCONNECTS SHALL BE IN HEAVY DUTY WEATHER PROOF COVERS.

KEYED NOTES:

- 1 DISCONNECT POWERS MECHANICAL EQUIPMENT COORDINATE EXACT LOCATION WITH INSTALLER. OUTDOOR UNIT POWERS INDOOR UNIT.
- 2 MANUAL MOTOR STARTER POWERS EF-1, COORDINATE EXACT LOCATION WITH INSTALLER.
- 3 240V,2POLE,30AMP DISCONNECT SWITCH TO POWER WATER HEATER, MOUNT DISCONNECT ABOVE CEILING. COORDINATE EXACT LOCATION OF WH-1 WITH INSTALLER, MAKE FINAL CONNECTIONS TO WATER HEATER.
- 4 JUNCTION BOX POWERS GATE, COORDINATE EXACT LOCATION WITH INSTALLER.
- 5 PROVIDE 12V, GROUP 35AGM 650CCA BATTERY, OTHER MANUFACTURER APPROVED SUBSTITUTES ARE ACCEPTABLE.
- 6 PROVIDE GENERATOR PAD APPROVED BY MANUFACTURER.
- 7 ROUTE CONDUCTORS UNDERGROUND TO UTILITY POLE, PROVIDE ALL NECESSARY ACCESSORIES REQUIRED FOR SERVICE.
- 8 240V,3POLE,30A NEMA 3R DISCONNECT POWERS SLIDING GATE, COORDINATE EXACT LOCATION WITH INSTALLER.
- 9 JUNCTION BOX POWERS CAMERA POWER SUPPLY COORDINATE LOCATION WITH INSTALLER.
- 10 JUNCTION POWERS DOOR POWER SUPPLY. COORDINATE EXACT LOCATION WITH INSTALLER.
- 11 RECEPTACLE POWERS WATER COOLER, COORDINATE EXACT LOCATION WITH INSTALLER.
- 12 JUNCTION BOX POWERS AIR CURTAIN INTEGRAL DISCONNECT. COORDINATE WITH AIR CURTAIN INSTALLER ON EXACT LOCATION.
- 13 PROVIDE SERVICE ENTRANCE RATED ATS DISTRIBUTION PANELBOARD COMBO, BASIS OF DESIGN MANUFACTURER IS GENERAC MODEL:G007228, 250V,200AMP WITH 16 BREAKER SPACE. PROVIDE COMPATIBLE BREAKERS FOR LOADS INDICATED. INSTALL SPD AT PANEL.
- 14 RECEPTACLE POWERS WATER SOFTENER, COORDINATE WITH INSTALLER ON CONNECTION TYPE REQUIRED, WHERE WATER SOFTENER REQUIRES HARD WIRING PROVIDE JUNCTION BOX IN LIEU OF RECEPTACLE.
- 15 PROVIDE UNDERGROUND POWER AND COMMUNICATIONS CONDUCTORS FROM GENERATOR TO ATS. REFER TO SINGLE LINE DIAGRAM FOR CONDUCTOR SIZING. CONDUCTORS SHALL BE BURIED 3'-0" BELOW FINISHED GRADE.



2 SINGLE LINE
N.T.S.

1 POWER PLAN
1/4" = 1'-0"
SCALE : 1/4" = 1'-0"
NORTH

Project

AEROJET
New Guard
Post - 2

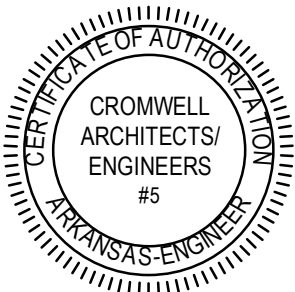
Design Phase

CONSTRUCTION
DOCUMENTS

Revisions

| No. | Date | Description |
|-----|------|-------------|
| | | |
| | | |
| | | |
| | | |
| | | |
| | | |
| | | |
| | | |
| | | |
| | | |

Stamp



07-17-2024

Notes

- 1. CROMWELL ARCHITECTS ENGINEERS, INC. ALL RIGHTS RESERVED
- 2. THIS SHEET DESIGNED FOR COLOR PRINTING. CRITICAL INFORMATION MAY BE LOST WITH BLACK AND WHITE PRINTING.

Project Number

2024-052

Issue Date

07-17-2024

Sheet Title

POWER PLAN &
SINGLE LINE DIAGRAM

Sheet Number

EP101

Project

AEROJET
New Guard
Post - 2

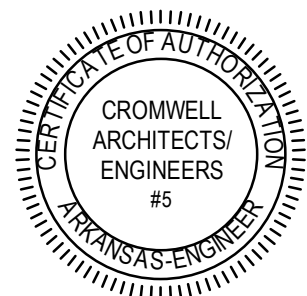
Design Phase

CONSTRUCTION
DOCUMENTS

Revisions

| No. | Date | Description |
|-----|------|-------------|
| | | |
| | | |
| | | |
| | | |
| | | |
| | | |
| | | |
| | | |
| | | |
| | | |
| | | |

Stamp



07-17-2024

Notes

1. CROMWELL ARCHITECTS ENGINEERS, INC.
ALL RIGHTS RESERVED
2. THIS SHEET DESIGNED FOR COLOR PRINTING.
CRITICAL INFORMATION MAY BE LOST WITH
BLACK AND WHITE PRINTING.

Project Number

2024-052

Issue Date

07-17-2024

Sheet Title

SYSTEMS PLAN

Sheet Number

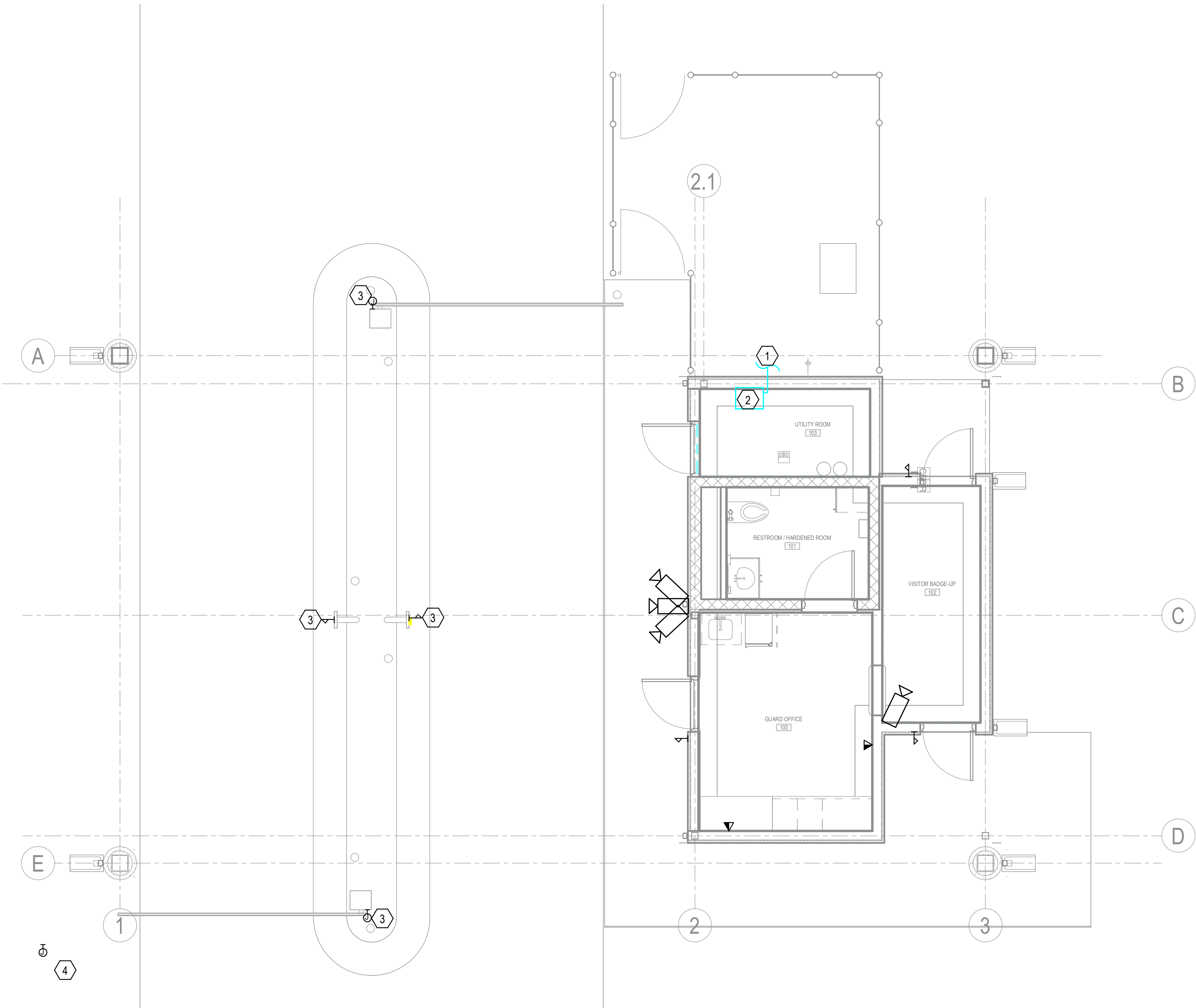
ET101

GENERAL NOTES:

- A. ALL LOW VOLTAGE CABLING SHALL BE INSTALLED IN CONDUIT. ROUTE CONDUIT TO UTILITY ROOM.
- B. ALL SECURITY CABLING SHALL BE ROUTED TO UTILITY ROOM OR AS DIRECTED BY SECURITY VENDOR.
- C. PROVIDE 24 PORT PATCH PANEL AND TERMINATE CAT 6 DATA CABLES TO THIS PATCH PANEL. LOCATE PATCH PANEL BELOW FIBER OPTIC PATCH PANEL.
- D. PROVIDE A 1500KVA RACK MOUNT UPS TO POWER EQUIPMENT LOCATED IN THE RACK.

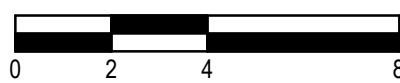
KEYED NOTES:

- 1 ROUTE UNDERGROUND CONDUIT TO FIBER LOCATION NEAR BUILDING, EXTEND FIBER TO A 24 PORT PATCH PANEL.
- 2 PROVIDE A 24 PORT FIBER AND COPPER PATCH PANEL IN A WALL MOUNTED RACK.
- 3 PROVIDE DATA COMMUNICATIONS JUNCTION BOX. PROVIDE 1" CONDUIT ROUTED TO GUARD POST BUILDING. COORDINATE EXACT LOCATION WITH SECURITY INSTALLER.
- 4 JUNCTION BOX IS FOR ROLLING GATE COMMUNICATION CABLES. ROUTE A 1.25" CONDUIT TO GATE CONTROL LOCATION. COORDINATE CONTROL LOCATION WITH OWNER.

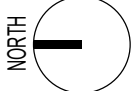


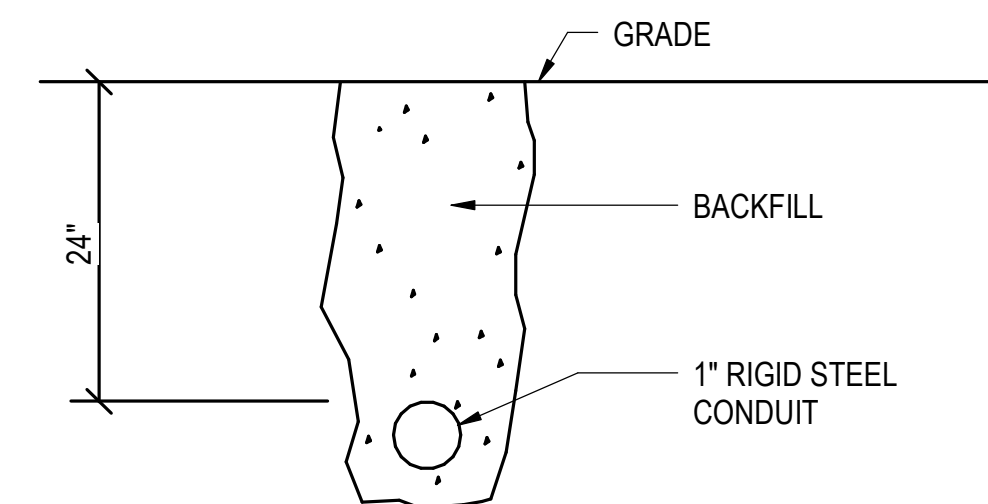
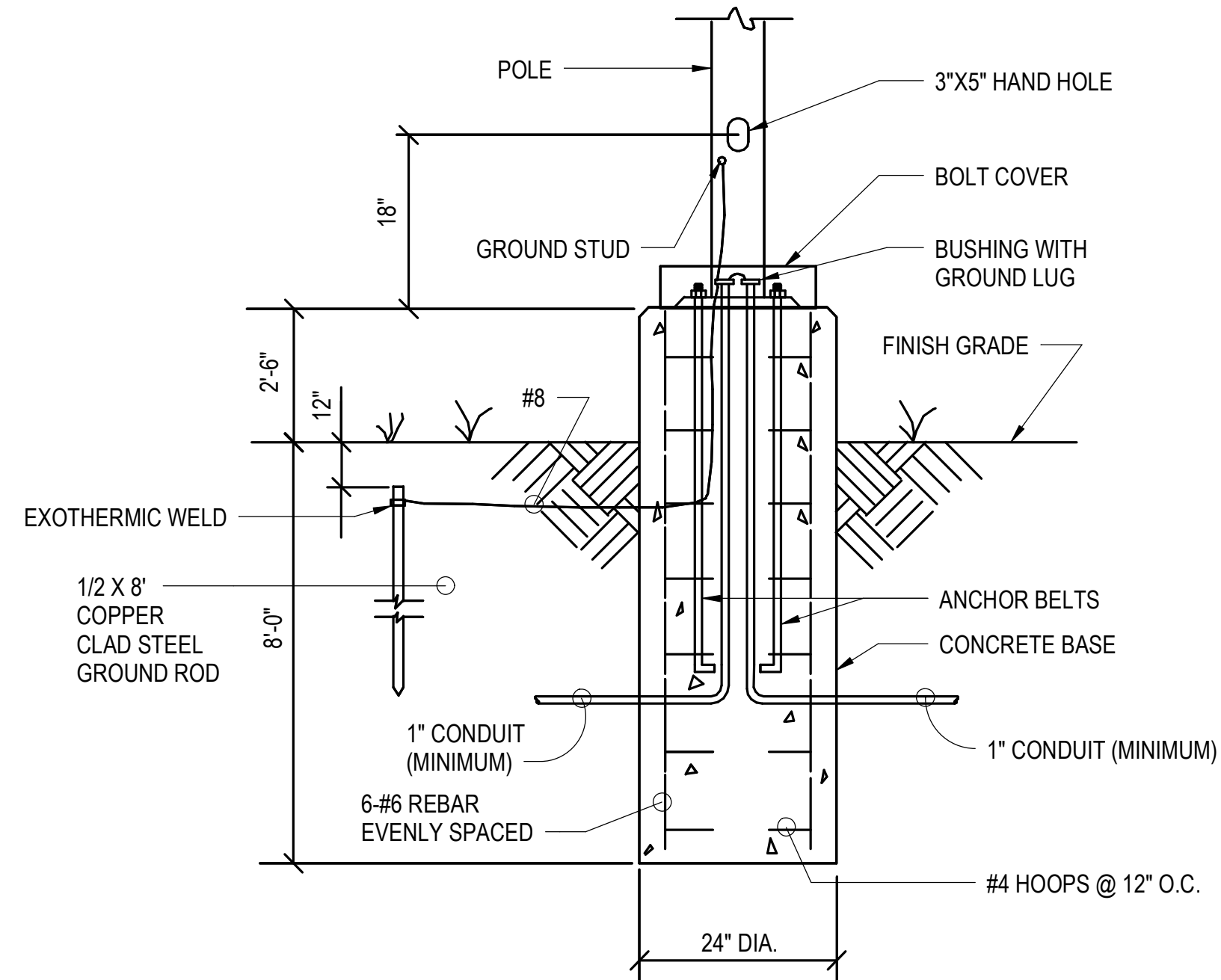
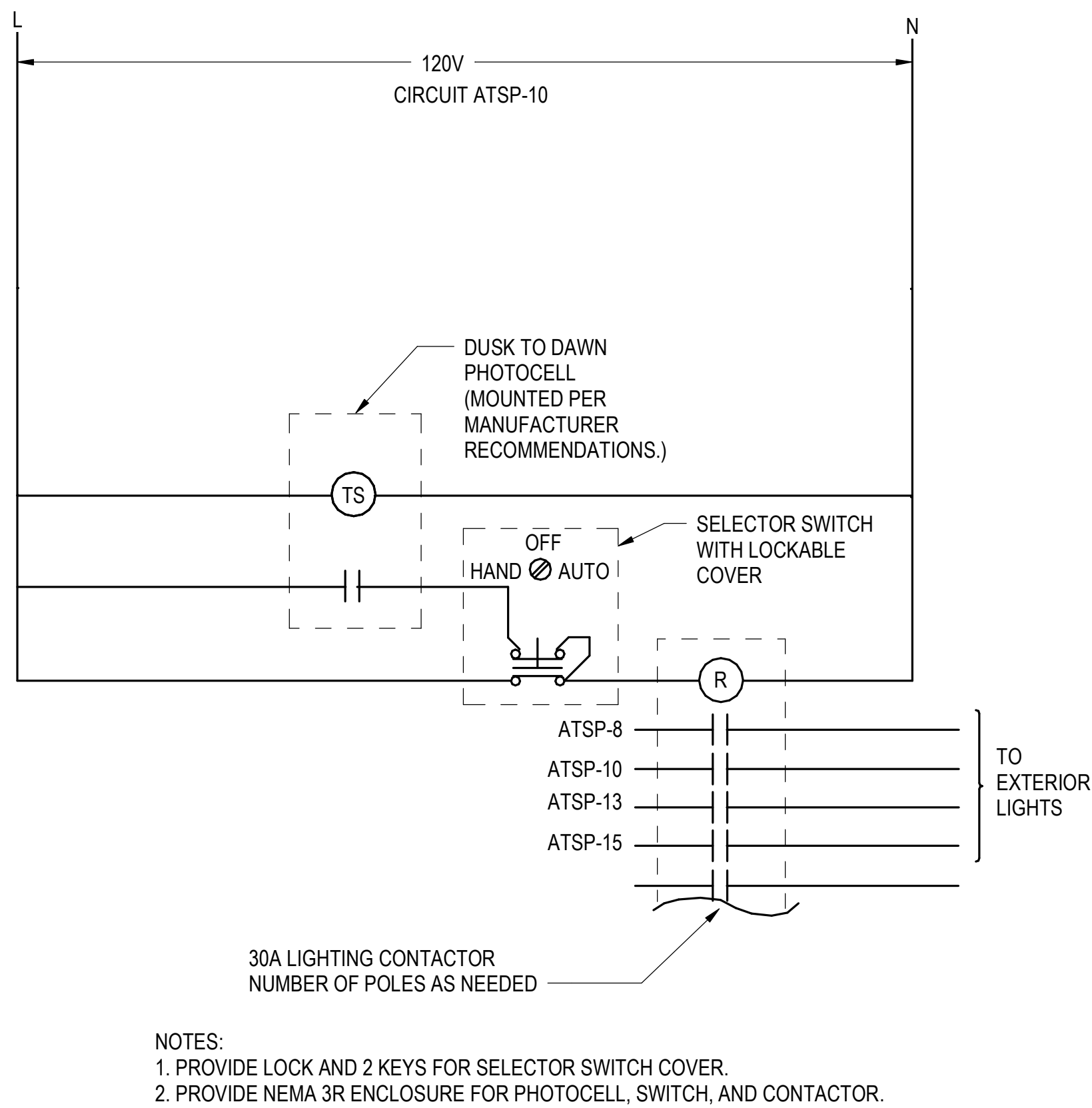
1 SYSTEMS PLAN

1/4" = 1'-0"



SCALE : 1/4" = 1'-0"





Project —

AEROJET

New Guard

Post - 2

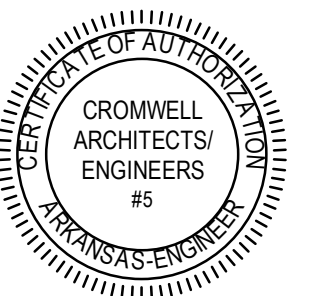
Design Phase —

CONSTRUCTION DOCUMENTS

Revisions —

[illegible]

Stamp —



07-17-2024

Notes —

1. CROMWELL ARCHITECTS ENGINEERS, INC.
ALL RIGHTS RESERVED

2. THIS SHEET DESIGNED FOR COLOR PRINTING. CRITICAL INFORMATION MAY BE LOST WITH BLACK AND WHITE PRINTING.

Project Number _____

Issue Date 2024-052

Sheet Title —

ELECTRICAL DETAILS

Sheet Number —

E-501

| LIGHTING FIXTURE SCHEDULE | | | | | | | | |
|---------------------------|-----------------|----------------------------------|---------|--------|----------------------|-------------------------|--|-------------|
| TYPE | MANUFACTURER | CATALOG NUMBER | VOLTAGE | SOURCE | TOTAL FIXTURE LUMENS | MAXIMUM FIXTURE WATTAGE | DESCRIPTION | KEYED NOTES |
| A1 | COOPER LIGHTING | 22CGTX-45-L835 | UNV | LED | 4500 | 36 | 2X2 RECESSED LED PANEL | |
| A1E | COOPER LIGHTING | 22CGTX-45-EL7W-L835 | UNV | LED | 4500 | 36 | 2X2 RECESSED LED PANEL | 1 |
| C1 | COOPER LIGHTING | TT-D8-740-U-WQ-NW | UNV | LED | 18000 | 153 | CANOPY LED LIGHTS | |
| VA | COOPER LIGHTING | 4AWS-L3C39-CA-UNV | UNV | LED | 4000 | 32 | VANITY FIXTURE | |
| P1 | BEACON LIGHTING | (1) VP-4-720L-565-4K7-4W-UNV-DBT | UNV | LED | 75000 | 565 | PARKING LOT LIGHTING | |
| P2 | BEACON LIGHTING | (2) VP-4-720L-565-4K7-4W-UNV-DBT | UNV | LED | 75000 PER HEAD | 565 PER HEAD | PARKING LOT LIGHTING | |
| P-POLE | BEACON LIGHTING | RSS-B-30-60-C-XX-DBT | - | - | - | - | 30'-0" SQUARE POLE | 3 |
| W1 | COOPER LIGHTING | PRV-P-PA1B-740-U-T4W-WM-BK | UNV | LED | 4000 | 59 | EXTERIOR WALL PACK | |
| W1E | COOPER LIGHTING | PRV-P-PA1B-740-U-T4W-WM-BK-CBP | UNV | LED | 4000 | 59 | EXTERIOR WALL PACK | 1 |
| X | COOPER LIGHTING | EDG-1-R-EL | 120/277 | LED | N/A | 3.1 | EXIT LIGHT, ARROWS AND FACES PER PLANS | 1 |

SN = SOLID NEUTRAL
EQP GND = EQUIPMENT GROUND BUS
IG = INSULATED GROUND BUS
SPD = SURGE PROTECTIVE DEVICE
AIC = AMPERE INTERRUPTING CAPACITY
KAIC = KILO AMPERE INTERRUPTING CAPACITY

| | | | | | | | | | | | | | | | | | | | | | | | |
|-------------|------|---------|----------------|----------|------------------------|---------|------|---------------------------------------|------------|------------|-------------------|-----------------|------------------------|-------------|---------------------|------|-------|--------------|--------|--|--|--|--|
| PANEL | | LP1 | | MOUNTING | | SURFACE | | LOCATION | | UTILITY RM | | MAIN BUS RATING | | | | 100 | | AMPS | | | | | |
| MAIN | | CB | | POLES | | 2 | | FRAME | | 80 | | TRIP | | 80 | | | | | | | | | |
| VOLTAGE | | 120/240 | | PHASE | | 1 | | MINIMUM BREAKER INTERRUPTING CAPACITY | | | | | | | | | | 10KA | | | | | |
| ACCESSORIES | | | | | | | | | | | | | | | | | | SN + EQP GND | | | | | |
| DEVICE | | | BRANCH CIRCUIT | | | | | | PHASE LOAD | | | | BRANCH CIRCUIT | | | | | | DEVICE | | | | |
| AMPS | TRIP | POLES | TYPE | LOAD | DESCRIPTION | VOLT | AMPS | NO | VOLT | AMPS | NO | VOLT | AMPS | DESCRIPTION | LOAD | TYPE | POLES | AMPS | TRIP | | | | |
| 20 | 1 | | | R | RECEPTS OFFICE | 720 | 1 | | 1520 | | 2 | 800 | FRIDGE OFFICE 100 | M | G | | 1 | 20 | | | | | |
| 20 | 1 | | | R | RECEPTS OFFICE | 720 | 3 | | | 1080 | 4 | 360 | RECEPTS COUNTER RM 100 | R | G | | 1 | 20 | | | | | |
| 20 | 1 | | | R | VISITOR BADGE UP RECPT | 360 | 5 | | 960 | | 6 | 600 | WATER COOLER | M | G | | 1 | 20 | | | | | |
| 20 | 1 | | | | SPARE | | 7 | | | 500 | 8 | 500 | CAMERA POWER SUPPLY | M | | | 1 | 20 | | | | | |
| 20 | 1 | G | R | R | RCPS RM103, AC & EF-1 | 710 | 9 | 1210 | | | 10 | 500 | DOOR POWER SUPPLY | M | | | 1 | 20 | | | | | |
| 20 | 1 | G | R | R | WATER SOFTNER MECH | 180 | 11 | | | 1680 | 12 | 1500 | SERVER RACK | M | | | 1 | 20 | | | | | |
| 20 | 1 | | | | SPARE | | | 13 | | | 14 | | SPARE | | | | 1 | 20 | | | | | |
| 20 | 1 | | | | SPARE | | | 15 | | | 16 | | SPARE | | | | 1 | 20 | | | | | |
| 20 | 1 | | | | SPARE | | | 17 | | | 18 | | SPARE | | | | 1 | 20 | | | | | |
| 20 | 1 | | | | SPARE | | | 19 | | | 20 | | SPARE | | | | 1 | 20 | | | | | |
| 20 | 1 | | | | SPARE | | | 21 | | | 22 | | SPARE | | | | 1 | 20 | | | | | |
| 20 | 1 | | | | SPARE | | | 23 | | | 24 | | SPARE | | | | 1 | 20 | | | | | |
| | | | | | | | | 25 | | | 26 | | | | | | | | | | | | |
| | | | | | | | | 27 | | | 28 | | | | | | | | | | | | |
| | | | | | | | | 29 | | | 30 | | | | | | | | | | | | |
| | | | | | | | | 31 | | | 32 | | | | | | | | | | | | |
| | | | | | | | | 33 | | | 34 | | | | | | | | | | | | |
| | | | | | | | | 35 | | | 36 | | | | | | | | | | | | |
| | | | | | | | | 37 | | | 38 | | | | | | | | | | | | |
| | | | | | | | | 39 | | | 40 | | | | | | | | | | | | |
| | | | | | | | | 41 | | | 42 | | | | | | | | | | | | |
| TOTAL | | | | | | | | | 3690 | 3260 | 7 KVA (CONNECTED) | | | | 29 AMPS (CONNECTED) | | | | | | | | |
| | | | | | | | | | | | 7 KVA (DEMAND) | | | | 29 AMPS (DEMAND) | | | | | | | | |

E-601