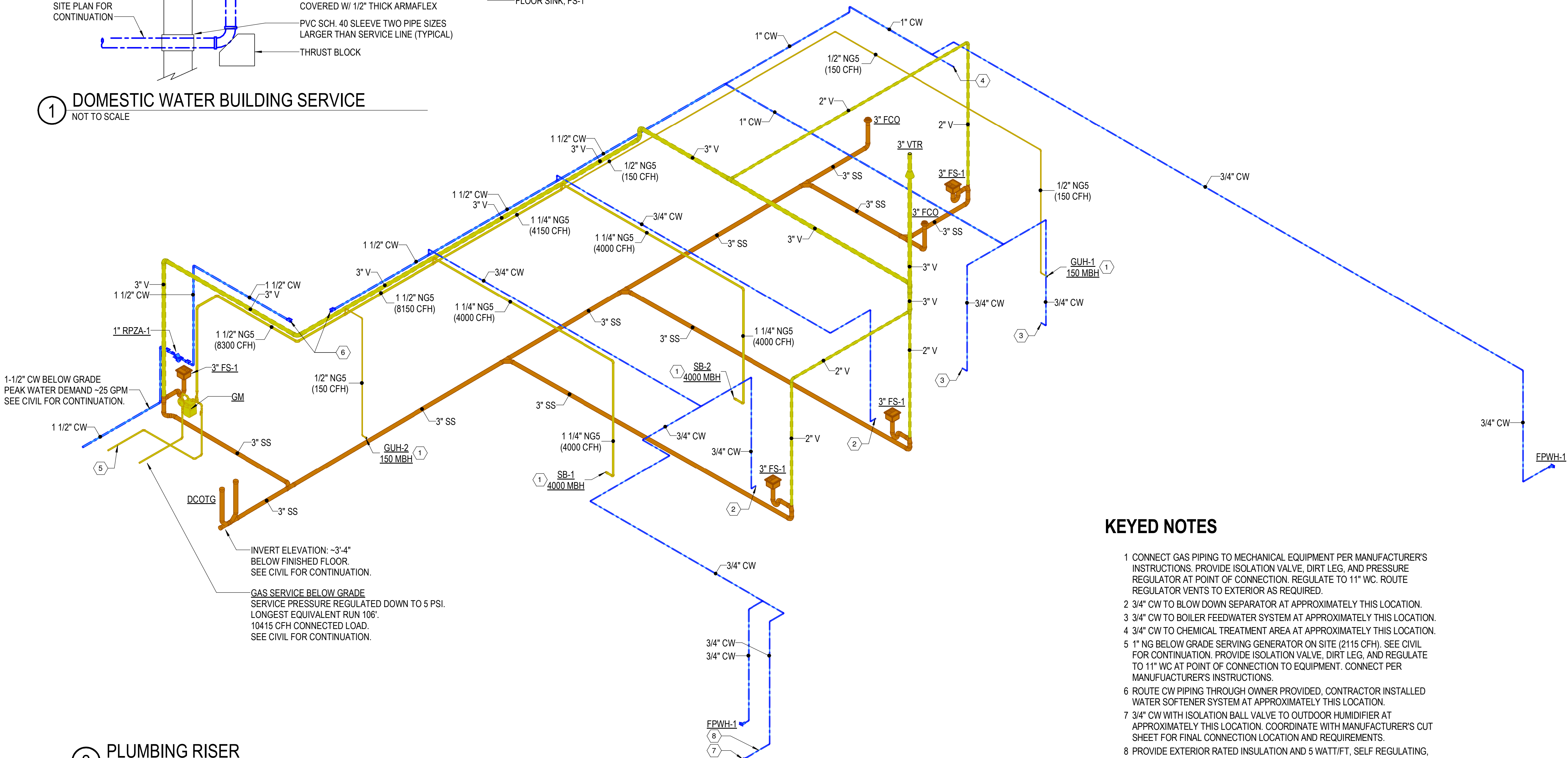


1 DOMESTIC WATER BUILDING SERVICE
NOT TO SCALE

PLUMBING FIXTURE									
ID	BASIS OF DESIGN		COLD	HOT	WASTE	INDIRECT	VENT	TRAP	SPECIFICATION
	MANUFACTURER & MODEL	ACCESSORIES							
FPWH-1	WOODFORD #B67	PROVIDE FULL PORT ISOLATION BALL VALVE FOR FIXTURE,	3/4"	---	---	---	---	---	FREEZEPROOF WALL HYDRANT - ENCLOSED IN BOX, SIZE FOR WALL THICKNESS+4", RED BRASS VALVE BODY, 3/8" SOLID BRASS OPERATING ROD, HARDENED STAINLESS STEEL STEM, ONE PIECE VALVE PLUNGER, COPPER CASTING TUBES, DRAIN PORT UNDER NOZZLE, 3/4" HOSE CONNECTION W/ HIGH FLOW DOUBLE CHECK BACKFLOW PREVENTER, ADJUSTABLE WALL CLAMP
FS-1	JR SMITH #3100Y		---	---	SEE PLAN	---	2"	SEE PLAN	FLOOR SINK - 10"x10"x6"D, MEDIUM DUTY, SQUARE TOP ACID RESISTANT COATED CAST IRON W/ FLANGE AND SEEPAGE HOLES, BOTTOM ALUMINUM DOME STRAINER, NICKEL BRONZE RIM W/ SECURED GRATE,

PLUMBING ACCESSORY			
ID	BASIS OF DESIGN	UTILITY CONNECTION	SPECIFICATION
	MANUFACTURER & MODEL		
RPZA-1	FEBCO #825YA	1"CW	REDUCED PRESSURE ZONE ASSEMBLY - 13-1/3"x8-1/2"x8", 1" ASSEMBLY, VERTICAL UP FLOW IN/HORIZONTAL FLOW OUT, MAINLINE VALVE & RELIEF VALVE BODY SHALL BE BRONZE, CHECK VALVE MOVING MEMBERS SHALL BE CENTER STEM GUIDED, RELIEF VALVE SHALL HAVE REMOVABLE SEAT RING, ALL SEAT DISCS SHALL BE REVERSIBLE, INCLUDES TWO INDEPENDENTLY OPERATING, SPRING LOADED, "Y" PATTERN CHECK VALVES, AND ONE HYDRAULICALLY DEPENDENT DIFFERENTIAL RELIEF VALVE, INCLUDE WYE-STRAINER ON VERTICAL INLET, MAX WORKING PRESSURE 175 PSI, MAX TEMPERATURE RANGE 32F-140F, 11 PSI HEAD LOSS @25 GPM, ASSE 1013 CERTIFIED, ANSI/AWWA C511 APPROVED
FCO	WADE #6000-1 SERIES	SAME SIZE AS LINE, MAX 4"	FLOOR CLEANOUT - SAME SIZE AS LINE, MAX. 4", HEAVY DUTY CAST IRON, FERRULE, THREADED ADJUSTABLE HOUSING, INTEGRAL CLAMPING COLLAR, ABS PLUG, 6-3/4"DIA ROUND SCORIATED SECURE TOP WITH SATIN NICKEL-BRONZE FINISH
DCOTG	WADE #6000-12 SERIES	SAME SIZE AS LINE, MAX 4"	CLEANOUT-TO-GRADE/DOUBLE-CLEANOUT-TO-GRADE - SAME SIZE AS LINE, MAX. 4 INCH, HEAVY DUTY CAST IRON, FERRULE, THREADED ADJUSTABLE HOUSING, INTEGRAL CLAMPING COLLAR, ABS PLUG, 7-1/8 INCH SQUARE HEAVY DUTY DUCTILE IRON TOP



KEYED NOTES

- CONNECT GAS PIPING TO MECHANICAL EQUIPMENT PER MANUFACTURER'S INSTRUCTIONS. PROVIDE ISOLATION VALVE, DIRT LEG, AND PRESSURE REGULATOR AT POINT OF CONNECTION. REGULATE TO 11" WC. ROUTE REGULATOR VENTS TO EXTERIOR AS REQUIRED.
- 3/4" CW TO BLOW DOWN SEPARATOR AT APPROXIMATELY THIS LOCATION.
- 3/4" CW TO BOILER FEEDWATER SYSTEM AT APPROXIMATELY THIS LOCATION.
- 3/4" CW TO CHEMICAL TREATMENT AREA AT APPROXIMATELY THIS LOCATION.
- 1" NG BELOW GRADE SERVING GENERATOR ON SITE (2115 CFH). SEE CIVIL FOR CONTINUATION. PROVIDE ISOLATION VALVE, DIRT LEG, AND REGULATE TO 11" WC AT POINT OF CONNECTION TO EQUIPMENT. CONNECT PER MANUFACTURER'S INSTRUCTIONS.
- ROUTE CW PIPING THROUGH OWNER PROVIDED, CONTRACTOR INSTALLED WATER SOFTENER SYSTEM AT APPROXIMATELY THIS LOCATION.
- 3/4" CW WITH ISOLATION BALL VALVE TO OUTDOOR HUMIDIFIER AT APPROXIMATELY THIS LOCATION. COORDINATE WITH MANUFACTURER'S CUT SHEET FOR FINAL CONNECTION LOCATION AND REQUIREMENTS.
- PROVIDE EXTERIOR RATED INSULATION AND 5 WATT/FT, SELF REGULATING, 120V SINGLE PHASE, HEAT TRACE CABLE ON ALL EXPOSED CW PIPING.

2 PLUMBING RISER
NOT TO SCALE

Project

AEROJET BUILDING 66B
CURE OVEN BUILDING
EAST CAMDEN,
ARKANSAS

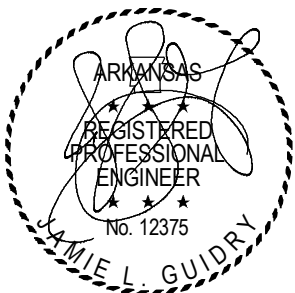
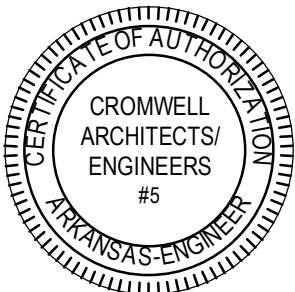
Design Phase

CONSTRUCTION
DOCUMENTS

Revisions

No.	Date	Description

Stamp



07-31-2024

Notes

- CROMWELL ARCHITECTS ENGINEERS, INC. ALL RIGHTS RESERVED
- THIS SHEET DESIGNED FOR COLOR PRINTING. CRITICAL INFORMATION MAY BE LOST WITH BLACK AND WHITE PRINTING.

Project Number

2024-045

Issue Date

07-31-2024

Sheet Title

PLUMBING RISER,
SCHEDULES, &
DETAILS

Sheet Number

P-901