

Project

AEROJET BUILDING 66B  
CURE OVEN BUILDING  
EAST CAMDEN,  
ARKANSAS

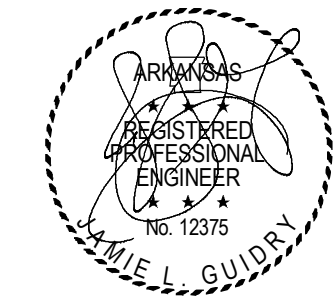
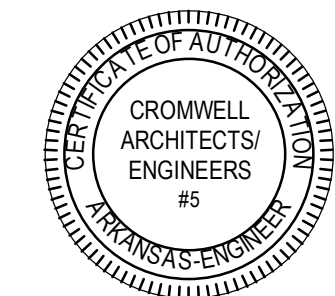
Design Phase

CONSTRUCTION  
DOCUMENTS

Revisions

No.	Date	Description

Stamp



Notes

1. CROMWELL ARCHITECTS ENGINEERS, INC. ALL RIGHTS RESERVED
2. THIS SHEET DESIGNED FOR COLOR PRINTING. CRITICAL INFORMATION MAY BE LOST WITH BLACK AND WHITE PRINTING.

Project Number 2024-045

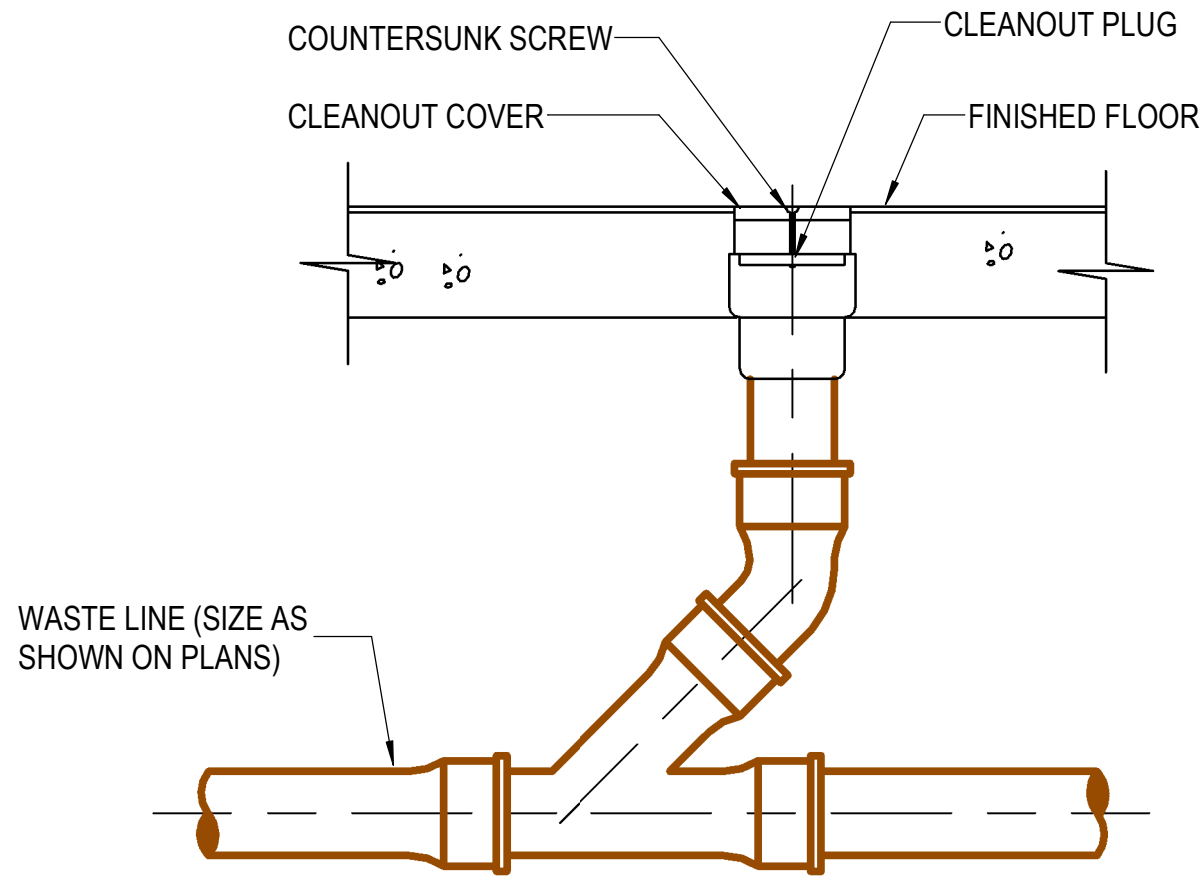
Issue Date 07-31-2024

Sheet Title

PLUMBING DETAILS

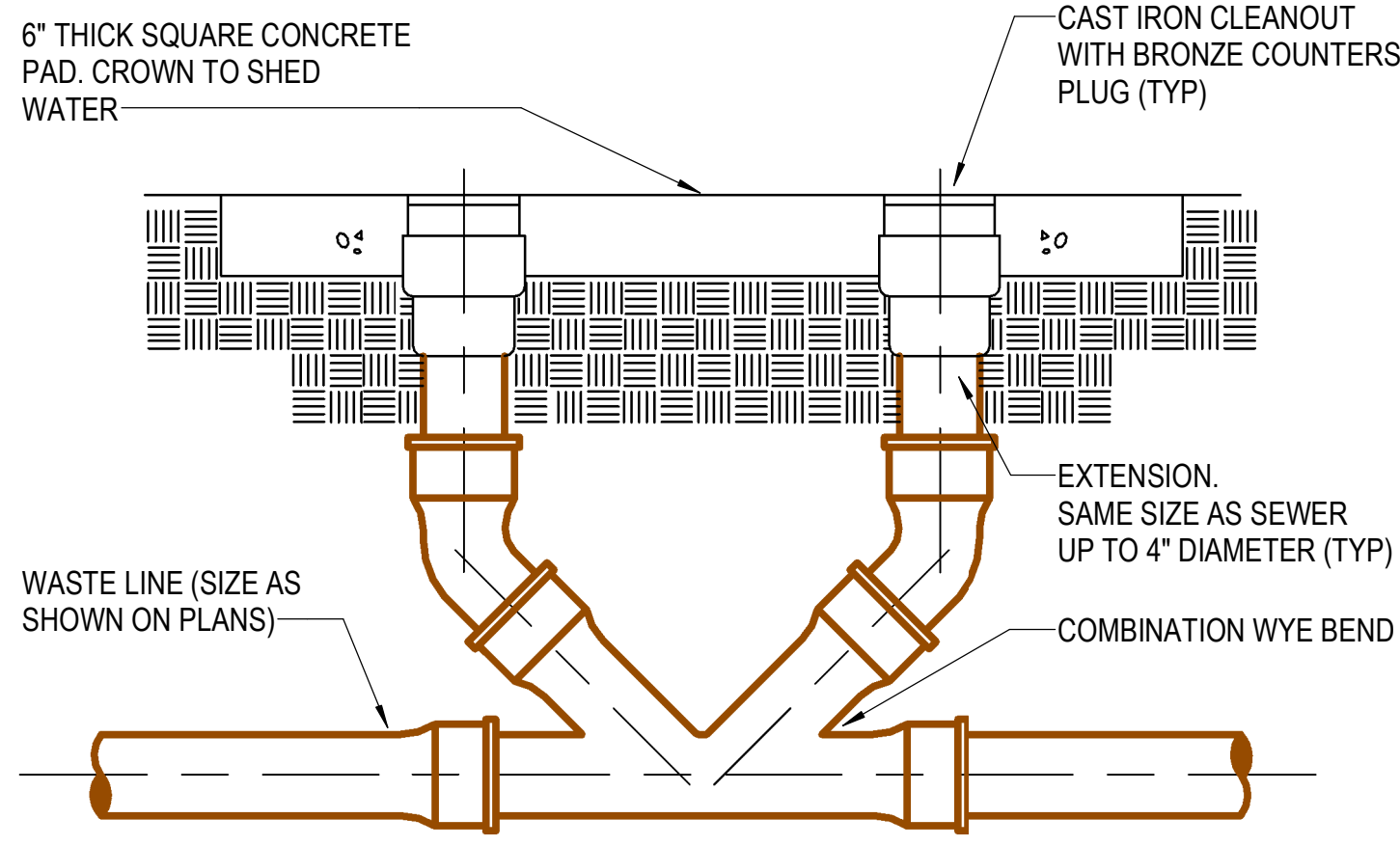
Sheet Number

P-501



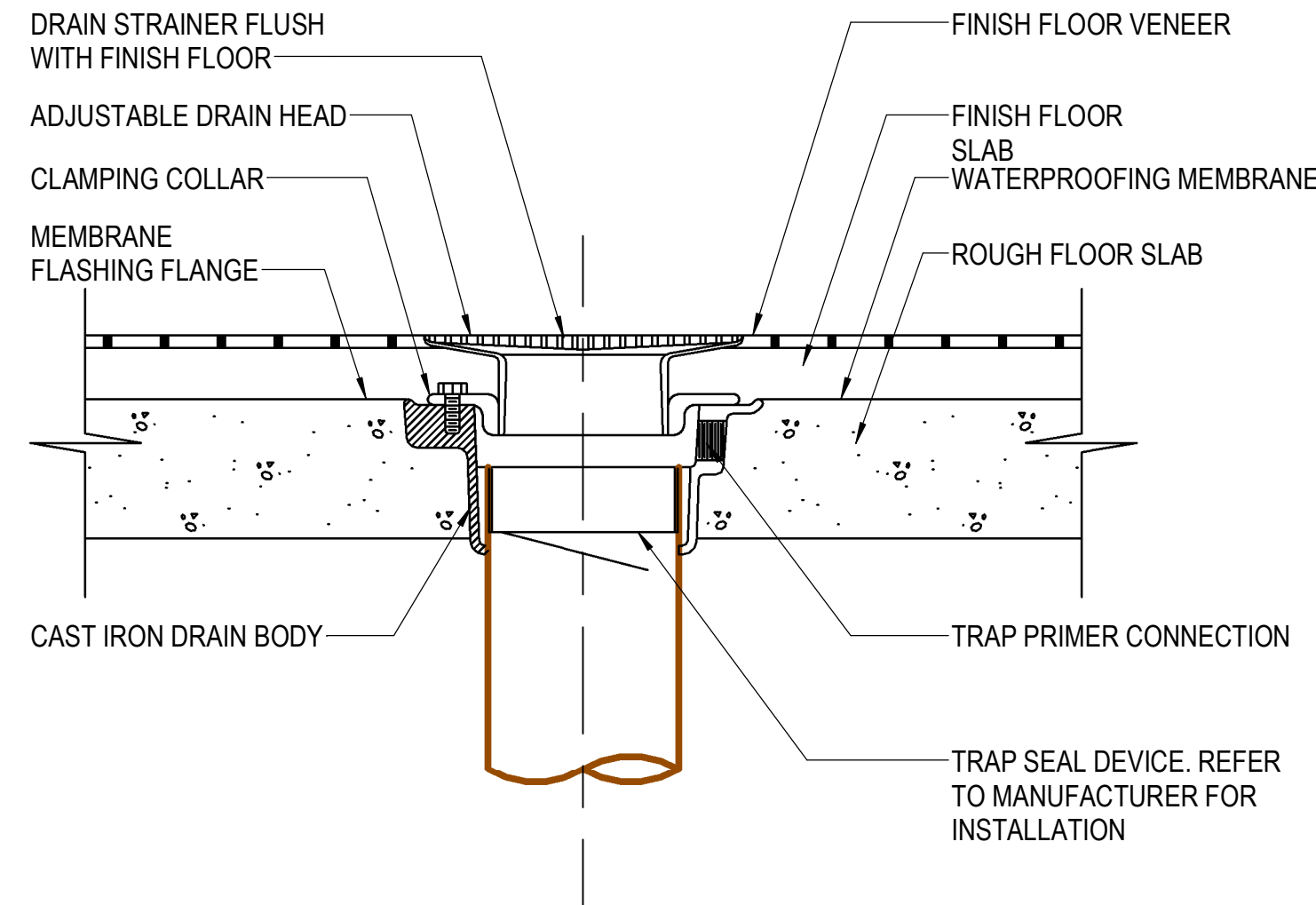
A FLOOR CLEANOUT

NOTE: SEE SPECIFICATIONS FOR MATERIALS



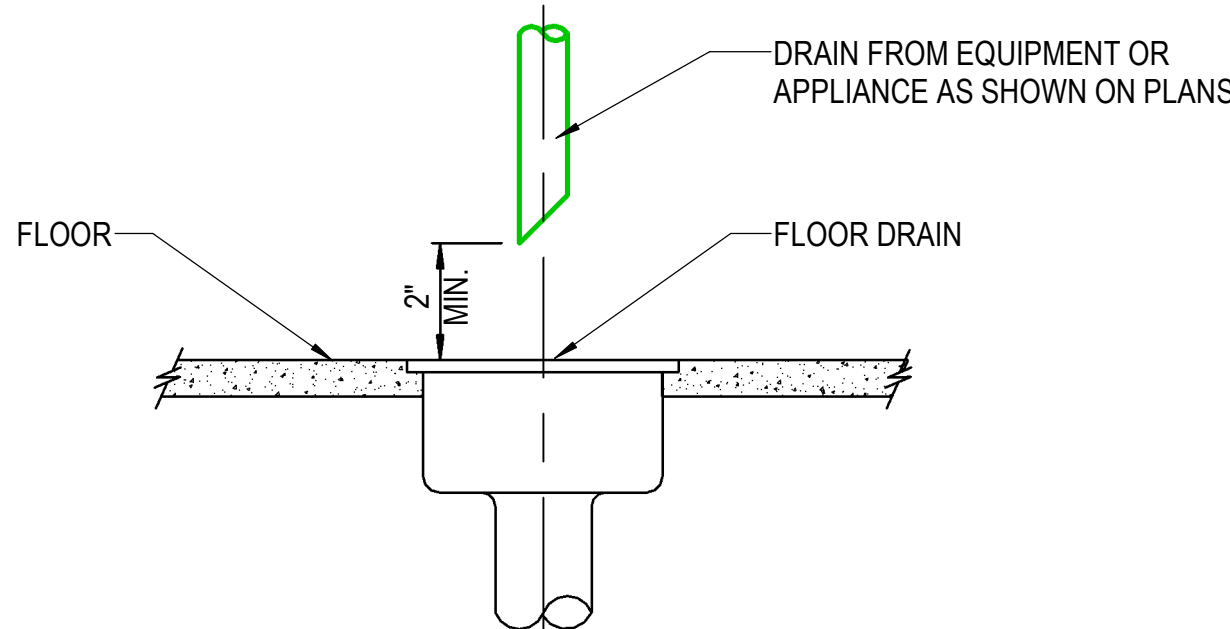
B DOUBLE CLEANOUT-TO-GRADE

NOTE: SEE SPECIFICATIONS FOR MATERIALS



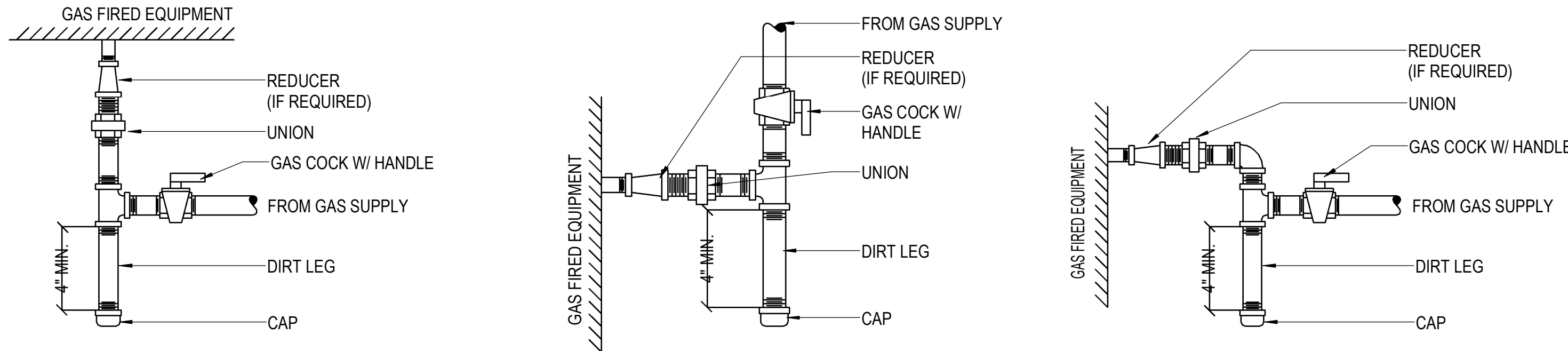
2 TRAP SEAL DEVICE INSTALLATION

NOT TO SCALE



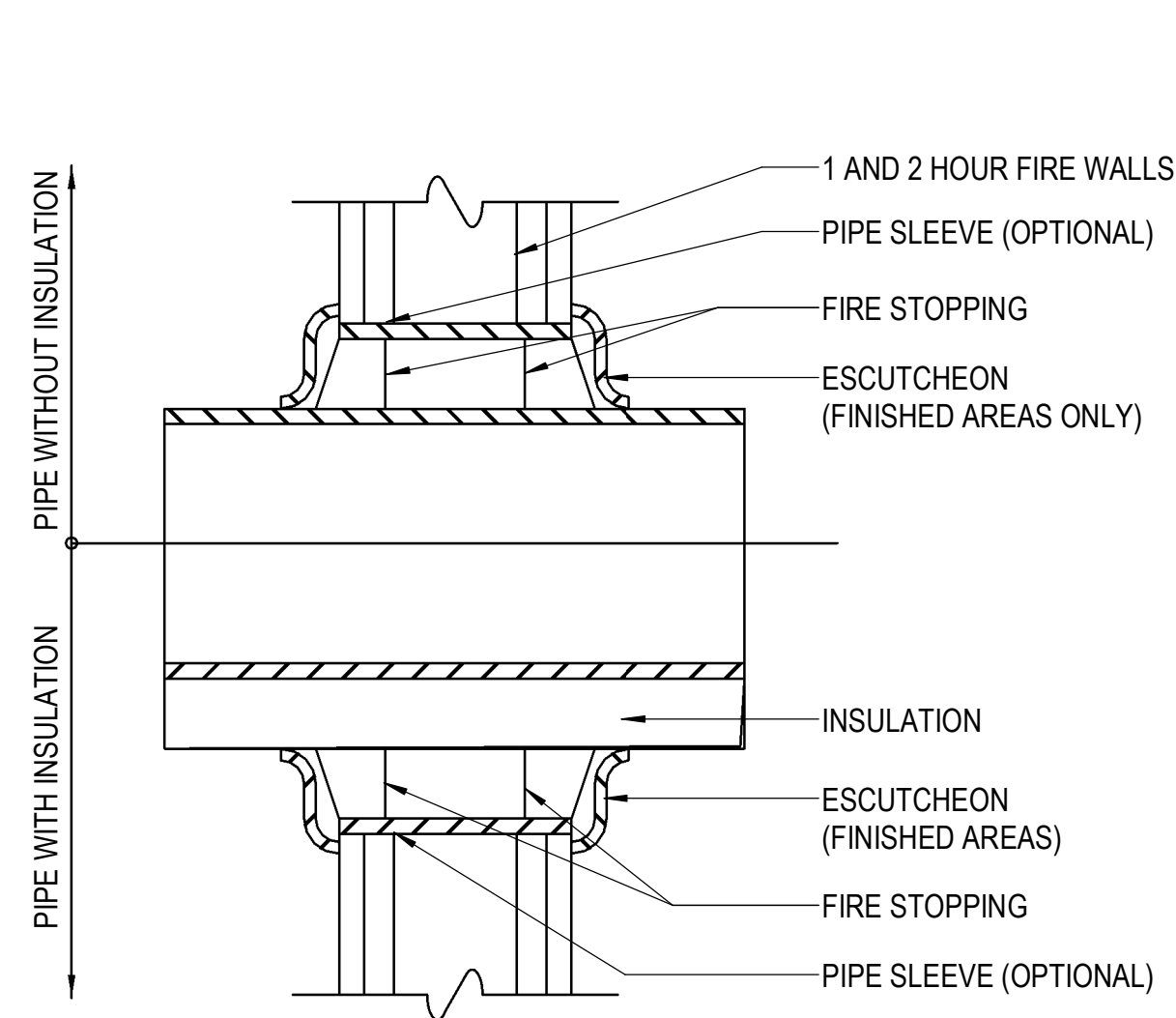
3 INDIRECT WASTE DRAIN

NOT TO SCALE



4 TYPICAL GAS PIPING CONNECTIONS

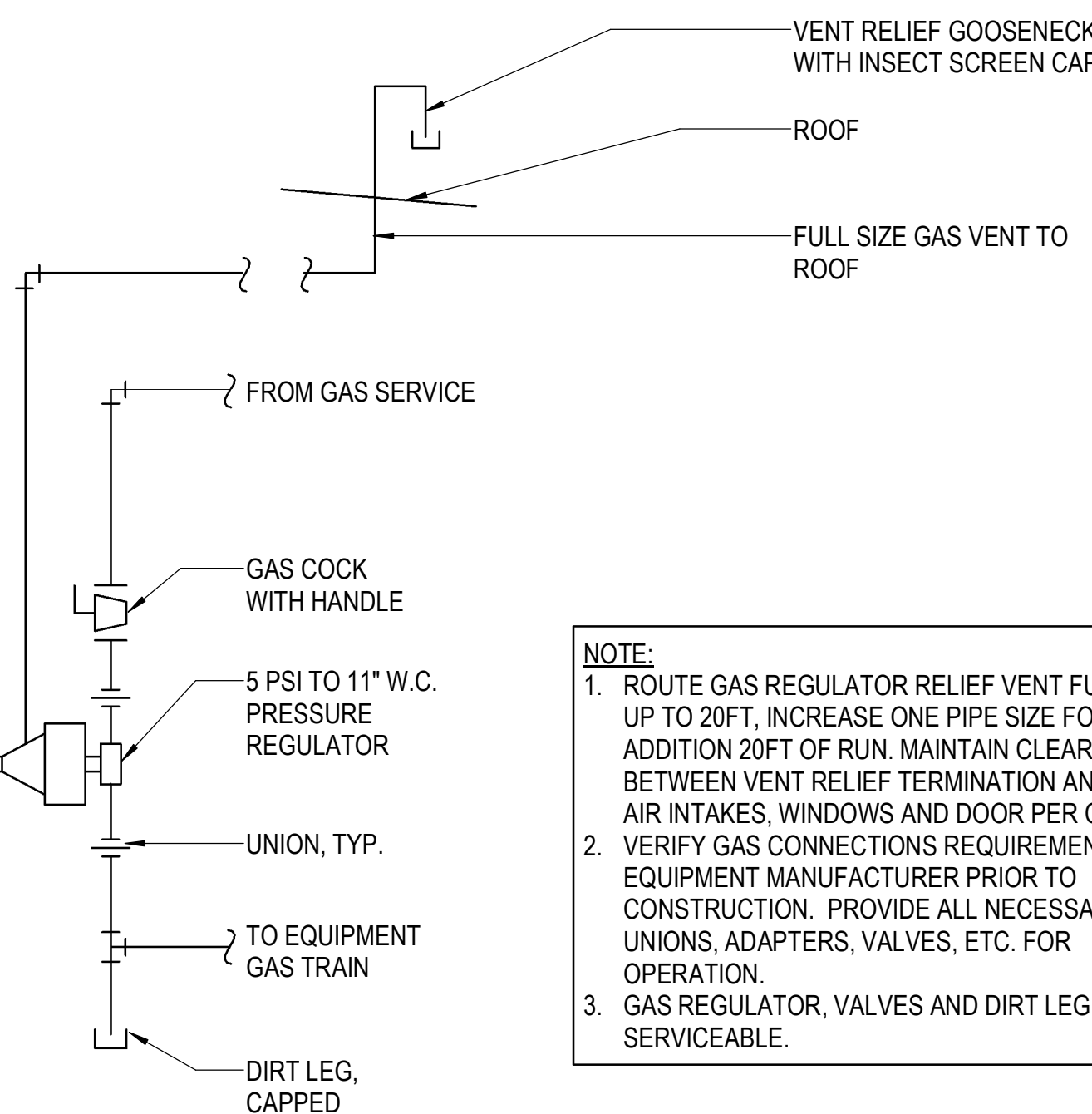
NOT TO SCALE



- NOTE:
1. FIRE STOPPING MATERIAL SHALL COMPLY WITH SECTION 07 84 00 OF THE SPECIFICATIONS.
  2. THIS DETAIL REPRESENTS ONE MANUFACTURER'S RECOMMENDATION FOR A WALL TYPE. THE CONTRACTOR SHALL CONSULT THE FIRE STOPPING MATERIALS MANUFACTURER FOR SPECIFIC INFORMATION AND SPECIFIC INSTALLATION INSTRUCTIONS FOR THE WALLS AND PARTITIONS APPLICABLE TO THIS PROJECT.

5 INTERIOR PIPE THRU FIRE RATED WALL

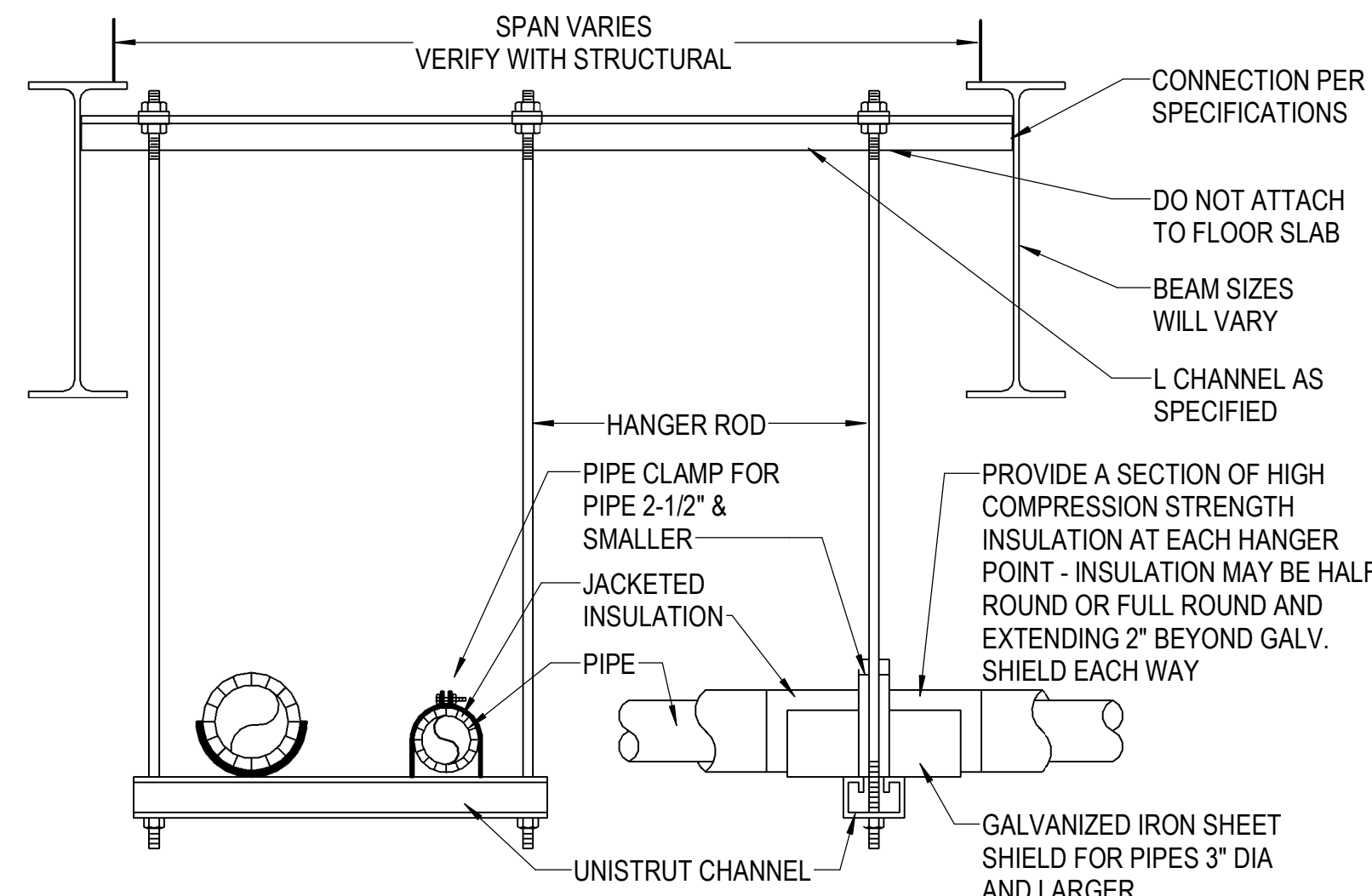
NOT TO SCALE



- NOTE:
1. ROUTE GAS REGULATOR RELIEF VENT FULL SIZE UP TO 20FT, INCREASE ONE PIPE SIZE FOR EACH ADDITION 20FT OF RUN. MAINTAIN CLEARANCE BETWEEN VENT RELIEF TERMINATION AND FRESH AIR INTAKES, WINDOWS AND DOOR PER CODE.
  2. VERIFY GAS CONNECTIONS REQUIREMENTS WITH EQUIPMENT MANUFACTURER PRIOR TO CONSTRUCTION. PROVIDE ALL NECESSARY UNIONS, ADAPTERS, VALVES, ETC. FOR OPERATION.
  3. GAS REGULATOR, VALVES AND DIRT LEG SHALL BE SERVICEABLE.

6 GAS REGULATOR VENTING

NOT TO SCALE



- NOTES:
1. INSULATION TO BE CONTINUOUS THROUGH HANGERS. DO NOT BREAK INSULATION AT SUPPORTS, DO NOT INSULATE AROUND HANGERS.
  2. INSULATION JACKET TO BE CONTINUOUS THROUGH PIPE SUPPORT COMPONENTS.
  3. USE CLEVIS HANGERS FOR SINGLE PIPE RUNS, USE TRAPEZE HANGERS TO GROUP AS MUCH PIPING AS POSSIBLE PER HANGER.

7 TRAPEZE PIPE HANGER

NOT TO SCALE