

GENERAL NOTES

1 REFER TO SHEET M-001 FOR MECHANICAL NOTES, ABBREVIATIONS, AND LEGEND SYMBOLS.

KEYED NOTES

- DROP WITH THE DUCT ALONG THE WALL AND TRANSITION AS REQUIRED TO CONNECT FULL SIZE THE SUPPLY DIFFUSER SERVING TUGGER ROOM 102. THE SUPPLY DIFFUSER SHALL BE INSTALLED APPROXIMATELY 10' A.F.F. PROVIDE A MANUAL BALANCING DAMPER IN THE 10/10 DUCT RISER.
- INSTALL THE HUMIDIFIER IN STRICT ACCORDANCE WITH THE MANUFACTURER'S INSTRUCTIONS.
- INSTALL THE STEAM DISPERSION TUBE ASSEMBLY IN THE DUCTWORK AND ROUTE THE 2" INSULATED STEAM TUBING FROM THE HUMIDIFIER TO THE DISPERSION ASSEMBLY IN STRICT ACCORDANCE WITH THE HUMIDIFIER MANUFACTURER'S INSTRUCTIONS.
- OF/CI "PAC-1" AND CONTRACTOR PROVIDED "EF-3" SHALL HAVE CONTROLS INTERLOCKED TO OPERATE SIMULTANEOUSLY.
- DISPERSION ASSEMBLY IS AT AN ELEVATION LOWER THAN THE STEAM GENERATOR DISCHARGE. DROP WITH THE STEAM TUBING ALONG THE SIDE OF THE HUMIDIFIER AND PROVIDE A TEE WITH A DRIP LEG WHERE THE TUBING TURNS HORIZONTAL TO ROUTE TO THE DUCT MOUNTED DISPERSION ASSEMBLY.
- RISE WITH S.A. DUCT UP ALONG THE EXTERIOR WALL APPROXIMATELY 20' A.F.F. PENETRATE THROUGH THE EXTERIOR WALL AND CONTINUE AS SHOWN. CONFIRM THE EXACT DUCT HEIGHT WITH THE OWNER PRIOR TO BID AND ROUGH-IN. COORDINATE THE EXACT DUCT PENETRATION LOCATION WITH THE BUILDING STRUCTURAL CROSS-BRACING.
- ROUTE THE 1" HUMIDIFIER BLOW-DOWN DRAIN TO THE HUB DRAIN IN THE MECHANICAL PAD AND TERMINATE AS DETAILED.

Project

AEROJET BUILDING 66B
CURE OVEN BUILDING
EAST CAMDEN,
ARKANSAS

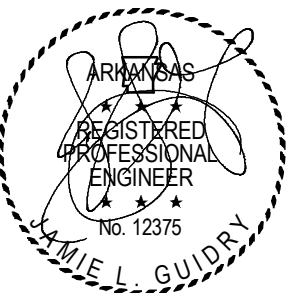
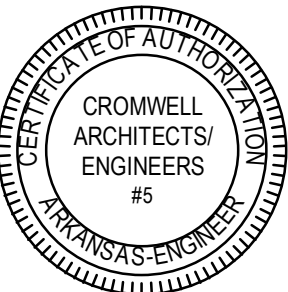
Design Phase

CONSTRUCTION DOCUMENTS

Revisions

No.	Date	Description

Stamp



07-31-2024

Notes

- CROMWELL ARCHITECTS ENGINEERS, INC. ALL RIGHTS RESERVED
- THIS SHEET DESIGNED FOR COLOR PRINTING. CRITICAL INFORMATION MAY BE LOST WITH BLACK AND WHITE PRINTING.

Project Number

2024-045

Issue Date

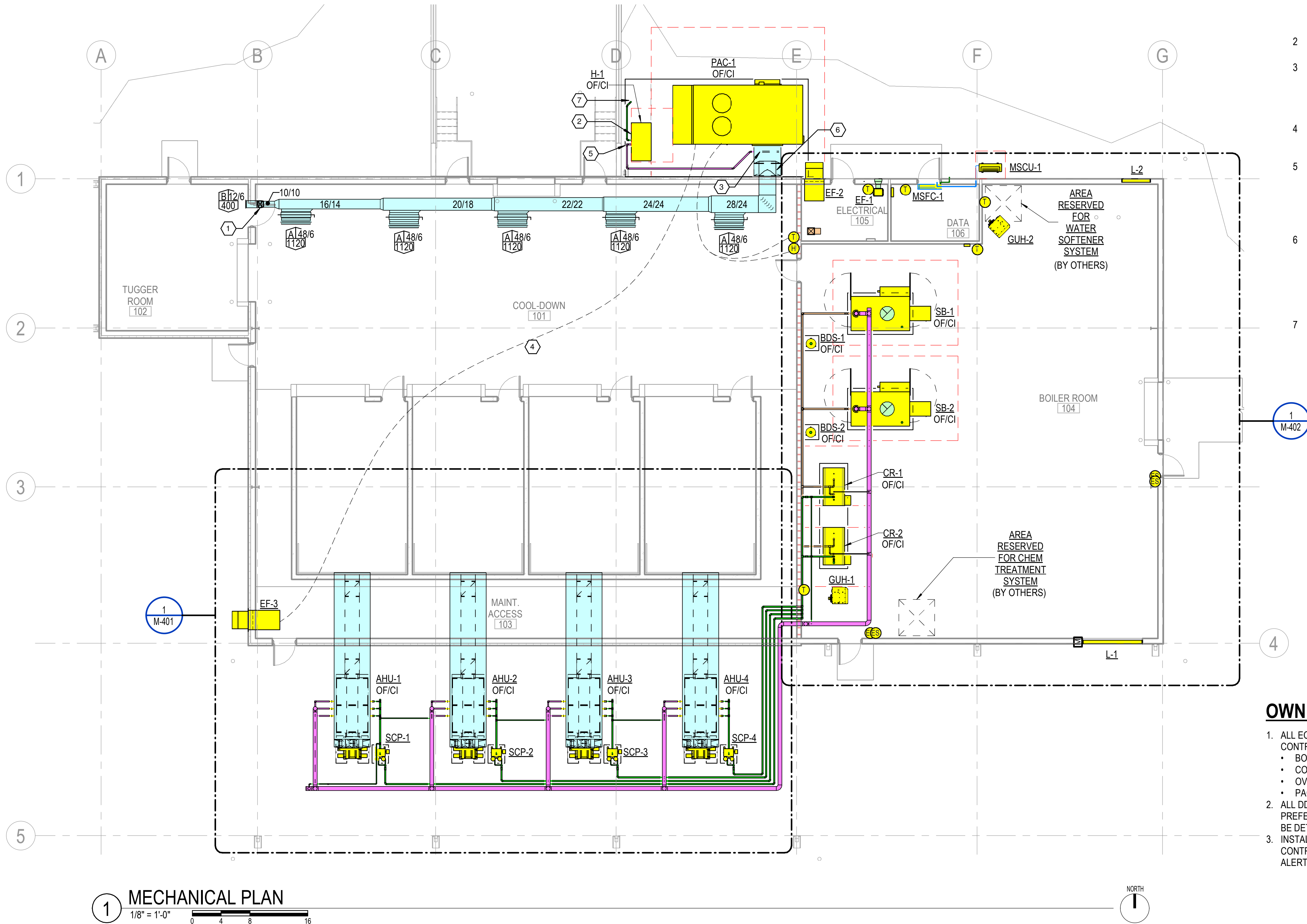
07-31-2024

Sheet Title

MECHANICAL PLAN

Sheet Number

M-101



OWNER FURNISHED SCOPE OF WORK

- ALL EQUIPMENT NOTED AS "OF/CI" SHALL BE OWNER FURNISHED AND CONTRACTOR INSTALLED. THIS INCLUDES:
 - BOILERS
 - CONDENSATE RECOVERY SYSTEMS
 - OVEN AIR HANDLING UNITS
 - PACKAGED 100% OUTSIDE AIR UNIT WITH SEPARATE HUMIDIFIER
- ALL DDC CONTROLS SHALL BE PROVIDED BY THE OWNER'S PREFERRED ALERTON CONTROLS VENDOR. EXACT POINTS LIST TO BE DETERMINED BY THE OWNER.
- INSTALLATION, START-UP, AND COMMISSIONING OF ALL DDC CONTROLS SHALL BE PROVIDED BY THE OWNER'S PREFERRED ALERTON CONTROLS VENDOR.