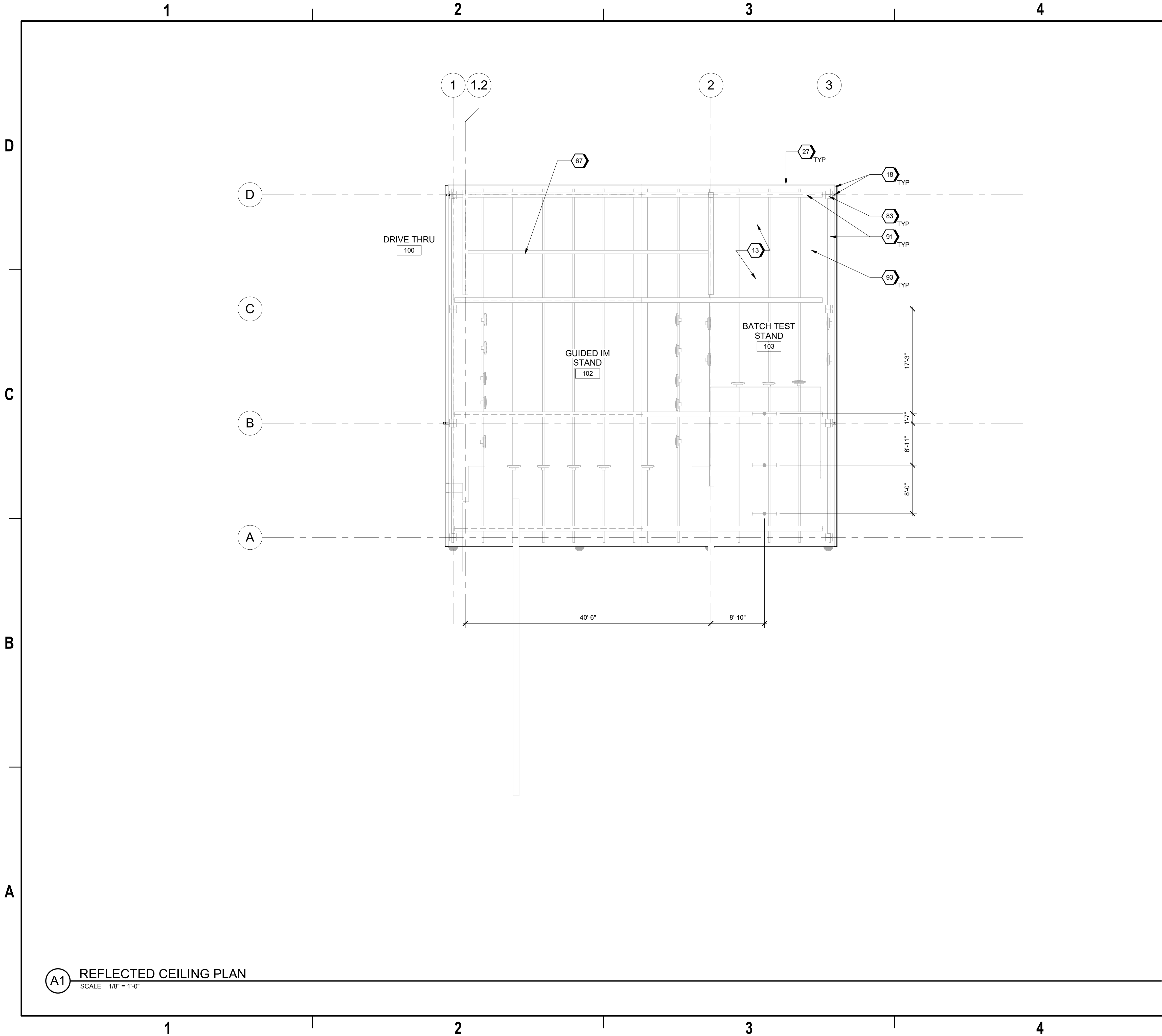


9/18/2024 9:43:32 AM AE121  
Autodesk Docs/US\_D0754500\_FED\_Aerojet Rocketdyne/D0754500\_CIMDL OSD\_TestStand\_ARCH-INT.rvt



**A1 REFLECTED CEILING PLAN**  
SCALE 1/8" = 1'-0"

## GENERAL SHEET NOTES

- FINISHED FLOOR ELEVATION 0'-0" IS A REFERENCE ELEVATION FOR COORDINATION WITH BUILDING ELEMENTS. ACTUAL ELEVATION IS INDICATED ON CIVIL DRAWINGS.
- FOR ARCHITECTURAL GENERAL NOTES, SYMBOLS, AND LEGEND, REFER TO SHEET G-003.
- FOR CAMPUS WIDE DETAILS, INCLUDING EXTERIOR ASSEMBLIES, REFER TO A-500 SERIES SHEETS.
- FOR BUILDING CODE DATA AND LIFE SAFETY PLAN, REFER TO DRAWING G-101.
- FOR FURNITURE AND EQUIPMENT, REFER TO EQUIPMENT PLANS SHEET A-151, A-401.
- SAT BUILDING IS CO-LOCATED ON SITE WITH TEST STAND, REFER TO A-401 THROUGH A-403 FOR SAT BUILDING, REFER TO CIVIL DRAWINGS FOR ADDITIONAL INFORMATION.
- FOR ARCHITECTURAL ROOF AND WALL ASSEMBLY, REFER TO SHEET A-800

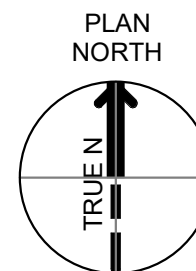
## #SHEET KEYNOTES

- |    |   |
|----|---|
| 13 | PEMB SHEET METAL ROOFINGS, RIDGE CAP, RAKE AND EAVE TRIM AND FLASHING - TYPICAL |
| 18 | CONT. METAL GUTTER 5" DEEP X 6" WIDE. COLOR TO MATCH THE BUILDING               |
| 27 | PEMB: RAKE TRIM AND FASCIA - TYPICAL  |
| 67 | 1-TON TOP RUNNING SINGLE GIRDER BRIDGE CRANE WITH 15'-0" MIN. HOOK HEIGHT ABOVE |
| 83 | STL COLUMN - TYPICAL  |
| 91 | STL STRUCTURAL FRAMING - TYPICAL  |
| 93 | STL PURLIN - TYPICAL  |

## LEGEND

- |  |   |
|--|---|
|  | GYPSUM BOARD CEILING AS SCHEDULED         |
|  | CONTROL JOINT                             |
|  | LIGHT FIXTURE; REFER TO ELECTRICAL        |
|  | EXIT LIGHT FIXTURE; REFER TO ELECTRICAL   |
|  | SUPPLY AIR DIFFUSERS; REFER TO MECHANICAL |
|  | RETURN AIR GRILLE; REFER TO MECHANICAL    |

## GRAPHIC SCALE(S)



SHEET NO <b>AE121</b>	
SCALE	As indicated
DATE	09/18/2024
PROJ	D3754502
DWG	CIMDL OSD_TestStand_AE121

DR	IE	NDYA	CHK	BH	TM
DSGN	NO.	DATE	REVISION	BY	APVD
0	09/18/2024	100% ISSUED FOR CONSTRUCTION - EXPANSION		IE	TM

1889 Bryan Street Suite 3500 Dallas, TX 75201  
Tel: 214-638-0145 Fax: 214-638-0447  
Entity: Jacobs Consultants Inc.  
License: Professional Engineer  
Exp. Date: 01/31/2025

Test Stand and SAT Building  
Camden OSD  
Calhoun County, Arkansas  
Aerojet Rocketdyne

**Jacobs**   
ARCHITECTURE  
REFLECTED CEILING PLAN

9/18/2024 9:43:32 AM