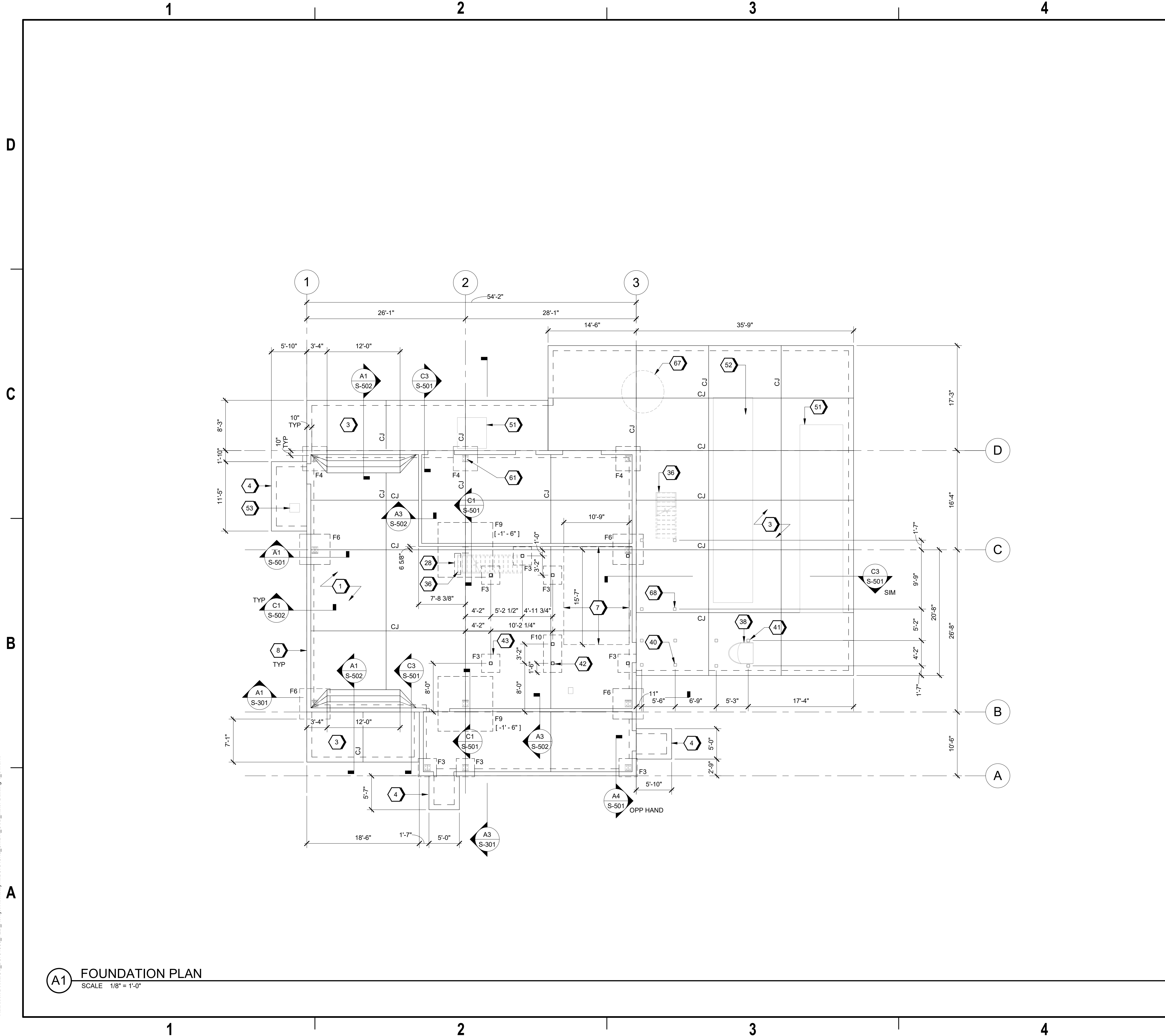


9/18/2024 4:15:02 PM SB101 Autodesk Docs://US\_D3754500\_FED\_Aerojet Rocketdyne/D3754500\_CMDN\_OSD\_Mixer-Building-1\_STR.rvt



**A1** FOUNDATION PLAN  
SCALE 1/8" = 1'-0"

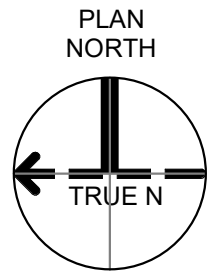
## GENERAL SHEET NOTES

- DESIGN DOCUMENTED HEREIN IS BASED ON METAL BUILDING SUPERSTRUCTURE PRELIMINARY LOADING. FINAL FOUNDATION SIZES TO BE DETERMINED.
- DATUM ELEVATION 0'-0" ON DRAWINGS CORRESPONDS TO ACTUAL SEA LEVEL ELEVATION OF +155.75', RE: CIVIL.
- REFER TO CMDN-OSD\_STANDARD-DETAILS\_S-80X SERIES SHEETS FOR ABBREVIATIONS, SYMBOLS, LEGENDS, AND GENERAL NOTES.
- REFER TO CMDN-OSD\_STANDARD-DETAILS\_S-81X SERIES SHEETS FOR TYPICAL DETAILS.
- REFER TO ARCHITECTURAL, MECHANICAL, ELECTRICAL, & PLUMBING SHEETS FOR SIZE AND LOCATION OF CONCRETE HOUSEKEEPING PADS, FLOOR PENETRATIONS, SLEEVES, DRAINS, RECESSES, AND CURBS.
- REFER TO ELECTRICAL FOR GROUNDING REQUIREMENTS AND DETAILS.
- REFER TO ARCHITECTURAL DRAWINGS FOR PRE-ENGINEERED METAL BUILDING HEIGHT AND GEOMETRY.
- COORDINATE DOOR OPENING LOCATIONS WITH ARCHITECTURAL DRAWINGS.
- CENTER ALL FOOTINGS UNDER COLUMNS UNLESS NOTED OTHERWISE.
- TOP OF FOOTING ELEVATION = -2'-0", UNLESS OTHERWISE NOTED.
- CJ DENOTES SLAB ON GRADE CONTROL JOINT, RE: S-811.
- F# DENOTES SPREAD FOOTING, RE: S-816 FOR FOOTING SCHEDULE.
- SLOPE ALL EXTERIOR CONCRETE FOR DRAINAGE.

## #>SHEET KEYNOTES

- 8" THICK SLAB-ON-GRADE REINF WITH #4 @ 12" OC EW, OVER 15 MIL VAPOR RETARDER OVER 4" CAPILLARY BARRIER. TOP OF SLAB ELEV = 0'-0".
- 8" THICK SLAB-ON-GRADE REINF WITH #4 @ 12" OC EW OVER 4" CAPILLARY BARRIER, TYP. T/SLAB EL = 0'-0".
- 6" THICK SLAB-ON-GRADE REINF WITH #4 @ 12" OC EW OVER 4" CAPILLARY BARRIER, TYP. T/SLAB EL = 0'-0".
- 3'-0" MAT FOUNDATION. REINF W/ #9 @ 12" OC EW T&B.
- CONCRETE CURB AT PEMB PERIMETER, TYP.
- STAIR STRINGER FOOTING, RE: C1/S-803
- PRE-FABRICATED STAIR, RE: ARCH BY STAIR MANUFACTURER/ENGINEER.
- ESCAPE SLIDE, BY ESCAPE SLIDE MANUFACTURER/ENGINEER. RE: ARCH FOR ADDL INFORMATION.
- ESCAPE SLIDE ACCESS PLATFORM COLUMN, TYP BY ESCAPE SLIDE MANUFACTURER/ENGINEER.
- ESCAPE SLIDE SUPPORT COLUMN TYP, BY ESCAPE SLIDE MANUFACTURER/ENGINEER.
- MECHANICAL PLATFORM COLUMN, TYP. 000
- MECHANICAL PLATFORM COLUMN FOUNDATION, TYP.
- TRANE RTAF 34 LWT, RE: MECHANICAL.
- AIR HANDLING UNIT (AHU) AQ126-04, RE: MECHANICAL.
- LIGHT DUTY PRESSURE BLOWER, RE: MECHANICAL.
- PEMB COLUMN TYP, BY PEMB MANUFACTURER.
- COOLING TOWER (55 TONS) RE:MECHANICAL.
- MAINTANENCE PLATFORM SUPPORT COLUMN.

## GRAPHIC SCALE(S)



<b>Jacobs</b> 1889 Bryan Street Suite 3500 Dallas, TX 75201 Tel: 214-638-0145 Fax: 214-638-0447 Entity: Jacobs Engineering Group Inc. License: Professional Engineering Exp. Date: 12/31/2024		<b>Jacobs</b> 1889 Bryan Street Suite 3500 Dallas, TX 75201 Tel: 214-638-0145 Fax: 214-638-0447 Entity: Jacobs Engineering Group Inc. License: Professional Engineering Exp. Date: 12/31/2024	
STATE OF ARKANSAS LICENSED PROFESSIONAL ENGINEER No. 22954 09/18/2024 <i>Justin C. Lorraine</i>		STATE OF ARKANSAS LICENSED PROFESSIONAL ENGINEER No. 22954 09/18/2024 <i>Justin C. Lorraine</i>	
Mixer-Building-1 Camden OSD Calhoun County, Arkansas Aerojet Rocketdyne		Mixer-Building-1 Camden OSD Calhoun County, Arkansas Aerojet Rocketdyne	
STRUCTURAL FOUNDATION PLAN		STRUCTURAL FOUNDATION PLAN	
SHEET NO SB101		SHEET NO SB101	
SCALE 1/8" = 1'-0"		SCALE 1/8" = 1'-0"	
DATE 09/18/2024		DATE 09/18/2024	
PROJ D3754502		PROJ D3754502	
DWG CMDN-OSD_Mixer-Building-1_SB101		DWG CMDN-OSD_Mixer-Building-1_SB101	

© Jacobs Solutions 2022. ALL RIGHTS RESERVED.