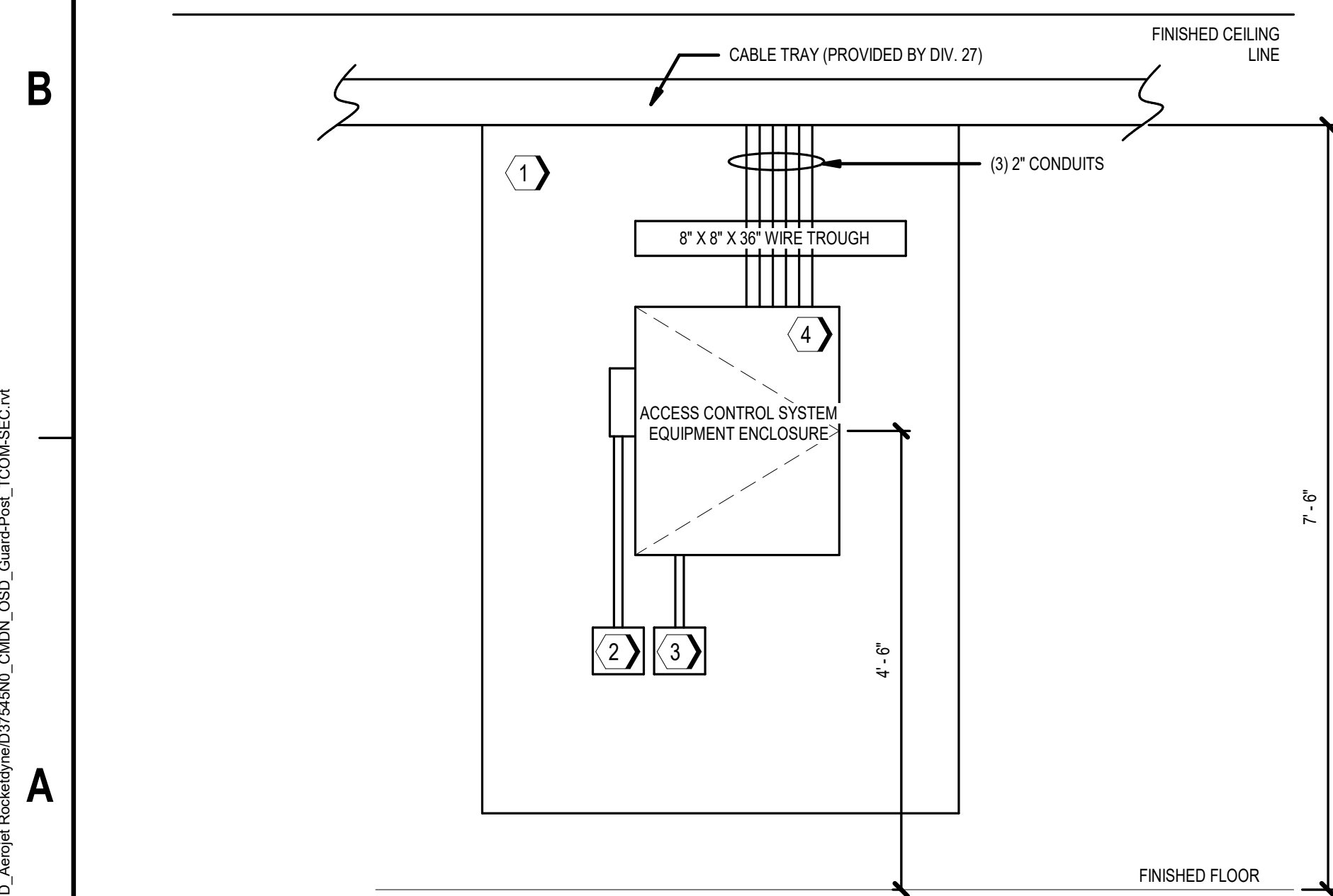


- ① JUNCTION BOX
- ② DOOR POSITION SWITCH (PROVIDED BY DIV.8)
- ③ 24VDC ELECTRIFIED LOCKING HARDWARE (PROVIDED BY DIV.8)
- ④ HID RP40 CARD READER
- ⑤ SINGLE GANG BOX

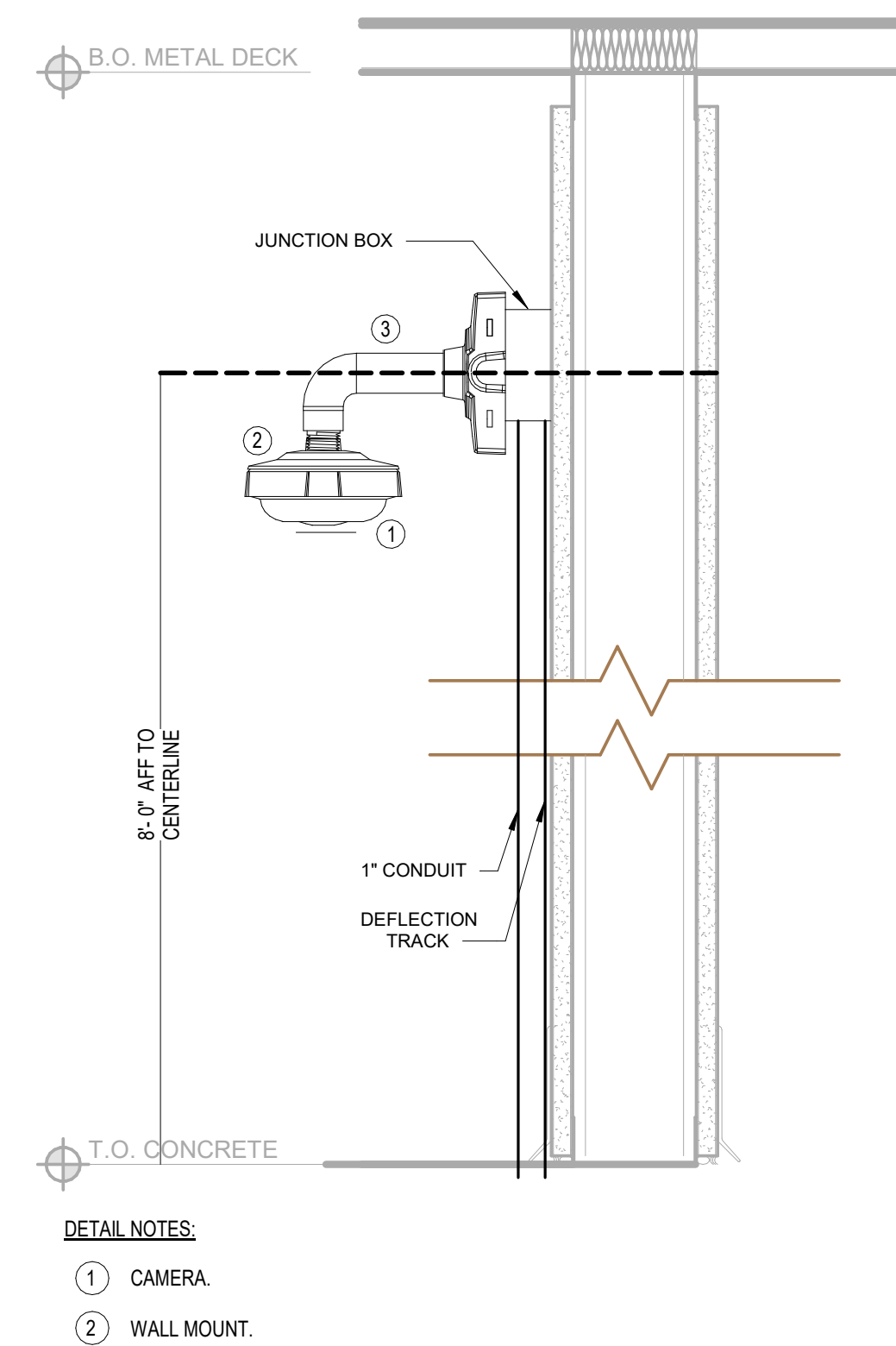
C1 SINGLE DOOR WITH CARD READER WITH KEYPAD
SCALE NTS



- NOTES:

1. PLYWOOD BACKBOARD, REFERENCE C SERIES COMMUNICATIONS SHEETS, TELECOMMUNICATION ROOM FLOOR PLANS. IF PANEL IS NOT LOCATED IN TELECOMMUNICATION ROOM, PROVIDE 48-INCH WIDE X 96-INCH HIGH X 3/4-INCH DEEP FIRE RATED PLYWOOD BACKBOARDS ON ENTIRE LENGTH OF THE WALL, MOUNTED 6-INCHES A.F.F. TO BOTTOM OF PLYWOOD BACKBOARD. (TYPICAL).
2. PROVIDE 120VAC 20A HARDWIRED EMERGENCY POWER CIRCUIT IN 4-INCH HIGH X 4-INCH WIDE X 2 1/8-INCH DEEP SCREW COVER BACKBOX.
3. PROVIDE INTERFACE TO FIRE ALARM SYSTEM TO UNLOCK FAIL-SAFE DOORS UPON FIRE ALARM ACTIVATION IN ACCORDANCE WITH APPLICABLE LIFE SAFETY AND BUILDING CODES. PROVIDE INTERFACE IN 4-INCH HIGH X 4-INCH WIDE X 2 1/8-INCH DEEP SCREW COVER BACKBOX.
4. PROVIDE MINIMUM 36-INCH HIGH X 30-INCH WIDE X 6 1/2-INCH DEEP 16 GAUGE, POLYESTER POWDER COATED, HINGED COVER, KEY LOCKABLE ENCLOSURE WITH TAMPER STRAP. ENCLOSURE WILL INCLUDE DEVICE AND LOCK POWER SUPPLIES, LOCK POWER DISTRIBUTION UNITS WITH FIRE ALARM RELAY INPUT, ALUMINUM BACKPLANE WITH AC AND BATTERY SLOTS TO PROTECT CABLES, FRONT SIDE SCREW ON STANDOFFS TO SIMPLIFY PANEL INSTALLATION, WIRE MANAGEMENT CHANNELS FOR PENDANT OR THE WRAP, PROTECTED AC COVER WITH OFF/ON CIRCUIT BREAKER, REMOVABLE DOOR WITH QUICK DISCONNECT GROUND STRAP AND KNOCKOUTS ON ALL FOUR SIDES.

A1 TYPICAL ACP ENCLOSURE ELEVATION
SCALE NOT TO SCALE



A4 WALL MOUNTED CAMERA
SCALE NTS

[illegible]