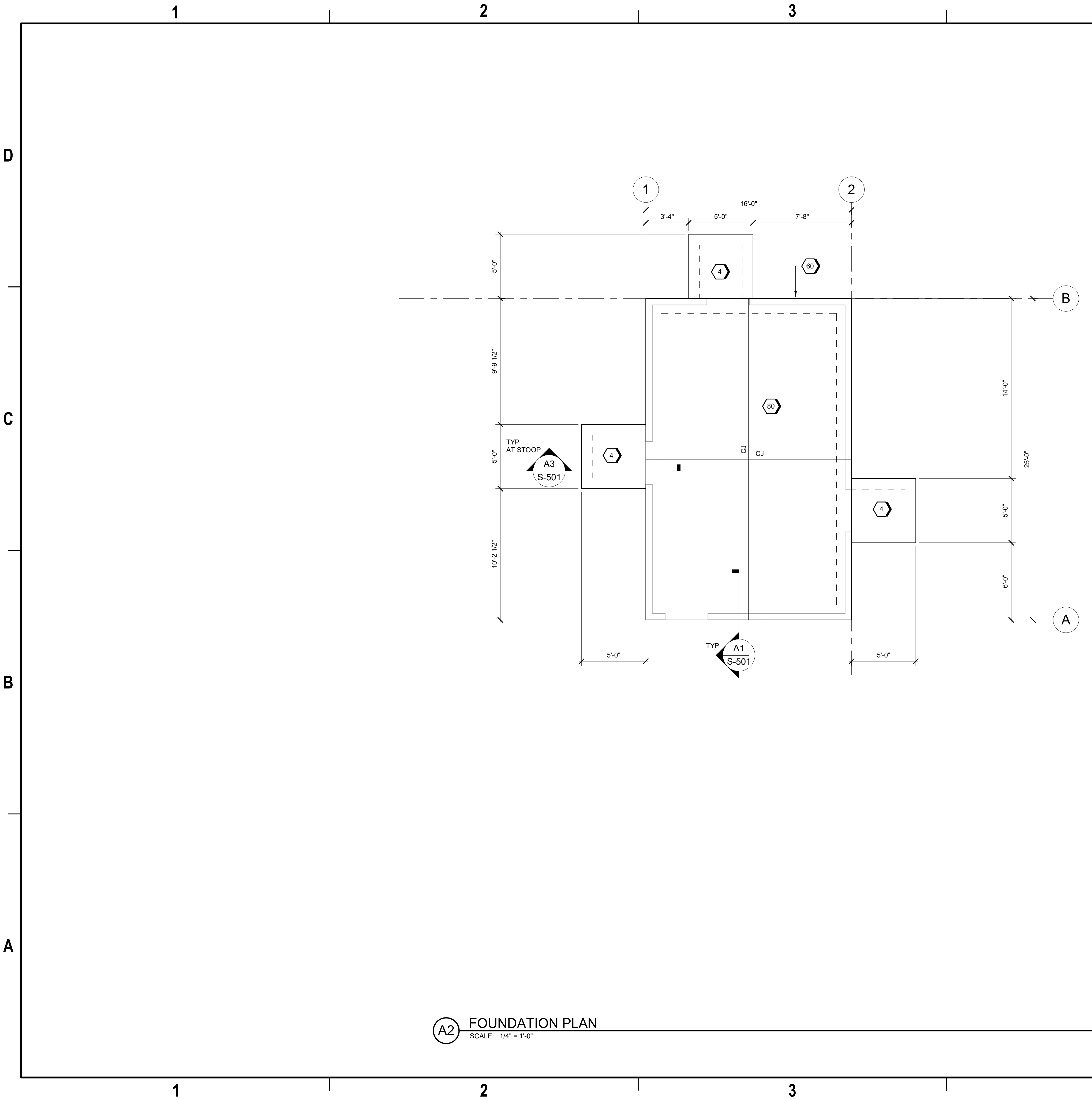


9/18/2024 3:46:14 PM SB101
Autodesk Docs/US_D0754502_FED_Aerojet Rocketdyne/D3754502_CMDN_OSD_GuardPost_STR.rvt



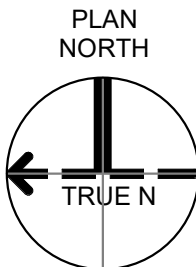
GENERAL SHEET NOTES

- DESIGN DOCUMENTED HEREIN IS BASED ON PRE-FABRICATED BUILDING PRELIMINARY LOADING. FINAL FOUNDATION SIZES TO BE DETERMINED.
- DATUM ELEVATION 0'-0" ON DRAWINGS CORRESPONDS TO ACTUAL SEA LEVEL ELEVATION OF +149.75', RE: CIVIL.
- REFER TO CMDN-OSD_STANDARD-DETAILS_S-80X SERIES SHEETS FOR ABBREVIATIONS, SYMBOLS, LEGENDS, AND GENERAL NOTES.
- REFER TO CMDN-OSD_STANDARD-DETAILS_S-81X SERIES SHEETS FOR TYPICAL DETAILS.
- REFER TO ARCHITECTURAL, MECHANICAL, ELECTRICAL, & PLUMBING SHEETS FOR SIZE AND LOCATION OF CONCRETE HOUSEKEEPING PADS, FLOOR PENETRATIONS, SLEEVES, DRAINS, RECESSES, AND CURBS.
- REFER TO ELECTRICAL FOR GROUNDING REQUIREMENTS AND DETAILS.
- REFER TO ARCHITECTURAL DRAWINGS FOR PRE-ENGINEERED METAL BUILDING HEIGHT AND GEOMETRY.
- COORDINATE DOOR OPENING LOCATIONS WITH ARCHITECTURAL DRAWINGS.
- CJ DENOTES SLAB ON GRADE CONTROL JOINT, RE: S-811.

#>SHEET KEYNOTES

- 6" THICK SLAB-ON-GRADE REINF WITH #4 @ 12" OC EW OVER 4" CAPILLARY BARRIER, TYP. T/SLAB EL = 0'-0".
- PRE-FABRICATED GUARD POST BUILDING, BY BUILDING MANUFACTURER.
- 6" THICK SLAB-ON-GRADE REINF WITH #4 @ 12" OC EW, OVER 15 MIL VAPOR RETARDER OVER 4" CAPILLARY BARRIER. TOP OF SLAB ELEV = 0'-0".

GRAPHIC SCALE(S)



Jacobs

1889 Bryan Street Suite 3500 Dallas, TX 75201
Tel: 214-638-0145 Fax: 214-638-0447
Entity: Jacobs Engineering Group Inc.
License: Professional Engineering
Exp. Date: 12/31/2024



Guard-Post
Camden OSD
Calhoun County, Arkansas
Aerojet Rocketdyne



Jacobs

STRUCTURAL
FOUNDATION PLAN

SHEET NO	
SB101	
SCALE	1/4" = 1'-0"
DATE	09/18/2024
PROJ	D3754502
DWG	CMDN-OSD_GuardPost_SB101

PLOT DATE/TIME: 9/18/2024 3:46:14 PM