

APPLICABLE CODES AND STANDARDS

THIS PROJECT IS DESIGNED IN ACCORDANCE WITH THE FOLLOWING CRITERIA AND OTHER PERTINENT DATA THAT ARE HEREIN INCORPORATED BY REFERENCE. THIS IS NOT A COMPLETE LIST, BUT INCLUDES THE MAJOR REFERENCES:

- ARKANSAS FIRE PREVENTION CODE VOLUME I, FIRE CODE, 2021 (2012 IFC WITH ARKANSAS AMENDMENTS)
- ARKANSAS FIRE PREVENTION CODE VOLUME II, BUILDING CODE, 2021 (2021 IBC WITH ARKANSAS AMENDMENTS)
- DOD CONTRACTORS SAFETY MANUAL FOR AMMUNITION AND EXPLOSIVES (4145.26) WITH CHANGE 2, AUGUST 31, 2018
- ARKANSAS ENERGY CODE, 2014 (2009 IECC WITH ARKANSAS AMENDMENTS)
- ARKANSAS NATIONAL ELECTRICAL CODE, 2020
- ARKANSAS PLUMBING CODE, 9TH EDITION, 2018
- INTERNATIONAL MECHANICAL CODE, 2021
- OSHA STANDARD 1910
- AMERICANS WITH DISABILITIES ACT (ADA), 2010
- FM: ALL BUILDING SYSTEMS MUST FOLLOW APPLICABLE FM GLOBAL DATA SHEETS
- DOD 4145.26-M, DOD CONTRACTORS SAFETY MANUAL FOR AMMUNITION AND EXPLOSIVES
- AEROJET ROCKETDYNE CORPORATE STANDARD FOR OFFICE SPACE
- AEROJET ROCKETDYNE CAMDEN SITE STANDARD FOR MANUFACTURERS AND PRODUCTS
- AEROJET ROCKETDYNE SPECIAL REQUIREMENTS FOR CLASSIFIED AREAS

CODE ANALYSIS (ALL CODE REFERENCES ARE FROM IBC 2021)

- | | |
|--|--|
| • TYPE OF CONSTRUCTION (602.2): | TYPE II-B
(NON-COMBUSTIBLE) |
| • FIRE PROTECTION: | SPRINKLER AND FIRE
ALARM NOT REQUIRED
PER IBC SECTION 903, 907 |
| • OCCUPANCY GROUP: | BUSINESS (B) |
| • OCCUPANCY SEPARATION (IBC 2021 TABLE 508.4): | NOT REQUIRED |

GENERAL HEIGHTS AND AREAS

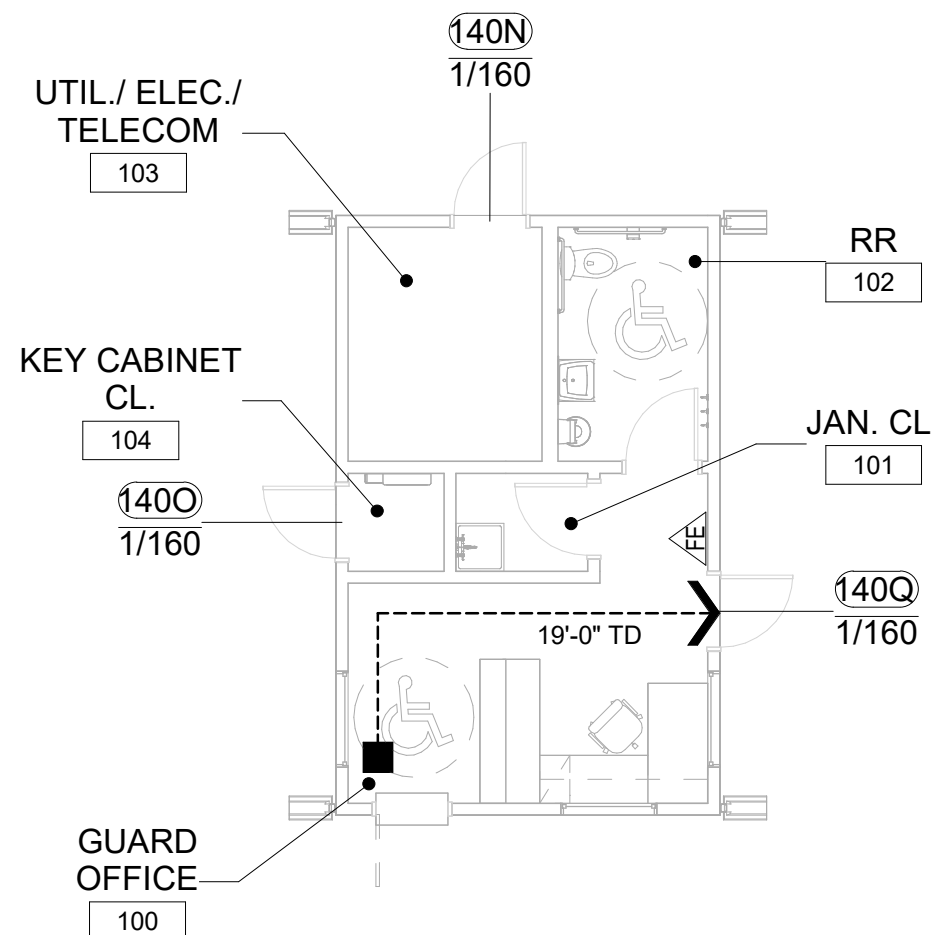
- | | | |
|---|---|---------------|
| • | NUMBER OF STORIES (ALLOWABLE PER TABLE 504.4): | 3 STORIES (B) |
| • | BUILDING HEIGHT LIMITATION (ALLOWABLE PER TABLE 504.3): | 55 FEET (B) |
| • | BUILDING AREA FACTOR (ALLOWABLE PER TABLE 506.2): | 23,000 SF (B) |
| • | NUMBER OF STORIES (ACTUAL): | 1 STORY |
| • | BUILDING HEIGHT (ACTUAL): | 14'-1" |
| • | BUILDING AREA (ACTUAL): | 557 SF |

MEANS OF EGRESS

- | | |
|---|--------------------------------|
| • COMMON PATH OF TRAVEL (TABLE 1006.2.1): | 100 FEET (B) |
| • EXIT ACCESS TRAVEL DISTANCE (TABLE 1017.2): | 200 FEET (B) |
| • CORRIDOR FIRE RESISTANCE RATING (TABLE 1020.2): | 1 HOUR |
| • MINIMUM CORRIDOR WIDTH (TABLE 1020.3): | 36 INCHES |
| • MINIMUM DOOR WIDTH (1010.1.1): | 32 INCHES |
| • EGRESS WIDTH PER OCCUPANT (1005.3.2): | 0.2 INCHES PER
OCCUPANT (B) |

OCCUPANT LOAD (IBC 2021 TABLE 1004.5)

- | | |
|--|-------------|
| • TOTAL OCCUPANTS BUSINESS (B) (CALCULATED): | |
| 360 GROSS SQUARE FEET / 150 GROSS SQUARE FEET= | 3 OCCUPANTS |
| BUILDING TOTAL (CALCULATED) | 3 OCCUPANTS |



A2

LIFE SAFETY PLAN

SCALE 1/8" = 1'-0"

FOR REFERENCE ONLY

GENERAL SHEET NOTES

- A. THE PURPOSE OF THIS DOCUMENT IS TO CONVEY BRIDGING DOCUMENTS TO THE DESIGN BUILD CONTRACTOR.
- B. THE FINAL PREFAB DESIGN MUST COMPLY WITH ALL LOCAL AND STATE CODES. WHERE CONFLICTS OCCUR, THE DESIGN MUST COMPLY WITH THE MOST STRINGENT REQUIREMENTS.
- C. REFER TO PREFAB DRAWINGS FOR EXIT SIGNS AT DOORS, EXIT LIGHTS AND EMERGENCY LIGHTING.
- D. PROVIDE ABC PORTABLE FIRE EXTINGUISHERS IN ACCORDANCE WITH IFC SECTION 906.

LIFE SAFETY

PATH OF EXIT TRAVEL WITH DISTANCES FROM SELECTED REMOTE LOCATIONS TO NEAREST EXIT. INCLUDES; TOTAL TRAVEL DISTANCE (TD)

146_TD_--■ INDICATES START OF TD

←----- INDICATES POINT OF EXIT

117 ROOM NUMBER

123B EXIT LOCATION (DOOR NUMBER)

10/160

TOTAL EXIT CAPACITY OF OPENING IN
NUMBER OF OCCUPANTS

CALCULATED QUANTITY OF OCCUPANTS
PER EXIT

 EXIT LIGHT FIXTURE, REFER TO ELECTRICAL DRAWINGS

—◆— 1 HOUR FIRE RATED PARTITION

—◆◆— 2 HOUR FIRE RATED PARTITION

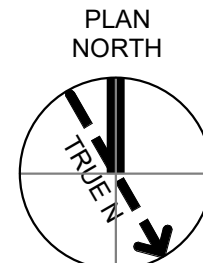
 FIRE EXTINGUISHER TYPE ABC

OCCUPANCY LEGEND

(NO PATTERN)

BUSINESS (B)

GRAPHIC SCALE(S)



SHEET NO

G-101

SCALE	As indicated
-------	--------------

DATE	09/18/2024
------	------------

PROJ	D3754502
------	----------

DWG CMON-OSD_Guard-Post_G-101

PLOT DATE/TIME: 9/17/2024 6:05:02 PM

9/17/2024 6:05:02 PM G-101 AutodesK Docs://US_D3754500_FED_Aerojet Rocketdyne/D37545N0_CMDN_OSD_Guard-Post_ARCH-INT.mt