

Branch Panel: LP1

Location: UTIL / ELEC / TELECOM...
Supply From: TRANSFER SWITCH
Mounting: Surface
Enclosure: Type 1

Volts: 208Y/120
Phases: 3
Wires: 4

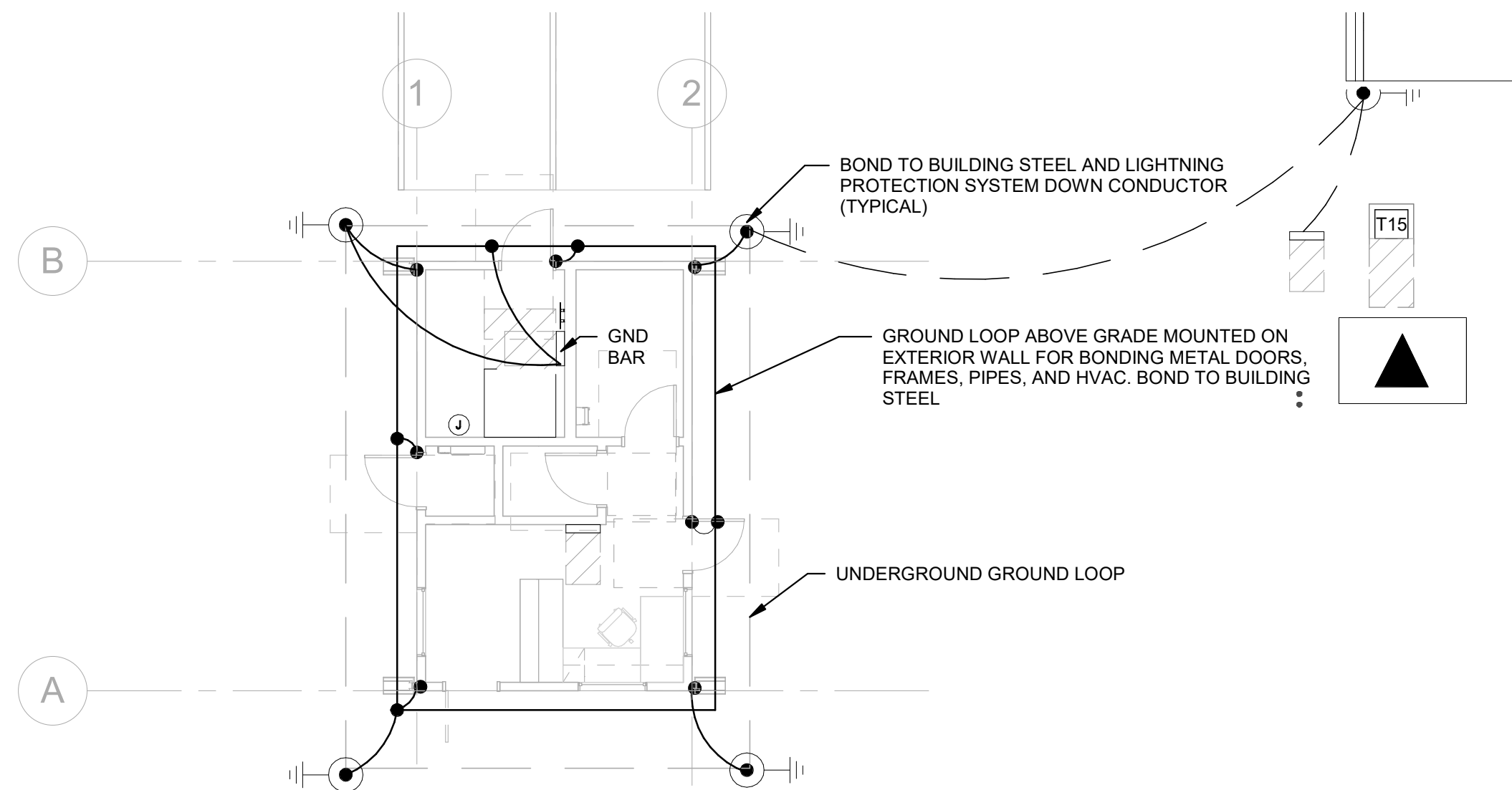
A.I.C. Rating: 10K
Mains Type: MCB
Mains Rating: 400 A
MCB Rating: 250 A

Notes:

CKT	Circuit Description	Trip	Poles	A	B	C	Poles	Trip	Circuit Description	CKT
1	ENTRY GATE	20 A	1	150... 0 VA	150... 0 VA		3	50 A	STORM SHELTER	2
3	EXIT GATE	20 A	1				--	--		4
5	REC RM 100	20 A	1			180... 0 VA	--	--	REC RM 100	6
7	REC RM 100	20 A	1	360... 360...			1	20 A	REC RM 100	8
9	REC - ACS	20 A	1		180... 360...		1	20 A	REC RM 101, 102	10
11	REC RM 103, 104	20 A	1			360... 360...	1	20 A	REC RM 100	12
13	LIGHTING - INTERIOR BY BLDG MFR	20 A	1	0 VA 500...			1	20 A	REC DATA CABINET	14
15	LIGHTING - EXTERIOR BY BLDG MFR	20 A	1		0 VA 0 VA		1	20 A	SPARE	16
17	SPARE	20 A	1			0 VA 0 VA	1	20 A	SPARE	18
19	SPARE	20 A	1	0 VA 0 VA			1	20 A	SPARE	20
21	SPARE	20 A	1		0 VA 0 VA		1	20 A	SPARE	22
23	SPARE	20 A	1			0 VA 0 VA	1	20 A	SPARE	24
25	SPARE	20 A	1	0 VA 0 VA			3	60 A	SPD	26
27	SPARE	20 A	1		0 VA 0 VA		--	--		28
29	SPARE	20 A	1			0 VA 0 VA	--	--		30
Total Load:		2720 VA			2040 VA	900 VA				
Total Amps:		24 A			18 A	8 A				

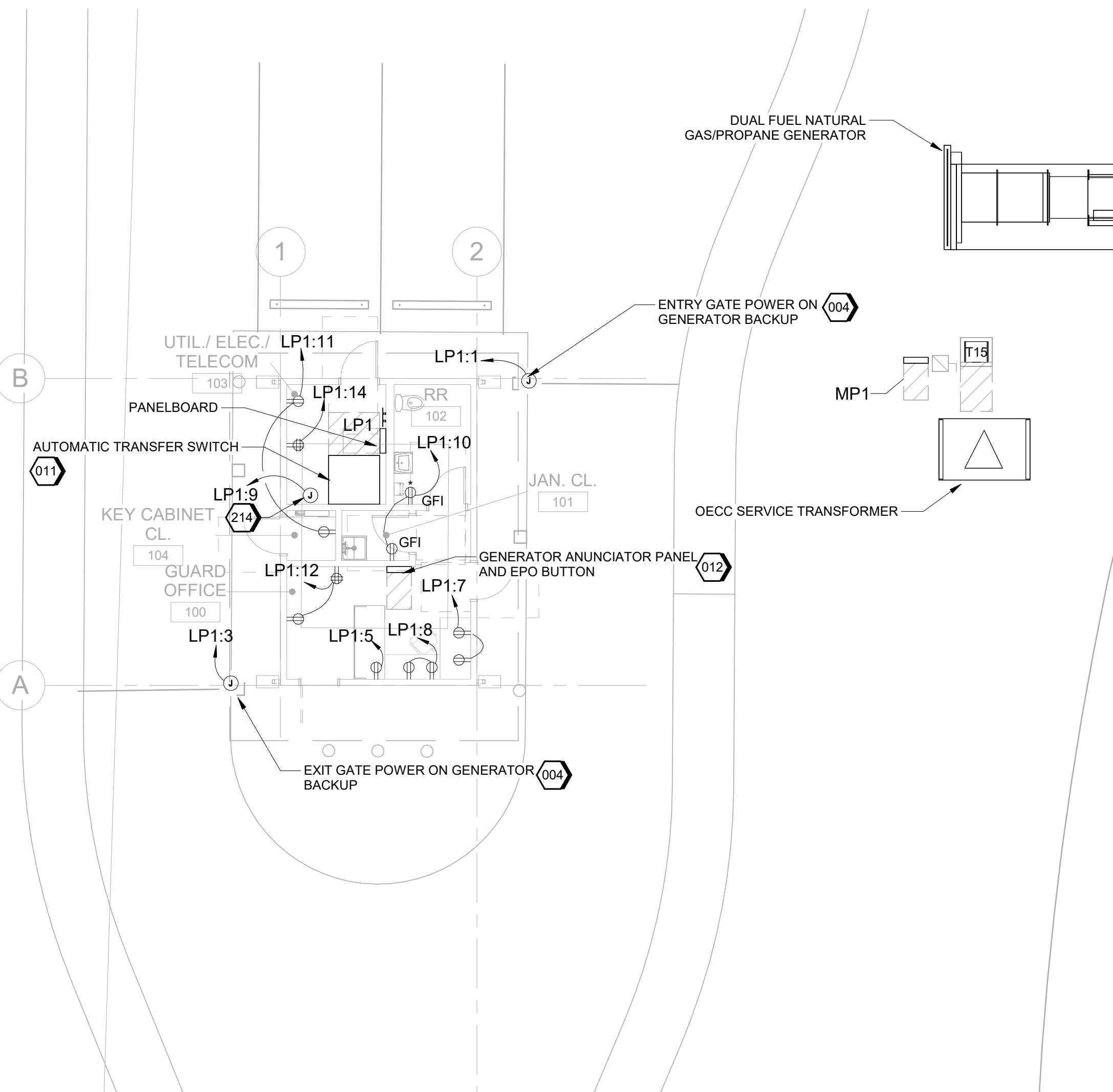
Legend:

Load Classification	Connected Load	Demand Factor	Estimated Demand	Panel Totals
REC	5660 VA	100.00%	5660 VA	
				Total Conn. Load: 5660 VA
				Total Est. Demand: 5660 VA
				Total Conn. Current: 16 A
				Total Est. Demand... 16 A



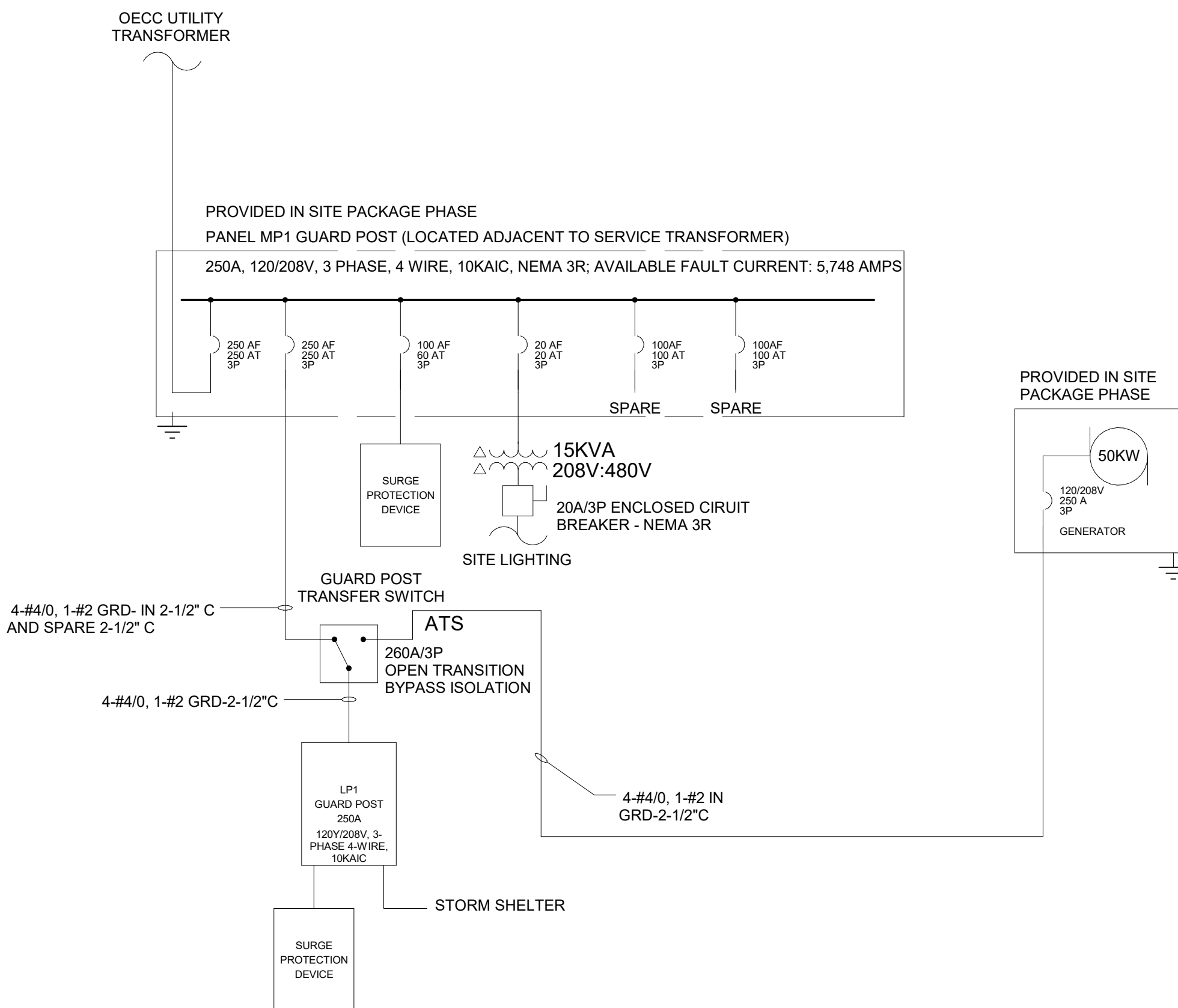
C3 GROUNDING PLAN

SCALE 1/8" = 1'-0"



A1 POWER PLAN

SCALE 1/8" = 1'-0"



A3 GUARD POST - ONE-LINE DIAGRAM

SCALE NTS

GENERAL SHEET NOTES

- A COORDINATE GROUND RING ROUTING WITH OTHER UTILITIES.
- B PROVIDE MAGNETIC TAPE OVER ALL BURIED GROUND CONDUCTORS.
- C PROVIDE BURIED GROUNDING CONNECTIONS WITH EXOTHERMIC WELDS.
- D DESIGN SHOWN IS DIAGRAMMATIC AND INTENDED TO SHOW THE GROUNDING ELECTRODE SYSTEM. VERIFY THE DIMENSIONS AND SITE CONDITIONS.
- E GROUND METALLIC PIPES AT TWO LOCATIONS USING AN APPROVED CLAMP WITHIN 5 FEET OF SERVICE ENTRANCE.
- F MAINTAIN RACEWAY ELECTRICAL CONTINUITY. METALLIC CONDUIT, SLEEVES, AND RACEWAYS SHALL NOT BE USED IN LIEU OF CIRCUIT EQUIPMENT GROUNDING CONDUCTORS.
- G BOND ALL METALLIC UNDERGROUND PIPING ENTERING THE STRUCTURE TO THE LIGHTNING PROTECTION SYSTEM AT ITS NEAREST POINT USING #6 AWG BARE CU.
- H PROVIDE LIGHTNING PROTECTION SYSTEM TO MEET NFPA 780 AND MASTER LABEL CERTIFICATION.
- J PROVIDE COPPER GROUND RING UNDERGROUND AROUND THE BUILDING BONDED TO THE LIGHTNING PROTECTION SYSTEM DOWN CONDUCTORS AND BUILDING STEEL. PROVIDE A GROUND RING ABOVE GRADE ATTACHED TO THE BUILDING ON INSULATORS AND BOND TO ALL METALLIC MATERIAL INCLUDED METAL BUILDING, DOOR FRAME, DOOR, HVAC EQUIPMENT, HVAC DUCTS, VENT PIPES.
- K REFER TO CIVIL SITE PLAN FOR BACKUP GENERATOR AND TRANSFORMER LOCATION.
- L PROVIDE PANEL NAMES WITH BUILDING NAME AS PREFIX. EX/ GP-LP1.
- M THE GUARD POST IS SCHEDULED AS A PREMANUFACTURED BUILDING. THE LIGHTING AND CONTROLS ARE PROVIDED BY THE PREMANUFACTURED BUILDING COMPANY. THE PANEL BOARD LP1 IS PROVIDED BY PREMANUFACTURED BUILDING COMPANY. COORDINATE BUILDING PENETRATIONS, CIRCUIT BREAKERS, AND RECEPTACLE LOCATIONS WITH BUILDING MANUFACTURER. COORDINATE EQUIPMENT INSTALLATION WITH BUILDING MANUFACTURER.

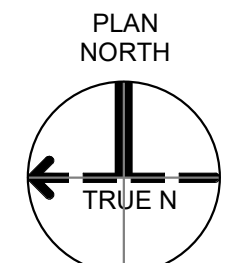
#) SHEET KEYNOTES

- 004 PROVIDE POWER AND CONTROLS FOR LIFT GATE ACCORDING TO MANUFACTURER REQUIREMENTS. COORDINATE GATE CIRCUIT BREAKER, DISCONNECT, AND CONDUCTOR SIZE REQUIREMENTS WITH GATE MANUFACTURER.
- 011 PROVIDE AUTOMATIC TRANSFER SWITCH AND INSTALL ACCORDING TO MANUFACTURER REQUIREMENTS. NOT PROVIDED BY BUILDING MANUFACTURER. COORDINATE INSTALLATION WITH BUILDING MANUFACTURER.
- 012 PROVIDE GENERATOR ANUNCIATOR PANEL AND EMERGENCY POWER OFF BUTTON. NOT PROVIDED BY BUILDING MANUFACTURER. COORDINATE INSTALLATION WITH BUILDING MANUFACTURER.
- 214 PROVIDE 120VAC/20A HARDWIRED CIRCUIT IN 4X4X2-1/8 SCREW COVER BOX AT 18\"/>

LIGHTING REQUIREMENTS

ROOM	FOOT-CANDLE LEVEL/FIXTURE TYPE/CONTROLS
GUARD OFFICE 100	30 FOOT-CANDLES/ DIRECT-NDIRECT LIGHTING/ DIMMING-OCCUPANCY CONTROL
JANITOR CL 101	10 FOOT-CANDLES/ LED LIGHTING/ VACANCY SENSOR
KEY CL 104	10 FOOT-CANDLES/ LED LIGHTING/ VACANCY SENSOR
RR TOILET 102	10 FOOT-CANDLES/ LED LIGHTING/ OCCUPANCY SENSOR
UTILITY/ELEC/TEL COM 103	50 FOOT-CANDLES/ INDUSTRIAL LED/ SINGLE POLE SWITCH

GRAPHIC SCALE(S)



JACOBS

1888 Bryan Street Suite 500 Dallas, TX 75201
Tel: 214-638-0145 Fax: 214-638-0447
Entry: Jacobs Engineering Group Inc.
License: Professional Engineering
Exp. Date: 12/31/2024

STATE OF ARKANSAS
REGISTERED PROFESSIONAL ENGINEER
No. 12803
J. Walker
09-18-2024

Guard-Post
Camden OSD
Calhoun County, Arkansas
Aerojet Rocketdyne

JACOBS

ELECTRICAL
POWER PLAN, GROUNDING PLAN,
SCHEDULE AND ONE-LINE DIAGRAM

SHEET NO
EP101

SCALE As indicated
DATE 09/18/2024
PROJ D3754502
DWG C:\DWG\OSD_GuardPost_EP101

PLOT DATE/TIME: 9/16/2024 9:26:30 AM