

1

2

3

4

5

SPRINKLER DESIGN CRITERIA

HATCH	NFPA 13 HAZARD CATEGORY	FM LPDS 3-26 HAZARD CATEGORY	SYSTEM TYPE	CEILING HEIGHT UP TO 30'-0"	CEILING HEIGHT 30'-0" - 45'-0"	CEILING HEIGHT 45'-0" - 60'-0"	HOSE STREAM/ DURATION	K-FACTOR	REQUIRED SPRINKLER
	LIGHT HAZARD	HC-1	WET-PIPE	0.10 GPM/SF OVER THE MOST REMOTE 1,500 SF	0.20 GPM/SF OVER THE MOST REMOTE 2,500 SF	0.20 GPM/SF OVER THE MOST REMOTE 2,500 SF	250 GPM FOR 60 MINUTES	5.6	ORDINARY, QUICK-RESPONSE
	ORDINARY HAZARD	HC-2	WET-PIPE	0.20 GPM/SF OVER THE MOST REMOTE 2,500 SF	0.20 GPM/SF OVER THE MOST REMOTE 2,500 SF	0.20 GPM/SF OVER THE MOST REMOTE 2,500 SF	250 GPM FOR 60 MINUTES	8.0	INTERMEDIATE, QUICK RESPONSE
	EXTRA HAZARD	HC-3	WET-PIPE	0.30 GPM/SF OVER THE MOST REMOTE 2,500 SF	0.30 GPM/SF OVER THE MOST REMOTE 3,600 SF	0.50 GPM/SF OVER THE MOST REMOTE 3,000 SF	500 GPM FOR 60 MINUTES	11.2	INTERMEDIATE, STANDARD RESPONSE

NOTES:
1. CONTRACTOR TO REFER TO ARCHITECTURAL DRAWINGS FOR MAXIMUM ROOM HEIGHTS TO DETERMINE SPRINKLER DESIGN CRITERIA FOR EACH ROOM.
2. SPRINKLER DESIGN DENSITIES ARE TO BE DETERMINED FROM THE FM LPDS 3-26 HAZARD CATEGORY REQUIREMENTS.

SPECIALTY SYSTEM DESIGN CRITERIA

HATCH	SYSTEM TYPE	DESIGN TYPE	DESIGN DENSITY	AREA
	ULTRA HIGH-SPEED DELUGE	AREA APPLICATION	0.5 GPM/FT²	OVER HATCHED AREAS SHOWN ON PLANS

GENERAL SHEET NOTES

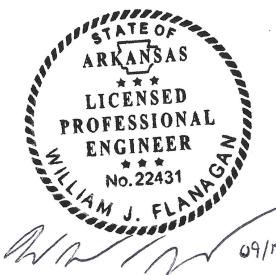
- REFER TO SHEET F-001 FOR GENERAL NOTES AND SYMBOLS.
- REFER TO SHEETS FX801 AND FX802 FOR FIRE PROTECTION DETAILS.
- PROVIDE SPRINKLER PROTECTION IN DUST COLLECTION SYSTEM PER FM LPDS 7-76.
- DELUGE SYSTEMS SHALL BE PROVIDED IN LOCATIONS WITH AN ELEVATED RISK OF DEFLAGRATION.
- THE DESIGN OF DELUGE SYSTEMS SHALL BE IN ACCORDANCE WITH THE REQUIREMENTS OF NFPA 15.

#SHEET KEYNOTES

- WET-PIPE SPRINKLER RISER LOCATION.
- PRELIMINARY DELUGE RISER LOCATION. FINAL LOCATION TO BE DETERMINED BY CONTRACTOR.
- PROVIDE WEATHERPROOF SPRINKLER BELL ON EXTERIOR WALL NEAR FIRE RISER.

Jacobs

1889 Bryan Street Suite 3500 Dallas, TX 75201
Tel: 214-638-0145 Fax: 214-638-0447
Entity: Jacobs Engineering Group Inc.
License: Professional Engineering
Exp. Date: 12/31/2024

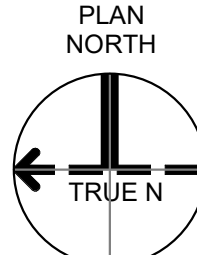


Mixer-Building-1
Camden OSD
Calhoun County, Arkansas
Aerojet Rocketdyne

Jacobs

FIRE PROTECTION
GROUND FLOOR PLAN

GRAPHIC SCALE(S)



SHEET NO	FX102
SCALE	As indicated
DATE	09/18/2024
PROJ	D3754502
DWG	Mixer-Building-1_FX102

PLOT DATE/TIME: 9/18/2024 1:51:06 PM

D

C

B

A

B

A

1

2

3

4

5

A1 GROUND FLOOR FIRE PROTECTION PLAN

SCALE 1/8" = 1'-0"

A3 SWECO MIX PLATFORM PLAN

SCALE 1/8" = 1'-0"