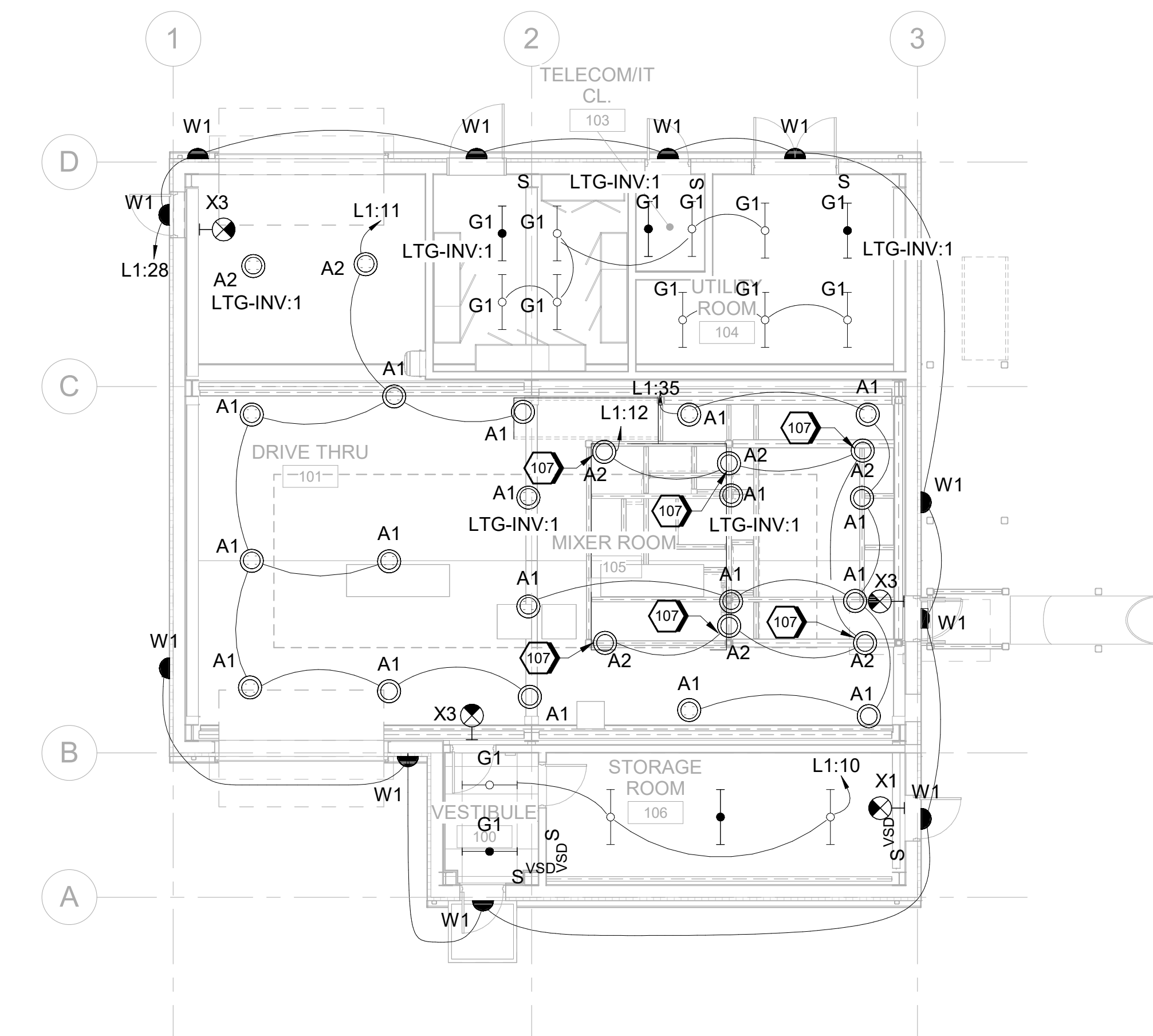


9/18/2024 10:42:18 AM
AutoDesk Docs/US D3754500_FED_Aerojet Rocketdyne/D3754500_CMDN_OSD_Mixer-Building-1_ELEC.vrt



A1 LIGHTING PLAN
SCALE 1/8" = 1'-0"

GENERAL SHEET NOTES

- A PROVIDE HAZARDOUS RATED CONSTRUCTION IN BAY AREA AS CLASS II DIVISION 1.
- B CIRCUIT EMERGENCY LIGHTING THROUGH THE LIGHTING INVERTER AND CONTROLLED THROUGH UL924 DEVICE TO ALLOW LIGHTING TO CONTROL WITH NORMAL LIGHTING. PROVIDE INTERFACE WITH FIRE ALARM CONTROL PANEL TO BRING ILLUMINATION TO 100% WHEN ALARMED.
- C PROVIDE CIRCUIT FOR EXIT SIGNS FROM UNSWITCHED LIGHTING INVERTER CIRCUIT. COORDINATE LOCATION AND MOUNTING TO MAINTAIN MAXIMUM VISIBILITY.
- D COORDINATE LIGHT FIXTURES WITH STRUCTURAL, MECHANICAL EQUIPMENT, DUCTS, CABLETRAY, AND PIPES FOR OPTIMAL LIGHT OUTPUT. RELOCATE LUMINAIRES AS NEEDED TO MAXIMIZE FOOT-CANDLE LEVELS. PERFORM LIGHTING CALCULATIONS AND TAKE FOOT-CANDLE READINGS AFTER INSTALLATION.
- E PROVIDE EXTERIOR LIGHTING WITH PHOTOCELL AND MOTION SENSOR TO DIM TO 50%.

#SHEET KEYNOTES

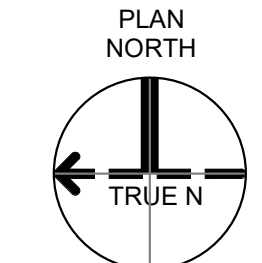
- 107 MOUNT FIXTURE TO UNDERSIDE OF EQUIPMENT PLATFORM.



Mixer-Building-1
Camden OSD
Calhoun County, Arkansas
Aerojet Rocketdyne

ELECTRICAL
LIGHTING PLAN

GRAPHIC SCALE(S)



SHEET NO		EL101
SCALE	1/8" = 1'-0"	
DATE	09/18/2024	
PROJ	D3754502	
DWG	CMDN OSD_Mixer-Building-1_EL101	

PLOT DATE/TIME: 9/18/2024 10:42:18 AM