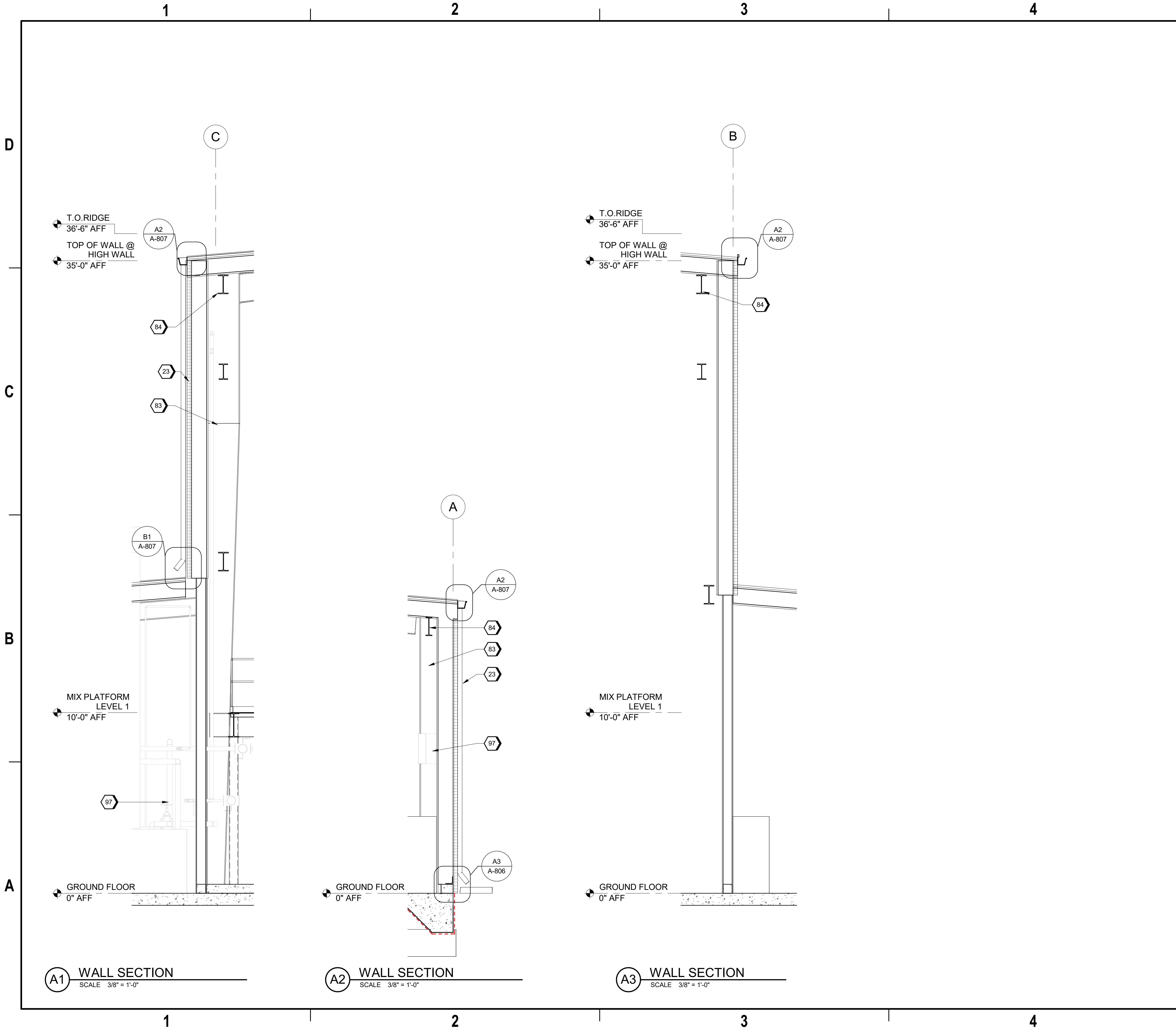


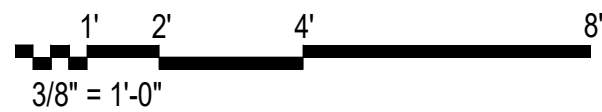
9/18/2024 9:53:37 AM A-312  
Autodesk Docs/US\_D3754500\_FED\_Aerojet Rocketdyne/D3754500\_CIMDN\_OSD\_Mixer-Building-1\_ARCH-INT.rvt



- GENERAL SHEET NOTES**
- A. FINISHED FLOOR ELEVATION 0'-0" IS A REFERENCE ELEVATION FOR COORDINATION WITH BUILDING ELEMENTS. ACTUAL ELEVATION IS INDICATED ON CIVIL DRAWINGS.
  - B. FOR ARCHITECTURAL GENERAL NOTES, SYMBOLS, AND LEGEND, REFER TO SHEET G-003.
  - C. FOR CAMPUS WIDE DETAILS, INCLUDING EXTERIOR ASSEMBLIES, REFER TO A-500 SERIES SHEETS.
  - D. FOR BUILDING CODE DATA AND LIFE SAFETY PLAN, REFER TO DRAWING G-101.
  - E. FOR FURNITURE AND EQUIPMENT, REFER TO EQUIPMENT PLANS SHEET A-151.

- #SHEET KEYNOTES**
- 23 PEMB: SHEET METAL DOWNSPOUT AND BRACKETS - TYP. 5" DIAMETER. COLOR TO MATCH THE BUILDING
  - 83 PEMB STL COLUMN - TYPICAL
  - 84 PEMB STL BEAM - TYPICAL
  - 97 MECHANICAL EQUIPMENT - TYPICAL

**GRAPHIC SCALE(S)**



100% ISSUED FOR CONSTRUCTION - EXPANSION		IE	TM
REVISION		BY	APVD
NO.	DATE	DR	NDYA
DSGN	IE	CHK	BH
TM		TM	

**Jacobs**  
1889 Bryan Street Suite 3500 Dallas, TX 75201  
Tel: 214-638-0145 Fax: 214-638-0447  
Entity: Jacobs Consultants Inc.  
License: Professional Engineer  
Exp. Date: 01/31/2025

**REGISTERED ARCHITECT**  
CHRIS ALFSTAD  
912327  
STATE OF ARKANSAS  
09/18/2024

**Jacobs** **ARCHITECTURE**  
ARCHITECTURE  
WALL SECTIONS

Mixer 1  
Camden OSD  
Calhoun County, Arkansas  
Aerojet Rocketdyne

SHEET NO  
A-312

SCALE As indicated  
DATE 09/18/2024  
PROJ D3754502  
DWG CIMDN-OSD\_Mixer-Building-1\_A-312

PLOT DATE/TIME: 9/18/2024 9:53:37 AM