

## APPLICABLE CODES AND STANDARDS

THIS PROJECT IS DESIGNED IN ACCORDANCE WITH THE FOLLOWING CRITERIA AND OTHER PERTINENT DATA THAT ARE HEREIN INCORPORATED BY REFERENCE. THIS IS NOT A COMPLETE LIST, BUT INCLUDES THE MAJOR REFERENCES:

- ARKANSAS FIRE PREVENTION CODE VOLUME I, FIRE CODE, 2021 (2021 IFC WITH ARKANSAS AMENDMENTS)
- ARKANSAS FIRE PREVENTION CODE VOLUME II, BUILDING CODE, 2021 (2021 IBC WITH ARKANSAS AMENDMENTS)
- DOD CONTRACTORS SAFETY MANUAL FOR AMMUNITION AND EXPLOSIVES (4145.26) WITH CHANGE 2, AUGUST 31, 2018
- ARKANSAS ENERGY CODE, 2014 (2009 IECC WITH ARKANSAS AMENDMENTS)
- ARKANSAS NATIONAL ELECTRICAL CODE, 2020
- ARKANSAS PLUMBING CODE, 9TH EDITION, 2018
- INTERNATIONAL MECHANICAL CODE, 2021
- OSHA STANDARD 1910
- FM: ALL BUILDING SYSTEMS MUST FOLLOW APPLICABLE FM GLOBAL DATA SHEETS
- DOD 4145.26-M, DOD CONTRACTORS SAFETY MANUAL FOR AMMUNITION AND EXPLOSIVES
- AEROJET ROCKETDYNE CORPORATE STANDARD FOR OFFICE SPACE
- AEROJET ROCKETDYNE CAMDEN SITE STANDARD FOR MANUFACTURERS AND PRODUCTS
- AEROJET ROCKETDYNE SPECIAL REQUIREMENTS FOR CLASSIFIED AREAS

**CODE ANALYSIS** (ALL CODE REFERENCES ARE FROM IBC 2021)

- |   |   |
|---|---|
| • TYPE OF CONSTRUCTION (602.2):                 | TYPE II-B<br>(NON-COMBUSTIBLE)                          |
| • FIRE PROTECTION:                              | AUTOMATIC SPRINKLER<br>SYSTEM WITH FIRE ALARM<br>SYSTEM |
| • OCCUPANCY GROUP (MIXED):                      | HIGH HAZARD (H-1),<br>LOW-HAZARD STORAGE (S-2)          |
| • OCCUPANCY SEPARATION ( IBC 2021 TABLE 508.4): | NON- SEPARATED  |

### GENERAL HEIGHTS AND AREAS

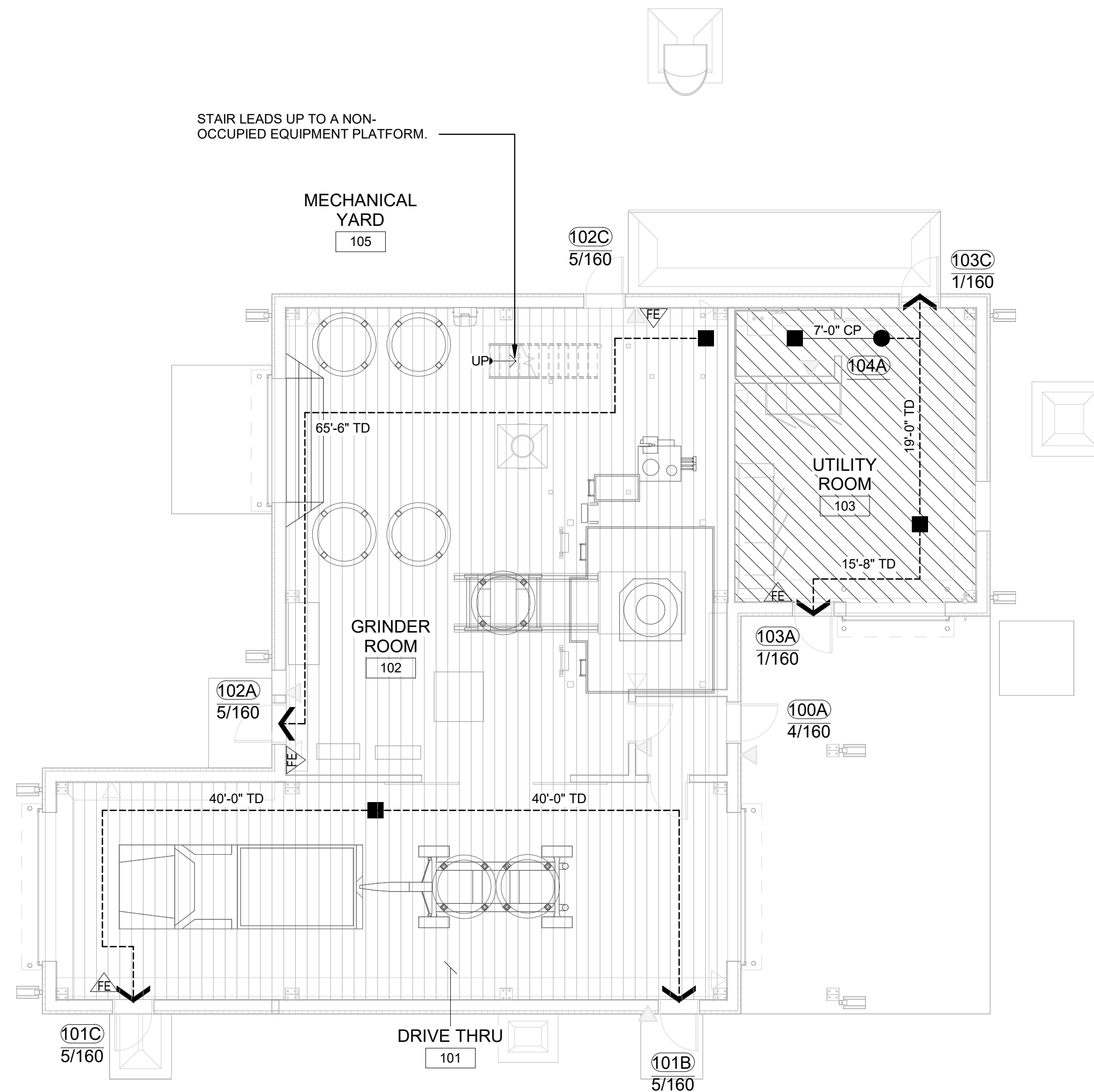
- |   |                |
|---|----------------|
| • NUMBER OF STORIES (ALLOWABLE PER TABLE 504.4):          | 1 STORY (H-1)  |
| • BUILDING HEIGHT LIMITATION (ALLOWABLE PER TABLE 504.3): | 55 FEET (H-1)  |
| • BUILDING AREA FACTOR (ALLOWABLE PER TABLE 506.2):       | 7,000 SF (H-1) |
| • NUMBER OF STORIES (ACTUAL):                             | 1 STORY        |
| • BUILDING HEIGHT (ACTUAL):                               | 36'-6"         |
| • BUILDING AREA (ACTUAL):                                 | 2,774 SF       |

MEANS OF EGRESS

- |   |                                  |
|---|----------------------------------|
| • COMMON PATH OF TRAVEL (TABLE 1006.2.1):         | 25 FEET (H-1)                    |
| • EXIT ACCESS TRAVEL DISTANCE (TABLE 1017.2):     | 75 FEET (H-1)                    |
| • DEAD-END CORRIDOR (1020.5):                     | 20 FEET (H-1)                    |
| • CORRIDOR FIRE RESISTANCE RATING (TABLE 1020.2): | 1 HOUR (H-1)                     |
| • MINIMUM CORRIDOR WIDTH (TABLE 1020.3):          | 36 INCHES                        |
| • MINIMUM DOOR WIDTH (1010.1.1):                  | 32 INCHES                        |
| • EGRESS WIDTH PER OCCUPANT (1005.3.2):           | 0.2 INCHES PER<br>OCCUPANT (H-1) |

OCCUPANT LOAD ( IBC 2021 TABLE 1004.5)

- TOTAL OCCUPANTS HAZARD (H-1) (CALCULATED):  
2,304 GROSS SQUARE FEET / 100 GROSS SQUARE FEET= 24 OCCUPANTS
- TOTAL OCCUPANTS LOW HAZARD STORAGE (S-2) (CALCULATED):  
463 GROSS SQUARE FEET / 300 GROSS SQUARE FEET= 2 OCCUPANTS  
BUILDING TOTAL (CALCULATED) 26 OCCUPANTS

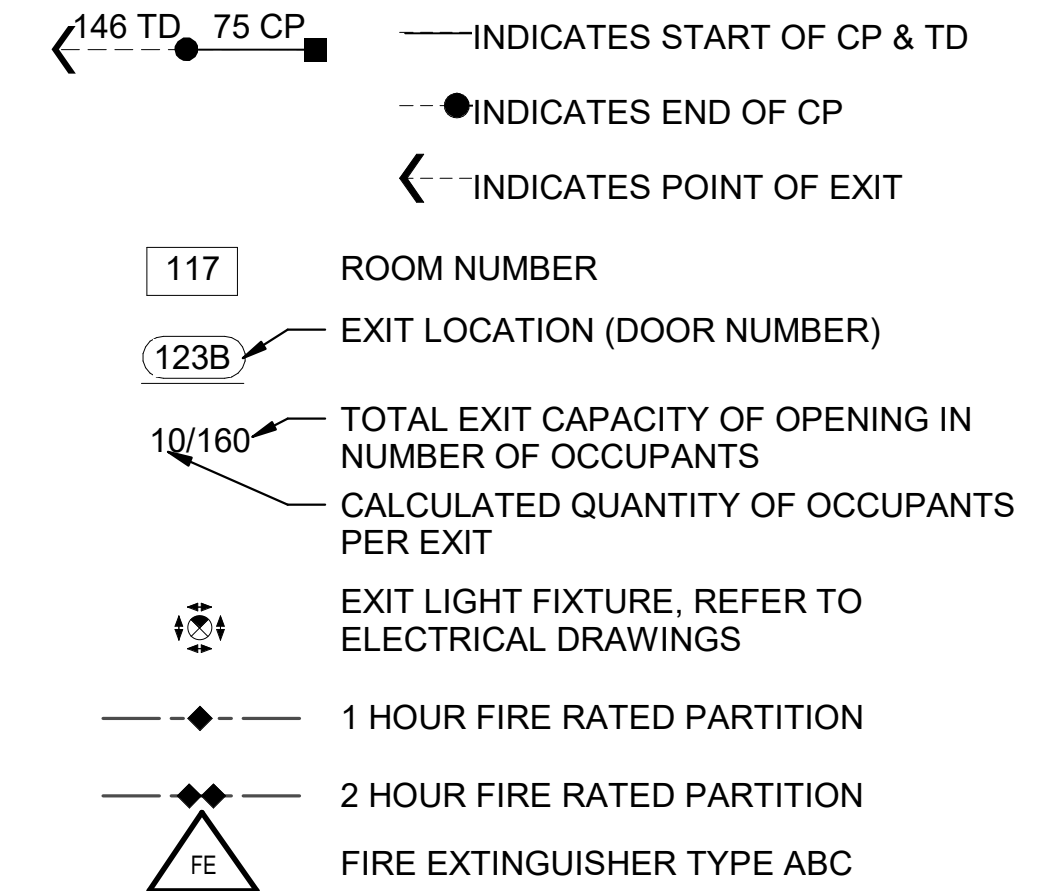


## GENERAL SHEET NOTES



- A. THE PURPOSE OF THIS DOCUMENT IS TO CONVEY BRIDGING DOCUMENTS TO THE DESIGN BUILD CONTRACTOR.
- B. THE DESIGN MUST COMPLY WITH ALL LOCAL AND STATE CODES. WHERE CONFLICTS OCCUR, THE DESIGN MUST COMPLY WITH THE MOST STRINGENT REQUIREMENTS.
- C. REFER TO FIRE PROTECTION DRAWINGS FOR ALARM AND SPRINKLER SYSTEM.
- D. REFER TO ELECTRICAL DRAWINGS FOR EXIT SIGNS AT DOORS, EXIT LIGHTS AND EMERGENCY LIGHTING.
- E. PROVIDE ABC PORTABLE FIRE EXTINGUISHERS IN ACCORDANCE WITH IFC SECTION 906.

## LIFE SAFETY

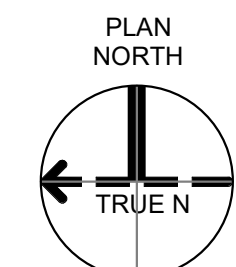
PATH OF EXIT TRAVEL WITH DISTANCES FROM SELECTED REMOTE LOCATIONS TO NEAREST EXIT. INCLUDES: TOTAL TRAVEL DISTANCE (TD) AND COMMON PATH OF TRAVEL(CP).



## OCCUPANCY LEGEND

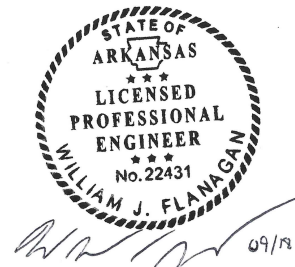
	HIGH HAZARD (H-1)
	LOW HAZARD STORAGE (S-2)

**GRAPHIC SCALE(S)**



PLOT DATE/TIME: 9/18/2024 11:23:02 AM

**Jacobs**  
999 Bryan Street Suite 3500 Dallas, TX 75201  
Tel: 214-638-0145 Fax: 214-638-0447  
Entity: Jacobs Consultants Inc.



Grinder  
Camden OSD  
Calhoun County, Arkansas  
Aerojet Rocketdyne

**Jacobs**  **NABHOLZ**

GENERAL  
LIFE SAFETY PLAN AND CODE  
REQUIREMENTS

SHEET NO

G-101

SCALE	As indicated
DATE	09/18/2024
PROJ	D3754502
DWG	CMDN-OSO_Gender_G-101

THIS DOCUMENT, AND THE IDEAS AND DESIGNS INCORPORATED HEREIN, AS AN INSTRUMENT OF PROFESSIONAL SERVICE, IS THE PROPERTY OF JACOBS AND IS NOT TO BE USED IN WHOLE OR IN PART FOR ANY OTHER PROJECT WITHOUT THE WRITTEN AUTHORIZATION OF JACOBS.



1

**A**