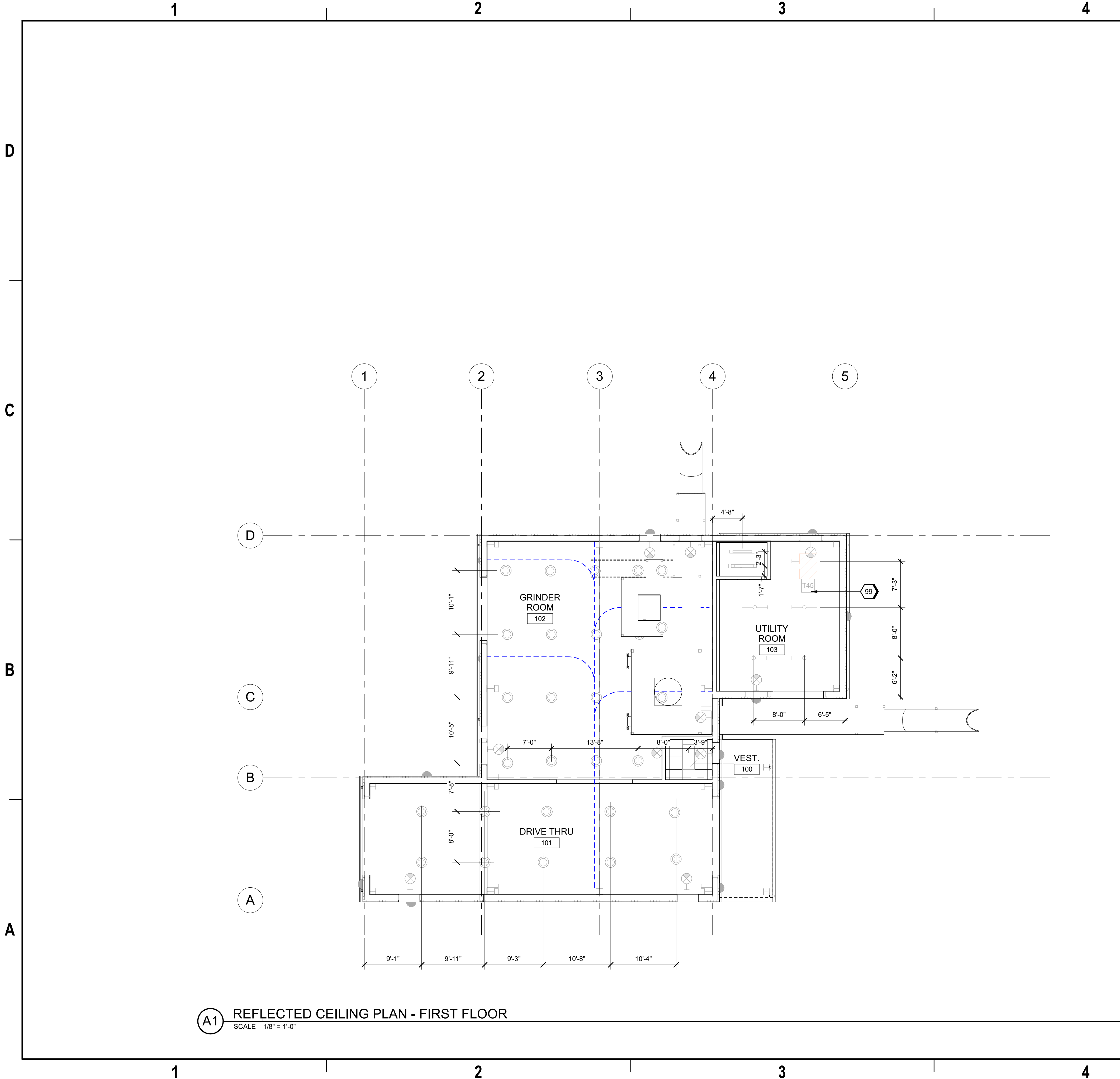


9/18/2024 9:31:00 AM AE121 Autodesk Docs://US_D0754500_FED_Aerojet Rocketdyne/D3754500_CMND_OSD_Grinder_ARCH-INT.rvt



A1 REFLECTED CEILING PLAN - FIRST FLOOR
SCALE 1/8" = 1'-0"

GENERAL SHEET NOTES

- A. FINISHED FLOOR ELEVATION 0'-0" IS A REFERENCE ELEVATION FOR COORDINATION WITH BUILDING ELEMENTS. ACTUAL ELEVATION IS INDICATED ON CIVIL DRAWINGS
- B. FOR ARCHITECTURAL GENERAL NOTES, SYMBOLS, AND LEGEND, REFER TO DRAWING G-002.
- C. FOR BUILDING CODE DATA AND LIFE SAFETY PLAN, REFER TO DRAWING G-101.
- D. REFER TO EQUIPMENT PLAN SHEET FOR FURNITURE AND EQUIPMENT.
- E. REFER TO ELECTRICAL FOR LIGHTING PROTECTION.

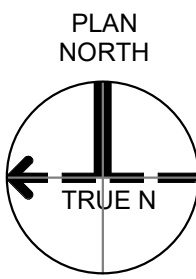
#SHEET KEYNOTES

99 ELECTRICAL EQUIPMENT - TYPICAL

REFLECTED CEILING PLAN LEGEND

- GYPSUM BOARD CEILING AS SCHEDULED
CONTROL JOINT
- 2'x2' ACOUSTICAL CEILING SYSTEM AS SCHEDULED CENTERED IN SPACE AS INDICATED
- LIGHT FIXTURE; REFER TO ELECTRICAL
- EXIT LIGHT FIXTURE; REFER TO ELECTRICAL
- SUPPLY AIR DIFFUSERS; REFER TO MECHANICAL
- RETURN AIR GRILLE; REFER TO MECHANICAL

GRAPHIC SCALE(S)



100% ISSUED FOR CONSTRUCTION - EXPANSION		IE	TM
REVISION		BY	APVD
0	DATE	DR	ND/YA
DSGN	CHK	BH	TM

Jacobs
1889 Bryan Street Suite 3500 Dallas, TX 75201
Tel: 214-638-0145 Fax: 214-638-0447
Entity: Jacobs Consultants Inc.
License: Professional Engineer
Exp. Date: 01/31/2025

REGISTERED ARCHITECT
CHRIS ALFSTAD
8123221
STATE OF ARKANSAS
09/18/2024
SEA

Grinder OSD
Camden OSD
Calhoun County, Arkansas
Aerojet Rocketdyne

Jacobs **ARCHITECTURE**
REFLECTED CEILING PLAN

SHEET NO
AE121

SCALE	As indicated
DATE	09/18/2024
PROJ	D3754502
DWG	CMND-OSD_Grinder_AE121

PLOT DATE/TIME: 9/18/2024 9:31:00 AM