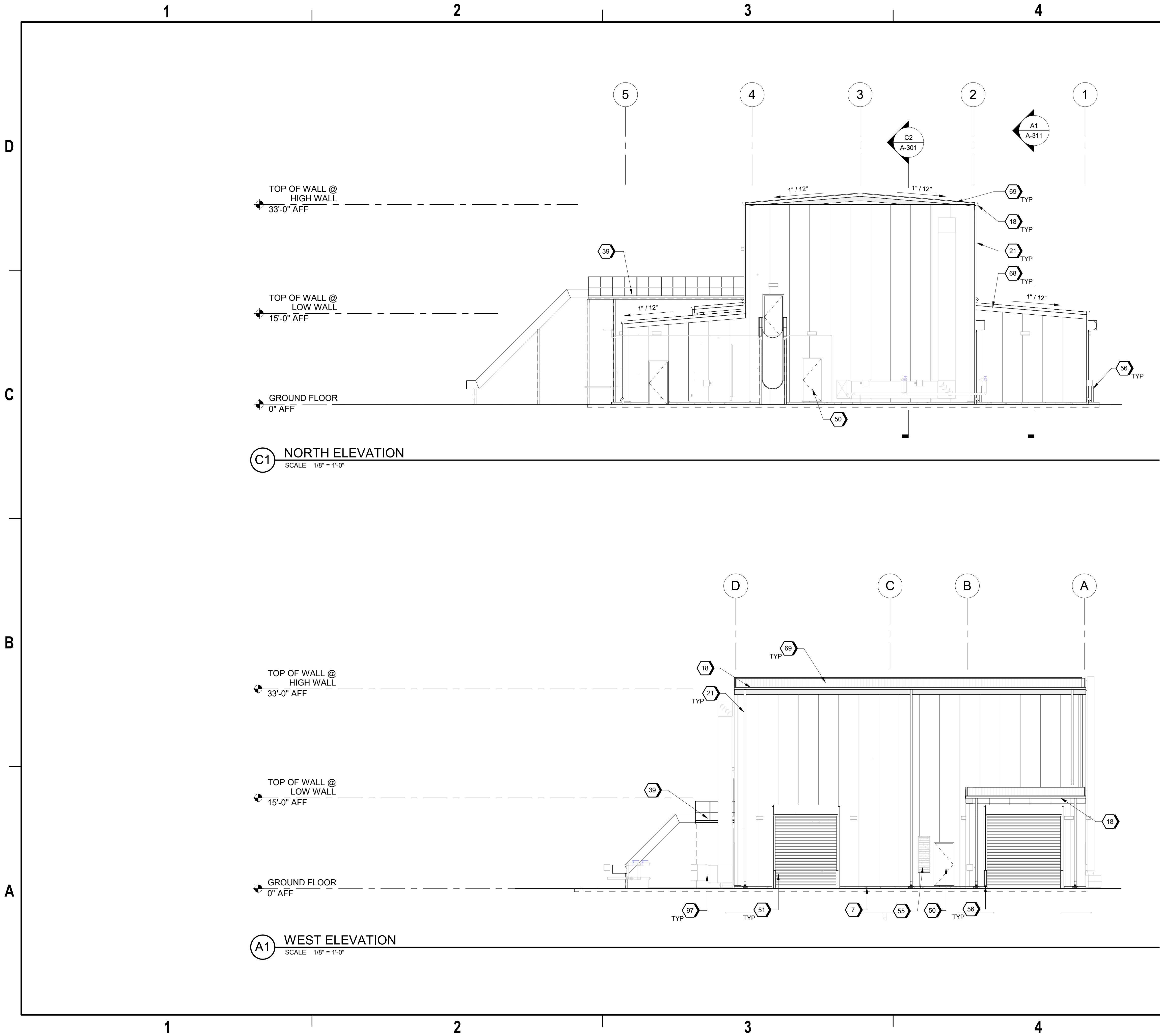


9/18/2024 9:31:05 AM A-203 Autodesk Docs://US_D3754502_FED_Aerojet Rocketdyne/D3754502_CIMDN_OSD_Grinder_ARCH-INT.rvt



SHEET KEYNOTES

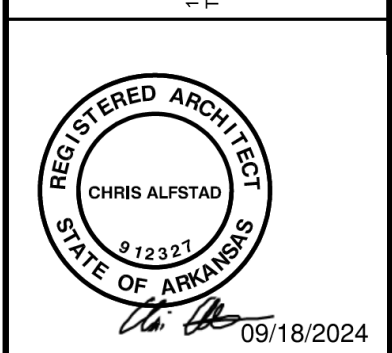
- 7 CONCRETE BASE
- 18 CONT. METAL GUTTER 5" DEEP X 6" WIDE. COLOR TO MATCH THE BUILDING
- 21 PEMB: SHEET METAL DOWNSPOUT AND BRACKETS -TYP. 5" DIAMETER. COLOR TO MATCH THE BUILDING
- 39 EMERGENCY ESCAPE PLATFORM
- 50 HM DOOR AND FRAME AS SCHEDULED
- 51 MOTORIZED INSULATED OVERHEAD COILING DOOR AS SCHEDULED
- 55 METAL LOUVER - TYPICAL
- 56 4'-0" x 6" DIA CONCRETE FILLED GALV STL PIPE BOLLARD, PAINTED SAFETY YELLOW
- 68 RP-1 - REFER TO CAMPUS DETAILS A-800
- 69 RP-3 - REFER TO CAMPUS DETAILS A-800
- 97 MECHANICAL EQUIPMENT - TYPICAL

GRAPHIC SCALE(S)



NO.	DATE	REVISION	CHK	BY	APVD	TM
0	09/18/2024	100% ISSUED FOR CONSTRUCTION - EXPANSION	IE	TM		

Jacobs
1889 Bryan Street Suite 500 Dallas, TX 75201
Tel: 214-638-0145 Fax: 214-638-0447
Entity: Jacobs Consultants Inc.
License: Professional Engineer
Exp. Date: 01/31/2025



Grinder
Camden OSD
Calhoun County, Arkansas
Aerojet Rocketdyne

Jacobs **ARCHITECTURE**
ARCHITECTURE
EXTERIOR ELEVATIONS

SHEET NO	A-203
SCALE	1/8" = 1'-0"
DATE	09/18/2024
PROJ	D3754502
DWG	CIMDN OSD_Grinder_A-203