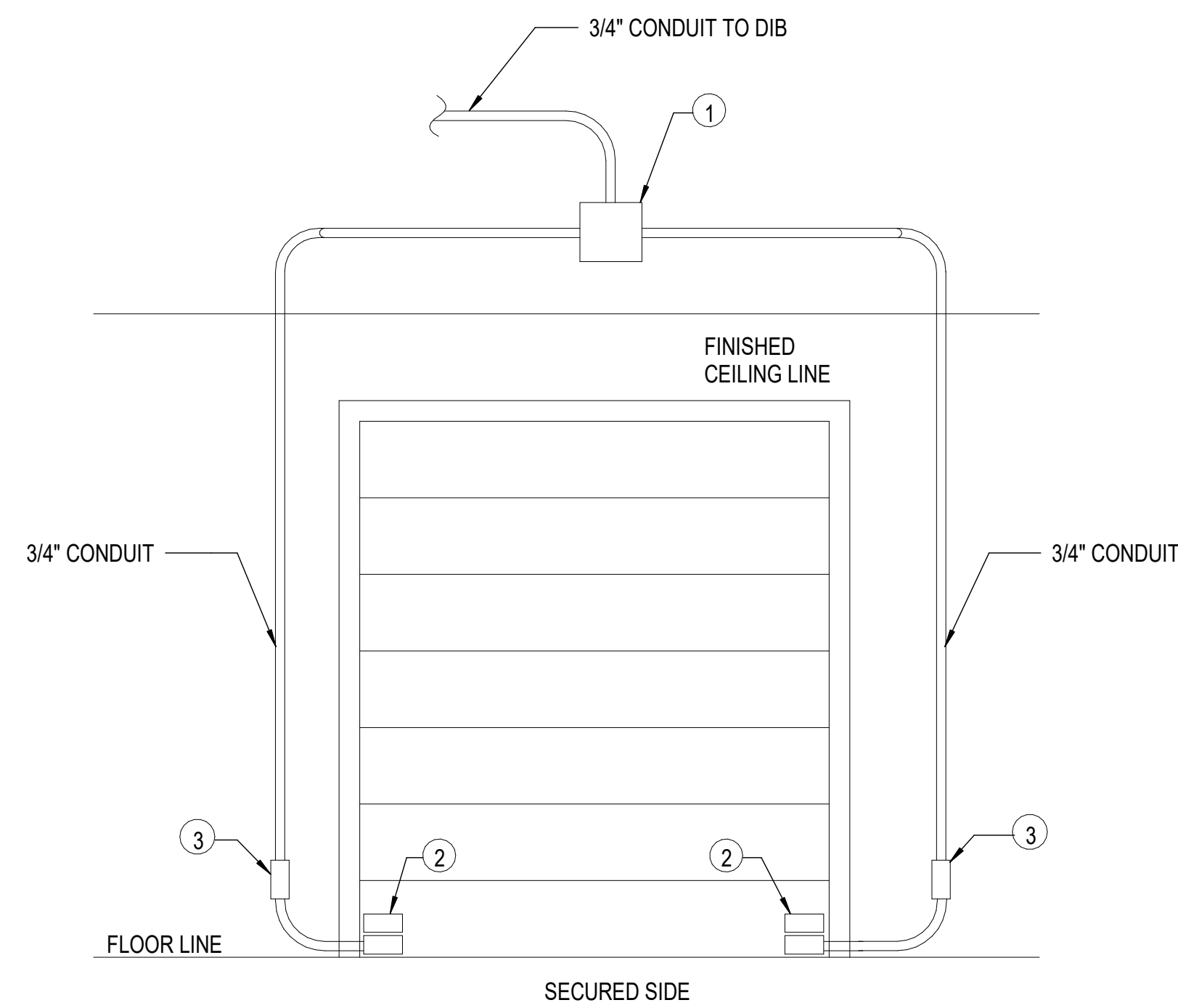


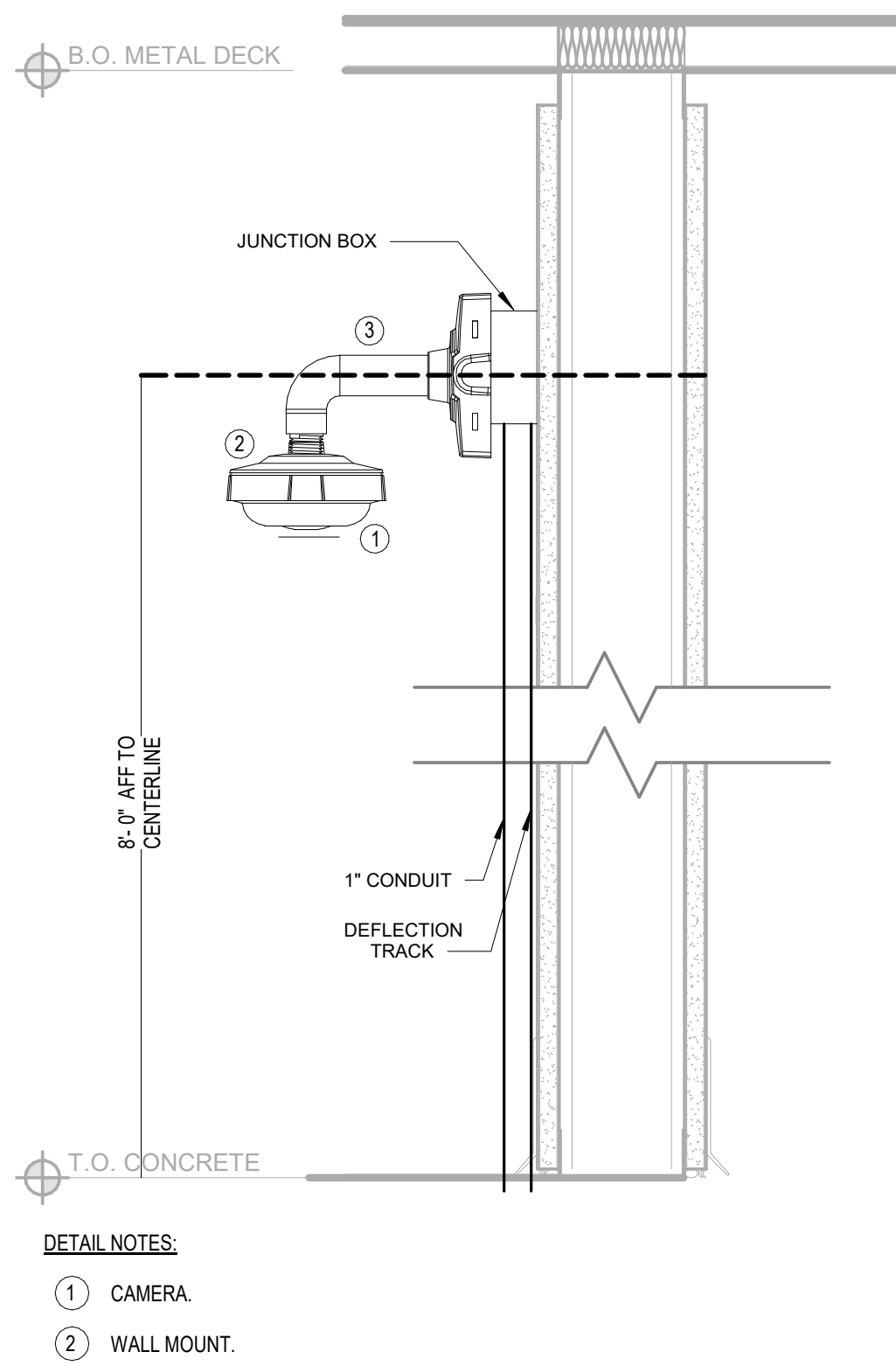
- 1 JUNCTION BOX
2 DOOR POSITION SWITCH (PROVIDED BY DIV.8)
3 24VDC ELECTRIFIED LOCKING HARDWARE (PROVIDED BY DIV.8)
4 HID RP40 CARD READER
5 SINGLE GANG BOX

C1 SINGLE DOOR WITH CARD READER
NTS



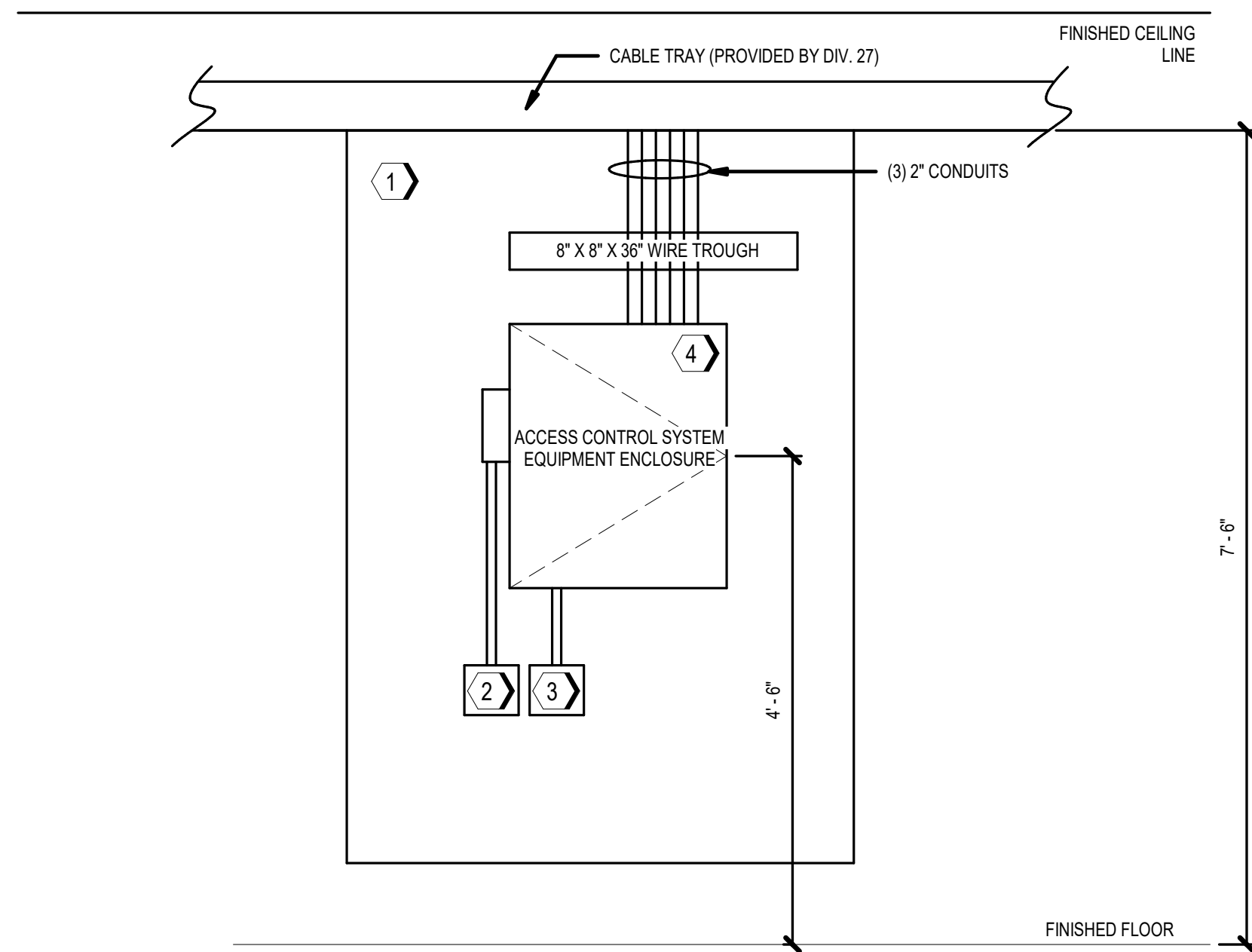
- 1 JUNCTION BOX
2 MAGNETIC CONTACT
3 SINGLE GANG BOX FOR CONNECTION OF BMS FLEX CONDUIT

A1 OVERHEAD DOOR INTRUSION DETECTION
NOT TO SCALE



- DETAIL NOTES:
1 CAMERA
2 WALL MOUNT
3 JUNCTION BOX

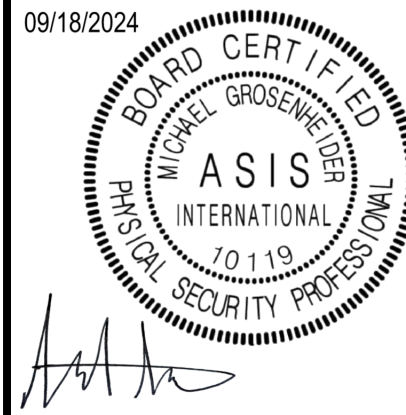
C3 WALL MOUNTED CAMERA
SCALE NTS



NOTES: (XX)

- PLYWOOD BACKBOARD, REFERENCE T SERIES COMMUNICATIONS SHEETS, TELECOMMUNICATION ROOM FLOOR PLANS. IF PANEL IS NOT LOCATED IN TELECOMMUNICATION ROOM, PROVIDE 48-INCH WIDE X 96-INCH HIGH X 3/4-INCH DEEP FIRE RATED PLYWOOD BACKBOARDS ON ENTIRE LENGTH OF THE WALL, MOUNTED 6-INCHES A.F.F. TO BOTTOM OF PLYWOOD BACKBOARD. (TYPICAL).
- PROVIDE 120VAC 20A HARDWIRED EMERGENCY POWER CIRCUIT IN 4-INCH HIGH X 4-INCH WIDE X 2 1/8-INCH DEEP SCREW COVER BACKBOX.
- PROVIDE INTERFACE TO FIRE ALARM SYSTEM TO UNLOC FAIL-SAFE DOORS UPON FIRE ALARM ACTIVATION IN ACCORDANCE WITH APPLICABLE LIFE SAFETY AND BUILDING CODES. PROVIDE INTERFACE IN 4-INCH HIGH X 4-INCH WIDE X 2 1/8-INCH DEEP SCREW COVER BACKBOX.
- PROVIDE MINIMUM 36-INCH HIGH X 30-INCH WIDE X 6 1/2-INCH DEEP 16 GAUGE POLYESTER POWDER COATED HINGED COVER, KEY LOCKABLE ENCLOSURE WITH TAMPER SWITCH. ENCLOSURE WILL INCLUDE DEVICE AND LOCK POWER SUPPLIES, LOCK POWER DISTRIBUTION UNITS WITH FIRE ALARM RELAY INPUT, ALUMINUM BACKPLANE WITH AC AND BATTERY SLOTS TO PROTECT CABLES. FRONT SIDE SCREW ON STANDOFFS TO SIMPLIFY PANEL INSTALLATION. WIRE MANAGEMENT CHANNELS FOR PANDUIT OR TIE WRAP, PROTECTED AC COVER WITH ON/OFF CIRCUIT BREAKER, REMOVABLE DOOR WITH QUICK DISCONNECT GROUND STRAP AND KNOCKOUTS ON ALL FOUR SIDES.

A3 TYPICAL ACP ENCLOSURE ELEVATION
SCALE NOT TO SCALE



Jacobs

1996 Bryan Street Suite 3000
Dallas, TX 75201
Phone: 214-868-8100
Fax: 214-868-8101
Email: jacobson@jacobs.com
License Type: Engineering License Exp. Date: 12/31/2024

NO.	DATE	REVISION	BY	CHK	DR	LTV	MAH	TM
0	09/18/2024	100% ISSUED FOR CONSTRUCTION - EXPANSION	BP	MT				
			APVD					

GMLRS
Camden OSD
Calhoun County, Arkansas
Aerojet Rocketdyne

ELECTRONIC SECURITY SYSTEM
INSTALLATION DETAILS

SHEET NO.	TY501
SCALE	As indicated
DATE	09/18/2024
PROJ	D3754502
DWG	0308-030, 0403, 1101