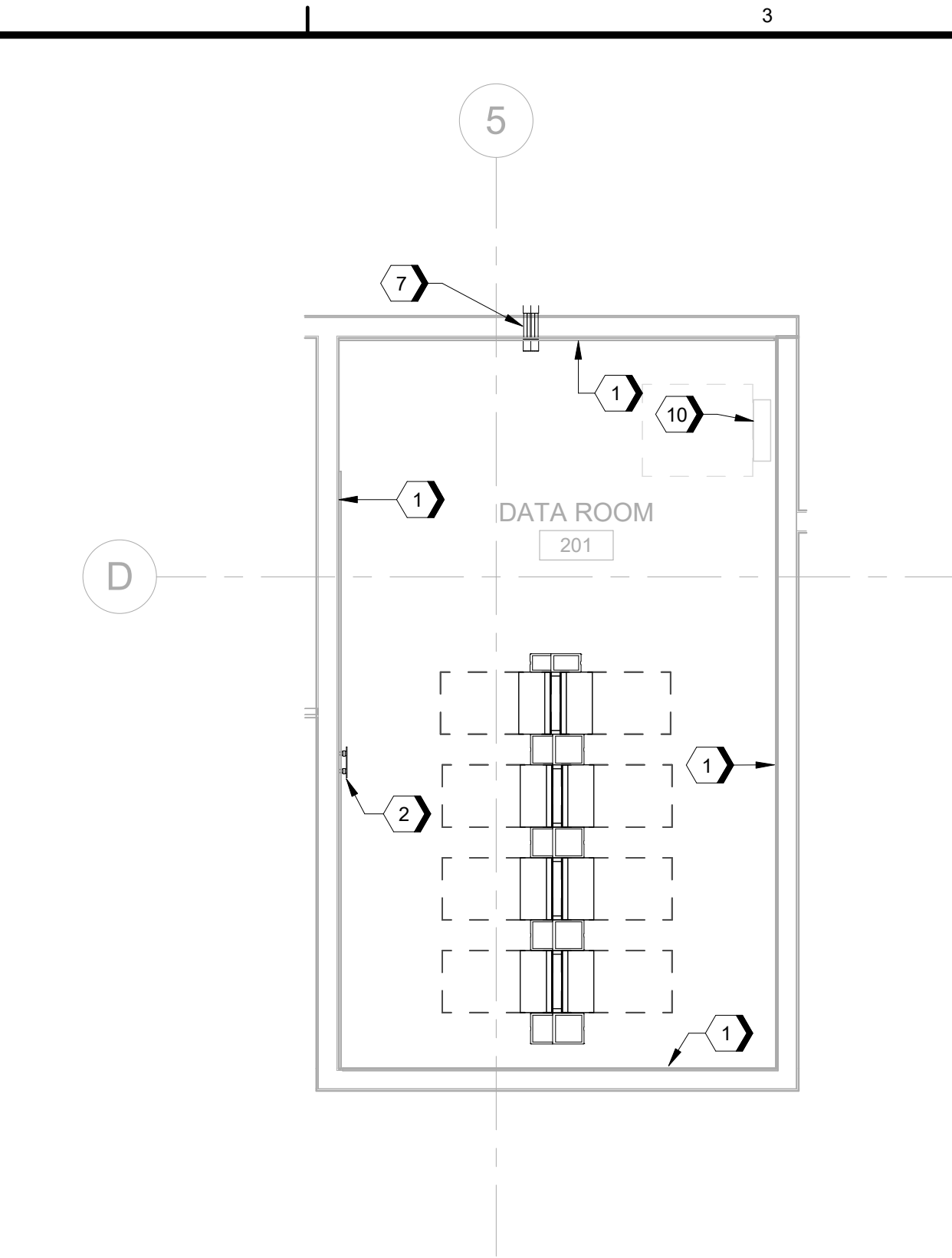
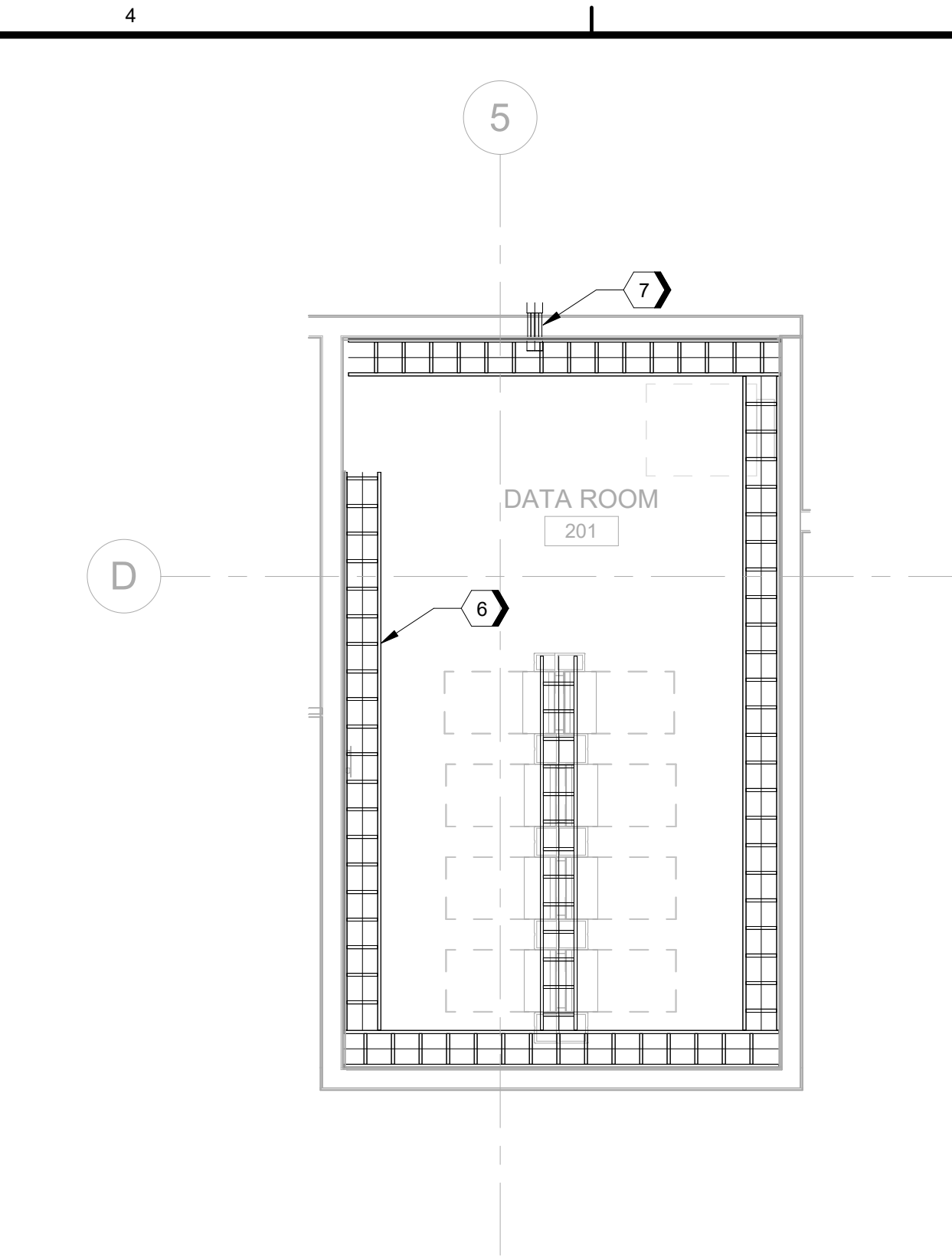


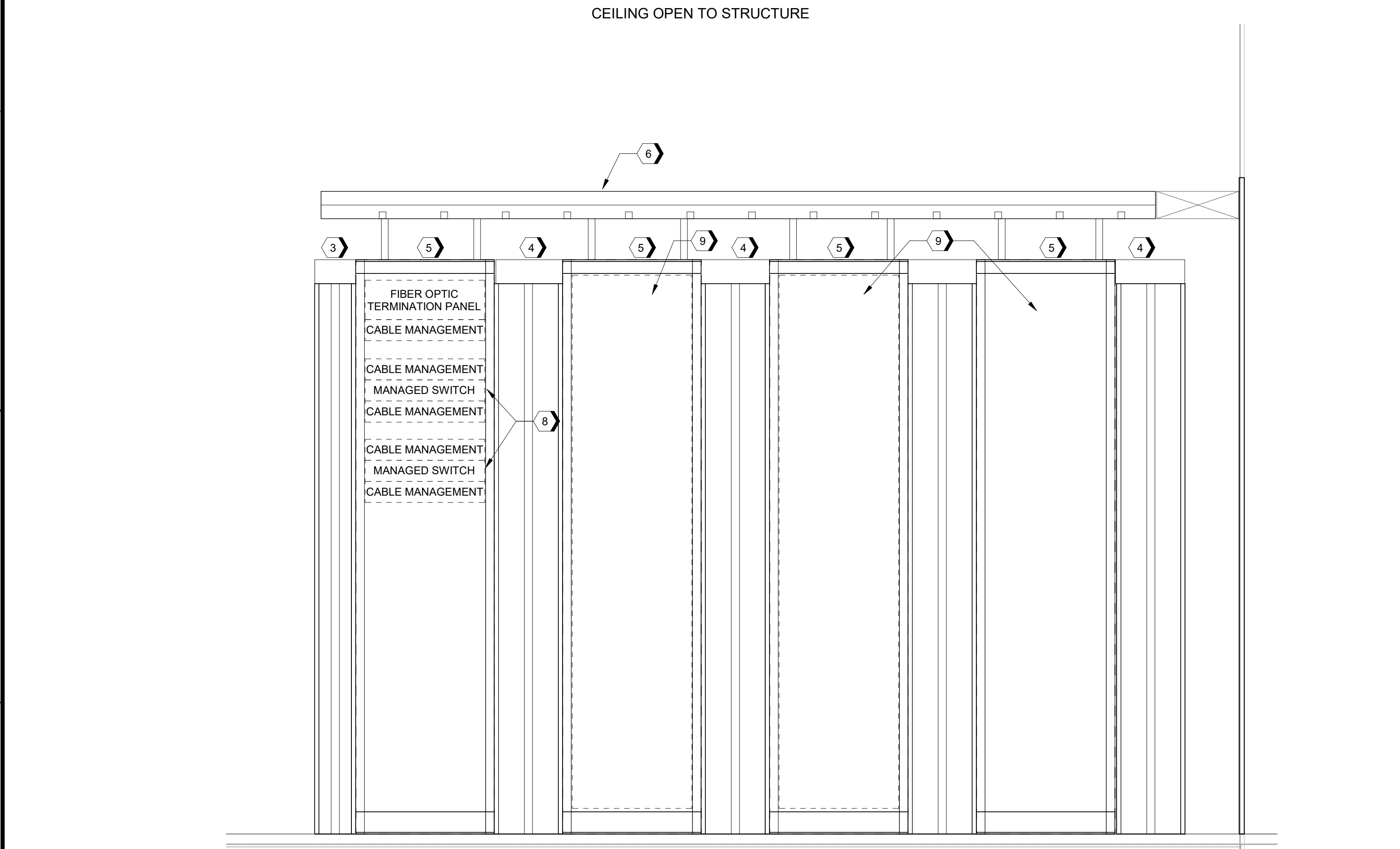
D1 MEZZANINE FLOOR TELECOMMUNICATIONS PLAN
SCALE 1/8" = 1'-0"



D2 ENLARGED TELECOM EQUIPMENT ROOM - DATA ROOM 201
SCALE 1/4" = 1'-0"



D4 ENLARGED TELECOM ROOM LADDER TRAY - DATA ROOM 201
SCALE 1/4" = 1'-0"

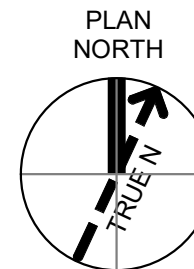
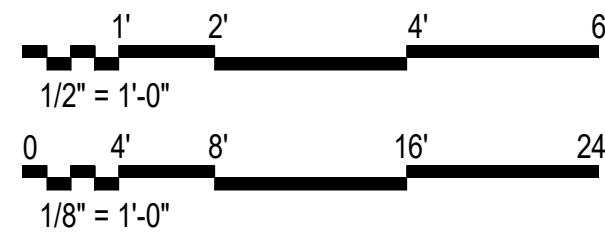


A1 RACK ELEVATION - DATA ROOM 201
SCALE NTS

#SHEET KEYNOTES

1. PROVIDE MULTIPLE 48-INCH WIDE X 96-INCH HIGH X 3/4-INCH BACKBOARDS ON ENTIRE LENGTH OF WALL MOUNTED 6-INCHES AFF TO BOTTOM OF PLYWOOD BACKBOARD (TYP.)
2. PROVIDE PRIMARY BONDING BUSBAR (PBB). NOTE: ENERGETIC COMM ROOM WILL NOT BOND TO NON-ENERGETIC COMM ROOM.
3. PROVIDE VERTICAL CABLE MANAGEMENT ON FRONT AND REAR, 84-INCH HIGH X 6-INCHES WIDE X 16.4-INCH DEEP WITH DUAL HINGED METAL DOOR THAT IS 82-INCHES HIGH X 6.1 INCHES WIDE BY 1.6 INCHES DEEP (END SECTION)
4. PROVIDE VERTICAL CABLE MANAGEMENT ON FRONT AND REAR, 84-INCH HIGH X 10-INCHES WIDE X 16.4-INCH DEEP WITH DUAL HINGED METAL DOOR THAT IS 82-INCHES HIGH X 6.1 INCHES WIDE BY 1.6 INCHES DEEP.
5. PROVIDE UNIVERSAL 2-POST EQUIPMENT RACK, 84-INCHES HIGH X 19-INCHES WIDE, 45 RU WITH 3-INCH POST, LOAD CAPACITY 1500LBS. WITH RACK UNIT MARKINGS ON FRONT AND BACK.
6. PROVIDE 12-INCH WIDE BY 4-INCH HIGH LADDER TYPE CABLE TRAY. MOUNT AT 8' AFF. (TYP.)
7. PROVIDE TWO (2) EACH 4-INCH GANGABLE SLEEVES THROUGH WALL. SLEEVE TYPE TO MATCH FIRE-RATING OF WALL.
8. NETWORK SWITCHES FOR VOICE, DATA, AND SECURITY ARE CFCI.
9. RACK SPACE FOR ADDITIONAL CFCI EQUIPMENT.
10. ELECTRICAL SERVICE PANEL.

GRAPHIC SCALE(S)



100% ISSUED FOR CONSTRUCTION - EXPANSION

NO	DATE	DESIGN	CHK	DR	BY	APPROVED
0	09/18/2024				BP	MT

TELECOMMUNICATIONS PLAN
ENLARGED PLAN

GMLRS
Camden OSD
Calhoun County, Arkansas
Aerojet Rocketdyne

SHEET NO
T-403

SCALE
As indicated

DATE
09/18/2024

PROJ
D3754502

DWG
DWG