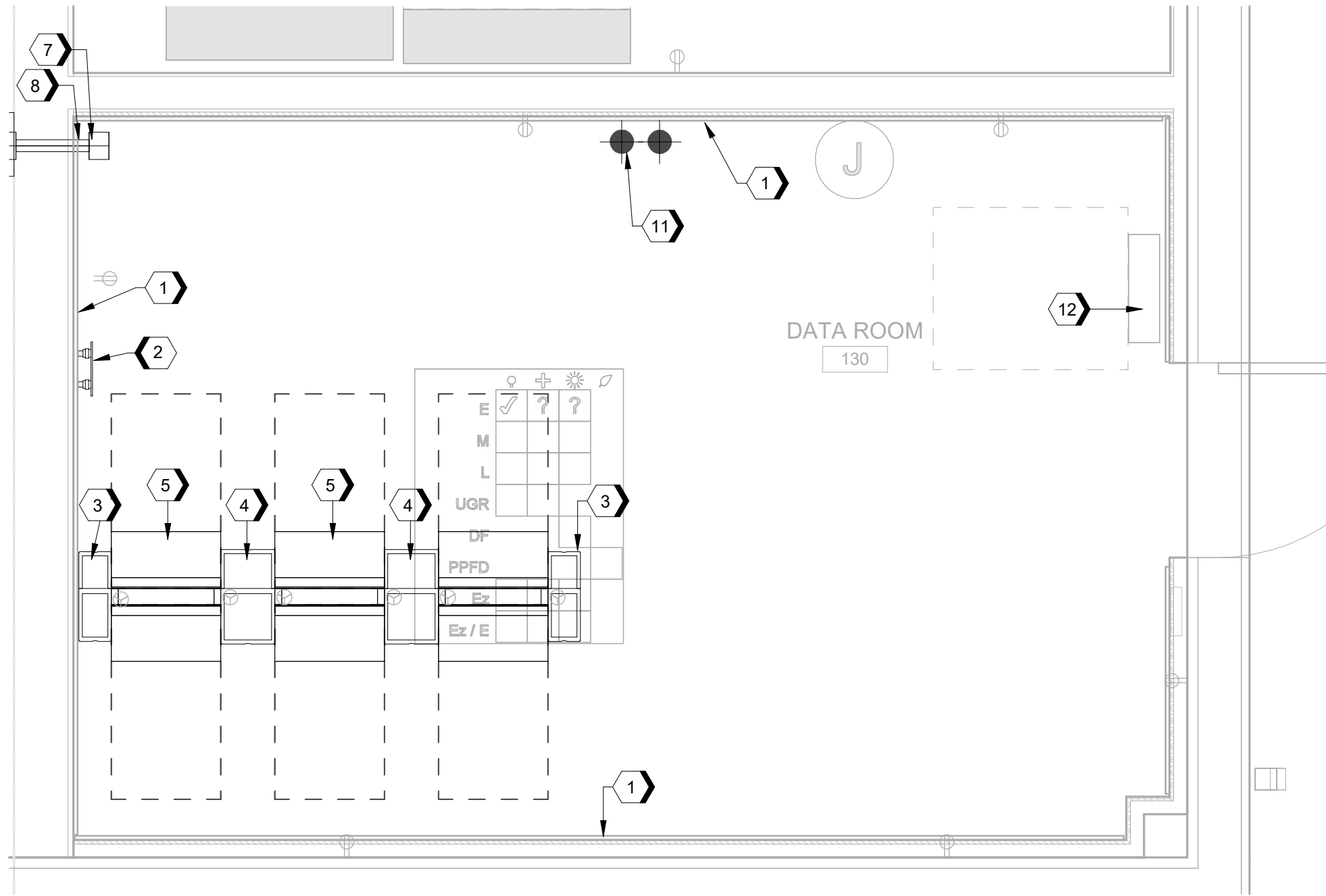
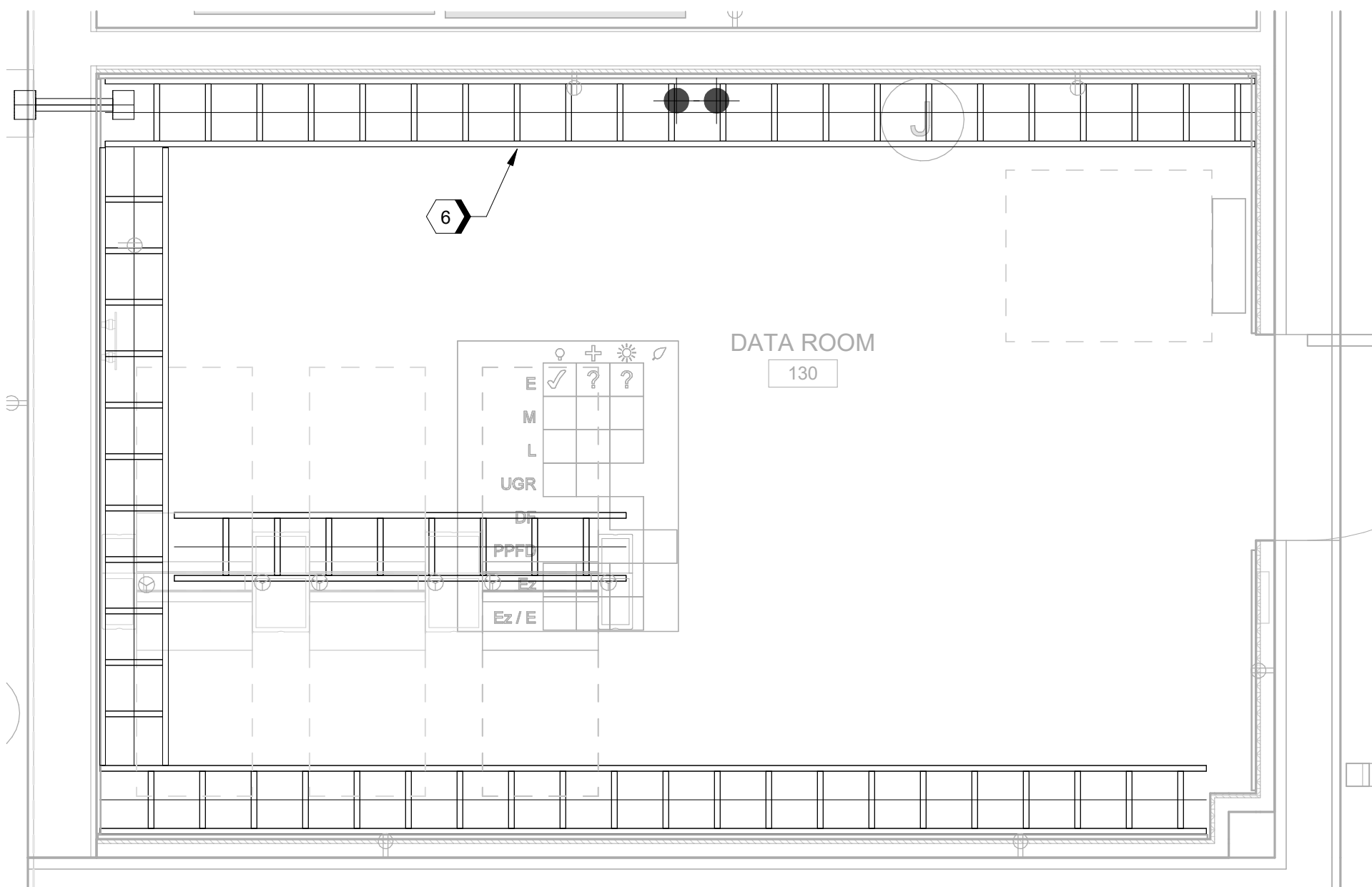


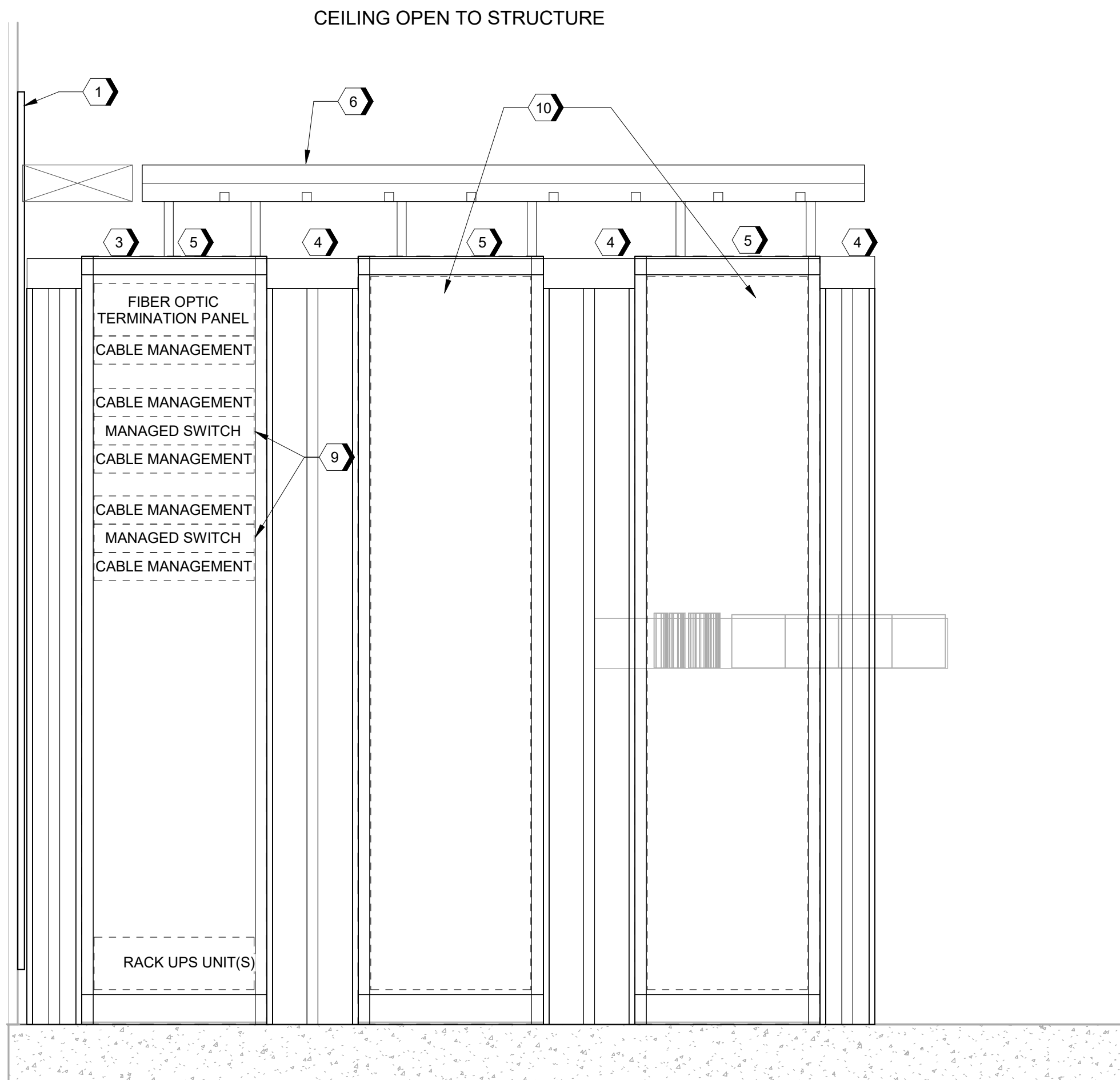
D  
C  
B  
A



**C1** ENLARGED TELECOM EQUIPMENT ROOM - DATA ROOM 130  
SCALE 1/2" = 1'-0"



**C3** ENLARGED TELECOM ROOM LADDER TRAY - DATA ROOM 130  
SCALE 1/2" = 1'-0"

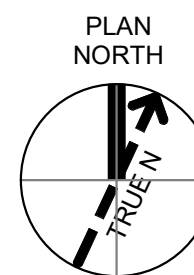


**A1** RACK ELEVATION - DATA ROOM 130  
SCALE NTS

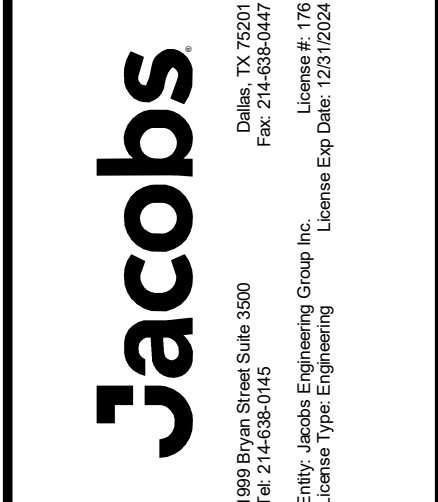
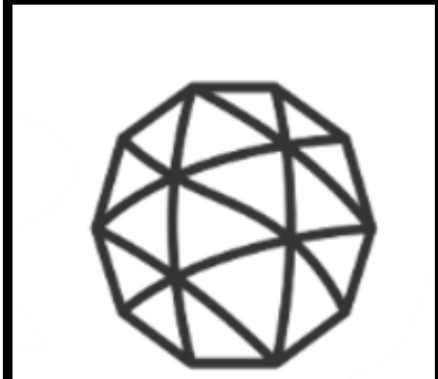
#SHEET KEYNOTES

1. PROVIDE MULTIPLE 48-INCH WIDE X 96-INCH HIGH X 3/4-INCH BACKBOARDS ON ENTIRE LENGTH OF WALL MOUNTED 6-INCHES AFF TO BOTTOM OF PLYWOOD BACKBOARD (TYP.)
2. PROVIDE PRIMARY BONDING BUSBAR (PBB). NOTE: ENERGETIC COMM ROOM WILL NOT BOND TO NON-ENERGETIC COMM ROOM.
3. PROVIDE VERTICAL CABLE MANAGEMENT ON FRONT AND REAR, 84-INCH HIGH X 6-INCHES WIDE X 16.4-INCH DEEP WITH DUAL HINGED METAL DOOR THAT IS 82-INCHES HIGH X 6.1 INCHES WIDE BY 1.6 INCHES DEEP (END SECTION)
4. PROVIDE VERTICAL CABLE MANAGEMENT ON FRONT AND REAR, 84-INCH HIGH X 10-INCHES WIDE X 16.4-INCH DEEP WITH DUAL HINGED METAL DOOR THAT IS 82-INCHES HIGH X 6.1 INCHES WIDE BY 1.6 INCHES DEEP.
5. PROVIDE UNIVERSAL 2-POST EQUIPMENT RACK, 84-INCHES HIGH X 19-INCHES WIDE, 45 RU WITH 3-INCH POST, LOAD CAPACITY 1500LBS, WITH RACK UNIT MARKINGS ON FRONT AND BACK.
6. PROVIDE 12-INCH WIDE BY 4-INCH HIGH LADDER TYPE CABLE TRAY. MOUNT AT 8' AFF. (TYP.)
7. PROVIDE TWO (2) EACH 4-INCH GANGABLE SLEEVES THROUGH WALL. SLEEVE TYPE TO MATCH FIRE-RATING OF WALL.
8. PENETRATIONS INTO ENERGETIC AREAS MUST HAVE SEALED FITTINGS.
9. NETWORK SWITCHES FOR VOICE, DATA, AND SECURITY ARE CFCI.
10. RACK SPACE FOR ADDITIONAL OFCI EQUIPMENT.
11. 2 EACH 4" LATERAL CONDUIT SERVICE ENTRANCE FROM FIBER HUT #2.
12. ELECTRICAL SERVICE PANEL.

GRAPHIC SCALE(S)



SHEET NO	T-401
SCALE	As indicated
DATE	09/18/2024
PROJ	D3754502
DWG	COMM-OSD_GMLRS_1-41



NO	DATE	REVISION	BY	MT
0	09/18/2024	100% ISSUED FOR CONSTRUCTION - EXPANSION	BP	APVD

GMLRS  
Camden OSD  
Calhoun County, Arkansas  
Aerojet Rocketdyne

TELECOMMUNICATIONS  
ENLARGED PLAN

REUSE OF DOCUMENTS

SHEET NO	T-401
SCALE	As indicated
DATE	09/18/2024
PROJ	D3754502
DWG	COMM-OSD_GMLRS_1-41

THIS DOCUMENT AND THE IDEAS AND DESIGNS INCORPORATED HEREIN, AS AN INSTRUMENT OF PROFESSIONAL SERVICE, IS THE PROPERTY OF JACOBS AND IS NOT TO BE USED, IN WHOLE OR IN PART, FOR ANY OTHER PROJECT WITHOUT THE WRITTEN AUTHORIZATION OF JACOBS.

REUSE OF DOCUMENTS

MT

APVD

BP

DR

KR

CHK

SL

APVD

BP

CHK

KR

DR

BP

CHK

KR

DR

BP

CHK

KR

DR

BP

CHK

KR

DR

BP

CHK

KR

DR

BP

CHK

KR

DR

BP

CHK

KR

DR

BP