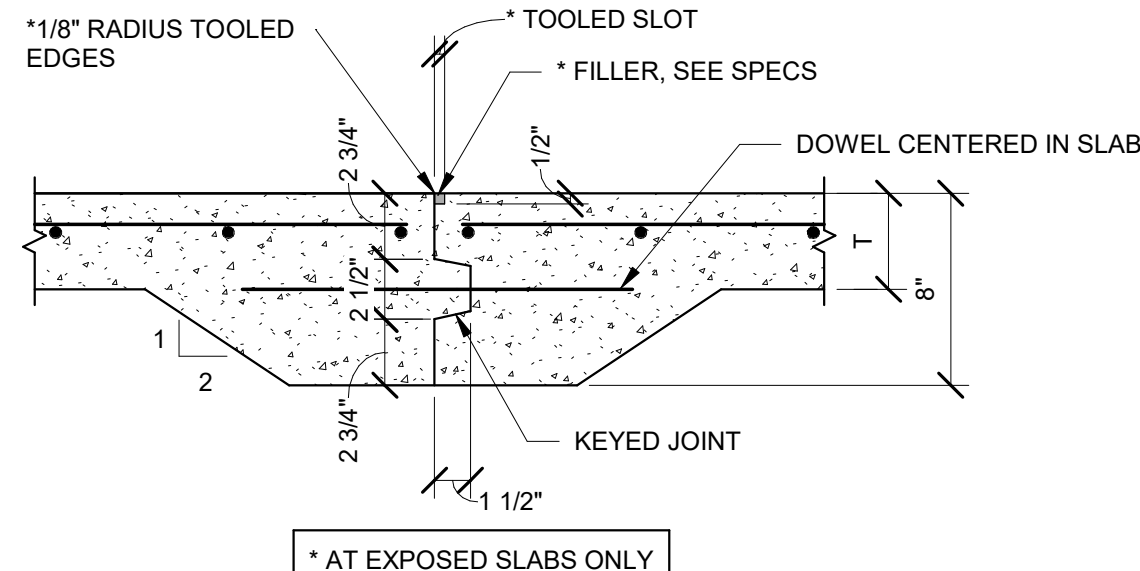
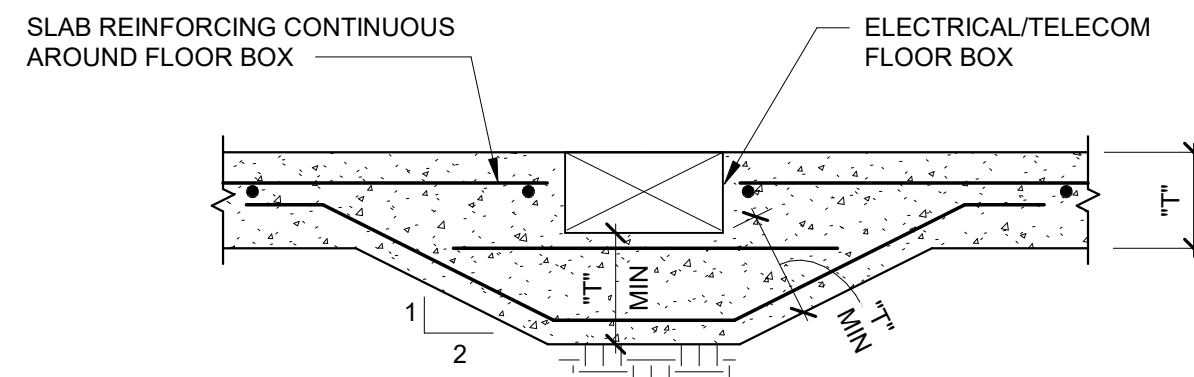


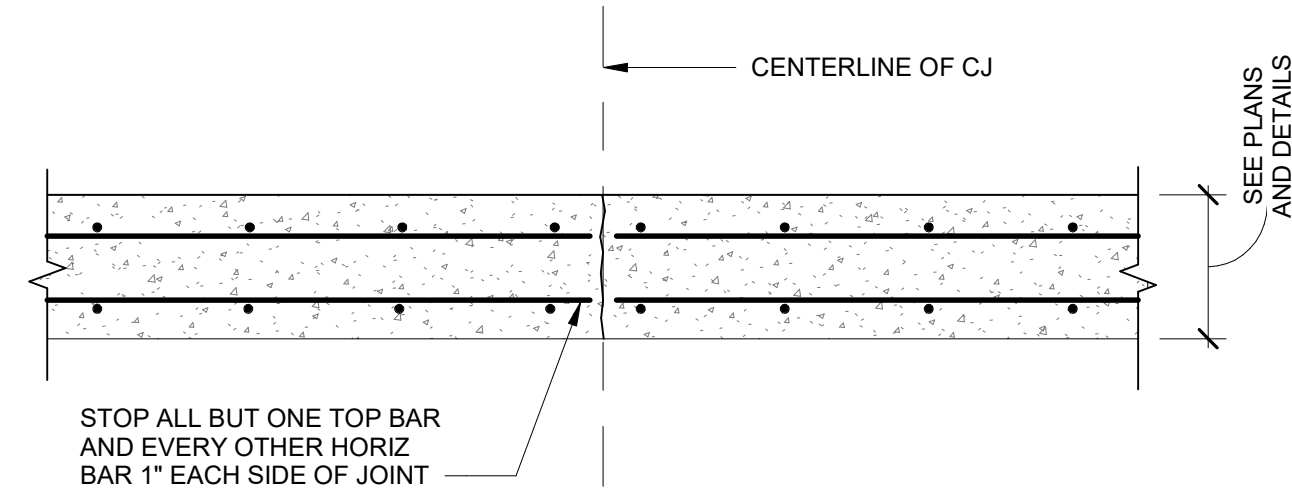
D1 TYPICAL SEALED EDGE ISOLATION JOINT (SEIJ)
SCALE: 12" = 1'-0"



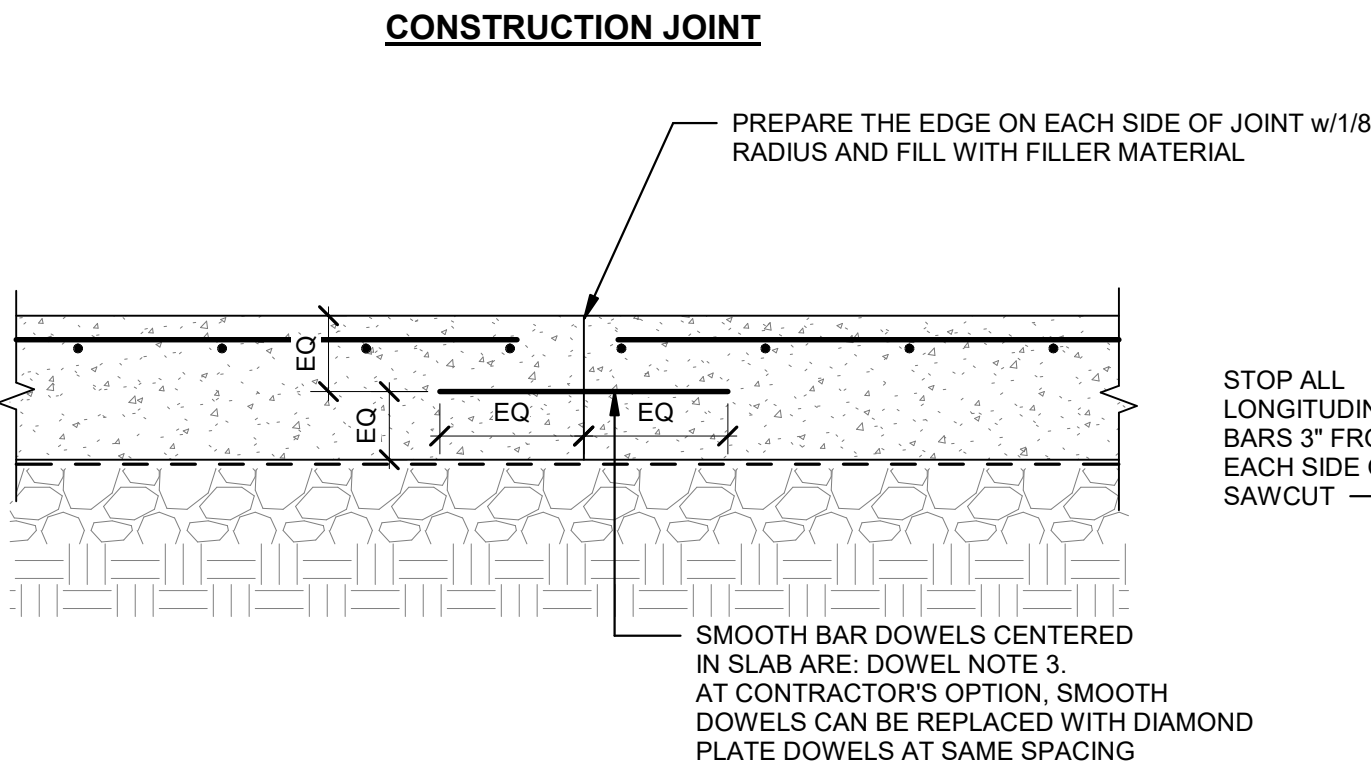
D2 TYPICAL CONSTRUCTION JOINT (CSJ) FOR GRADE SLAB
SCALE: NTS



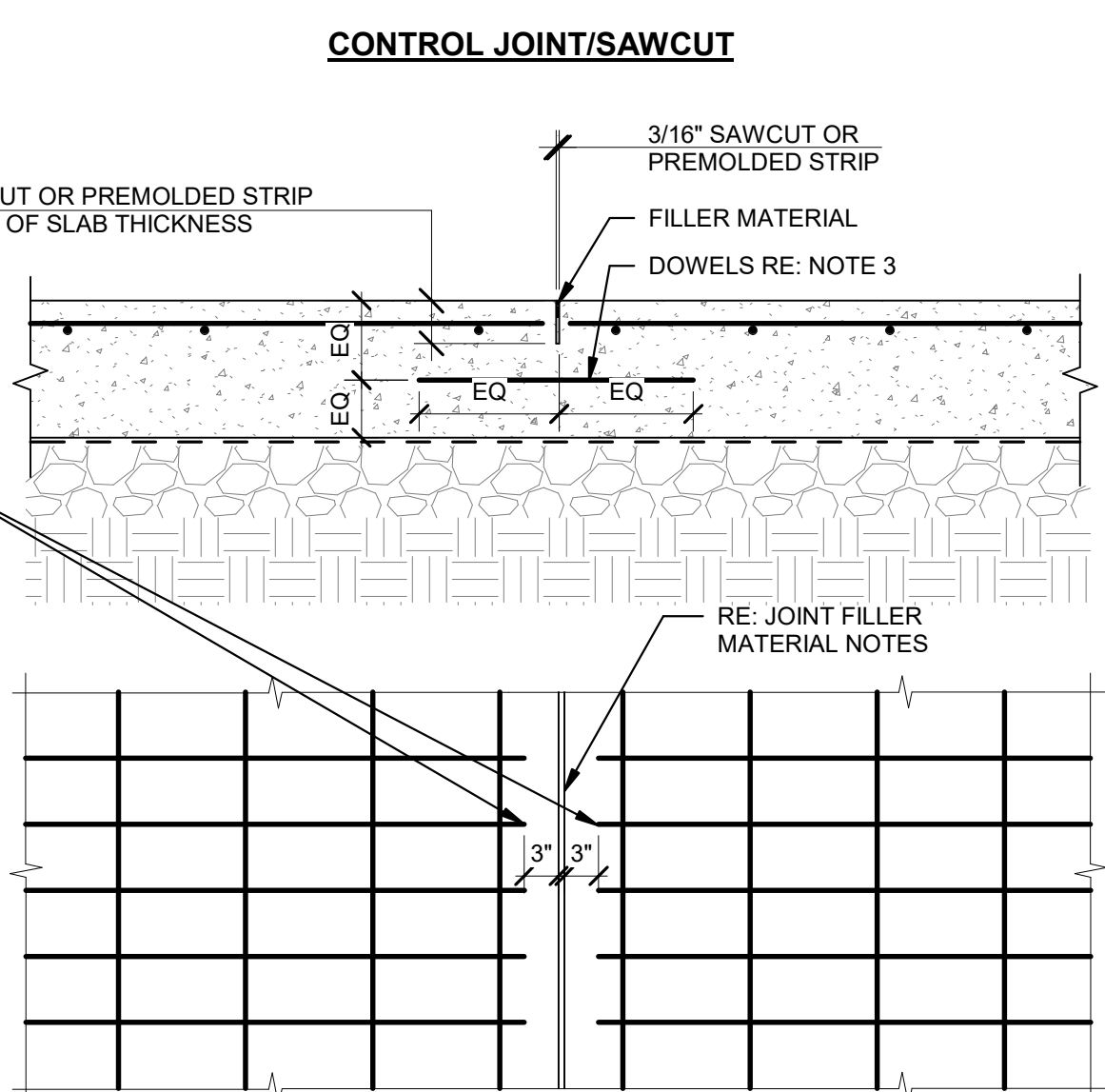
D3 TYPICAL THICKENED SLAB ON GRADE AT FLOOR BOX
SCALE: NTS



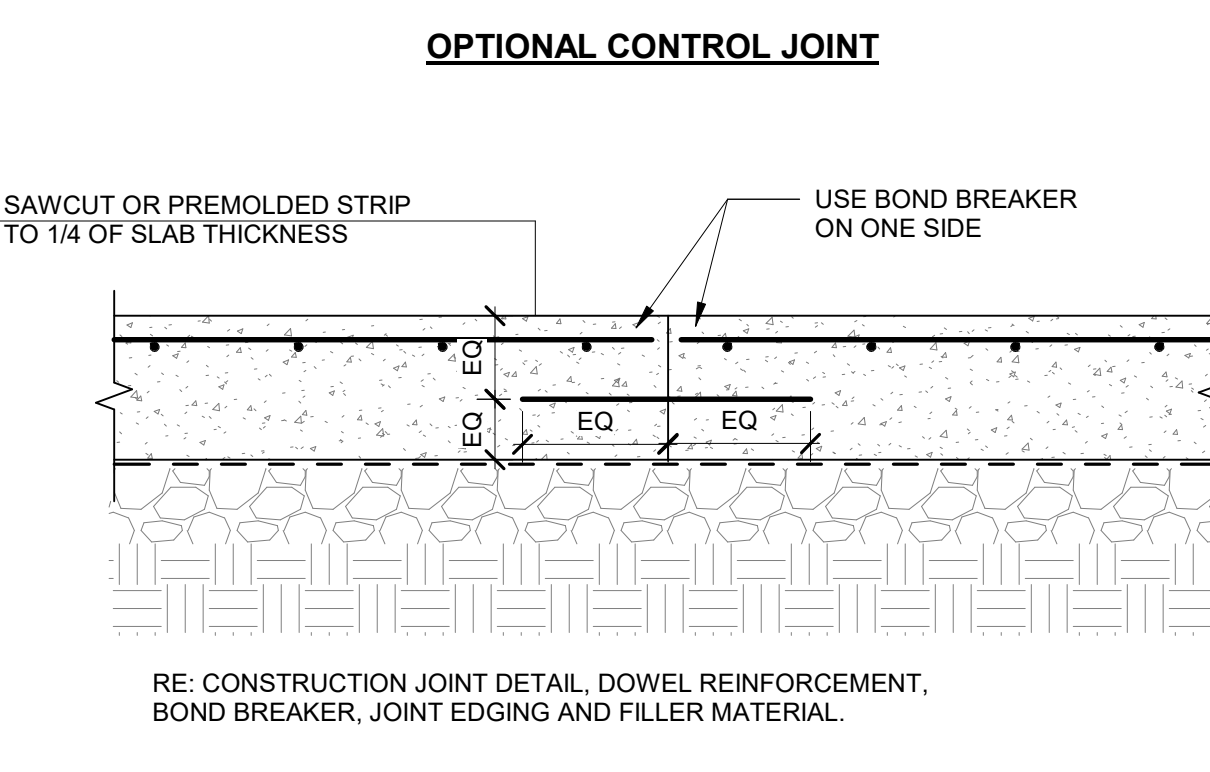
D4 TYPICAL CONTROL JOINT IN CONCRETE WALLS
SCALE: NTS



- CONSTRUCTION JOINT NOTES:**
1. REFER TO PLAN FOR SLAB THICKNESS (T) AND REINFORCEMENT.
 2. SLAB REINFORCEMENT SHALL BE CHAIRED BY SOIL SUPPORT SLAB BOLSTERS.
 3. BREAK BOND BETWEEN NEW AND PREVIOUSLY PLACED SLAB BY SPRAYING OR PAINTING THE EXPOSED SIDE OF THE KEY AND DOWEL WITH CURING COMPOUND, ASPHALTIC EMULSION OR FORM OIL. PROVIDE DOWELS OF SIZE AND SPACING AS INDICATED IN DOWEL NOTES BELOW "OPTIONAL CONTROL JOINT" DETAIL.
 4. REFER TO DETAIL C3/S-501, GENERAL SPECIFICATIONS, AND DRAWINGS FOR SUB-FLOOR DRAINAGE SYSTEM, SUBGRADE PREPARATION AND VAPOR RETARDER REQUIREMENTS.
 5. SUBGRADE SHALL BE FREE OF STANDING WATER AT THE TIME OF CONCRETE PLACEMENT.

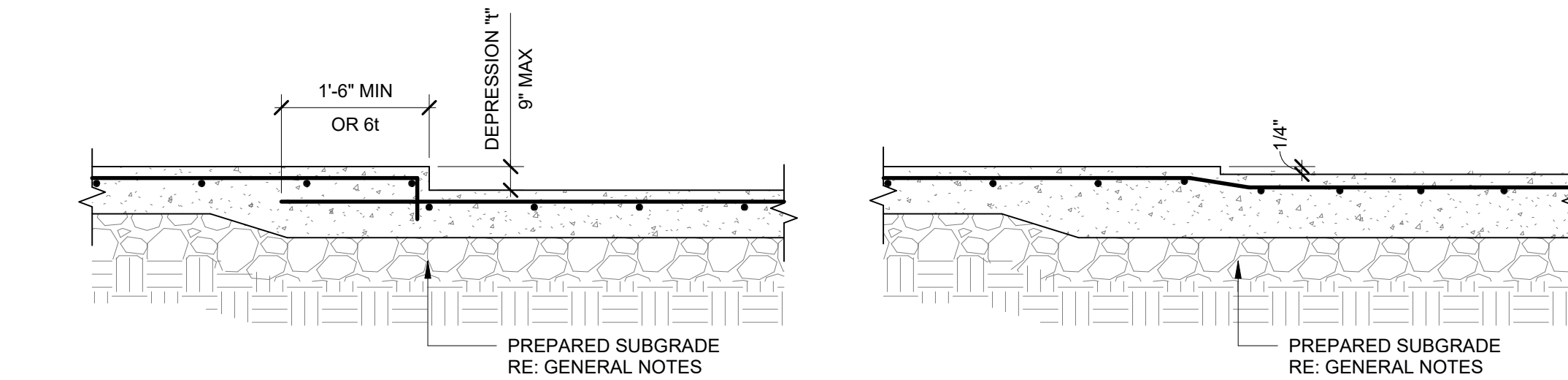


- SAW CUT NOTES:**
1. MAKE SAWCUT AS SOON AS SLAB IS ABLE TO SUPPORT THE WEIGHT OF WORKERS AND SAWING EQUIPMENT WITHOUT DAMAGE TO FINISH SURFACE OF SLAB. SAWCUTS ARE TO BE MADE ABSOLUTELY PRIOR TO THE NEXT MORNING AFTER PLACEMENT.
 2. CLEAN JOINT PRIOR TO FILLING JOINT.
 3. PROVIDE DOWELS OF SIZE AND SPACING AS INDICATED IN DOWEL NOTES BELOW "OPTIONAL CONTROL JOINT" DETAIL.

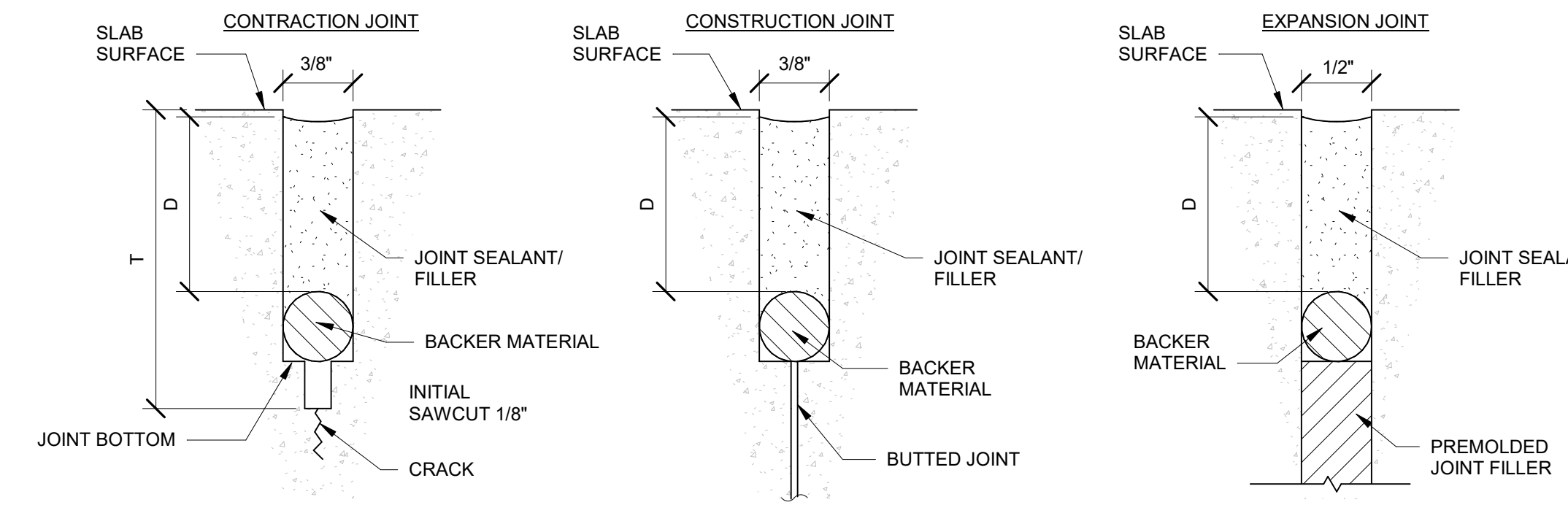


- FORMED CONTROL JOINTS NOTES:**
1. FORM CONTROL JOINTS BY INSERTING PRE-MOLDED STRIP INTO FRESH CONCRETE UNTIL TOP SURFACE OF STRIP IS FLUSH WITH SLAB SURFACE.
 2. TOOL SLAB EDGES ROUND ON EACH SIDE OF INSERT.
 3. AFTER CONCRETE HAS CURED, REMOVE INSERTS AND CLEAN GROOVE OF LOOSE DEBRIS.
- DOWEL NOTES:**
1. DOWELS MUST CONFORM TO ASTM A615.
 2. DOWELS MUST BE CAREFULLY ALIGNED AND SUPPORTED DURING CONCRETING OPERATIONS.
 3. DOWEL SIZE AND SPACING:
SLABS UP TO 7.5\"/>

- JOINT FILLER MATERIAL NOTES:**
1. FILLER MATERIAL MUST HAVE A MINIMUM SHORE HARDNESS OF 35, AND CONFORM TO ASTM D2240. JOINT FILLER MUST BE APPROVED BY ENGINEER PRIOR TO APPLICATION. APPROVED JOINT FILLER IS VULKEM 245 AS MANUFACTURED BY MAMECO INTERNATIONAL OR APPROVED EQUAL.
 2. WHERE POSSIBLE, FILLER MATERIAL MUST BE APPLIED WHEN BUILDING IS UNDER PERMANENT TEMPERATURE CONTROL. THIS MUST BE EITHER AT THE END OF CONSTRUCTION OF THE COMPLETE BUILDING SHELL, OR A MINIMUM OF 90 DAYS AFTER SLAB CONSTRUCTION.
 3. FOLLOW STRICTLY THE MANUFACTURER'S RECOMMENDED PROCEDURE FOR APPLYING THE JOINT FILLER.

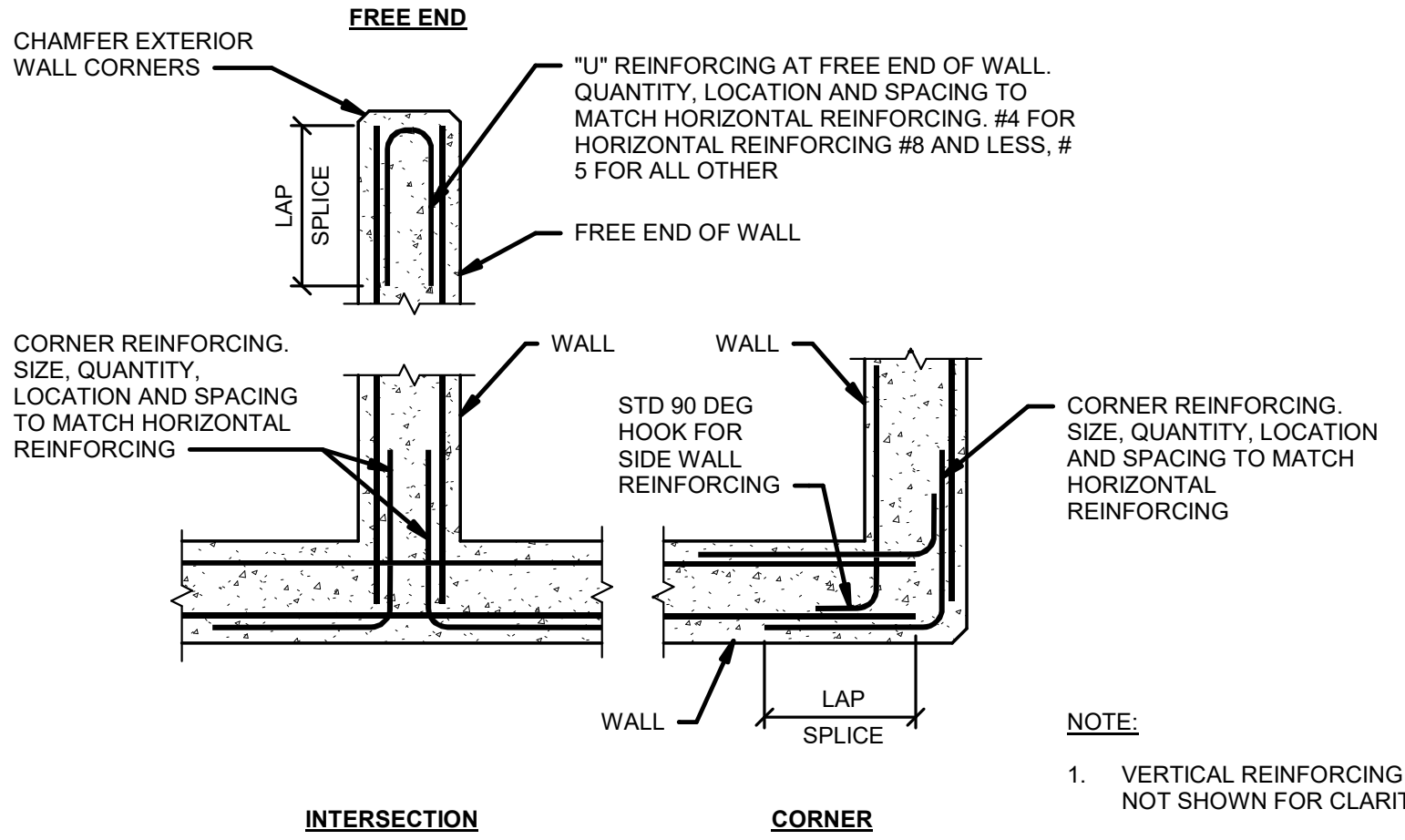


C4 TYPICAL SLAB-ON-GRADE DEPRESSION DETAIL
SCALE: NTS

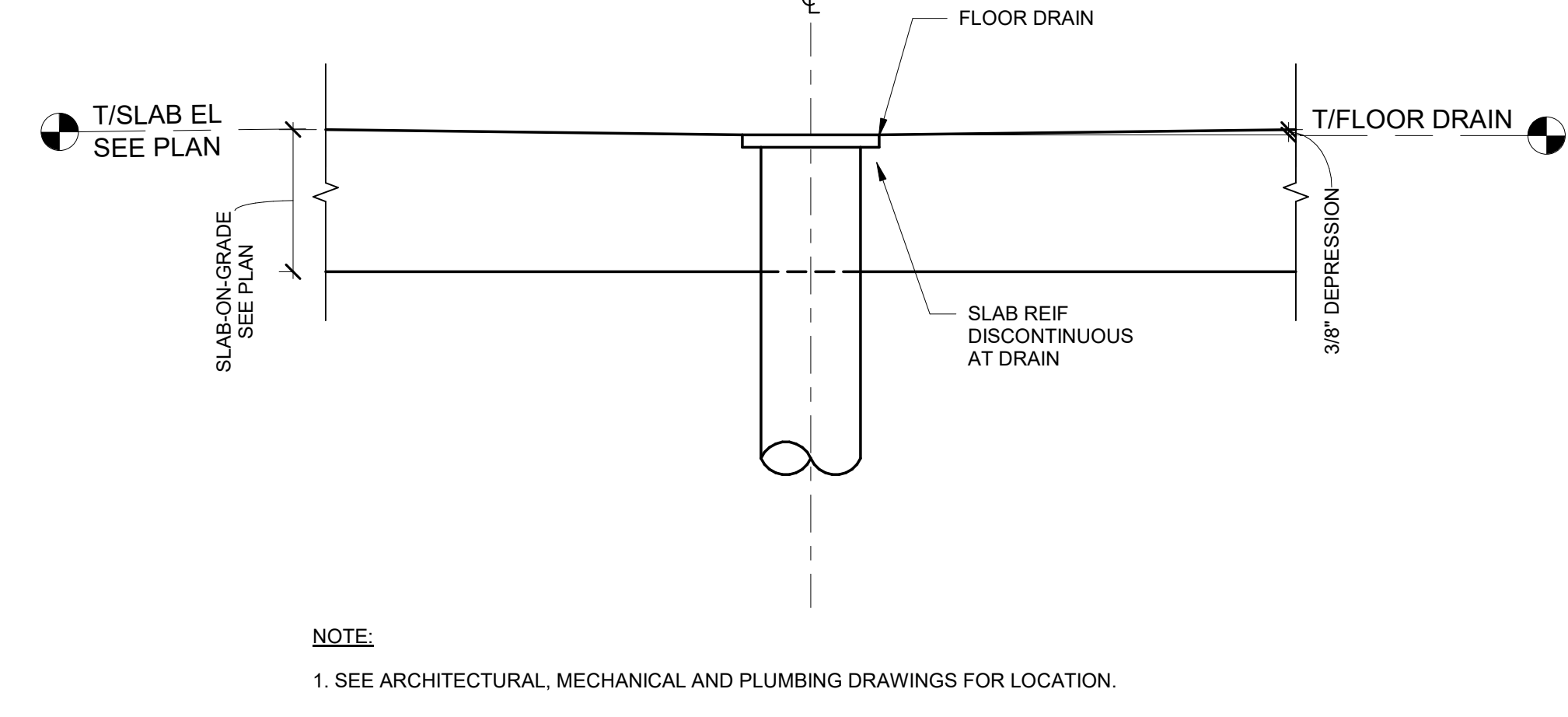


- T = DEPTH OF INITIAL SAWCUT**
- a. 1/4 SLAB THICKNESS ± 1/2\"/>
- NOTE:** AT JOINTS WITH SEALANT, TOP OF SEALANT TO BE 1/4\"/>

B4 TYPICAL JOINT SEALANT DETAILS AT GRADE SLABS
SCALE: NTS



A1 TYPICAL CORNER BARS FOR WALL REINFORCEMENT
SCALE: 1\"/>



A2 TYPICAL FLOOR DRAIN SLAB DEPRESSION
SCALE: 1\"/>



NO.	DATE	REVISION	CHK	APP'D	BY	DATE
1	09/18/2024	100% ISSUED FOR CONSTRUCTION	CHK	APP'D	BY	DATE

GMLRS
Camden OSD
Calhoun County, Arkansas
Aerojet Rocketdyne

STRUCTURAL
TYPICAL DETAILS

SHEET NO
S-801

SCALE: As indicated
DATE: 09/18/2024
PROJ: D3754502
DWG: (CHECKED: DAK/RS, J-01)