

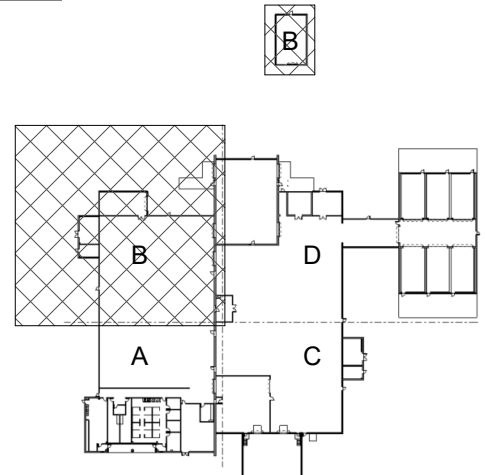
A1 PARTIAL FINISH AND SIGNAGE PLAN - AREA B
SCALE 1/8" = 1'-0"

GENERAL SHEET NOTES

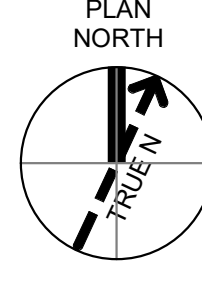
- A. VERIFY AND DOCUMENT CONDITIONS AND DIMENSIONS ON THE JOB SITE BEFORE BEGINNING CONSTRUCTION
- B. DO NOT SCALE THE DRAWINGS.
- C. ALL TRANSITIONS MUST OCCUR AT THE CENTERLINE OF THE DOOR, DOORWAY OR CEILING LINE, UNLESS OTHERWISE INDICATED.
- D. PLAN DIMENSIONS ARE TO FACE OF GYPSUM BOARD, FACE OF CONCRETE, FACE OF CMU, OR COLUMN CENTERLINE UNLESS NOTED OTHERWISE.
- E. REFER TO REFLECTED CEILING PLANS ON SHEET AE-101 FOR MORE INFORMATION.
- F. COORDINATE LOCATIONS OF FLOOR DRAINS WITH PLUMBING DRAWINGS.
- G. APPLY BASE AS SPECIFIED ON GYPSUM BOARD WALLS FINISHES ONLY. DO NOT APPLY BASE TO CMU WALLS.
- H. REFER TO ARCHITECTURAL, MECHANICAL, PLUMBING, AND ELECTRICAL DRAWINGS FOR COORDINATION AND ADDITIONAL INFORMATION.
- I. ALL WALLS TO BE PAINTED PT-1 WITH AN ORANGE PEEL TEXTURE UNLESS NOTED OTHERWISE.
- J. REFER TO SHEET I-601 FOR FINISH LEGEND AND ROOM FINISH SCHEDULE.
- K. REFER TO SHEET I-602 FOR SIGNAGE SCHEDULE AND DETAILS.

SHEET KEYNOTES

KEY PLAN



GRAPHIC SCALE(S)



1990 Bryan Street, Suite 2000
Dallas, TX 75201
Phone: 214.746.6200
Fax: 214.746.6208
Email: info@jacobs.com
Website: www.jacobs.com
License: Reg. No. 01310020

REUSE OF DOCUMENTS		CHECKER		APPROVER	
NO.	DATE	CHK.	APVD.	BY	TM.
0	09/18/2024	JMW	JMW	APVD	TM
100% ISSUED FOR CONSTRUCTION - EXPANSION					

INTERIORS
PARTIAL FINISH AND
SIGNAGE PLAN - AREA B

GMLRS
Camden OSD
Calhoun County, Arkansas
Aerojet Rocketdyne

SHEET NO
IN103

SCALE
As indicated

DATE
09/18/2024

PROJ
D3754502

DWG
GMLRS-OSD_INTERIORS_0103