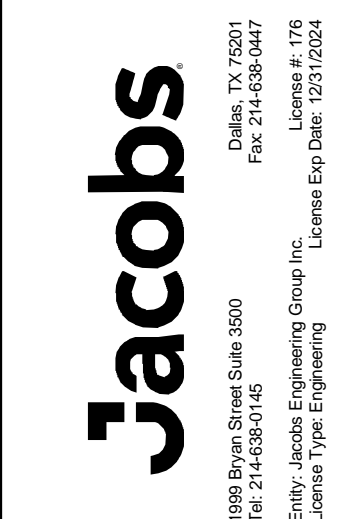


A1 GROUNDING PLAN - GROUND FLOOR - AREA A
SCALE 1/8" = 1'-0"

GENERAL SHEET NOTES

- REFER TO SHEET E-001 FOR ABBREVIATIONS, LEGENDS, AND SYMBOLS.
- DESIGN SHOWN IS DIAGRAMMATIC AND INTENDED TO SHOW THE GROUNDING ELECTRODE SYSTEM. VERIFY DIMENSIONS, SITE CONDITIONS, AND COORDINATE GROUNDING WITH OTHER UTILITIES.
- PROVIDE MAGNETIC TAPE OVER ALL BURIED GROUNDING CONDUCTORS.
- GROUNDING SYSTEM TO CONSIST OF 3 GROUND LOOPS SCHEMES THAT ARE TO BE INTERCONNECTED. SEE FOLLOWING:
 - EXTERIOR UNDERGROUND GROUNDING LOOP APPROXIMATELY 3' FROM BUILDING.
 - EXTERIOR ABOVE GROUND GROUNDING LOOP TO BE MOUNTED ON BUILDING APPROXIMATELY 2' AFF.; TO BOND METAL DOORS, METAL WINDOWS, AND METAL UTILITIES.
 - INTERIOR GROUNDING LOOP TO BE MOUNTED APPROXIMATELY 18' AFF.; TO BOND INTERIOR BUILDING EQUIPMENT.
- GROUND METALLIC PIPES AT TWO LOCATIONS USING AN APPROVED CLAMP WITHIN 5 FEET OF SERVICE ENTRANCE.
- BOND ALL METALLIC UNDERGROUND PIPING ENTERING THE STRUCTURE TO THE LIGHTNING PROTECTION SYSTEM AT ITS NEAREST POINT.
- LIGHTNING PROTECTION SYSTEM IS A DELEGATED DESIGN AND MUST MEET NFPA 780 AND MASTER LABEL CERTIFICATION.



| NO. | DATE | REVISION | BY | APPROVED |
|-----|------------|------------------------------|-----|----------|
| 1 | 10/03/2024 | ADDENDUM 01 - EXPANSION | CJA | AM |
| 0 | 09/18/2024 | 100% ISSUED FOR CONSTRUCTION | CJA | AM |

| NO. | DATE | REVISION | BY | APPROVED |
|-----|------------|------------------------------|-----|----------|
| 1 | 10/03/2024 | ADDENDUM 01 - EXPANSION | CJA | AM |
| 0 | 09/18/2024 | 100% ISSUED FOR CONSTRUCTION | CJA | AM |

| NO. | DATE | REVISION | BY | APPROVED |
|-----|------------|------------------------------|-----|----------|
| 1 | 10/03/2024 | ADDENDUM 01 - EXPANSION | CJA | AM |
| 0 | 09/18/2024 | 100% ISSUED FOR CONSTRUCTION | CJA | AM |

| NO. | DATE | REVISION | BY | APPROVED |
|-----|------------|------------------------------|-----|----------|
| 1 | 10/03/2024 | ADDENDUM 01 - EXPANSION | CJA | AM |
| 0 | 09/18/2024 | 100% ISSUED FOR CONSTRUCTION | CJA | AM |

| NO. | DATE | REVISION | BY | APPROVED |
|-----|------------|------------------------------|-----|----------|
| 1 | 10/03/2024 | ADDENDUM 01 - EXPANSION | CJA | AM |
| 0 | 09/18/2024 | 100% ISSUED FOR CONSTRUCTION | CJA | AM |

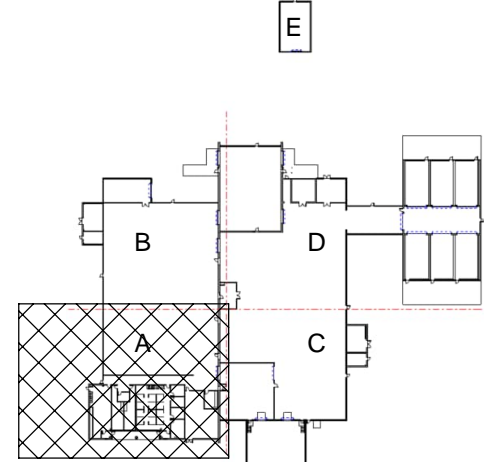
| NO. | DATE | REVISION | BY | APPROVED |
|-----|------------|------------------------------|-----|----------|
| 1 | 10/03/2024 | ADDENDUM 01 - EXPANSION | CJA | AM |
| 0 | 09/18/2024 | 100% ISSUED FOR CONSTRUCTION | CJA | AM |

| NO. | DATE | REVISION | BY | APPROVED |
|-----|------------|------------------------------|-----|----------|
| 1 | 10/03/2024 | ADDENDUM 01 - EXPANSION | CJA | AM |
| 0 | 09/18/2024 | 100% ISSUED FOR CONSTRUCTION | CJA | AM |

| NO. | DATE | REVISION | BY | APPROVED |
|-----|------------|------------------------------|-----|----------|
| 1 | 10/03/2024 | ADDENDUM 01 - EXPANSION | CJA | AM |
| 0 | 09/18/2024 | 100% ISSUED FOR CONSTRUCTION | CJA | AM |

| NO. | DATE | REVISION | BY | APPROVED |
|-----|------------|------------------------------|-----|----------|
| 1 | 10/03/2024 | ADDENDUM 01 - EXPANSION | CJA | AM |
| 0 | 09/18/2024 | 100% ISSUED FOR CONSTRUCTION | CJA | AM |

KEY PLAN



GRAPHIC SCALE(S)

