

EXTERIOR FINISH SCHEDULE			
ITEM CODE	DESCRIPTION	REFERENCE COLOR	LOCATION
EX-1	PAINT, COATING	LIGHT GRAY	EXTERIOR WALLS
EX-2	PAINT, COATING	BLUE	EXTERIOR ROOF
EX-3	PAINT	YELLOW	BOLLARD
PT-1	PAINT	OFF WHITE	INTERIOR WALLS
COORDINATE FINAL COLOR SELECTION WITH USER			

GENERAL SHEET NOTES

PRE-ENGINEERED METAL BUILDING DESIGN SHOWN IS DESIGN INTENT. FINAL PEMB DESIGN IS DELEGATED TO THE MANUFACTURER. ENSURE ALL CODE, SPECIFICATION, FM GLOBAL, INSURANCE, AND USER REQUIREMENTS ARE COORDINATED AND INCORPORATED INTO FINAL DESIGN.

ALL BUILDING MATERIALS MUST BE NEW AND PROVIDED BY THE CONTRACTOR UNLESS SPECIFICALLY NOTED AS PROVIDED BY THE OWNER. ALL LARGE INTERIOR MANUFACTURING EQUIPMENT PIECES ARE PROVIDED BY THE OWNER AND INSTALLED BY CONTRACTOR, UNLESS OTHERWISE NOTED.

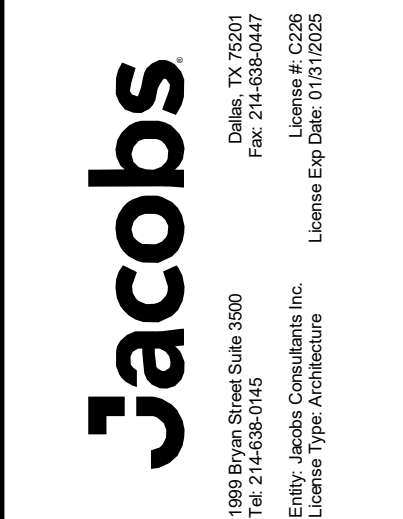
VERIFY ALL FIELD CONDITIONS AND DIMENSIONS PRIOR TO PROCEEDING WITH THE WORK. ALL DISCREPANCIES MUST BE BROUGHT TO THE IMMEDIATE ATTENTION OF THE ARCHITECT IN WRITING. OVERALL DIMENSIONS INDICATED ARE TO EXTERIOR FACE OF STRUCTURAL GIRT FRAMING, UNLESS OTHERWISE NOTED.

STUDY AND COMPARE THE CONTRACT DOCUMENTS WITH EACH OTHER, AND AT ONCE, REPORT TO THE ARCHITECT ANY ERRORS AND INCONSISTENCIES OR OMISSIONS DISCOVERED. ANY CONSTRUCTION ACTIVITY PERFORMED KNOWING IT INVOLVES A RECOGNIZED ERROR, INCONSISTENCY OR OMISSION IN THE CONTRACT DOCUMENTS WITHOUT SUCH NOTICE, THE CONTRACTOR WILL ASSUME RESPONSIBILITY FOR SUCH PERFORMANCE AND WILL BEAR THE AMOUNT OF THE COST OF THE CONSTRUCTION.

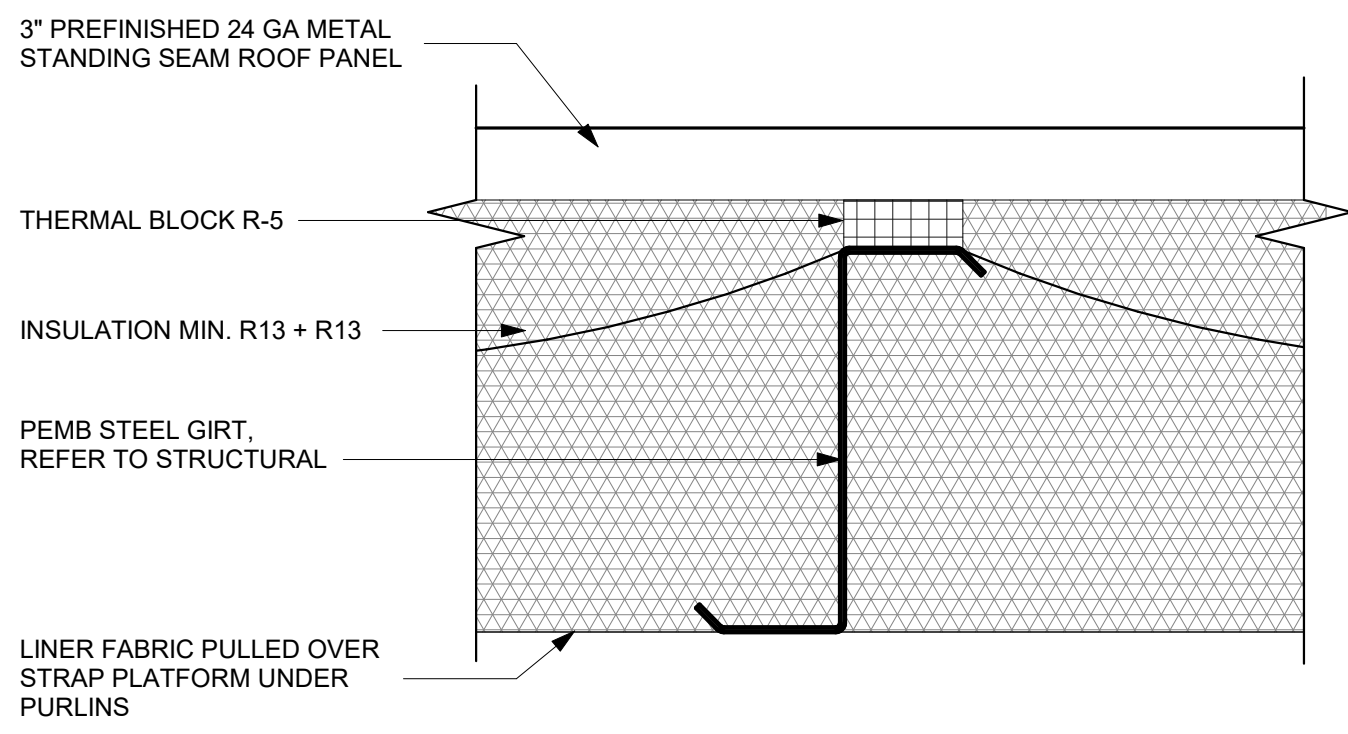
DO NOT SCALE THE DRAWINGS FOR CONSTRUCTION PURPOSES.

PROVIDE AIR BARRIER SYSTEM THAT IS CONTINUOUS AND CONNECTED ACROSS THE SIX SURFACES OF THE BUILDING ENVELOPE MEETING THE PERFORMANCE REQUIREMENTS AS OUTLINED IN THE SPECIFICATIONS.

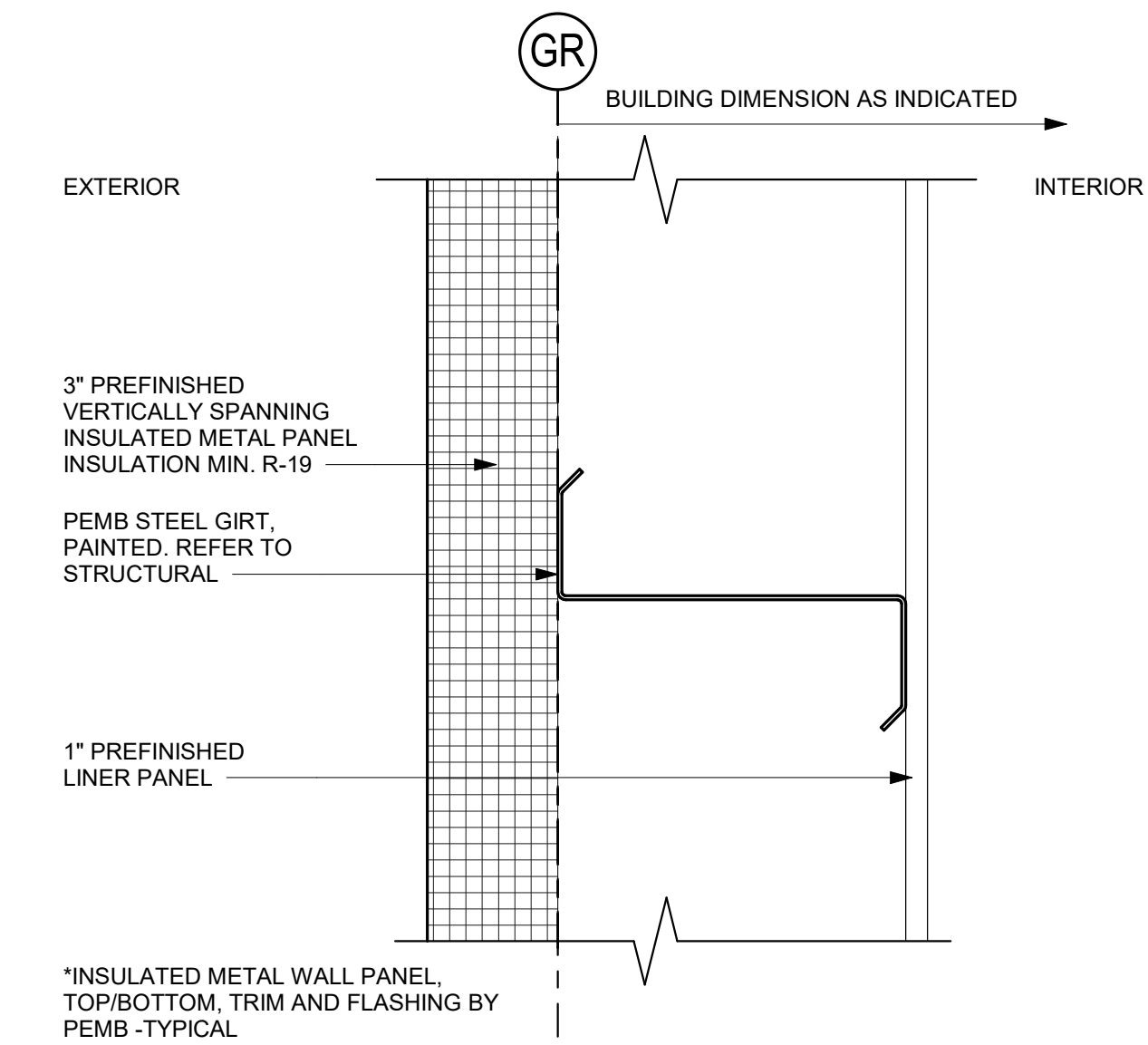
FINISH FLOOR ELEVATION OF 0' IS A RELATIVE ELEVATION USED FOR DESIGN COORDINATION. REFER TO CIVIL ENGINEERING DRAWINGS FOR ACTUAL TOPOGRAPHIC ELEVATIONS OF EACH BUILDING. TOPOGRAPHIC ELEVATIONS VARY BETWEEN BUILDINGS.



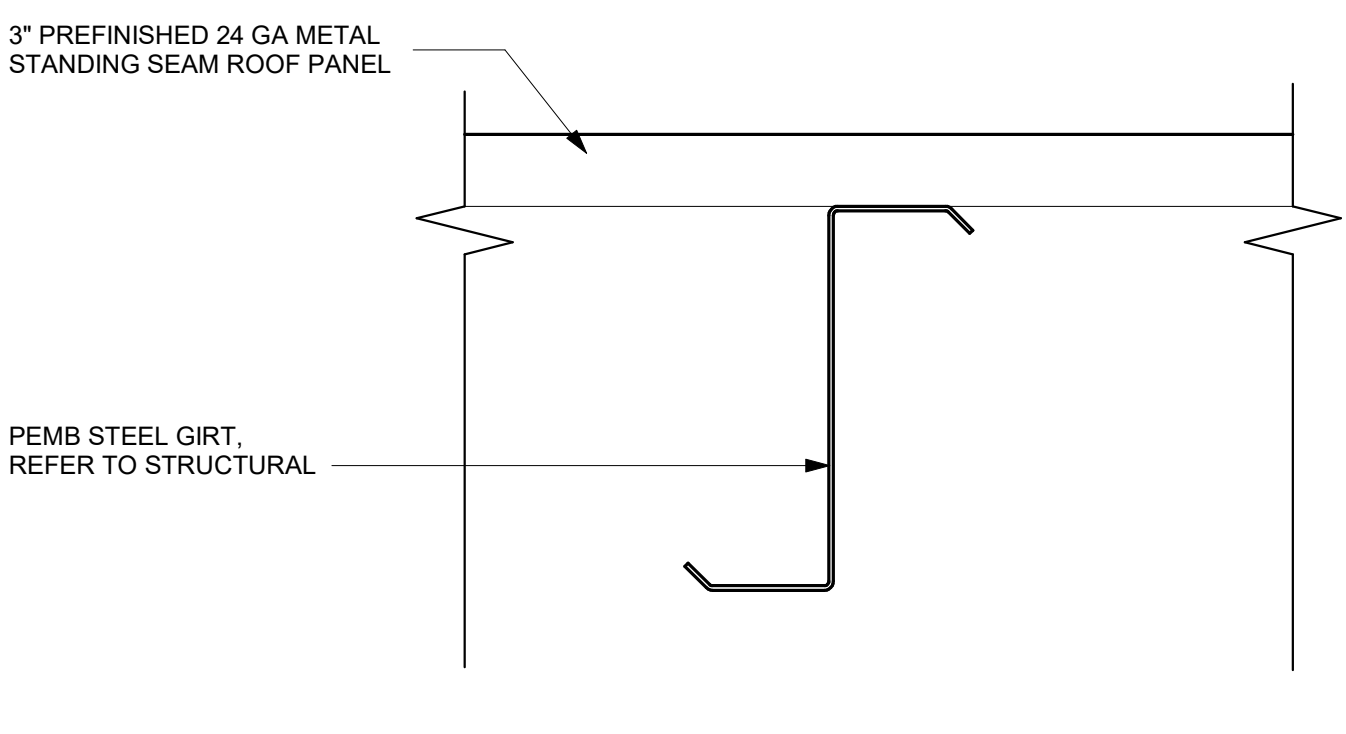
NO.	DATE	BY	CHK	DR	IE	APVD	TM
0	09/18/2024	100% ISSUED FOR CONSTRUCTION - EXPANSION					
DESIGN							
NOVA							
CHK							
DR							
IE							
APVD							
BY							
TM							



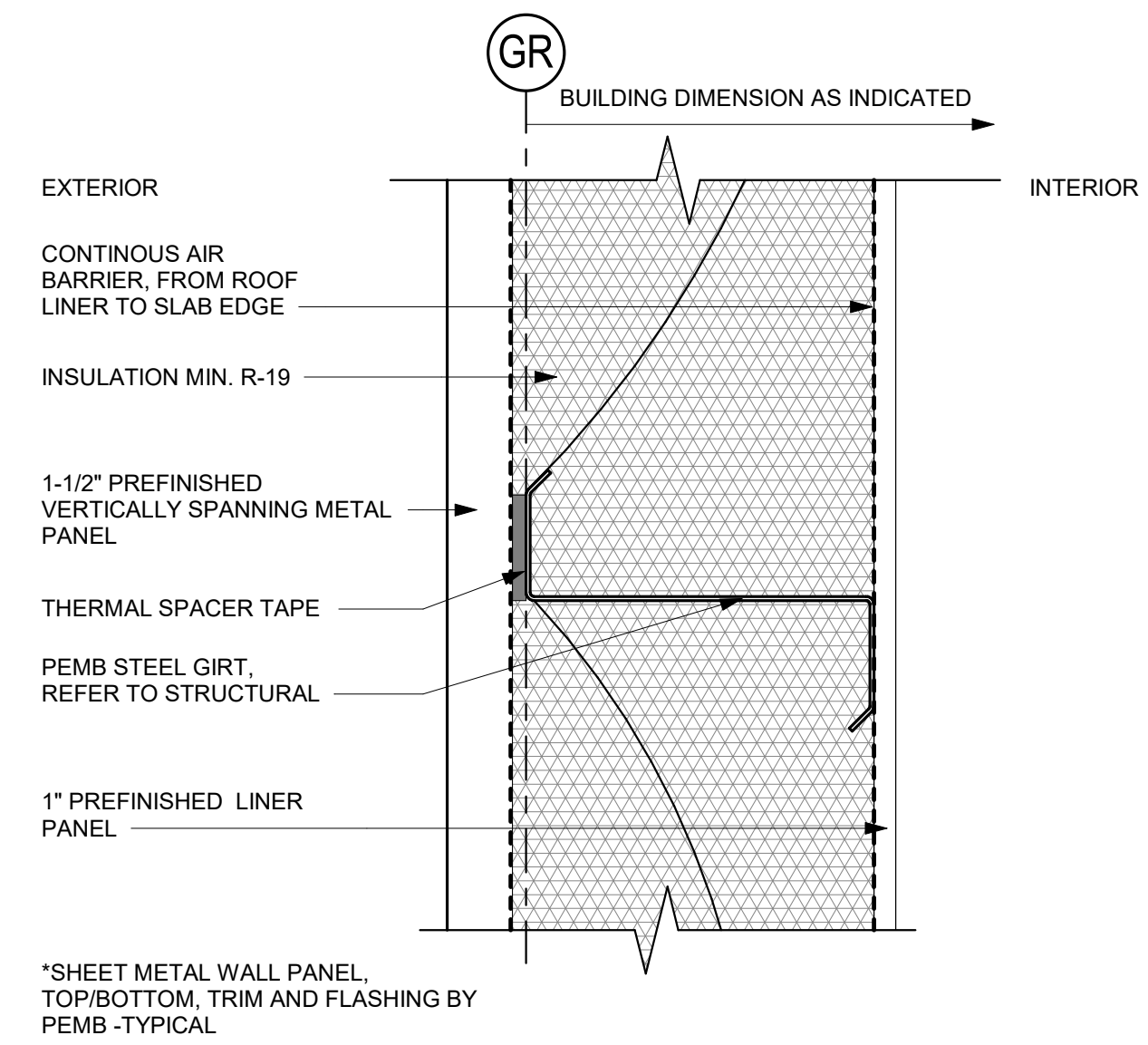
B1 ROOF ASSEMBLY, RP-1
SCALE 3" = 1'-0"



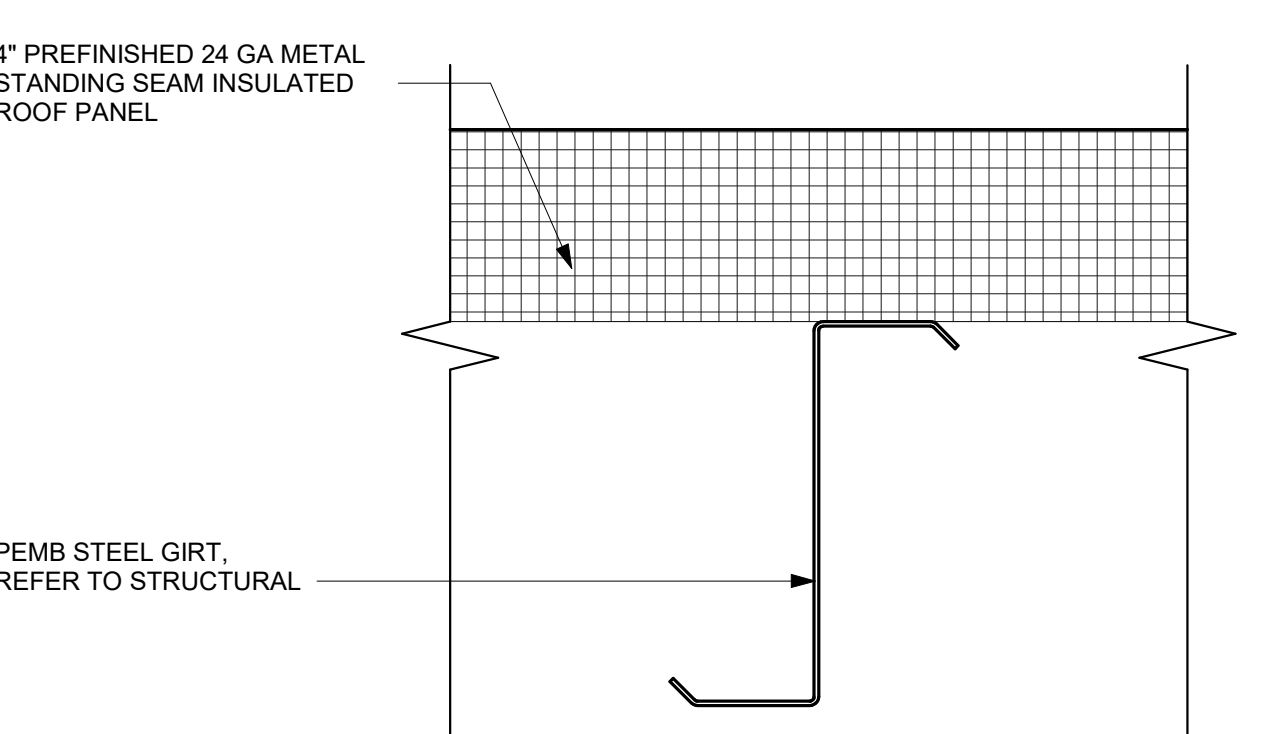
A1 EXTERIOR WALL ASSEMBLY, MP-1
SCALE 3" = 1'-0"



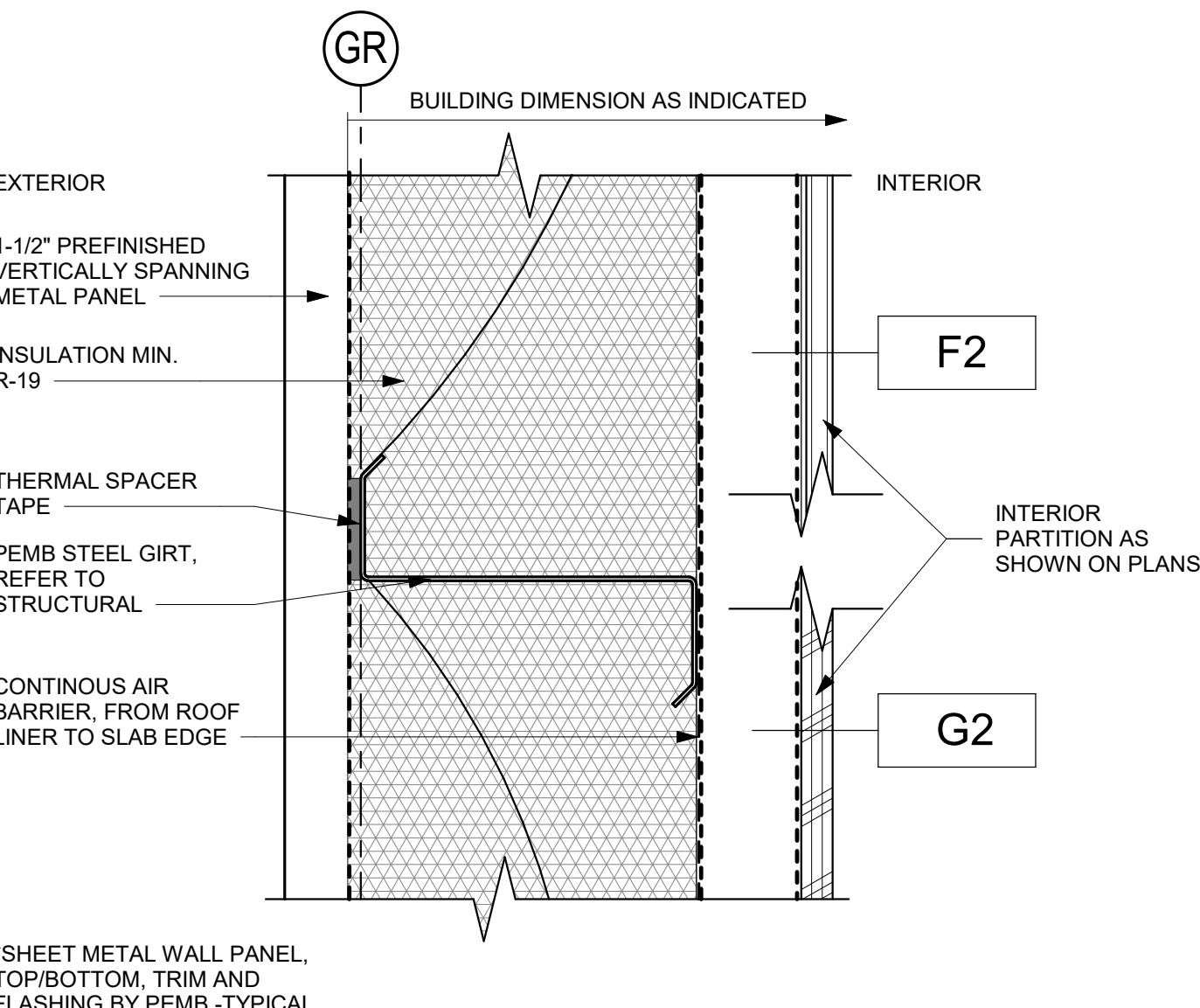
B2 ROOF ASSEMBLY, RP-2
SCALE 3" = 1'-0"



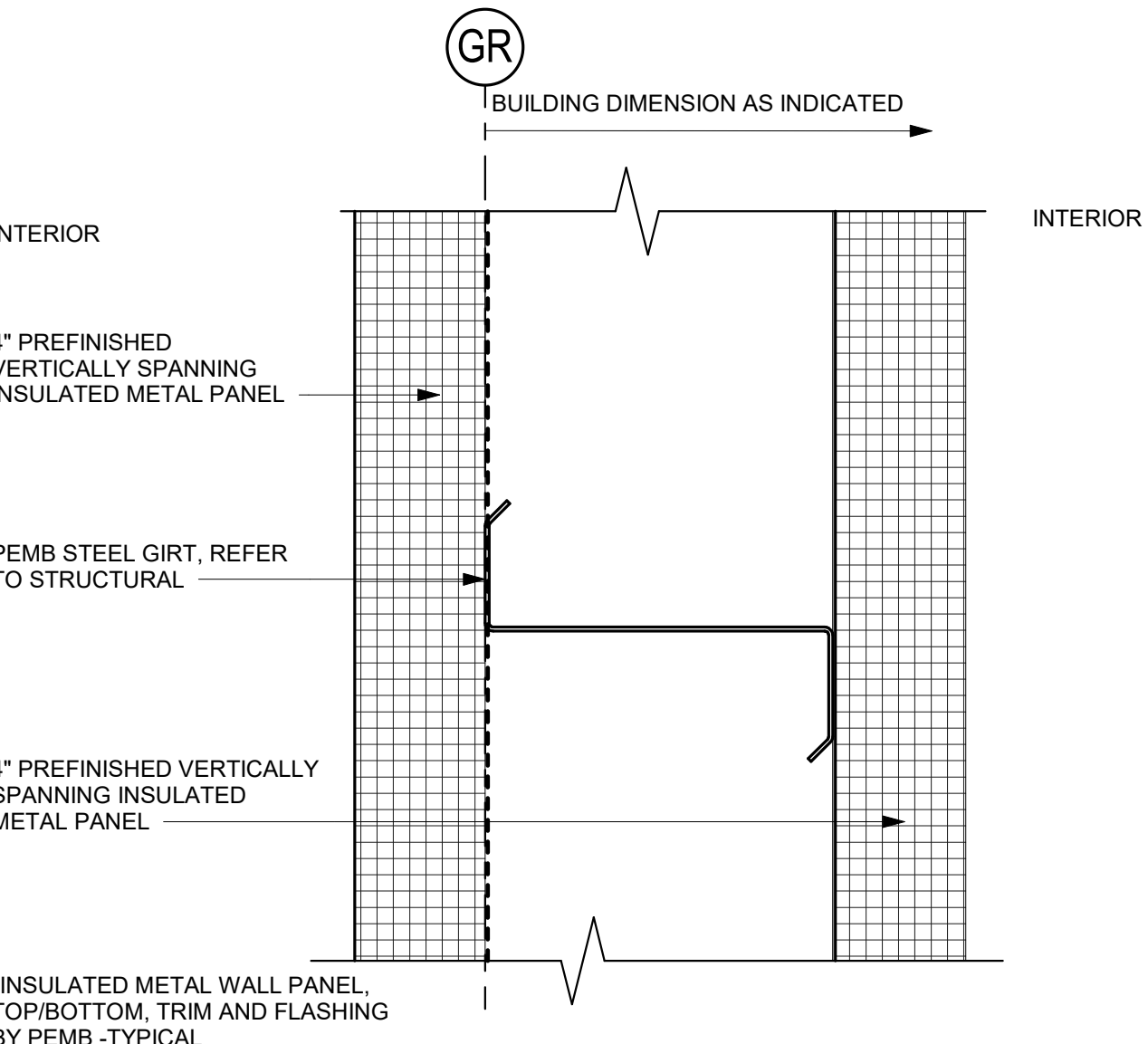
A2 EXTERIOR WALL ASSEMBLY, MP-2
SCALE 3" = 1'-0"



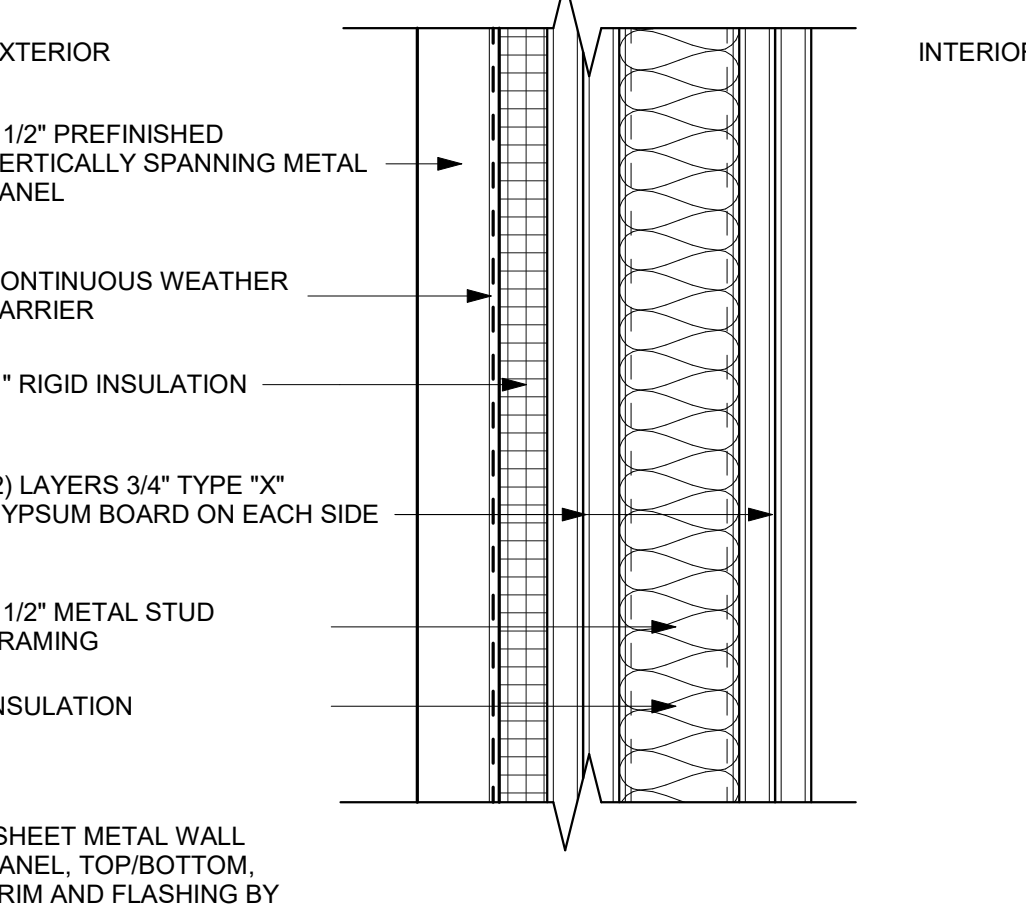
B3 ROOF ASSEMBLY, RP-3
SCALE 3" = 1'-0"



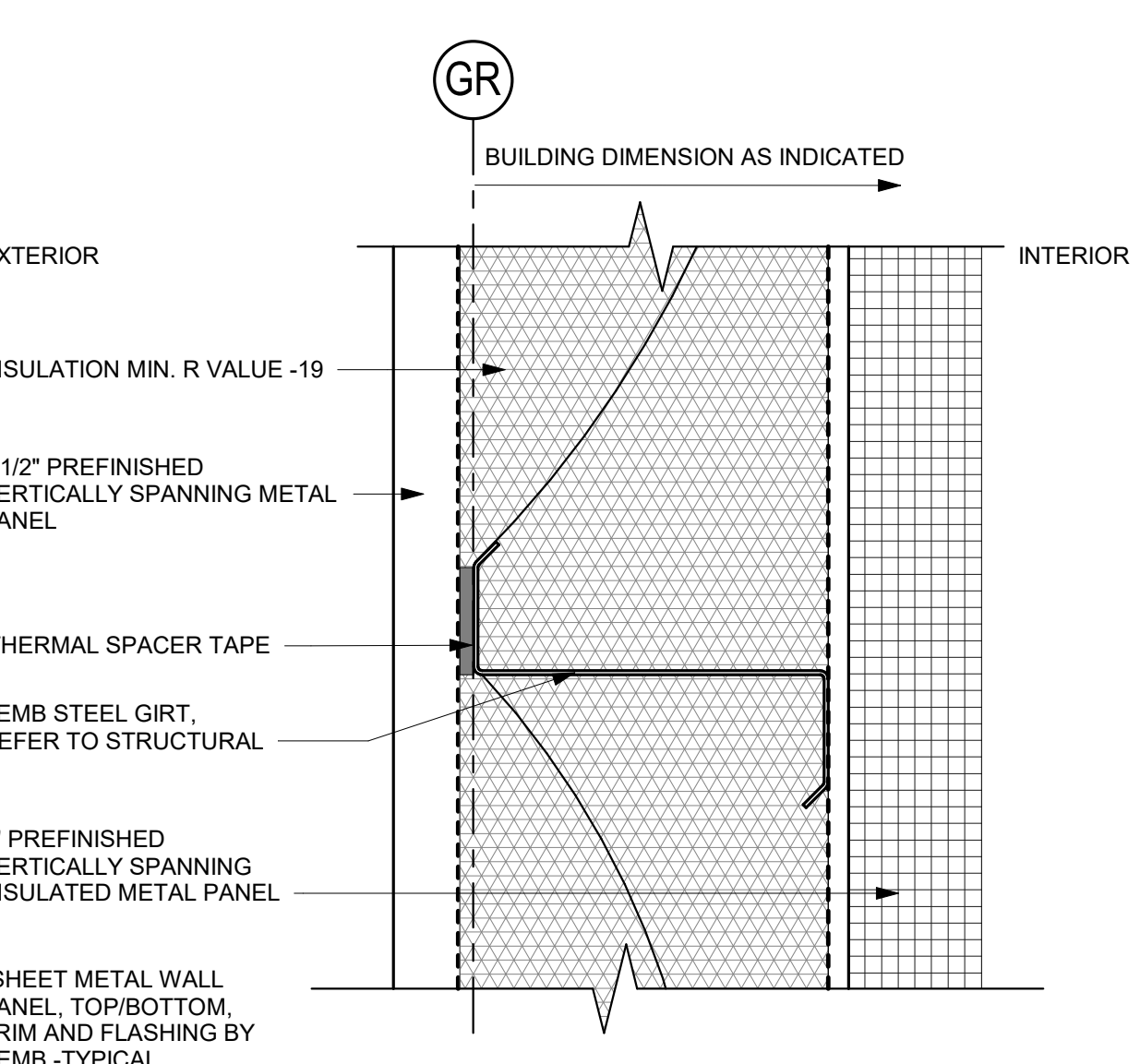
A3 EXTERIOR WALL ASSEMBLY, MP-3
SCALE 3" = 1'-0"



A4 OVEN WALL ASSEMBLY, MP-5
SCALE 3" = 1'-0"



B5 EXTERIOR MTL STUD WALL ASSEMBLY, MP-7
SCALE 3" = 1'-0"



A5 EXTERIOR/ OVEN WALL ASSEMBLY, MP-6
SCALE 3" = 1'-0"

Campus Standard Details
Camden OSD
Calhoun County, Arkansas
Aerojet Rocketdyne

ARCHITECTURE
EXTERIOR ASSEMBLIES

SHEET NO
A-800

SCALE As indicated
DATE 09/18/24
PROJ D37545N0
DWG