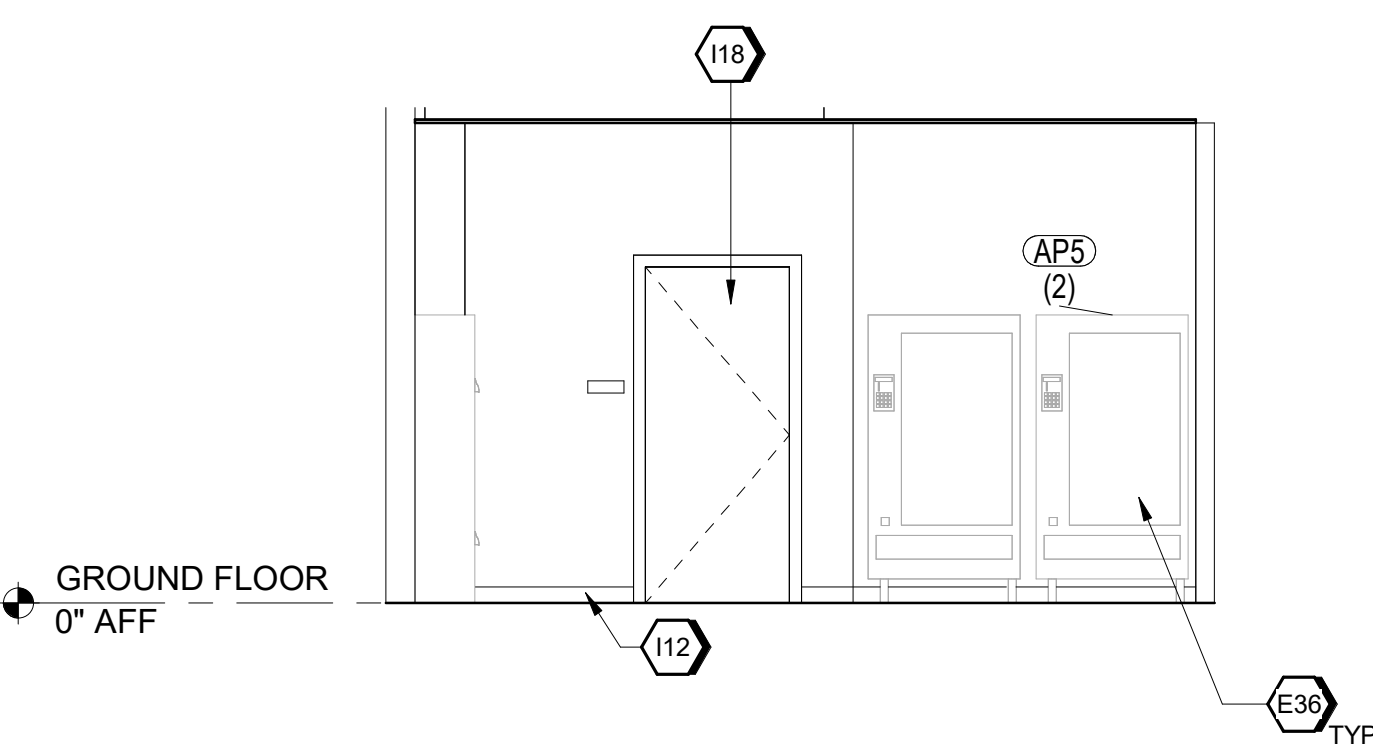
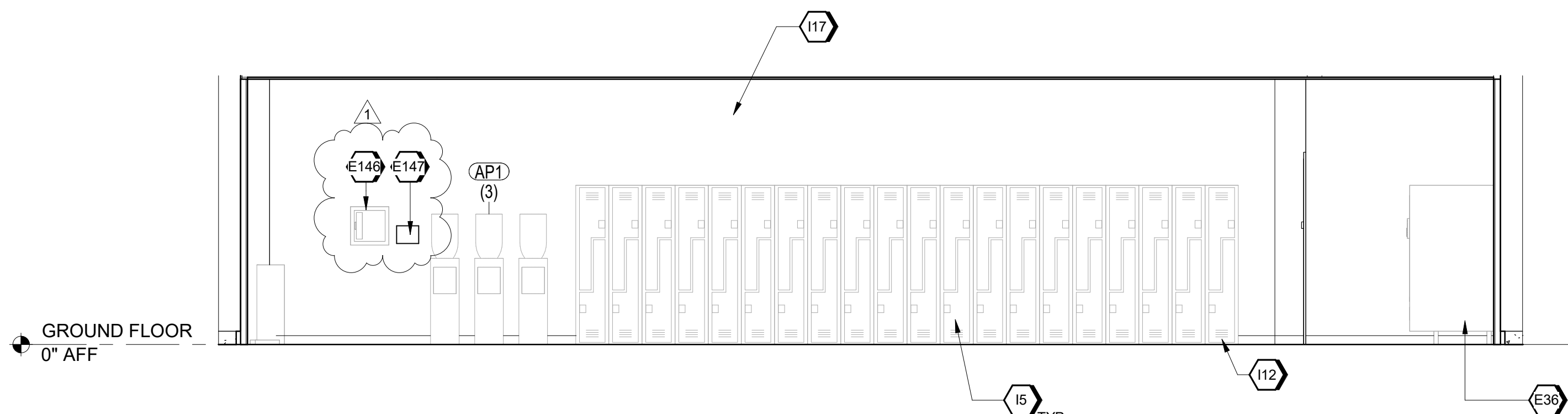


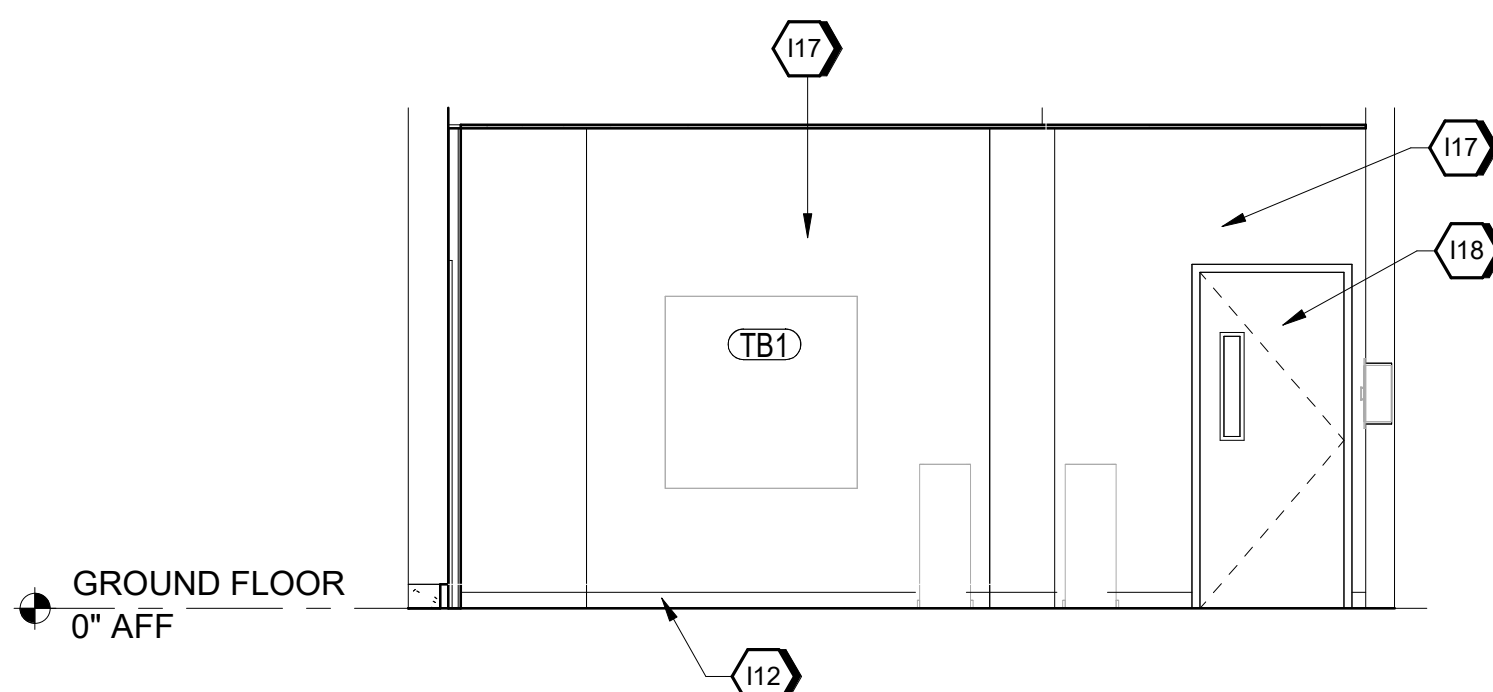
D1 AUTOMATION CONTROL ROOM - INTERIOR ELEVATION  
SCALE 1/4" = 1'-0"



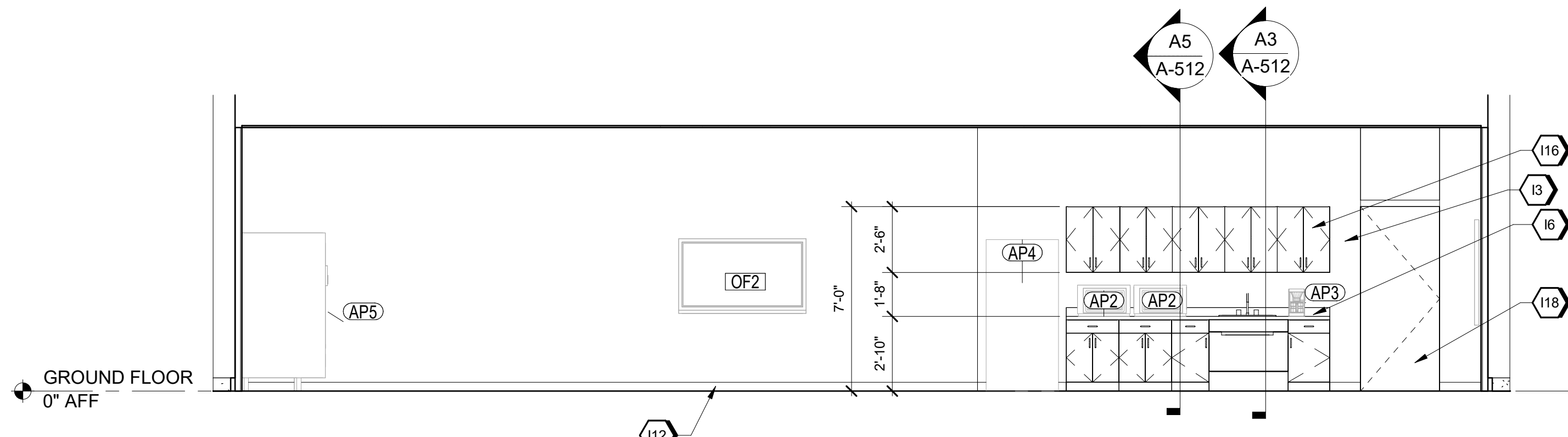
C1 BREAK ROOM - INTERIOR ELEVATION - VENDING MACHINES  
SCALE 1/4" = 1'-0"



B1 BREAK ROOM - INTERIOR ELEVATION - LOCKERS  
SCALE 1/4" = 1'-0"



A1 BREAK ROOM - INTERIOR ELEVATION - NORTH  
SCALE 1/4" = 1'-0"



A3 BREAK ROOM - INTERIOR ELEVATION - KITCHENETTE  
SCALE 1/4" = 1'-0"

### #)SHEET KEYNOTES

- E36 VENDING MACHINE, GRGI  
E146 AED EMERGENCY SEMI-RECESSED CABINET (CFCI)  
E147 FIRST AID KIT (CFCI)  
I3 ACCENT PAINT, PT-3, REFER TO I-601 FOR FINISH LEGEND  
I5 INSTALL DOUBLE TIERED LOCKERS, LK-1 AS SCHEDULED, REFER TO I-601 FOR FINISH LEGEND, CFCI  
I6 SSM-1 COUNTER AND 4" BACKSPLASH AS SCHEDULED, REFER TO I-601 FOR FINISH LEGEND  
I7 INSTALL WALL BLOCKING FOR WALL HUNG EQUIPMENT  
I12 INSTALL BASE AS SCHEDULED, REFER TO ROOM FINISH SCHEDULE ON I-601  
I16 P-LAM CABINETS, PL-1, REFER TO FINISH SCHEDULE ON I-601  
I17 PAINT WALL AS SCHEDULED  
I18 PAINT DOORS AND FRAMES TO MATCH PT-2, REFER TO FINISH SCHEDULE ON I-601

### LEGEND

FF&E - CFCI	
MARK	DESCRIPTION
AP1	WATER COOLER
AP2	MICROWAVE
AP3	COFFEE POT
AP4	REFRIGERATOR
AP5	VENDING MACHINE
AP6	TRASH BIN
CH1	CHAIR, BREAKROOM
CH2	CHAIR, TASK
CH3	CHAIR, CONFERENCE
D1	DESK, L-SHAPED LEFT RETURN
MB1	MARKERBOARD - LARGE
ST1	STORAGE, WARDROBE
ST2	STORAGE, HEAVY DUTY SHELVING
T1	TABLE, BREAKROOM
T2	TABLE, CONFERENCE
TB1	TACKBOARD
WS1	WORKSTATION, L-SHAPED

### GRAPHIC SCALE(S)



**Jacobs**

1895 Bayview Drive, Suite 3000  
Ft. Worth, TX 76104  
Entry: Jacobs Consultants Inc.  
License Type: Architecture  
License Exp. Date: 03/31/2025

REVISION		DATE	BY	CHK	APPV	TM
1	10/03/2024	ADDERUM 1 - EXPANSION	MUS	TM		
0	09/18/2024	100% ISSUED FOR CONSTRUCTION - EXPANSION	MUS	TM		
DESIGN						
DR						
MBRP						

GMLRS  
Camden OSD  
Calhoun County, Arkansas  
Aerojet Rocketdyne

ARCHITECTURE  
INTERIOR ELEVATIONS

SHEET NO	
A-211	
SCALE	1/4" = 1'-0"
DATE	09/18/2024
PROJ	D3754502
DWG	CHEN-002, GMLRS, A-211