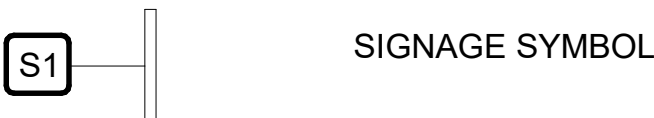
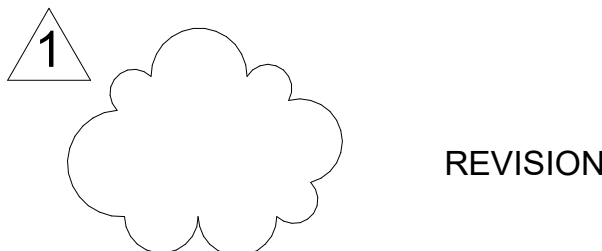
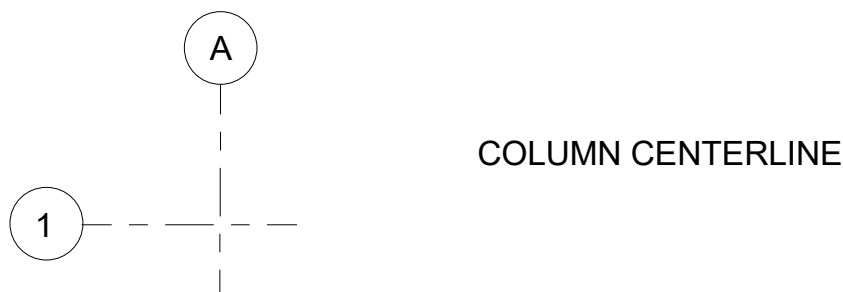
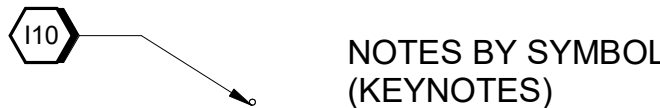
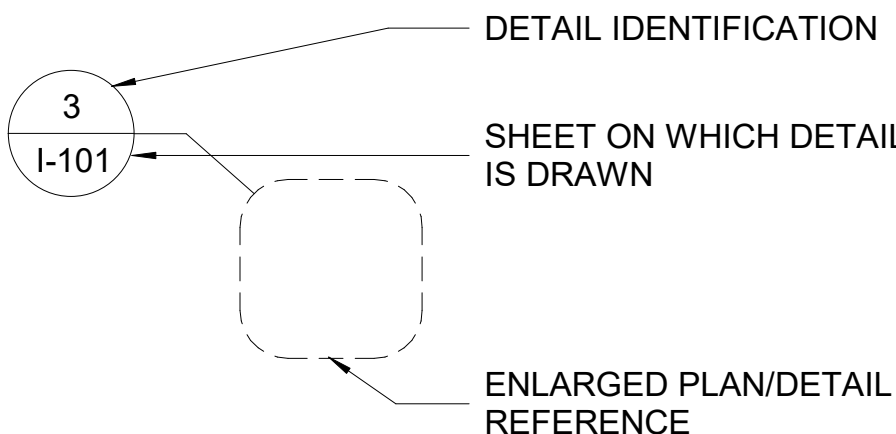
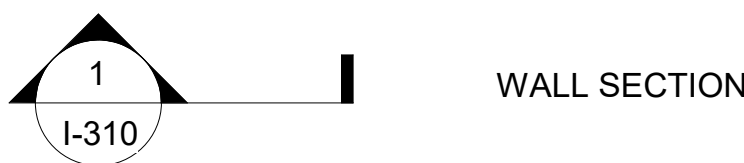
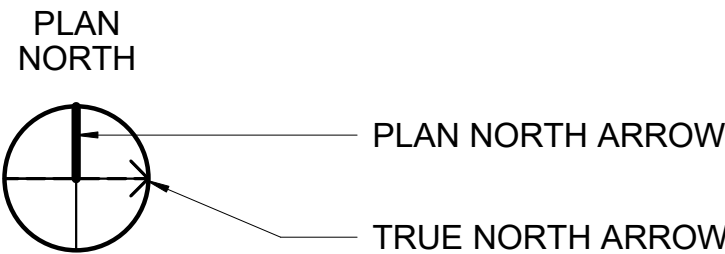
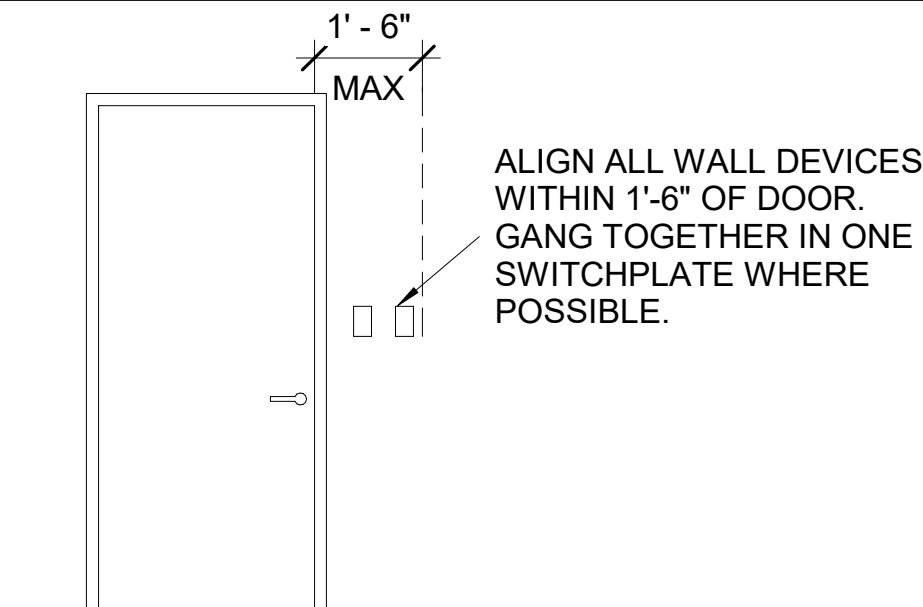


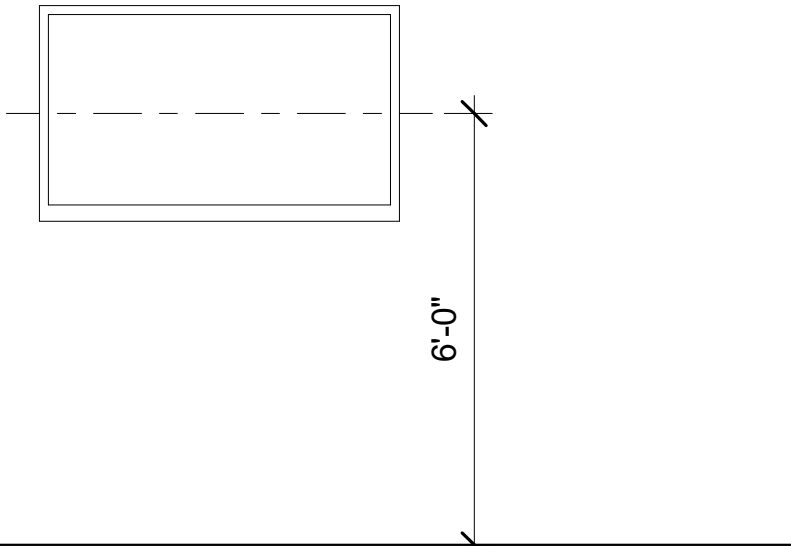
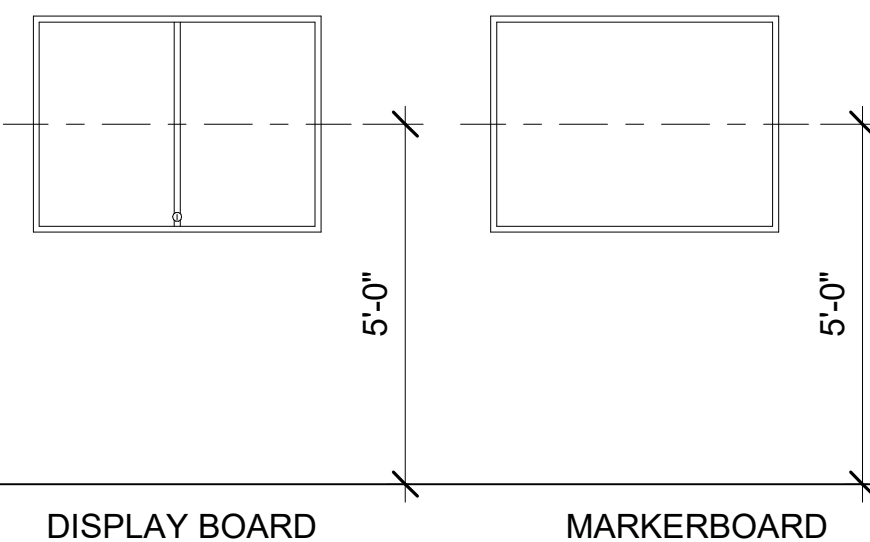
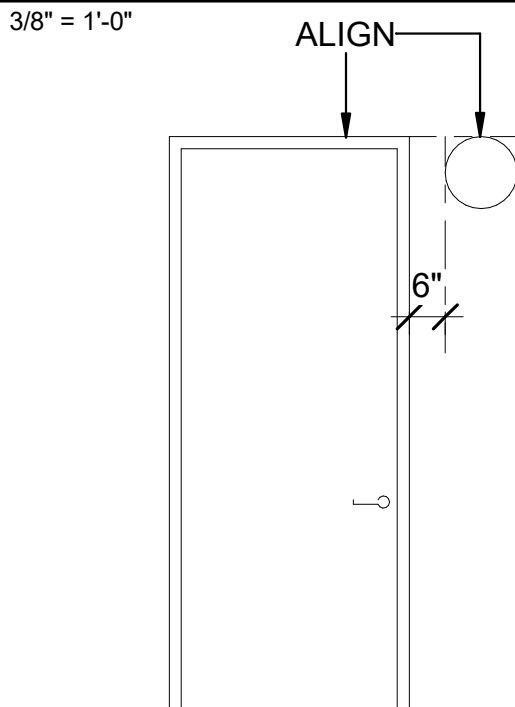
GENERAL NOTES



- A VERIFY AND DOCUMENT CONDITIONS AND DIMENSIONS ON THE JOB SITE BEFORE BEGINNING CONSTRUCTION.
- B DO NOT SCALE THE DRAWINGS FOR CONSTRUCTION PURPOSES.
- C VERIFY SIZE, LOCATIONS AND CHARACTERISTICS OF ALL EQUIPMENT TO BE FURNISHED WITH MANUFACTURERS OR SUPPLIERS BEFORE BEGINNING CONSTRUCTION.
- D VERIFY SIZE AND LOCATION OF ALL OPENINGS FOR EQUIPMENT AND RELATED WORK.
- E ALL PLAN DIMENSIONS ARE TO FACE OF GYPSUM BOARD, FACE OF BRICK, FACE OF CONCRETE MASONRY UNITS OR CENTERLINE OF COLUMNS, UNLESS OTHERWISE NOTED.
- F REFER TO ARCHITECTURAL, MECHANICAL, PLUMBING AND ELECTRICAL DRAWINGS FOR ADDITIONAL INFORMATION AND COORDINATION.

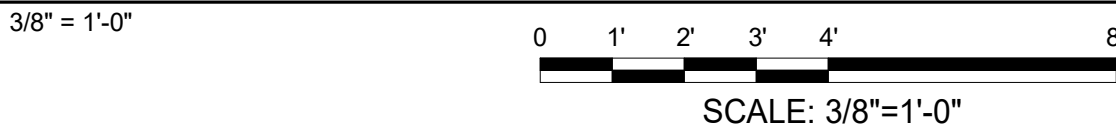


TYPICAL WALL DEVICE LOCATION



FLATSCREEN TV

MOUNTING HEIGHTS UON

[illegible]

Jacobs
999 Bryan Street Suite 3500 Dallas, TX 75201
Tel: 214-638-0145 Fax: 214-638-0447
Entity: Jacobs Consultants Inc.
License Type: Architecture
License #: C226
Exp. Date: 01/31/2025



Control Room 2
Camden OSD
Calhoun County, Arkansas
Aerojet Rocketdyne



INTERIOR GENERAL NOTES AND DETAILS

SHEET NO.

I-001

SCALE	As indicated
DATE	09/18/2024
PROJ	D3754502
DWG	CMDN-OSD_Control-Room-2_I-001

PLOT DATE/TIME: 9/18/2024 8:49:27 AM