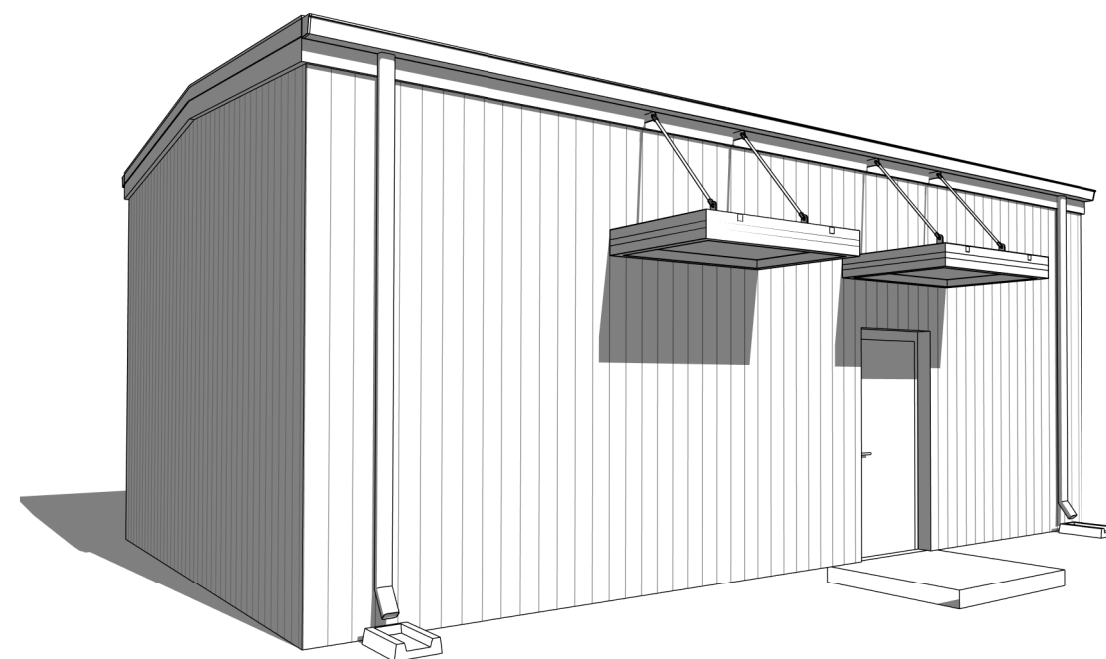




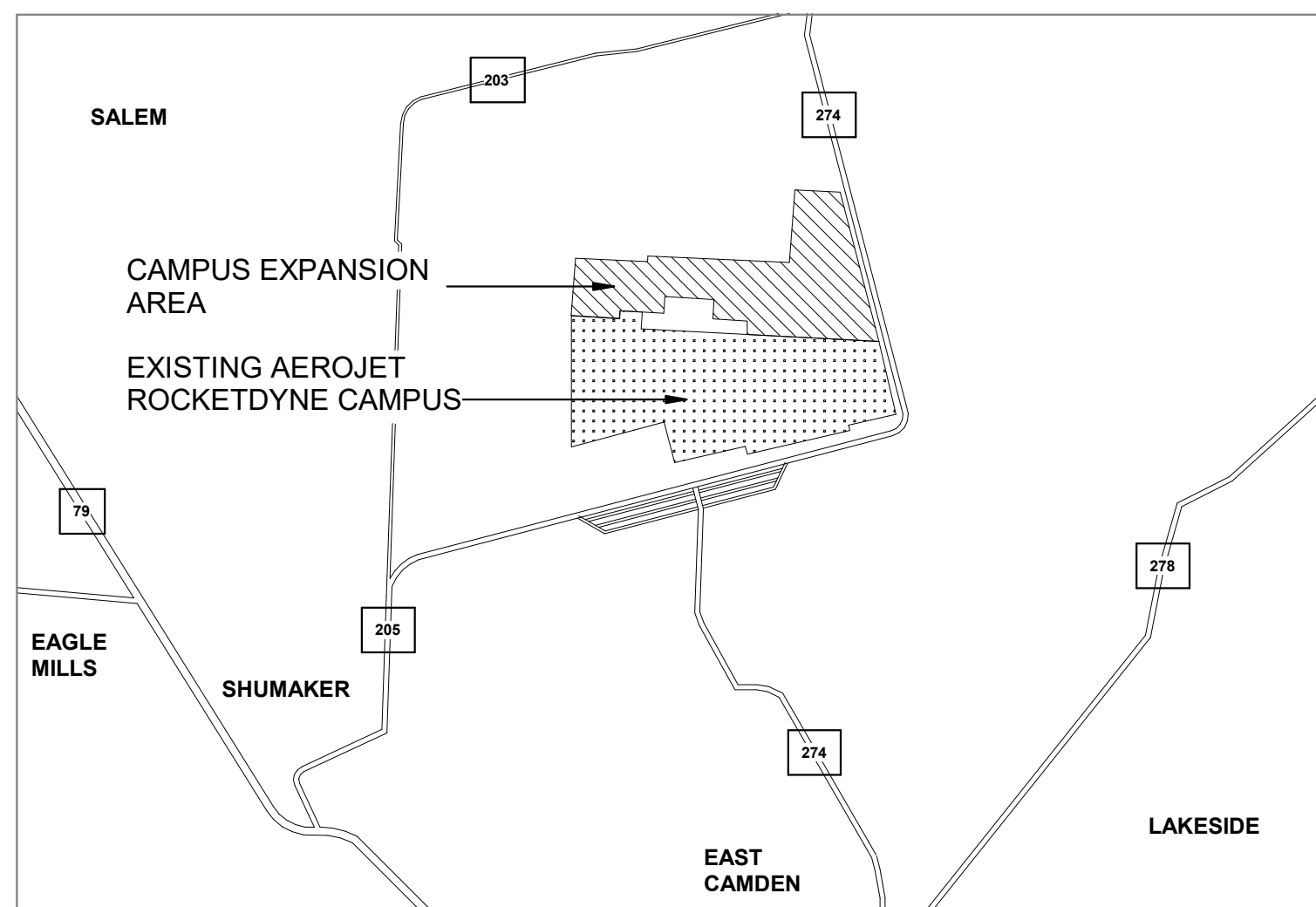
Control Room 2

Aerojet Rocketdyne
Camden OSD
Calhoun County, Arkansas

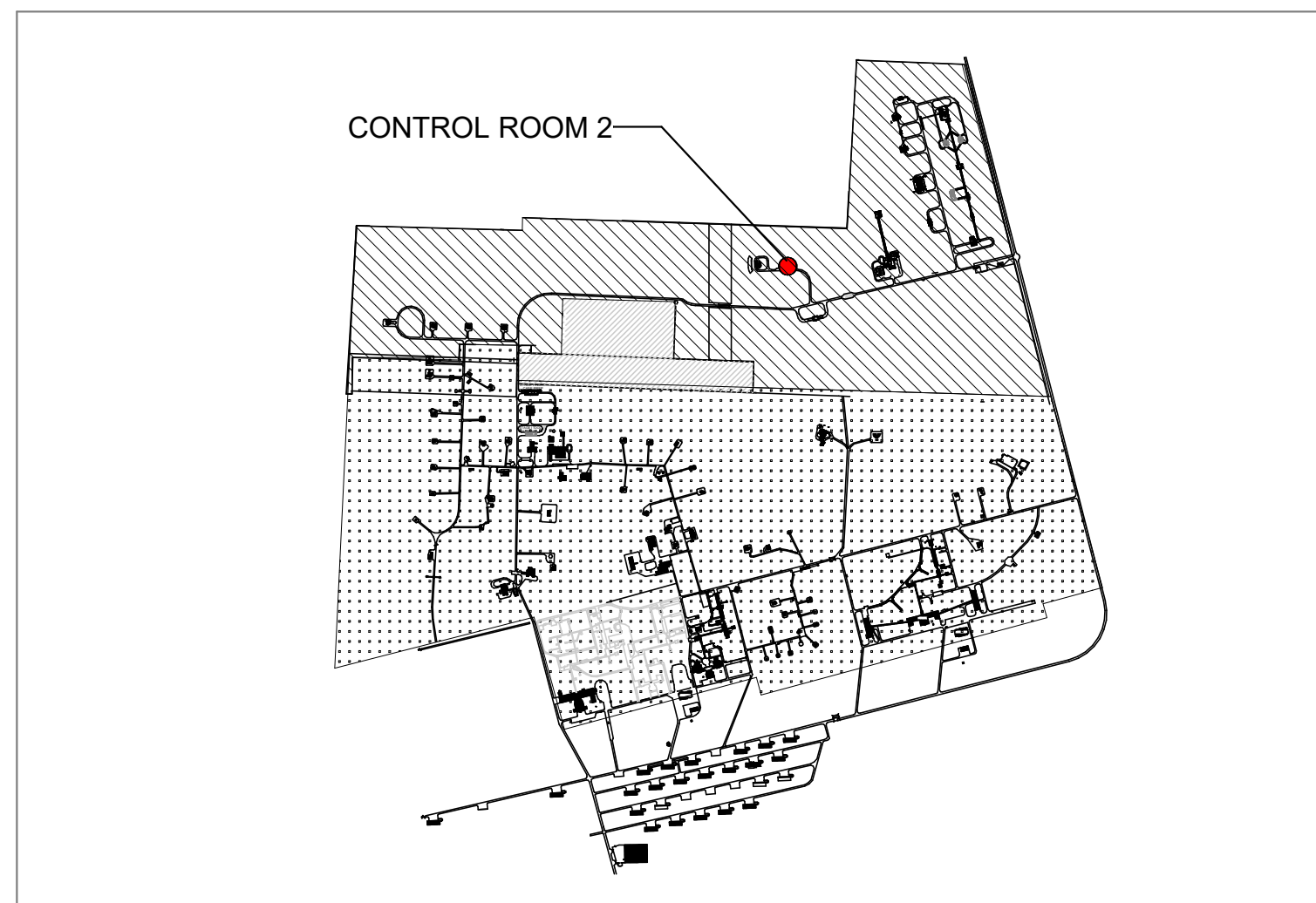


DPA III SITE EXPANSION -100% ISSUED FOR CONSTRUCTION

SEPTEMBER 18, 2024



LOCATION MAP



VICINITY MAP

GENERAL SHEET NOTES

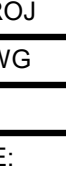
- PRE-ENGINEERED METAL BUILDING (PEMB) SYSTEMS ARE THE DESIGN INTENT FOR BUILDING STRUCTURE, ENVELOPE, PENETRATIONS, AND ALL ASSOCIATED COMPONENTS FOR FACILITIES INDICATED IN ACCORDANCE WITH THE DIVISION 13 METAL BUILDING OF THE SPECIFICATIONS.
- THE PEMB MANUFACTURER WILL INCORPORATE ALL BUILDING CODE, INDUSTRY STANDARDS, AND OWNER DIRECTED REQUIREMENTS INTO THE DESIGN AND CONSTRUCTION OF THE INDICATED FACILITIES.
- ALL BUILDING MATERIALS ARE NEW AND PROVIDED BY THE PEMB MANUFACTURER.
- VERIFY ALL FIELD CONDITIONS AND DIMENSIONS PRIOR TO PROCEEDING WITH THE WORK. ALL DISCREPANCIES MUST BE BROUGHT TO THE IMMEDIATE ATTENTION OF THE ARCHITECT IN WRITING. OVERALL DIMENSIONS INDICATED ARE TO EXTERIOR FACE OF STRUCTURAL GIRT FRAMING, UNLESS OTHERWISE NOTED.
- STUDY AND COMPARE THE CONTRACT DOCUMENTS WITH EACH OTHER AND AT ONCE, REPORT TO THE ARCHITECT ANY ERRORS, INCONSISTENCIES OR OMISSIONS DISCOVERED.
- DO NOT SCALE THE DRAWINGS FOR CONSTRUCTION PURPOSES.
- VERIFY SIZE, LOCATION, AND CHARACTERISTICS OF ALL EQUIPMENT WITH THE OWNER, MANUFACTURERS, AND SUPPLIERS BEFORE BEGINNING CONSTRUCTION.
- REFER TO A800-SERIES SHEETS FOR TYPICAL CAMPUS EXTERIOR ASSEMBLIES UTILIZED AT EACH BUILDING IN THIS PROJECT SCOPE.
- REFER TO A800-SERIES DRAWINGS FOR TYPICAL CAMPUS DETAILS UTILIZED AT EACH BUILDING IN THIS PROJECT SCOPE.
- FINISH FLOOR ELEVATION OF 0' IS A RELATIVE ELEVATION USED FOR DESIGN COORDINATION, REFER TO CIVIL ENGINEERING DRAWINGS FOR ACTUAL TOPOGRAPHIC ELEVATIONS OF EACH BUILDING, TOPOGRAPHIC ELEVATIONS VARY BETWEEN BUILDINGS.
- REFER TO CIVIL FOR SITE ORIENTATION ON ALL BUILDINGS.

SHEET INDEX

NO	SHEET NAME
10 GENERAL	
G-001	GENERAL - COVER SHEET AND SHEET INDEX
G-101	GENERAL - LIFE SAFETY PLAN AND CODE REQUIREMENTS
70 STRUCTURAL	
SB101	STRUCTURAL - FOUNDATION PLAN
S-501	STRUCTURAL - FOUNDATION SECTIONS
80 ARCHITECTURE	
AE101	ARCHITECTURE - FLOOR, ROOF, EQUIPMENT AND REFLECTED CEILING PLANS
A-103	ARCHITECTURE - ENLARGED FLOOR PLAN AND ELEVATIONS
A-201	ARCHITECTURE - EXTERIOR ELEVATIONS
A-301	ARCHITECTURE - BUILDING SECTIONS
A-311	ARCHITECTURE - WALL SECTIONS
A-601	ARCHITECTURE - DOOR SCHEDULES
A-900	ARCHITECTURE - AXONOMETRIC VIEWS
90 INTERIORS	
I-001	INTERIOR - GENERAL NOTES AND LEGENDS
IN101	INTERIOR - FINISH AND SIGNAGE PLANS
I-601	INTERIOR - FINISH MATERIAL LEGEND AND SCHEDULE
I-602	INTERIOR - SIGNAGE SCHEDULE AND DETAILS
130 PLUMBING	
P-001	PLUMBING - GENERAL NOTES AND SYMBOLS
P-100	PLUMBING - GROUND FLOOR AND ROOF PLAN
P-701	PLUMBING - SCHEDULES
150 MECHANICAL	
M-001	MECHANICAL - GENERAL NOTES AND ABBREVIATIONS
M-002	MECHANICAL - SYMBOLS
M-101	MECHANICAL - FLOOR PLAN AND HVAC ZONE MAP
M-301	MECHANICAL - SECTIONS AND ISOMETRIC VIEW
M-701	MECHANICAL - SCHEDULES
160 ELECTRICAL	
EP101	ELECTRICAL - POWER, GROUNDING, LIGHTING PLAN AND ONE-LINE DIAGRAM
E-710	ELECTRICAL - PANEL SCHEDULES
170 TELECOMMUNICATION	
T-001	TELECOMMUNICATION - GENERAL NOTES, ABBREVIATIONS AND SYMBOLS
T-101	TELECOMMUNICATION - SITE PLAN
T-102	TELECOMMUNICATION - OVERALL GROUND FLOOR PLAN
T-601	TELECOMMUNICATION - ONE-LINE DIAGRAM
180 SECURITY	
TY001	SECURITY - GENERAL NOTES, ABBREVIATIONS AND SYMBOLS
TY101	SECURITY - SYSTEM DEVICE LAYOUT FLOOR PLAN
TY501	SECURITY - INSTALLATION DETAILS
TY601	SECURITY - ONE-LINE DIAGRAM



Control Room 2
Camden OSD
Calhoun County, Arkansas
Aerojet Rocketdyne



SHEET NO	G-001
SCALE	As indicated
DATE	09/18/2024
PROJ	D3754502
DWG	CMDN-OSD_ControlRoom2_G-001