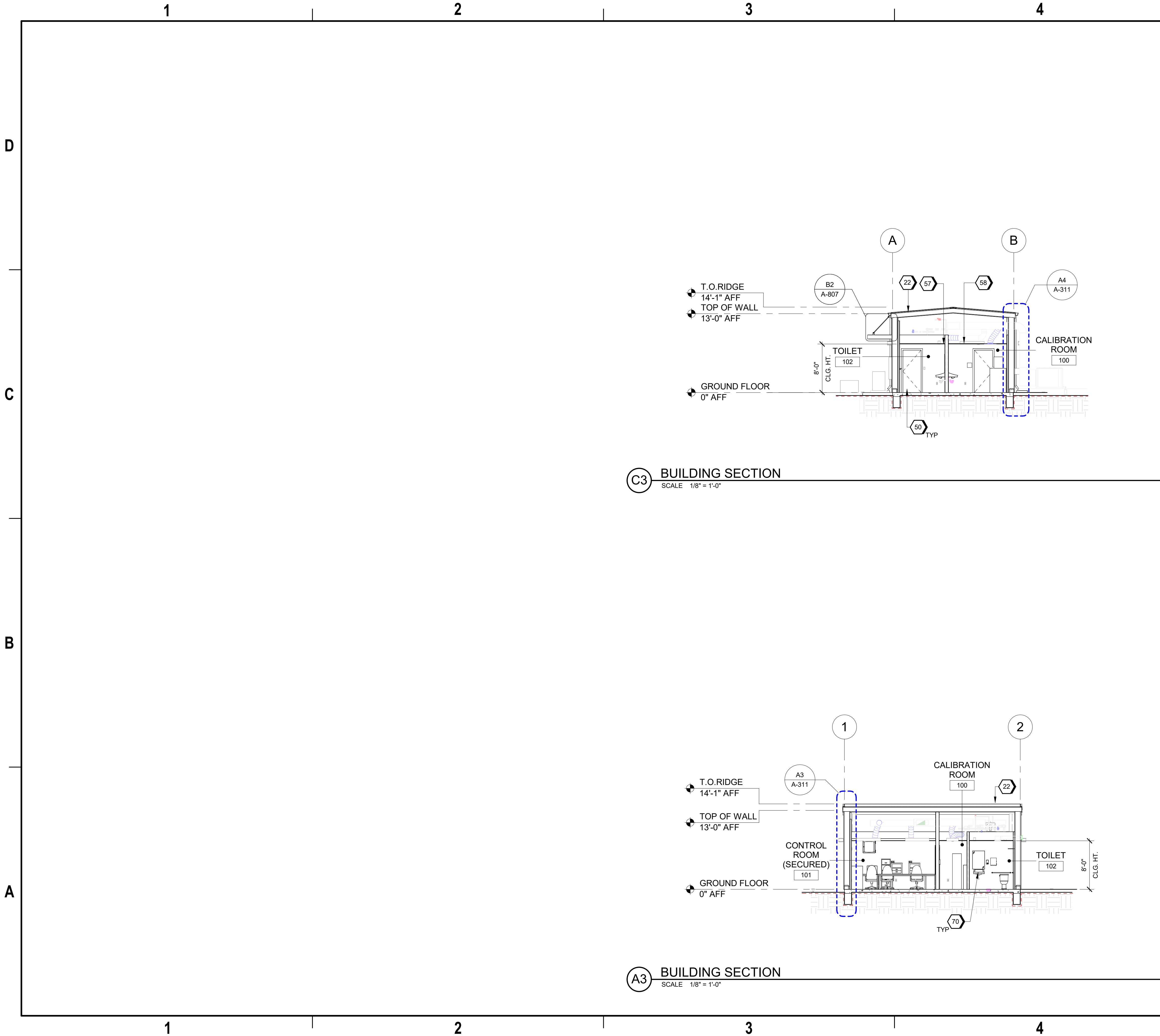


9/18/2024 9:29:42 AM A-301
Autodesk Docs/US_D3754502_FED_Aerojet Rocketdyne/D3754502_CIMDN_OSD_ControlRoom2_ARCH-INT.rvt

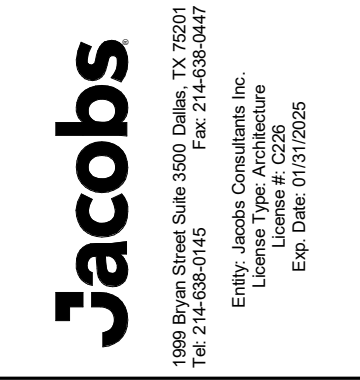


GENERAL SHEET NOTES

- SPACES LABELED 'SECURED' TO BE BUILT AS CLOSED AREAS PER NATIONAL INDUSTRIAL SECURITY PROGRAM OPERATING MANUAL (NISPOM) STANDARDS, 32 CFR PART 117 AND 32 CFR 2001.53.
- FOR ARCHITECTURAL GENERAL NOTES, SYMBOLS, AND LEGEND, REFER TO DRAWING G-002.
- FOR BUILDING CODE DATA AND LIFE SAFETY PLAN, REFER TO DRAWING G-101.
- FURNITURE AND EQUIPMENT IS SHOWN FOR DISCIPLINE COORDINATION ONLY.

#SHEET KEYNOTES

- PEMB: SHEET METAL ROOFING, RIDGE CAP, RAKE & EAVE TRIM AND FLASHING - TYPICAL
- INSULATED HM DOOR AND FRAME AS SCHEDULED
- GYP BD CEILING
- ACOUSTICAL CEILING AS SCHED.
- TOILET FIXTURES AND ACCESSORIES



Control Room 2
Camden OSD
Calhoun County, Arkansas
Aerojet Rocketdyne

Jacobs **ARCHITECTURE**
ARCHITECTURE
BUILDING SECTIONS

GRAPHIC SCALE(S)



SHEET NO		A-301
SCALE	As indicated	
DATE	09/18/2024	
PROJ	D3754502	
DWG	CIMDN-OSD_ControlRoom2_A-301	