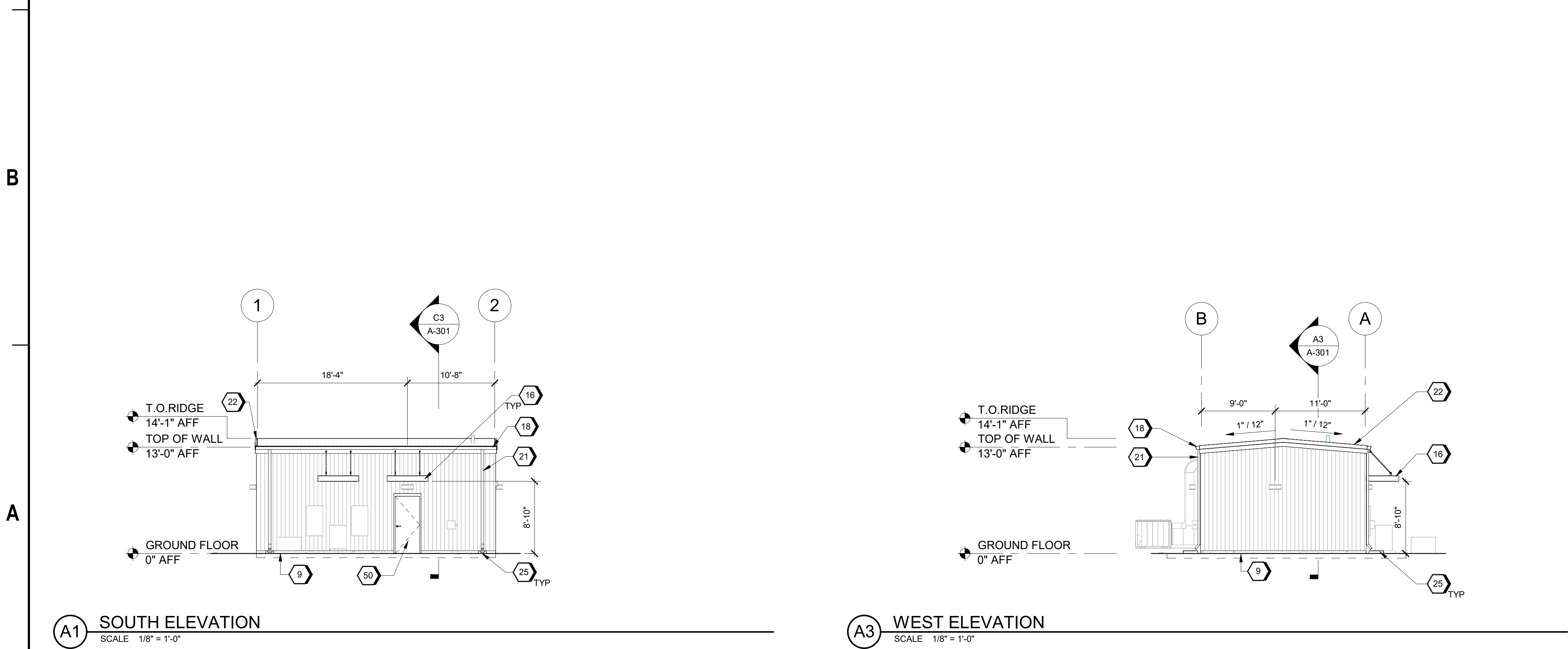
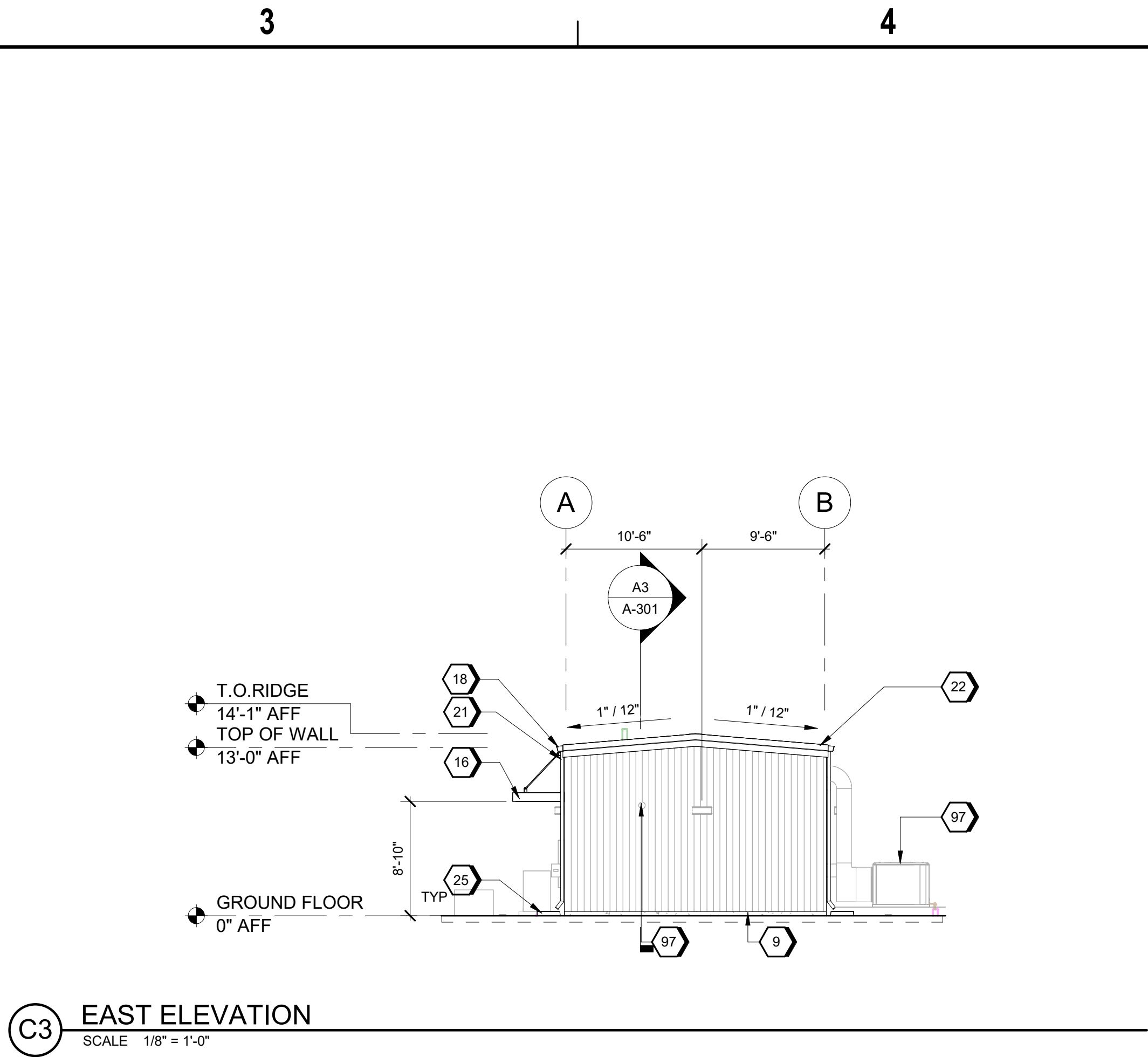
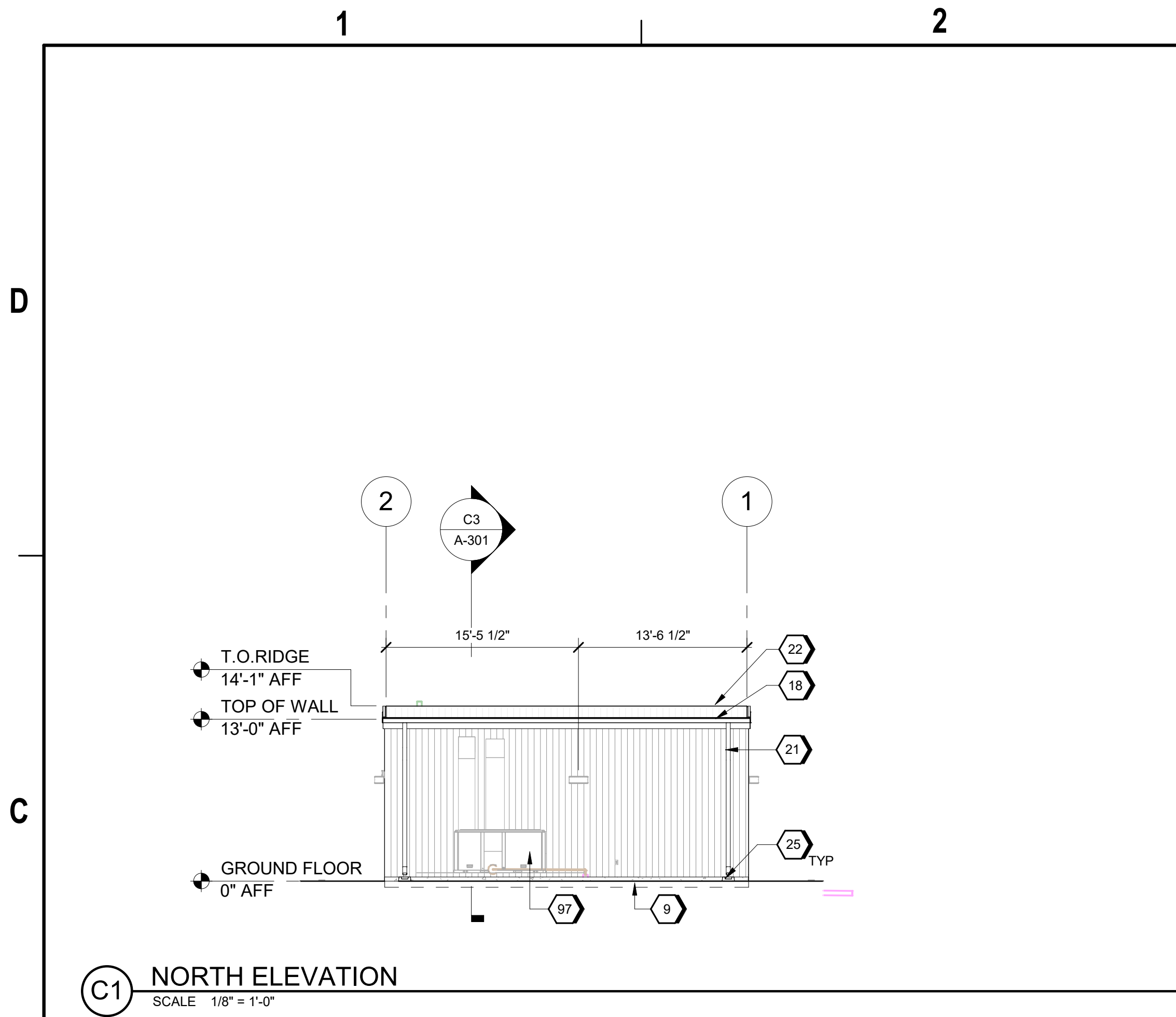


9/18/2024 9:29:41 AM A-201
Autodesk Docs\US D3754502_FED_Aerojet Rocketdyne\B3754500_CADD_C3D_ControlRoom2_ARCH-INT.rvt



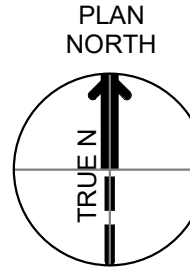
GENERAL SHEET NOTES

- A. FINISHED FLOOR ELEVATION 0'-0" IS A REFERENCE ELEVATION FOR COORDINATION WITH BUILDING ELEMENTS. ACTUAL ELEVATION IS INDICATED ON CIVIL DRAWINGS
- B. FOR ARCHITECTURAL GENERAL NOTES, SYMBOLS, AND LEGEND, REFER TO DRAWING G-002.
- C. FOR BUILDING CODE DATA AND LIFE SAFETY PLAN, REFER TO DRAWING G-101.
- D. REFER TO EQUIPMENT PLAN SHEET FOR FURNITURE AND EQUIPMENT.
- E. SPACES LABELED 'SECURED' TO BE BUILT AS CLOSED AREAS PER NATIONAL INDUSTRIAL SECURITY PROGRAM OPERATING MANUAL (NISPOM) STANDARDS, 32 CFR PART 117 AND 32 CFR 2001.53.
- F. REFER TO CAMPUS DETAILS SHEET FOR PARTITION TYPES
- G. REFER TO ELECTRICAL FOR LIGHTING PROTECTION.
- E. FOR ARCHITECTURAL ROOF AND WALL ASSEMBLY, REFER TO SHEET A-800

#)SHEET KEYNOTES

- 9 CONCRETE BASE
- 18 PRE-FABRICATED METAL CANOPY
- 18 CONT. METAL GUTTER 5" DEEP X 6" WIDE. COLOR TO MATCH THE BUILDING
- 21 PEMB: SHEET METAL DOWNSPOUT AND BRACKETS -TYP. 5" DIAMETER. COLOR TO MATCH THE BUILDING
- 22 PEMB: SHEET METAL ROOFING, RIDGE CAP, RAKE & EAVE TRIM AND FLASHING - TYPICAL
- 25 PRECAST CONCRETE RAINWATER SPLASH BLOCK AT EACH DOWNSPOUT DISCHARGE; PLACE ON FINISH GRADE; SLOPE DOWN AWAY FROM BUILDING-TYPICAL
- 50 INSULATED HM DOOR AND FRAME AS SCHEDULED
- 97 MECHANICAL EQUIPMENT - TYPICAL

GRAPHIC SCALE(S)



0	09/18/2024	100% ISSUED FOR CONSTRUCTION - EXPANSION	IE	TM	APVD	TM
0	DATE	REVISION	CHK	NDYA	DR	IE
DSGN	NO.	NO.	NO.	NO.	NO.	NO.

Jacobs
1889 Bryan Street Suite 500, Dallas, TX 75201
Tel: 214-638-0145 Fax: 214-638-0447
Entity: Jacobs Consultants Inc.
License: Professional Engineer
Exp. Date: 01/31/2025

REGISTERED ARCHITECT
CHRIS ALFSTAD
812327
STATE OF ARKANSAS
09/18/2024

Control Room 2
Camden OSD
Calhoun County, Arkansas
Aerojet Rocketdyne

Jacobs **ARCHITECTURE**
EXTERIOR ELEVATIONS

SHEET NO
A-201

SCALE As indicated
DATE 09/18/2024
PROJ D3754502
DWG CADD-C3D_ControlRoom2_A-201

PLOT DATE/TIME: 9/18/2024 9:29:41 AM