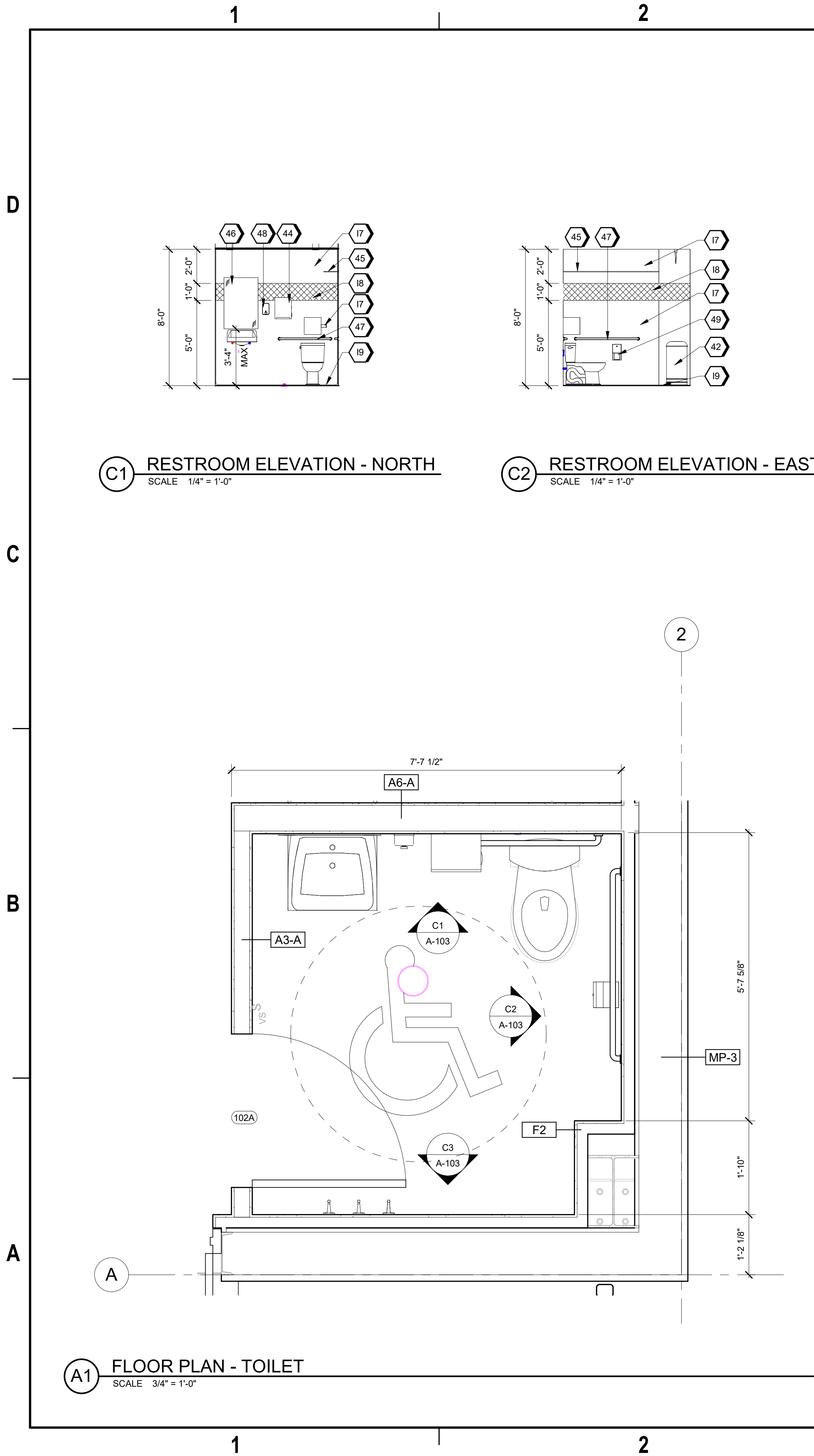


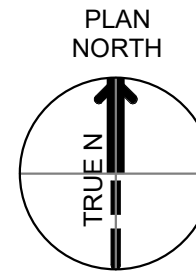
9/18/2024 9:29:39 AM A-103 Autodesk Docs://US_D3754500_FED_Aerojet Rocketdyne/D3754500_CIMDN_OSD_ControlRoom2_ARCH-INT.rvt



#SHEET KEYNOTES

- 42 WASTE RECEPTACLE; RESTROOM ACCESSORIES - TYPICAL
43 COAT HOOKS; RESTROOM ACCESSORIES - TYPICAL
44 SURFACE MOUNTED PAPER TOWEL DISPENSER; RESTROOM ACCESSORIES-TYPICAL
45 SHELF ABOVE; 12"; RESTROOM ACCESSORIES - TYPICAL
46 MIRROR OVER LAVATORY; REFLECTING SURFACE 40" AFF MAX; RESTROOM ACCESSORIES - TYPICAL
47 GRAB BAR; RESTROOM ACCESSORIES - TYPICAL
48 SURFACE MOUNTED SOAP DISPENSER; RESTROOM ACCESSORIES - TYPICAL
49 SURFACE MOUNTED TOILET PAPER DISPENSER; RESTROOM ACCESSORIES - TYPICAL
17 PWT-1; FIELD WALL TILE; REFER TO FINISH SCHEDULE ON I-601
18 PWT-2; ACCENT WALL TILE; REFER TO FINISH SCHEDULE ON I-601
19 MCB-1 AS SCHEDULED; REFER TO FINISH SCHEDULE ON I-601

GRAPHIC SCALE(S)



JACOBS		REGISTERED ARCHITECT		CHRIS ALFSTAD		8123221		09/18/2024		SEA	
1888 Bryan Street Suite 3500 Dallas, TX 75201 Tel: 214-638-0145 Fax: 214-638-0447 Entity: Jacobs Consultants Inc. License: State of Arkansas Exp. Date: 01/31/2025		Control Room 2 Camden OSD Calhoun County, Arkansas Aerojet Rocketdyne		ARCHITECTURE ENLARGED FLOOR PLAN AND ELEVATIONS		SHEET NO A-103		SCALE As indicated		DATE 09/18/2024	
PROJ D3754502		DWG CIMDN-OSD_ControlRoom2_A-103		REVISION		NO.		DATE		BY	
100% ISSUED FOR CONSTRUCTION-EXPANSION		100% ISSUED FOR CONSTRUCTION-EXPANSION		100% ISSUED FOR CONSTRUCTION-EXPANSION		100% ISSUED FOR CONSTRUCTION-EXPANSION		100% ISSUED FOR CONSTRUCTION-EXPANSION		100% ISSUED FOR CONSTRUCTION-EXPANSION	
DESIGN		IE		DR		NDYA		CHK		BH	
APVD		APVD		APVD		APVD		APVD		APVD	
TM		TM		TM		TM		TM		TM	

© Jacobs Solutions 2022. ALL RIGHTS RESERVED.
THIS DOCUMENT IS THE PROPERTY OF JACOBS CONSULTANTS INC. AND IS NOT TO BE REPRODUCED OR TRANSMITTED IN ANY FORM OR BY ANY MEANS, ELECTRONIC OR MECHANICAL, WITHOUT THE WRITTEN AUTHORIZATION OF JACOBS.