

1

2

3

4

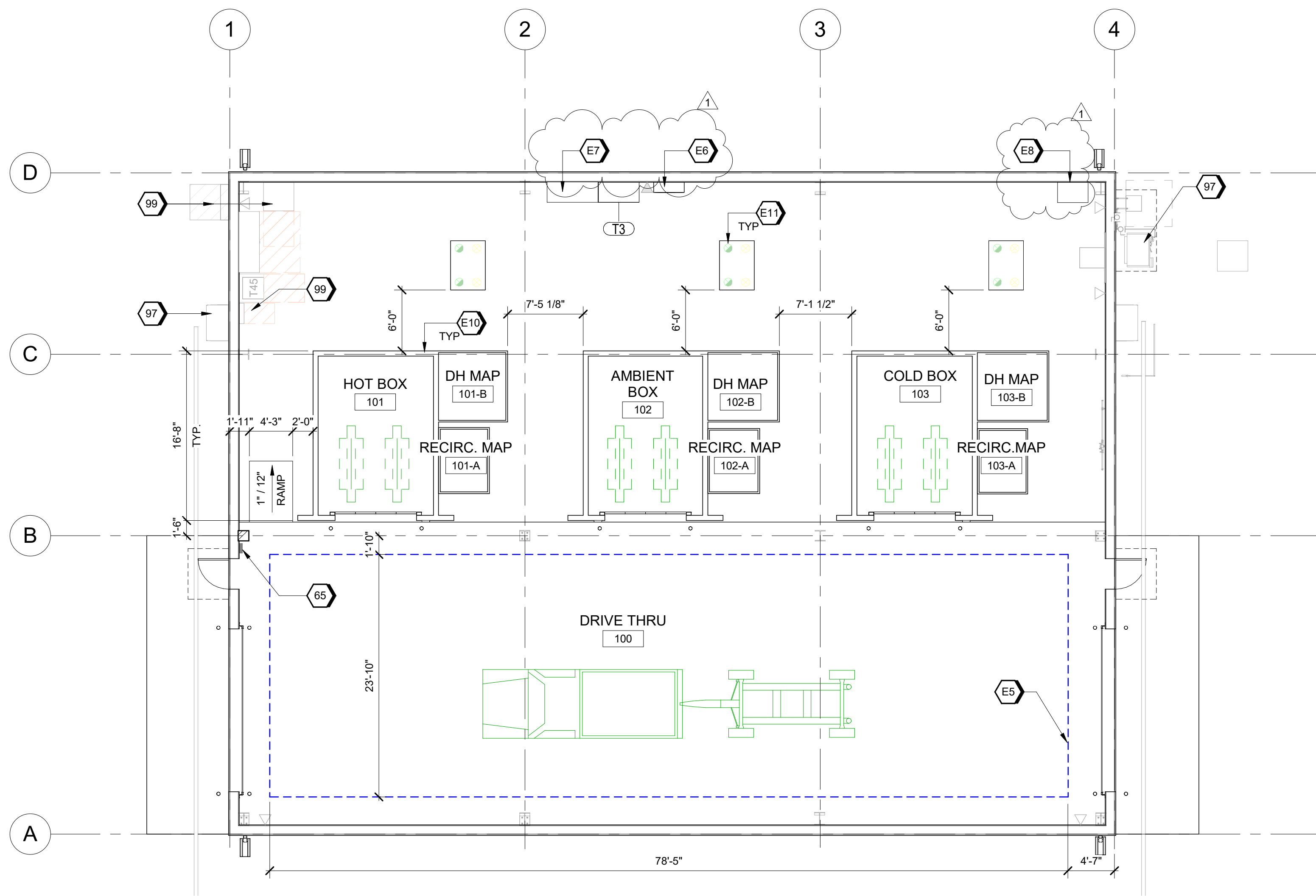
5

D

C

B

A



A1 EQUIPMENT PLAN
 SCALE 1/8" = 1'-0"

GENERAL SHEET NOTES

- A. FINISHED FLOOR ELEVATION 0'-0" IS A REFERENCE ELEVATION FOR COORDINATION WITH BUILDING ELEMENTS. ACTUAL ELEVATION IS INDICATED ON CIVIL DRAWINGS
- B. FOR ARCHITECTURAL GENERAL NOTES, SYMBOLS, AND LEGEND, REFER TO DRAWING G-002.
- C. FOR BUILDING CODE DATA AND LIFE SAFETY PLAN, REFER TO DRAWING G-101.
- D. REFER TO EQUIPMENT PLAN SHEET FOR FURNITURE AND EQUIPMENT.
- E. REFER TO ELECTRICAL FOR LIGHTING PROTECTION.
- F. FOR ARCHITECTURAL ROOF AND WALL ASSEMBLY, REFER TO SHEET A-800

#) SHEET KEYNOTES

- 65 FIRST AID KIT
- 97 MECHANICAL EQUIPMENT - TYPICAL
- 99 ELECTRICAL EQUIPMENT - TYPICAL
- E5 1-TON BRIDGE CRANE ABOVE
- E6 ENCLOSURE FOR NETWORK COMPUTER AND BAR CODE GUN MODEL# WBB2000433 (CFCI)
- E7 KNAACK BOX MODEL 111 JOBMASTER CABINET 47.5 CU FT (CFCI)
- E8 SMALL DAY-MAG CABINET 36X24X36 (CFCI)
- E10 CONDITIONING BOX OF CFCI, TYP.
- E11 DH UNIT, TYP.

LEGEND

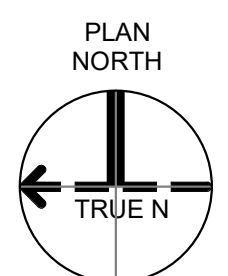
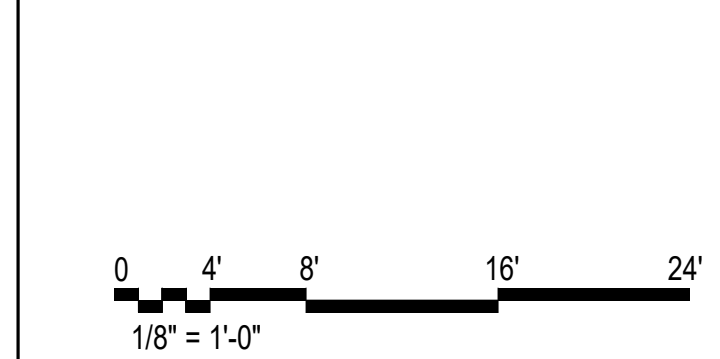
- PRIMARY PERSONNEL FLOW
- PRIMARY MATERIAL FLOW
- OWNER FURNISHED EQUIPMENT

* NOTE: FOR USER REFERENCE, NOT IN SCOPE OF CONSTRUCTION

- GYPSUM BOARD CEILING AS SCHEDULED
- CONTROL JOINT
- 2x2' ACOUSTICAL CEILING SYSTEM AS SCHEDULED CENTERED IN SPACE AS INDICATED
- LIGHT FIXTURE; REFER TO ELECTRICAL
- EXIT LIGHT FIXTURE; REFER TO ELECTRICAL
- SUPPLY AIR DIFFUSERS; REFER TO MECHANICAL
- RETURN AIR GRILLE; REFER TO MECHANICAL

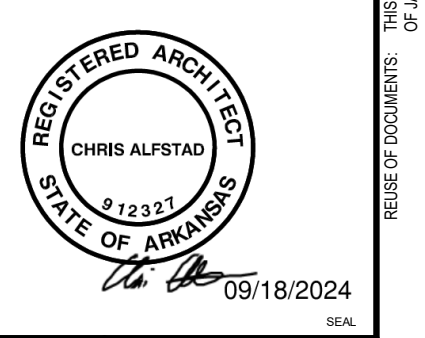
FF&E - CFCI	
MARK	DESCRIPTION
OHC	
T3	TRAINING TABLE

GRAPHIC SCALE(S)



NO.	DATE	REVISION	BY	APVD
1	10/02/2024	ADD/DUPLICATE - EXPANSION	IE	TM
0	09/18/2024	100% ISSUED FOR CONSTRUCTION - EXPANSION	IE	TM

Jacobs
 1999 Bryan Street, Suite 1500, Dallas, TX 75201
 Tel: 214.639.0145 Fax: 214.639.0447
 Entry: Jacobs Consultants Inc.
 License No. 00000000000000000000
 License # C238
 Exp. Date: 01/31/2025



Conditioning Boxes
 Camden OSD
 Calhoun County, Arkansas
 Aerojet Rocketdyne

Jacobs **MABRIZ**
 ARCHITECTURE
 EQUIPMENT PLAN

SHEET NO	AE104
SCALE	As indicated
DATE	09/18/24
PROJ	D3754502
DWG	CMDN_OSD_Conditioning Boxes_AE104

1

2

3

4

5