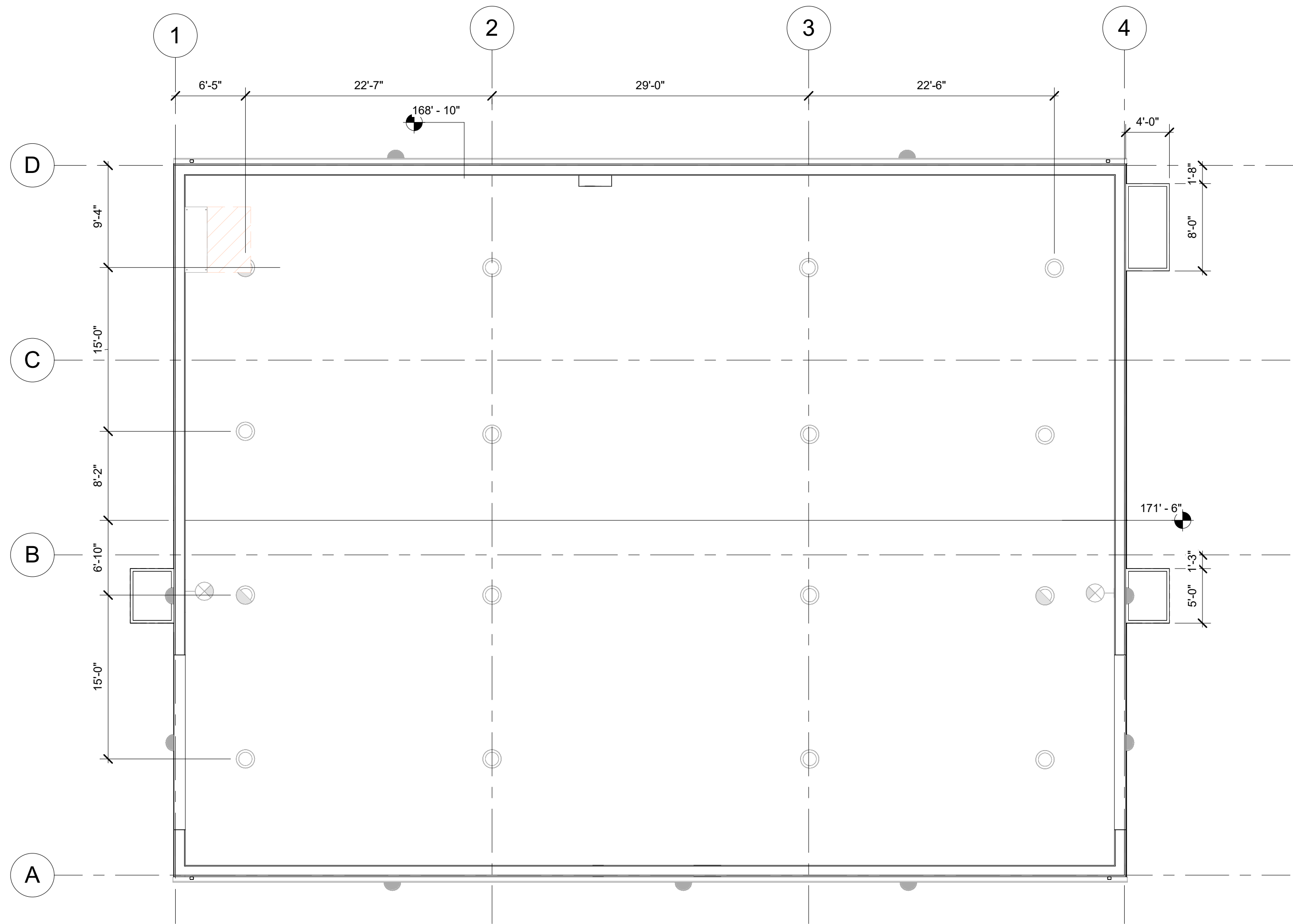


9/18/2024 9:28:00 AM AE 102  
Autodesk Docs/US\_D3754500\_FED\_Aerojet Rocketdyne/D3754500\_CIMDN\_OSD\_Conditioning-Boxes\_ARCH-INT.rvt



**A1 REFLECTED CEILING PLAN**  
SCALE 1/8" = 1'-0"

## GENERAL SHEET NOTES

- FINISHED FLOOR ELEVATION 0'-0" IS A REFERENCE ELEVATION FOR COORDINATION WITH BUILDING ELEMENTS. ACTUAL ELEVATION IS INDICATED ON CIVIL DRAWINGS
- FOR ARCHITECTURAL GENERAL NOTES, SYMBOLS, AND LEGEND, REFER TO DRAWING G-002.
- FOR BUILDING CODE DATA AND LIFE SAFETY PLAN, REFER TO DRAWING G-101.
- REFER TO EQUIPMENT PLAN SHEET FOR FURNITURE AND EQUIPMENT.
- REFER TO ELECTRICAL FOR LIGHTING PROTECTION.
- FOR ARCHITECTURAL ROOF AND WALL ASSEMBLY, REFER TO SHEET A-800

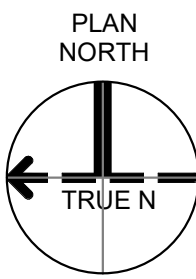
**Jacobs**  
1889 Bryan Street Suite 3500 Dallas, TX 75201  
Tel: 214-638-0145 Fax: 214-638-0447  
Entity: Jacobs Consultants Inc.  
License: Professional Architect  
Exp. Date: 01/31/2025



## LEGEND

- PRIMARY PERSONNEL FLOW
- PRIMARY MATERIAL FLOW
- OWNER FURNISHED EQUIPMENT
- \* NOTE: FOR USER REFERENCE, NOT IN SCOPE OF CONSTRUCTION
- GYPSUM BOARD CEILING AS SCHEDULED
- CONTROL JOINT
- 2'x2' ACOUSTICAL CEILING SYSTEM AS SCHEDULED CENTERED IN SPACE AS INDICATED
- LIGHT FIXTURE; REFER TO ELECTRICAL
- EXIT LIGHT FIXTURE; REFER TO ELECTRICAL
- SUPPLY AIR DIFFUSERS; REFER TO MECHANICAL
- RETURN AIR GRILLE; REFER TO MECHANICAL

## GRAPHIC SCALE(S)



SHEET NO	
AE102	
SCALE	As indicated
DATE	09/18/24
PROJ	D3754502
DWG	CIMDN-OSD_Conditioning-Boxes_AE102

PLOT DATE/TIME: 9/18/2024 9:28:00 AM