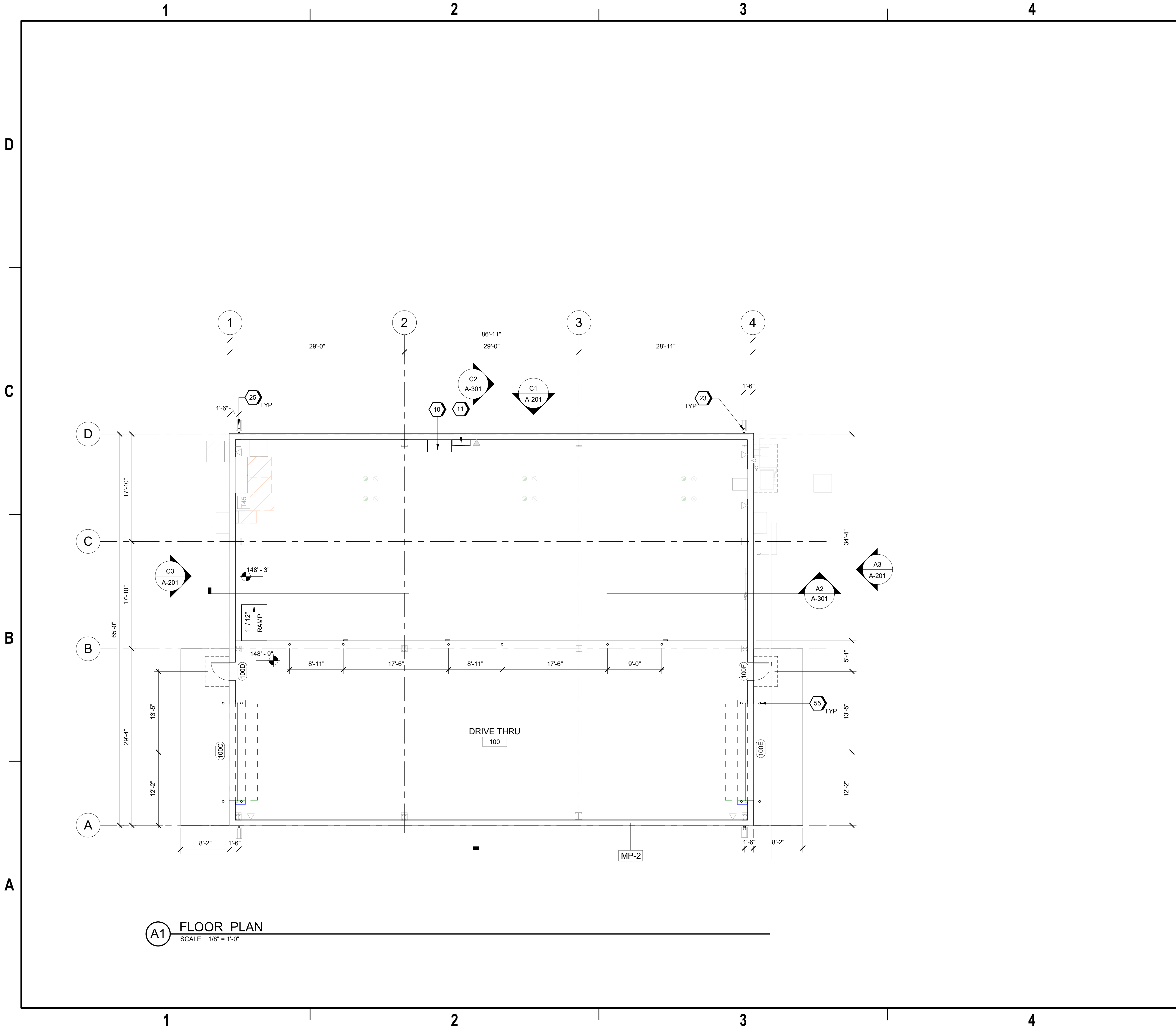


9/18/2024 9:27:59 AM AE101
Autodesk Docs/US_D3754502_FED_Aerojet Rocketdyne/D3754502_CIMDN_OSD_Conditioning-Boxes_ARCH-INT.rvt



GENERAL SHEET NOTES

- A. FINISHED FLOOR ELEVATION 0'-0" IS A REFERENCE ELEVATION FOR COORDINATION WITH BUILDING ELEMENTS. ACTUAL ELEVATION IS INDICATED ON CIVIL DRAWINGS.
- B. FOR ARCHITECTURAL GENERAL NOTES, SYMBOLS, AND LEGEND, REFER TO DRAWING G-002.
- C. FOR BUILDING CODE DATA AND LIFE SAFETY PLAN, REFER TO DRAWING G-101.
- D. REFER TO EQUIPMENT PLAN SHEET FOR FURNITURE AND EQUIPMENT.
- E. REFER TO ELECTRICAL FOR LIGHTING PROTECTION.
- F. FOR ARCHITECTURAL ROOF AND WALL ASSEMBLY, REFER TO SHEET A-800.

#SHEET KEYNOTES

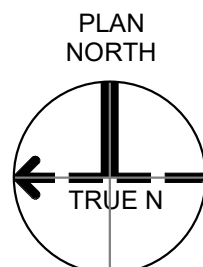
- 10 2X2 TABLE
- 11 CONTROL PANEL
- 23 DOWNSPOUT WITH CUTTER ABOVE
- 25 PRECAST CONCRETE RAINWATER SPLASH BLOCK AT EACH DOWNSPOUT DISCHARGE; PLACE ON FINISH GRADE; SLOPE DOWN AWAY FROM BUILDING-TYPICAL
- 55 3'-0" X 4" DIA CONCRETE FILLED GALV STL PIPE BOLLARD, PAINTED SAFETY YELLOW

LEGEND

- PRIMARY PERSONNEL FLOW
- PRIMARY MATERIAL FLOW
- OWNER FURNISHED EQUIPMENT

* NOTE: FOR USER REFERENCE, NOT IN SCOPE OF CONSTRUCTION

GRAPHIC SCALE(S)



NO.	DATE	DESIGN	DR	IE	NDYA	CHK	REVISION	BY	APVD	TM
0	09/18/2024						100% ISSUED FOR CONSTRUCTION - EXPANSION	IE	TM	

Jacobs
1889 Bryan Street Suite 3500 Dallas, TX 75201
Tel: 214-638-0145 Fax: 214-638-0447
Entity: Jacobs Consultants Inc.
License: Professional Engineer
Exp. Date: 01/31/2025

REGISTERED ARCHITECT
CHRIS ALFSTAD
8123227
STATE OF ARKANSAS
09/18/2024

Jacobs **ARCHITECTURE**
FLOOR PLAN

Conditioning Boxes
Camden OSD
Calhoun County, Arkansas
Aerojet Rocketdyne

SHEET NO
AE101

SCALE As indicated
DATE 09/18/24
PROJ D3754502
DWG CIMDN-OSD_Conditioning-Boxes_AE101

PLOT DATE/TIME: 9/18/2024 9:27:59 AM