

9/18/2024 5:54:46 PM  
Autodesk Docs/US\_D3754502\_FED\_Aerojet Rocketdyne/D3754502\_CMDN\_OSD\_Compressor-Building\_STR.rvt

SB101

A

B

C

D

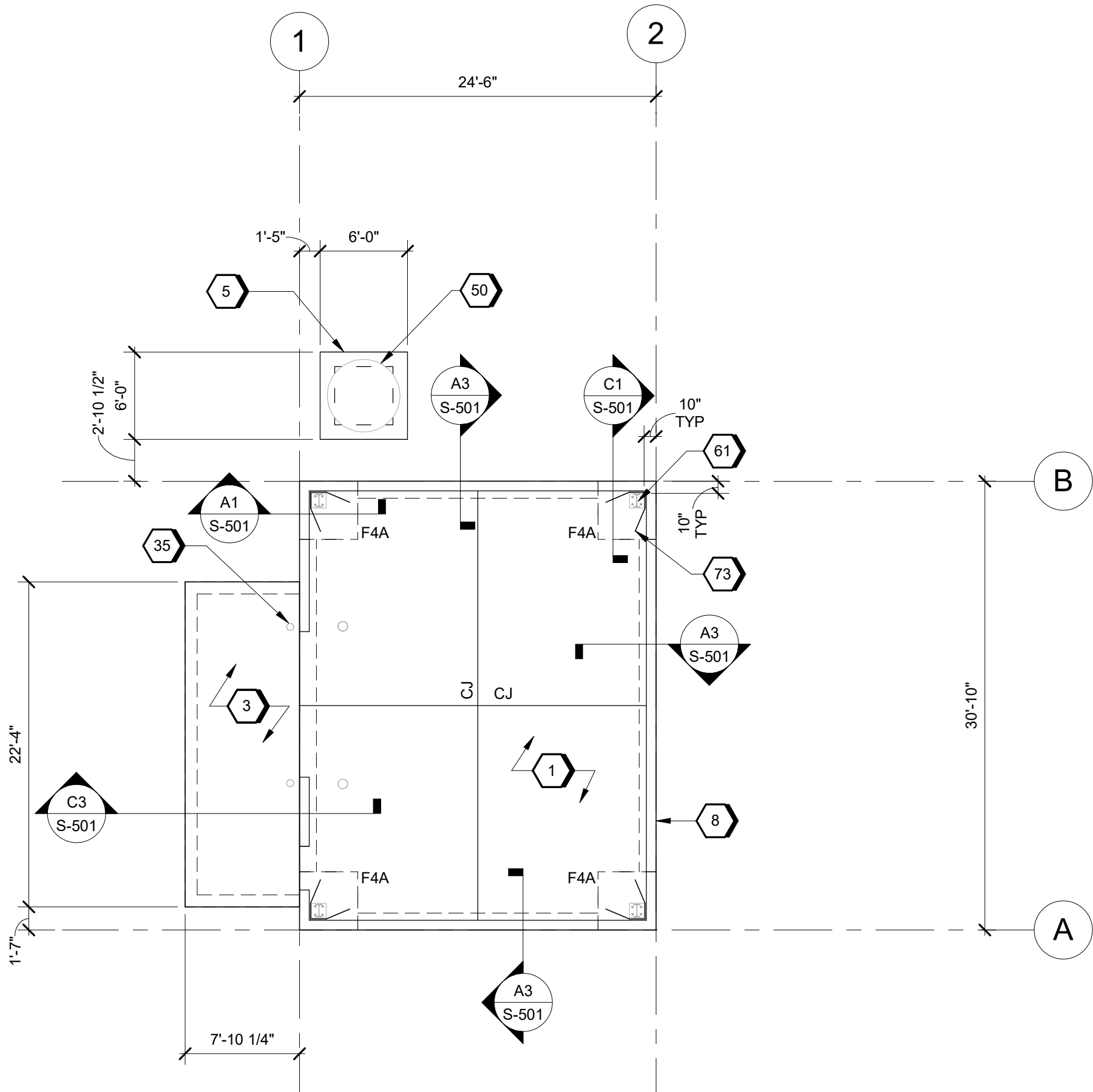
1

2

3

4

5



**A2** FOUNDATION PLAN  
SCALE 1/8" = 1'-0"

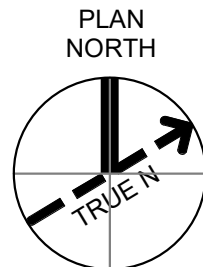
## GENERAL SHEET NOTES

- A. DESIGN DOCUMENTED HEREIN IS BASED ON METAL BUILDING SUPERSTRUCTURE PRELIMINARY LOADING. FINAL FOUNDATION SIZES TO BE DETERMINED.
- B. DATUM ELEVATION 0'-0" ON DRAWINGS CORRESPONDS TO ACTUAL SEA LEVEL ELEVATION OF +163.50', RE: CIVIL.
- C. REFER TO CMDN-OSD\_STANDARD-DETAILS\_S-80X SERIES SHEETS FOR ABBREVIATIONS, SYMBOLS, LEGENDS, AND GENERAL NOTES.
- D. REFER TO CMDN-OSD\_STANDARD-DETAILS\_S-81X SERIES SHEETS FOR TYPICAL DETAILS.
- E. REFER TO ARCHITECTURAL, MECHANICAL, ELECTRICAL, & PLUMBING SHEETS FOR SIZE AND LOCATION OF CONCRETE HOUSEKEEPING PADS, FLOOR PENETRATIONS, SLEEVES, DRAINS, RECESSES, AND CURBS.
- F. REFER TO ELECTRICAL FOR GROUNDING REQUIREMENTS AND DETAILS.
- G. REFER TO ARCHITECTURAL DRAWINGS FOR PRE-ENGINEERED METAL BUILDING HEIGHT AND GEOMETRY.
- H. COORDINATE DOOR OPENING LOCATIONS WITH ARCHITECTURAL DRAWINGS.
- I. TOP OF FOOTING ELEVATION = TOP OF SLAB-ON-GRADE, UNLESS OTHERWISE NOTED.
- J. CJ DENOTES SLAB ON GRADE CONTROL JOINT, RE: S-811.
- K. F# DENOTES SPREAD FOOTING, RE: S-816 FOR FOOTING SCHEDULE.
- L. SLOPE ALL EXTERIOR CONCRETE FOR DRAINAGE.

## #>SHEET KEYNOTES

- 1 8" THICK SLAB-ON-GRADE REINF WITH #4 @ 12" OC EW, OVER 15 MIL VAPOR RETARDER OVER 4" CAPILLARY BARRIER, TOP OF SLAB ELEV = 0'-0".
- 3 8" THICK SLAB-ON-GRADE REINF WITH #4 @ 12" OC EW OVER 4" CAPILLARY BARRIER, TYP. T/SLAB EL = 0'-0".
- 5 'TYPE-A' EQUIPMENT PAD, RE: D1/S-813.
- 8 CONCRETE CURB AT PEMB PERIMETER, TYP.
- 35 BOLLARD, RE: S-815, RE: ARCH FOR ADD'L INFO.
- 50 TANK RECEIVER, RE: MECHANICAL.
- 61 PEMB COLUMN TYP, BY PEMB MANUFACTURER.
- 73 #4 HAIRPIN LOCATED 3" BELOW TOP OF SLAB

## GRAPHIC SCALE(S)



SHEET NO	
SB101	
SCALE	1/8" = 1'-0"
DATE	09/18/2024
PROJ	D3754502
DWG	CMDN-OSD_Compressor-Building_SB101

PLOT DATE/TIME: 9/18/2024 5:54:46 PM

**Jacobs** **M&BIOZ**



STRUCTURAL  
FOUNDATION PLAN

Compressor-Building  
Camden OSD  
Calhoun County, Arkansas  
Aerojet Rocketdyne



**Jacobs**  
1889 Bryan Street Suite 3500 Dallas, TX 75201  
Tel: 214-638-0145 Fax: 214-638-0447  
Entity: Jacobs Engineering Group Inc.  
License: Professional Engineering  
Exp. Date: 12/31/2024

REUSE OF DOCUMENT: THIS DRAWING AND THE DESIGN INFORMATION CONTAINED HEREIN IS THE PROPERTY OF JACOBS AND IS NOT TO BE USED, IN WHOLE OR IN PART, FOR ANY OTHER PROJECT WITHOUT THE WRITTEN AUTHORIZATION OF JACOBS. © Jacobs Solutions 2022. ALL RIGHTS RESERVED.