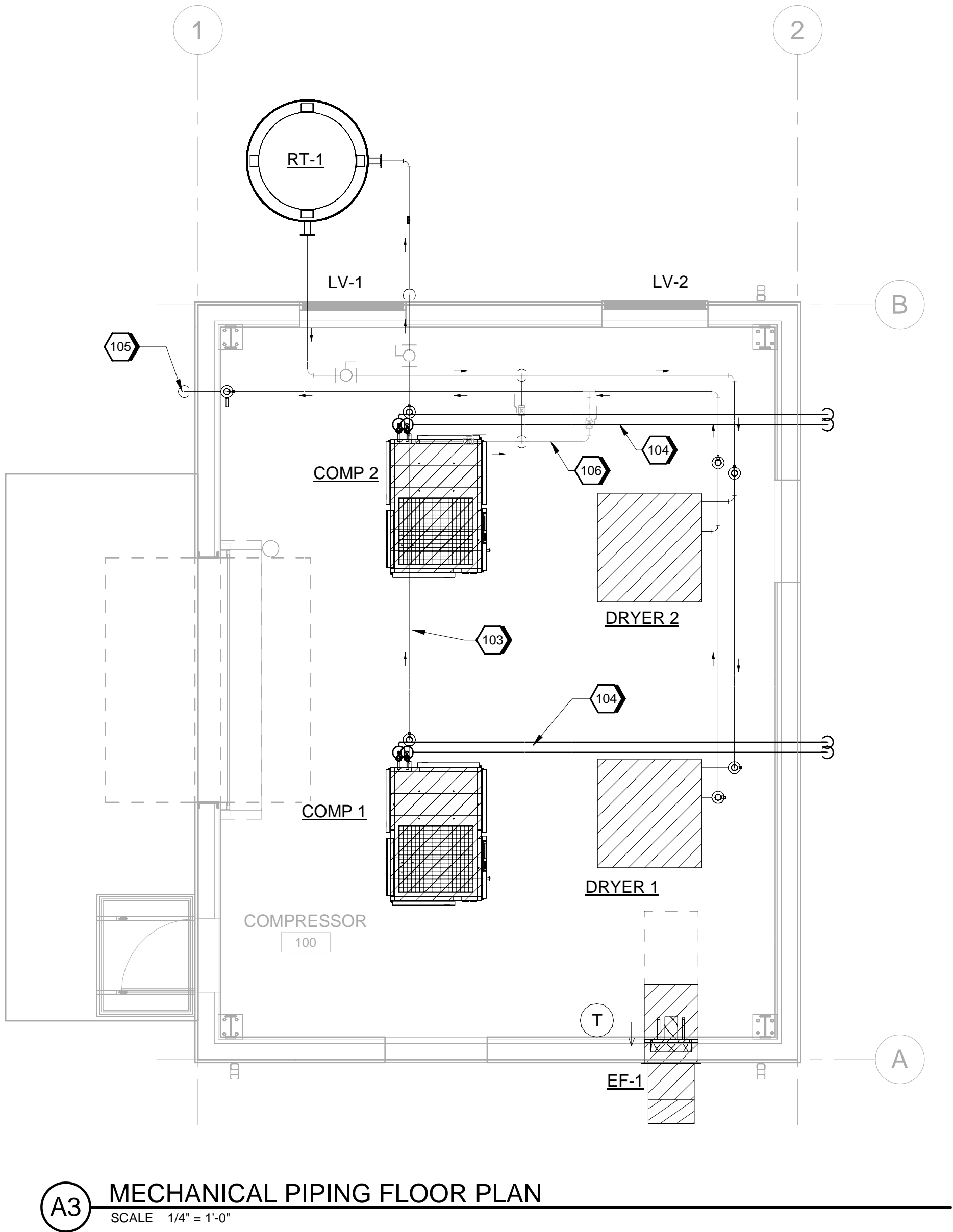
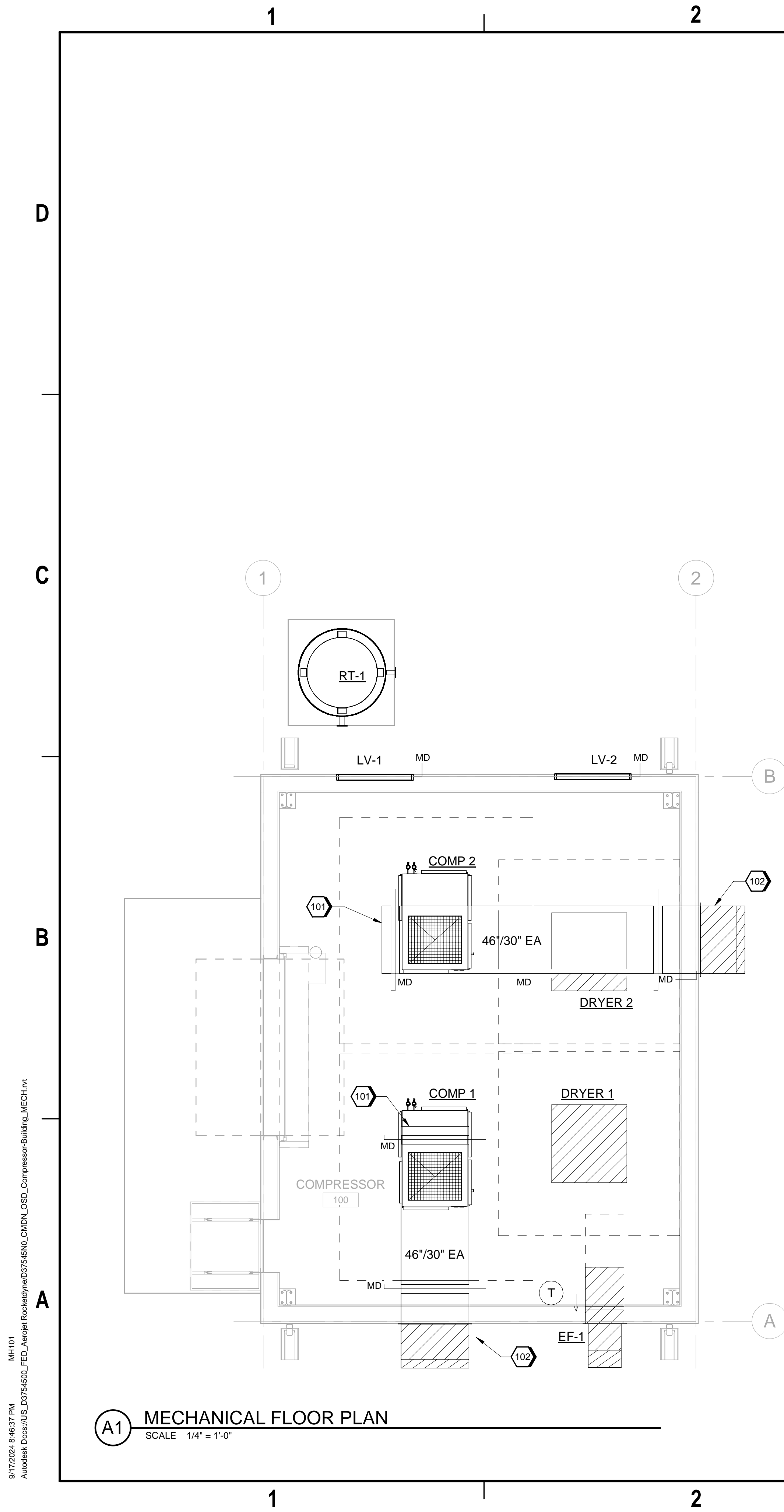


9/17/2024 8:46:37 PM  
Autodesk Docs/US\_D3754500\_FED\_Aerojet Rocketdyne/D3754500\_CIMDN\_OSD\_Compressor-Building\_MECH.rvt



## GENERAL SHEET NOTES

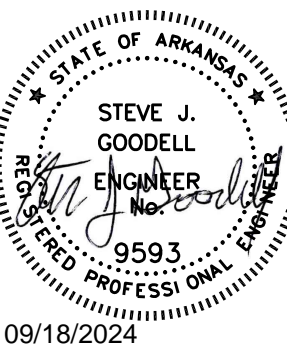
A. ROUTE CONDENSATE DRAIN TO THE DRY WELL. REFER TO SHEET GP-501 DETAILS.

## #SHEET KEYNOTES

- 101 PROVIDE 1/2"x1/2" WIRE MESH SCREEN OVER END OF DUCT WITH FRAME.  
102 56x42 WEATHER HOOD  
103 2"Ø COMPRESSED AIR PIPE, TYPICAL.  
104 1/2"Ø CONDENSATE DRAIN PIPE THROUGH THE WALL AND DISCHARGE TO THE DRY WELL. REFER TO THE PLUMBING DRAWINGS FOR DRY WELL LOCATION.  
105 FULL SIZE CONNECTION DRYER BLOW DOWN PIPE THROUGH WALL AND DISCHARGE TO GRADE  
106 2"Ø COMPRESSED AIR BYPASS PIPING.

**Jacobs**

1888 Bryan Street Suite 3000 Dallas, TX 75201  
Tel: 214-638-0145 Fax: 214-638-0447  
Entity: Jacobs Engineering Group Inc.  
License: Professional Engineering  
Exp. Date: 12/31/2024

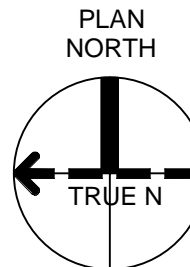


Compressor-Building  
Camden OSD  
Calhoun County, Arkansas  
Aerojet Rocketdyne

**Jacobs** **M&H**

MECHANICAL  
FLOOR PLAN

## GRAPHIC SCALE(S)



SHEET NO	
MH101	
SCALE	1/4" = 1'-0"
DATE	09/18/2024
PROJ	D3754502
DWG	CIMDN-OSD, Compressor-Building, MH101

PLOT DATE/TIME: 9/17/2024 8:46:37 PM