

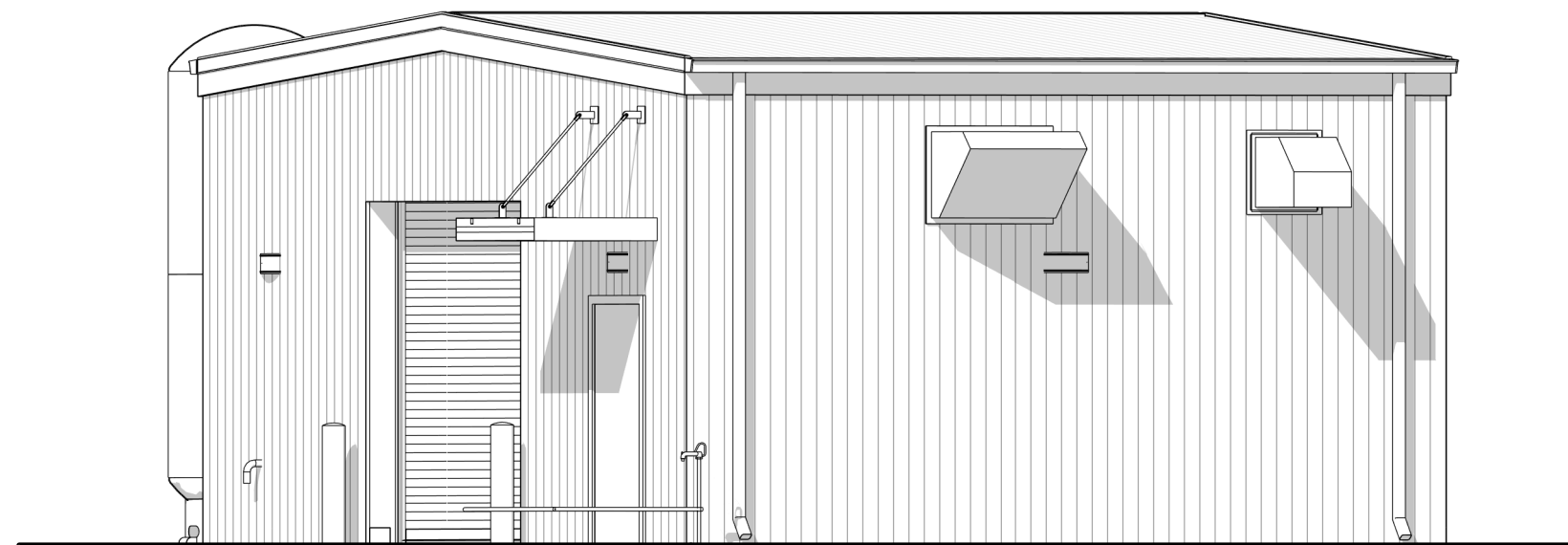


Compressor-Building

Aerojet Rocketdyne

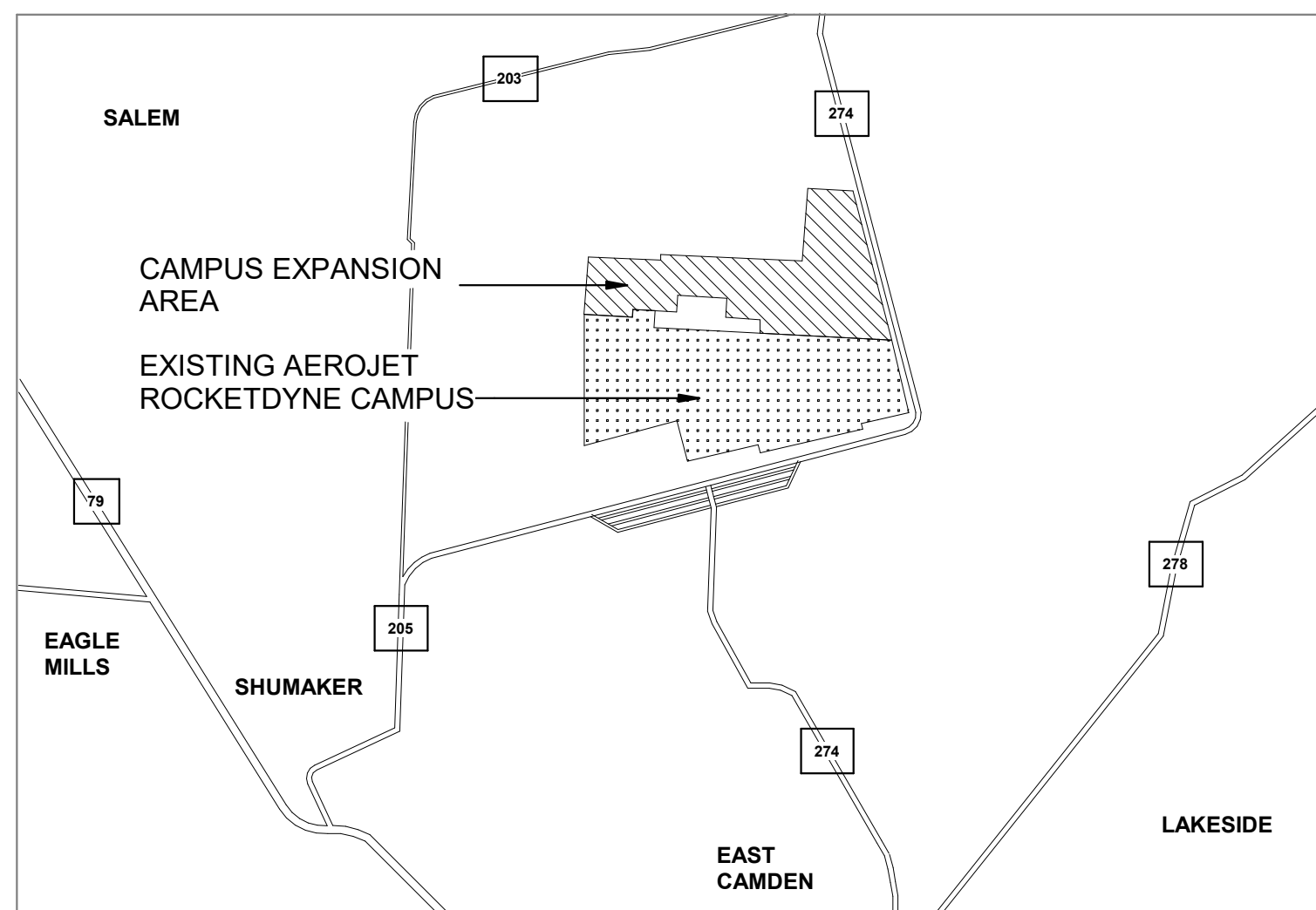
Camden OSD

Calhoun County, Arkansas

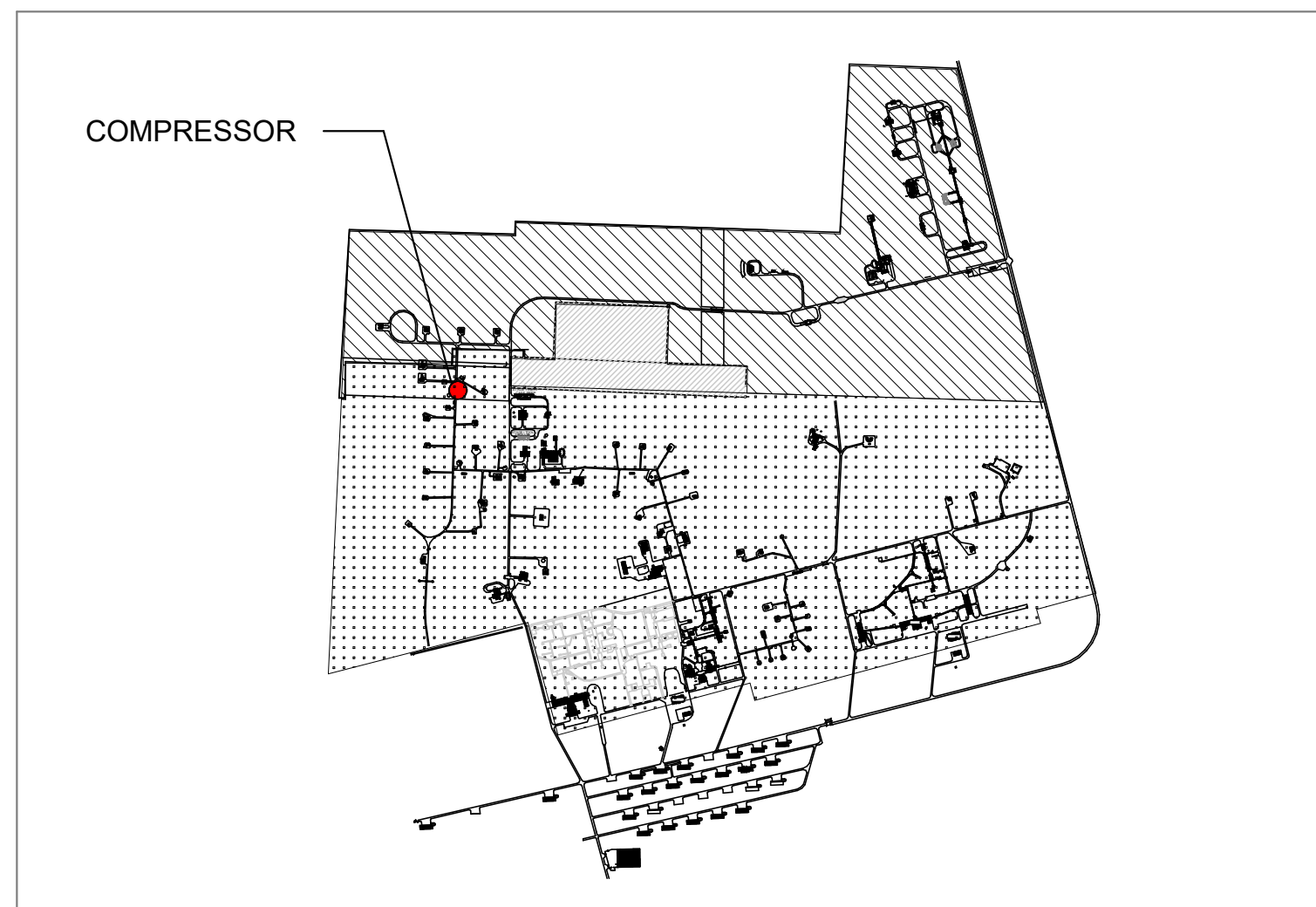


DPA III SITE EXPANSION - 100% ISSUED FOR CONSTRUCTION

SEPTEMBER 18, 2024



LOCATION MAP



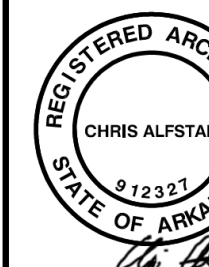
VICINITY MAP

GENERAL SHEET NOTES

- PRE-ENGINEERED METAL BUILDING (PEMB) SYSTEMS ARE THE DESIGN INTENT FOR BUILDING STRUCTURE, ENVELOPE, PENETRATIONS, AND ALL ASSOCIATED COMPONENTS FOR FACILITIES INDICATED IN ACCORDANCE WITH THE DIVISION 13 METAL BUILDING OF THE SPECIFICATIONS.
- THE PEMB MANUFACTURER WILL INCORPORATE ALL BUILDING CODE, INDUSTRY STANDARDS, AND OWNER DIRECTED REQUIREMENTS INTO THE DESIGN AND CONSTRUCTION OF THE INDICATED FACILITIES.
- ALL BUILDING MATERIALS ARE NEW AND PROVIDED BY THE PEMB MANUFACTURER.
- VERIFY ALL FIELD CONDITIONS AND DIMENSIONS PRIOR TO PROCEEDING WITH THE WORK. ALL DISCREPANCIES MUST BE BROUGHT TO THE IMMEDIATE ATTENTION OF THE ARCHITECT IN WRITING. OVERALL DIMENSIONS INDICATED ARE TO EXTERIOR FACE OF STRUCTURAL GIRT FRAMING, UNLESS OTHERWISE NOTED.
- STUDY AND COMPARE THE CONTRACT DOCUMENTS WITH EACH OTHER AND AT ONCE, REPORT TO THE ARCHITECT ANY ERRORS, INCONSISTENCIES OR OMISSIONS DISCOVERED.
- DO NOT SCALE THE DRAWINGS FOR CONSTRUCTION PURPOSES.
- VERIFY SIZE, LOCATION, AND CHARACTERISTICS OF ALL EQUIPMENT WITH THE OWNER, MANUFACTURERS, AND SUPPLIERS BEFORE BEGINNING CONSTRUCTION.
- REFER TO A800-SERIES SHEETS FOR TYPICAL CAMPUS EXTERIOR ASSEMBLIES UTILIZED AT EACH BUILDING IN THIS PROJECT SCOPE.
- REFER TO A800-SERIES DRAWINGS FOR TYPICAL CAMPUS DETAILS UTILIZED AT EACH BUILDING IN THIS PROJECT SCOPE.
- FINISH FLOOR ELEVATION OF 0' IS A RELATIVE ELEVATION USED FOR DESIGN COORDINATION, REFER TO CIVIL ENGINEERING DRAWINGS FOR ACTUAL TOPOGRAPHIC ELEVATIONS OF EACH BUILDING, TOPOGRAPHIC ELEVATIONS VARY BETWEEN BUILDINGS.
- REFER TO CIVIL FOR SITE ORIENTATION ON ALL BUILDINGS.

SHEET INDEX

| NO | SHEET NAME |
|------------------------|-------------------------------------------------------------------------|
| 10 GENERAL | |
| G-001 | GENERAL - COVER SHEET, GENERAL NOTES AND SHEET INDEX |
| G-101 | GENERAL - LIFE SAFETY PLAN AND CODE REQUIREMENTS |
| 70 STRUCTURAL | |
| SB101 | STRUCTURAL - FOUNDATION PLAN |
| S-501 | STRUCTURAL - FOUNDATION SECTIONS |
| 80 ARCHITECTURE | |
| AE101 | ARCHITECTURE - FLOOR, EQUIPMENT, ROOF PLANS, AND REFLECTED CEILING PLAN |
| A-201 | ARCHITECTURE - EXTERIOR ELEVATION |
| A-301 | ARCHITECTURE - BUILDING SECTIONS |
| A-302 | ARCHITECTURE - WALL SECTIONS |
| A-601 | ARCHITECTURE - DOOR SCHEDULES |
| A-900 | ARCHITECTURE - AXONOMETRIC VIEWS |
| 90 INTERIORS | |
| I-001 | INTERIOR - GENERAL NOTES AND LEGENDS |
| IN-101 | INTERIOR - FIRST LEVEL FINISH AND SIGNAGE PLAN |
| I-601 | INTERIOR - FINISH MATERIAL LEGEND AND SCHEDULE |
| 130 PLUMBING | |
| P-001 | PLUMBING - GENERAL NOTES AND SYMBOLS |
| P-100 | PLUMBING - GROUND FLOOR PLAN |
| 150 MECHANICAL | |
| M-001 | MECHANICAL - GENERAL NOTES AND ABBREVIATIONS |
| M-002 | MECHANICAL - SYMBOLS |
| MH101 | MECHANICAL - FLOOR PLAN |
| M-601 | MECHANICAL - ISOMETRIC AND FLOW DIAGRAM |
| M-701 | MECHANICAL - SCHEDULES |
| 160 ELECTRICAL | |
| EP101 | ELECTRICAL - POWER, GROUNDING AND LIGHTING PLAN |
| E-702 | ELECTRICAL - ONE-LINE DIAGRAM AND PANEL SCHEDULES |
| 170 TELECOMMUNICATIONS | |
| T-001 | TELECOMMUNICATION - GENERAL NOTES, ABBREVIATIONS AND SYMBOLS |
| T-101 | TELECOMMUNICATION - SITE PLAN |
| T-102 | TELECOMMUNICATION - GROUND FLOOR PLAN |
| T-601 | TELECOMMUNICATION - ONE LINE DIAGRAM |
| 180 SECURITY | |
| TY-001 | SECURITY - SYSTEM SYMBOLS, ABBREVIATIONS AND GENERAL NOTES |
| TY-101 | SECURITY - SYSTEM DEVICE LAYOUT FLOOR PLAN |
| TY-501 | SECURITY - SYSTEM INSTALLATION DETAILS |
| TY-601 | SECURITY - SYSTEM ONE-LINE DIAGRAM |



Compressor-Building
Camden OSD
Calhoun County, Arkansas
Aerojet Rocketdyne



GENERAL
COVER SHEET, GENERAL NOTES
AND SHEET INDEX

| | |
|----------|-------------------------------------|
| SHEET NO | G-001 |
| SCALE | As indicated |
| DATE | 09/18/2024 |
| PROJ | D3754502 |
| DWG | CAMDN-OSD_Compressor-Building_G-001 |