

9/18/2024 9:24:53 AM
AutoDesk Docs/US/D3754500_FED_Aerojet Rocketdyne/D3754500_CIMDN_OSD_Compressor-Building_ARCH-INT.rvt
AE101

1

2

3

4

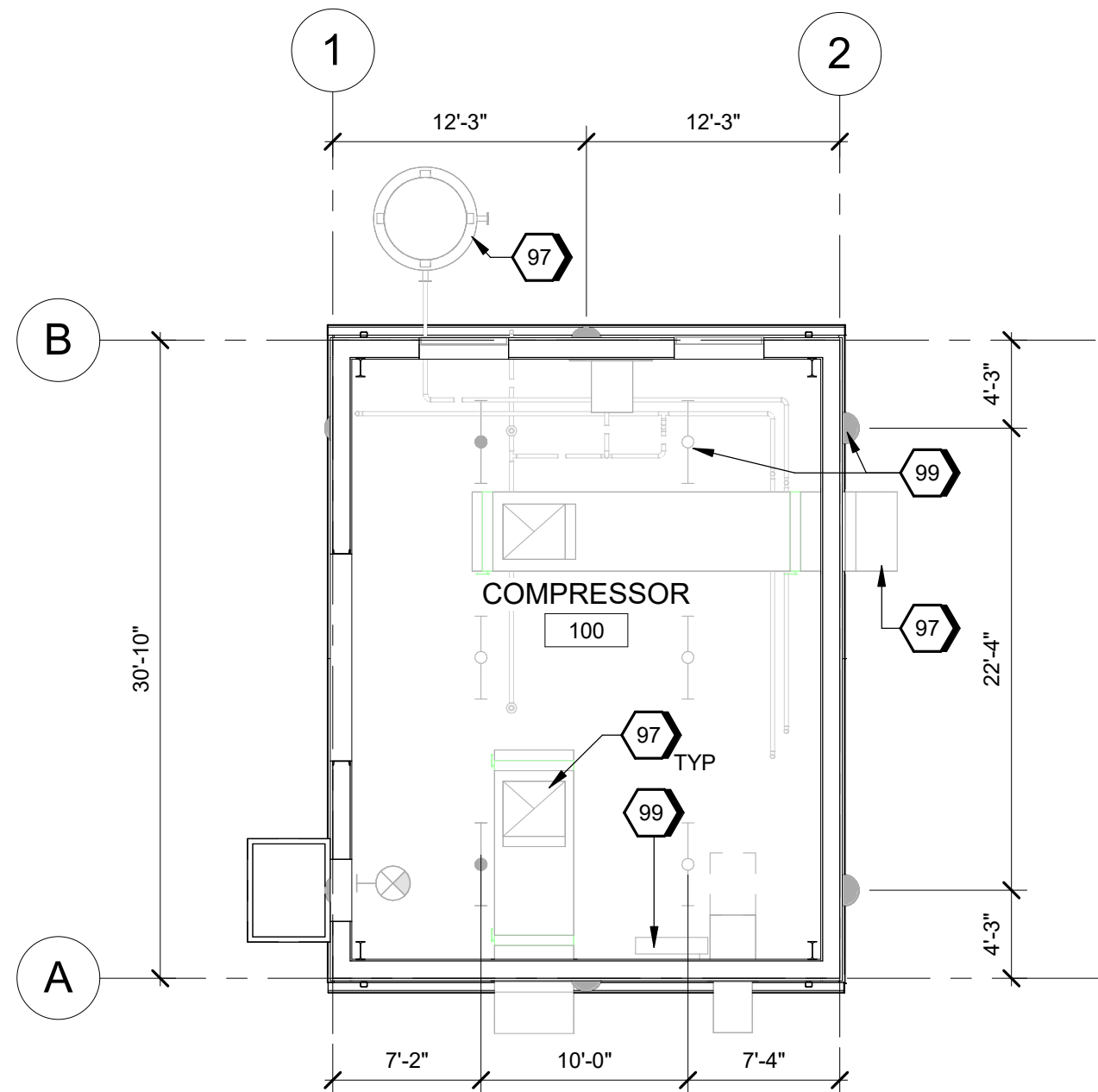
5

D

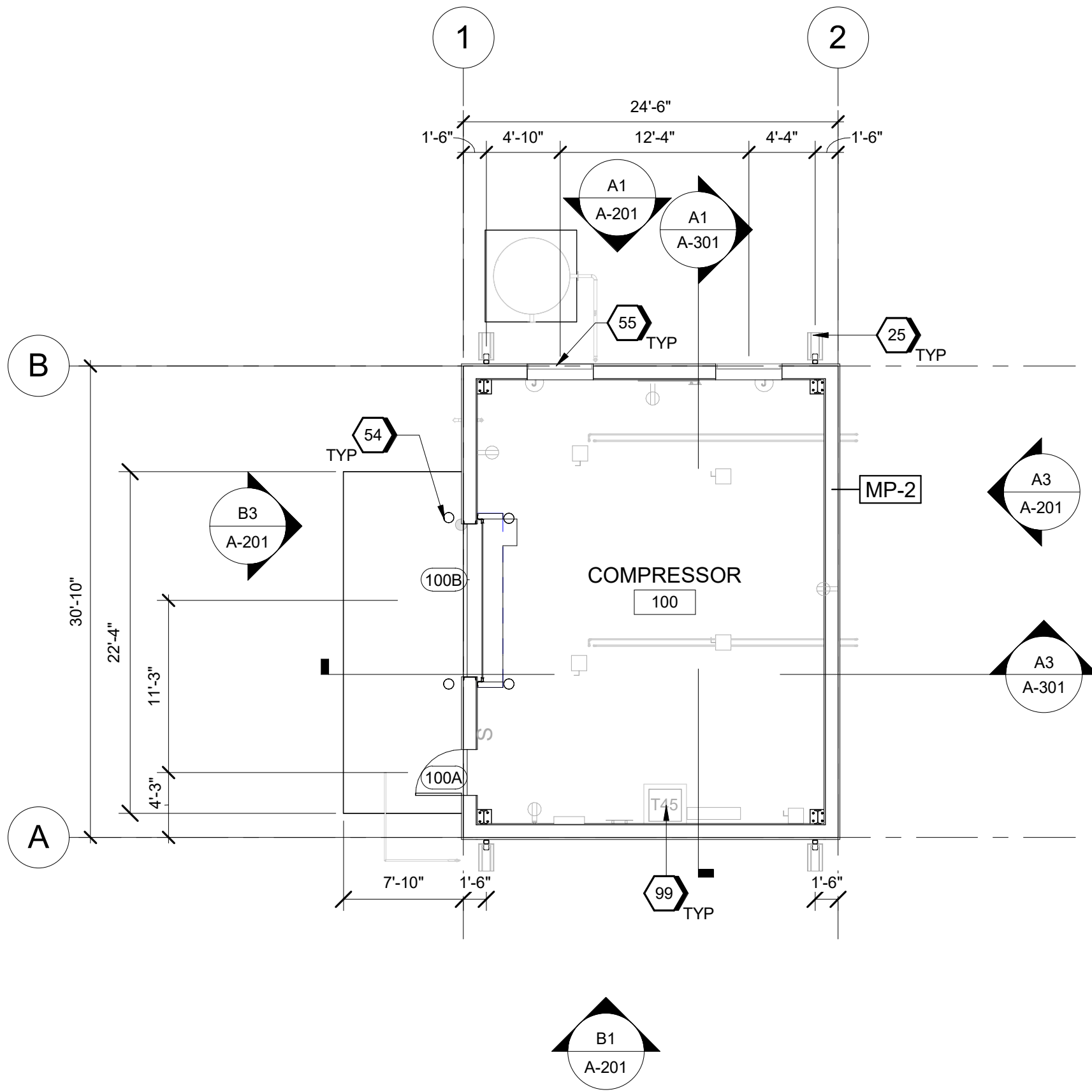
C

B

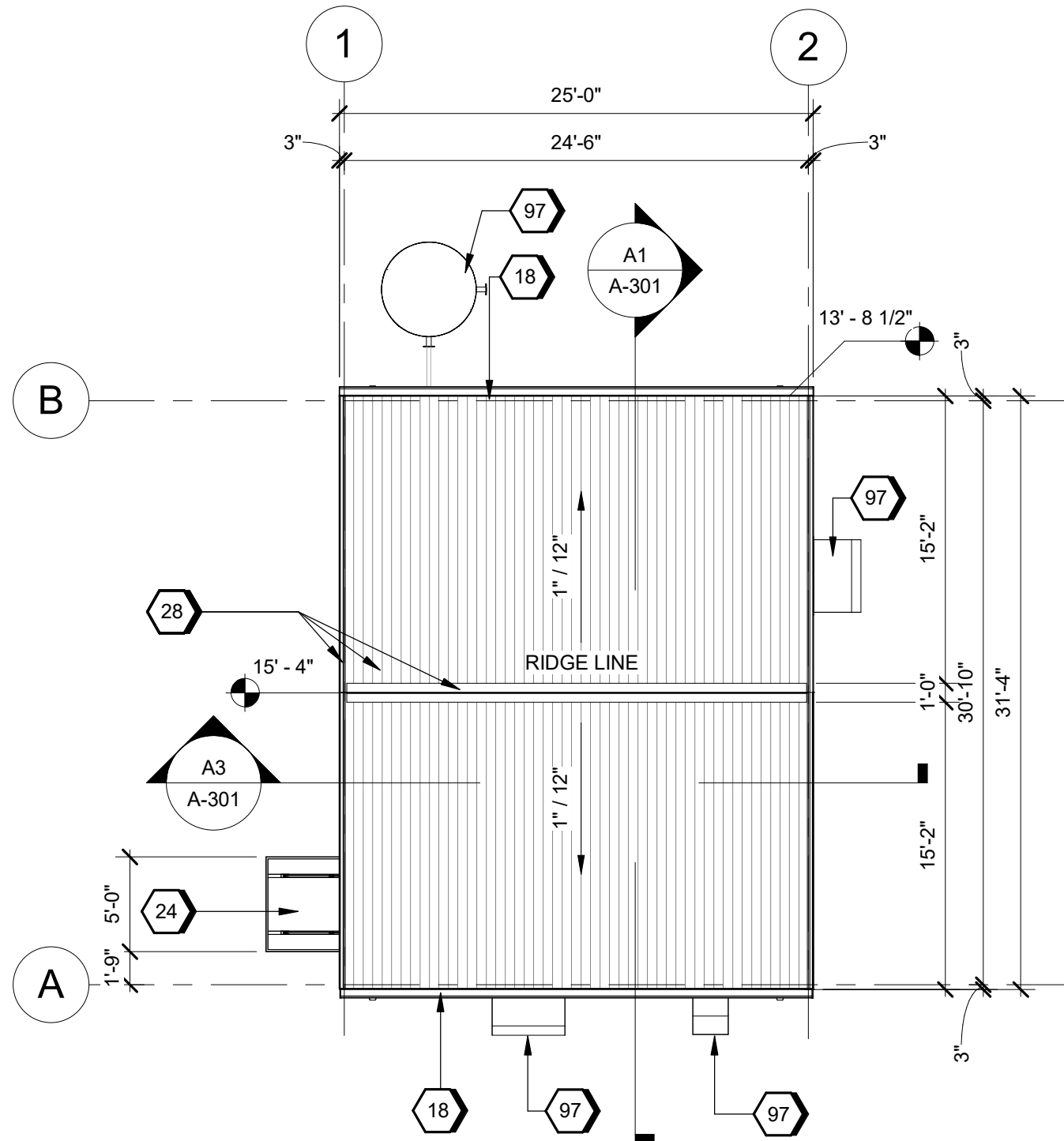
A



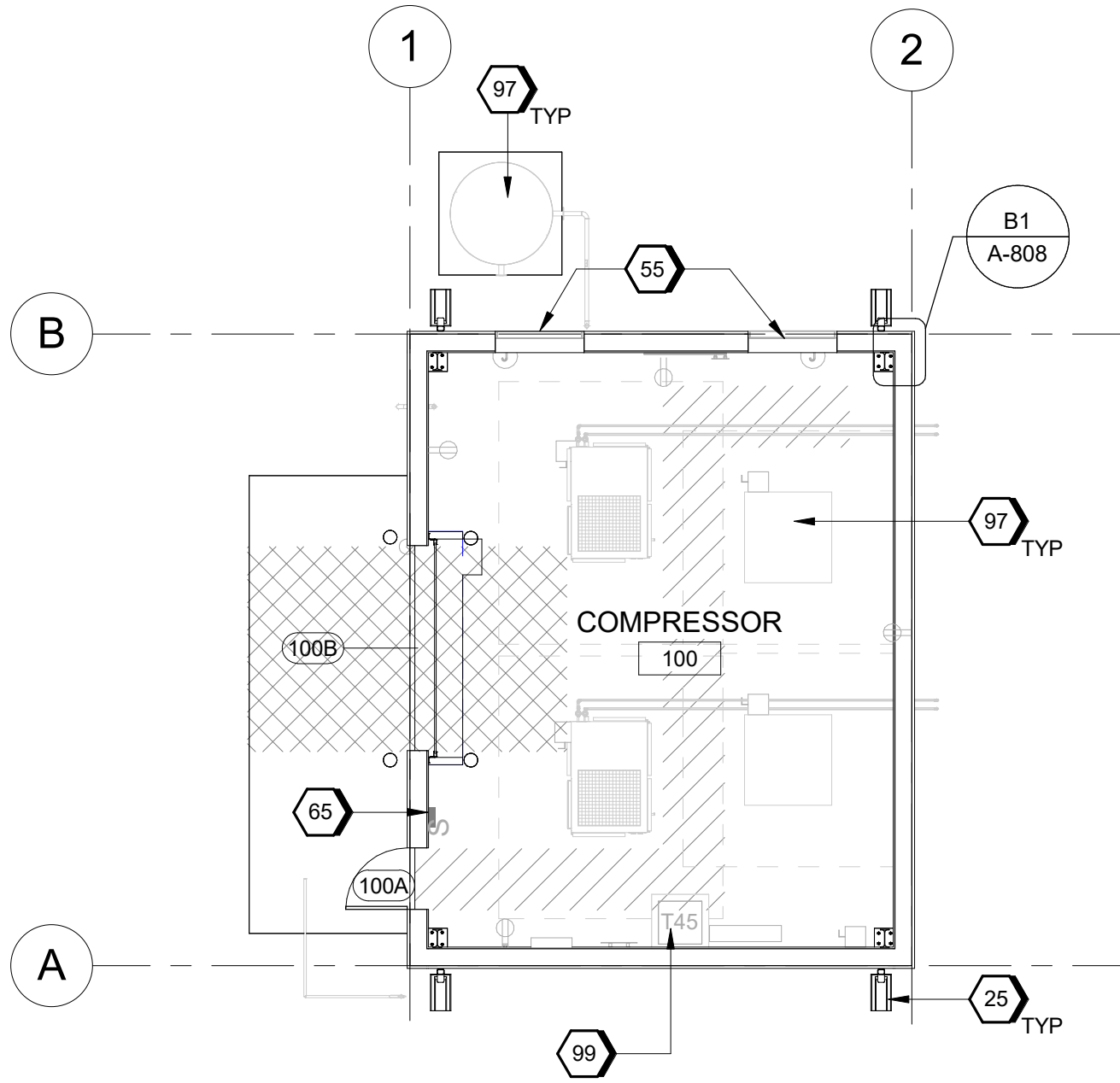
C1 REFLECTED CEILING PLAN
SCALE 1/8" = 1'-0"



A1 FLOOR PLAN
SCALE 1/8" = 1'-0"



C3 ROOF PLAN
SCALE 1/8" = 1'-0"



A3 EQUIPMENT PLAN
SCALE 1/8" = 1'-0"

GENERAL SHEET NOTES

- THE PRE-ENGINEERED METAL BUILDING (PEMB) SYSTEM INCLUDES ALL ROOFING & WALL PANEL ENVELOPE, ROOF DRAINAGE COMPONENTS, ROOF AND WALL THERMAL INSULATION, STEEL SUPERSTRUCTURE AND ALL SECONDARY FRAMING AND BRACING PROVIDED BY THE MANUFACTURER.
- FINISHED FLOOR ELEVATION 0'-0" IS A REFERENCE ELEVATION FOR COORDINATION WITH BUILDING ELEMENTS. ACTUAL ELEVATION IS INDICATED ON CIVIL DRAWINGS
- FOR ARCHITECTURAL GENERAL NOTES, SYMBOLS, AND LEGEND, REFER TO DRAWING G-002.
- FOR BUILDING CODE DATA AND LIFE SAFETY PLAN, REFER TO DRAWING G-101.
- FURNITURE AND EQUIPMENT IS SHOWN FOR DISCIPLINE COORDINATION ONLY. REFER TO ELECTRICAL FOR LIGHTING PROTECTION.
- FOR ARCHITECTURAL ROOF AND WALL ASSEMBLY, REFER TO SHEET A-800

SHEET KEYNOTES

- CONT. METAL GUTTER 5" DEEP X 6" WIDE. COLOR TO MATCH THE BUILDING
- PEMB: ENTRY DOOR CANOPY - TYPICAL
- PRECAST CONCRETE RAINWATER SPLASH BLOCK AT EACH DOWNSPOUT DISCHARGE; PLACE ON FINISH GRADE; SLOPE DOWN AWAY FROM BUILDING-TYPICAL
- PEMB: SHEET METAL ROOFING, RIDGE CAP, RAKE & EAVE TRIM AND FLASHING - TYPICAL
- TYP. CONCRETE FILLED GALV STL PIPE BOLLARD, PAINTED SAFETY YELLOW
- METAL LOUVER - TYPICAL
- FIRST AID KIT (CFCI)
- MECHANICAL EQUIPMENT - TYPICAL
- ELECTRICAL EQUIPMENT - TYPICAL

LEGEND

- PRIMARY PERSONNEL FLOW
- PRIMARY MATERIAL FLOW
- OWNER FURNISHED EQUIPMENT
- OWNER FURNISHED OFFICE EQUIPMENT

*NOTE: FOR USER REFERENCE, NOT IN SCOPE OF CONSTRUCTION

- GYPSUM BOARD CEILING AS SCHEDULED
- CONTROL JOINT

- 2'x2' ACOUSTICAL CEILING SYSTEM AS SCHEDULED CENTERED IN SPACE AS INDICATED

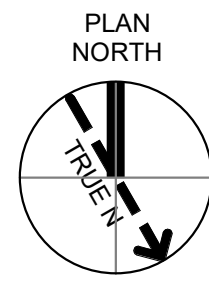
- LIGHT FIXTURE; REFER TO ELECTRICAL

- EXIT LIGHT FIXTURE; REFER TO ELECTRICAL

- SUPPLY AIR DIFFUSERS; REFER TO MECHANICAL

- RETURN AIR GRILLE; REFER TO MECHANICAL

GRAPHIC SCALE(S)



Jacobs
1888 Bryan Street Suite 3500 Dallas, TX 75201
Tel: 214-638-0145 Fax: 214-638-0447
Entity: Jacobs Consultants Inc.
License: Professional Engineer
Exp. Date: 01/31/2025



Compressor-Building
Camden OSD
Calhoun County, Arkansas
Aerojet Rocketdyne

Jacobs **MABIOZ**
ARCHITECTURE
FLOOR, EQUIPMENT, ROOF AND
REFLECTED CEILING PLANS

SHEET NO
AE101
SCALE As indicated
DATE 09/18/2024
PROJ D3754502
DWG CIMDN-OSD_Compressor-Building_AE101

PLOT DATE/TIME: 9/18/2024 9:24:53 AM