

9/18/2024 9:24:54 AM A-301
Autodesk Docs/US_FED_Aerojet Rocketdyne/D3754500_CMDN_OSD_Compressor-Building_ARCH-INT.rvt

1

2

3

4

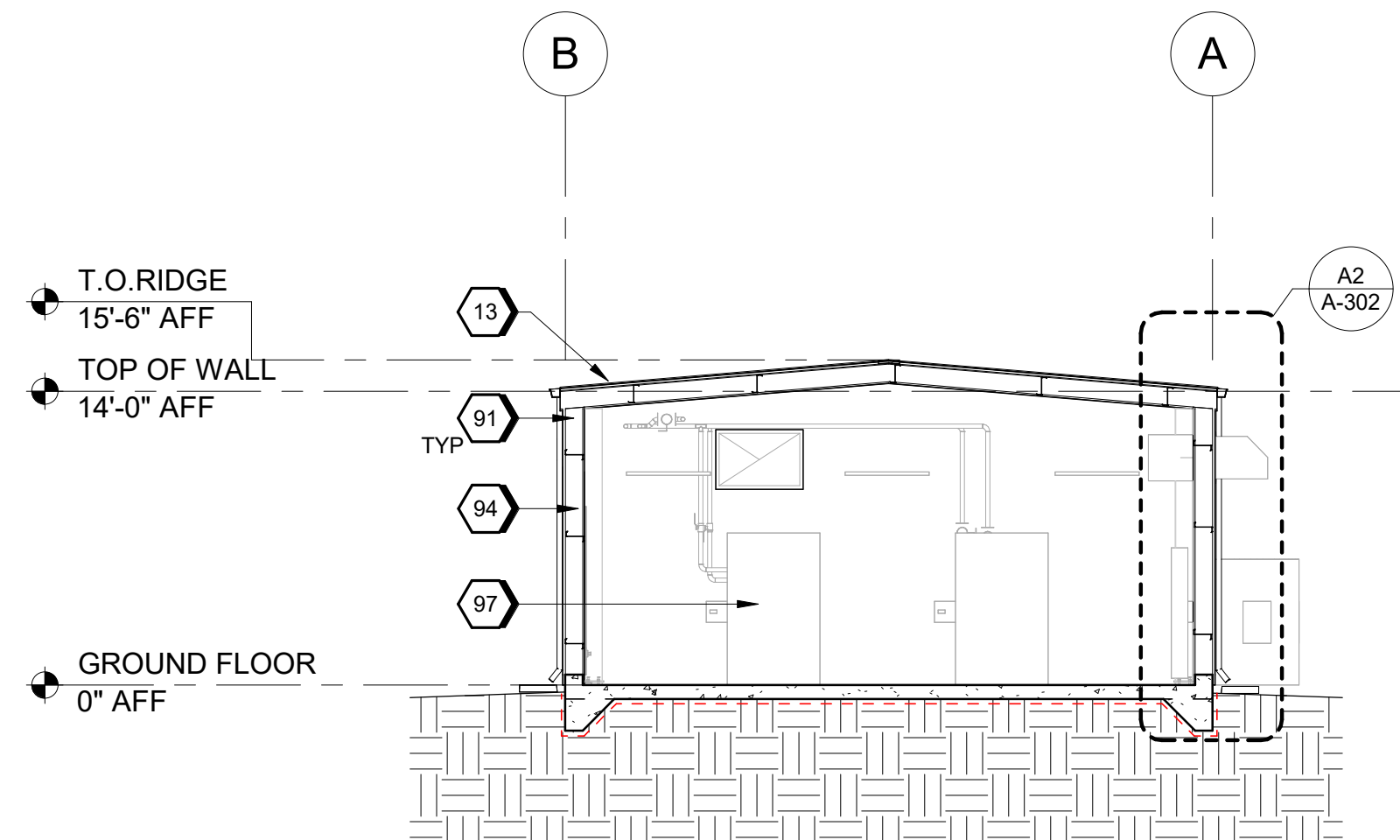
5

D

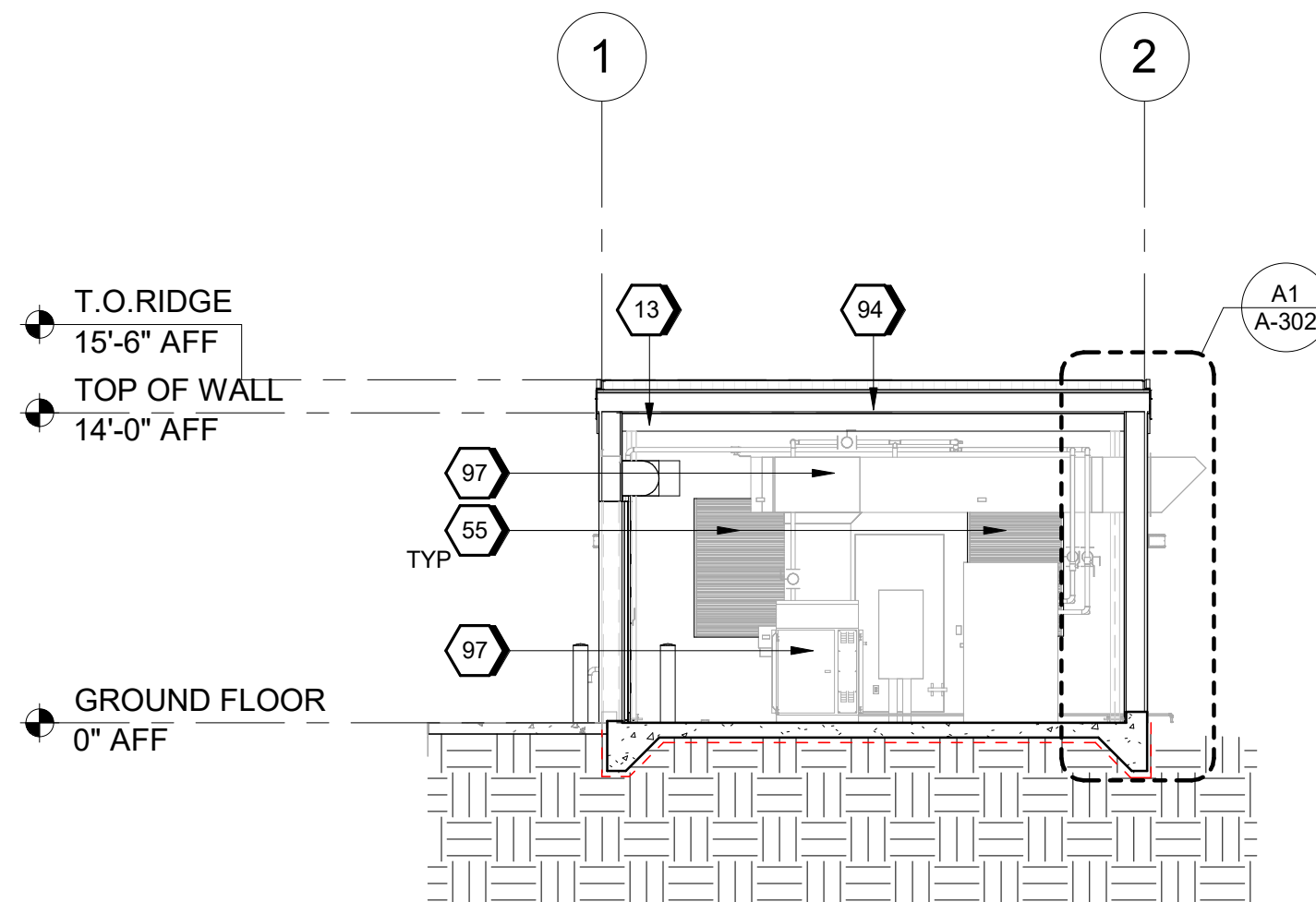
C

B

A



A1 BUILDING SECTION
SCALE 1/8" = 1'-0"



A3 BUILDING SECTION
SCALE 1/8" = 1'-0"

GENERAL SHEET NOTES

- A. FINISHED FLOOR ELEVATION 0'-0" IS A REFERENCE ELEVATION FOR COORDINATION WITH BUILDING ELEMENTS. ACTUAL ELEVATION IS INDICATED ON CIVIL DRAWINGS
- B. FOR ARCHITECTURAL GENERAL NOTES, SYMBOLS, AND LEGEND, REFER TO DRAWING G-002.
- C. FOR BUILDING CODE DATA AND LIFE SAFETY PLAN, REFER TO DRAWING G-101.
- D. FURNITURE AND EQUIPMENT IS SHOWN FOR DISCIPLINE COORDINATION ONLY.

SHEET KEYNOTES

- 13 RP-2 - REFER TO CAMPUS DETAILS A-800
- 55 METAL LOUVER - TYPICAL
- 91 PRE ENGINEERED STL STRUCTURAL FRAMING - TYPICAL
- 94 PRE ENGINEERED STL GIRT - TYPICAL
- 97 MECHANICAL EQUIPMENT - TYPICAL

Jacobs
1889 Bryan Street Suite 1900, Dallas, TX 75201
Tel: 214-638-0145 Fax: 214-638-0447
Entity: Jacobs Consultants Inc.
License: Professional Engineer
License No.: 0000000000
Exp. Date: 01/31/2025



Compressor-Building
Camden OSD
Calhoun County, Arkansas
Aerojet Rocketdyne

Jacobs **MABIOZ**

ARCHITECTURE
BUILDING SECTIONS

GRAPHIC SCALE(S)



SHEET NO

A-301

SCALE As indicated

DATE 09/18/2024

PROJ D3754502

DWG CMDN-OSD_Compressor-Building_A-301

PLOT DATE/TIME: 9/18/2024 9:24:54 AM