

1

2

3

4

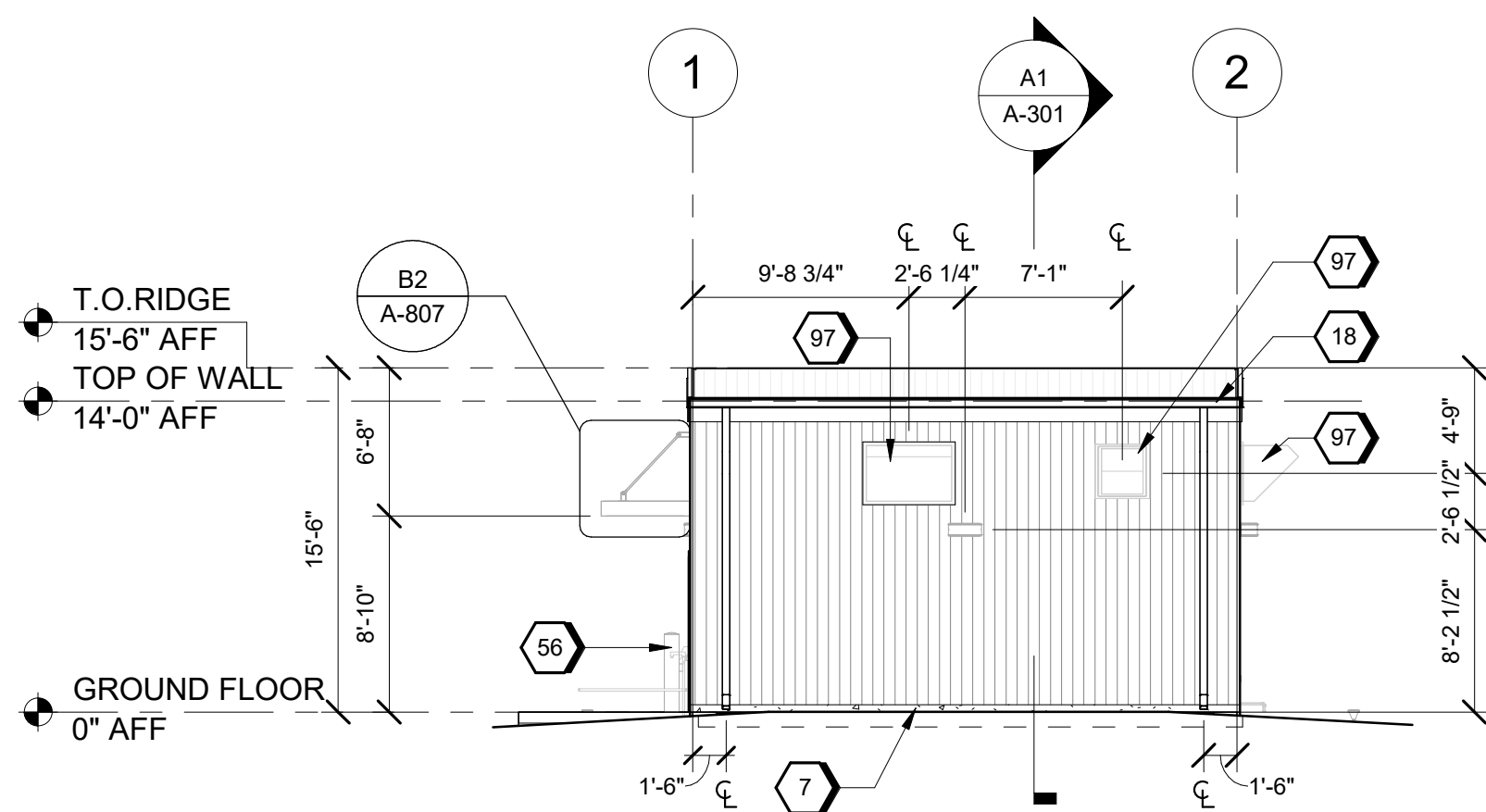
5

D

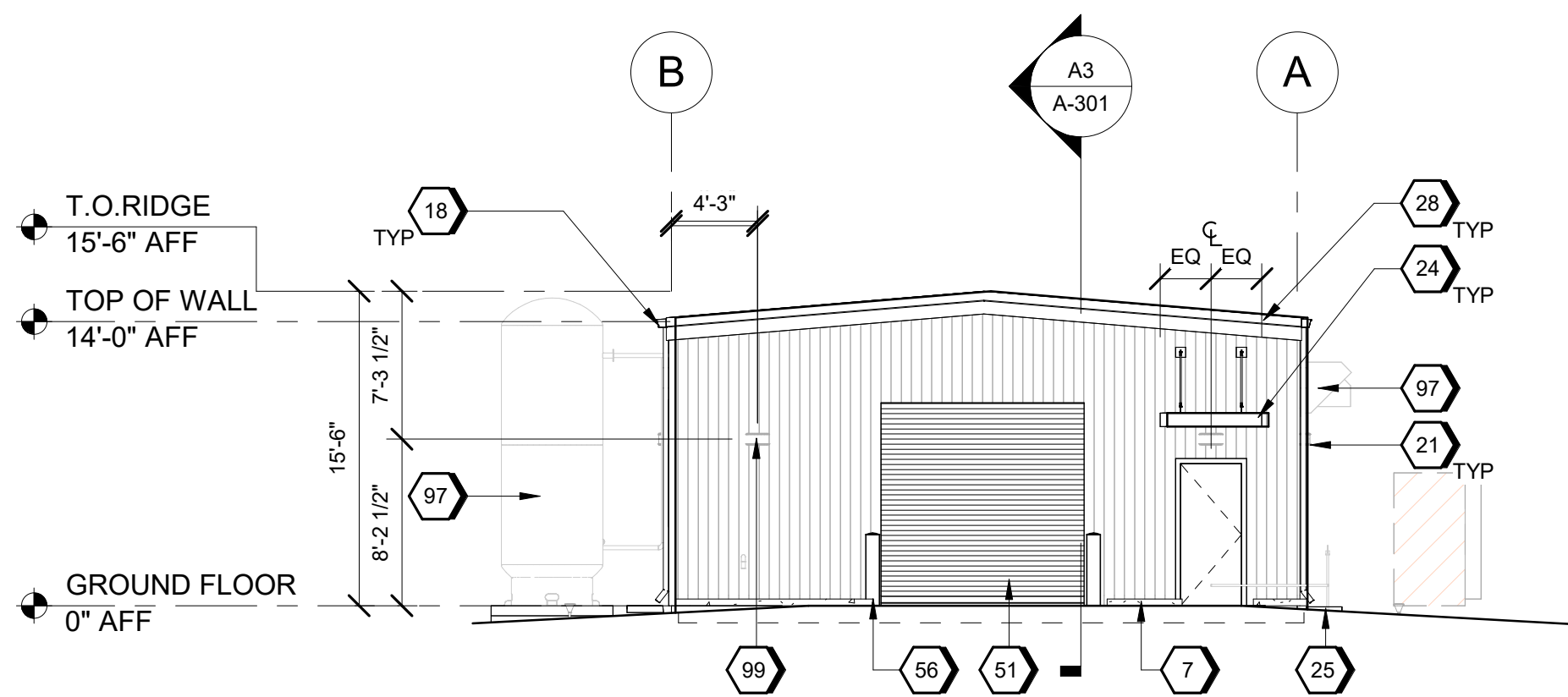
C

B

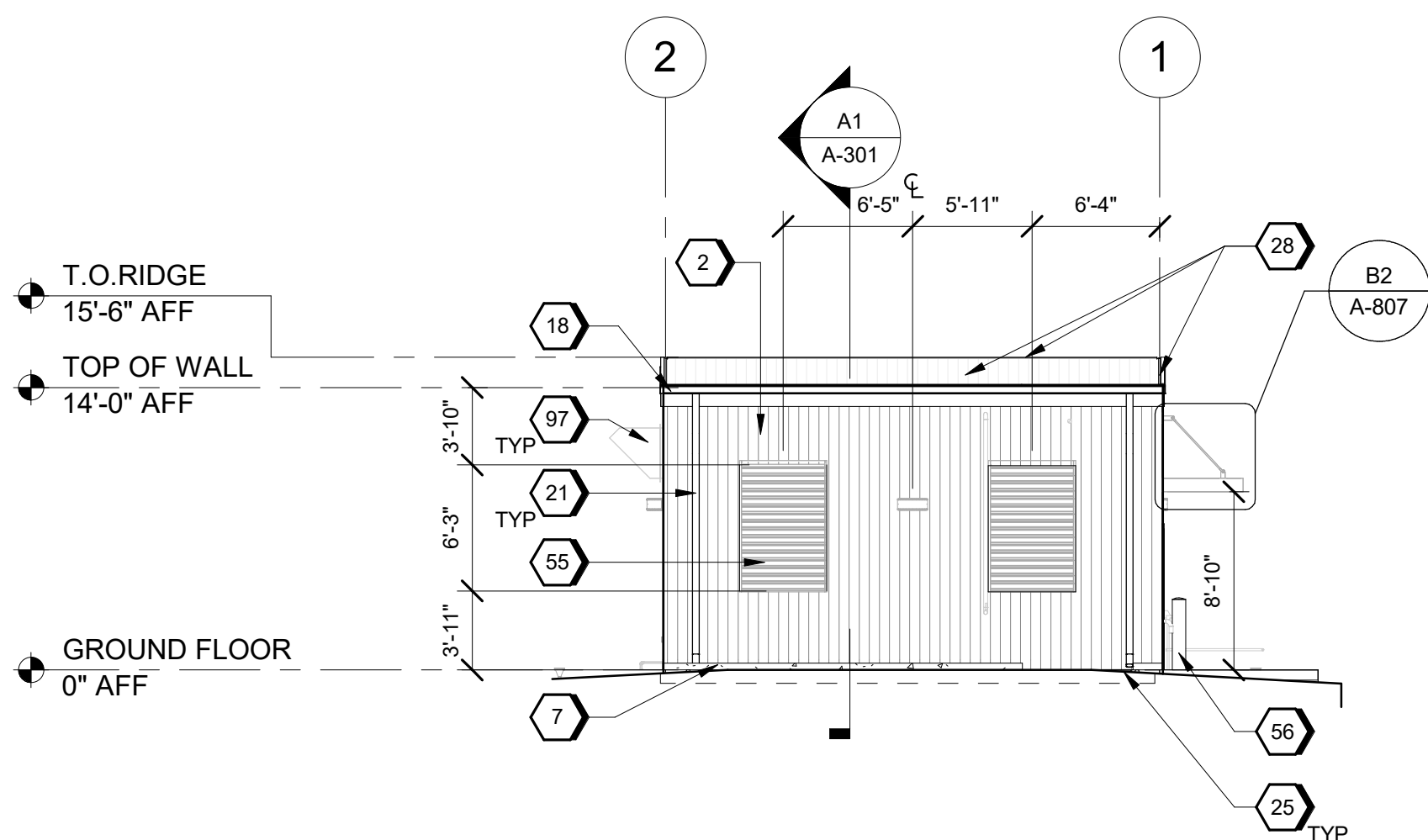
A



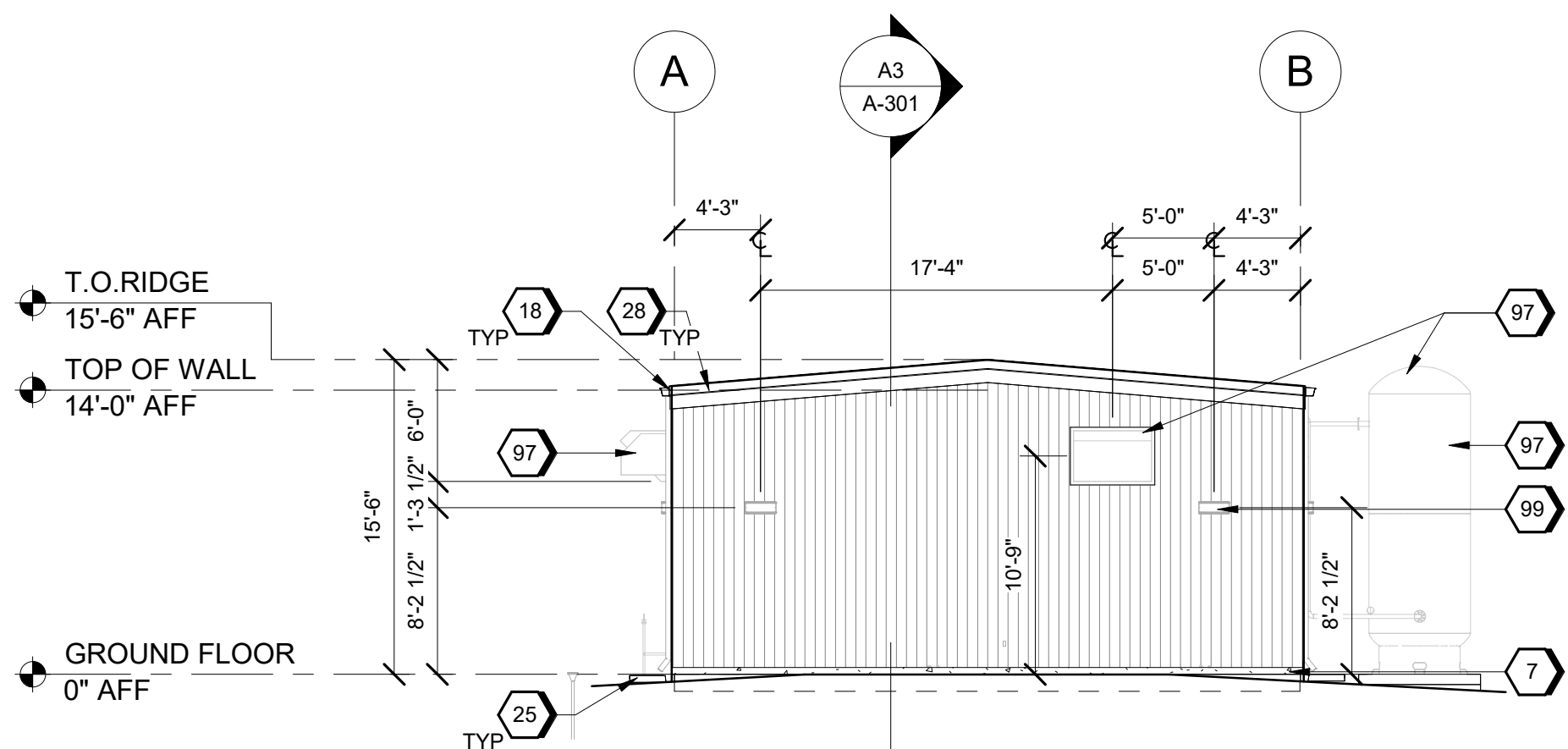
B1 SOUTH ELEVATION
SCALE 1/8" = 1'-0"



B3 WEST ELEVATION
SCALE 1/8" = 1'-0"



A1 NORTH ELEVATION
SCALE 1/8" = 1'-0"



A3 EAST ELEVATION
SCALE 1/8" = 1'-0"

GENERAL SHEET NOTES

- A. FINISHED FLOOR ELEVATION 0'-0" IS A REFERENCE ELEVATION FOR COORDINATION WITH BUILDING ELEMENTS. ACTUAL ELEVATION IS INDICATED ON CIVIL DRAWINGS
- B. FOR ARCHITECTURAL GENERAL NOTES, SYMBOLS, AND LEGEND, REFER TO DRAWING G-002.
- C. FOR BUILDING CODE DATA AND LIFE SAFETY PLAN, REFER TO DRAWING G-101.
- D. FURNITURE AND EQUIPMENT IS SHOWN FOR DISCIPLINE COORDINATION ONLY.

#) SHEET KEYNOTES

- 2 CONCRETE BASE
- 7 CONT. METAL GUTTER 5" DEEP X 6" WIDE. COLOR TO MATCH THE BUILDING
- 18 PEMB: SHEET METAL DOWNSPOUT AND BRACKETS -TYP. 5" DIAMETER. COLOR TO MATCH THE BUILDING
- 21 PEMB: ENTRY DOOR CANOPY - TYPICAL
- 24 PRECAST CONCRETE RAINWATER SPLASH BLOCK AT EACH DOWNSPOUT DISCHARGE; PLACE ON FINISH GRADE; SLOPE DOWN AWAY FROM BUILDING-TYPICAL
- 25 PEMB: SHEET METAL ROOFING, RIDGE CAP, RAKE & EAVE TRIM AND FLASHING - TYPICAL
- 51 MOTORIZED INSULATED OVERHEAD COILING DOOR AS SCHEDULED
- 55 METAL LOUVER - TYPICAL
- 56 4'-0" x 6" DIA CONCRETE FILLED GALV STL PIPE BOLLARD, PAINTED SAFETY YELLOW
- 97 MECHANICAL EQUIPMENT - TYPICAL
- 99 ELECTRICAL EQUIPMENT - TYPICAL

GRAPHIC SCALE(S)

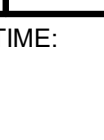
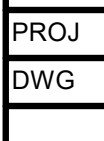
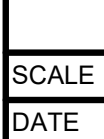
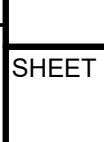


Jacobs

1888 Bryan Street Suite 1900, Dallas, TX 75201
Tel: 214-638-0145 Fax: 214-638-0447
Entity: Jacobs Consultants Inc.
License: Professional Engineer
Exp. Date: 01/31/2025



Compressor-Building
Camden OSD
Calhoun County, Arkansas
Aerojet Rocketdyne



SHEET NO

A-201

SCALE As indicated

DATE 09/18/2024

PROJ D3754502

DWG CMEN-OSD_Compressor-Building_A-201

PLOT DATE/TIME: 9/18/2024 9:24:53 AM