



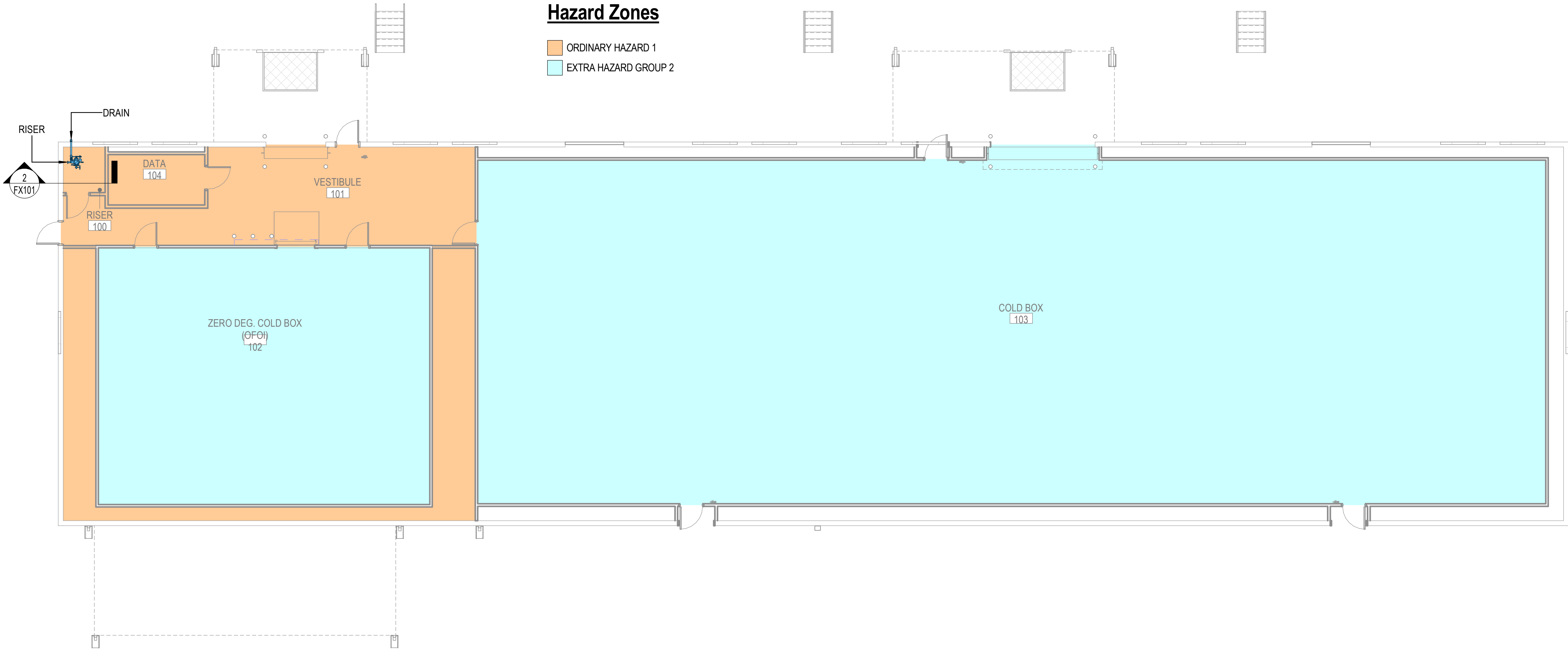


NOTE:

1. THIS BUILDING SHALL BE PROVIDED WITH A DRY PIPE SYSTEM AND A NITROGEN GENERATOR TO PRESSURIZE THE SYSTEM IN ACCORDANCE WITH 2019 NFPA 13.
2. SPRINKLERS MUST PENETRATE INSULATED CEILING PANELS.
3. PROVIDE A HAZARD CLASSIFICATION OF ORDINARY HAZARD GROUP 1 FOR AREA ABOVE ZERO DEG. COLD BOX (OFCI) 102 AND COLD BOX 103.
4. PROVIDE A PACKAGED DIESEL DRIVEN HORIZONTAL SPLIT CASE FIRE PUMP WITH A RATED CAPACITY OF 1500 GPM AT A TOTAL HEAD RATING OF 70 PSI AT 85 HP. THE FIRE PUMP SHALL BE INSTALLED IN ACCORDANCE WITH 2019 NFPA 20 AND 2020 NFPA 70.
5. PROVIDE A WATER STORAGE TANK WITH A CAPACITY OF 187,200 GALLONS SIZED AND INSTALLED IN ACCORDANCE WITH 2018 NFPA 22 AND 2019 NFPA 72. THE WATER TANK SHALL BE A BOLTED TANK PROVIDED WITH A TANK HEATER AND AUTOMATIC REFILL.
6. PACKAGED FIRE PUMP HOUSING AND WATER STORAGE TANK SHALL BE LOCATED AS SHOWN ON CIVIL SHEET CS101. THE CONSTRUCTION OF THE PACKAGED FIRE PUMP HOUSING AND WATER STORAGE TANK SHALL BE A DELEGATED DESIGN PROVIDED BY THE CONTRACTOR. SEE ELECTRICAL SHEETS E-601 AND E-602 FOR ADDITIONAL REQUIREMENTS THAT ARE INCLUDED IN THE DELEGATED DESIGN.

Hazard Zones

- ORDINARY HAZARD 1
- EXTRA HAZARD GROUP 2



1 FIRE PROTECTION FLOOR PLAN  
1/8" = 1'-0"

2 RISER DETAIL  
1/4" = 1'-0"

Project  
AEROJET BUILDING 2SH8  
COLD BOX  
CONVERSION  
EAST CAMDEN,  
ARKANSAS

Design Phase  
CONSTRUCTION DOCUMENTS

Revisions		
No.	Date	Description

Stamp

CERTIFICATE OF AUTHORITY  
CROMWELL ARCHITECTS/ENGINEERS  
#5  
ARKANSAS-ENGINEER

STATE OF ARKANSAS  
REGISTERED PROFESSIONAL ENGINEER  
No. 19823  
10-09-2024

- Notes
1. CROMWELL ARCHITECTS ENGINEERS, INC. ALL RIGHTS RESERVED
  2. THIS SHEET DESIGNED FOR COLOR PRINTING. CRITICAL INFORMATION MAY BE LOST WITH BLACK AND WHITE PRINTING.

Project Number 2024-079  
Issue Date 10-09-2024  
Sheet Title

FIRE PROTECTION FLOOR PLAN

Sheet Number

FX101

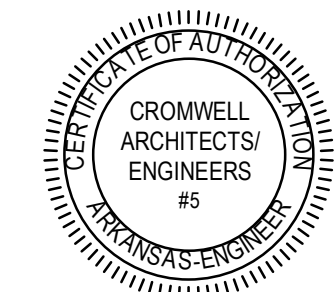
Project  
**AEROJET BUILDING 2SH8**  
**COLD BOX**  
**CONVERSION**  
**EAST CAMDEN,**  
**ARKANSAS**

Design Phase

**CONSTRUCTION**  
**DOCUMENTS**

Revisions		
No.	Date	Description

Stamp



10-09-2024

Notes

1. CROMWELL ARCHITECTS ENGINEERS, INC. ALL RIGHTS RESERVED
2. THIS SHEET DESIGNED FOR COLOR PRINTING. CRITICAL INFORMATION MAY BE LOST WITH BLACK AND WHITE PRINTING.

Project Number

2024-079

Issue Date

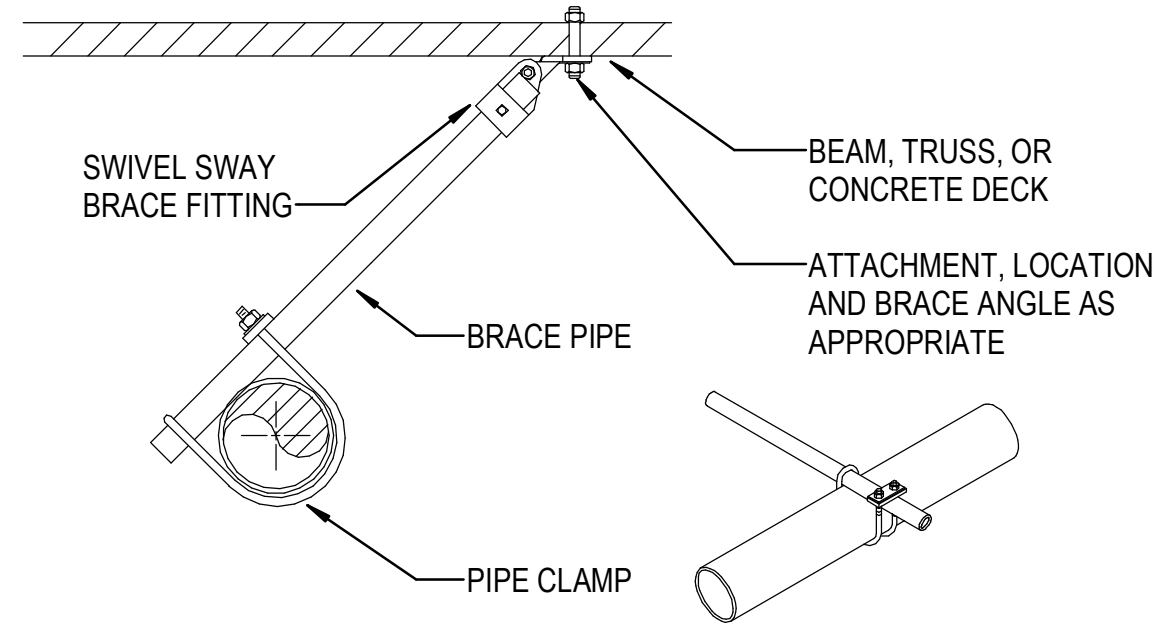
10-09-2024

Sheet Title

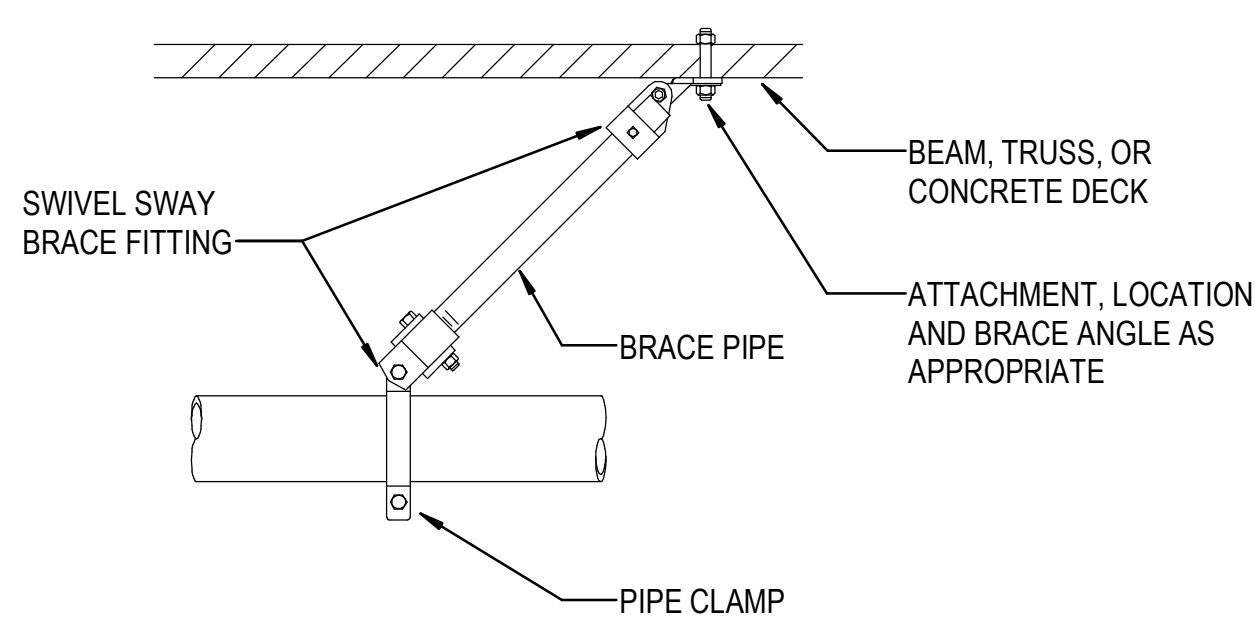
**FIRE PROTECTION**  
**DETAILS**

Sheet Number

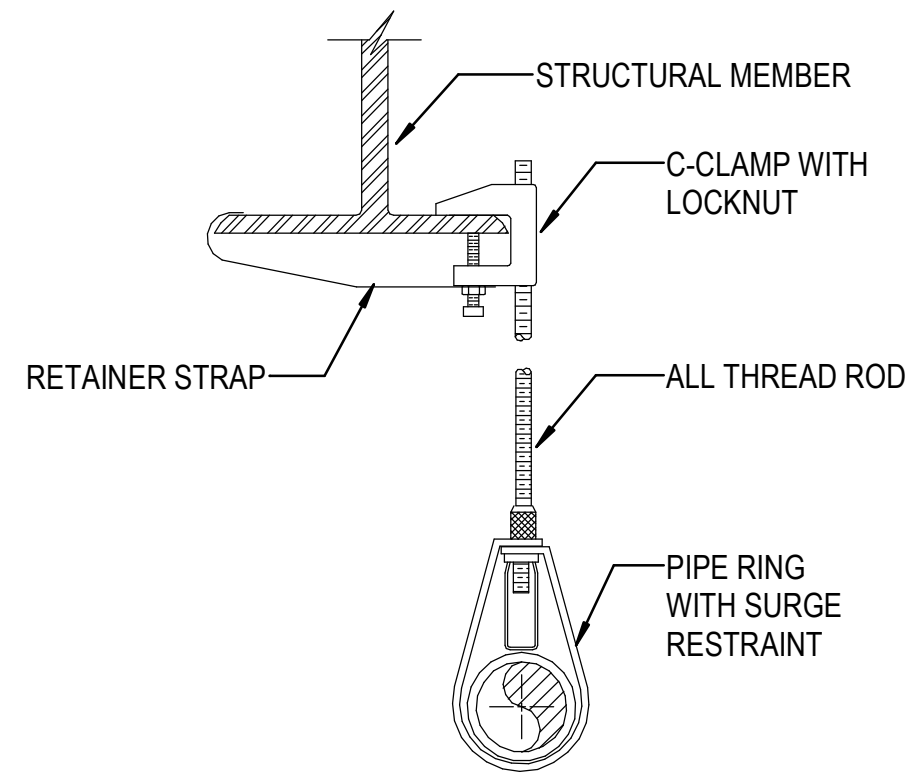
**FX501**



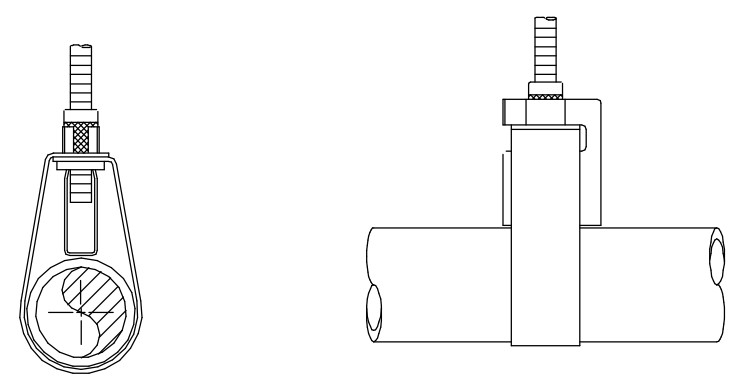
**1 LATERAL SWAY BRACE**  
NOT TO SCALE



**2 LONGITUDINAL SWAY BRACE DETAIL**  
NOT TO SCALE

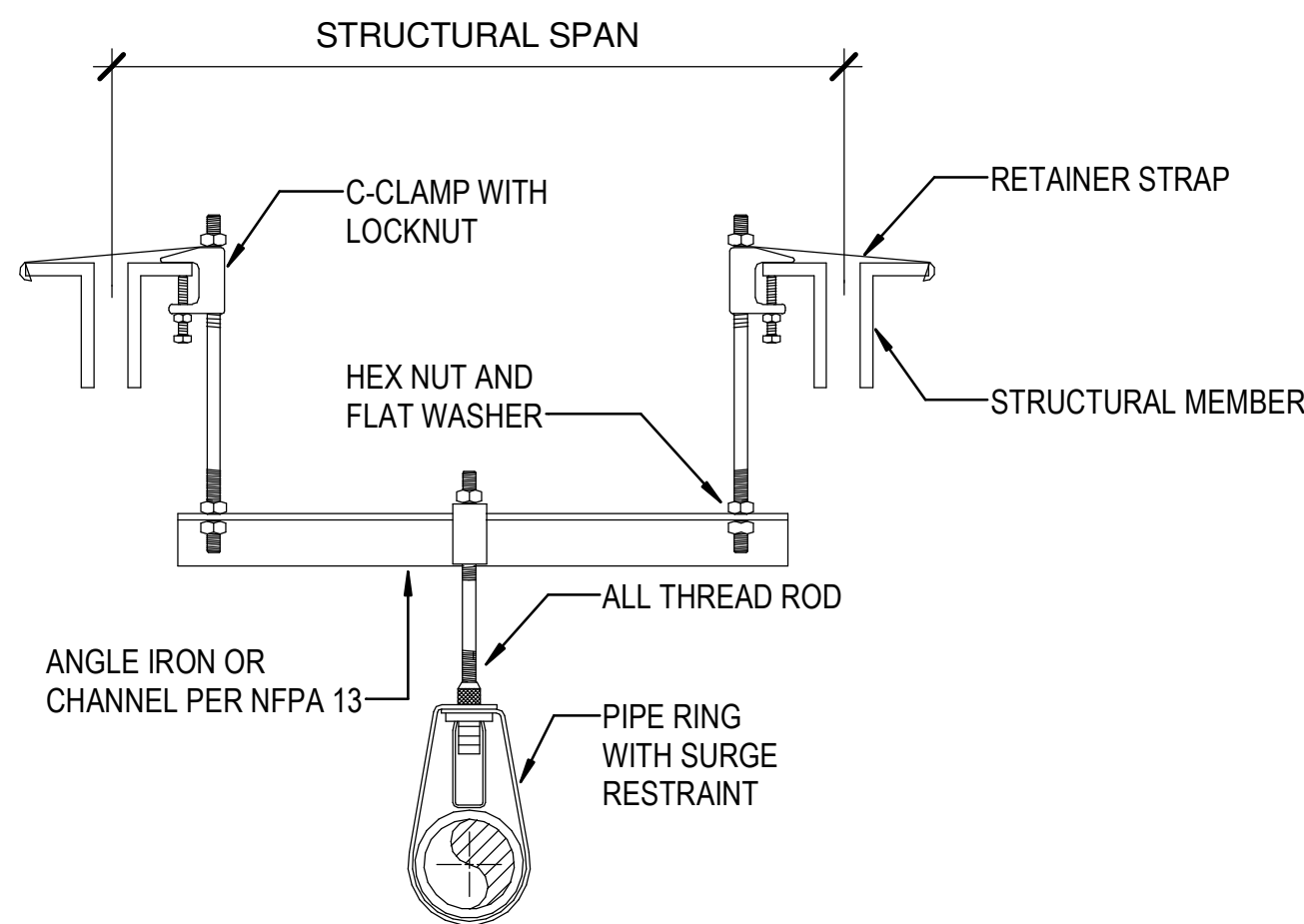


**3 BEAM CLAMP HANGER**  
NOT TO SCALE

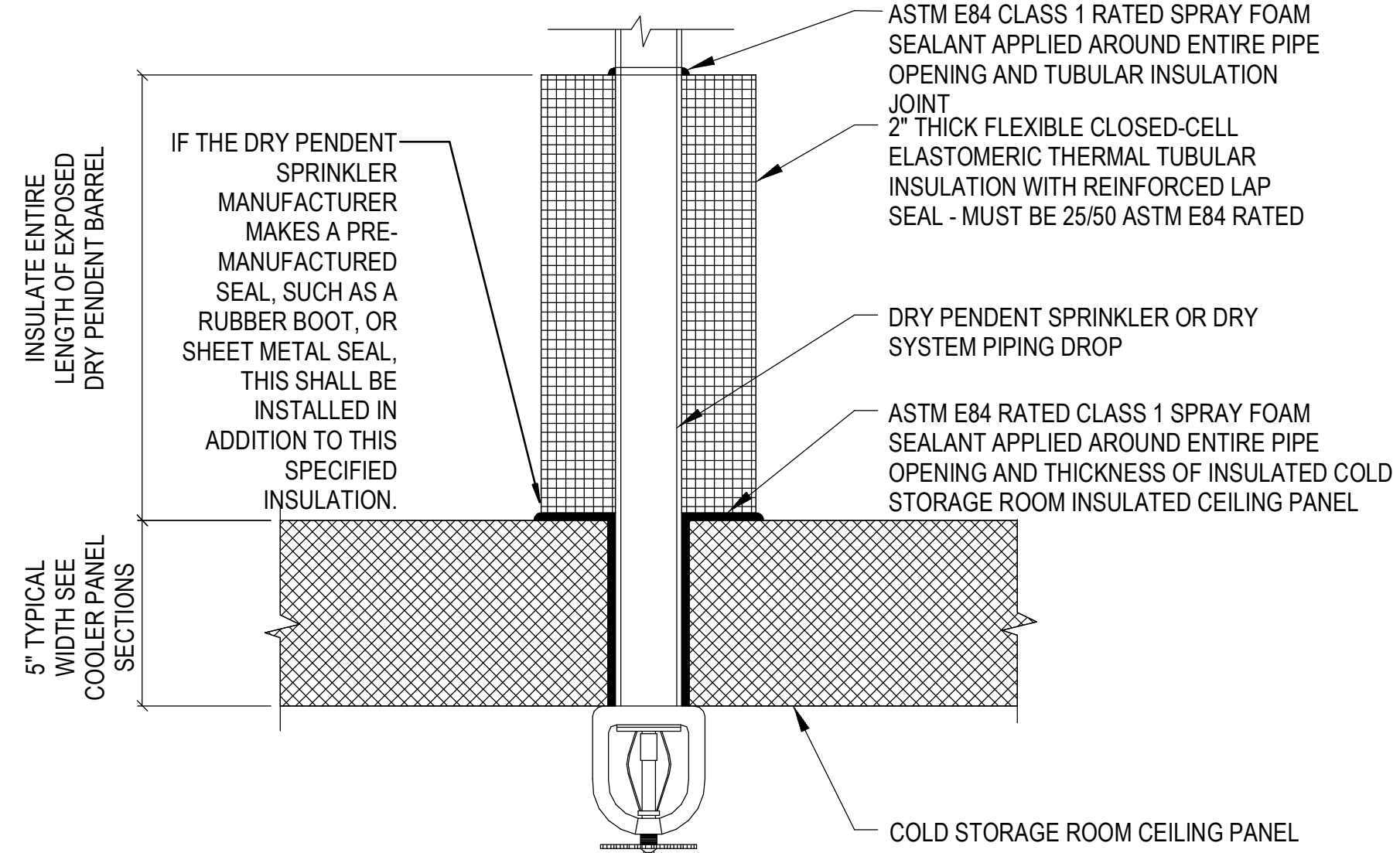


NOTE: SURGE RESTRAINERS ARE TO BE USED ONLY WITH BAND HANGERS TO RESTRAIN THE UPWARD MOVEMENT OF PIPE AS IT OCCURS DURING SPRINKLER HEAD ACTIVATION OR SEISMIC ACTIVITY. INSTALL AT ENDS OF LINES AND AT 30' INTERVALS ON BRANCH LINES.

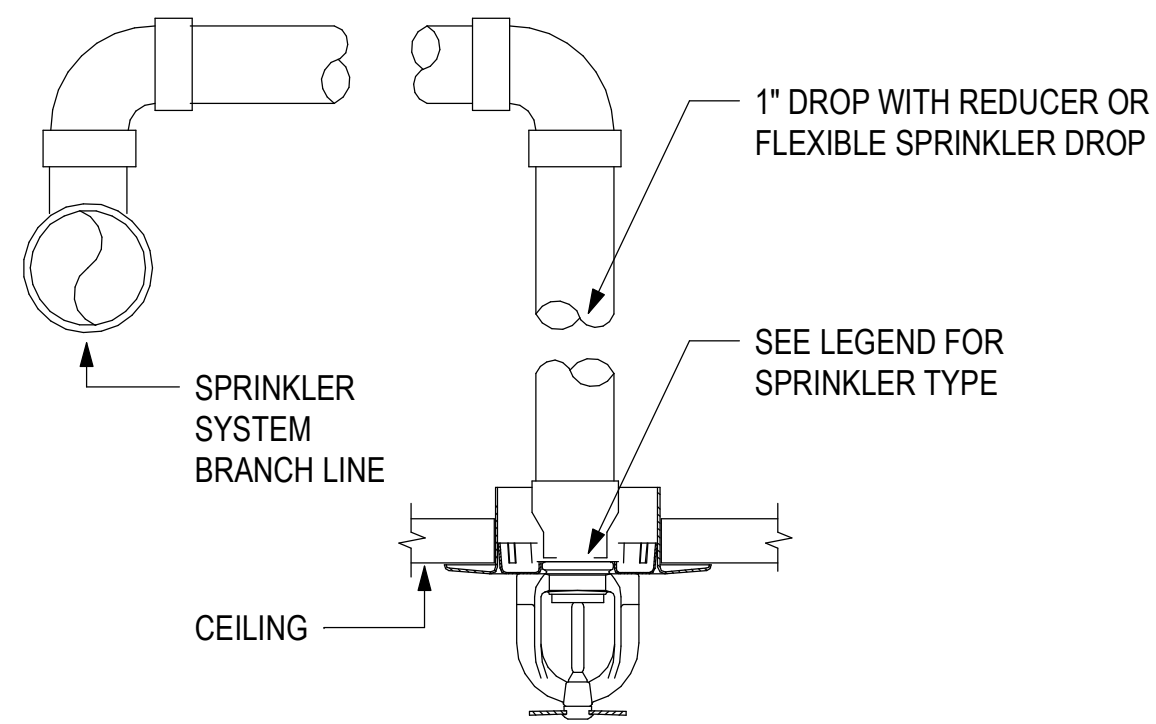
**4 HANGER SURGE**  
NOT TO SCALE



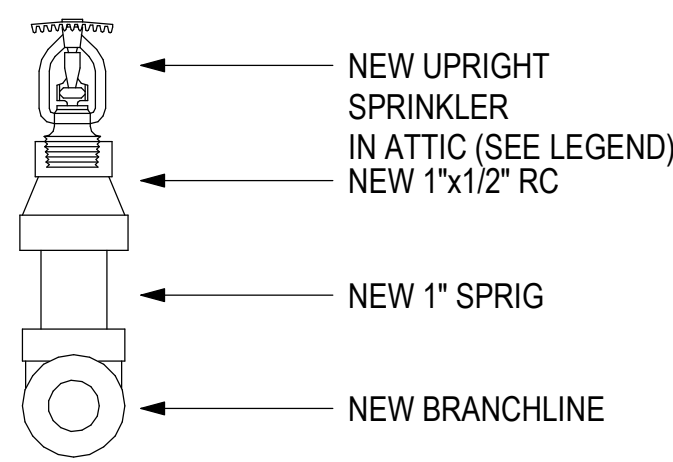
**5 TRAPEZE HANGER**  
NOT TO SCALE



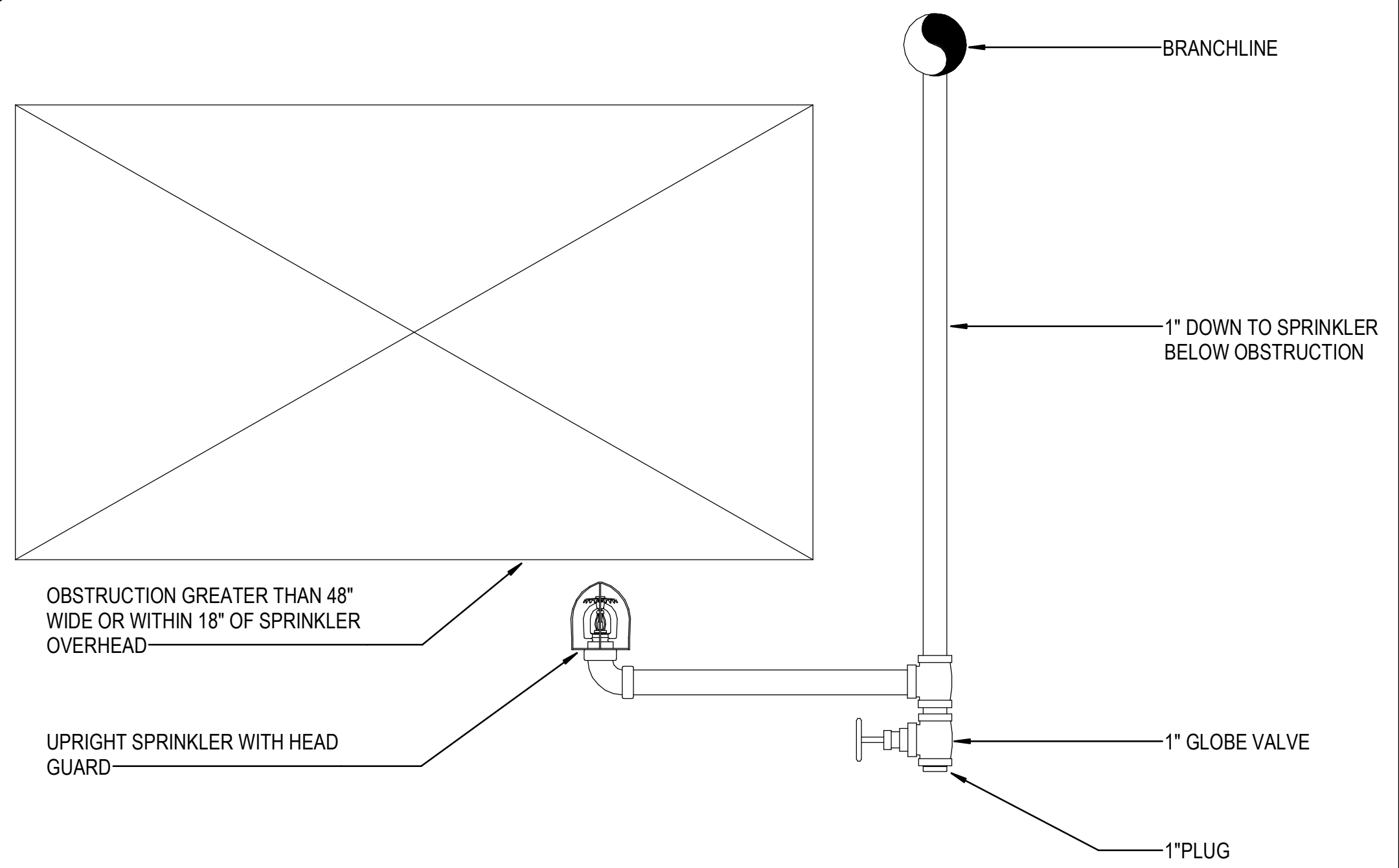
**6 SPRINKLER COLD STORAGE**  
NOT TO SCALE



**7 RETURN BEND**  
NOT TO SCALE



**8 UPRIGHT SPRINKLER DETAIL**  
NOT TO SCALE



**9 SPRINKLER UNDER OBSTRUCTION**  
NOT TO SCALE