

SPECIFICATIONS

Indoor Freezer (-10°F) (with floor)
Vinyl NSF gasket (1/16" joint thickness), Cam-Lock layout SNI
SPECIAL INSTRUCTIONS
Export crating

WALL PANELS

Construction: 4" urethane (R-32)
Exterior Finish: Stucco galvalume
Interior Finish: Stucco galvalume
Ceiling connections: Camlock
Floor connections: Camlock

CEILING PANELS

Construction: 5" high density urethane (R-40)
Exterior Finish: Metal
Interior Finish: Stucco galvalume
Ceiling Caps: Factory mounted
Live Load: 10 psf

FLOOR PANELS

Model: Pallet Jack Floor panels model #PUFN
Manual pallet jacks only, 2000 lb rolling load maximum capacity
Construction: 4" high density urethane (R-32)
w/ .063 aluminum diamond tread (LP) @ interior
over 3/4" plywood
w/ Fiberglass grating @ 24"
w/ Metal @ exterior

DOORS

[A]: 36" x 84" flush model G3 self-closing freezer door
*** LEAF NOT RAISED FOR FLOORING ***
Brand: Artic Temp
Frame: 4" high density urethane (R-32), 3-sided
w/ Stucco galvalume both sides
w/ 24 ga. stainless steel 430 (magnetic) liners
w/ 4-sided heat cable in frame [FL-4-110W]
(26' -5" x 5 ohms/ft (132 total) @ 4.2 w/ft + Pepi - 120V, 1A)
w/ 3/4" stub-through concealed PVC conduit
Leaf: 4" thick, 3-side lap, standard height
w/ Stucco galvalume both sides
w/ Magnetic gasket
w/ 2 1/4" black neoprene sweep
(3) Component Hardware #W59 spring assisted adjustable hinge
(1) Kason #27C cylinder locking deadbolt handle
(1) Kason #27C twist-off knob inside release
(1) Kason 'PUSH' pad
(1) Kason #1094 hydraulic door closer (polished chrome)
(1) Weiss 24DT3-L, 3-way switch and thermometer combo @ ext.
(1) Kason 1832 heated air vent (23W, 120V, .2A)
(1) .080 smooth aluminum threshold

[B]: 96" x 96" R-Plus Doors manual horizontal sliding door (RIGHT SLIDE) door
Liners: Stucco galvalume
Frame: None

PARTS
(21) ea. (6" x 1 1/2") x 96" x .080 smooth aluminum Combination interior cove base/seismic tie-down @ floor level
(22) ea. interior seismic tie-down @ ceiling level-(2" x 2") x 96" x 26 ga. stucco galvalume
(77) ea. prefabricated floor seismic restraint system-Simpson Iiten or similar concrete screws @ 24"o/c


(16) ea. Kason #1809 vapor proof LED light fixture (29W, 120V, 0.25A) -(LED lamp built-in.)

SPECIAL PANELS

W40: w/ (2) ea. 3/4" concealed PVC conduit - stubbed through ceiling
w/ (1) ea. Weiss 24DT3-L, 3-way switch and thermometer combo w/ 6 ft probe (120V, 15A max. load)
Door [A]: w/ (1) ea. Kason 1847 magnum flow heated air vent (56W, 120V, .5A)

NOTES

STANDARD NOTES
To prevent condensation, a minimum 2" from the walk-in exterior surface is required. High humidity conditions may require force ventilation in addition to clearance.



NSF LABEL
N.S.F. LISTED (STD #7)
COMPONENT N.S.F. GASKET @ ALL PANEL JOINTS

THE MINIMUM BTU'S SHOWN ARE BASED ON NSF STANDARD #7, SECTION 5, PARAGRAPH 5.36.7, REQUIREMENTS (REF. TABLE 1). THESE NUMBERS ARE NOT INTENDED TO BE USED FOR SIZING OF REFRIGERATION UNITS FOR THIS WALK-IN. THE MANUFACTURER RECOMMENDS CONSULTING WITH A QUALIFIED ENGINEER OR REFRIGERATION CONTRACTOR.

Installation site floor must be true and level within 3/16" per 10' or additional costs may be incurred.

R-Plus Doors sliding and vertical lift doors shall not be considered means of egress. Check code egress requirements for your application.

ELECTRICAL

Field electrician to verify maximum acceptable load for light switches.If load is too high, then relay type controls should be used.
After wiring devices, All conduits must be sealed to stop moisture transfer through electrical raceways.
Failure to seal device per NEC codes WILL VOID WARRANTY.

REVISIONS

01 02/05/2025 New Revision - Proposed Interior Post & Beam Ceiling Support

Written Specs Will Need To Be Revised To Show Post & Beam Ceiling Support

- SUBMITTAL DRAWING -

Customer Note: The Manufacturer's responsibility is limited to manufacturing this product in accordance with these drawings. The customer or their representative in signing these drawings is taking responsibility for overall size and fit around building walls, columns and ceiling restrictions, door locations, openings for equipment supplied by others, specifications and accessories listed. Production will not begin until these drawings are approved.

- ☐ APPROVED FOR FABRICATION WITH NO CHANGES
- ☐ APPROVED FOR FABRICATION WITH CHANGES
- ☐ REV/SE AND RESUBMIT

Signature: _____

☐ Email me "For Construction" drawings.

ED'S SUPPLY COMPANY INC.
EL DORADO, AR

AEROJET
CAMDEN, AR



ARTIC TEMP
209 Long Meadow Dr
Salisbury, NC 28147
Phone: 704-636-5131
Fax: 704-637-0919
www.imperial-brown.com

24-AT-07838-01

24-AT-07838.04.01-05

NOT FOR CONSTRUCTION

REVISED SUBMITTALS

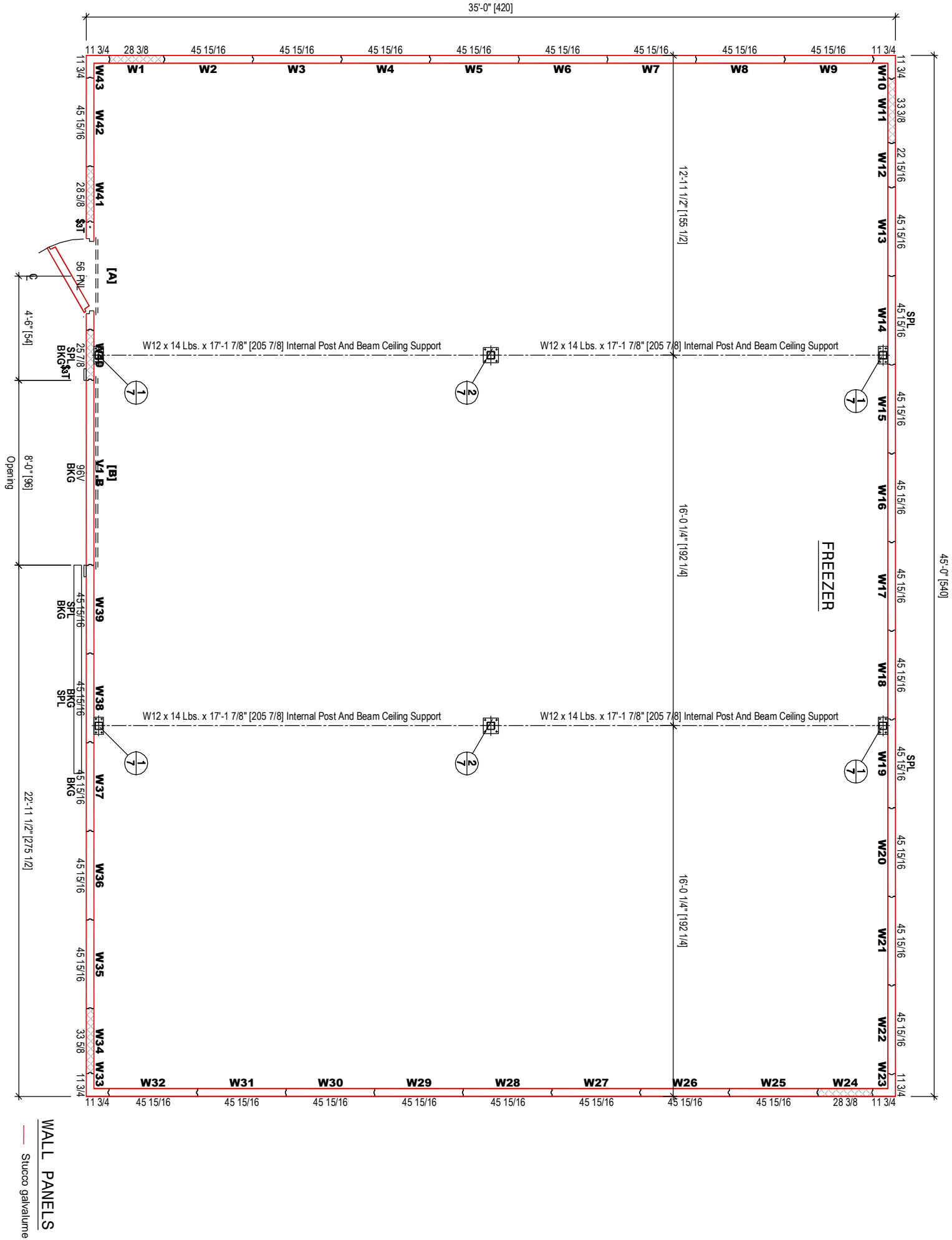
DO NOT SCALE THIS DRAWING

SCALE: 3/16" = 1'-0"

DATE DRAWN: 12/18/2024
DATE PRINTED: 2/5/2025
BY: Ron Pucha
CHK'D BY:

DRW#: 24-AT-07838-01
BOX: 1 OF 1
SHEET: 1 OF 7

CONSTRUCTION LEGEND:
4" urethane (R-32)
5" high density urethane (R-40)
4" high density urethane (R-32)



ARTIC TEMP
209 Long Meadow Dr
Salisbury, NC 28147
Phone: 704-636-5131
Fax: 704-637-0919
www.imperial-brown.com

ED'S SUPPLY COMPANY INC.
EL DORADO, AR
AEROJET
CAMDEN, AR

24-AT-07838-01
24-AT-07838.04.01-05

NOT FOR CONSTRUCTION

REVISED SUBMITTALS

DO NOT SCALE THIS DRAWING

SCALE: 3/16" = 1'-0"

DATE DRAWN: 12/18/2024

DATE PRINTED: 2/5/2025

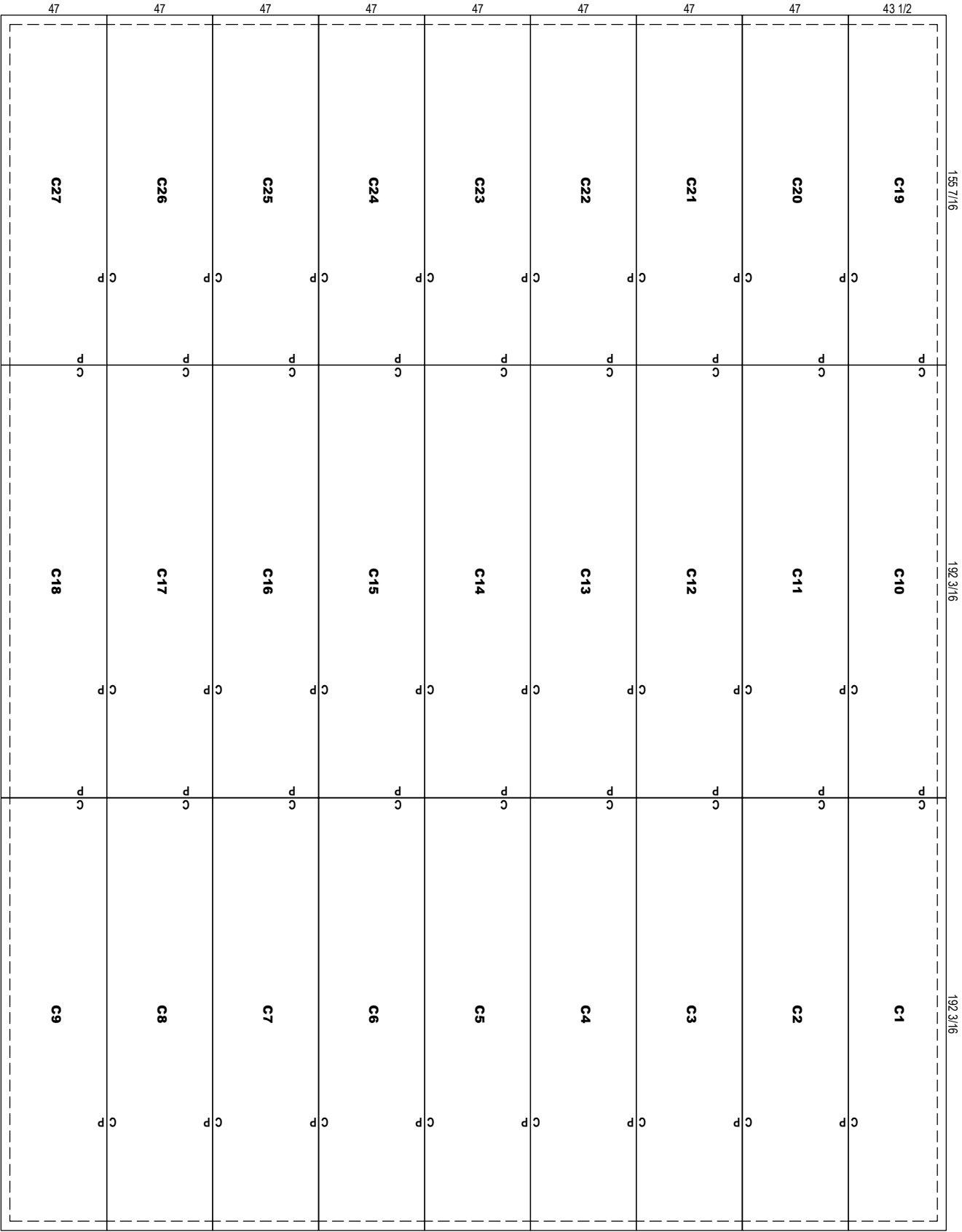
BY: Ron Pucha

CHKD BY:


DRW#: 24-AT-07838-01

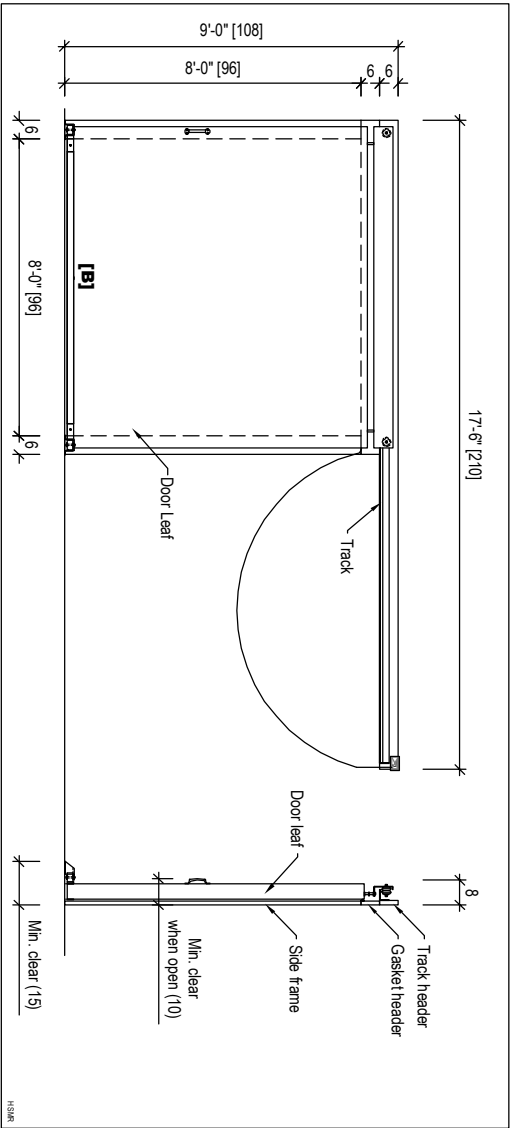
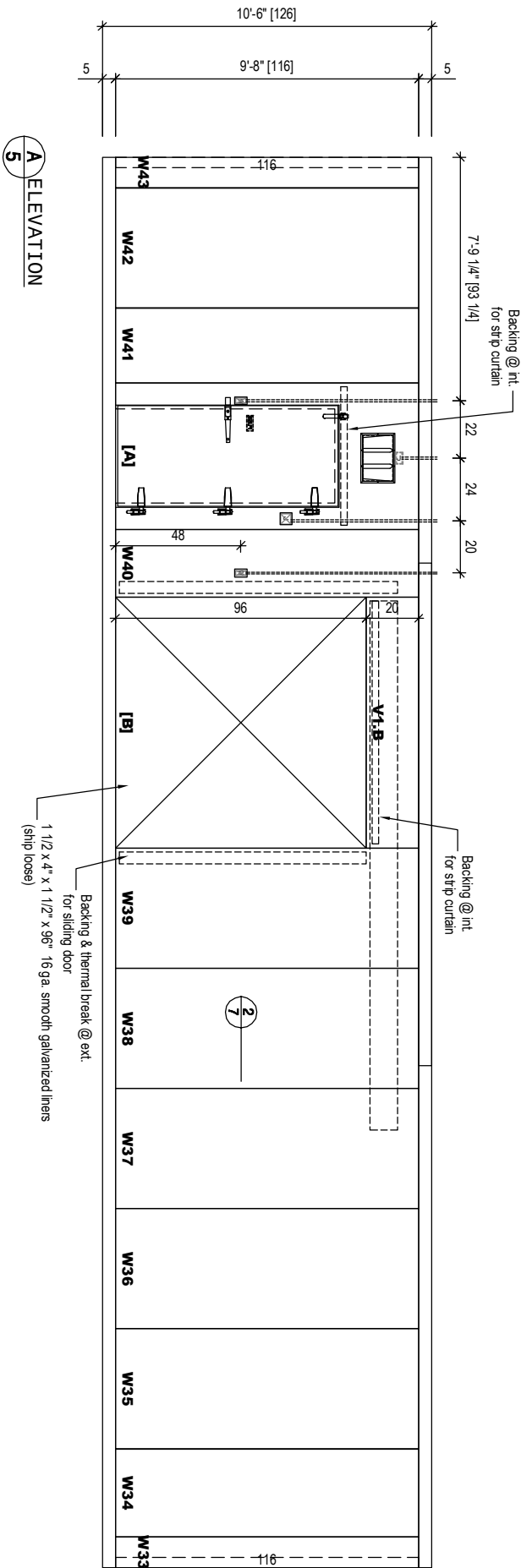
BOX: 1 OF 1

SHEET: 2 OF 7



CEILING PANELS

<div>DO NOT SCALE THIS DRAWING</div> <div>SCALE: 3/16" = 1'-0"</div> <div>DATE DRAWN: 12/18/2024</div> <div>DATE PRINTED: 2/5/2025</div> <div>BY: Ron Pucha</div> <div>CHKD BY:</div> <div>DRW#: 24-AT-07838-01</div> <div>BOX: 1 OF 1</div> <div>SHEET: 3 OF 7</div>	<div><div>ARTIC TEMP 209 Long Meadow Dr Salisbury, NC 28147 Phone: 704-636-5131 Fax: 704-637-0919 www.imperial-brown.com</div></div>	<div>ED'S SUPPLY COMPANY INC. EL DORADO, AR</div> <div>AEROJET CAMDEN, AR</div> <div>-</div>	<div>24-AT-07838-01</div> <div>24-AT-07838.04.01-05</div> <div>NOT FOR CONSTRUCTION</div> <div>REVISED SUBMITTALS</div>
---	---	--	---



24-AT-07838-01

24-AT-07838.04.01-05

NOT FOR CONSTRUCTION

REVISED SUBMITTALS

ED'S SUPPLY COMPANY INC.
EL DORADO, AR

AEROJET
CAMDEN, AR



ARTIC TEMP
209 Long Meadow Dr
Salisbury, NC 28147
Phone: 704-636-5131
Fax: 704-637-0919
www.imperial-brown.com

DO NOT SCALE THIS DRAWING

SCALE: 3/16" = 1'-0"

DATE DRAWN: 12/18/2024

DATE PRINTED: 2/5/2025

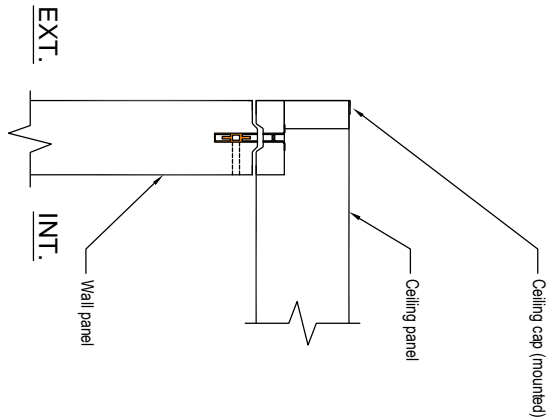
BY: Ron Pucha

CHKD BY:

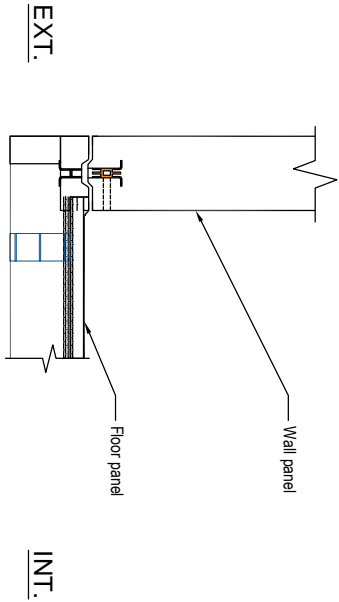
DRW#: 24-AT-07838-01

BOX: 1 OF 1

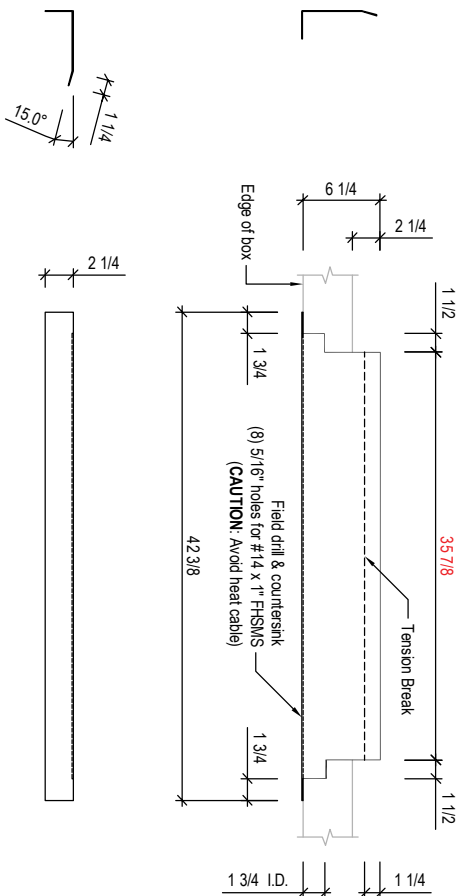
SHEET: 5 OF 7



1 CEILING CONNECTION

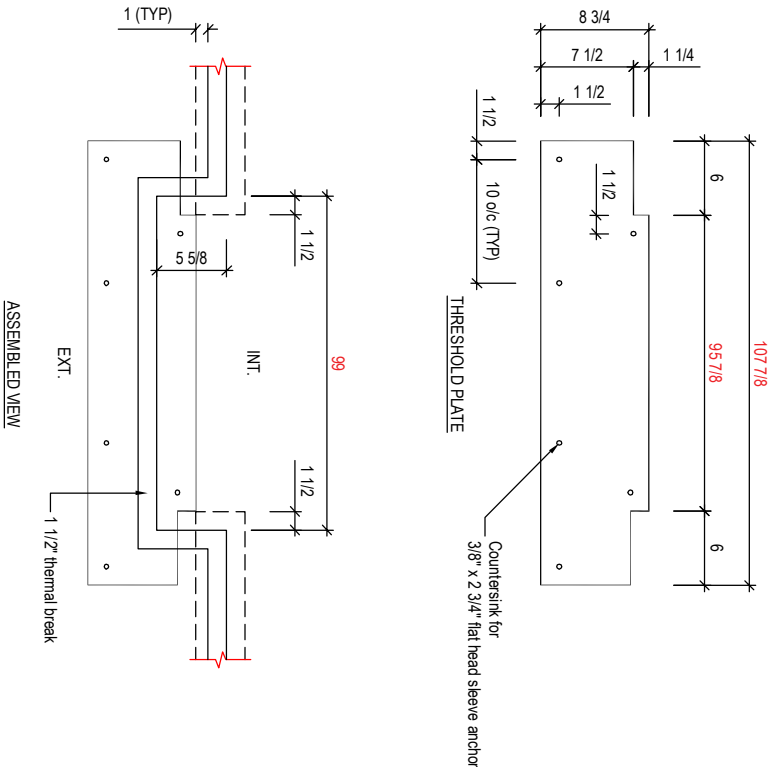


2 FLOOR CONNECTION



3 THRESHOLD FOR SWING DOOR

NOTE: Seal threshold/jamb joint w/ silicone



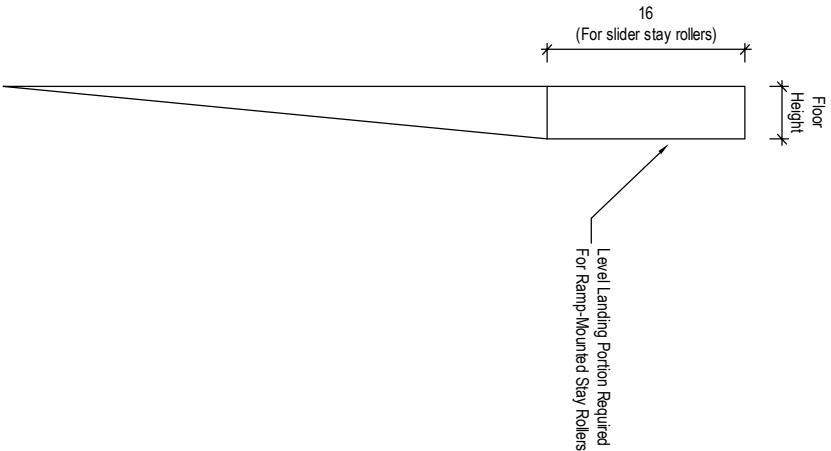
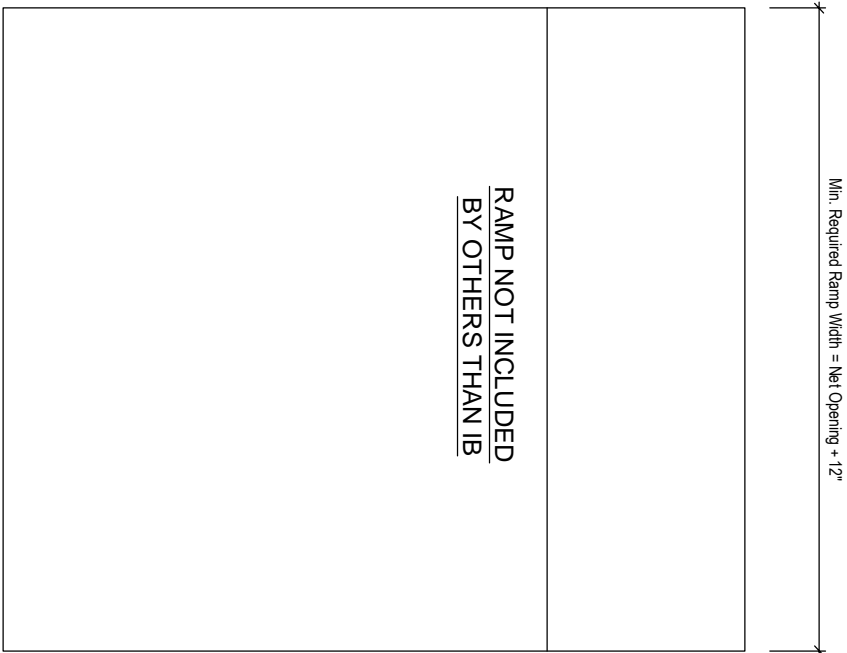
ASSEMBLED VIEW

NOTE: Seal threshold/jamb joint w/ silicone

4 THRESHOLD FOR SLIDING DOOR

5 RAMP CONFIGURATION FOR SLIDING DOOR

Ramp Not Included In Order - Ramp By Others Than IB



24-AT-07838-01

24-AT-07838.04.01-05

NOT FOR CONSTRUCTION

REVISED SUBMITTALS



ARTIC TEMP
209 Long Meadow Dr
Salisbury, NC 28147
Phone: 704-636-5131
Fax: 704-637-0919
www.imperial-brown.com

ED'S SUPPLY COMPANY INC.
EL DORADO, AR

AEROJET
CAMDEN, AR

DO NOT SCALE THIS DRAWING

SCALE: 3/16" = 1'-0"

DATE DRAWN: 12/18/2024

DATE PRINTED: 2/5/2025

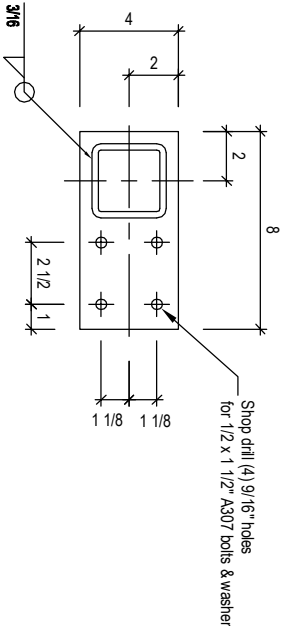
BY: Ron Pucha

CHKD BY:

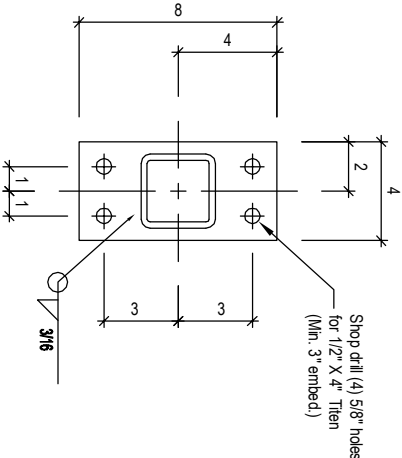
DRW#: 24-AT-07838-01

BOX: 1 OF 1

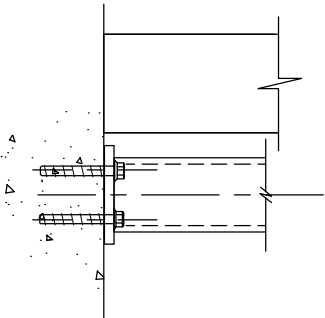
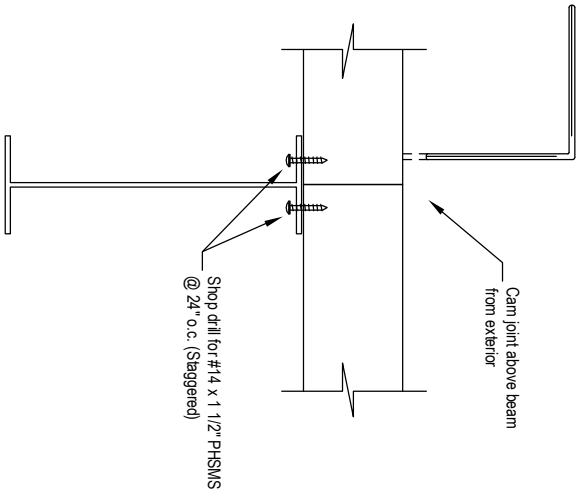
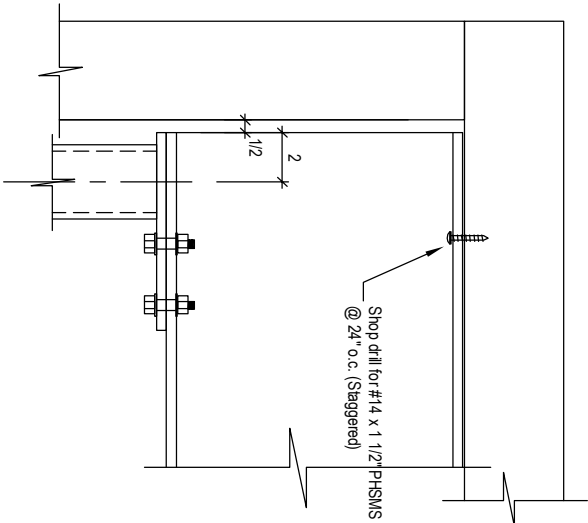
SHEET: 6 OF 7



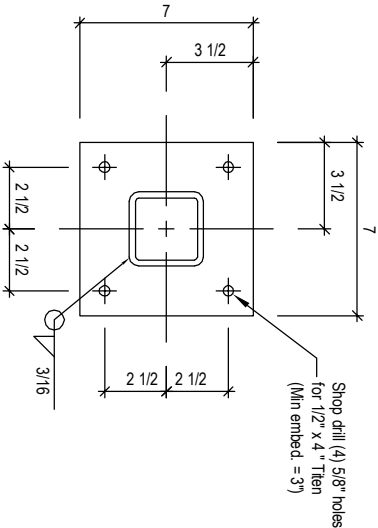
END POST TOP PLATE
HSS 3"x3"x3/16"
PL 1/2"x4"x8"



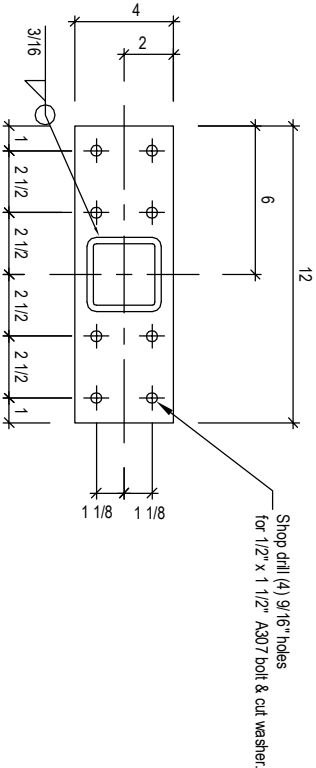
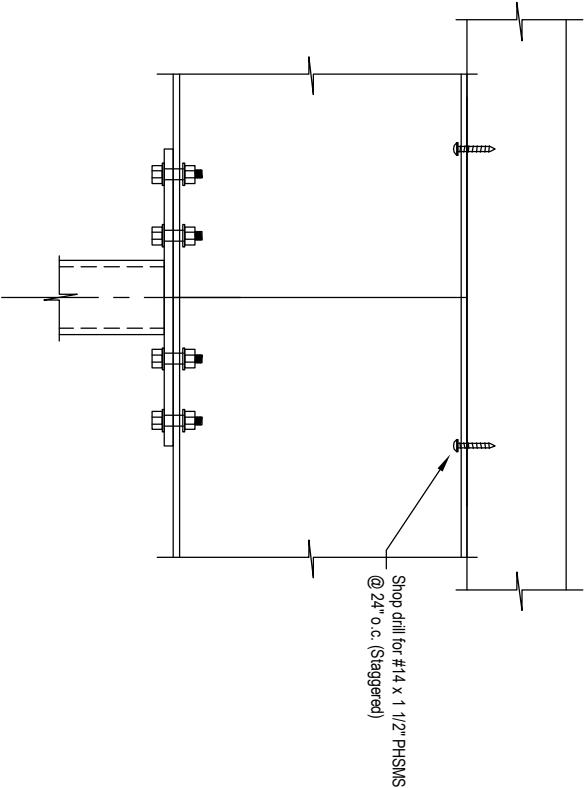
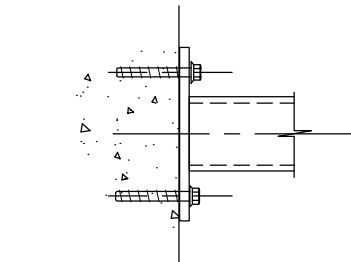
END POST BASE PLATE
HSS 3"x3"x3/16"
PL 1/2"x 4"x8"



1
CEILING SUPPORT
3" interior column



BASE PLATE
HSS 3" x 3" x 3/16"
PL 1/2" x 7" x 7"



TOP PLATE
HSS 3" x 3" x 3/16"
PL 1/2" x 4" x 12"

2
MIDDLE POST CEILING SUPPORT
3" mid post

24-AT-07838-01
24-AT-07838.04.01-05

NOT FOR CONSTRUCTION

REVISED SUBMITTALS



ARTIC TEMP
209 Long Meadow Dr
Salisbury, NC 28147
Phone: 704-636-5131
Fax: 704-637-0919
www.imperial-brown.com

ED'S SUPPLY COMPANY INC.
EL DORADO, AR

AEROJET
CAMDEN, AR

DO NOT SCALE THIS DRAWING

SCALE: 3/16" = 1'-0"

DATE DRAWN: 12/18/2024

DATE PRINTED: 2/5/2025

BY: Ron Pucha

CHKD BY:

DRW#: 24-AT-07838-01

BOX: 1 OF 1

SHEET: 7 OF 7