



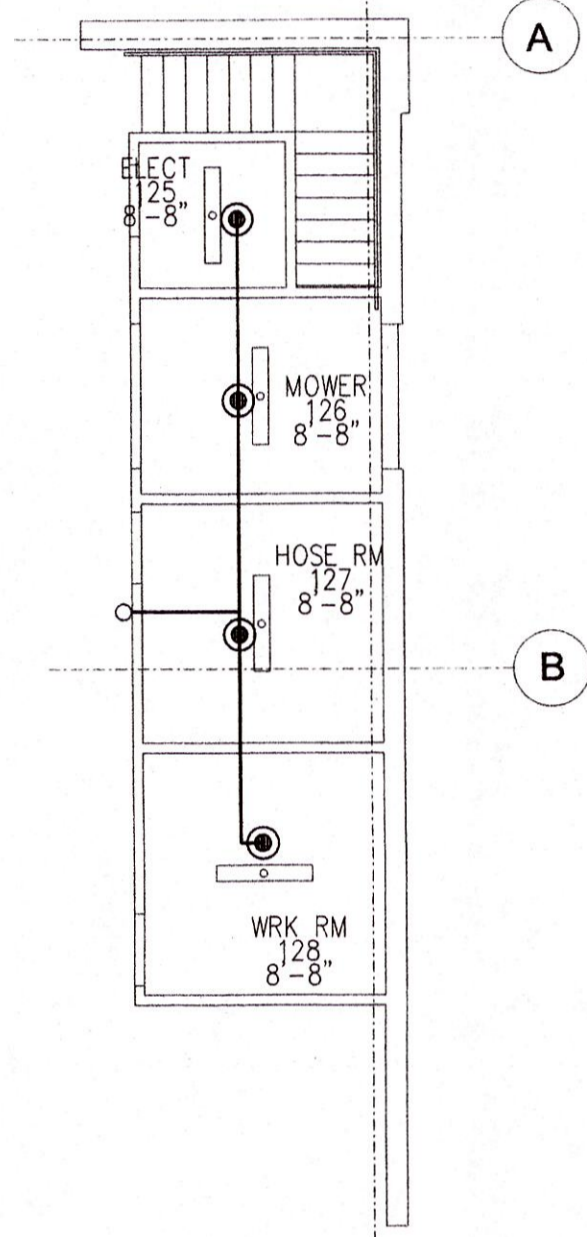
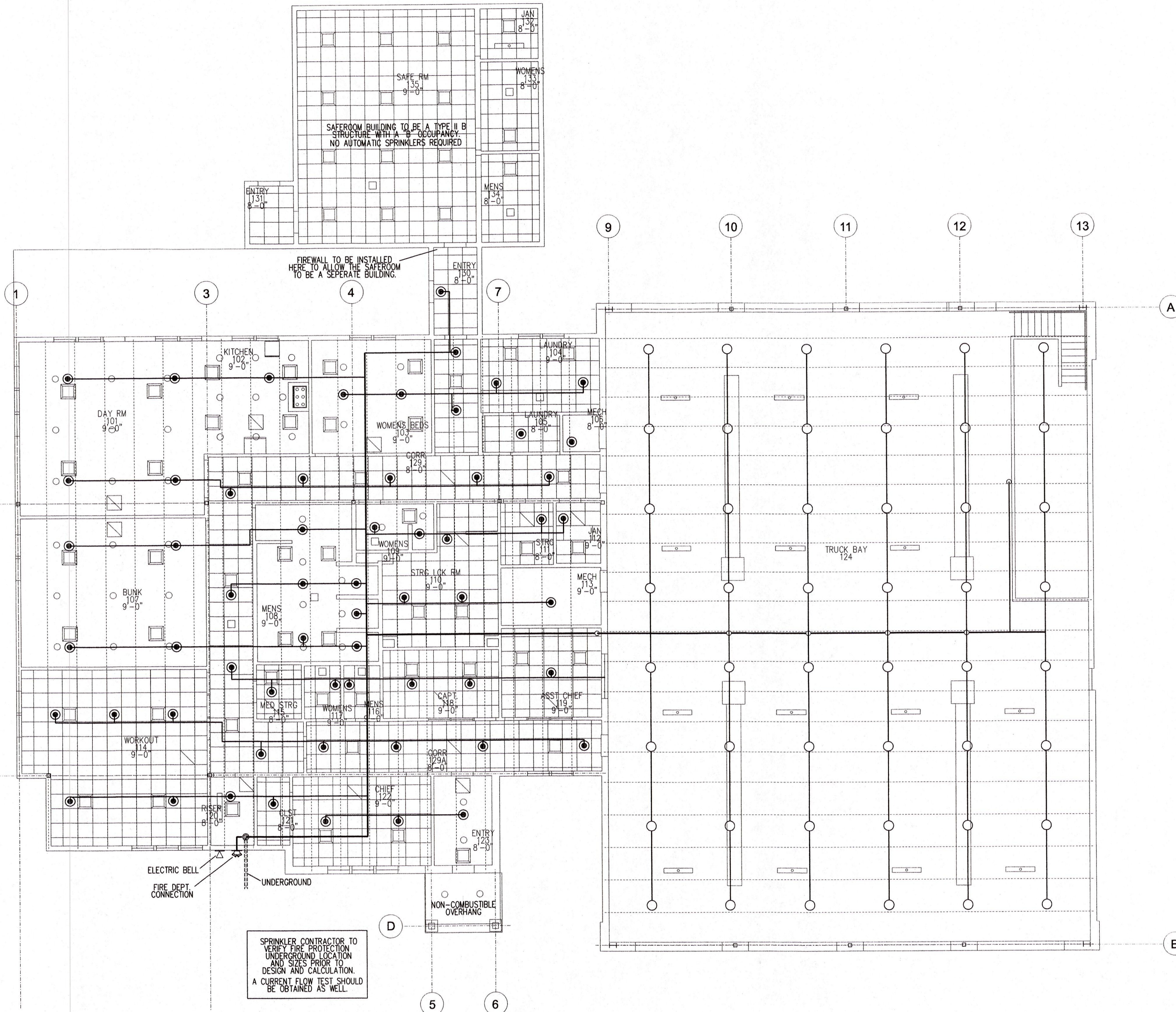
MECHANICAL, ELECTRICAL, PLUMBING ENGINEERS  
**MILLER NEWELL ENGINEERS INC.**  
 510 THIRD STREET NEWPORT, ARKANSAS 72112  
 PHONE: (870) 232-6574 FAX: (870) 232-6533  
 EMAIL: MLNEWELL@GOL.COM

THESE DRAWINGS AND THE DESIGN SHOWN HEREON ARE THE PROPERTY OF HORD ARCHITECTS. THE REPRODUCTION, COPYING OR USE OF THIS INFORMATION WITHOUT HORD ARCHITECTS' WRITTEN CONSENT IS PROHIBITED, AND ANY INFRACTION WILL BE SUBJECT TO LEGAL ACTION.  
 HORD ARCHITECTS

RENOVATION OF:  
**TRUMANN FIRE STATION**  
 801 WEST MAIN ST, TRUMANN, AR 72472

PROJECT NO.: 2023-02  
 DRAWN BY:  
 CHECKED BY:  
 DATE: 07-31-2023  
 REVISIONS:

SHEET NO.:  
**FP2**

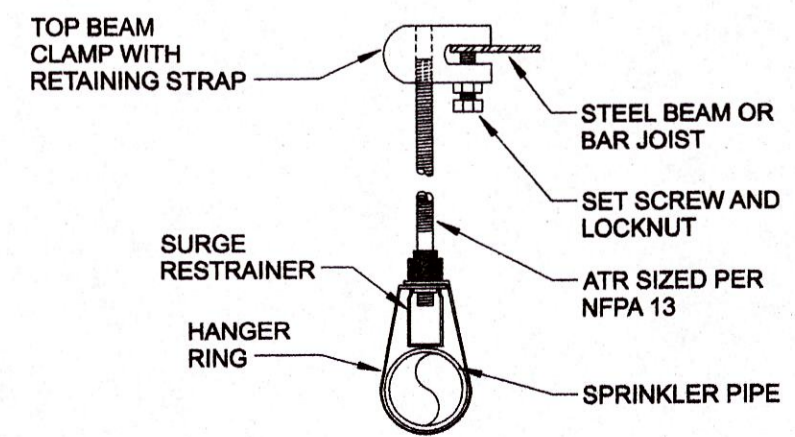
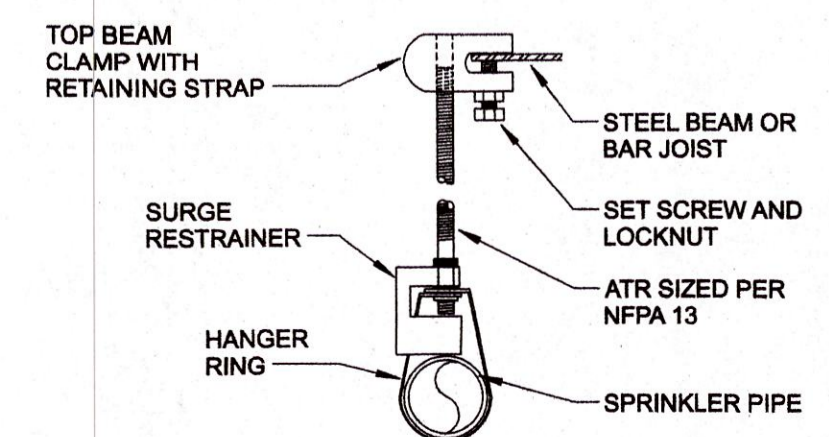
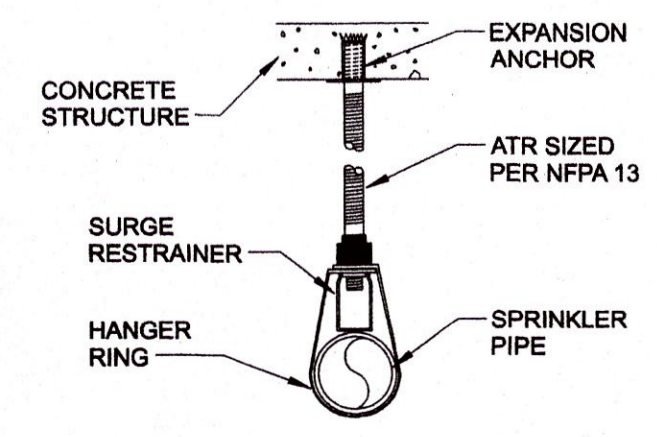


**FIRE PROTECTION PLAN-BELOW MEZZ.**  
 SCALE: 1/8" = 1'-0"

SYMBOL	DESCRIPTION	SIN
●	RELIABLE "F1FR56" CHROME RECESSED PENDENT, OR 1/2" ORIFICE, 155 DEGREE, K=5.6	RA1414
○	RELIABLE "F1FR56" QUICK RESPONSE BRONZE UPRIGHT SPRAY SPRINKLER 1/2" ORIFICE, 200" · K = 5.6.	RA1425

OR EQUAL

**FIRE PROTECTION PLAN**  
 SCALE: 1/8" = 1'-0"



**NOTE:**  
 INSTALLING CONTRACTOR SHALL BE RESPONSIBLE FOR SUBMITTING PLANS AND CALCULATIONS BEARING HIS TITLE BLOCK TO THE LOCAL APPROVING AUTHORITIES. ANY ADDITIONAL NOTES OR DETAILS REQUIRED BY THE AUTHORITY HAVING JURISDICTION TO OBTAIN APPROVAL WILL BE THE INSTALLING CONTRACTORS RESPONSIBILITY.

**COORDINATION NOTE:**  
 THIS DRAWING IS FOR ESTIMATING PURPOSES. IT IS THE INSTALLING CONTRACTOR'S RESPONSIBILITY TO COORDINATE ALL CONDITIONS WITH ALL TRADES BEFORE ANY PIPING IS TO BE FABRICATED. VERIFICATION OF HYDRAULIC CALCULATIONS WILL ALSO BE REQUIRED BY THE AUTHORITY HAVING JURISDICTION TO OBTAIN APPROVAL FOR CHANGES REQUIRED DUE TO THE CONTRACTOR'S FAILURE TO COORDINATE PROPERLY WITH ALL CONDITIONS ON THE JOB SITE.

SPRINKLER CONTRACTOR TO VERIFY FIRE PROTECTION UNDERGROUND LOCATION AND SIZE PRIOR TO DESIGN AND CALCULATION. A CURRENT FLOW TEST SHOULD BE OBTAINED AS WELL.

FIREWALL TO BE INSTALLED HERE TO ALLOW THE SAFEROOM TO BE A SEPERATE BUILDING.

SAFEROOM BUILDING TO BE A TYPE II B STRUCTURE WITH A "B" OCCUPANCY. NO AUTOMATIC SPRINKLERS REQUIRED.