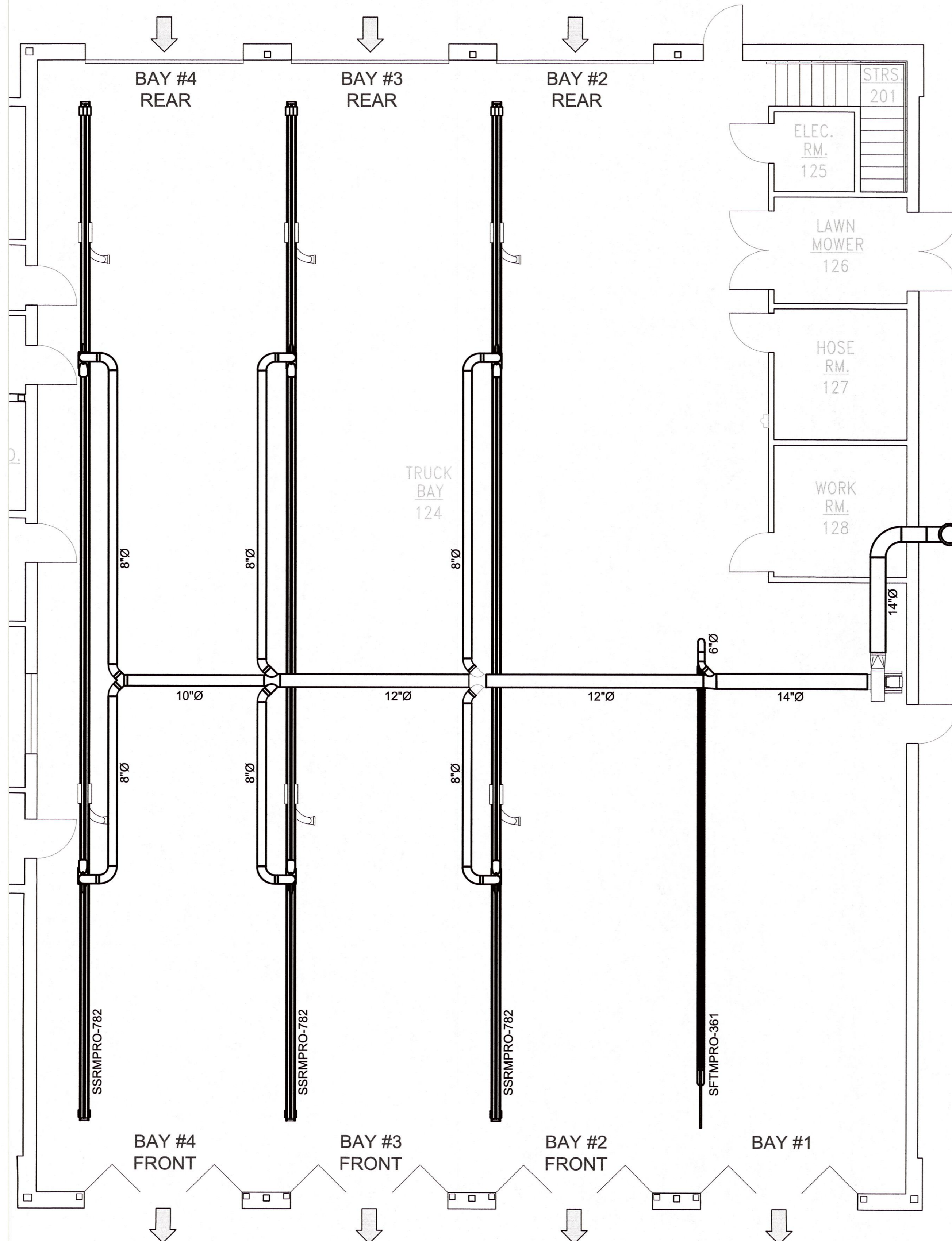


**GENERAL CONSTRUCTION NOTES:**

- FOR THE PURPOSE OF CLEARNESS AND LEGIBILITY DRAWINGS ARE DIAGRAMMATIC AND DESIGN INTENT ONLY. CONTRACTOR SHALL VERIFY ALL DIMENSIONS BY FIELD MEASUREMENT BEFORE BEGINNING ANY FABRICATION OR CONSTRUCTION.
- ALL WORK SHALL BE IN ACCORDANCE WITH ALL APPLICABLE FEDERAL, STATE AND LOCAL CODES IN ACCORDANCE WITH 2019 ICC (IBC, IMC).
- ALL NEW MATERIAL METHODS, AND EQUIPMENT SHALL BE INSTALLED IN STRICT ACCORDANCE WITH THE BUILDING STANDARDS AS APPROVED.
- CONTRACTOR SHALL INSTALL ALL EQUIPMENT IN STRICT ACCORDANCE WITH MANUFACTURERS' RECOMMENDATIONS.
- CONTRACTOR SHALL COORDINATE EXACT LOCATION OF EXHAUST FANS, DUCTWORK, AND EXHAUST DROPS WITH EXISTING IN-PLACE CITY FIRE DEPARTMENTS EQUIPMENT, LIGHTING, AND ALL EXISTING CONDITIONS.
- ALL EXHAUST DUCTWORK SHALL BE SPIRAL SEAM GALVANIZED STEEL FABRICATED AND INSTALLED IN ACCORDANCE WITH CHAPTER 6 OBBC MC AND SMACNA STANDARD MANUAL.
- SHEETMETAL DUCT DIMENSIONS SHOWN ARE AIRWAY DIMENSIONS.
- BALANCE EXHAUST SYSTEM AND EACH EXHAUST DROP MEET AIR QUANTITIES AS REQUIRED.
- CONTRACTOR SHALL COORDINATE WITH CITY FIRE DEPARTMENT PRIOR TO ANY PENETRATION OR ROOF CUTTING.



FAN SCHEDULE								
FAN TYPE	ID#	AIRFLOW (CFM)	RPM	STATIC PRESSURE (IN - WC)	VOLTS / PHASE	HP	BREAKER	WIRE
MAGNEGRIIP	CF363-7.5	4400	3450	6 SP	3ph	7.5	50 AMP	#6THHN

VEHICLE EXHAUST SYSTEM			
DESCRIPTION	PART #	QTY	REMARKS
CONTROL PANEL	500181-08	1	
RAIN CAP	500157-14	1	
FLEXHOSE TRACK	SFTMPRO-361	1	1 HOSE DROP EACH
SUCTION RAIL	SSRM-542	3	2 HOSE DROPS EACH
TOTAL # OF HOSE DROPS:		7	CFM PER HOSE DROP: 600 CFM

**REMARKS:**

A. ITEM HAS BEEN SPECIFIED FOR QUALITY AND PERFORMANCE ANY APPROVED SUBSTITUTION IS AT THE RISK OF THE OWNER.

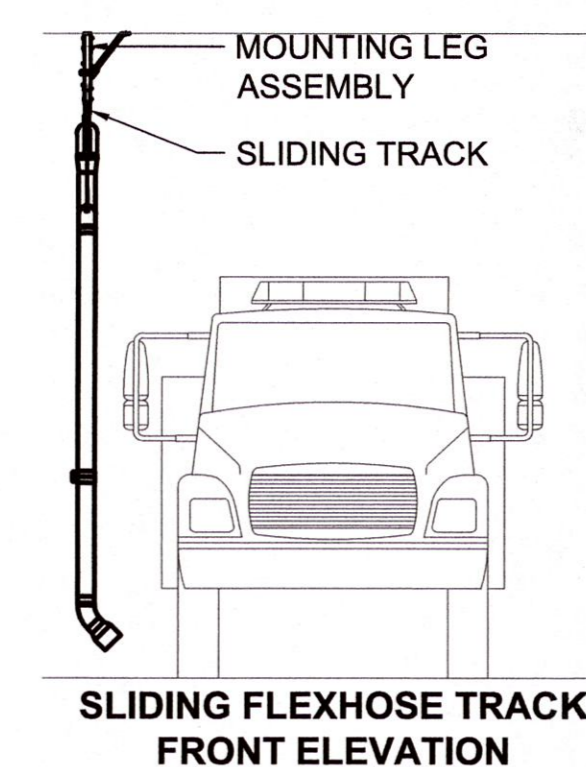
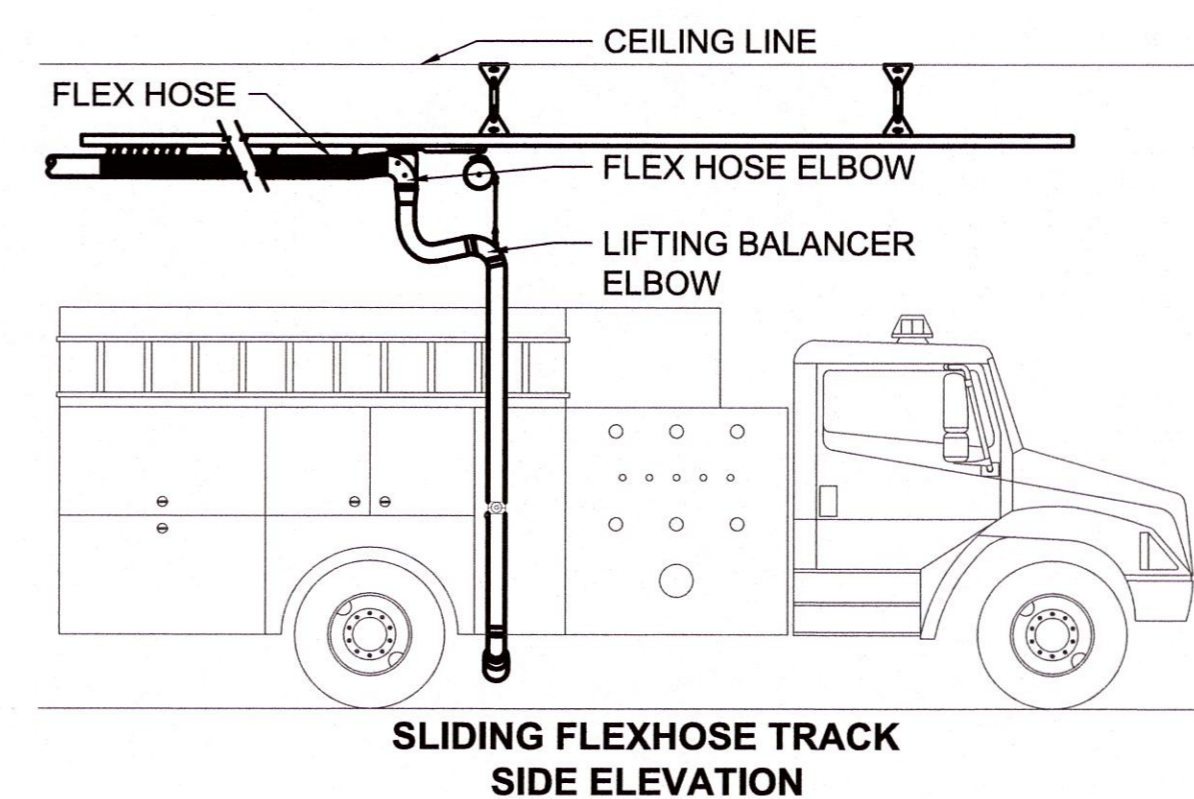
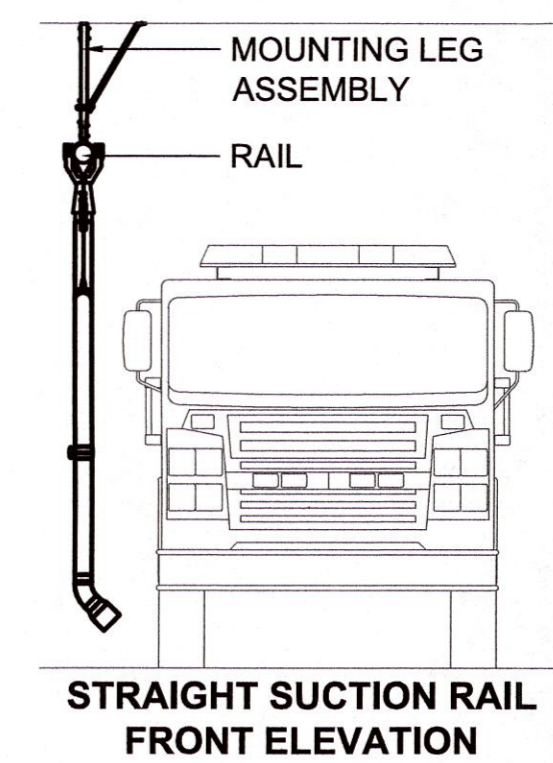
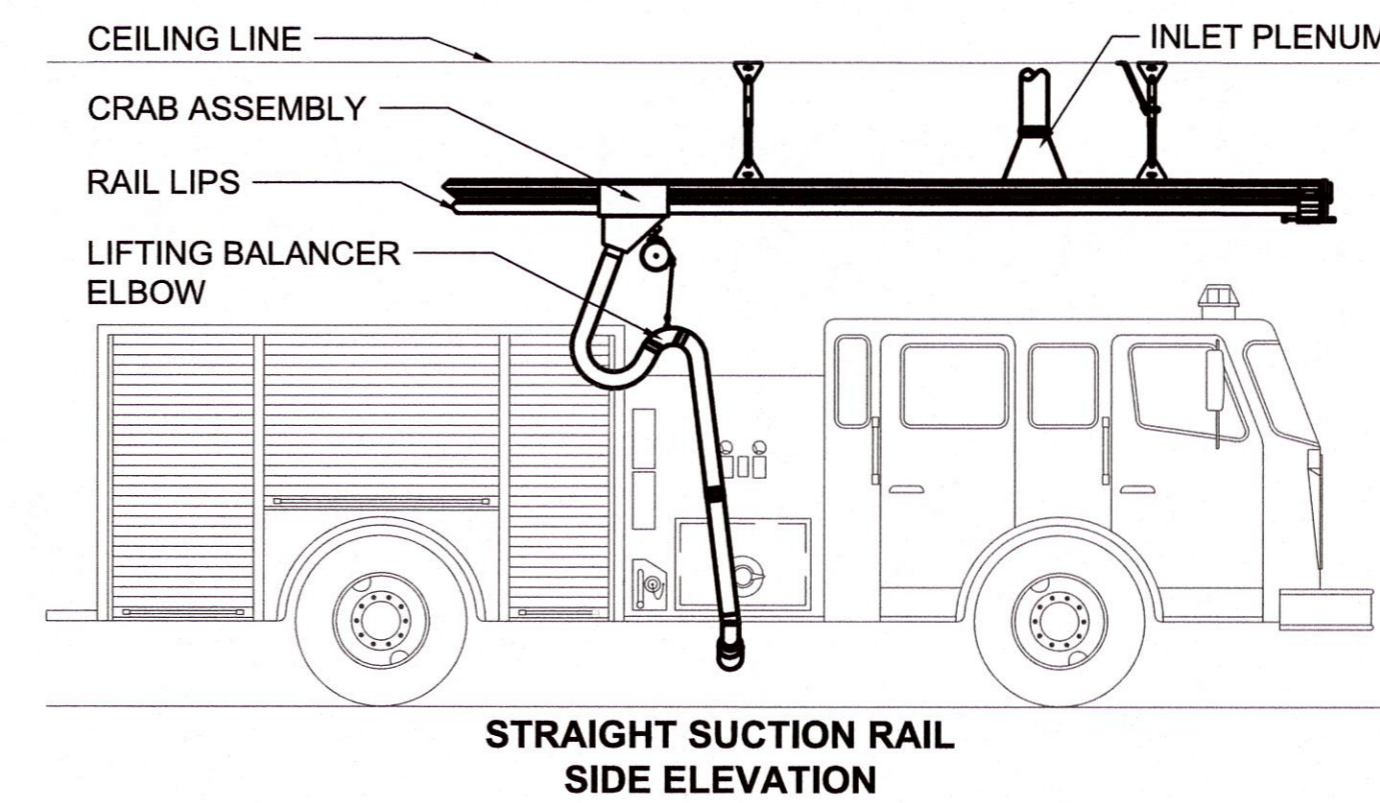
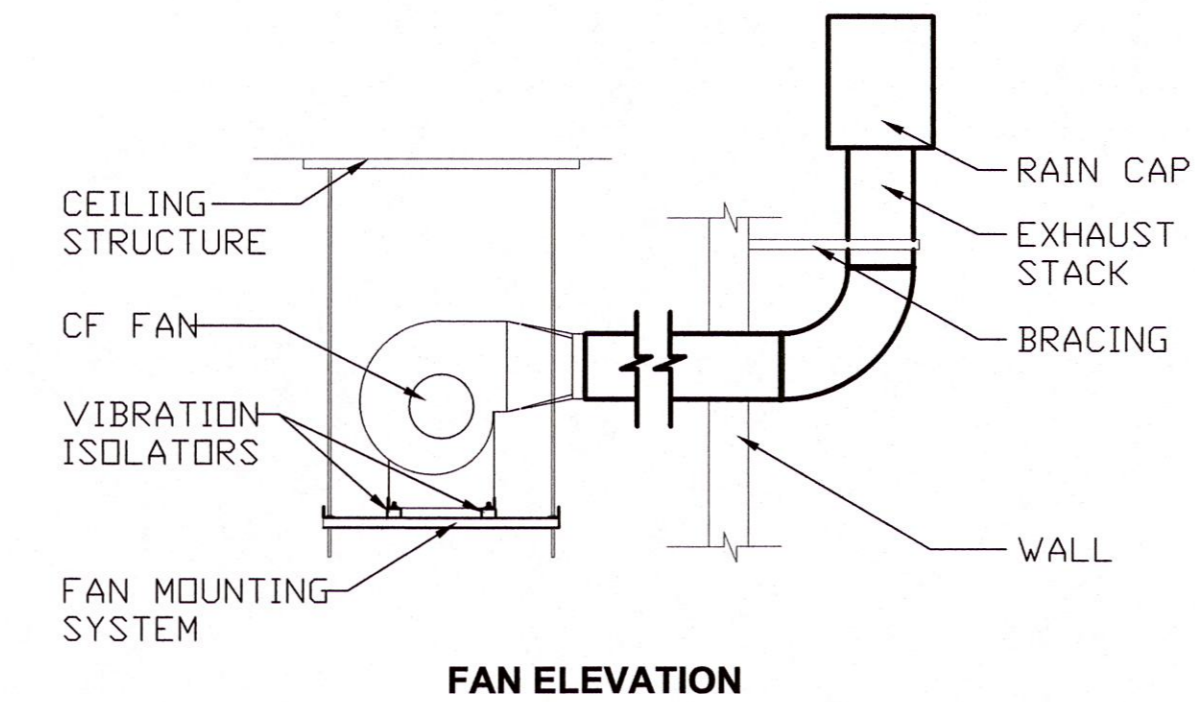
B. PROVIDE TRACK OR RAIL SYSTEM, TRANSITION ELBOW, HIGH TEMPERATURE HOSE, HOSE CLAMPS, NOZZLES, TAILPIPE CONNECTORS, FRESH AIR INTAKE, AND OTHER ITEMS REQUIRED FOR A COMPLETE INSTALLATION.

C. PROVIDE WIRELESS CONTROL PANEL ACTIVATION, PRESSURE SENSORS, WIRELESS TRANSMITTERS, AND ADDITIONAL COMPONENTS IF REQUIRED FOR AUTOMATIC FAN CONTROL.

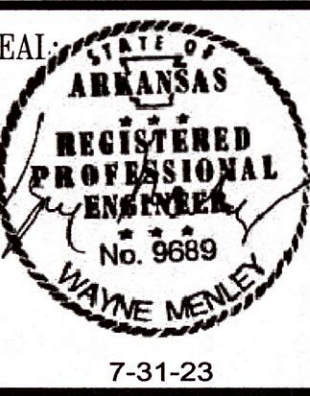
D. VEHICLE EXHAUST SYSTEM DESIGN AND DRAWING IS THE SOLE PROPERTY OF THE DESIGNERS, MAGNEGRIIP.

E. DETAILS MAY NOT REPRESENT THE SAME KIND OF VEHICLE IN PLAN VIEW.

F. DETAILS ARE MEANT TO ILLUSTRATE "TYPICAL" ELEVATION VIEWS.



**TRUCK BAY EXHAUST SYTEM**



THESE DRAWINGS AND THE DESIGN SHOWN HEREON ARE THE PROPERTY OF HORD ARCHITECTS. THE REPRODUCTION, COPYING OR USE OF THIS INFORMATION WITHOUT HORD ARCHITECTS' WRITTEN CONSENT IS PROHIBITED, AND ANY INFRINGEMENT WILL BE SUBJECT TO LEGAL ACTION. HORD ARCHITECTS

PROPOSED:  
**TRUMANN FIRE STATION**  
 801 WEST MAIN ST, TRUMANN, AR 72472

PROJECT NO.: 2023-02  
 DRAWN BY: DD  
 CHECKED BY: WM  
 DATE: 07-31-2023  
 REVISIONS:

SHEET NO.:  
**M103**

I:\192.168.1.254\Miller-Newell\David\2023-02-03 TRUMANN FIRE STATION\2023-04-04 - DD Drawings\A\FP01.dwg, 8/4/2023 9:56:29 AM, DWG To PDF.pc3