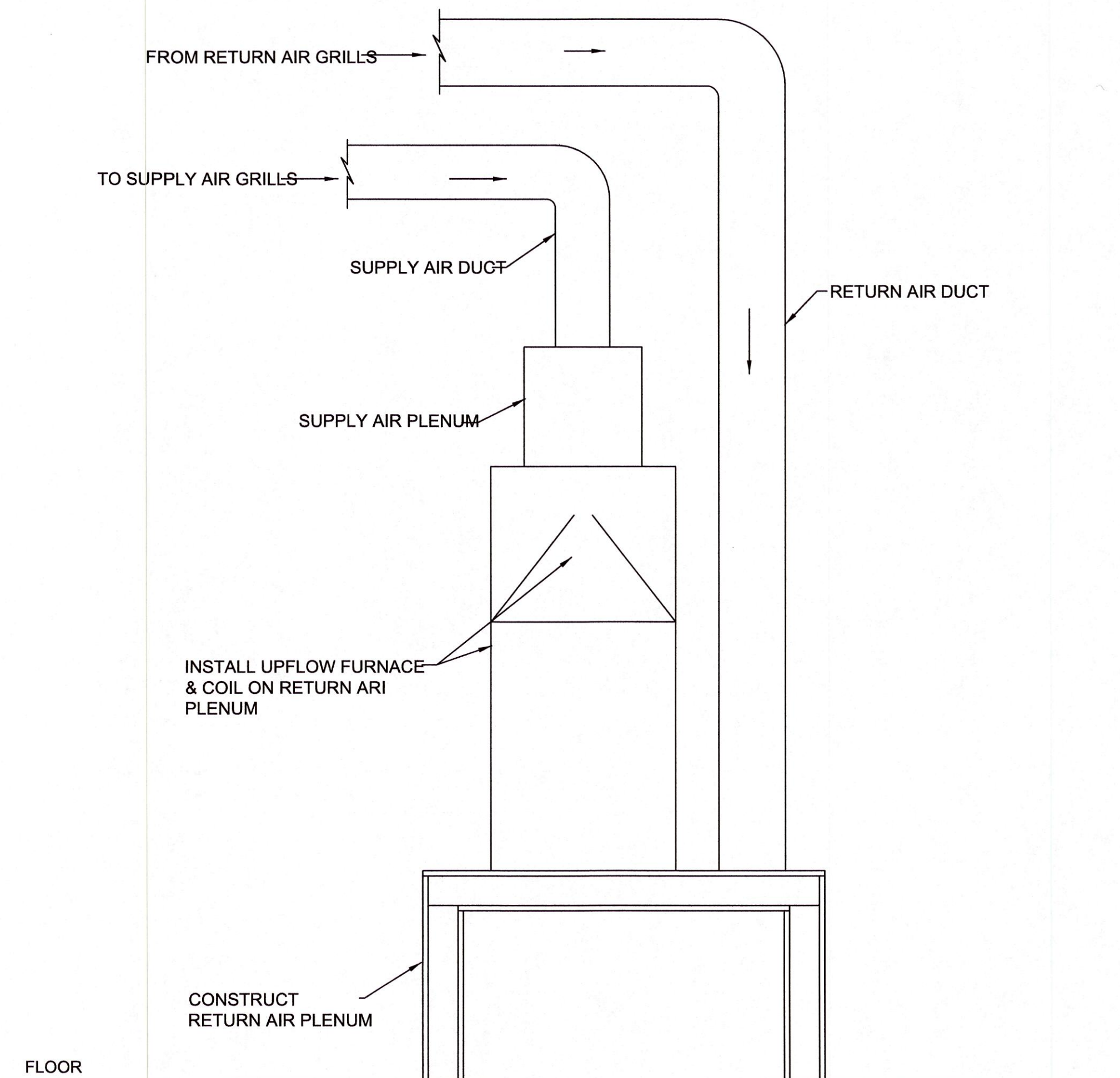
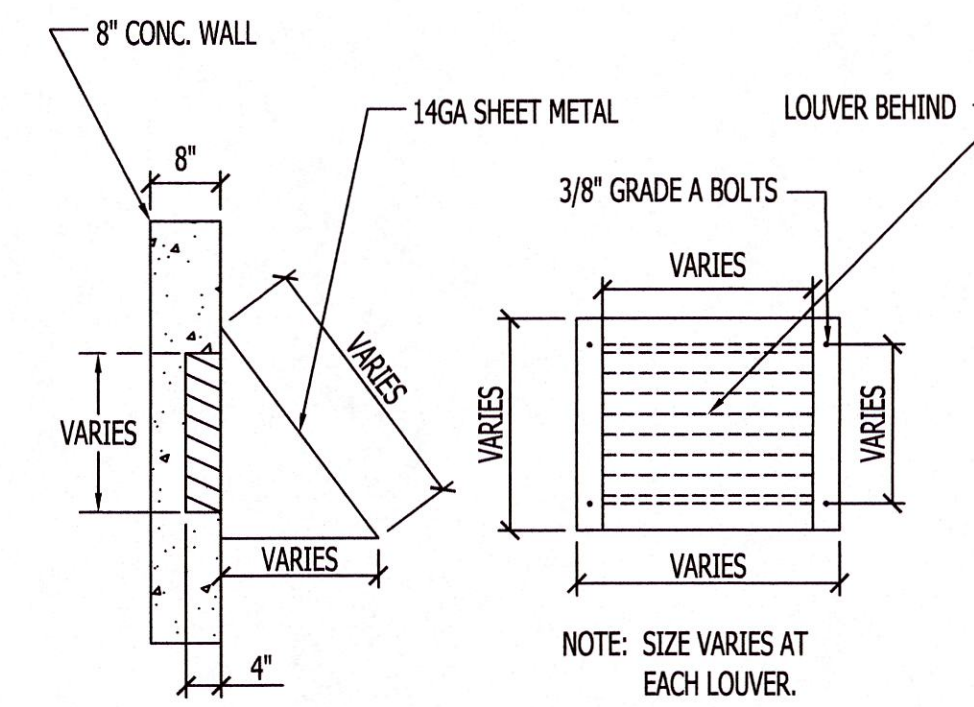


## MECHANICAL NOTES

- ALL INSTALLATIONS SHALL COMPLY WITH THE ARKANSAS MECHANICAL CODE.
- DUCTWORK SHALL BE GALVANIZED FABRICATED AND INSTALLED IN ACCORDANCE WITH THE LATEST PUBLICATION OF SMACNA STANDARDS, FOR LOW PRESSURE DUCT WORK.
- DUCT SIZES SHOWN ON THE DRAWINGS ARE ACTUAL SIZES REQUIRED AND DO NOT INCLUDE ALLOWANCE FOR INTERNAL INSTALLATION. RECTANGULAR DUCT FOR UNITS MUST BE INCREASED IN SIZE FROM THAT SHOWN ON THE DRAWINGS TO ALLOW FOR INSULATION.
- AIR FOIL TURNING VANES SHALL BE INSTALLED IN ALL ABRUPT ELBOWS. CONNECTION TO DIFFUSERS, GRILLS AND REGISTER FACES SHALL BE MADE ABSOLUTELY AIR TIGHT.
- FURNISH FLEXIBLE CONNECTIONS BETWEEN ALL DUCT WORK AND FANS OR FAN COIL UNITS. CONNECTIONS SHALL BE FLAME PROOF AND WATER PROOF.
- DIFFUSERS, GRILLS AND REGISTERS ARE SCHEDULED ON THE DRAWINGS. CENTER ALL DIFFUSERS TO COORDINATE WITH REFLECTED CEILINGS, LIGHTING, SPEAKERS, ETC.
- FURNISH VOLUME CONTROL DAMPERS TO PROVIDE CONTROL OF THE AIR FLOW FOR ALL SUPPLY AND RETURN DIFFUSERS AND REGISTERS. OPERATION SHALL BE FROM FACE OF THE GRILL.
- CONTRACTOR TO BALANCE THE AIRFLOW AS INDICATED ON THE DRAWINGS IN ACCORDANCE WITH ASHRAE STANDARDS.
- RECTANGULAR DUCT WORK, BOTH SUPPLY AND RETURN, SHALL BE INSULATED WITH 1" THICK 2 POUND DENSITY DUCT LINER WITH VINYL SPRAYED SURFACE TO THE AIR SIDE. THE LINER SHALL BE INSTALLED IN ACCORDANCE WITH DUCT LINER STANDARDS OF SMACNA. RETURN DUCT INSULATED ONLY IF INDICATED ON THE PLANS.
- ROUND DUCTWORK SHALL BE INSULATED WITH 2" THICK FIBERGLASS INSULATION WITH FIRE RESISTIVE VAPOR BARRIER JACKET.
- INSTALL FIRE DAMPERS AT ALL RATED WALL PENETRATIONS, WHERE SHOWN ON THE PLANS, AND AS REQUIRED BY CODE.
- F-1 SHALL BE INTERLOCKED WITH H-1 TO RUN WHEN H-1 IS OPERATING.
- F-2 SHALL BE INTERLOCKED WITH H-2 TO RUN WHEN H-2 IS OPERATING.
- F-9 SHALL BE INTERLOCKED WITH BC-1 TO RUN WHEN BC-1 IS OPERATING.
- TRUCK BAY EXHAUST REMOVAL SYSTEM DUCT SHALL BE HIGH PRESSURE SPIRAL DUCT FABRICATED IN ACCORDANCE WITH AMACNA STANDARDS.
- CONTRACTOR SHALL PROVIDE ALL REQUIRED HOSE DROPS, AND REQUIRED ACCESSORIES FOR A PROPER OPERATING EXHAUST REMOVAL SYSTEM IN THE TRUCK BAY AREA. CONTRACTOR SHALL VERIFY LOCATION OF EXHAUST DROPS WITH OWNER PRIOR TO INSTALLATION TO COORDINATE WITH TRUCK EXHAUST LOCATIONS.
- ALL EXTERIOR PENETRATIONS ON THE SAFE ROOM BUILDING SHALL BE PROTECTED BY A SHROUD. SEE PROTECTIVE SHROUD DETAIL THIS SHEET.



INSTALLATION SCHEMATIC FOR UPFLOW GAS FURNACE AND BLOWER / COIL UNIT



PROTECTIVE SHROUD DETAIL  
N.T.S.

MECHANICAL SCHEDULE					
MARK	DESCRIPTION	MANUFACTURER	MODEL	SIZE	REMARKS
G-1	SUPPLY GRILL	HART & COOLEY	FPD3	6"	80 CFM, WITH BUTTERFLY DAMPER, 24" X 24" GRILL
G-2	SUPPLY GRILL	HART & COOLEY	FPD3	6"	50 CFM, WITH BUTTERFLY DAMPER, 24" X 24" GRILL
G-3	SUPPLY GRILL	HART & COOLEY	FPD3	6"	100 CFM WITH BUTTERFLY DAMPER, 24" X 24" GRILL
G-4	SUPPLY GRILL	HART & COOLEY	FPD3	6"	95 CFM WITH BUTTERFLY DAMPER, 24" X 24" GRILL
G-5	SUPPLY GRILL	HART & COOLEY	FPD3	8"	200 CFM WITH BUTTERFLY DAMPER, 24" X 24" GRILL
G-6	SUPPLY GRILL	HART & COOLEY	FPD3	8"	150 CFM WITH BUTTERFLY DAMPER, 24" X 24" GRILL
G-7	SUPPLY GRILL	HART & COOLEY	FPD3	6"	65 CFM, WITH BUTTERFLY DAMPER, 24" X 24" GRILL
G-8	SUPPLY GRILL	HART & COOLEY	FPD3	6"	115 CFM, WITH BUTTERFLY DAMPER, 24" X 24" GRILL
G-9	SUPPLY GRILL	HART & COOLEY	FPD3	6"	70 CFM, WITH BUTTERFLY DAMPER, 24" X 24" GRILL
G-10	SUPPLY GRILL	HART & COOLEY	FPD3	8"	200 CFM, WITH BUTTERFLY DAMPER, 24" X 24" GRILL
G-11	SUPPLY GRILL	HART & COOLEY	FPD3	6"	120 CFM, WITH BUTTERFLY DAMPER, 24" X 24" GRILL
G-12	SUPPLY GRILL	HART & COOLEY	FPD3	6"	135 CFM, WITH BUTTERFLY DAMPER, 24" X 24" GRILL
G-13	SUPPLY GRILL	HART & COOLEY	FPD3	6"	100 CFM, WITH BUTTERFLY DAMPER, 24" X 24" GRILL
G-14	SUPPLY GRILL	HART & COOLEY	FPD3	8"	250 CFM, WITH BUTTERFLY DAMPER, 24" X 24" GRILL
G-15	SUPPLY GRILL	HART & COOLEY	FPD3	8"	312 CFM, WITH BUTTERFLY DAMPER, 24" X 24" GRILL
G-16	SUPPLY GRILL	HART & COOLEY	FPD3	6"	100 CFM, WITH BUTTERFLY DAMPER, 24" X 24" GRILL
G-17	SUPPLY GRILL	HART & COOLEY	FPD3	6"	56 CFM, WITH BUTTERFLY DAMPER, 24" X 24" GRILL
RA-1	RETURN GRILL	HART & COOLEY	RH45T	24"x24"	120 CFM
RA-2	RETURN GRILL	HART & COOLEY	RH45T	24"x24"	50 CFM
RA-3	RETURN GRILL	HART & COOLEY	RH45T	24"x24"	400 CFM
RA-4	RETURN GRILL	HART & COOLEY	RH45T	24"x24"	380 CFM
RA-5	RETURN GRILL	HART & COOLEY	RH45T	24"x24"	800 CFM
RA-6	RETURN GRILL	HART & COOLEY	RH45T	24"x24"	600 CFM
RA-7	RETURN GRILL	HART & COOLEY	RH45T	24"x24"	230 CFM
RA-8	RETURN GRILL	HART & COOLEY	RH45T	24"x24"	160 CFM
RA-9	RETURN GRILL	HART & COOLEY	RH45T	24"x24"	140 CFM
RA-10	RETURN GRILL	HART & COOLEY	RH45T	24"x24"	50 CFM
RA-11	RETURN GRILL	HART & COOLEY	RH45T	24"x24"	700 CFM
RA-12	RETURN GRILL	HART & COOLEY	RH45T	24"x24"	120 CFM
RA-13	RETURN GRILL	HART & COOLEY	RH45T	24"x24"	270 CFM
RA-14	RETURN GRILL	HART & COOLEY	RH45T	24"x24"	200 CFM
RA-15	RETURN GRILL	HART & COOLEY	RH-90	36"x30"	3,000 CFM
RA-16	RETURN GRILL	HART & COOLEY	RH45T	24"x24"	200 CFM
H-1	UPFLOW GAS FURNACE	LENNOX	SLP99UH070XV368	66,000 BTUH INPUT / 64,000 BTUH OUTPUT	98.1% AFUE, 0.9" SP, SET AIR FLOW TO 500 CFM, PROVIDE 500 CFM FRESH AIR AND FRESH AIR INTAKE
H-2	UPFLOW GAS FURNACE	LENNOX	SLP99UH135XV60D	132,000 BTUH INPUT / 128,000 BTUH OUTPUT	98.4% AFUE, 0.9" SP, PROVIDE 200 CFM FRESH AIR AND FRESH AIR INTAKE
H-3	UPFLOW GAS FURNACE	LENNOX	SLP99UH070XV368	66,000 BTUH INPUT / 64,000 BTUH OUTPUT	98.1% AFUE, 0.9" SP, SET AIR FLOW TO 500 CFM, PROVIDE 500 CFM FRESH AIR AND FRESH AIR INTAKE
H-4	UPFLOW GAS FURNACE	LENNOX	SLP99UH070XV368	66,000 BTUH INPUT / 64,000 BTUH OUTPUT	98.1% AFUE, 0.9" SP, PROVIDE 100 CFM FRESH AIR AND FRESH AIR INTAKE
H-5	UPFLOW GAS FURNACE	LENNOX	SLP99UH135XV60D	132,000 BTUH INPUT / 128,000 BTUH OUTPUT	98.4% AFUE, 0.9" SP, PROVIDE 200 CFM FRESH AIR AND FRESH AIR INTAKE
H-6	TUBE HEATER	SPACE-RAY	LT550-25	50,000 BTUH	25" TUBE
H-7	SUSPENDED HEATER	MODINE	HER 30	3 KW	208 VOLT, 1-PHASE, PROVIDE REMOTE MOUNT THERMOSTAT
EC-1	EVAPORATOR COIL	LENNOX	C35-368+TDR+TXV	3 TON	
EC-2	EVAPORATOR COIL	LENNOX	C35-60D+TDR+TXV	5 TON	
EC-3	EVAPORATOR COIL	LENNOX	C35-368+TDR+TXV	3 TON	
EC-4	EVAPORATOR COIL	LENNOX	C35-24B+TDR+TXV	2 TON	
EC-5	EVAPORATOR COIL	LENNOX	C35-60D+TDR+TXV	5 TON	
C-1	CONDENSING UNIT	LENNOX	EL23XCV-036-208A	3 TON	208 VOLT, 1-PHASE
C-2	CONDENSING UNIT	LENNOX	EL23XCV-060-208A	5 TON	208 VOLT, 1-PHASE
C-3	CONDENSING UNIT	LENNOX	EL23XCV-036-208A	3 TON	208 VOLT, 1-PHASE
C-4	CONDENSING UNIT	LENNOX	EL23XCV-024-208A	2 TON	208 VOLT, 1-PHASE
C-5	CONDENSING UNIT	LENNOX	EL23XCV-060-208A	5 TON	208 VOLT, 1-PHASE
BC-1	BLOWER/COIL UNIT	LENNOX	CBA38MV-060-208+TDR	5 TON	208 VOLT, 1-PHASE, PROVIDE 1,050 CFM FRESH AIR, PROVIDE EC388-9CB, 9kw HEAT STRIP
HP-1	HEAT PUMP	LENNOX	EL22XPV-060-208A	5 TON	208 VOLT, 1-PHASE
F-1	VENTILATION FAN	GREENHECK	SP-A700-VG	600 CFM	0.25" SP, PROVIDE DUCT, PROVIDE ROOF CAP
F-2	VENTILATION FAN	GREENHECK	SP-A1050-VG	200 CFM	0.25" SP, PROVIDE DUCT, PROVIDE ROOF CAP
F-3	VENTILATION FAN	GREENHECK	CLIE-300-C-VGD	9,200 CFM	0.8" SP, PROVIDE ROOF CURB, PROVIDE BACKDRAFT DAMPER, 208 VOLT, 3-PHASE
F-4	VENTILATION FAN	GREENHECK	SP-A510-VG	450 CFM	0.25" SP, PROVIDE DUCT, PROVIDE ROOF CAP
F-5	VENTILATION FAN	GREENHECK	SP-A390-VG	125 CFM	0.25" SP, PROVIDE DUCT, PROVIDE ROOF CAP
F-6	VENTILATION FAN	GREENHECK	SP-A110	100 CFM	0.25" SP, PROVIDE DUCT, PROVIDE ROOF CAP
F-7	VENTILATION FAN	GREENHECK	SP-AP0511W	75 CFM	0.25" SP, PROVIDE DUCT, PROVIDE ROOF CAP
F-8	VENTILATION FAN	GREENHECK	SP-A390-VG	125 CFM	0.25" SP, PROVIDE DUCT, PROVIDE WALL CAP, PROVIDE PROTECTIVE SHROUD
F-9	VENTILATION FAN	GREENHECK	SP-A900	800 CFM	0.3" SP, PROVIDE DUCT, PROVIDE WALL CAP, PROVIDE PROTECTIVE SHROUD
L-1	LOUVER	GREENHECK	ESJ-401	48"x42"	PROVIDE MOTORIZED DAMPER, PROVIDE SCREEN, INTERLOCK WITH F-3
L-2	LOUVER	GREENHECK	ESJ-401	36"x18"	1.050 CFM, PROVIDE MANUAL ADJUSTABLE DAMPER, PROVIDE PROTECTIVE SHROUD
VH	VENT HOOD	BROAN	F40000	36"	STAINLESS STEEL, PROVIDE AND INSTALL GUARDIAN G500-B FIRE SUPPRESSION SYSTEM
T	THERMOSTAT	LENNOX	S40		
F-10	EXHAUST SYSTEM FAN	MAGNA GRIP	CF363-7.5	7.5 HP	4400 CFM, 6" SP, 208 VOLT, 3Ø

## MECHANICAL SCHEDULE



7-31-23

Miller Newell Engineers Inc.  
10 THORO STREET  
NEWPORT, AR 72412  
PHONE: (870) 523-6531 FAX: (870) 523-6533  
MILLER@NEWELLENGR.COM

THESE DRAWINGS AND THE DESIGN SHOWN HEREON ARE THE PROPERTY OF HORD ARCHITECTS. THE REPRODUCTION, COPYING OR USE OF THIS INFORMATION WITHOUT HORD ARCHITECTS' WRITTEN CONSENT IS PROHIBITED, AND ANY INFRINGEMENT WILL BE SUBJECT TO LEGAL ACTION.  
HORD ARCHITECTS

PROPOSED:  
TRUMANN FIRE STATION  
801 WEST MAIN ST, TRUMANN, AR 72472

PROJECT NO.: 2023-02  
DRAWN BY: DD  
CHECKED BY: WM  
DATE: 07-31-2023  
REVISIONS:

SHEET NO.:

M102